

of the Hawaiian Islands. J. Laurens Barnard. Smithsonian Institution Press, Washington, D.C., 1970 (available from the Superintendent of Documents, Washington, D.C.). vi + 286 pp., illus. Paper, \$3. Smithsonian Contributions to Zoology, No. 34.

Tensor Properties of Materials. Generalized Compliance and Conductivity. A. R. Billings. Wiley-Interscience, New York, 1969. xvi + 172 pp., illus. \$9.75.

Theoretische Grundlagen der allgemeinen Kristalldiagnose im durchfallenden Licht. Robert Rath. Springer-Verlag, New York, 1969. viii + 134 pp., illus. \$13.20.

Theory of Colours. Johann Wolfgang von Goethe. Translated from the German by Charles Lock Eastlake. M.I.T. Press, Cambridge, Mass., 1970. lxii + 424 pp. + plates. Cloth, \$10; paper, \$2.95. Reprint, with a new introduction by Deane B. Judd, of the 1840 edition.

Thermodynamics and Statistical Mechanics. Lawrence M. Grossman. McGraw-Hill, New York, 1969. xvi + 336 pp., illus. \$13.50.

Thermodynamics and Statistical Physics. A Short Introduction. Robert J. Finkelstein. Freeman, San Francisco, 1969. xiv + 250 pp., illus. \$12. Physics Series.

Trade in Innovation. The Ins and Outs of Licensing. J. A. D. Cropp, D. C. Harris, and E. S. Stern. Wiley-Interscience, New York, 1970. x + 134 pp. \$6.95. John Wiley Manager's Guide Series.

Treatise on Analysis. J. Dieudonné. Vol. 2. Translated from the French edition (Paris, 1969) by I. G. MacDonald. Academic Press, New York, 1970. xiv + 426 pp. \$16. Pure and Applied Mathematics, vol. 10-II.

The Unheavenly City. The Nature and Future of Our Urban Crisis. Edward C. Banfield. Little, Brown, Boston, 1970. x + 308 pp. \$6.95.

Up in a Balloon. Leonard Cottrell. Phillips, New York, 1970. 192 pp., illus. \$6.95.

Water Quality Behavior in Reservoirs. A Compilation of Published Research Papers. Compiled by James M. Symons. Environmental Control Administration, U.S. Department of Health, Education, and Welfare, Cincinnati, 1969 (available from the Superintendent of Documents, Washington, D.C.). xii + 616 pp., illus. Paper, \$3.25. Public Health Service Publ. No. 1930.

We Wished To Be Looked Upon. A Study of the Aspirations of Youth in a Developing Society. Vera Rubin and Marisa Zavalloni. Teachers College Press, Columbia University, New York, 1969. xii + 260 pp. Cloth, \$8.95; paper, \$5.95. Institute of International Studies, Center for Education in Latin America.

The Wish To Be Free. Society, Psyche, and Value Change. Fred Weinstein and Gerald M. Platt. University of California Press, Berkeley, 1969. xiv + 322 pp. \$8.50.

The Wonderful Partnership of Animals and Man. K. L. Boynton. Illustrated by Wendell K. Hall. Tallis-Au Press, Manchester, Iowa, 1970. 48 pp. Paper, \$1.

Working with a Slide Rule. A Programmed Text. W. Geerts. Translated from the third Dutch edition by C. Van Walraven. Brandon/Systems Press, Princeton, N.J., 1970. x + 42 pp., illus. Paper, \$4.95; with 18-cm slide rule, \$6.95.

Something's missing

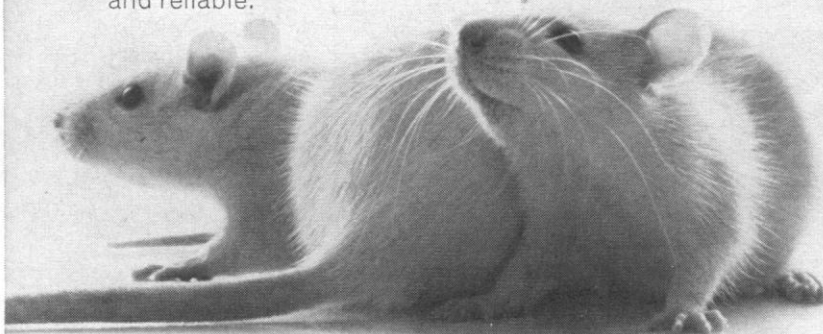
What these rats don't have may be exactly what you want.

They have no thyroid or pituitary glands. And thyroidectomies and hypophysectomies are only two of the six "endocrinectomies" we perform some 50,000 times a year on our COBS® rats and mice and Lakeview hamsters. You can opt for one, some, or all of these surgical procedures. Even a neonatal thymectomy.

The Charles River surgical team is made up entirely of graduate biologists. All experts in trauma-minimizing techniques and completeness of procedure. Which makes for optimum animal responsiveness.

And to complement the surgery on our COBS animals, we're developing techniques to perform many procedures in germfree isolators.

So when you need surgically-altered animals, send us your specifications. Our take-out service is fast and reliable.



Omission Possible

Charles River

BREEDING LABORATORIES, INC.
WILMINGTON, MASSACHUSETTS 01887



FROM THE
HAND OF THE
VETERINARIAN
TO RESEARCH



CARVER LABORATORY PRESS

World's most widely used press for R & D, testing compounds, laminating, shear and break tests, pilot runs, etc. New features include air operated quick-closer, constant pressure devices, complete motorization package. Capacities to 25 tons.

NEW BULLETIN AVAILABLE
Contains complete details and prices. Send for free copy today.

FRED S. CARVER INC.
52 River Road
Summit, New Jersey 07901
a subsidiary of
Sterling, Inc.
Milwaukee, Wisconsin

Circle No. 102 on Readers' Service Card

-76°C Ultra-Cold. -96°C Ultra-Colder.

Both from Kelvinator Commercial. Upright drops to -76°C. Ultra-cold. Chest model dips to -96°C. Ultra-colder. Upright's six French doors open individually. And you can label each door to know what's inside. Easy labeling for what's under the chest's stainless steel sliding lids, too. Want more? Automatic alarm systems? 2" portholes for recorders? The Kelvinator Commercial name? You got them. Don't be caught in the cold without ultra-cold. Contact J. E. Hirssig at Kelvinator Commercial, the company that knows how to give you 12 cubic feet of the best cold you ever had.

Upright UC-105 (-76°C/-105°F) Chest UC-520 (-85°C/-120°F)
Chest UC-540 (-96°C/-140°F)



Kelvinator

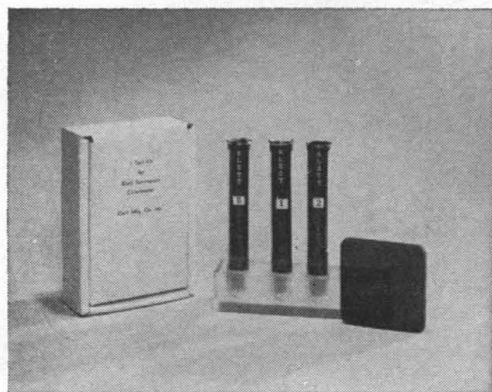
621 Quay Street • Manitowoc, Wisc. 54220 • (414) 682-0156

One of the White Consolidated Industries



Circle No. 104 on Readers' Service Card

KLETT-SUMMERSON TEST KIT



NEW FROM KLETT

A Test Kit to check your Klett Summerson Colorimeter. Set consists of 3 Glass Standards and a Filter. There are no solutions to mix and the results are immediate.

KLETT SCIENTIFIC PRODUCTS

PHOTOELECTRIC COLORIMETERS • BIO-COLORIMETERS
GLASS ABSORPTION CELLS • COLORIMETER NEPHELOMETERS • KLETT REAGENTS • COLONY MARKER AND TALLY

Klett Manufacturing Co., Inc.
179 EAST 87TH STREET, NEW YORK, N. Y.

Circle No. 103 on Readers' Service Card

Index of Advertisers

7 August 1970

Academic Press	617
Airco Industrial Gases	524
American Optical Corp.	624
Bel-Art Products	618
Bio-Rad Laboratories	531
Blue M Electric Co.	618
Brinkmann Instruments, Sartorius Div.	521
Carver, Fred S., Inc.	620
Charles River Breeding Laboratories, Inc.	619
Chemical Rubber Co.	532
Corning Glass Works	538
Dole Co., Chemical Div.	530
Fabri-Tek Instruments, Inc.	514
Hyland	613
ISCO	534
Jeolco (U.S.A.) Inc.	515, 517, 519
Kelvinator Commercial	620
Klett Manufacturing Co., Inc.	620
Kontes Glass Co.	623
Labindustries	516
Leitz, E., Inc.	536
LKB Instruments Inc.	510
Maryland Plastics, Inc.	518
Mettler Instrument Corp.	511
Nalgene Labware Div., Nalge Co., Div. of Sybron Corp.	533
Nikon Inc., Instrument Div.	527
Norton Plastics and Synthetics Div.	615
Professional Tape Co., Inc.	613
Ralston Purina Co.	614
Randolph Co.	526A
RESCO, Inc.	613
Sargent-Welch Scientific Co.	522
Shandon Scientific Co., Inc.	616
Sigma Chemical Co.	617
Sorvall, Ivan, Inc.	535
Tenney Engineering, Inc.	614
Ultrascan Co.	520
Unitron Instrument Co.	523
Varian Techtron	526
Wang Laboratories, Inc.	528
Worthington Biochemical Corp.	525

Personnel Placement

POSITIONS WANTED: 40¢ per word, minimum charge \$10. Use of Box Number counts as 10 additional words. Payment in advance is required. These rates apply to individuals only. Personnel agencies and companies take display rate for all advertising.

POSITIONS OPEN: \$21 per quarter inch (minimum \$84) for publishers 6 point type (12 lines per inch). All ads using larger than 6 point type will be billed as display ads at \$25 per quarter inch (minimum \$100). No charge for Box Number. Rates net. No agency commission allowed for ads under 4 inches. No cash discount. Ads over 1 inch will be billed at the nearest half inch. Payment in advance is required except where satisfactory credit has been established.

COPY for ads must reach **SCIENCE** 4 weeks before issue date (Friday of every week). Send copy for **Personnel Placement** advertising to:

SCIENCE, Room 211
1515 Massachusetts Ave., NW
Washington, D.C. 20005

Replies to blind ads should be addressed as follows:

Box (give number)
SCIENCE
1515 Massachusetts Ave., NW
Washington, D.C. 20005

POSITIONS WANTED

Biochemist, Ph.D. 4.5 years' research experience. Skilled in all biochemical research techniques. Publications. Seeks teaching or research position. San Francisco Bay Area only. Available September 1970. S. Liu, 904 Jackson, Albany, Calif. 94706. X

Biochemist, Ph.D. (1967); age 30. Three years of postdoctoral research. Extensive experience in biosynthesis and structural analysis of glycoproteins and mucopolysaccharides. Strong background in radioisotope techniques (including preparation of labeled substrates), enzyme purification, subcellular fractionation, chromatography, electrophoresis, and so forth. Desires academic/research position at university/research institute. Box 306, **SCIENCE**. X

Biochemist, Ph.D., 4 years' experience in tumor-host research, publications. Seeking responsible position in university, institute or industry. Available immediately. Box 307, **SCIENCE**. X

Have a **Bachelor of Arts Degree in Biology; a Chemistry and Zoology Background.** Research experience. Mr. David Blair, 108A Highland Ave., Somerville, Mass. 02143. X

Cytogenetics, Ph.D., candidate, M.S., M.T. (ASCP). Seven years' research, 10 years' teaching and medical laboratory: hematology, biochemistry. Chemotherapeutic drug studies on single cells, lymphoid cell cultures, and animals; karyotyping and microsurgery. Desires teaching-research. New Jersey, New York. Box 308, **SCIENCE**. X

Environmental Physiologist, Ph.D. Experienced teaching, research, and aerospace industry. Environmental toxicology specialty. Good practical knowledge biometrics. 16966 Janine Drive, Whittier, Calif., 90603. 8/14

Microbiologist (Bact.) D.V.M., Ph.D. with research teaching experience. Publications, seeking faculty position. Box 181, **SCIENCE**. X

Radiobiology-Chemistry-Medical Science: M.S.+B.S., B.A. Ph.D. tools: Computer Science, French. Graduate honors 3.6/4.0. Three years' experience VA isotopes research; academic research, tumor cells. Honorably discharged. Desires mainly research, medical/chemical, or fellowship United States/Canada. Available immediately. Box 305, **SCIENCE**. 8/7

POSITIONS OPEN

Position open for **Research-Minded Individual Trained in Biochemistry** or related field to collaborate in immunochemistry and related biochemical research. B average required. Progressive hospital associated with Northwestern University. Excellent salary. Academic appointment or graduate training depending on status of applicant.

Box 309, **SCIENCE**

Ph.D. RESEARCH BIOCHEMIST, preferably to conduct researches on blood coagulation in relation to lipids and lipoproteins. Some past experience in lipid biochemistry, and preferably some knowledge and experience in blood coagulation desirable. Send inquiries to **Dr. W. O. Lundberg, Executive Director, The Hormel Institute, University of Minnesota, 801 16th Avenue N.E., Austin, Minnesota 55912.**

BLOOD BANK DIRECTORS AND TECHNOLOGISTS

Several positions for full-time medical directors of large blood banks in desirable communities. Academic affiliations available, research potential. Previous training or experience in blood banking or hematology desirable. Chief technologists needed, ASCP Registered: Challenging leadership positions pioneering in automation, freezing and computers. Send curriculum vitae or résumé indicating geographical preference and salary requirements to **Director of Personnel, American National Red Cross, Washington, D.C. 20006.**

An Equal Opportunity Employer

POSITIONS OPEN

CLINICAL CHEMIST, with Ph.D., to supervise the special clinical chemistry section and to aid in the supervision of the general clinical chemistry laboratory. The laboratory is active, modern, well equipped and will be computerized in Fall 1970. The hospital is the major teaching hospital for the Chicago Medical School/University of Health Sciences and an academic appointment can be arranged. For additional information, please contact:

N. W. Tietz, Ph.D.
Mount Sinai Hospital Medical Center
Chicago, Illinois 60608

UNIVERSITY OF OTAGO Dunedin, New Zealand

LECTURER OR SENIOR LECTURER IN GEOLOGY (APPLIED GEOLOGY)

Applications are invited for the position of Lecturer or Senior Lecturer in Geology with special interests in applied geology, including mineral deposits.

Salary Scales:

Lecturer: \$NZ4,300 times \$200 to \$5,500 per annum.

Senior Lecturer: \$NZ5,600 times \$200 to \$7,200 per annum with a bar at \$6,600 per annum.

A particularly well-qualified candidate could be appointed at a higher level.

(Note: \$NZ100 equals £46. 13. 4 stg; \$US112; \$A100.)

Further particulars are available from the Secretary-General, Association of Commonwealth Universities (Appts), 36 Gordon Square, London, WC1H 0PF, or from the Registrar of the University.

Applications close in New Zealand and London on 1 October 1970.

CHEMIST

The Research Division of **WYETH LABORATORIES, INC.** has a senior-level position open in its Organic Chemistry-Biochemistry Department. Candidates should have a Ph.D. and ideally, several years of post-doctoral research experience in the field of nucleoside and nucleotide synthesis. He should be especially familiar with procedures for the preparation of nucleotide polymers from nucleotide monomers. **WYETH's** Research Division is located in the Main Line suburban area about 12 miles from Philadelphia.

Interested persons should send a resume of education and research experience to:

Mr. Charles L. Smith
Research Administrator

WYETH LABORATORIES, INC.

P. O. Box 8299,
Philadelphia, Pa. 19101

An Equal Opportunity Employer

Pfizer

Immunochemist

An opening has been created by the rapidly expanding Diagnostics Division for a qualified individual with responsibilities for fundamental research on immunoglobulins and in the immunohematology area. Post-doctoral or other research experience desirable.

Pfizer offers professional status plus excellent benefits and compensation. For a prompt consideration, please submit your resume or a detailed letter to **R. J. Taylor:**

PFIZER DIAGNOSTICS DIVISION

235 East 42nd Street
New York, New York 10017

An Equal Opportunity Employer

POSITIONS OPEN

BIO-INSTRUMENTATION ENGINEER

The Blood Research Laboratory of The American National Red Cross is seeking an instrumentation engineer, EE or ME preferred. The laboratory conducts basic and applied research related to the preservation and banking of blood components, tissues and organs. Position requires individual qualified to guide the development of apparatus related to the freezing and washing of blood and to assist with instrumentation of the basic research program. A well-equipped shop is available. The laboratory is in a new building adjacent to the National Institutes of Health in Maryland suburbs of Washington, D.C. Excellent working conditions, and fringe benefits. Send résumé to **Director of Personnel, American National Red Cross, Washington, D.C. 20006**. An Equal Opportunity Employer

THE UNIVERSITY OF SYDNEY (AUSTRALIA)

CHAIR OF CHEMISTRY (PHYSICAL CHEMISTRY)

Applications are invited for the Chair of Chemistry (Physical Chemistry) which became vacant on the death of Professor A. E. Alexander. A statement of Conditions of Appointment and Information for Candidates may be obtained either from the **Secretary General, Association of Commonwealth Universities, 36 Gordon Square, London, W.C.1**, or from **Registrar, University of Sydney, N.S.W. 2006**, with whom applications close on 2 October 1970.

SERENGETI RESEARCH INSTITUTE TANZANIA NATIONAL PARKS DEPUTY DIRECTOR

Applications are invited for this post which falls vacant in July 1971. The Institute is situated in the center of the Serengeti National Park and 15 senior scientists based there carry out ecological research.

The Deputy Director will be charged with the supervision and coordination of research activities, liaison with National Park authorities over management problems, and will assist the Director in the administration of the Institute. Further details will be provided upon request.

Applicants, preferably between 30 and 35 years of age, should be fluent in the English language. They should have a doctorate degree in Zoology or Botany, with several years postdoctoral experience in ecological research. A knowledge of statistical and computer techniques will be essential. Suitable administrative experience will be an advantage, as will the possession of a knowledge of Swahili and a pilot's license.

The initial appointment will be for a period of 2 years with the possibility of renewal of contract. The salary will be of the order of £ (Tanzania) 2500 p.a. with the addition of an overseas element in the case of an expatriate. Housing will be provided free.

Applications with full particulars should be sent before 31 October 1970 to the **Chairman of the Scientific Council, c/o The Director, Serengeti Research Institute, P.O. Box 3134, Arusha, Tanzania**.

UNIVERSITE LAVAL Faculté des Sciences Département de Biologie

Applications are invited for the following post in **ANIMAL ECOLOGY**. The position calls for a vertebrate ecologist trained in population biology, and interested in problems of population regulation and/or community ecology (predation, competition). The minimum salary for a Ph.D. is \$11,200. Adjustments will be made according to the candidate's experience and qualifications. The appointee is expected to teach a one-semester course in population biology and to do and supervise research in the same field. The appointee will also be required to teach a one-semester course in zoology and, to this end, should have good experience with either Mammals or Birds. The appointee will be required to teach in French. However, candidates who do not master French may apply provided they are willing to learn the language within a reasonable period. The Department of Biology has a teaching staff of 20 members and some postdoctoral fellows. Apply to:

Dr. Lucien HUOT, directeur
Département de Biologie
Faculté des Sciences
Université Laval
Québec 10, Canada

POSITIONS OPEN

UNIVERSITY OF TUBINGEN BIOLOGY DIVISION

Professorship in Biomathematics

Candidates should be mathematicians with an interest in biology and knowledge of the application of mathematical methods to biological problems.

There are possibilities for cooperation with the departments of Computer Science, Biometry, and Applied Mathematics at the University.

Duties: Special courses for advanced students and basic training of biologists in mathematics.

Applications should be received *not later than 15 October 1970* by the **Dean of the Biology Division, Auf der Morgenstelle 1, 74 Tubingen/Germany**.

POLYPEPTIDE SYNTHETIC CHEMIST

A Director for a new peptide research unit is being sought. He will be directly responsible for the development of synthetic pathways of specific polypeptides. Renowned consultants will be intimately involved in all phases of research from project selection to large scale synthesis. Ability, experience, and dedication are prerequisite. Demands upon skills and time will be impressive. Salary: \$18,000 to 25,000 annum, depending upon qualifications. The laboratory will be located about 15 miles from center of New York City. Send résumé immediately to

Box 310, SCIENCE

Neuropharmacologist

We are seeking a well-trained Ph.D. Pharmacologist whose background and interests are in Neuropharmacology to direct and operate a Neuropharmacology laboratory engaged in EEG and Electrophysiologic research. Major effort will be to design and conduct meaningful investigations related to drug induced changes in the electrical characteristics of the brain.

This position is located in our modern research laboratories located in Ann Arbor, Michigan. Good salary and fringe benefit package.

Send replies in confidence to: **Mr. D. J. Garber, Personnel Manager Research**

PARKE-DAVIS

2800 Plymouth Rd., Ann Arbor, Mich. 48106
An Equal Opportunity Employer

IMPERIAL COLLEGE OF SCIENCE AND TECHNOLOGY, DEPARTMENT OF ZOOLOGY AND APPLIED ENTOMOLOGY, SYSTEMS ANALYSIS IN RESOURCE MANAGEMENT

Applications are invited for the post of postdoctoral **RESEARCH ASSISTANT** in the Environmental Resource Management Research Unit which has been newly formed under a grant from the Ford Foundation. Duties will be to assist in the development of techniques of systems analysis and computer modeling applicable to problems in resource management. Special emphasis will be placed on resource problems in the developing countries.

Applicants should have had training in systems techniques and experience of, or an interest in applying these to resource problems. The successful candidate will be expected to work at the Silwood Park Field Station, where a terminal at the University of London's CDC 6600 computer has been recently installed. The post is tenable for 3 years.

Salary in range £1355 to £2230 p.a. depending on qualifications and experience, with F.S.S.U.

Applications (two copies), naming two referees, to: **Prof. T. R. E. Southwood, Silwood Park Field Station, Sunninghill, Ascot, Berkshire, U.K.** before 1 September 1970.

POSITIONS OPEN

RICHARD STOCKTON STATE COLLEGE OF NEW JERSEY, scheduled to open with 1000 students in September 1971, is accepting applications for **Faculty Positions at All Levels** for the 1971-72 academic year. Stockton will encourage innovation and experimentation in the undergraduate (and later, graduate) curriculum, and should appeal most to the teaching scientist or scholar who is interested in shaping exceptionally sound and significant programs. Located just outside Atlantic City, Stockton will offer the advantages of comfortable living and convenient access to Philadelphia and New York. Salaries will be competitive with most institutions.

Faculty members are being sought with backgrounds in the following areas: Ecology, Marine Biology, Mammalian Physiology, Zoology, Genetics, Botany, Microbiology, Statistics, Computer Science, General Mathematics, Inorganic Chemistry, Analytical Chemistry, Organic Chemistry, Biochemistry, and Physics. Candidates should have a strong interest in student-centered interdisciplinary work, as well as advanced work in the various disciplines. The college will open with advanced programs in Biology, Ecology, and Mathematics and will develop other areas in subsequent years. Interested persons should contact **Daniel N. Moury, Chairman/Division of Natural Science and Mathematics, Richard Stockton State College, Pleasantville, New Jersey 08232**.

VETERINARY PATHOLOGIST

Faculty position: Teaching and Service Responsibilities, Research efforts encouraged. Board certification or equivalent. Rank and salary negotiable. Forward application including curriculum vitae, transcripts and names of three (3) referees by September 1970 to: **Dr. Kenneth F. Burns, Professor and Chairman, Department of Vivarium Science and Research, Tulane University School of Medicine, 1430 Tulane Avenue, New Orleans, Louisiana 70112**.

GRADUATE STUDY

Postdoctoral Research Assistant

Studies on the regulations and mechanism of action of lipases. Interested parties should submit a curriculum vitae and references. Position available beginning September 1970. **Arnold Kaplan, Ph.D., Assistant Professor, St. Louis University, Medical School, Microbiology Department, 1402 S. Grand, St. Louis, Missouri 63304**.

Postdoctoral Traineeship for a

PROTEIN CHEMIST

is available in the Immunology Laboratory, Department of Dermatology, Tufts University School of Medicine, 136 Harrison Ave., Boston, Mass. 02111. Send curriculum vitae for immediate consideration.

The Market Place

SPECIMENS WANTED

Individual serum samples from dogs exhibiting hypersensitive (allergic) type dermatosis (50 ml). If good clinical cases, serum will be purchased. All shipping equipment will be furnished.

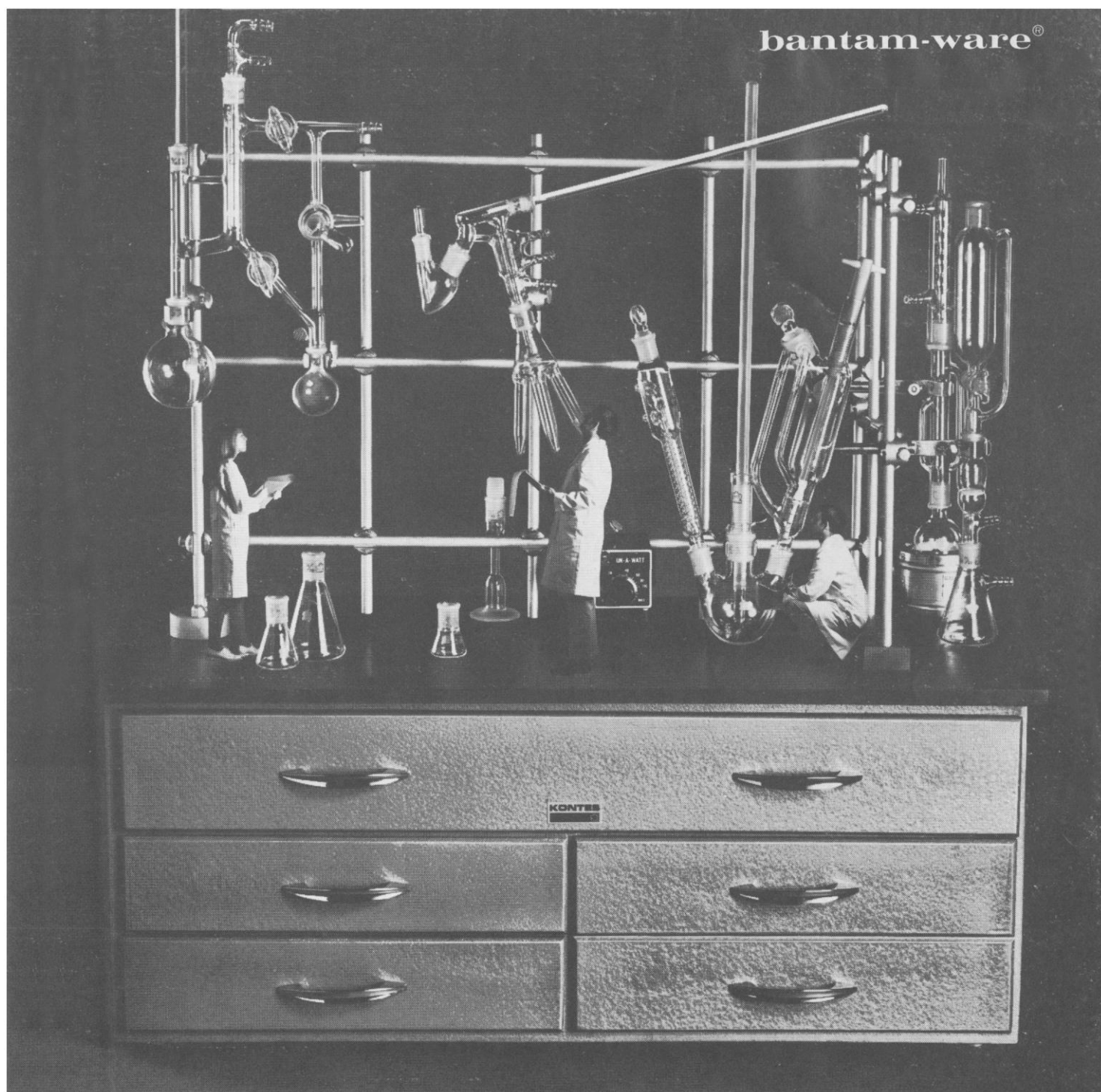
Please call collect—**Dr. Joe Albright (215) LO-4-2400, ext. 351**, for details.

advanced analytical services in protein characterization

- amino acid analysis
- analytical ultracentrifugation

WORTHINGTON

Ask for full information
Worthington Biochemical Corporation
Freehold, New Jersey 07728
Phone (201) 462-3838



WORK SMALL. THINK BIG.

Easy to do with our semi-micro scale Bantam-ware® Kit and accessories.

All you need is 2.5 square feet of bench space to set up a complete organic laboratory. Then think as big as you like because all the components included are interchangeable with over three hundred other items in the Bantam-ware line.

The kit is as functional as it is flexible. A sturdy cabinet base puts everything at a convenient bench-top level . . . everything necessary for fractionation, steam, atmospheric and vacuum distillation, chro-

matographic analysis, extraction, filtration, reflux and separation.

The big features of Bantam-ware are quality construction and functional design: the finest $\frac{1}{4}$ 14/20 ground joints available, gradual bends, even glass distribution, minimal travel paths and wetted surfaces, uniformly cylindrical outer walls, and glass support rods for all potential points of stress.

You can start with any one of four Bantam-ware kits complete with heating, agitating, clamping and support equipment. All the kits are

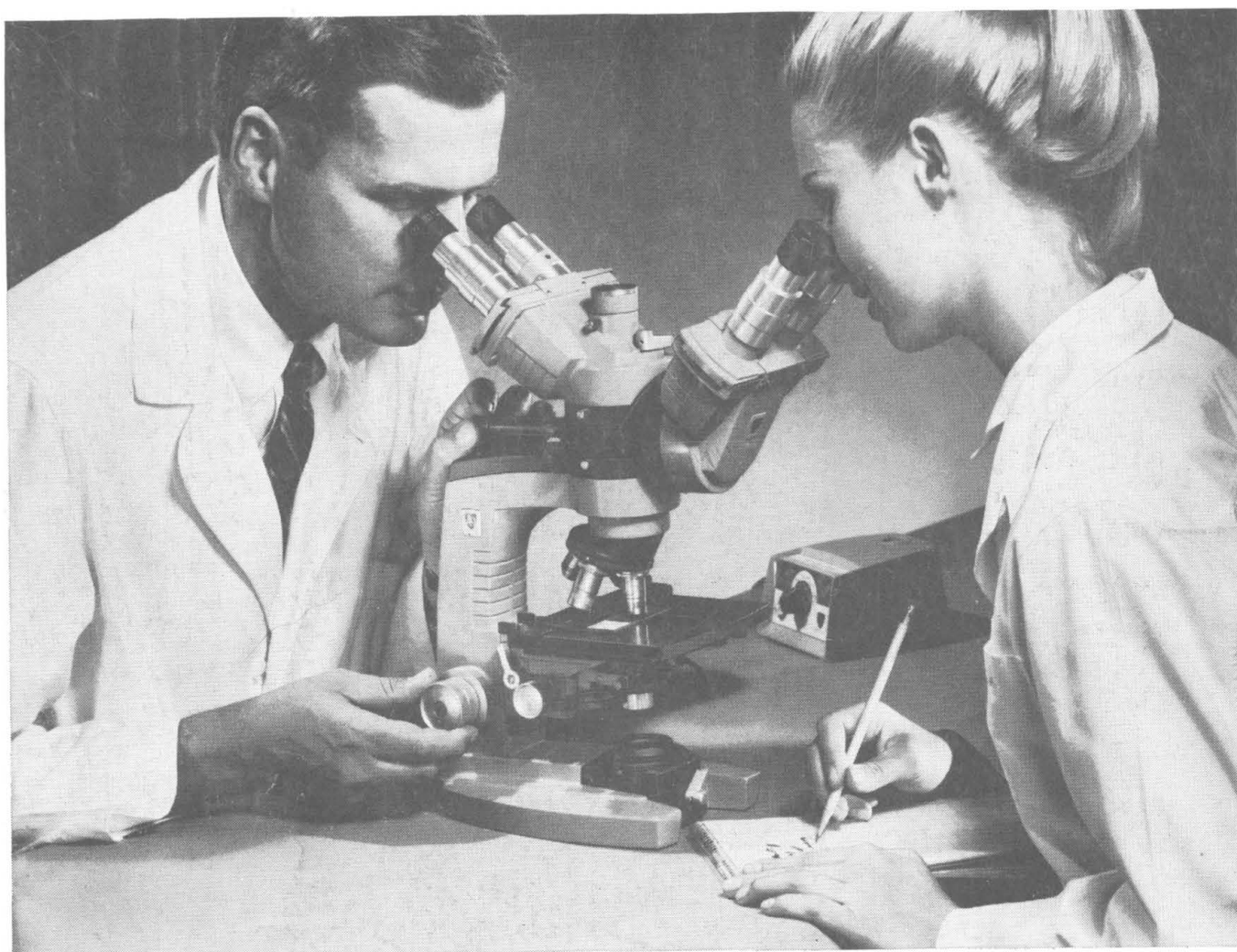
available with glass or Teflon* stop-cock plugs and spherical joints $\frac{1}{8}$ (18/9) on inclined condenser connections.

To determine which kit is best suited to your semi-micro needs, or to get more information about the Bantam-ware line in general, contact your Kontes representative or write:

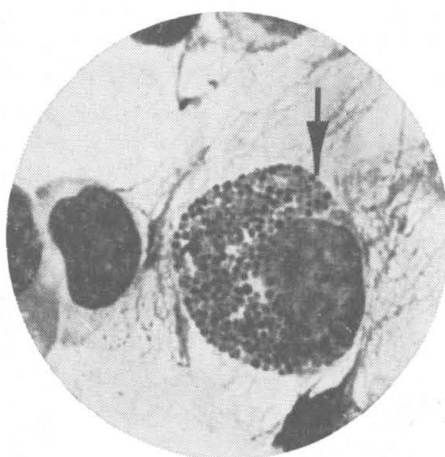
*Trademark of Kontes Glass Co. *Trademark of DuPont

KONTES 
Vineland, N.J. 08360

Regional Distributors: **KONTES OF ILLINOIS**, Evanston, Illinois • **KONTES OF CALIFORNIA**, Berkeley, California
Circle No. 12 on Readers' Service Card



AO Dual Viewing Microstar[®] for more effective communication



Two people can see the same image simultaneously without sacrificing image quality, adjustment time or superb operating convenience.

Each viewer enjoys the same sharp image over the entire field. The Microstar Microscope's unique infinity-corrected optical system eliminates blurred and fuzzy edges.

For cross-reference, an illuminated, transparent pointer is superimposed on the field. It can be positioned instantaneously to pinpoint specific slide areas or minute details of the specimen.

The Autofocus stop saves every-

®TM Reg., American Optical Corp.

body's time . . . eliminates wasted motion. It simplifies coarse adjustment so that perfect focus is merely a matter of touching up the fine adjustment. And, since the nosepiece is gravity-loaded, it's practically impossible for you to break slides or to damage the objective.

Applications are unlimited—for a second opinion, immediate verification, continuous observation or routine lab training. Whenever accurate communication is essential, consider the AO Dual Viewing Microstar.

For more information, call your AO Sales Representative or write.



**AMERICAN OPTICAL
CORPORATION**

SCIENTIFIC INSTRUMENT DIVISION • BUFFALO, N.Y. 14215
Circle No. 16 on Readers' Service Card