

Personnel Placement

POSITIONS WANTED

Biochemist, Ph.D. Undergraduate chemistry teaching experience. Research experience in purine, nucleic acid, carboxypeptidase, and cancer biochemistry. Publications. Desires teaching-research position. Box 294, SCIENCE.

M.S. experienced in life and environmental sciences seeks association with small production enterprise to share development of timely instrumentation. Box 291, SCIENCE. 7/31

Microbiologist, Ph.D., 1968. Experience—Sanitary engineering, water microbiology, microbial ecology and physiology, electron microscopy. Publications. Seeks industrial position. Box 301, SCIENCE.

Neurophysiologist, Ph.D. 1970 Electrophysiologist with background in neurochemistry and radiation biology. Desires teaching and/or research position. Publications. Box 302, SCIENCE.

Parasitologist, Male 32, Ph.D. in Preventive Medicine, September 1970; 4 years of laboratory experience; 2 years at a State Hygienic Laboratory. Seeks postdoctoral, administrative and/or research position. Box 303, SCIENCE.

Pharmacologist, Ph.D. 1969. Desires position oriented toward product promotion or sales. Research and teaching experience; publications. Prefer Midwest or South. Box 304, SCIENCE.

Radiobiology-Chemistry-Medical Science: M.S.+B.S., B.A. Ph.D. tools: Computer Science, French. Graduate honors 3.6/4.0. Three years' experience VA isotopes research; academic research, tumor cells. Honorably discharged. Desires mainly research, medical/chemical, or fellowship United States/Canada. Available immediately. Box 305, SCIENCE. 8/7

POSITIONS OPEN

UNIVERSITÉ LAVAL ELECTRICAL ENGINEERING DEPARTMENT

Applications are invited for a staff position in electronics. Applicants should have Ph.D. and experience in instrumentation and circuit design (linear and digital). The successful applicant will participate in teaching electronics courses (undergraduates and graduate) and will be expected to develop an active research program within the bioelectronics, communications, or quantum electronics group of the department. Workable knowledge of French essential, at least within 1 year of appointment. Salary floors are: Assistant Professor: \$10,600. Associate Professor: \$12,000. Inquiries, accompanied by curriculum vitae, should be sent to: **Dr. D. Angers, Director, Dept. of Electrical Engineering, Université Laval, Quebec 10, P.Q., Canada.**

UNIVERSITY OF OTAGO Dunedin, New Zealand LECTURER IN PHYSICAL CHEMISTRY

Applications are invited for the above-mentioned position in the Department of Chemistry. Applicants should hold a Ph.D. degree or its equivalent and have had some postdoctoral teaching or research experience in physical chemistry. Preference may be given to applicants with research experience in one of the following fields: non-electrolyte mixtures or polymer solutions, surface chemistry, fundamental aspects of chemical kinetics or theoretical chemistry, but other fields of experience will be considered. It would be an advantage to be able to teach statistical thermodynamics as well as general physical chemistry.

Salary Scales:

Lecturer—\$NZ4,300 × \$200—\$5,500 per annum.

Senior Lecturer—\$NZ5,600 × \$200—\$7,200

per annum; with a bar at \$6,600 per annum. (Note: \$NZ100 equals £46.13.4 stg; \$US112, \$A100)

Further particulars are available from the Secretary-General, Association of Commonwealth Universities (Apts), 36 Gordon Square, London WC1H 0PF, or from the Registrar of the University.

Applications close in New Zealand and London on 15 September 1970.

POSITIONS OPEN

BIOCHEMICAL PHARMACOLOGIST OR BIOCHEMIST

(up to 3 years' postdoctorate experience) to assist in the preclinical pharmacological evaluation of Cancer Chemotherapeutic agents. Biochemical and metabolic studies and collaboration in toxicological investigations.

BOX 299, SCIENCE

Ph.D. PHARMACOLOGIST

Director of research in the pharmacology division of a small, but rapidly expanding pharmaceutical company. All inquiries held in the strictest confidence.

BOX 300, SCIENCE

SWISS FEDERALE INSTITUTE OF TECHNOLOGY ZURICH

For October 1st or upon agreement a position as

Professor for Geophysics combined with the management of the Geophysical Institute is to be filled.

Applicants are invited to submit their resume, together with available scientific publications by July 31, 1970 to the President of the Swiss Federal Institute of Technology Zurich, Leonhardstr. 33, 8006 Zurich (Switzerland).

UNIVERSITY OF ADELAIDE CHAIR OF PLANT PATHOLOGY

Applications are invited for appointment to the above-mentioned post which is to be relinquished by Professor N. T. Flentje at the end of August when he becomes Deputy Vice-Chancellor of the University.

The Department of Plant Pathology is part of the Waite Agricultural Research Institute, and like other departments of the University it is responsible for both teaching and research; but the teaching load is light. Research projects in the Department at present include studies in bacteriology, mycology, nematology, soil microbiology, virology and physiology in relation to plant disease.

SALARY: \$A14,400 a year with superannuation on the F.S.S.U. basis.

FURTHER INFORMATION: Potential candidates are invited to obtain from the Secretary-General, Association of Commonwealth Universities (Apts), 36 Gordon Square, London, WC1H 0PF, or from the Registrar of the University a more detailed Statement about the Chair and formal terms of appointment. Any further information desired may be had on request to the Registrar.

APPLICATIONS (in duplicate) giving the particulars listed in Paragraph 6 of the Statement should reach the Registrar of the University, North Terrace, Adelaide, South Australia, not later than 30 September 1970.

UNIVERSITY OF OTAGO Dunedin, New Zealand LECTURER OR SENIOR LECTURER IN ZOOLOGY

Applications are invited for the above-mentioned position, from graduates with qualifications in any field of Zoology, but preference may be given to applicants whose main interests are in one of the following fields: Biometry; General Invertebrate Zoology with a special interest in Experimental Parasitology; Animal Behaviour.

Salary Scales:

Lecturer—\$NZ4,300 × \$200—\$5,500 per annum

Senior Lecturer—\$NZ5,600 × \$200—\$7,200 per annum with a bar at \$6,600 per annum.

A particularly well-qualified candidate could be appointed at a higher level. (Note: \$NZ100 equals £46.13.4 stg; \$US112, \$A100).

Further particulars are available from the Secretary-General, Association of Commonwealth Universities (Apts), 36 Gordon Square, London, WC1H 0PF, or from the Registrar of the University.

Applications close in New Zealand and London on 15 September 1970.

Ph.D. Immunologist- Immunobiologist

YOUR GOALS

- Responsibility for development and direction of a timely research program.
- Involvement in basic, long-term research.
- Freedom to perform own research within framework of overall program, and publish accordingly.
- Work in a challenging environment, with excellent facilities.
- Excellent salary and benefits program.

OUR NEEDS Two Senior Level Positions

- One position is for a senior immunologist with about 5 or more years experience. Should have demonstrated expertise, with interest in cellular immunology and hypersensitivity and some background in chemistry. Duties involve coordination of long range basic research in our growing anti-arthritis/immunopressive program.
- The other position, also for a senior immunologist, requires a microbiological orientation. Some post-doctoral/industrial experience highly desirable. Duties involve research in the immunology of micro-organisms.

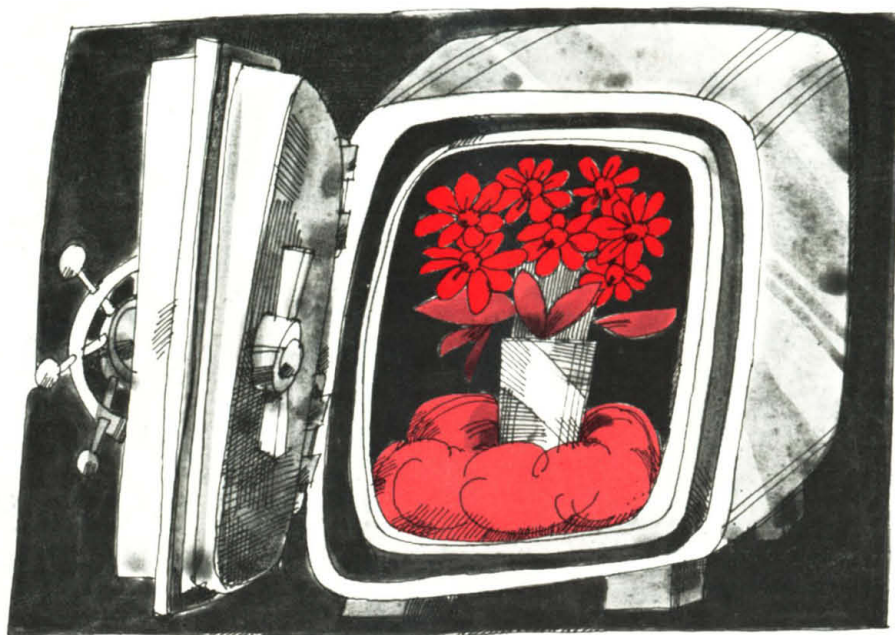
If your goals match our needs, consider sending your curriculum vitae to us.

Francis J. Beston

Director of Scientific Employment
Smith Kline & French Laboratories
1506 Spring Garden Street
Philadelphia, Pennsylvania 19101

SK
&F

An Equal Opportunity Employer



Preserve and protect.

THINK ABOUT GAMMA COUNTING.
THINK ABOUT SAFE, GENTLE SAMPLE HANDLING.
THINK ABOUT SHIELDING AGAINST BACKGROUND.
THINK ABOUT OUR SYSTEMS FOR DOING IT ALL.

A simple, up-down elevator is at the heart of our gamma systems. So every sample—regardless of length—is accurately, positively, *gently* bottomed in the well detector. And you can intermix sample vials of varying lengths if you'd like.

After the sample vial is in the well detector, then comes the problem of protecting against background radiation. Solved in our gamma systems with *more* of the right shielding (4 inches of graded shielding around, 3 inches of graded shielding below, and 12 inches of lead-tungsten-steel above the sample). All strategically placed. Plus a layer of steel below every sample in the sample conveyor. Result: background contribution constant and almost always statistically negligible.

Preserve and protect your samples. And pick a data

format. The one you need. One, two, three, four, or more channels. You tell us. Our gamma systems are modular, upgradeable.

Tell us, too, whether you want 3-inch or 2-inch detector crystals (^{125}I if desired). Choose CPM, DPM, or percent readout with real-time background subtraction.

Finally, in our gamma systems, reliability is to be taken for granted. Because of the field-proved sample elevator and conveyor. Because of the stable low background. And because of our highly trained, easy-to-get-hold-of service personnel who see to it that things keep going smoothly.

Those are the highlights of our gamma-counting story. For the full details, call your Nuclear-Chicago sales engineer. Or write to us.

0-219

Series 4200 Gamma-Counting Systems



NUCLEAR-CHICAGO

A SUBSIDIARY OF G. D. **SEARLE** & CO.

2000 Nuclear Drive, Des Plaines, Illinois 60018, U.S.A.
Donker Curtiusstraat 7, Amsterdam W. The Netherlands

ALS-293