

You'll have no more problems incorporating aqueous solutions into toluene liquid-scintillation cocktails with Beckman exclusive Bio-Solv solubilizers. They offer highest counting efficiencies — 80-90% for ^{14}C ; 100%, ^{36}Cl ; 30-40%, ^3H — while problems of phosphorescence and chemiluminescence are eliminated. And you save money because you're not dealing with high-cost dioxane cocktails. The BBS-2 is for alkaline tissue preparation; BBS-3 for concentrated aqueous, salt, urine, and plasma samples. Try Bio-Solv on your samples, and see

how it can solve your problems. A convenient Starter Kit is now available for same-day shipment. Specify Order Number 566320, Bio-Solv Starter Kit, \$14.00. Scientific Instruments Division, Beckman Instruments, Inc., 2500 Harbor Boulevard, Fullerton, California 92634.

Beckman

INSTRUMENTS, INC.

INTERNATIONAL SUBSIDIARIES: AMSTERDAM; CAPE TOWN; GENEVA; GLENROTHES, SCOTLAND; LONDON; MEXICO CITY; MUNICH; PARIS; STOCKHOLM; TOKYO; VIENNA

Problem-solution solution:

Bio-SolvTM
solubilizers



Circle No. 91 on Readers' Service Card

Advertisers judge their advertising results by the number of responses to their ads. They also pay half the publishing cost of Science. Use the Readers' Service Card to contact manufacturers.

**Minigraph...
the sensitive
miniature
recorder**

priced at \$99.50*

No matter what your budget—in classroom or in laboratory—you can now afford to automatically record data with the Esterline Angus Minigraph.

It's ideal for experimental work because its electrical requirements are negligible (as low as 10 microamperes full scale). And the Minigraph can be used in an almost limitless variety of circuits.

The rugged, compact (3 1/8" x 5 1/8" x 4 3/8") Minigraph writes its record on pressure-sensitive paper. There's no ink to spill and no stylus to overheat. You can choose from 14 chart speeds—1/4" per hour to 60" per hour.

*Prices range from \$99.50 to \$160.00, depending upon features and options required. Liberal special discounts are available to OEM's.

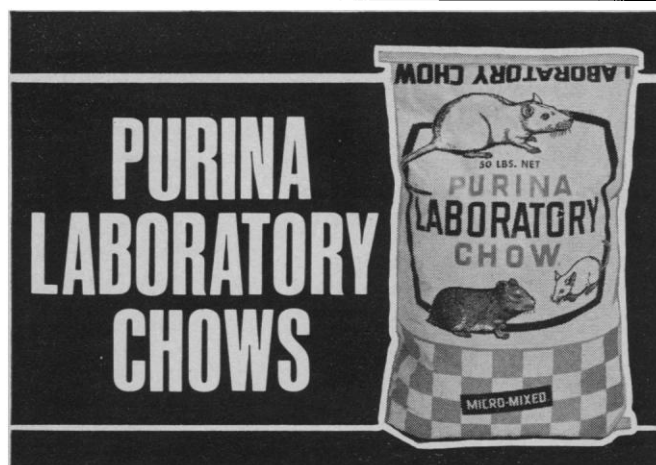
Get our colorful Minigraph brochure. Write or call us.



ESTERLINE ANGUS

Division of Esterline Corporation
Box 24000 • Indianapolis, Indiana 46224
Telephone 317/244-7611

Circle No. 105 on Readers' Service Card



RESEARCH-PROVED

All Purina Laboratory Chows are:

- specifically formulated to meet the nutritional needs required by the animal.
- Micro-Mixed to assure complete nutrition in every Checker.
- biologically assayed.
- manufactured under strict controls to help prevent drug contamination.

Call your Purina dealer listed in the Yellow Pages under "Feed Retail". Or write Laboratory Animal Research Center, Ralston Purina Company, Checkerboard Square, St. Louis, Missouri 63199 for complete information on all Purina Laboratory Chows.



Circle No. 106 on Readers' Service Card

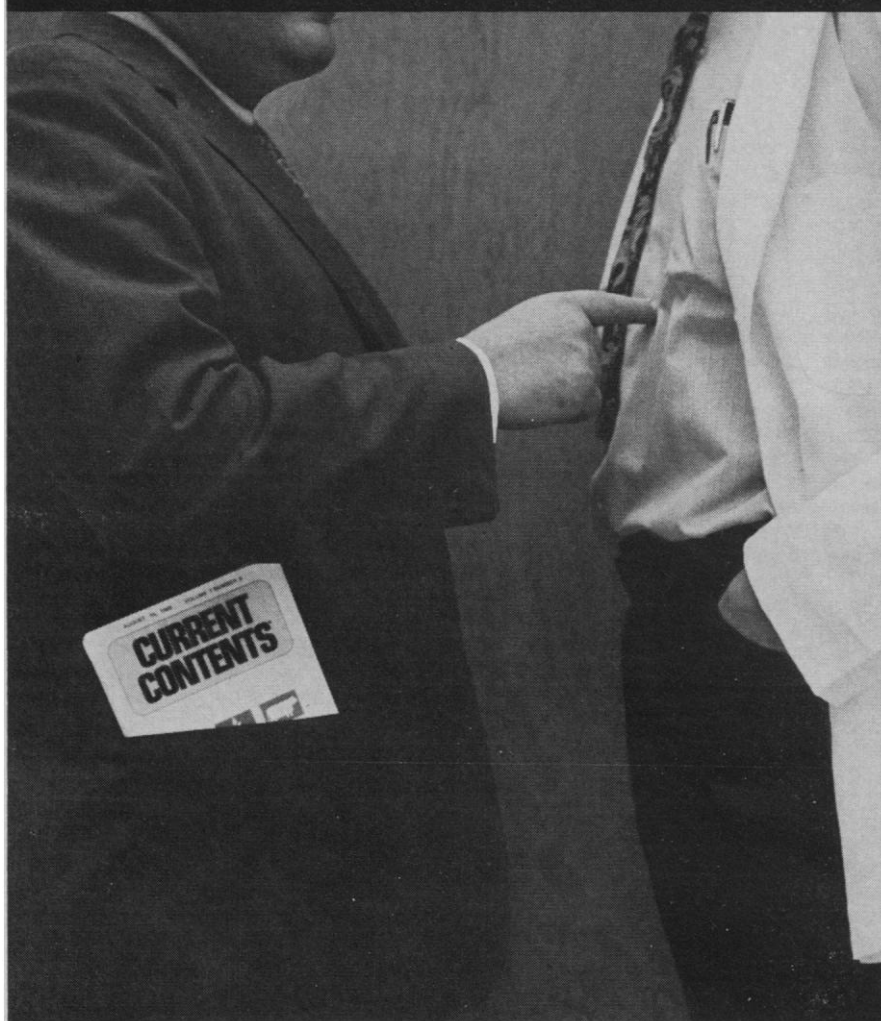
Index of Advertisers

5 June 1970

Academic Press	1261
Bausch & Lomb, Scientific Instruments Div.	1253
Beckman Instruments, Inc.	1266
Bell & Howell, Electronics and Instrument Group	1202, 1203
Bio-Rad Laboratories	1152
Blue M Electric Co.	1256
Bronwill Scientific, Inc.	1257
Buchler Instruments, Inc.	1260
Carver, Fred S., Inc. (subsidiary of Sterling, Inc.)	1258
Cary Instruments, a Varian subsidiary	1200, 1259
Charles River Breeding Laboratories, Inc.	1263
Chemical Rubber Co.	1155
Chromatronix	1269
Coleman Instruments Div., Perkin-Elmer Corp.	1143, 1252
Dole Co.	1199
E-C Apparatus Corp.	1256
Electronic Associates, Inc.	1154
EPOI Photo-Technical Products Div., subsidiary of Ehrenreich Photo-Optical Industries, Inc.	1153
Esterline-Angus Instrument Co.	1266
Fabri-Tex Instruments Inc.	1138
Gelman Instrument Co.	1140
Hamilton Co.	1139
Heat Systems-Ultrasonics, Inc.	1264
Houghton Mifflin Co.	1265
Institute for Scientific Information	1267
ISCO	1254
Jeolco U.S.A., Inc.	1150
Kelvinator Commercial	1258
Klett Manufacturing Co., Inc.	1258
Kontes Glass Co.	1251
Labindustries	1142
Lakeview Hamster Colony	1255
Manostat, Div. of Greiner Scientific Corp.	1255
Mettler Instrument Corp.	1205
Millipore Corp.	1268
Nalgene Labware Div., Nalge Co., Div. of Sybron Corp.	1147
National Appliance Co.	1134, 1135
Norton Plastics & Synthetics Div.	1265
Nuclear-Chicago Corp.	1272
Ohaus Scale Corp.	1251
Olympus Corporation of America	1204
Optronics International, Inc.	1264
Owens-Illinois	1206
Packard Instrument Co., Inc.	1148
Paillard Inc.	1156
Perkin-Elmer Corp.	1262
Photovolt Corp.	1201
Plenum Press/Consultants Bureau	1262
Professional Tape Co., Inc.	1258
Ralston Purina Co.	1266
Randolph Co.	1150A
Sargent-Welch	1146
Scientific Products	1145
Shandon Scientific Co., Inc.	1252
Sigma Chemical Co.	1261
Sorvall, Ivan, Inc.	1271
Torsion Balance Co.	1259
Union Carbide Corp.	1149
Unitron Instrument Co.	1144
Varian Aerograph	1158
Zeiss, Carl, Inc.	1141

5 JUNE 1970

Does your colleague know something you don't know?



Check his pocket.

If you see a copy of "Current Contents" there, you can bet he does. That pocket-sized weekly publication reproduces the contents pages of every important journal published here or abroad in your field. All he has to do is scan *Current Contents* for comprehensive current awareness. If he sees something especially interesting, he sends off a card to us for original tear sheets of the article, or corresponds directly with the author, whose name and address is included.

Shouldn't you know as much as he does?

©1970 ISI®

There are seven editions of *Current Contents*, one or more specifically in your field. Check the one(s) you're interested in and we'll send you a sample copy along with full details, including advantageous group and educational subscription rates.

Current Awareness in Your Pocket

Institute for Scientific Information
325 CHESTNUT ST., PHILADELPHIA, PENNSYLVANIA 19106, USA
 132 HIGH ST., UXBIDGE, MIDDLESEX, UK
 OFFICES IN WASHINGTON, D.C.; PARIS, FRANCE; TOKYO, JAPAN
 TELEPHONE: (215) 923-3300. TELEX: 84 5305. CABLE: SCINFO

I am interested in Current Contents® S-6/J-0

☐ Life Sciences
 ☐ Agricultural, Food & Veterinary Sciences

☐ Physical Sciences
 ☐ Behavioral, Social & Management Sciences

☐ Chemical Sciences
 ☐ Engineering & Technology

☐ Education
 ☐

Name/Title _____

Your Discipline _____

Organization _____

Address _____

City _____ State _____ Zip _____

Country* _____

*European subscribers receive special air mail service without cost.

Circle No. 32 on Readers' Service Card

1267

Is a still still the best source of high-purity water for the laboratory?

When a laboratory needs high-purity water to use as a solvent, diluent, reagent or cleaning agent, there has been no good reason to question that distilled water is the logical choice.

Now there is a good reason. The Millipore Super-Q System does about everything a still can do and, in many cases, does it more effectively and more efficiently.

The Super-Q System consists essentially of disposable cartridges for prefiltration, organic adsorption, deionization and Millipore filtration.

It can produce 18 megohm water from tap water. A still ordinarily produces 1/2 megohm water. 20 successive distillations in quartz would be required to equal the ionic purity achieved by the Super-Q mixed-bed ion exchange cartridge. (It's easier to remove one part impurity from 10 million parts of water rather than the reverse.)

The Super-Q System produces 20 gallons of water an hour and is small enough to fit comfortably in the laboratory, under laboratory control. A still with this capability would take at least five times the space.

Because of its high output rate, the Super-Q System usually eliminates the need to store water. Storage is often necessary with stills, introducing the problem of contamination by containers and lines.

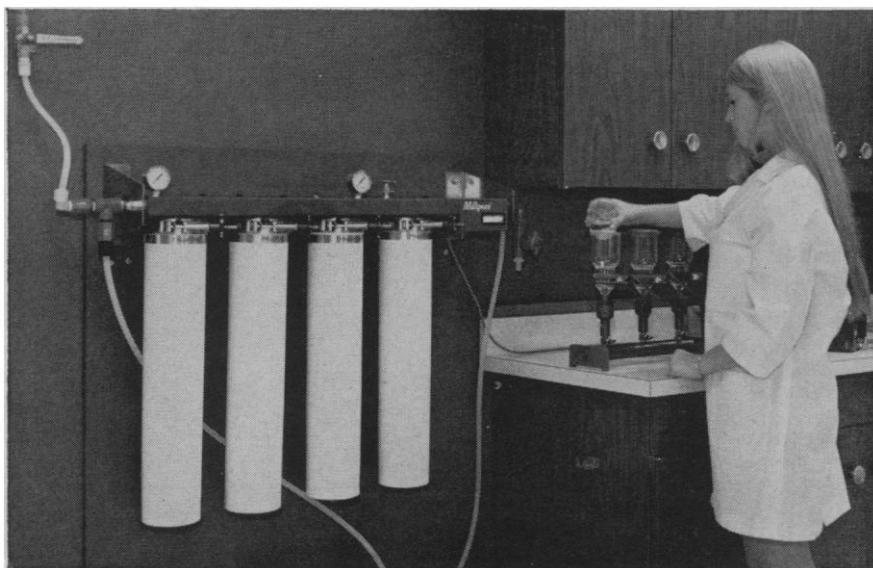
Maintenance is negligible with the Super-Q System because it uses disposable cartridges. Stills must be meticulously maintained; and when water is supplied from a central still, maintenance (and water quality) is beyond the control of the laboratory.

Millipore filtration, the final Super-Q cartridge, removes all particles and microorganisms larger than filter pore size (typically 0.45 micron). Stills can only reduce particulate contamination.

Good reasons why you should investigate the possibility that the Super-Q System might be a better source of high-purity water for your laboratory.

Write for detailed information. Millipore Corporation, Bedford, Massachusetts 01730.

MILLIPORE
systems for analyzing and processing fluids



Circle No. 31 on Readers' Service Card

Personnel Placement

POSITIONS WANTED: 40¢ per word, minimum charge \$10. Use of Box Number counts as 10 additional words. Payment in advance is required. These rates apply to individuals only. Personnel agencies and companies take display rate for all advertising.

POSITIONS OPEN: \$7 per column line, if publisher's type is used (12 lines = 1 inch). Minimum ad is 12 lines or \$84. All ads using larger than 6 point type will be billed as display ads at \$100 per inch. No charge for Box Number. Rates net. No agency commission allowed for ads under 4 inches. No cash discount. Ads over 1 inch will be billed to the nearest half inch. Payment in advance is required except where satisfactory credit has been established.

COPY for ads must reach **SCIENCE** 4 weeks before issue date (Friday of every week). Send copy for Personnel Placement advertising to:

SCIENCE, Room 211
1515 Massachusetts Ave., NW
Washington, D.C. 20005

Replies to blind ads should be addressed as follows:

Box (give number)
SCIENCE
1515 Massachusetts Ave., NW
Washington, D.C. 20005

POSITIONS WANTED

Enzyme Biochemist, M.S., and Ph.D. Interested in academic, industrial, or postdoctoral positions. Experience in bacterial enzyme induction, isolation and purification techniques, chemical and kinetic characterization, radiochemical, spectroscopy, chromatography, electrophoretic techniques, etc., all related to structure-function relationship of allosteric enzymes. M.S. experience in carbohydrate metabolism. Publications. Location open. Box 234, **SCIENCE**. X

Histologist/Anatomist, Ph.D., teaching/research experience, 70 publications including books, seeks senior research/teaching position. Box 235, **SCIENCE**. X

Microbiologist, Ph.D., Associate Prof. Strong background in animal virology, pathogenic bacteriology, tissue culture and germfree animal research. Publications. Teaching/Research desired. Available Fall 1970. Box 224, **SCIENCE**. 6/5

Neurophysiologist, Ph.D., 1970. Desires research position with some teaching. Broad background with specialization in toxicology. Box 225, **SCIENCE**. 6/5

Organic Synthetic/Analytical Chemist, Ph.D. 1969. One-year postdoctoral. Extensive experience in i.r., u.v., C.D., and mass spectrometry. Seeks permanent position in research, in industry, or teaching or postdoctoral. Overseas appointment considered. Box 236, **SCIENCE**. X

Pharmacologist-Physiologist, Ph.D. Teaching and research experience, publications and grant. Seeking teaching and/or research position. Box 237, **SCIENCE**. X

Programmer/Analyst wants to enter Ecology/Bio-medical areas. Varied background. M.A. Four years of general systems/applications. Résumé. R. Rose, 6 Phillips St., Boston, Mass. 02114. 6/12

Science Writer, Ph.D., Pharmaceutical and biomedical research experience. Writing ranges from highly technical to philosophical. Box 228, **SCIENCE**. X

Toxicologist, Ph.D., special experience in pollution, carcinogenesis and cytostatics; numerous publications, seeks industrial or research position. Box 238, **SCIENCE**. X

POSITIONS WANTED

Translations from German. Fast, exact. Send text; will be returned with translation and billed at \$20/M. Lee Stavenhagen, Ph.D., Box 1141, Galveston, Texas 77550. X

Virologist, D.V.M., Ph.D. 1970. Prior research experience. Desires research position: university/research institute. Available September 1970. Box 239, SCIENCE. X

POSITIONS OPEN

AUSTRALIA

UNIVERSITY OF SYDNEY

Director of First-Year Courses in Physics

Appointee will take responsibility for organization of lecture and laboratory courses in Physics I, initiate improvements in these courses and participate in staff-student liaison work.

Enquiries to H. McCredie, Registrar, University of Sydney, N.S.W. 2006, Australia, who will send particulars by return air mail.

CAWTHRON INSTITUTE

Applications are invited from **BIOCHEMISTS** and **MICROBIOLOGISTS** for positions on the research staff of the Institute, for studies in the field of water and soil microbiology. Salary dependent on experience but within the range NZ \$4240 to \$6495 per annum. Four weeks of annual leave, superannuation scheme, and travel assistance provided. The Institute is in the process of moving to modern new laboratories. For further particulars contact: **The Director, Cawthron Institute, P.O. Box 175, Nelson, New Zealand.**

PHARMACOLOGIST —Ph.D.—

Seeking a Ph.D. with strong background in Pharmacology with interests and training in the gastrointestinal system. Person will participate in planning and pursuing studies in a fundamental research program. This program is designed to develop new chemotherapeutic agents for use in gastrointestinal disorders. Will supervise a group of three junior scientists.

Position offers an opportunity to work closely with scientists trained in a variety of disciplines.

Excellent salary and benefits. Reply in confidence to Francis J. Beston, Director of Scientific Employment



**SMITH KLINE & FRENCH
LABORATORIES**

1502 Spring Garden Street
Philadelphia, Pa. 19101

An Equal Opportunity Employer

POSITIONS OPEN

ASSISTANT PROFESSOR—Ph.D. with specialization in physiological chemistry. Teaching and research responsibilities in hormonal and molecular aspects of muscle growth and of biochemical changes in meats. Starting salary \$11,000; open 1 September 1970. Forward applications, including curriculum vitae, transcripts and names of three referees, by 1 August to **Chairman, Department of Animal Science, Faculty of Agriculture, The University of Alberta, Edmonton 7, Alberta, Canada.**

Faculty Position in Bioengineering

At a large midwestern university. Experience and/or training in Bioengineering necessary. Rank and salary commensurate with experience.

Box 231, SCIENCE

ECOLOGIST

Quantitative background, interested in marine realm. Zooplankton background and interest preferred. Rank/salary open. Application, curriculum vitae, names of three references to: **Garth Murphy, Chairman, Department of Oceanography, 2525 Correa Road, University of Hawaii, Honolulu, Hawaii.**

MARKETING MANAGER FOR BIOLOGICALS

Established growth oriented biological producer is seeking an ambitious, qualified individual to direct marketing activities. Responsibilities would encompass new product planning, including market introduction and promotion, preparation of product and institutional promotional programs, and market research.

Background Qualifications:

Degree
7 to 10 years of applicable experience
Demonstrated capacity of leadership

Salary—Commensurate with qualification

Résumés invited:

Box 232

SCIENCE

1515 Massachusetts Ave., NW

Washington, D. C. 20005

An Equal Opportunity Employer

MEDICAL TERMINOLOGY CONSULTANT

Recent advances in medical science require a highly qualified person to become a Research Librarian and Editorial Consultant in the Department of Medical Terminology. Educational background in English or Journalism with a definite knowledge of biomedical sciences, excellent reading knowledge of German and French. Considerable experience as a medical translator, abstractor, record or medical librarian with coding background essential. Responsible for reading medical journals in foreign languages. Translate and abstract pertinent data, verify material by comparing with new textbooks and correlate information to avoid duplication for computerization. Excellent salary with many benefits. Submit detailed résumé including salary requirements to **C. A. Benton, AMERICAN MEDICAL ASSOCIATION, 535 North Dearborn, Chicago, Illinois 60610.**

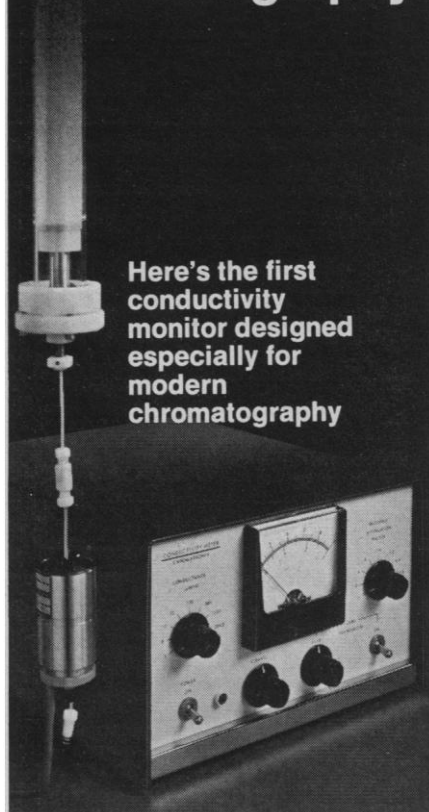
An Equal Opportunity Employer



**Your Fair Share Gift
Works Many Wonders
THE UNITED WAY**

27 million families benefit by child care, family service, youth guidance, health programs, disaster relief and services for the Armed Forces from 31,000 United Way agencies.

New tool for chromatography



Here's the first
conductivity
monitor designed
especially for
modern
chromatography

This new monitor detects conductivity as low as .001 μ mho (.01 ppm NaCl) using a flow-through cell with only 1.5 microliters volume. Response is linear at the recorder output over a million-to-one range from .001 to 1000 μ mhos.

The monitor aids preparative chromatography by accurately detecting the salt peak in gel filtration—so you can check column performance or control sample injection, fraction collection, and recycling.

The monitor is ideal for analytical chromatography of inorganic solutes. It will quantify trace components—even in conductive solvents, since the meter has zero suppression.

People doing research on chromatography will find the monitor valuable for studying gradients, step elution changes, and zone spreading.

Chromatronix also offers a new ultrasensitive, wide-range UV detector. Inquiry will bring you literature on it as well.



CHROMATRONIX

Chromatronix, Incorporated, 2743 Ninth St. Berkeley, Calif. 94710. Phone (415) 841-7221.

Circle No. 93 on Readers' Service Card

MICROBIOLOGIST

We are seeking an experienced Microbiologist (Ph.D.) to head a Research Department charged with finding and developing drugs for the treatment of bacterial, fungal and viral diseases of man.

Qualifications required include a broad background in medical microbiology and biochemistry and at least 10 years postdoctoral experience in research on infectious diseases.

Please send resume including salary requirements in confidence to: Mr. Fred J. Rella



LEDERLE LABORATORIES
American Cyanamid Company

PEARL RIVER, NEW YORK

An equal opportunity employer

PHARMACOLOGIST

Lederle Laboratories, a leading pharmaceutical manufacturer offers an opportunity for a Ph.D. Pharmacologist to evaluate results of preclinical studies.

This person should have 3 to 5 years experience as a Research Pharmacologist in the pharmaceutical industry or full time toxicological research experience in the university. Ability to summarize and evaluate animal scientific data is essential. Scientific editing experience in biology or medicine is desirable.

Liberal benefits and excellent working conditions. Location within 45 min. of New York City.

Please send resume and salary history to:

Mr. Fred J. Rella



Lederle Laboratories
American Cyanamid Company

Pearl River, New York

An equal opportunity employer

POSTDOCTORAL RESEARCH ASSOCIATE

For project on ionic fluxes in neural tissue. New well-equipped laboratory. Neurophysiology and/or biochemistry background desirable. Start in July. Stipend open. Send curriculum vitae to Stanley Buckser, Ph.D., Southern College of Optometry, 1245 Madison Avenue, Memphis, Tennessee 38104.

THE UNIVERSITY OF ALBERTA NORTHERN DEVELOPMENT

The Boreal Institute for Northern Studies, The University of Alberta, is undertaking a systematic inventory of resources in Northern Canada and a systems analysis of the alternative ways in which these resources will be developed. Benefits and costs of each alternative will be estimated. The analysis will take into account the social and ecological impact of resource development in sub-arctic and arctic areas.

The Institute seeks the services of a Research Associate to work on this project under the direction of the Senior Research Associate.

Applicants should be applied scientists, quantitatively oriented and a proven ability to do research. Experience in systems analysis or applied ecology would be desirable.

Initial salary is negotiable.
Please reply with résumé to:

Professor J. Jameson Bond
Executive Director
Boreal Institute
The University of Alberta
Edmonton 7, Alberta
Canada

UNIVERSITY HOSPITAL DEPARTMENT OF NUCLEAR MEDICINE

University Hospital, the principal teaching hospital of the Faculty of Medicine of the University of Western Ontario, London, Ontario, Canada, is a 435-bed institution presently under construction, with completion scheduled for May 1972. The Hospital is seeking a qualified and experienced physician to be in charge of its Department of Nuclear Medicine. Applicants for the position are asked to send detailed résumé of qualifications with listings of publications and names of at least two references, to the attention of Dr. J. B. Neilson, Executive Director, University Hospital, 660 Richmond Street, London 12, Ontario, Canada.

Ph.D. VIROLOGIST

HAZLETON LABORATORIES, specializing in the life and environmental sciences, needs a Senior Virologist to direct a major government contract in assessing the viral etiology of mammalian cancer. Applicant should be experienced in viral oncology, have direct working knowledge of all aspects of cancer virology, and the ability to stimulate and motivate professional as well as subordinate personnel. Our laboratories, located in suburban Washington, D.C., offer well-equipped research facilities and an outstanding benefits program including retirement, stock savings, and dental care plans. Please send résumé to Michael J. Mackert, Assistant Personnel Manager, HAZLETON LABORATORIES, INC., a Subsidiary of TRW Inc., P. O. Box 30, Falls Church, Virginia 22046.

An Equal Opportunity Employer

MECHANICAL-OPTICAL ENGINEER

Medical subsidiary, of large corporation, wishes immediately. Senior Product Development Engineer. Immediate project is cooperation in the development of a new type of automated absorption spectrophotometer. Prospect would be in line for group leadership in a very progressive company with excellent prospects and benefits. Salary negotiable. Location suburban area of large Midwest city. All inquiries will be answered.

BOX 233, SCIENCE

GRADUATE STUDY

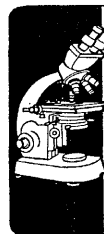
RESEARCH ASSOCIATE/POSTDOCTORAL. Studies on protein biosynthesis of peptide hormones, hormonal control mechanisms and intermediary metabolism of bone. Government laboratory. Possible conversion to permanent staff for suitable individual. State qualifications, research interest, references, salary requirements. Inquiries should be sent to: Calcium Research Laboratory, VA Hospital, Kansas City, Missouri 64128.

The Market Place

BOOKS • SERVICES • SUPPLIES • EQUIPMENT

AUTHORS WANTED BY NEW YORK PUBLISHER

Your book can be published, promoted, distributed by a reliable company on a subsidized basis. Fiction, non-fiction, poetry, scholarly, scientific and even controversial manuscripts welcomed. For free booklet, write: Vantage Press, Dept. SC, 120 W. 31 St., New York 10001.



Histology Service, Inc.

Servicing Pharmaceutical Industry. Toxicologists and Research Projects. Emergency Service for peak load periods. Serial Sections—Special stains. Full Range of Histology Studies and Chemical Analyses.

HISTOLOGY SERVICE, Inc.

6190 Rising Sun Avenue
Phila., Pa. 19111 (215) RA 5-5103

CUSTOM DESIGN AND MANUFACTURE

Liquid metering controls, gas-tight stirring seals, high capacity, portable low-temperature baths, low-temperature high vacuum solvent stripping systems, pilot plant design.

Tekton Development Company
1325 Egbert Avenue
San Francisco, California 94124
415-822-3666

NATIONAL BUREAU OF STANDARDS WWV

TIME SIGNALS RECEIVED 24 HOURS A

DAY. VOICE & TIME TICKS. Oscilloscope

connection. SIMEX TIME STANDARD, developed by Coast Navigation School. Please write

for catalog, Dept. 5734, 418 E. Canon Perdido,

Santa Barbara, CA 93101.

MINIPIGS

(Miniature Swine)

Vita Vet Laboratories
Marion, Indiana 46952

Phone 317—664-0013
Forest E. Conder

What's in back of a SORVALL?



Precision engineering, experienced design, everything big-company "know-how" with small-company dedication can pack into a precision-built, durable, reliable centrifuge. That's what we put "in back" of every SORVALL. That is why the RC-2, and now the RC2-B, are successors only — not meaningless innovations to the original, manually-operated RC-1. (The original was so good, it still gives us a bad time when we try to replace it with the vastly improved RC2-B.) "Look in back" of a SORVALL — the RC2-B Automatic Superspeed Refrigerated Centrifuge — to 20,000 rpm — to 49,500 x g. We assure you, it's not just all front. For all the details, write to Ivan Sorvall, Inc., Norwalk, Connecticut 06856.

SORVALL®
RESEARCH INSTRUMENTS — BUY SORVALL



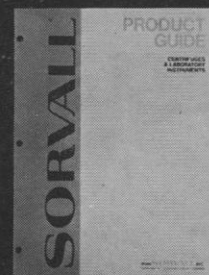
**SS-3 AUTOMATIC
SUPERSPEED CENTRIFUGE**
RCF's to 34,800 x g • Speeds to 17,000 rpm • The most advanced table-top centrifuge available; with Gyro-Action Drive!



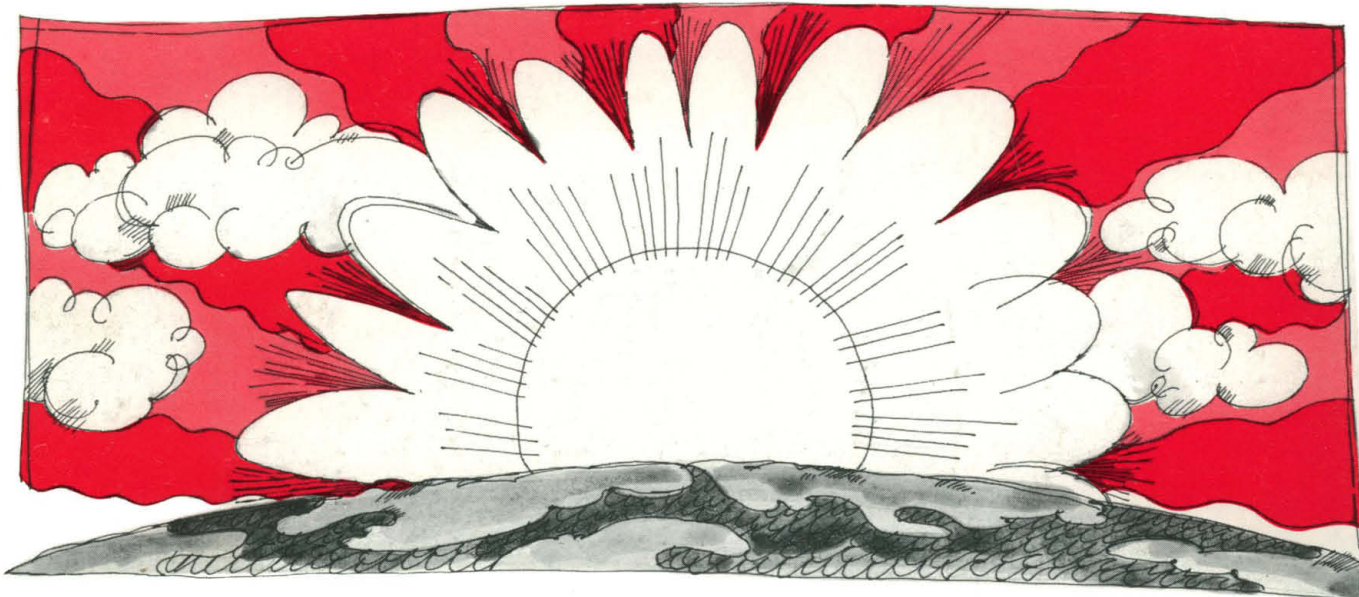
**SS-4 MANUAL
SUPERSPEED CENTRIFUGE**
RCF's to 34,800 x g • Speeds to 17,000 rpm • The modern manually-controlled centrifuge; with Gyro-Action Drive!



**SS-1 SUPERSPEED
ANGLE CENTRIFUGE**
RCF's to 31,000 x g • Speeds to 16,000 rpm • The original "work-horse" of the modern laboratory!



PRODUCT GUIDE
Comprehensive brochure details specifications for all SORVALL Centrifuges and Instruments.



Sure as sunrise.

TWO TRUTHS ABOUT
OUR LIQUID SCINTILLATION SYSTEMS:
THEY'RE ULTRA-RELIABLE BY DESIGN.
AND WE SEE TO IT
THAT THEY STAY THAT WAY.

To illustrate, consider our multi-user-oriented Mark II™ for high-performance, cooled, 300-sample counting. And our all-new Unilux® IIA—the ultimate 100-sample bench-top system with higher E^2/B than ever.

Reliability for both begins with integrated circuits which eliminate the trouble spots inherent in wired-and-soldered circuits.

Next, the sample-changing mechanism—all too often the culprit in breakdowns. Not so in our systems, with foolproof sample conveyor and anti-jam sample elevator that automatically rejects oversize samples.

Further, cooled counting—to be fully appreciated—depends on a stable counting environment. Created, in the Mark II and Unilux IIA, by a chamber held precisely at the optimum temperature that you select and isolated from all heat sources.

From such built-in reliability comes full utilization of system performance. Such as the Mark II's figure of merit that permits counting at activities lower than any other system (plus accommodation for 12 separate counting programs—and more). And such as the Mark II's improved efficiency (60% for 3H and E^2/B of better than 175 in the same channel).

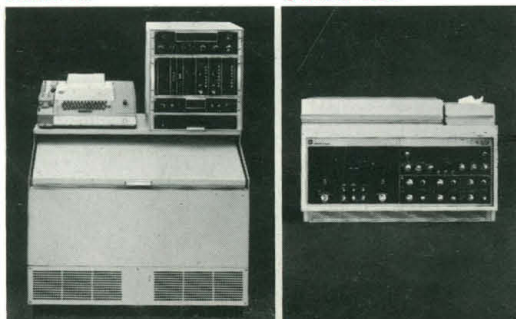
This sort of reliable performance is our standard. The rare service problem is promptly brought under control by our nationwide network of service personnel. Trained to know the system. To get to the heart of any problem. To realize that every minute of down-time is, for you, one minute too many.

Reliability. Built-in. Watched-over. The reasons to learn more about the Mark II and the Unilux IIA. Call your Nuclear-Chicago sales engineer. Or write to us. 0-220

Circle No. 45 on Readers' Service Card

Mark II

Unilux IIA



NUCLEAR-CHICAGO

A SUBSIDIARY OF G. D. SEARLE & CO.

2000 Nuclear Drive, Des Plaines, Illinois 60018, U.S.A.
Donker Curtiusstraat 7, Amsterdam W. The Netherlands

ALS-273