

National Meetings

September

8-10. **Agriculture Meteorology Conf.**, 9th, Seattle, Wash. (R. J. Hanks, Dept. of Soils and Meteorology, Utah State Univ., Logan 84321)

8-10. **Metallurgy and Materials Science**, intern. conf., Philadelphia, Pa. (G. R. Belton, School of Metallurgy and Materials Sciences, Univ. of Pennsylvania, Philadelphia 19104)

8-10. **Standards Engineers Soc.**, 18th annual, Washington, D.C. (J. M. Ward, 11208 Long Pine Trail, Potomac, Md. 20857)

8-12. **Dietetics**, 5th intern. congr. (American Dietetic Assoc., 52nd annual), Washington, D.C. (Public Relations, The Association, 620 N. Michigan Ave., Chicago, Ill. 60611)

8-12. **American Soc. of Limnology and Oceanography**, La Jolla, Calif. (G. H. Lauff, W. K. Kellogg Biological Station, Michigan State Univ., Hickory Corners 49060)

8-13. **High Energy Physics and Nuclear Structure**, intern. conf., New York, N.Y. (S. Devons, Dept. of Physics, Columbia Univ., New York 10027)

9-10. **Society of Logistics Engineers**, 4th annual, Cape Canaveral, Fla. (G. Dill, Aerospace Services Div., Pan American World Airways, Inc., Patrick AFB, Fla. 32925)

11-12. **Symposium on Sulphur in Nutrition**, Corvallis, Ore. (J. E. Oldfield, Dept. of Animal Science, Oregon State Univ., Corvallis 77331)

14-17. **Association of Medical Illustrators**, Washington, D.C. (B. J. Melloni, AMI, Georgetown Univ., Washington, D.C. 20007)

14-20. **College of American Pathologists and American Soc. of Clinical Pathologists**, joint annual mtg., Chicago, Ill. (O. Neibel, CAP, 230 N. Michigan Ave., Chicago 60601)

17-19. **American Science Film Assoc.**, Washington, D.C. (B. J. Melloni, ASFA, Georgetown Univ., Washington, D.C. 20007)

17-19. **Blood and Tissue Antigens**, intern. symp., Ann Arbor, Mich. (D. Aminoff, Simpson Memorial Inst., Univ. of Michigan, Ann Arbor 48104)

17-19. **Industrial Research**, 5th natl. conf., Chicago, Ill. (V. J. Danilov, Industrial Research Bldg., Beverly Shores, Ind. 46301)

18-20. **Chemical Marketing Research Assoc.**, Lake Placid, N.Y. (P. E. Levesque, FMC Corp., 633 Third Ave., New York 10017)

21-24. **American Assoc. of Medical Clinics**, New York, N.Y. (E. M. Wurzel, Executive Director, The Association, 421 King St., Alexandria, Va. 22314)

21-24. **Petroleum Mechanical Engineering Conf.**, Tulsa, Okla. (H. E. Broadbent, Atlantic Richfield Co., P.O. Box 8138, Philadelphia, Pa. 19101)

21-25. **Comparative Leukemia Research**, 4th intern. symp., Cherry Hill, N.J. (R. M. Dutcher, School of Veterinary Medicine, Univ. of Pennsylvania, New Bolton Center, Kennett Square 19348)

22-24. **National Conf. on Packaging**

8 AUGUST 1969

We've multiplied. By adding.

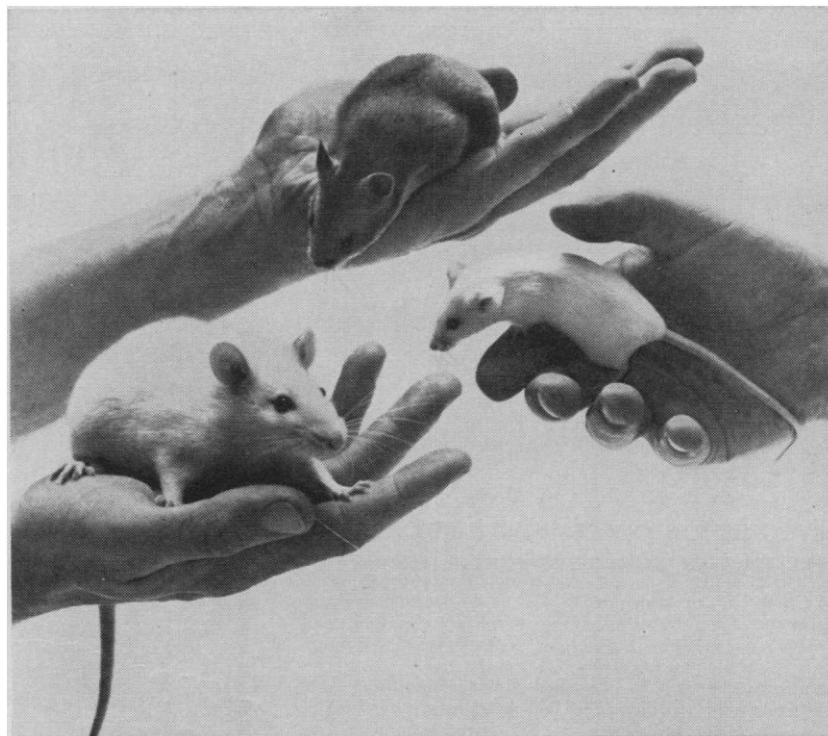
Our additions will help us help you. Because at Charles River in Wilmington, our new facilities help us deliver an extra 300,000 rats a year. Plus 300,000 more mice.

And at our expanded facilities in Elbeuf, France, we've increased the production potential for both animals by 50%.

We've even added a whole new subsidiary, the Lakeview Hamster Colony, Newfield, New Jersey. And they're planning a 25% increase in lab-quality hamsters this year.

It all adds up to fast, dependable delivery of COBS®, germfree or associated animals. When you need them. And where.

Why not capitalize on our growth story? Charles River Breeding Laboratories, Inc., Wilmington, Mass., or Charles River, Elbeuf, France.



Order a litter. Or a lot.

Charles River 
BREEDING LABORATORIES, INC. FROM THE HAND OF THE VETERINARIAN TO RESEARCH

Circle No. 28 on Readers' Service Card

Wastes, San Francisco, Calif. (M. Li, Food Protection and Toxicology Center, Univ. of California, Davis 95616)

22-26. **Combustion-Generated Air Pollution**, Berkeley, Calif. (Continuing Education in Engineering, University Extension, Univ. of California, Berkeley 94720)

22-26. **International Simulation and Training Conf.**, Montreal, Canada. (W. I. Marble, SAE Hq., Meetings Manager, 2 Pennsylvania Plaza, New York 10001)

23-25. **Physics and Nondestructive Testing**, 9th annual, Chicago, Ill. (W. J. McGonnagle, Symp. Coordinator, P.O. Box 554, Elmhurst, Ill. 60126)

24-26. **IEEE Ultrasonics Symp.**, St. Louis, Mo. (D. I. Bolef, Inst. of Electrical and Electronics Engineers, Ultrasonics Symp., Dept. of Physics, Washington Univ., St. Louis 63130)

26-3. **American Acad. of General Practice**, Philadelphia, Pa. (M. F. Cahal, The Academy, Volker Blvd. at Brookside, Kansas City, Mo. 64112)

28-1. **Society of Petroleum Engineers of AIME**, 44th annual, Denver, Colo. (J. R. Dempsey, Northern Natural Gas Co., P.O. Box 308, Omaha, Neb. 68102)

29-1. **International Conf. on Bioelectrical Impedance**, New York, N.Y. (S. E. Marovich, The Conference, 1150 NW 14th St., Miami, Fla. 33136)

29-3. **American Soc. of Photogrammetry**, Portland, Ore. (L. P. Jacobs, 105 N. Virginia Ave., Falls Church, Va. 22046)

30-2. **Analytical Chemistry in Nuclear Technology**, 13th Conf., Gatlinburg, Tenn. (L. J. Brady, Oak Ridge National Lab., P.O. Box X, Oak Ridge, Tenn. 37830)

October

1-5. **American Soc. for Information Science**, San Francisco, Calif. (J. E. Bryan, ASIS, 2011 Eye St., NW, Washington, D.C. 20006)

2-5. **American Soc. of Human Genetics**, San Francisco, Calif. (C. J. Witkop, Jr., 429 Owre Hall, Univ. of Minnesota, Minneapolis 55455)

2-9. **Use of Computers in Clinical Medicine**, 2nd symp., Buffalo, N.Y. (H. J. Alvis, Associate Dean, Continuing Medical Education, 2211 Main St., Buffalo, 14214)

5-9. **Electrochemical Soc.**, Detroit, Mich. (E. G. Enck, The Society, 30 E. 42 St., New York 10017)

5-9. **Prestressed Concrete Inst.**, Boston, Mass. (W. B. Bennett, Jr., PCI, 205 W. Wacker Dr., Chicago, Ill. 60606)

5-10. **Water Pollution Control Federation**, 42nd annual, Dallas, Tex. (R. E. Fuhrman, WPCF, 3900 Wisconsin Ave., NW, Washington, D.C. 20016)

6-10. **Research Equipment Exhibit and Instrument Symp.**, 19th annual, Bethesda, Md. (J. B. Davis, Chief, Supply Management Bureau, National Institutes of Health, Bldg. 12A, Room 4003, Bethesda 20014)

7-8. **Conference on Automation in Injection Molding**, Cincinnati, Ohio. (R. P. Fox, Soc. of Plastics Engineers, 656 W. Putnam Ave., Greenwich, Conn. 06830)

7-8. **Symposium on Recent Progress in Diabetes and Insulin Research**, Omaha, Neb. (M. A. Mehlman, Dept. of Biochemistry, Univ. of Nebraska, College of Medicine, Omaha 68105)

7-9. **Conference on Environmental Effects on Aircraft and Propulsion Systems**, Bordentown, N.J. (R. A. Bard, Naval Air Propulsion Test Center, P.O. Box 176, 1440 Parkway Ave., Trenton, N.J. 08628)

8-9. **Society for Management Information Systems**, Minneapolis, Minn. (G. W. Dickson, Management Information System Research Center, School of Business Administration, Univ. of Minnesota, Minneapolis 55455)

8-10. **American Council on Education**, 52nd annual, Washington, D.C. (F. Skinner, Information Officer, ACE, 1785 Massachusetts Ave., NW, Washington, D.C. 20036)

8-11. **National Assoc. of Biology Teachers**, Philadelphia, Pa. (J. R. Lightner, NABT, 1420 N St., NW, Washington, D.C. 20005)

12-16. **American Soc. of Plastic and Reconstructive Surgeons**, St. Louis, Mo. (P. Randall, The Society, 18 Laughlin Lane, Philadelphia, Pa. 19118)

13-14. **Psychological Aspects of Perception**, New York, N.Y. (E. Harms, 158 E. 95 St., New York 10028)

13-16. **Association of Official Analytical Chemists**, Washington, D.C. (L.G. Ensinger, Box 540, Benjamin Franklin Station, Washington, D.C. 20044)

13-17. **American Assoc. for Laboratory Animal Science**, 20th annual, Dallas, Tex. (J. J. Garvey, The Association, Box 10, Joliet, Ill. 60434)

14-16. **Remote Sensing of Environment Symp.**, Ann Arbor, Mich. (Univ. of Michigan, Extension Service, Conf. Dept., 412 Maynard St., Ann Arbor 48103)



REVCO ULTRA-LOW TEMPERATURE CABINETS
FOR RESEARCH, STORAGE, SEASONING, TESTING

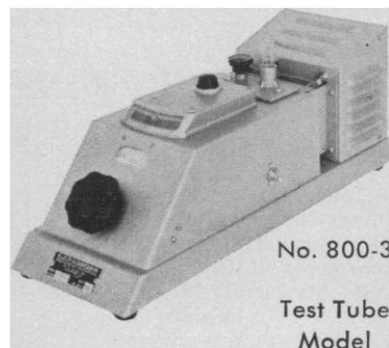
REVCO ULT cabinets are in use in all leading medical schools and universities, research centers and industrial complexes. Precision accuracy control. Low amperage draw. Chest models from 1½ cu. ft. to 24 cu. ft. — Uprights 10 cu. ft. Compact 24" refrigerators and freezers also available. Let us recommend specific ULT equipment for you. Write for FREE Fact File to:

REVCO, INC.
Scientific & Industrial Division
1100 Memorial Dr.
West Columbia, South Carolina 29169

REVCO
LEADER IN ULTRA-LOW TEMPERATURE SINCE 1938

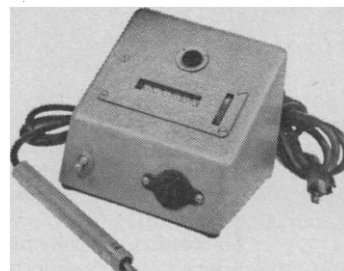
Circle No. 102 on Readers' Service Card

Klett Summerson Photoelectric Colorimeter



KLETT COLONY MARKER and TALLY

This instrument takes the drudgery and error out of the counting of bacterial colonies.



Klett MANUFACTURING CO., INC.,
179 East 87th Street, New York, 28, N.Y.

Circle No. 101 on Readers' Service Card

Speed separation and dialysis of dilute macro- molecular solutions



Advanced ultrafiltration systems — with DIAFLO® membranes that retain molecules at levels from 500 to 100,000 MW — can save you hundreds of laboratory hours. Produce up to 1000-fold concentrations of dilute protein solutions without denaturation. Partition complex mixtures or dialyze efficiently and fast even at low salt concentration.

Modular units or self-contained systems. Accessories for automated use. Send for Applications Guide!

amicon

Scientific Systems Div., Dept. C-39
AMICON CORPORATION
21 Hartwell Ave., Lexington, Mass. 02173
Please send Free Applications Guide.

Name _____
Institution _____
Department _____
Street _____
City _____
State _____ Zip Code _____

Circle No. 82 on Readers' Service Card

14-17. Society for Experimental Stress Analysis, Houston, Tex. (B. E. Rossi, SESA, 21 Bridge Sq., Westport, Conn. 06880)

14-22. Pan-Pacific Surgical Assoc., 11th Congr., Honolulu, Hawaii. (H. DeVault, Room 236, Alexander Young Bldg., Honolulu 96813)

16-17. Association of Earth Science Editors, 3rd annual conf., Houston, Tex. (W. D. Rose, Kentucky Geological Survey, Univ. of Kentucky, Lexington 40506)

16-17. National Conf. on Fluid Power, Chicago, Ill. (W. R. Smith, NCFP, 3300 S. Federal St., Chicago 60616)

16-17. Rapid Excavation, 2nd symp., Sacramento, Calif. (H. L. Hartman, Dean of Engineering, Sacramento State College, Sacramento 95819)

17-19. Society for Social Responsibility in Science, New Haven, Conn. (H. Bloom, SSRS, 221 Rock Hill Rd., Bala-Cynwyd, Pa. 19004)

18-23. American Acad. of Pediatrics, Chicago, Ill. (G. E. Hughes, Secretary for Education Affairs, 1801 Hinman Ave., Evanston, Ill. 60204)

19-22. American Mining Congr., San Francisco, Calif. (R. W. Van Evera, Ring Bldg., Washington, D.C. 20036)

19-25. American College of Gastroenterology, 34th annual, Houston, Tex. (D. Weiss, Executive Director, ACG, 33 W. 60 St., New York 10023)

20-21. Polymer-Modified Hydraulic Cements Symp., Philadelphia, Pa. (H. B. Wagner, Dept. of Chemistry, Drexel Inst. of Technology, Philadelphia 19104)

20-22. George H. Hudson Symp., 5th annual, Plattsburgh, N.Y. (G. F. Kokoszka, Dept. of Chemistry, State Univ. College, Plattsburgh 12901)

20-22. American Assoc. of Stratigraphic Palynologists, University Park, Pa. (A. Traverse, Dept. of Geology and Geophysics, Pennsylvania State Univ., University Park 16802)

21-24. Optical Soc. of America, 54th annual, Chicago, Ill. (M. E. Warga, The Society, 2100 Pennsylvania Ave., NW, Washington, D.C. 20037)

21-25. Association of Engineering Geologists, 12th annual, San Francisco, Calif. (P. Vardy, AEG, P.O. Box 985, San Francisco 94101)

23-25. American Astronautical Soc., Las Cruces, N.M. (J. Penwarden, News Service, New Mexico State Univ., Las Cruces)

24-26. Orton Soc., 20th annual, New York, N.Y. (V. A. Graff, The Society, 15 Claremont Ave., New York 10027)

25-29. American Soc. of Anesthesiologists, San Francisco, Calif. (W. S. Marinko, 515 Busse Highway, Park Ridge, Ill. 60608)

25-31. American Assoc. of Medical Record Librarians, New York, N.Y. (M. Waterstraat, The Association, 211 E. Chicago Ave., Chicago, Ill. 60611)

26-30. Society for Industrial and Applied Mathematics, Anaheim, Calif. (R. K. Windsor, 33 S. 17 St., Philadelphia, Pa. 19103)

27-29. Interscience Conf. on Antimicrobial Agents and Chemotherapy, 9th, Washington, D.C. (R. W. Sarber, American Soc. for Microbiology, 1913 I St., NW, Washington, D.C. 20006)

IMPROVED GLASSWARE WASHING

PLUS
Plasticware Cycle

Top Wash And
Rinse Spray System

Booster Heater

NEW SERIES CRC LABWASHER®

MODELS NOW AVAILABLE

Our new line of labwashers will end your labware washing problems. Their fully automatic washing cycles produce spotlessly clean and dry labware, including plasticware, quickly and efficiently.

They cut glass labware breakage in half, and soon pay for themselves in man-hours saved.

- Choice of undercounter, free-standing or mobile models
- Two-minute installation on our Mobile model
- Choice of tap or distilled water rinses (up to 3)
- Dual-Temp Forced-Air Drying
- Booster heater for elevating and maintaining high water temperatures
- Convenient front loading with roll-out racks
- 15 stainless steel accessory racks handle glass labware or plasticware.

For BULLETIN A-98 describing all models and accessories, plus 52-page "In-Field Applications Report" write to: A-98



4164-B



THE CHEMICAL RUBBER CO.

18901 Cranwood Parkway
Cleveland, Ohio 44128

Circle No. 83 on Readers' Service Card