

Thus, quantitative carcinogenic potency is a relative term valid in a controlled experimental setting.

At this symposium important conceptual and practical advances were reported. Theoretical and experimental approaches have led to a consensus that many different types of chemical carcinogens may be considered as electrophilic reagents, produced by synthesis or by biochemical activation. New experimental developments should help pinpoint the target specifically related to carcinogenicity. It need be a cellular or molecular entity with a preference for such electrophilic centers. Additional events in the carcinogenic process leading to tumors deal with host-specific modifying factors, concerned with the multiplication of cells altered by action of an electrophilic reagent with its receptor.

The meeting was held under the sponsorship of the Hebrew University of Jerusalem, the Foundation Edmond de Rothschild of Paris, and the Israel Academy of Sciences and Humanities.

The complete proceedings will appear as a monograph published by the Israel Academy. This first symposium dealing with carcinogenesis will be followed by others in which significant reports on broad multidisciplinary aspects of research develop into advances of an entire field.

J. H. WEISBURGER

*National Cancer Institute,  
Bethesda, Maryland 20014*

E. D. BERGMANN

*Department of Organic Chemistry,  
Hebrew University of Jerusalem,  
Jerusalem, Israel*

B. PULLMAN

*Institut de Biologie Physico-Chimique,  
13, rue Pierre Curie, Paris, France*

## National Meetings

### September

2-4. **Comparative Virology**, intern. conf., Montreal, Canada. (K. Maramorosch, Boyce Thompson Inst. for Plant Research, Yonkers, N.Y. 10701)

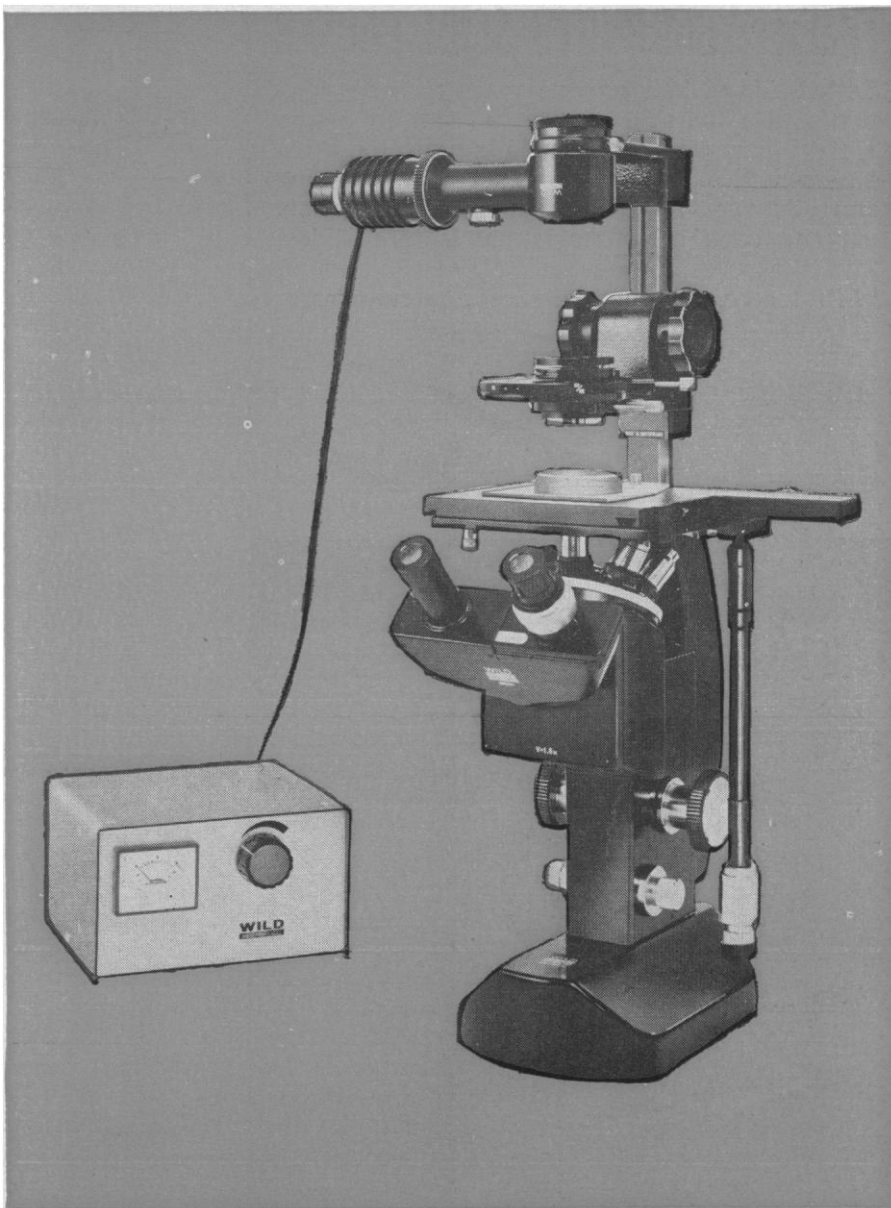
2-6. **Molecular Structure and Spectroscopy**, 24th annual symp., Columbus, Ohio. (K. N. Rao, Physics Dept., Ohio State Univ., Columbus 43210)

2-6. **Tuberculosis**, intern. conf., New York, N.Y. (J. E. Perkins, Natl. Tuberculosis Assoc., 1790 Broadway, New York 10019)

3-5. **Weather Forecasting and Analysis**, 3rd, Virginia Beach, Va. (E. C. Kindle, Navy Weather Research Facility, Bldg. R 48, Naval Air Station, Norfolk, Va.)

25 JULY 1969

## Why doesn't somebody design an inverted microscope specifically for tissue culture and other biological studies?



## Somebody has. It's the Wild M-40.

This is no modification. It's the newest, highest state-of-the-art in inverted microscope design and construction. In mechanical precision. In optical quality. And in conveniences, operating speed and ease. It's the first of its kind, a typical Wild classic. Write for Booklet M-40.

**WILD®**  
**HEERBRUGG**

**WILD HEERBRUGG INSTRUMENTS, INC.**  
**FARMINGDALE, NEW YORK 11735**

Full In Canada: Wild of Canada Ltd.  
Factory Services 881 Lady Ellen Place, Ottawa 3, Ontario

Circle No. 27 on Readers' Service Card

421

3-6. Conference on **Biogenic Amines as Physiological Regulators**, Woods Hole, Mass. (B. A. Curtis, Tufts Univ. School of Medicine, 136 Harrison Ave., Boston, Mass. 02111)

3-6. American **Political Science Assoc.**, New York, N.Y. (E. M. Kirkpatrick, APSA, 1527 New Hampshire Ave., NW, Washington, D.C. 20036)

4-6. American Assoc. of **Obstetricians and Gynecologists**, Hot Springs, Va. (R. B. Wilson, 200 First St., SW, Rochester, Minn. 55901)

4-6. **Parapsychological Assoc.**, 12th intern. conv., New York, N.Y. (J. G. Pratt, Box 152, Univ. of Virginia Medical School, Charlottesville 22901)

5-7. Society for the Study of **Amphibians and Reptiles**, 12th annual, Carbondale, Ill. (J. T. Collins, Museum of Natural History, Univ. of Kansas, Lawrence 66044)

7-12. American **Chemical Soc.**, 158th natl., New York, N.Y. (Manager, Natl. Meeting and Divisional Activities, 1155 16th St., NW, Washington, D.C. 20036)

7-12. **Experimental Medicine and Surgery in Primates**, 2nd conf., New York, N.Y. (J. Moor-Jankowski, New York Univ. Medical Center, 550 First Ave., New York 10016)

8-9. Symposium on **Turbulence Measurements in Liquids**, Rolla, Mo. (G. K. Patterson, Dept. of Chemical Engineering, Univ. of Missouri, Rolla 65401)

8-10. **Agriculture Meteorology Conf.**, 9th, Seattle, Wash. (R. J. Hanks, Dept. of Soils and Meteorology, Utah State Univ., Logan 84321)

8-10. **Metallurgy and Materials Science**, intern. conf., Philadelphia, Pa. (G. R. Belton, School of Metallurgy and Materials Sciences, Univ. of Pennsylvania, Philadelphia 19104)

8-10. **Standards Engineers Soc.**, 18th annual, Washington, D.C. (J. M. Ward, 11208 Long Pine Trail, Potomac, Md. 20857)

8-11. **Electrical Insulation Conf.**, 9th, Boston, Mass. (H. P. Walker, Code 6158D, Naval Ship Engineering Center, Washington, D.C. 20360)

8-12. **Dietetics**, 5th intern. congr. (American Dietetic Assoc., 52nd annual), Washington, D.C. (Public Relations, The Association, 620 N. Michigan Ave., Chicago, Ill. 60611)

8-12. American Soc. of **Limnology and Oceanography**, La Jolla, Calif. (G. H. Lauff, W. K. Kellogg Biological Station, Michigan State Univ., Hickory Corners, 49060).

8-13. **High Energy Physics and Nuclear Structure**, intern. conf., New York, N.Y. (S. Devons, Dept. of Physics, Columbia Univ., New York 10027)

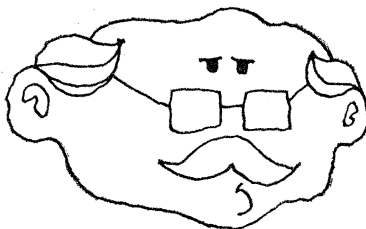
9-10. Society of **Logistics Engineers**, 4th annual, Cape Canaveral, Fla. (G. Dill, Aerospace Services Div., Pan American World Airways, Inc., Patrick AFB, Fla. 32925)

11-12. Symposium on **Sulphur in Nutrition**, Corvallis, Ore. (J. E. Oldfield, Dept. of Animal Science, Oregon State Univ., Corvallis 77331)

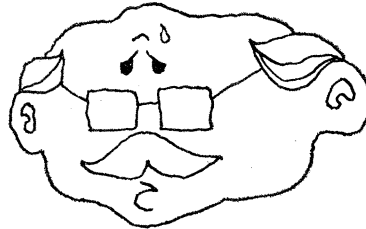
14-17. Association of **Medical Illustrators**, Washington, D.C. (B. J. Melloni, AMI, Georgetown Univ., Washington, D.C. 20007)

14-20. College of American **Pathol-**

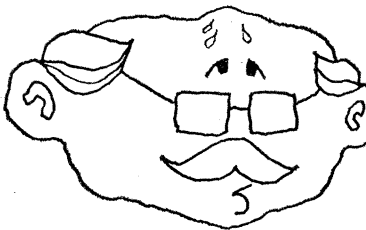
**NO SIR.  
THERE'S NOTHING  
SIMPLE ABOUT RUNNING  
THIS LAB.**



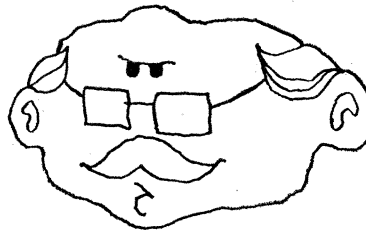
**IT'S  
DECISIONS,  
DECISIONS,  
DECISIONS.**



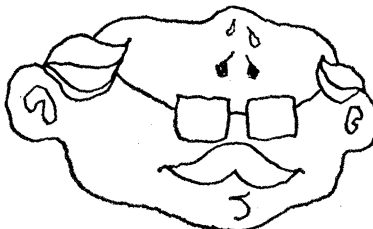
**WHAT TESTS  
TO RUN WHEN.  
WHO GETS  
PAY RAISES.**



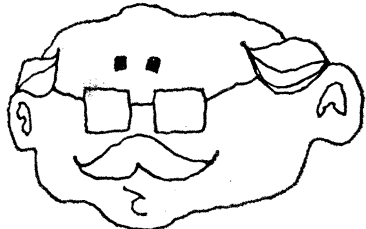
**SOMETIMES  
I EVEN HAVE TO  
ARBITRATE  
COFFEE BREAKS.**



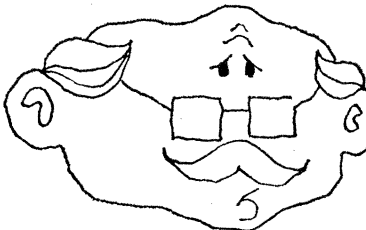
**AND THE  
PURCHASING DECISIONS!  
WHAT'S GOOD?  
WHAT'S BAD?**



**BUT GLASSWARE IS EASY.  
PYREX. ONLY CORNING  
MAKES PYREX LABWARE.  
NO DECISION THERE.**



**DO YOU  
KNOW MY SON,  
THE PYREX®  
SALESMAN?**



No matter whether you know the salesman or not, you can know that every PYREX brand flask, beaker, bottle, dish, condenser, pipet, buret, cylinder is made by Corning. That's comforting, isn't it? Available in quality and quantity from your Corning dealer.

**CORNING**  
LABORATORY PRODUCTS

Makers of PYREX® Labware

Circle No. 26 on Readers' Service Card



For 1969-70...

## New Worthington catalog lists enzymes for research

Our newly published catalog lists more than 230 high purity enzymes and related biochemicals for research. Several are produced through the use of such advanced techniques as column chromatography, disc gel and free-flow electrophoresis.

The catalog provides essential information on enzyme source, activity, purity, assay, packaging, and price for each biochemical. Also listed is a group of enzymatic reagents for clinical diagnosis.

At Worthington we insist on preparing all our own enzyme products, carrying them from raw material through processing, purification, and packaging. With complete control over each step, we can give important guarantees of enzyme quality. Other suppliers—re-sale houses offering something made by somebody else—can't do it.

Use the attached coupon to request your copy of Worthington Enzymes for Research or other Worthington literature.

Canadian distributor: Winley-Morris Co., Ltd., Montreal.



Worthington Biochemical Corporation  
Freehold, New Jersey 07728

Please send the following:

- ☐ Worthington Enzymes for Research
- ☐ Worthington Enzyme Reagents for Clinical Diagnosis
- ☐ I am a new customer. Send the complete Worthington Enzyme Manual.

Name \_\_\_\_\_

Title \_\_\_\_\_

Organization \_\_\_\_\_

Address \_\_\_\_\_

City \_\_\_\_\_

State \_\_\_\_\_

Zip \_\_\_\_\_

Circle No. 87 on Readers' Service Card

ogists and American Soc. of Clinical Pathologists, joint annual mtg., Chicago, Ill. (O. Neibel, CAP, 230 N. Michigan Ave., Chicago 60601)

15-17. Woodhandling, 2nd symp., Ottawa, Ont., Canada. (Technical Section, Canadian Pulp and Paper Assoc., 2280 Sun Life Bldg., Montreal 110, P.Q.)

17-19. American Science Film Assoc., Washington, D.C. (B. J. Melloni, ASFA, Georgetown Univ., Washington, D.C. 20007)

17-19. Blood and Tissue Antigens, intern. symp., Ann Arbor, Mich. (D. Aminoff, Simpson Memorial Inst., Univ. of Michigan, Ann Arbor 48104)

17-19. Industrial Research, 5th natl. conf., Chicago, Ill. (V. J. Danilov, Industrial Research Bldg., Beverly Shores, Ind. 46301)

18-20. Chemical Marketing Research Assoc., Lake Placid, N.Y. (P. E. Levesque, FMC Corp., 633 Third Ave., New York 10017)

18-20. Symposium on Coniferous Forests of the Northern Rocky Mountains, Missoula, Mont. (Center for Natural Resources, Univ. of Montana, Missoula 59801)

21-24. American Assoc. of Medical Clinics, New York, N.Y. (E. M. Wurzel, Executive Director, The Association, 421 King St., Alexandria, Va. 22314)

21-24. Petroleum Mechanical Engineering Conf., Tulsa, Okla. (H. E. Broadbent, Atlantic Richfield Co., P.O. Box 8138, Philadelphia, Pa. 19101)

21-25. Comparative Leukemia Research, 4th intern. symp., Cherry Hill, N.J. (R. M. Dutcher, School of Veterinary Medicine, Univ. of Pennsylvania, New Bolton Center, Kennett Square 19348)

22-24. National Conf. on Packaging Wastes, San Francisco, Calif. (M. Li, Food Protection and Toxicology Center, Univ. of California, Davis 95616)

22-26. Combustion-Generated Air Pollution, Berkeley, Calif. (Continuing Education in Engineering, University Extension, Univ. of California, Berkeley 94720)

22-26. International Simulation and Training Conf., Montreal, Canada. (W. I. Marble, SAE Hq., Meetings Manager, 2 Pennsylvania Plaza, New York 10001)

23-25. Physics and Nondestructive Testing, 9th annual, Chicago, Ill. (W. J. McGonnagle, Symp. Coordinator, P.O. Box 554, Elmhurst, Ill. 60126)

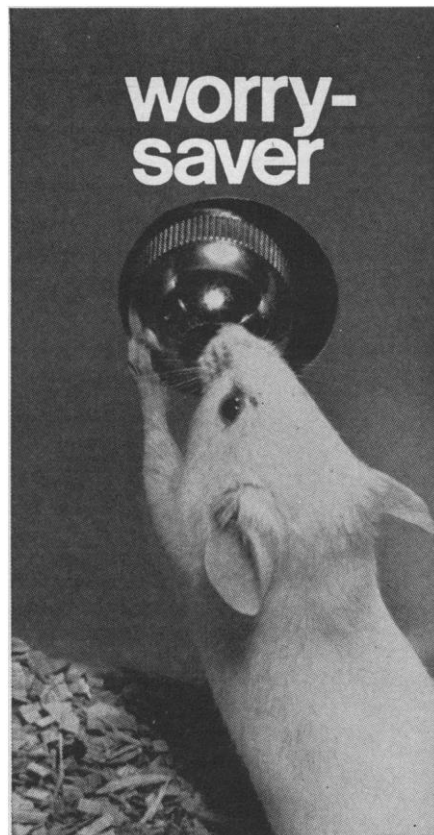
24-26. IEEE Ultrasonics Symp., St. Louis, Mo. (D. I. Bolef, Inst. of Electrical and Electronics Engineers, Ultrasonics Symp., Dept. of Physics, Washington Univ., St. Louis 63130)

26-3. American Acad. of General Practice, Philadelphia, Pa. (M. F. Cahal, The Academy, Volker Blvd. at Brookside, Kansas City, Mo. 64112)

28-1. Society of Petroleum Engineers of AIME, 44th annual, Denver, Colo. (J. R. Dempsey, Northern Natural Gas Co., P.O. Box 308, Omaha, Neb. 68102)

29-1. International Conf. on Bioelectrical Impedance, New York, N.Y. (S. E. Marovich, The Conference, 1150 NW 14th St., Miami, Fla. 33136)

29-3. American Soc. of Photogrammetry, Portland, Ore. (L. P. Jacobs, 105 N. Virginia Ave., Falls Church, Va. 22046)



## CAREMATIC™ ANIMAL WATERING SYSTEM

Reliability is just one of the important benefits designed into each Carematic Automatic Animal Watering System. It shows, for example, in the flow-through design and the long-lasting materials used in its unique, self-cleaning drinker valve. It shows in the simplicity and ease of operation made possible by the system's float-regulated water tank—reducing line pressure to a flow which can be handled by the smallest animal. You'll find a Carematic System can be a real worry-saver for you. Send today for details.

### NOW... a reliable drinker valve

Precision engineered, and produced under rigid specifications, this remarkable valve operates on the diaphragm principle and makes all others appear obsolete. After proper installation, reliable performance is assured by the Teflon valve seat which provides a positive water seal and is resistant to build-up of deposits from material common in most water.

U.S. PAT. D-212,822 OTHER PATENTS PENDING



CAREMATIC SYSTEMS CA-29C  
The Upjohn Company, Kalamazoo, Michigan 49001

Circle No. 76 on Readers' Service Card