

# STOP *throwing away counting vials contaminated by radioactivity!*

## NEW BUCHLER REFLUXO-WASHER MAKES CONTAMINATED VESSELS REUSABLE

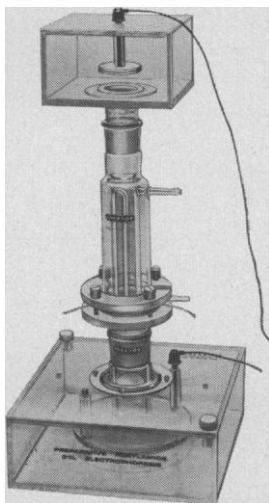
A busy laboratory can recover the cost of the stainless steel Refluxo-Washer in just a few months! One liter of solvent, which can be used several times will decontaminate 140 vials in just 90 minutes. The Refluxo-Washer is 18" high x 17" diameter and is equipped with stainless steel baskets, immersion heater, cooling coils and a drain valve for removing contaminated solvents.

Request Buchler Bulletin No. S2-3100



Circle No. 97 on Readers' Service Card

## FAST • VERSATILE • SENSITIVE



### Polyacrylamide Gel Electrophoresis Equipment

Shandon Preparative Unit is designed into a highly efficient, yet easy to use apparatus that gives optimum results with a minimum of trouble. The several components are easily assembled to facilitate set-up, and are dismantled just as quickly for cleaning. Wherever possible, clear acrylic plastic has been used in place of fragile glass to reduce breakage to a minimum. An Analytical Unit is also available. The Transverse Destainer clears dye from polyacrylamide gels in 10 to 15 minutes. Send for catalog detailing this outstanding equipment to Shandon Scientific Company, Inc., 515 Broad Street, Sewickley, Pa. 15143 (Pittsburgh District).



PITTSBURGH • LONDON • FRANKFURT

Circle No. 36 on Readers' Service Card

should meet at approximately 2- or 3-year intervals. This small but vigorous conference has, without doubt, stimulated many to change their studies in various ways to make them more productive. The full text of the papers and discussions is available from the Clearinghouse for Federal Scientific and Technical Information, Springfield, Virginia 22151.

K. BECKER  
J. A. AUXIER

*Health Physics Division,  
Oak Ridge National Laboratory,  
Oak Ridge, Tennessee*

## Calendar of Events

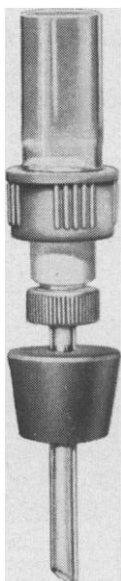
### Courses

**Fluid Mechanics**, Urbana, Ill., 11-15 August. It will cover fundamental aspects of fluid mechanics and the principal applications to the paper industry. (H. O. Teeple, Technical Association of the Pulp and Paper Industry, 360 Lexington Ave., New York 10017)

**Trace Element Analysis**, Harwell, England, 30 June-4 July. Will emphasize nuclear techniques in trace element analysis, including neutron, charged particles and gamma-ray activation analysis, autoradiography, and mass spectrometric isotopic dilution analysis. It should appeal to chemists and metallurgists working in such fields as ferrous and non-ferrous metals, refractories, glass, plastics, and so forth. (Education Officer, Royal Institute of Chemistry, 30 Russell Square, London, W.C.1, England)

**Automatic Control Theory**, St. Louis, Mo., 11-16 August. The course will cover foundations of modern control theory, finite automata and dynamical systems, stability—operator theoretic methods, foundations of optimal control theory, differential games and minimax problems, optimal control of distributed parameter systems, linear and nonlinear filtering, stochastic optimal control, and new developments in designing large linear systems. The prerequisite mathematical level of students will be a good M.S. level of preparation; however, the lectures will be conducted in a manner suitable for stimulating even the advanced research worker. (Dr. G. L. Esterson, Box 1048, Division of Continuing Professional Education, Washington University, St. Louis 63130)

**Biology of Aging**, University of California, San Diego, at La Jolla, 22 June-11 July. Is intended for senior predoctoral and early postdoctoral students in order to interest them in research on the biology of aging. The course content will include the aging process, environment and aging, mammalian aging, cellular aging, and subcellular and molecular aging. Costs will be paid by the Adult Development and Aging Branch, National Institute of Child Health and Human Development. (Dr. Gabe Maletta, Adult



## RNA-DNA DETECTION ASSEMBLY

S&S Micro Filter Holder, GTH 25, is universally accepted as the apparatus used for RNA-DNA hybridization studies. It is for the collection of biological cells and other materials on a small surface area. Recommended for use with the plain white membrane filter, S&S B6, 0.45 micron pore size.

GTH 25 is a vertical wall-shape funnel of approximately 20 ml capacity. Base section includes fritted glass membrane support. It takes a 25 mm filter, allowing an effective filter area of 2.8 sq. cm. No. 7 neoprene stopper is included for connection to a 500 ml flask.

For additional information use coupon.



The first name in filtration  
**SCHLEICHER & SCHUELL**  
(603) 352-3810

Schleicher & Schuell, Inc. S-569  
Keene, New Hampshire 03431

Please send Bulletin 90 for information  
on Membrane Filter Techniques.

Name \_\_\_\_\_

Address \_\_\_\_\_

City \_\_\_\_\_

State \_\_\_\_\_ Zip \_\_\_\_\_

Circle No. 89 on Readers' Service Card

Development and Aging Branch, National Institute of Child Health and Human Development, National Institutes of Health, Bethesda, Md. 20014)

**X-ray Spectrometry**, Albany, N.Y., 9-13 June. Is a basic course in x-ray spectrometry covering the fundamentals of theory and experimental techniques. Is intended for those who are working or plan to work in x-ray spectrometric analysis. *Fee*: \$250. (X-ray Clinic, State University of New York at Albany, Albany)

**Thermochemistry of Gas-Metal Reactions and High-Temperature Oxidation of Metals**, Los Angeles, Calif., 23-27 June. For engineers and scientists actively engaged in the winning, processing, and use of metals, alloys, and other inorganic solids at high temperatures. Is intended to acquaint participants with principles and use of thermochemistry in high-temperature chemical processes, and with the kinetics, mechanisms, and crystal structural aspects of high-temperature oxidation of metals and alloys. *Fee*: \$275. (P.O. Box 24901, Department K, University Extension, University of California, Los Angeles 90024)

**Statistical Method in Modern Experimentation**, Cambridge, Mass., 7-18 July. The course will focus on factorial designs with each factor at two or at three levels. (Director of the Summer Session, Room E19-356, Massachusetts Institute of Technology, Cambridge, Mass. 02139)

### National Meetings

#### June

2-3. International Symp. on **Molecular Biology**, New York, N.Y. (E. G. Bassett, Research Products Div., Miles Labs., Inc., Elkhart, Ind. 46514)

2-4. **Composite Materials Symp. and Workshop**, Rolla, Mo. (C. E. MacNeil, Inst. for Composite Materials, P.O. Box 1536, Stow, Ohio)

2-6. American College of **Allergists**, Washington, D.C. (E. Bauers, Dain Tower, Minneapolis, Minn. 55402)

2-6. **PCM Telemetry Systems**, Lafayette, Ind. (P. A. Wintz, School of Electrical Engineering, Purdue Univ., Lafayette 47907)

2-6. **Relativity Conf. in the Midwest**, Cincinnati, Ohio. (L. Witten, Physics Dept., Univ. of Cincinnati, Cincinnati 45221)

3-13. International Conf. on **Arid Lands in a Changing World**, Tucson, Ariz. (Intern. Conf. on Arid Lands, % Dept. of Geochronology, Univ. of Arizona, Tucson 85721)

5-6. American **Chemical Soc.**, 3rd Great Lakes mtg., De Kalb, Ill. (3rd Great Lakes Meeting, % Dept. of Chemistry, Northern Illinois Univ., De Kalb 60115)

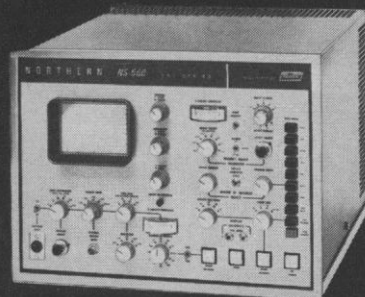
5-6. Association for **Precision Graphics**, Dallas, Tex. (W. G. Reiman, The Association, 8163 Willow Glen Rd., Hollywood, Calif. 90046)

5-11. International Assoc. of **Forensic Sciences**, 5th, Toronto, Ont., Canada. (D. M. Lucas, 8 Jarvis St., Toronto 2)

8-12. **Health Physics Soc.**, 14th, Pittsburgh, Pa. (R. F. Cowing, Executive Secretary, The Society, 194 Pilgrim Rd., Boston, Mass. 02215)

**NEW**  
from  
**NORTHERN  
SCIENTIFIC**

**NS-560**  
SIGNAL AVERAGING  
COMPUTER



■ 5" CRT Display ■ 10 Milli-volt Input Sensitivity ■ Built-in Area Integration ■ Optional Search Ramp ■ Pre- and Post-Delay Selections ■ Teletype Readin/Readout Option

512 CHANNELS **\$4,950**

1024 CHANNELS \$5,450

2048 CHANNELS \$6,150

F.O.B. MIDDLETON, WISCONSIN

The NS-560 (SAC Series) Signal Averaging Computer provides the experimenter or technician with the most versatility, accuracy and efficiency at the lowest possible cost. It is a totaling type averager with a fixed program to provide a "non-rising" baseline. The unit has several optional features which extend its use in many medical applications as well as nuclear magnetic resonant measurements.

If you have an experiment which has noise as a problem, or just digitizing analog signals, the NS-560 may solve your problem.

For full details, write today.

**NORTHERN** Subsidiary of  
SCIENTIFIC/INC. **TRACOR**  
P.O. Box 66, Middleton, Wisconsin 53562  
Phone 608/836-6511 TWX 910-280-2521

Circle No. 93 on Readers' Service Card

9. **X-ray Spectrometry Clinic**, 5th, Albany, N.Y. (H. Chessin, Dept. of Physics, State Univ. of New York, 1400 Washington Ave., Albany 12203)

9-11. **American Neurological Assoc.**, 94th, Los Angeles, Calif. (S. A. Trufant, Cincinnati General Hospital, Cincinnati, Ohio 45229)

9-13. **Propulsion**, 5th joint specialist conf., Colorado Springs, Colo. (American Inst. of Aeronautics and Astronautics, 1290 Sixth Ave., New York 10019)

10-12. **Society for Industrial and Applied Mathematics**, Washington, D.C. (R. K. Windsor, 33 S. 17 St., Philadelphia, Pa. 19103)

10-12. **Tissue Culture Assoc.**, 12th, Detroit, Mich. (R. G. Brackett, Research Labs., Parke-Davis and Co., Detroit 48232)

11-13. **Pacific Northwest Plastics Conf.**, 6th, Pullman, Wash. (R. Raff, Program Chairman, Washington State Univ., Pullman 99163)

12-13. **Symposium on Kinetic Equations**, Ithaca, N.Y. (R. L. Liboff, Applied Physics, Cornell Univ., Ithaca 14850)

12-13. **Nutritional Developments Relative to Animals in Biomedical Research**, New Brunswick, N.J. (R. M. Grey, Inst. of Comparative Medicine, Columbia Univ., New York 10032)

12-23 **Aug. Fertilization and Gamete Physiology**, Woods Hole, Mass. (C. B. Metz, Inst. of Molecular Evolution, Univ. of Miami, 521 Anastasia, Coral Gables, Fla. 33134)

14-17. **Lepidopterist Soc.**, 12th, East Lansing, Mich. (J. P. Donahue, Dept. of Entomology, Michigan State Univ., East Lansing 48823)

15-18. **Northeastern Section of the Botanical Soc. of America**, Cortland, N.Y. (R. K. Zuck, Dept. of Botany, Drew Univ., Madison, N.J. 07940)

15-18. **Harry Steenbock Symp. on the Fat Soluble Vitamins**, Madison, Wis. (H. F. DeLuca, Biochemistry Dept., Univ. of Wisconsin, Madison 53706)

15-18. **Marine Technology Soc.**, Miami Beach, Fla. (M. H. Simons, 1730 M St., NW, Washington, D.C. 20036)

15-18. **American Proctologic Soc.**, Boston, Mass. (Administrative Secretary, The Society, 320 W. Lafayette, Detroit, Mich. 48226)

15-19. **National Industrial Pharmaceutical Research Conf.**, Land O'Lakes, Wis. (W. L. Blockstein, University Extension, 190 Pharmacy Bldg., Univ. of Wisconsin, Madison 53706)

15-21. **American Astronautical Soc.**, Denver, Colo. (G. W. Morgenthaler, Box 179, Mail No. 1609, Martin-Marietta Corp., Denver 80201)

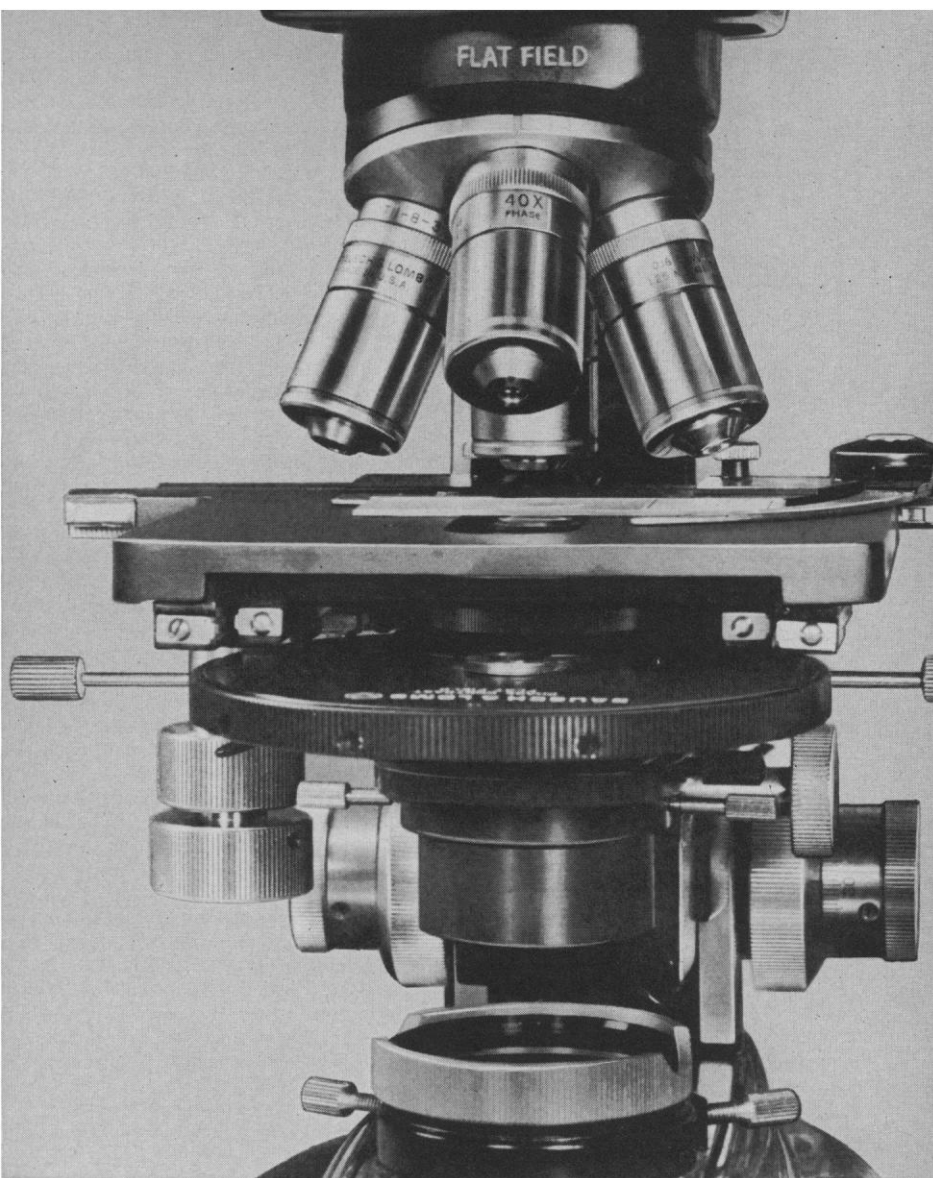
16. **Rocky Mountain National Park Seminar**, Estes Park, Colo. (T. C. Thomas, Executive Secretary, Rocky Mountain Nature Assoc., Box 147, Estes Park 80517)

16-18. **Cryogenic Engineering Conf.**, Los Angeles, Calif. (R. A. Cliffe, Executive Secretary, National Acad. of Sciences, 2101 Constitution Ave., NW, Washington, D.C. 20418)

16-18. **International Symp. on Computer Applications in the Earth Sciences**, Lawrence, Kan. (D. F. Merriam, Kansas Geological Survey, Univ. of Kansas, Lawrence 66044)

16-18. **Rock Mechanics**, 11th symp., Berkeley, Calif. (Continuing Education in

23 MAY 1969



## NEW PHASE MICROSCOPES LET YOU CHOOSE

1. A microscope from the Flat Field Phase line.
2. A microscope from the Standard Achromatic Phase line.

ALL HAVE the new turret type condenser that eliminates re-centering after magnification change;

OR the Long Working Distance condenser for tissue culture work.

NOW, for the first time, the highest performance is available, starting at \$902 (Model MBT-431—Dynoptic® Series).

GET FULL DETAILS . . . by writing for Catalog 31-104 and our free demonstration offer. Bausch & Lomb, 87817 Bausch Street, Scientific Instrument Division, Rochester, N. Y. 14602.

**BAUSCH & LOMB**   
SCIENTIFIC INSTRUMENT DIVISION

Circle No. 28 on Readers' Service Card

Shaped by  
Charles River



Shipped from  
Country Best



For the first time, the exclusive rat and mouse formulas designed for the famous Charles River Breeding Laboratories are available from Country Best. Now, users of Charles River rodents can eliminate the important diet variable by feeding the same formula from birth through experiment.

Even if you don't buy animals from Charles River, you'll like these diets—they're about the finest *basic* rat and mouse formulas that we know of. They've been developed through years of testing with millions of Charles River rodents.

If your experiments require autoclaving, the exclusive Bi-Namic™ pellet offers special advantages. Investigate the Charles River feeding program regardless of where you get your rats and mice. Packed in 50-lb. rupture-resistant bags.

COUNTRY BEST, AGWAY INC.  
Box 1333, Syracuse, N. Y. 13201  
Attention: Mr. John Noble,  
Specialties Division

Please send ☐ more information on  
*basic* formulas; ☐ information on  
autoclaving procedures; ☐ a sales  
representative; ☐ name of my near-  
est distributor

NAME \_\_\_\_\_  
TITLE \_\_\_\_\_  
COMPANY \_\_\_\_\_  
DEPT. \_\_\_\_\_  
ADDRESS \_\_\_\_\_  
CITY \_\_\_\_\_  
STATE \_\_\_\_\_ ZIP \_\_\_\_\_  
PHONE \_\_\_\_\_

**COUNTRY BEST, AGWAY INC.**  
**Syracuse, N. Y. 13201**

Circle No. 34 on Readers' Service Card

Engineering, Univ. of California Extension, 2223 Fulton St., Berkeley 94720)

16-20. American Carbon Committee, 9th biennial conf., Boston, Mass. (A. I. Medalia, 9th Carbon Conference, Cabot Corp., Billerica, Mass. 01821)

16-20. Technical Writers' Inst., 17th, Troy, N.Y. (J. R. Gould, Rensselaer Polytechnic Inst., Troy 12180)

16-27. Engineering Systems Analysis, Cambridge, Mass. (Center for Advanced Engineering Study, Room 9-257, Massachusetts Inst. of Technology, Cambridge)

18-20. American Physical Soc., Rochester, N.Y. (E. Efran, Office of Public Relations, Univ. of Rochester, Rochester 14627)

18-20. Bibliographical Soc. of America, Philadelphia, Pa. (W. H. Bond, Houghton Library, Harvard Univ., Cambridge, Mass. 02138)

18-21. Western Soc. of Malacologists, 2nd, Pacific Grove, Calif. (P. O. Hughes, 12871 Foster Rd., Los Alamitos, Calif. 90720)

19. Marine Temperature Measurements, Miami Beach, Fla. (A. E. Wheeler, Chairman, Oceanographic Instrumentation Committee, North American Rockwell Corp., 350 S. Magnolia Ave., Long Beach, Calif. 90802)

19-21. American Assoc. of Bioanalysts, New Orleans, La. (The Society, 805 Ambassador Bldg., St. Louis, Mo. 63101)

20-22. Graduate Research Conf. in Genetics and Cell Biology, Middletown, Conn. (Research Conf. Committee, Shalin Lab. of Biology, Wesleyan Univ., Middletown 06457)

20-22. American Assoc. of Neuropathologists, New Haven, Conn. (S. M. Arosen, Dept. of Pathology, Downstate Medical Center, 450 Clarkson Ave., Brooklyn, N.Y. 11203)

22-26. Air Pollution Control Assoc., 62nd, New York, N.Y. (B. Oliver, Hotel Americana, Seventh Ave. at 52nd St., New York)

22-27. American Soc. of Medical Technologists, Philadelphia, Pa. (S. B. Friedheim, Executive Director, The Society, Suite 1600, Hermann Professional Bldg., Houston, Tex. 77025)

22-27. Institute of Electrical and Electronic Engineers Summer Power Mtg., Dallas, Tex. (R. S. Miner, Dallas Power & Light Co., 1506 Commerce St., Dallas 75201)

22-27. American Soc. for Testing and Materials, 72nd, Atlantic City, N.J. (T. A. Marshall, Jr., The Society, 1916 Race St., Philadelphia, Pa. 19103)

23-25. Workshop on Computer-Based Chemical and Biological Information, Athens, Ga. (Chemical and Biological Information, Retrieval Workshop, Computer Center, Univ. of Georgia, Athens 30601)

23-25. American Water Resources Assoc., 3rd symp., Edmonton, Alberta, Canada. (A. H. Laycock, Dept. of Geography, Univ. of Alberta, Edmonton)

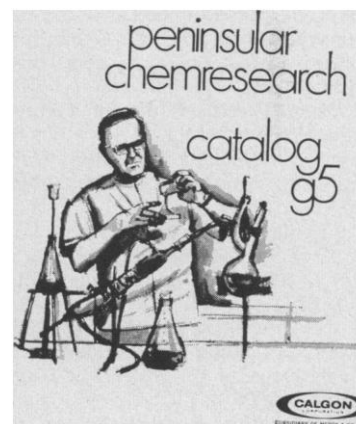
23-26. American Soc. for Engineering Education, 77th, University Park, Pa. (The Society, Suite 838, 2100 Pennsylvania Ave., NW, Washington, D.C. 20037)

23-26. Law of the Sea Inst., 4th conf., Kingston, R.I. (L. M. Alexander, Univ. of Rhode Island, Kingston 02881)

23-26. American Orthopaedic Assoc., Hot Springs, Va. (A. B. Ferguson, 125 Desoto St., Pittsburgh, Pa. 15213)

new...  
from  
pcr

CATALOG G5



organo-fluorine  
organo-silicon  
scintillators  
peptide reagents  
liquid crystals  
organic intermediates



PENINSULAR CHEMRESEARCH  
CALGON CORPORATION  
SUBSIDIARY OF MERCK & CO., INC.

FOR YOUR COPY WRITE TO PCR, DEPT. 68-1  
P.O. BOX 1468, GAINESVILLE, FLORIDA 32601

Circle No. 78 on Readers' Service Card

## What in the world ARE you doing with a Brinkmann Micromanipulator?

First and foremost, Brinkmann micromanipulators were designed for biological applications, so it's no surprise they are widely used in microsurgery and neurophysiology.

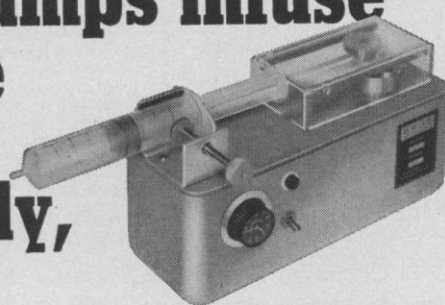
What is surprising is that they have so many other uses. For example, in microchemistry, they're used to handle radioactive samples; in electronics, to probe microcircuits, and by physicists to align laser systems.

What could you be doing more efficiently with a Brinkmann micromanipulator? Over 40 different models permit precise movement in magnification ranges up to 750X. There are inverted models, models with calibrated high sensitivity drives, tilting and rotating devices, and a full range of accessories. Let our free catalog start you thinking of some novel new uses. Just write: Brinkmann Instruments, Cantiague Rd., Westbury, New York 11590.



Circle No. 94 on Readers' Service Card

## No other pumps infuse fluids more uniformly, reproducibly, reliably



You can't beat syringe pumps for uniformity of flow, reproducibility, and their ability to handle fluids under clean, even sterile conditions. And Sage's line of more than 20 different pumps includes large and small capacity versions, discrete rate and infinitely variable rate models. Infusion/withdrawal models are available. There is even one, the new unlimited volume Model 220, which pumps continuously from a reservoir.

The Model 255-2 (shown above) permits you to dial any desired flow rate from 0.02  $\mu\text{l/hr}$  to 98 ml/hr, holds single syringes up to 100 cc capacity or two syringes up to 50 cc (for double channel pumping). Other Series 255 pumps cover different rate ranges. Price \$420. Other models from \$160. Write or call for complete data.

### SAGE INSTRUMENTS, INC.

Subsidiary of Orion Research Incorporated

230 Ferris Ave., White Plains, N.Y. 10603 ■ 914 949-4121

Circle No. 90 on Readers' Service Card

23-28. Regional Conf. on Automata Theory and Computational Complexity, Plattsburgh, N.Y. (W. E. Hartnett, Dept. of Mathematics, State Univ. of New York, College of Arts and Science, Plattsburgh 12901)

24-26. Navigation in a Changing Environment, 25th, Houston, Tex. (R. Freeman, Inst. of Navigation, 711 14th St., NW, Washington, D.C. 20005)

24-26. Trace Substances in Environmental Health Conf. Columbia, Mo. (D. D. Hemphill, 1-43 Agriculture Bldg. Univ. of Missouri, Columbia 65201)

25-27. Art of Glassblowing, 14th symp., Albany, N.Y. (J. W. Baum, 200 Highland Ave., Rensselaer, N.Y. 12144)

27-29. Endocrine Soc., New York, N.Y. (N. L. Mattox, 1211 N. Shartel, Oklahoma City, Okla. 73103)

30-1. Applications of Continuous System Simulation Languages. San Francisco, Calif. (M. Burwen, Basic Computing Arts, Inc., 2680 Bayshore Frontage Rd., Mountain View, Calif. 94040)

30-2. Action of Hormones from Molecules to Population Control, Detroit, Mich. (P. Zuckerman, 6767 W. Outer Dr., Detroit 48235)

30-2. Rudolfs Research Conf., 5th, New Brunswick, N.J. (R. Locandro, Office of Resident Instruction, Room 206, Rutgers—The State Univ., New Brunswick 08903)

### July

5-11. Tri-Organizational Science and Clinical Rehabilitation Conf., 13th, Albany, N.Y. (J. Timmerman, 1520 Van Hoesen Rd., Castleton-on-Hudson, N.Y. 12033)

6-10. Forest Products Research Soc., 23rd, San Francisco, Calif. (K. E. Huddleston, The Society, 2801 Marshall Court, Madison, Wis. 53705)

7-18. Conference on Environmental Effects on Antenna Performance, Boulder, Colo. (P. Blacksmith, AFCRL (CRD), L. G. Hanscom Field, Bedford, Mass. 01730)

7-18. Science for Clergymen, Oak Ridge, Tenn. (Special Projects Office, Oak Ridge Associated Universities, P.O. Box 117, Oak Ridge 37830)

8-11. Nuclear and Space Radiation Effects, University Park, Pa. (E. A. Burke, AFCRL (CRWH), Stop 30, L. G. Hanscom Field, Bedford, Mass. 01730)

9-12. National Soc. of Professional Engineers, Kansas City, Mo. (P. H. Robbins, The Society, 2029 K St., NW, Washington, D.C. 20006)

10-13. American Therapeutic Soc., 70th, New York, N.Y. (R. T. Smith, The Society, 37 Narbrook Park, Narberth, Pa. 19072)

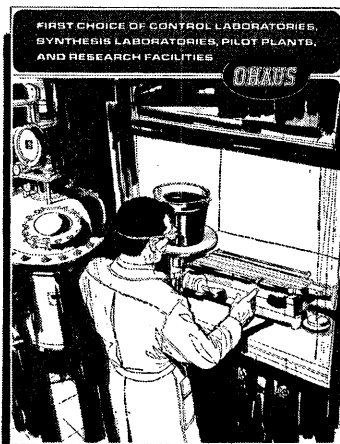
12-13. Society for Surgery of the Alimentary Tract, 10th, New York, N.Y. (J. V. Prohaska, The Society, 950 E. 59 St., Chicago, Ill. 60637)

12-13. Society for Vascular Surgery, New York, N.Y. (R. M. Nelson, Surgical Research Lab., Latter-Day Saints Hospital, Salt Lake City, Utah 84103)

13-16. Physiology and Biochemistry of Muscle as a Food, Madison, Wis. (E. J. Briskey, Muscle Biology Lab., College of Agricultural and Life Sciences, Univ. of Wisconsin, Madison 53706)

13-17. American Medical Assoc., New York, N.Y. (W. E. Burmeister, The Asso-

## Read all about the man-hour savers from Ohaus—



### Precision Balances for the Industrial Laboratory

A new 4-page brochure from Ohaus tells all about the easy-to-operate, rugged-but-accurate balances that are saving time and money for industrial laboratories all over the world:

- The 20 kg. x 1 g. top-loading solution balances designed for frequent weighings. Corrosion resistant, portable.

- The Moisture Determination Balance that gives moisture loss in both weight and percentage values for all kinds of samples. Built-in IR heating element adjusts vertically and swivels for safety.

- The Autogram — the 1000 g. x 0.1 g. top loading, direct reading balance that matches — spec for spec — balances costing much, much more. Corrosion resistant too!

- The 5 kg. x 0.5 g. even arm balance that offer speed, accuracy — and economy. Fully damped, of course.

- The Dial-O-Gram 1600 series — Top loading, general purpose balances that provide dial reading to 0.1 g. and touch'n weigh weight loading. Seven models, metric or avoirdupois.

- And the disposable balance — an even arm balance so inexpensive you can throw it away after rough, dirty use in corrosive or radioactive atmospheres. Readable to 0.5 g.

Send for Ohaus balance brochure No. 0-15 today, and learn all about the Man-Hour Savers.



**OHAUS SCALE CORPORATION**  
1050 Commerce Avenue  
Union, New Jersey 07083  
(201) 688-3400

Circle No. 99 on Readers' Service Card

ciation, 535 N. Dearborn St., Chicago, Ill. 60610)

14-16. Sanitary Engineering Research, Development, and Design, 2nd natl. symp., Ithaca, N.Y. (A. W. Lawrence, 219 Hollister Hall, Cornell Univ., Ithaca 14850)

14-18. Symposium on the Nature, Induction and Utilization of Mutations in Plants, Pullman, Wash. (J. H. Kane, Div. of Technical Information, U.S. Atomic Energy Commission, Washington, D.C. 20545)

14-18. Persistence of Food Habits: Problem in the War on Hunger, Milwaukee, Wis. (Engineering Foundation Research Conf., Room 308, 345 E. 47 St., New York 10017)

16-18. Electron Probe Analysis Soc. of America, 4th, Pasadena, Calif. (A. A. Chodos, Geology Dept., California Inst. of Technology, Pasadena 91109)

18-19. Rocky Mountain Cancer Conf., Denver, Colo. (D. G. Derry, Colorado Medical Soc., 1809 E. 18th Ave., Denver 80218)

20-25. Association for the Advancement of Medical Instrumentation, Chicago, Ill. (J. J. Post, 19 Brook Rd., Needham Heights, Mass. 02194)

21. Group Representations in Mathematics and Physics, Seattle, Wash. (R. S. Paul, Battelle Memorial Inst., 4000 NE 41st St., Seattle 89105)

21-25. Transportation Systems Analysis, Milwaukee, Wis. (Engineering Foundation Research Conferences, Room 308, 345 E. 47 St., New York 10017)

23-25. Montana Radiological Soc. Symp., Glacier National Park. (C. H. Agnew, 1231 N. 29th St., Billings, Mont. 59101)

25-26. Linguistic Soc. of America, Urbana, Ill. (R. B. Lees, Dept. of Linguistics, Univ. of Illinois, Urbana 61801)

28-29. Society of Research Administrators, San Francisco, Calif. (K. Hartford, Biology Dept., Yale Univ., 102 Kline Biology Tower, New Haven, Conn. 06520)

28-1. Instrumentation Science, research conf., Geneva, N.Y. (T. E. Tremellen, Education and Research Services, Instrument Soc. of America, 530 William Penn Pl., Pittsburgh, Pa. 15219)

28-1. Quality Engineering and Research, Milwaukee, Wis. (Engineering Foundation Research Conferences, Room 308, 345 E. 47 St., New York 10017)

### August

3-6. National Heat Transfer Conf., 11th, Minneapolis, Minn. (D. C. Kelly, American Inst. of Chemical Engineers, 345 E. 47 St., New York 10017)

3-7. Society for Cryobiology, 6th annual, Buffalo, N.Y. (R. E. Greco, 3175 Staley Rd., Grand Island, N.Y. 14072)

4-5. Aerospace Structures Design Conf., Seattle, Wash. (J. R. Fuller, Boeing Co., P.O. Box 707, Ortn. 6-8650, M/S 77-89, Renton, Wash. 98055)

4-6. Deterioration and Preservation of Library Materials, 34th annual conf., Chicago, Ill. (H. W. Winger, Graduate Library School, Univ. of Chicago, 1116 E. 59 St., Chicago 60637)

4-8. Molecular Biology and Pathology, 2nd conf., Saratoga Springs, N.Y. (K. T. Lee, Dept. of Pathology, Albany Medical College, Albany, N.Y. 12208)

Circle No. 86 on Readers' Service Card →

## your best buy in D.C. . . .



## from any angle

For the mini-price of \$90, you can choose from three compact, well regulated, constant voltage/current limiting laboratory power supplies. And, for only \$25 more, 3 additional models are available with constant voltage/constant current. We call them BENCH supplies.

These stable battery substitutes are packaged in molded, high-impact plastic cases with an interlocking feature for stacking. They can be rack mounted with an accessory kit.

Check the following specs for proof of quality at no sacrifice in performance.

Outputs ..... 0-10V @ 0-1A, 0-25V @ 0-4A, 0-50V @ 0-2A  
Regulation ..... 4 mV, Load or Line  
Ripple ..... 200  $\mu$ V rms/1mV p-p (DC to 20 MHz)  
Stability ..... 0.1% +5 mV for 8 Hours  
Size ..... 3 1/4"H x 5 1/4"W x 7"D

**HEWLETT  PACKARD**

**POWER SUPPLIES**

108 Locust Avenue  
Berkelav Heights, New Jersey 07022

## COLE-PARMER MICROMETER DISPENSERS\*

**Reproducible Volumes**  
from 0.2 ml to 10 ml

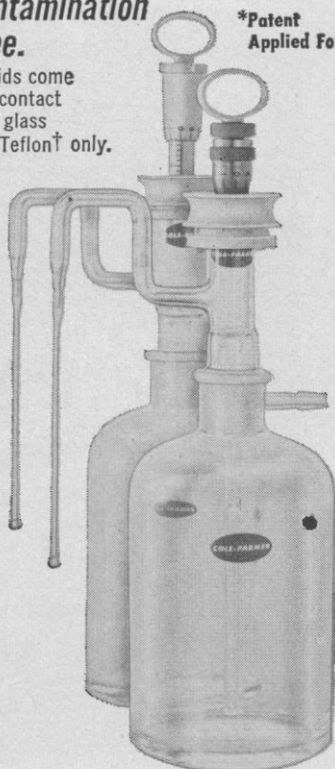
**Absolute Accuracy**  
to 0.02 ml

**Reproducibility**  
of 0.005 ml

**Contamination Free.**

Liquids come into contact with glass and Teflon† only.

\*Patent Applied For



**AUTOMATIC REPETITIVE DELIVERY.** Dispenser will continuously and precisely deliver all reagents in micrometer-set volumes.

**AVAILABLE IN TWO SIZES:** Dispensers can be obtained for delivery of volumes up to either 2 ml. or 10 ml.

**ACCURATE, EASY TO OPERATE.** High visibility micrometer graduations are accurately calibrated and can be quickly set for desired output.

**HIGH REPRODUCIBILITY.** Precision machined Teflon piston in accurately formed glass cylinder bore ensures consistency of repetitive output.

**SELF-PRIMING.** Precisely ground glass ball check valves combine self-priming action with highly accurate delivery of reagents.

**VERSATILE OUTLET FITTING.** Tapered glass Luer joint on dispenser outlet accepts either tubing or hypodermic needles.

**TWO STYLES AVAILABLE.** Dispenser can be obtained with either 500 ml. flask or with hand held barrel that can be attached by tubing to any reservoir or container.

**REAGENTS ARE PROTECTED FROM ATMOSPHERE.** Closures are provided with delivery tubes. Flask style dispensers have air vents that can be closed and that accept absorption tubes.



### NEW CATALOG

Features over 2500 instruments for Industrial Research, the Health Sciences, Chemistry, Biology and Agriculture. Free on request.

†T.M. DuPont

**COLE-PARMER**  
INSTRUMENT COMPANY

7425 N. Oak Park Ave. Chicago, Ill. 60648  
(312) 647-0272

5-8. World Conf. on Records, Salt Lake City, Utah. (S. E. Beesley, 1030 S. Orchard Dr., Bountiful, Utah 84010)

6-8. Applications of X-Ray Analysis Conf., Denver, Colo. (B. L. Henke, Div. of Metallurgy, Denver Research Inst., Denver 80210)

10-13. Soil Conservation Soc. of America, Fort Collins, Colo. (H. W. Pritchard, 7515 N.E. Ankeny Rd., Ankeny, Iowa 50021)

11-13. Symposium on Crystal Growth, Washington, D.C. (H. S. Peiser, Room B316, Bldg. 223, National Bureau of Standards, Washington, D.C. 20234)

11-14. Society of Photo-Optical Instrumentation Engineers, 14th annual technical symp., San Francisco, Calif. (H. L. Kasnitz, SPIE Symposium, P.O. Box 288, Redondo Beach, Calif. 90277)

12. American Astronomical Soc., Albany, N.Y. (G. C. McVittie, Univ. of Illinois Observatory, Urbana 61801)

17-22. Animal Behavior Soc., Burlington, Vt. (B. Dane, Tufts Univ., Medford, Mass.)

17-22. American Inst. of Biological Science, Burlington, Vt. (J. R. Olive, 3900 Wisconsin Ave., NW, Washington, D.C. 20016)

17-22. American Soc. of Zoologists, Burlington, Vt. (J. R. Shaver, Dept. of Zoology, Michigan State Univ., East Lansing 48823)

18. American Soc. of Pharmacognosy, Corvallis, Ore. (P. Catalfomo, School of Pharmacy, Oregon State Univ., Corvallis 97331)

18-20. Genetics Soc. of America, Madison, Wis. (B. Wallace, Dept. of Genetics, Cornell Univ., Ithaca, N.Y. 14850)

18-21. American Hospital Assoc., Chicago, Ill. (E. L. Crosby, 840 N. Lake Shore Dr., Chicago 60611)

18-22. New England Assoc. of Chemistry Teachers, 31st summer conf., Plymouth, N.H. (M. P. Olmsted, Publicity Chairman, NEACT, 9 Brookmont Dr., Wilbraham, Mass. 01095)

18-22. Marine Biomedicinals Symp., 10th annual, Corvallis, Ore. (P. Catalfomo, School of Pharmacy, Oregon State Univ., Corvallis 97331)

18-22. American Phytopathological Soc., Spokane, Wash. (J. P. Fulton, Dept. of Plant Pathology, Univ. of Arkansas, Fayetteville 72701)

18-22. National Goals in Water Pollution Control, Santa Barbara, Calif. (F. A. Butrico, Coordinator of Environmental Sciences Programs, Battelle Memorial Inst., Columbus Labs., Washington, D.C.)

19. Biometric Soc., western North American regional, Pullman, Wash. (J. S. Williams, Statistical Lab., Colorado State Univ., Fort Collins)

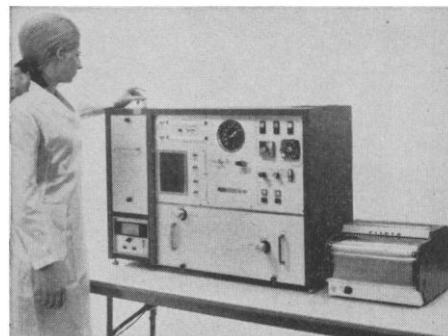
19-22. Biometric Soc., eastern North American regional, New York, N.Y. (D. G. Gosslee, P.O. Box 713, Oak Ridge, Tenn. 37830)

19-22. American Assoc. of Clinical Chemists, 21st natl. mtg., Denver, Colo. (J. Preston, P.O. Box 18323, Capitol Hill Station, Denver 80218)

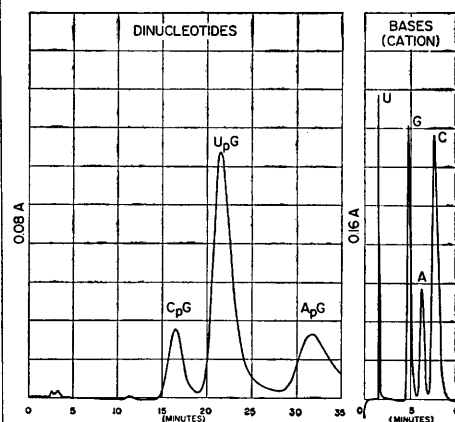
19-22. Western Electronic Show and Convention, San Francisco, Calif. (D. W. Martin, WESCON, 3600 Wilshire Blvd., Los Angeles, Calif. 90005)

19-22. American Soc. for Horticultural

## Picker's new high-pressure ion exchange liquid chromatograph



## made these separations:



in 35  
minutes (1.)

and 10  
minutes (2.)

This Picker LCS-1000 is an ideal system for high speed (an hour or less instead of a day or more), high resolution (see curves above), high sensitivity (nanomole quantities sufficient) quantitative separation of water-soluble ionizable compounds. Effectively separates DNA and RNA hydrolysates (bases, nucleosides, nucleotides, and dinucleotides). Other applications: clinical chemistry, drug metabolite studies, food chemistry.

Write for detailed information on the LCS-1000 and our rental and lease plans.

Picker Nuclear, 1275 Mamaroneck Avenue, White Plains, N.Y. 10605.

(1.) Separation of dinucleotides.

(2.) Separation of nucleic acid bases.

## PICKER

Circle No. 35 on Readers' Service Card

Circle No. 76 on Readers' Service Card

Science, 44th annual, Pullman, Wash. (C. Blackwell, The Society, 615 Elm St., St. Joseph, Mich. 49085)

19-22. American Statistical Assoc., 129th, New York, N.Y. (D. C. Riley, The Association, 810 18th St., NW, Washington, D.C. 20006)

19-23. American Fern Soc., Seattle, Wash. (A. M. Evans, Dept. of Botany, Univ. of Tennessee, Knoxville 37916)

20-22. American Soc. of Civil Engineers, Hydraulics Conf., Logan, Utah. (ASCE Hydraulics Conf., % Utah Water Research Lab., Utah State Univ., Logan 84321)

21-23. American Nature Study Soc., Pullman, Wash. (J. Geisler, Milewood Rd., Verbank, N.Y. 12585)

24-25. Programming Languages Definition, San Francisco, Calif. (J. A. Painter, IBM Corp., Research Lab., Dept. 978, Bldg. 025, Monterey and Cottle Rds., San Jose, Calif. 95114)

24-27. Alaska Div., AAAS, College. (V. Fisher, Inst. of Social, Economic and Government Research, Univ. of Alaska, College 99701)

24-27. Defects in Electronic Materials for Devices, Boston, Mass. (D. P. Seraphim, IBM Components Div., Bldg. 300, Hopewell Junction, N.Y. 12533)

24-27. Conference on Food-Drugs from the Sea, Kingston, R.I. (G. F. Greene, Jr., % Professional Services, Abbott Labs., North Chicago, Ill. 60064)

24-29. Gerontological Soc., Washington, D.C. (E. Kaskowitz, The Society, 660 S. Euclid St., St. Louis, Mo. 63110)

24-2. Botanical Soc. of America, Seattle, Wash. (R. C. Starr, Dept. of Botany, Indiana Univ., Bloomington 47401)

25-27. Applied Mechanics Western Conf., Albuquerque, N.M. (A. B. Conlin, Jr., Technical Depts., 345 E. 47 St., New York 10017)

25-27. Mathematical Assoc. of America, Eugene, Ore. (A. B. Willcox, The Association, 1225 Connecticut Ave., NW, Washington, D.C. 20036)

25-28. Chromosphere-Corona Transition, Boulder, Colo. (J. W. Evans, Sacramento Peak Observatory, Sunspot, N.M. 88349)

26-28. Engineering Applications of Electronic Phenomena Conf., Ithaca, N.Y. (H. J. Carlin, School of Electrical Engineering, Cornell Univ., Ithaca 14850)

26-29. Electron Microscope Soc. of America, St. Paul, Minn. (G. G. Cocks, Olin Hall, Cornell Univ., Ithaca, N.Y. 14850)

28-1. Society of Petroleum Engineers, Denver, Colo. (J. B. Alford, 6200 N. Central Expressway, Dallas, Tex. 75206)

31-4. Psychometric Soc., Washington, D.C. (W. B. Schrader, Educational Testing Service, Princeton, N.J. 08540)

31-6. Quantum Solids: Hydrogen and Helium, Aspen, Colo. (J. C. Raich, Colorado State Univ., Fort Collins 80521)

#### International and Foreign Meetings

##### July

2-4. Lasers in Medicine, London, W.1, England. (Inst. of Physics and the Physical Soc., 47 Belgrave Sq., London, S.W.1)

23 MAY 1969

# Sepharose®



## Now— the whole field of agarose gel filtration covered by Sepharose 6B-4B-2B

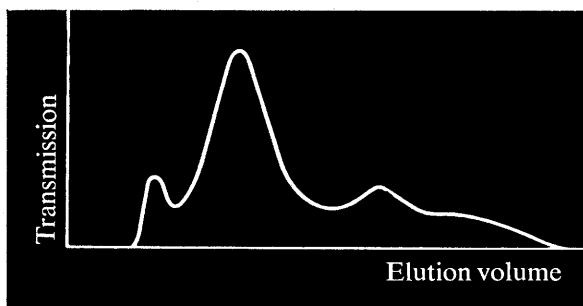
for the separation of high  
molecular weight proteins and polysaccharides,  
nucleic acids and viruses

☐ The beaded form of the agarose gel—Sepharose—ensures high flow rate and excellent resolution.

☐ New Sepharose 6B, a rigid gel with superior flow properties, is especially suitable for separation in and above the upper fractionation range of Sephadex G-200.

Please ask for further information.

Approx. exclusion limits MW		
	polysaccharides	proteins
Sepharose 6B New!	1 x 10 <sup>6</sup>	4 x 10 <sup>6</sup>
Sepharose 4B	5 x 10 <sup>6</sup>	20 x 10 <sup>6</sup>
Sepharose 2B	20 x 10 <sup>6</sup>	40 x 10 <sup>6</sup>



Purification of commercially available thyroglobulin on Sepharose 6B.

PHARMACIA FINE CHEMICALS INC.



800 CENTENNIAL AVENUE  
PISCATAWAY, N. J. 08854

Pharmacia (Canada) Ltd. 110 Place Cremazie, Suite 412, Montreal 11, P.Q.

(Inquiries outside U.S.A. and Canada should be directed to PHARMACIA FINE CHEMICALS, Uppsala, Sweden.)

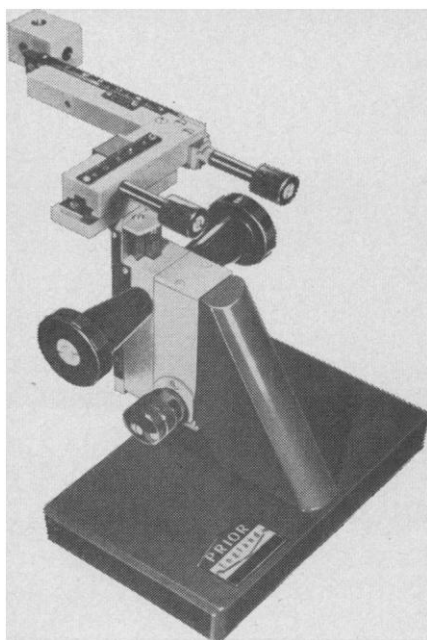
Circle No. 27 on Readers' Service Card



**3-DIRECTIONAL  
HIGH RESOLUTION**

**PRIOR**

# MICRO- MANIPULATORS



Offering resolutions of 0.0001" in the vertical plane and 0.004" in the two horizontal planes, the Micro-manipulator has both coarse and vernier controls in all directions. Available accessories include Ball & Socket Joints and Adjustable Needle Holders.

Right or left hand model with standard base .....\$200

Right or left hand model with tilt movement .....\$225

Right or left hand model with magnetic base .....\$250

Right or left hand model with magnetic base and tilt movement .....\$275

Promptly obtainable from:

**eric sobotka**  
company, inc.

112 Finn Ct., Farmingdale, N.Y. 11735 (516) 293-9272



Circle No. 33 on Readers' Service Card

988

2-10. Soc. of Protozoologists, Leningrad, U.S.S.R. (D. M. Hammond, Dept. of Zoology, Utah State Univ., Logan 84321)

6-9. Canada Paediatric Soc., Montreal, P.Q. (J. H. V. Marchessault, The Society, 14 Green Ave., St. Lambert, P.Q.)

6-11. Barley Genetics, intern. symp., Pullman, Wash. (R. A. Nilan, Dept. of Agronomy, Washington State Univ., Pullman 99163)

7-10. British Medical Assoc., Aberdeen, Scotland. (Executive Officer, The Association, Tavistock Sq., London W.C.1, England)

7-11. Heterocyclic Chemistry, intern. congr., Montpellier, France. (N. H. Cromwell, Dept. of Chemistry, Univ. of Nebraska, Lincoln 68508)

8-10. Rational Development and Application of Drugs, Nijmegen, Netherlands. (E. J. Ariens, Geert Grooteplein 21, Nijmegen)

12-19. International Inst. of Welding, 22nd, Kyoto, Japan. (P. D. Boyd, The Institute, 54 Princes Gate, Exhibition Rd., London, S.W.7, England)

13-19. Clinical Pathology, 7th intern. congr. Montreal, Canada. (VII Intern. Congr. of Clinical Pathology, P.O. Box 8, Station "G" Montreal 18)

14-16. Non-conventional Electron Microscopy, Oxford, England. (Inst. of Physics and the Physical Soc., 47 Belgrave Sq., London, S.W. 1, England)

14-17. International Turfgrass Research Conf., Yorkshire, England. (J. B. Beard, Dept. of Crop Sciences, Michigan State Univ. East Lansing)

14-18. International Atomic Absorption Spectroscopy Conf., Sheffield, Yorks, England. (Conference Secretary, Soc. for Analytical Chemistry, 9-10, Saville Row, London, W.1, England)

14-18. Chemical Control of the Human Environment, intern. symp., Johannesburg, South Africa. (Intern. Union for Pure and Applied Chemistry, CSIR, Box 395, Pretoria, South Africa)

14-18. Pharmacology, 4th intern. congr., Basel, Switzerland. (F. J. Bové, Congr. on Pharmacology 1969, Postfach 30, 4000 Basel 4)

15-18. Nuclear Reactions Induced by Heavy Ions, Heidelberg, Germany. (H. v. Buttler, Dept. of Physics, Ruhr Univ., D 463 Bochum, Federal Republic of Germany)

21-24. International Conf. on Clustering Phenomena in Nuclei, Bochum, Federal Republic of Germany. (P. Kramer, Theoretical Physics Dept., Gartenstrasse 47, D 74 Tübingen, Federal Republic of Germany)

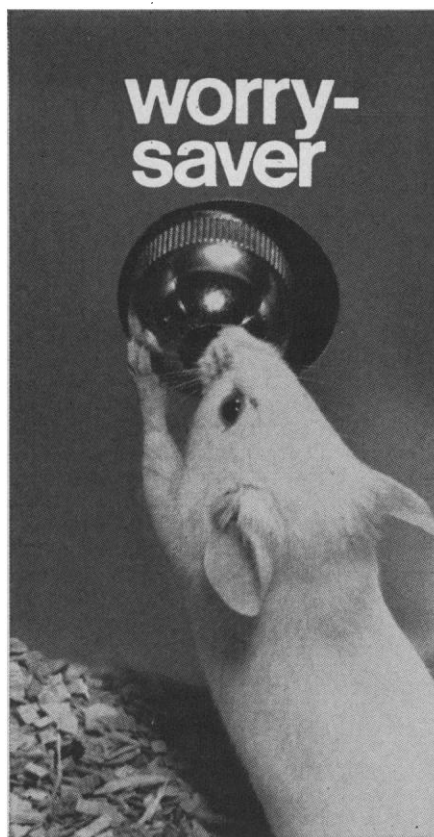
27-2. Psychology, 19th intern. congr., London, England. (Secretariat, 19th Intern. Congr., 17 Gordon Sq., London W.C.1)

27-3. Hemorheology, 2nd intern. conf., Heidelberg, Germany. (G. Bugliarello, PH 123-C, Carnegie-Mellon Univ., Pittsburgh, Pa. 15213)

28-30. Computational Physics, Berkshire, England. (B. McNamara, United Kingdom Atomic Energy Agency, Culham Lab., Culham, near Abingdon, Berkshire)

28-1. Fission, Vienna, Austria. (H. v. Buttler, Dept. of Physics, Ruhr Univ., D 463 Bochum, Federal Republic of Germany)

28-2. International Conf. on the Physics

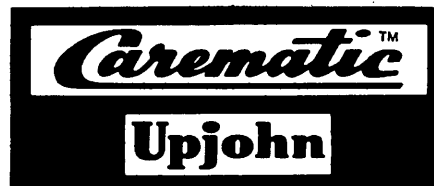


## CAREMATIC™ ANIMAL WATERING SYSTEM

*Reliability* is just one of the important benefits designed into each Carematic Automatic Animal Watering System. It shows, for example, in the flow-through design and the long-lasting materials used in its unique, self-cleaning drinker valve. It shows in the simplicity and ease of operation made possible by the system's float-regulated water tank—reducing line pressure to a flow which can be handled by the smallest animal. You'll find a Carematic System can be a real worry-saver for you. Send today for details.

**NOW... a reliable drinker valve**

*Precision engineered, and produced under rigid specifications, this remarkable valve operates on the diaphragm principle and makes all others appear obsolete. After proper installation, reliable performance is assured by the Teflon valve seat which provides a positive water seal and is resistant to build-up of deposits from material common in most water.*



CAREMATIC SYSTEMS CA-29C  
The Upjohn Company, Kalamazoo, Michigan 49001

Circle No. 98 on Readers' Service Card

of **Electron and Atomic Collisions**, Cambridge, Mass. (I. Amdur, Dept. of Chemistry, Massachusetts Inst. of Technology, Cambridge 02139)

August

4-7. International Conf. on **Raman Spectroscopy**, Ottawa, Ont., Canada. (J. A. Koningstein, Chemistry Dept., Carleton Univ., Ottawa)

4-9. International **Rhinologic Soc.**, Mexico, D.F. (G. H. Drumheller, 1515 Pacific, Everett, Wash. 98201)

4-15. **Vertebrate Evolution: Mechanism and Process**, Istanbul, Turkey. (M. K. Hecht, Dept. of Biology, Queens College, Flushing, N.Y. 11367)

10-14. International Conf. on **Medical Physics**, 2nd, Boston, Mass. (E. W. Webster, Dept. of Radiology, Massachusetts General Hospital, Boston 02114)

10-15. **Chemotherapy**, 6th intern. congr., Tokyo, Japan. (W. P. Boger, P.O. Box 265, Princeton, N.J. 08540)

11-15. International Conf. of **Medical Physics**, Boston, Mass. (W. T. Maloney, Suite 620, 6 Beacon St., Boston 02108)

12-15. International **Photoconductivity Conf.**, 3rd, Palo Alto, Calif. (G. S. Picus, Hughes Research Labs., 3011 Malibu Canyon Rd., Malibu, Calif. 90265)

17-21. International Assoc. of **Milk, Food and Environmental Sanitarians**, Louisville, Ky. (H. L. Thomasson, Box 437, Shelbyville, Ind. 46176)

20-21. International **Electronic Circuit Packaging Symp.**, San Francisco, Calif. (IECPS Papers Selection Committee, % WESCON, 3600 Wilshire Blvd., Los Angeles, Calif. 90005)

20-27. International Union of **Pure and Applied Chemistry**, 22nd, Sydney, Australia. (J. R. Price, Box 2249U, G.P.O. Melbourne, Australia 3001)

21-28. International Symp. on **Statistical Ecology**, New Haven, Conn. (G. P. Patil, Dept. of Statistics, 302 McAllister Bldg., Pennsylvania State Univ., University Park, Pa. 16802)

24-26. Laurentian **Hormone Conf.**, Mont Tremblant, P.Q., Canada. (Laurentian Hormone Conf. Office, 222 Maple Ave., Shrewsbury, Mass. 01545)

24-28. **Mobilizing Canada's Agricultural Resources**, 49th, Saskatoon, Sask. (R. H. Burrage, 1969 AIC Convention Committee, Box 800, Sub. P.O. No. 6, Saskatoon, Sask.)

24-29. **Gerontology**, 8th intern. congr., Washington, D.C. (N. W. Shock, 9650 Rockville Pike, Bethesda, Md. 20014)

24-29. **Neuropathology**, 6th intern. congr., Copenhagen, Denmark. (E. Christensen, Universitets Psykiatriske Lab., Rigshospitalet, Copenhagen)

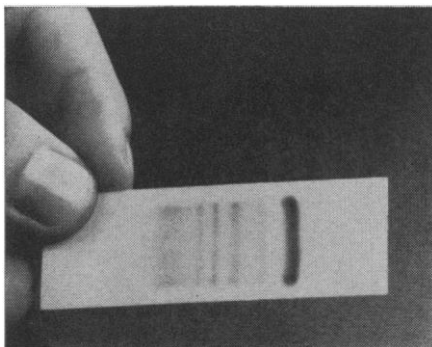
25-29. International **Agricultural Aviation Congr.**, 4th, Kingston, Ont., Canada. (K. M. Ward, National Research Council of Canada, Ottawa, Ont.)

25-29. International Conf. on **Luminescence**, Newark, Del. (F. Williams, Dept. of Physics, Univ. of Delaware, Newark 19711)

25-30. International Symp. on **Space Technology and Science**, 8th, Tokyo, Japan. (T. Hayashi, Dept. of Aeronautics, Univ. of Tokyo, Bunkyo-ku, Tokyo 113, Japan)

23 MAY 1969

# TITAN III ( A MAJOR ADVANCE ) IN ELECTROPHORESIS ) CELLULOSE ACETATE PLATE



TITAN III Plate can be used for any type of electrophoresis. Complete instructions are available for:

SERUM PROTEINS  
LDH ISOENZYMES  
IMMUNOELECTROPHORESIS  
HEMOGLOBINS  
LIPOPROTEINS  
GLYCOPROTEINS  
HAPTOGLOBINS

TITAN III CELLULOSE ACETATE PLATE is a hypergel cellulose acetate supported by a rigid clear plastic base. It offers unmatched resolution along with the easiest handling of all electrophoretic support media. Separation time is 50% less than that of regular cellulose acetate. No separation takes more than 30 minutes. The entire staining and clearing procedure takes only 30 minutes and technician time is less than 1 minute per sample.

## HELENA LABORATORIES

16147 Philomene Allen Park, Michigan 48101 (313) 388-2220

WRITE OR CALL COLLECT FOR FREE SAMPLES  
PLUS COMPLETE INSTRUCTIONS TO ADAPT  
YOUR ELECTROPHORESIS CHAMBER

Circle No. 100 on Readers' Service Card

## PRECISE Versatility

ONE BATH TO FILL  
MANY LAB NEEDS!

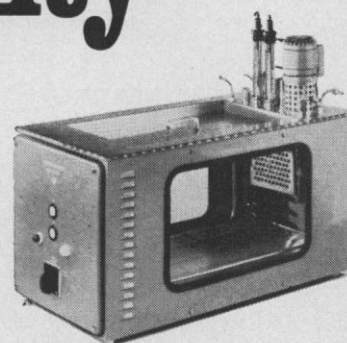
Work Area: 17" x 10" x 12" deep.

**Circulation Pump:** Allows circulation of bath fluid to external apparatus at flows up to 130 gal/hr (0 head). Maximum head 10 feet.

Dual double-pane windows of tempered safety glass provide distortion free visual access.

All metal in contact with bath fluid is stainless steel.

**Accessories:** Refrigeration to  $-35^{\circ}\text{C}$   
Adjustable Shelf  
Safety Cut-off



**MODEL TEVB-45**  
Thermostatic Bath  
Temp. range to  $+230^{\circ}\text{C}$   
Max. temp. variation:  
 $\pm 0.01^{\circ}\text{C}$  (water)  
 $\pm 0.02^{\circ}\text{C}$  (oil)

**NESLAB**  
Instruments, Inc.



Temperature Controlled  
*Liquid* Systems

871 Islington St., Portsmouth, N.H. 03801

Circle No. 55 on Readers' Service Card