

the infused kidney after a few minutes at cyclic AMP concentrations from 10^{-4} to $10^{-5}M$. This work provided additional evidence for the intermediary role of cyclic AMP in the action of parathyroid hormone on the kidney.

Finally, there was some light from Sledge (Massachusetts) on the subject of heparin and related compounds in the release of lysozyme from embryonic cartilage. A flourishing finish to a successful symposium in which old subjects were aired once again and one or two promising new starters stumbled under questioning.

The proceedings of this symposium are published in the supplement to volume 2 of *Calcified Tissue Research*.

B. E. C. NORDIN

F. G. E. PAUTARD

*The Medical School, Leeds
University, Leeds 2,
Yorkshire, England*

Calendar of Events

Courses

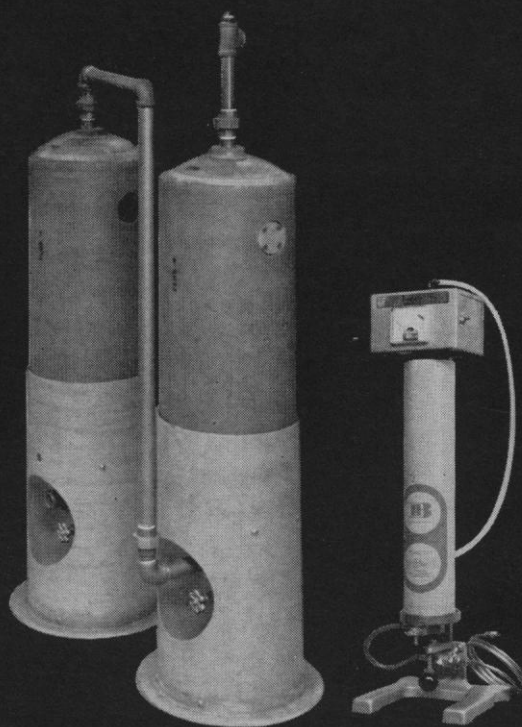
Electron Microscopy in the Biological Sciences, Boston, Mass., 15-27 June. This is the 11th session of a 2-week intensive program in the preparation of biological materials as electron microscope specimens, electron microscopy, and interpretation of results. Designed for doctoral level investigators who wish to use the electron microscope in their research, but who have little or no experience in the field. Advanced graduate students will be considered. Limited to 12 students. (Prof. Clifford Youse, Center for Continuing Education, Northeastern University, 360 Huntington Ave., Boston 02115)

X-ray Diffraction Theory and Practice, Chicago, Ill., 16-20 June (elementary) and 23-27 June (advanced). The elementary course will include the study of physics of x-rays, elementary crystallography, elements of x-ray diffraction theory, techniques of x-ray diffraction analysis, procedures and interpretation of x-ray powder diagrams, elementary indexing procedures, identification of unknown substances, and precision lattice parameter determination. The advanced course will include sessions on the reciprocal lattice concept, development of theory for x-ray intensity, single-crystal techniques, Laue method, the rotating crystal technique, preferred orientation, and quantitative analysis. Tuition for each course is \$250, or \$400 for both (Prof. Paul Gordon, Metallurgical Engineering Department, Illinois Institute of Technology, Chicago 60616)

Marine Sciences. Courses will be offered at Cape Henlopen Marine Laboratory during the summer of 1969. Marine biology, coastal vegetation, geology of Recent sedimentary environments, and engineer-

Quick-Change Artists

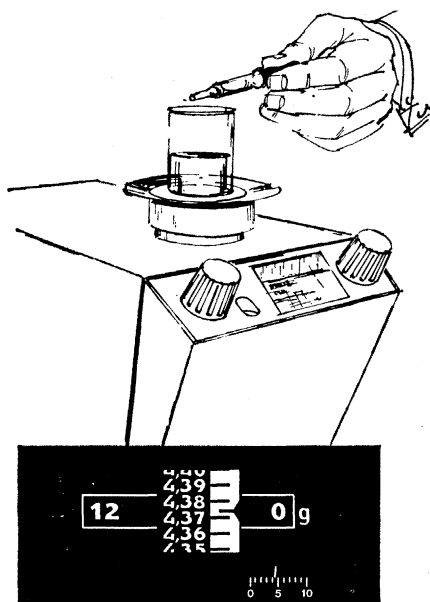
(Barnstead cartridge demineralizers meet any need from 5 to 3,000 gph. Some are both reusable and disposable.)



Look at the choice:

Low-cost throw-aways you attach to a faucet. 5 to 25 gph "Bantam" lab units with a purity meter on top (more informative than color changes or "idiot lights"). Portable "Suprcartridges"® for pressures to 100 psi, flow rates to 3,000 gph. Standard; mixed-bed; organic, oxygen or cation removal; special types. We make them all. And many of our larger cartridge demineralizers offer the options of disposal, reactivation by Barnstead, or regeneration in your plant. Write for the complete story on the industry's most complete line of cartridge demineralizers. The Barnstead Company, A Division of Ritter Pfaudler Corp., 225 Rivermoor Street, Boston, Mass. 02132.

Barnstead
A DIVISION OF RITTER PFAUDLER CORPORATION



Mettler
Top-Loading Balances ...
tell what
a sample weighs
while you're
weighing it

You just cannot weigh any faster or any easier than with a Mettler top-loading balance. Place your sample on the pan. Then read the weight.

Even if you are filling a container to a target weight, Mettler's helpful filling guide shows the approximate weight on the pan throughout the filling . . . without interruptions.

Newest of the Mettler top-loaders is Model P162. It weighs up to 160 grams with a precision of ± 1 mg. And, like other Mettler top-loaders, provides digital and analog read-out. Your new people will get the same precise results as the head of the department.

Select the exact balance you need for your work from 16 Mettler top-loaders. Besides their most important use in weighing unknowns, they may also be used for check-weighing, weighing-in, batching, and weighing objects below the balance.

We'd like to show you our top-loaders in your lab, or send you our catalog. For demonstration or details, write: Mettler Instrument Corporation, 20 Nassau Street, Princeton, New Jersey 08540.

Mettler®

Circle No. 86 on Readers' Service Card

ing in a coastal environment will be presented during the first term; marine biology, physical oceanography, marine botany, and tidal marsh studies will be presented during the second term. These courses will be appropriate for graduate students, undergraduates, and teachers. (Dr. Harry W. Wells, Department of Biological Sciences, Marine Laboratories, University of Delaware, Newark 19711)

Experimental Pathology, Cambridge, Mass., 16-27 June. Is intended for M.D.'s and Ph.D.'s in the biomedical sciences who desire to obtain a broad survey of the field of experimental pathology, or to refresh their knowledge in specified aspects of the field. Applications will also be considered from experienced technical personnel without doctoral degrees sponsored by their professional institutions. Registration limited to 25 full participants (\$250) and 25 associate participants (\$150), to be chosen by a faculty committee on the basis of background and experience. (Dr. F. Homburger, Bio-Research Institute, Inc., 9 Commercial Ave., Cambridge 02141)

Bio-Medical Telemetry, San Diego, Calif., 25-28 June. Is designed to introduce physicians, scientists, and engineers to this field; to present enough information for them to incorporate telemetry in their own research and to provide sufficient background in electronics for them to select equipment and recognize proper performance. Demonstrations, displays (including instrumented experimental animals), motion pictures, and slides will be used to make these diverse matters more graphic. Fee: \$125 for professionals; \$60 for graduate students. *Deadline for applications: 2 June.* (Mrs. Pat Austin, University Extension, P.O. Box 109, La Jolla, Calif. 92037)

National Meetings

May

3. American Soc. for **Clinical Nutrition**, Atlantic City, N.J. (A. B. Eisenstein, 818 S. Meramec Ave., St. Louis, Mo. 63105)

3. American College of **Psychiatrists**, Bal Harbour, Fla. (M. Sabshin, P.O. Box 6998, Chicago, Ill. 60680)

4-5. American Soc. for **Clinical Investigation**, Atlantic City, N.J. (D. H. Nelson, Latter-Day Saints Hospital, Salt Lake City, Utah 84103)

4-6. American Soc. for **Adolescent Psychiatry**, Miami Beach, Fla. (H. D. Staples, 24 Green Valley Rd., Wallingford, Pa. 19086)

4-7. American Inst. of **Chemical Engineers**, 65th natl. mtg., Cleveland Ohio. (The Institute, 345 E. 47 St., New York 10017)

4-7. American **Mining** Congr., Pittsburgh, Pa. (The Congress, 1100 Ring Building, Washington, D.C. 20036)

4-8. American Soc. of **Brewing Chemists**, Baltimore, Md. (Executive Secretary, The Society, 501 N. Walnut St., Madison, Wis.)

4-8. Soc. of **Plastics Engineers**, 27th, Chicago, Ill. (Director, Member Activities, The Society, 65 Prospect St., Stamford, Conn.)

4-9. **Electrochemical** Soc., New York, N.Y. (The Society, 30 E. 42 St., New York 10017)

5-8. **Aerospace Dynamic Balancing**, 2nd symp., San Francisco, Calif. (G. E. Henning, Boeing Co., P.O. Box 3868, Mail Stop 85-93, Seattle, Wash. 98124)

5-6. **Theory of Computing** Symp., Marina del Ray, Calif. (M. A. Harrison, Dept. of Computer Science, Univ. of California, Berkeley 94720)

5-7. Instrumentation Soc. of America, **Aerospace Instrumentation** Symp., Las Vegas, Nev. (E. K. Merewether, Computer Operations, Wyle Systems, 128 Maryland St., El Segundo, Calif.)

5-7. American **Gynecological** Soc., New Orleans, La. (D. J. Lund, Univ. of Rochester Medical Center, 260 Crittenden Blvd., Rochester, N.Y. 14620)

5-7. **Practical Applications of Radioisotopes to Industry**, Pullman, Wash. (R. M. Chatters, Washington State Univ., Pullman 99163)

5-8. Society of **Aeronautical Weight Engineers**, 28th, San Francisco, Calif. (C. R. Pullen, Aerospace Corp., P.O. Box 95085, El Segundo, Calif. 90045)

5-8. **Aerospace Medical** Assoc., 40th, San Francisco, Calif. (D. I. Fryer, British Embassy, 3100 Massachusetts Ave., NW, Washington, D.C. 20008)

5-8. **Metal Powder** Industrial Federation and American **Powder Metallurgy**, Inst., 25th, New York, N.Y. (P. K. Johnson, Metal Powder Industries Federation, 201 E. 42 St., New York 10017)

5-8. **Radiation Biology of the Fetal and Juvenile Mammal** Symp., Richland, Wash. (M. R. Sikov, Biology Dept., Battelle-Northwest, P.O. Box 999, Richland 99352)

5-9. American **Psychiatric** Assoc., 125th, Bal Harbour, Fla. (Public Information Officer, 1700 18th St., NW, Washington, D.C. 20009)

6-7. Conference on **Waste Management and Disposal for the Food Processing Industry**, University Park, Pa. (J. O. Keller Conf. Center, Pennsylvania State Univ., University Park 16802)

6-8. **Frequency Control** Symp., Atlantic City, N.J. (Director, Electronic Components Lab., U.S. Army Electronics Command, Fort Monmouth, N.J. 07703)

6-8. **Industrial Waste** Conf., Lafayette, Ind. (D. E. Bloodgood, Sanitary Engineering, Purdue Univ., Lafayette 47907)

6-8. **Microfilm** Assoc., 18th natl., Boston, Mass. (G. D. Hoffman, Eastman Kodak Co., 343 State St., Rochester, N.Y. 14650)

7-9. American Assoc. of **Genito-Urinary Surgeons**, Pebble Beach, Calif. (H. M. Spence, 4105 Live Oak St., Dallas, Tex. 75221)

7-10. American Assoc. for **Child Care in Hospitals**, Ann Arbor, Mich. (D. E. Lidgard, University Hospital, Univ. of Michigan Medical Center, Ann Arbor 48104)

7-10. Association of **University Radiologists**, San Francisco, Calif. (A. Gottschalk, 950 E. 59 St., Chicago, Ill. 60037)

8-10. **Breast Cancer**, natl. conf., Washington, D.C. (R. N. Grant, The Conference, 219 E. 42 St., New York 10017)

8-10. American Assoc. for the **History of Medicine**, Baltimore, Md. (C. W. Bode-

mer, Biomedical History Dept., Univ. of Washington Medical School, Seattle 98105)

8-9. **Military History**, 3rd symp., U.S. Air Force Academy, Colo. (Lt. Col. W. Geffen, Dept. of History, U.S. Air Force Academy, Colo. 80840)

9-10. **Arthritis Seminar**, Roanoke, Va. (R. H. Brumfield, Jr., P.O. Box 1531, Roanoke, 24007)

9-10. American Natl. **Red Cross**, 2nd research symp., Washington, D.C. (G. A. Jamieson, American Natl. Red Cross, Washington, D.C. 20006)

11-14. **Fluid Controls Inst., Inc.**, Sea Island, Ga. (P.O. Box 1485, Pompano Beach, Fla. 33061)

11-15. Institute of **Food Technologists**, 29th, Chicago, Ill. (C. L. Willey, 221 N. Lasalle St., Chicago 60601)

12-14. American Soc. for **Gastrointestinal Endoscopy**, Washington, D.C. (V. M. Smith, 301 St. Paul Pl., Baltimore, Md. 21202)

12-14. Workshop on **Computer Stimulation of Microbial Processes**, Clemson, S.C. (Office of Industrial and Municipal Relations, College of Engineering, 109 Riggs Hall, Clemson 29631)

12-15. Seminar on **Physical and Chemical Properties of Woodpulp Fibers**, Appleton, Wis. (Technical Assoc. of the Pulp and Paper Industry, 360 Lexington Ave., New York, N.Y.)

12-15. Mid-America Symp. on **Spectroscopy**, 20th, Chicago, Ill. (Illinois Inst. of Technology Research Inst., 10 W. 35 St., Chicago, 60616)

12-15. American **Urological Assoc.**, Inc., San Francisco, Calif. (W. P. Didusch, 1120 N. Charles St., Baltimore, Md.)

12-16. American **Industrial Hygiene Conf.**, Denver, Colo. (The Association, 14125 Prevost, Detroit, Mich. 48227)

12-16. Soc. of **Photographic Scientists and Engineers**, Los Angeles, Calif. (The Society, 1330 Massachusetts Ave., NW, Washington, D.C. 20005)

12-17. American Assoc. on **Mental Deficiency**, San Francisco, Calif. (J. J. Noone, 5201 Connecticut Ave., NW, Washington, D.C. 20015)

13-16. Society for **Experimental Stress Analysis**, Philadelphia, Pa. (P. Monchamp, 21 Bridge Sq., Westport, Conn. 06880)

14-16. Spring Joint **Computer Conf.**, Boston, Mass. (A. Levine, 105 Newbury St., Boston 02116)

14-16. American **Helicopter Soc.**, 25th, natl. forum, Washington, D.C. (K. C. Mard, Sikorsky Aircraft, North Main St., Stratford, Conn. 06497)

14-17. American **Gastroenterological Assoc.**, Washington, D.C. (D. Cayer, 2240 Cloverdale Ave., Winston-Salem, N.C. 27103)

14-17. Society of **Technical Writers and Publishers**, 16th, Washington, D.C. (C. T. Youngblood, Suite 421, 1010 Vermont Ave., NW, Washington, D.C. 20005)

15-16. Southern **Textile Research Conf.**, Hilton Head Island, S.C. (G. F. Walz, Proximity Print Works, Greensboro, N.C. 27405)

16. Symp. on **Oil Pollution of the Sea**, Cambridge, Mass. (J. A. Fay, Room 30246, Massachusetts Inst. of Technology, Cambridge 02139)

16-17. **Nature and Function of Peroxisomes**, New York, N.Y. (J. F. Hoff, Dept.

of Chemistry, Queens College, Flushing, N.Y. 11367)

18-19. Council of **Biology Editors**, Cambridge, Mass. (R. E. Gordon, Dean's Office, College of Science, Univ. of Notre Dame, Notre Dame, Ind. 46556)

18-21. Institute of Electronic and Electrical Engineers **Power Industry Computer Applications Conf.**, Denver, Colo. (W. D. Trudgen, General Electric Co., 2255 W. Desert Cove Rd., Phoenix, Ariz. 85029)

18-21. **Radiation Research Soc.**, 17th, Cincinnati, Ohio. (F. Smith, Biology Dept. American Univ., Washington, D.C. 20016)

18-21. American **Thoracic Soc.**, Miami Beach, Fla. (Executive Secretary, 1790 Broadway, New York 10019)

18-22. National **Tuberculosis Assoc.**, 65th, Miami Beach, Fla. (J. E. Perkins, 1790 Broadway, New York 10019)

18-23. Conf. on **Mass Spectrometry and Applied Topics**, 17th, Dallas, Tex. (J. M. McCrea, c/o Applied Research Lab., U.S. Steel Corp., Monroeville, Pa. 15146)

19-20. **Rolamite Technology Seminar**, Chicago, Ill. (J. Weidman, III, Director of Public Relations, Hamilton Watch Co., Lancaster, Pa. 17604)

19-21. **Aerospace Electronics Conf.**, Dayton, Ohio. (J. E. Singer, 5704 Coach & Four Dr. East, Kettering, Ohio 45440)

19-21. **Interdisciplinary Conf.**, 1st, Houston, Tex. (M. A. Wright, Humble Oil and Refining Company, Box 2180, Houston 77001)

19-21. **New Dimensions in Legal and Ethical Concepts for Human Research**, New York, N.Y. (I. Ladimer, Mt. Sinai Medical School, Fifth Ave. and 100 St., New York 10029)

19-23. Western **Anesthesiology Conf.**, Salt Lake City, Utah. (J. Stringham, 11 S. 5th E., Salt Lake City 84106)

19-30. **Selected Applications of Computers in Engineering**, Ann Arbor, Mich. (Engineering Summer Conf., Univ. of Michigan, Chrysler Center, Dept. 58, Ann Arbor 48105)

19-30. **Numerical Methods, Optimization Techniques, and Process Simulation for Engineers**, Ann Arbor, Mich. (Engineers Summer Conf., Univ. of Michigan, Chrysler Center, Dept. 58, Ann Arbor 48105)

20. Association for the Advancement of **Psychoanalysis**, New York, N.Y. (M. Lee, Public Relations Committee, The Association, 329 E. 62 St., New York 10021)

21-23. Symp. on **Electron, Ion, and Laser Beam Technology**, Gaithersburg, Md. (L. Marton, Natl. Bureau of Standards, Washington, D.C. 20234)

21-24. **Acute Medicine**, 3rd symp., Pittsburgh, Pa. (Postgraduate Medical Program, Univ. of Pittsburgh, 1188 Scaife Hall, Pittsburgh 15213)

22-23. IEEE Workshop on **Applied Magnetics**, Washington, D.C. (O. Kiltie, Ballastan Corp., Executive Blvd., Fort Wayne, Ind. 46808)

22-23. **Diseases in Nature Transmissible to Man**, 19th southwestern conf., San Antonio, Tex. (S. S. Kalter, P.O. Box 2296, San Antonio 78206)

24-26. National **Tuberculosis and Respiratory Disease Assoc.**, Miami Beach, Fla. (J. E. Perkins, The Association, 1740 Broadway, New York 10019)

your best buy
in D.C. . . .



from any angle

For the mini-price of \$90, you can choose from three compact, well regulated, constant voltage/current limiting laboratory power supplies. And, for only \$25 more, 3 additional models are available with constant voltage/constant current. We call them BENCH supplies.

These stable battery substitutes are packaged in molded, high-impact plastic cases with an interlocking feature for stacking. They can be rack mounted with an accessory kit.

Check the following specs for proof of quality at no sacrifice in performance.

Outputs 0-10V @ 0-1A, 0-25V @ 0-4A, 0-50V @ 0-2A
Regulation 4 mV, Load or Line
Ripple 200 μ V rms/1mV p-p (DC to 20 MHz)
Stability 0.1% +5 mV for 8 Hours
Size 3 1/4"H x 5 1/4"W x 7"D

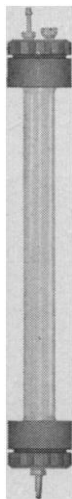
HEWLETT **hp** PACKARD

POWER SUPPLIES

108 Locust Avenue
Berkeley Heights, New Jersey 07922 21901

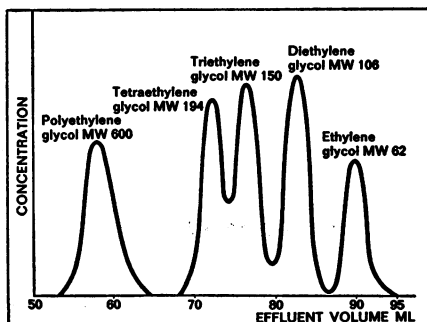
For fractionation of
low molecular
weight solutes...

Sephadex® G-10 and Sephadex® G-15

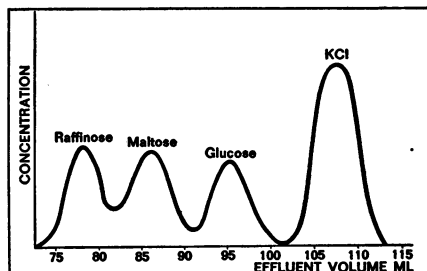


Sephadex G-10 and Sephadex G-15 are new additions to Pharmacia's continuously expanding line of separation products: gel filtration media and ion exchangers. These two products now open a new area of fractionation of low molecular weight substances such as peptides, amino acids, nucleotides and nucleosides.

The figures below give some examples of the excellent separation properties of these newest Sephadex types.



Fractionation of oligomers of ethylene glycols on Sephadex G-10.



Desalting of raffinose, maltose and glucose on Sephadex G-15.

TECHNICAL DATA

Type	Fractionation range (molecular weight)	Water regain (g H ₂ O/g dry gel)	Particle size (microns)
Sephadex G-10	up to 700	1.0 ± 0.1	40-120 (beads)
Sephadex G-15	up to 1,500	1.5 ± 0.2	40-120 (beads)

For additional technical information, including booklet on Sephadex G-10 and G-15, write to:



PHARMACIA FINE CHEMICALS INC.
800 Centennial Avenue, Piscataway, N.J. 08854
Pharmacia (Canada) Ltd., 110 Place Crémazie,
Suite 412, Montreal 11, P.Q.

(Inquiries outside U.S.A. or Canada should be directed to PHARMACIA FINE CHEMICALS, Uppsala, Sweden.)

Circle No. 90 on Readers' Service Card

25-27. **Drug Information Assoc.**, Detroit, Mich. (J. J. Harris, Public and Professional Relations Committee, c/o Schering Labs, 1011 Morris Ave., Union, N.J. 07083)

25-29. **National Conf. on Social Welfare**, 96th, New York, N.Y. (B. B. Shepherd, The Conference, 22 West Gay St., Columbus, Ohio 43215)

26-27. **Rheumatoid Factors**, New York, N.Y. (H. Bartfeld, St. Vincent's Hospital, 153 W. 11 St., New York 10011)

26-28. **Symp. on Advances in Instrumentation for Air Pollution Control**, Cincinnati, Ohio. (A. P. Altschuler, Natl. Air Pollution Control Administration, 5710 Wooster Pike, Cincinnati 45227)

26-28. **IEEE Conf. on Laser Engineering and Applications**, Washington, D.C. (W. B. Bridges, Hughes Research Labs., 3011 Malibu Canyon Rd., Malibu, Calif. 90265)

26-28. **Advanced Marine Vehicle and Propulsion Mtg.**, Seattle, Wash. (C. T. Ray, Advanced Marine Systems, Boeing Co., P.O. Box 3999, Mail Stop 32-51, Seattle, Wash. 98124)

26-28. **American Ophthalmological Soc.**, Hot Springs, Va. (S. D. McPherson, Jr., 1110 W. Main St., Durham, N.C. 27701)

29-1. **Congress on Medical and Related Aspects of Motor Vehicle Accidents**, New York, N.Y. (Secretariat, Internatl. Assoc. for Accident and Traffic Medicine, 520 First Ave., New York 10016)

International and Foreign Meetings

May

26-30. **Spectroscopy**, 15th intern. colloquium, Madrid, Spain. (Secretary, XV Colloquium Spectroscopium Internationale, Serrano 119, Madrid 6)

27-31. **International Assoc. of Thalassotherapy**, 14th, Eforie Nord, Roumania. (Prof. Binculescu, Strada Transilvaniei 47, Bucharest, Roumania)

27-1. **German Congr. for Medical Continuation Studies**, 18th, Berlin. (Kongressgesellschaft für Ärztliche Fortbildung, Klingsortstr. 21, Berlin 41)

28-7. **Pro Aqua Congr.**, 4th, Basel, Switzerland. (O. Jaag, % Secretariat Pro Aqua, Basel 21)

29-3. **International Assoc. for Accident and Traffic Medicine**, 3rd, New York, N.Y. (M. Helpert, % Office of Chief Medical Examiner, 520 First Ave., New York 10016)

29-19. **General Assembly of Pan-American Inst. of Geography and History**, Washington, D.C. (C. A. Forray Rojas, Ex-Arzbispado 29, Mexico, D.F. Mexico)

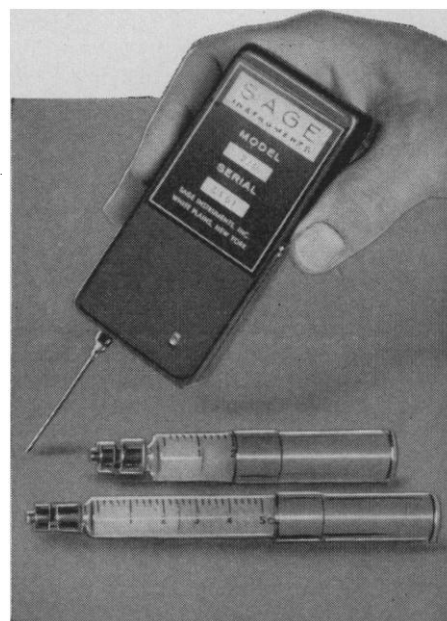
June

1-12. **Symposium on Non-Destructive Testing of Concrete and Timber**, London, England. (Institution of Civil Engineers, Great George St., London, S.W.1)

2-6. **International Symp. on Yeasts**, Delft and The Hague, Netherlands. (L. Rodrigues de Miranda, Organizing Committee, Julianalaan 67A, Delft)

3-13. **International Conf. on Arid Lands in a Changing World**, Tucson, Ariz. (International Arid Lands Conf., % Dept. of Geochronology, Univ. of Arizona, Tucson 85721)

Infuse unrestrained animals and patients



with 3 **SAGE** portable,
self-contained,
battery-powered
miniature
pumps

Sage Micro-Flow pumps permit continuous, long term chemotherapy of ambulatory patients and drug experiments on unrestrained animals.

They operate by electrolysis. A uniformly generated gas behind the piston drives the syringe at the selected rate.

Model 216, in a compact box only 4½" x 2" x 1", provides flow rates from 1 ml/¼ hr to 1 ml/24 hr and has 10 ml capacity for infusions of up to 10 days. Models 285 and 227 have capacities of 1 ml and 2½ ml respectively and can be attached to all but the smallest laboratory animals.

Model 216 is priced at \$215; others at \$125 and \$145.

Write for technical data.

SAGE INSTRUMENTS, INC.

Subsidiary of Orion Research Incorporated
230 Ferris Ave., White Plains, N.Y. 10603
914 949-4121

Circle No. 87 on Readers' Service Card

4-6. **Automated Analysis**, intern. Congr., Chicago, Ill. (J. E. Golin, Technicon Corp., Ardsley, N.Y. 10502)

4-7. **Union of Textile Chemists and Colorists**, 21st Congr., Baden-Baden, Germany. (The Union, Rohsbacherstr. 78, Heidelberg, Germany)

5. **European Federation of International College of Surgeons**, London, England. (F. P. Fitzgerald, 129 Harley St., London, W.1)

5-7. **Mineralogical Assoc. of Canada**, Montreal, P.Q. (J. Beland, Dept. of Geology, Univ. of Montreal, Montreal)

5-11. **Forensic Sciences**, 5th intern., Toronto, Ont., Canada. (L. Ball, Center of Forensic Sciences, Dept. of Attorney General, 8 Jarvis Street, Toronto 2)

6-9. **Canadian Pediatric Soc.**, Montreal, P.Q. (J. H. V., Marchessault, 14 Green Ave., St. Lambert, Quebec City, P.Q.)

8-14. **Canadian Medical Assoc.**, 102nd, Toronto, Ont., Canada. (The Association, 170 St. George Street, Toronto, Canada)

9-11. **International Communications Conf.**, Boulder, Colo. (M. Nesenbergs, Environmental Science Services Administration, Inst. for Telecommunication Sciences, R614, Boulder 80302)

9-12. **International Food Congr. and Exhibition**, 7th, Madrid, Spain. (L. Naranon, % Federacion Nacional de Almacenistas de Alimentacion, Paseo del Prado 18-20, Planta 11, Madrid)

9-13. **Clean Air Congr. and Exhibition**, Dusseldorf, Germany. (V. Deutscher, Postfach 1139, 4 Dusseldorf 1)

9-14. **Canadian Assoc. of Pathologists**, Toronto, Ont., Canada. (D. W. Penner, Winnipeg General Hospital, Winnipeg 3, Manitoba)

10-20. **International Marine and Shipping Conf.**, London, England. (Inst. of Marine Engineers, 76 Mark Lane, London, E.C.3)

11-13. **Canadian Federation of Biological Societies** (Canadian Physiological Soc., Pharmacological Soc. of Canada, Canadian Assoc. of Anatomists, Canadian Biochemical Soc.), 12th, Edmonton, Alberta. (A. H. Neufeld, Univ. of Western Ontario, London, Ont., Canada)

11-14. **Canadian Psychiatric Assoc.**, 19th, Toronto, Ont. (W. A. Blair, 225 Lisgar St., Ottawa, Ont.)

14-20. **Canadian Assoc. of Gastroenterology**, 8th, Toronto, Ont. (The Association, 426 170 St. George St., Toronto 5)

15-18. **Chemical Inst. of Canada**, 19th, Montreal, P.Q. (The Institute, 151 Slater St., Ottawa 4, Ont.)

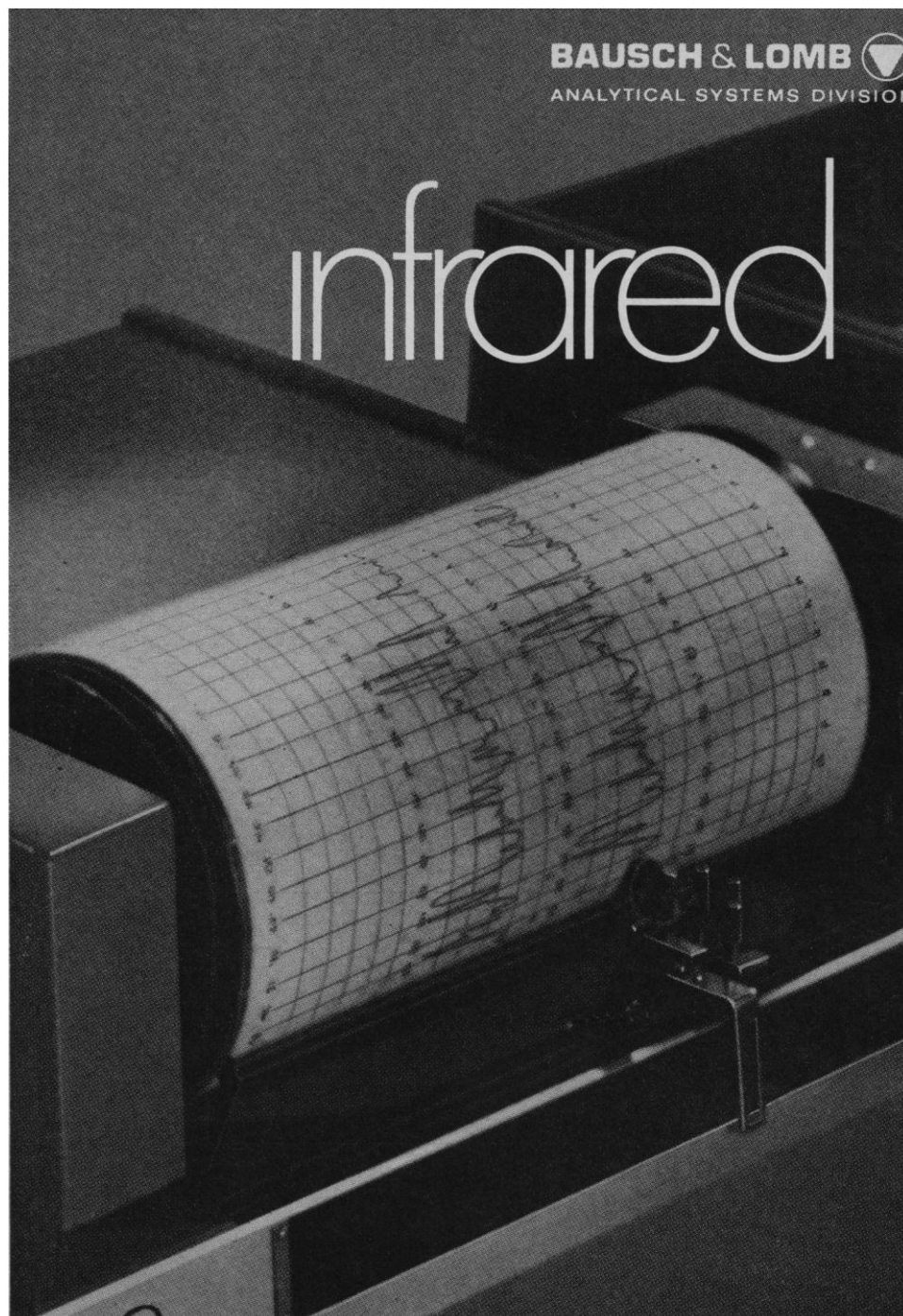
15-20. **Canadian Anaesthetists Soc.**, 20th, Toronto, Ont. (E. R. Campbell, 178 St. George St., Toronto 5)

15-20. **International Data Processing Conf.**, Montreal, Canada. (M. Rafferty, Data Process Managing Assoc., 505 Busse Highway, Park Ridge, Ill. 60068)

15-22. **World Medical Assoc.**, 23rd, Paris, France. (M. Poumailloux, Domus Medica, 60 Blvd. de Labour-Maubourg, Paris 15)

16-18. **Thermophysics Conf.**, 4th, San Francisco, Calif. (E. R. Streed, Vehicle Systems Design Branch, NASA Ames Research Center, N244-6, Moffett Field, Calif. 94035)

16-21. **Triennial Congr. of Intern. Federation of Automatic Control**, Warsaw, Poland. (Organizing Committee, Ul Czackiego 3/5, P.O. Box 903, Warsaw 1)

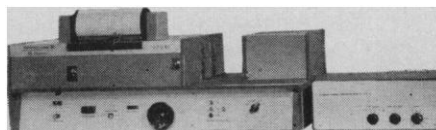


continuous scanning

... over the entire $4000-400\text{ cm}^{-1}$ range is just one of the unique features of the Bausch & Lomb/Shimadzu SPECTRONIC 270 IR Infrared Spectrophotometer. An automatic grating-and-filter interchange permits recording absorption spectra *continuously—with no scanning stop*. A vernier gives 10X readability over the paper, there's a 3 slit program for automatic operation, and you can make manual ad-

justments as well. You can get three different size spectra—normal, 2:1 scale expansion on the T axis, and reduced for report writing. There's a 5X wavelength scale expansion and a choice of four scanning speeds—10, 20, 45, and 90 minutes.

Performance is outstanding, too. Exceptionally high resolution— 0.8 cm^{-1} at 1000 cm^{-1} (manually); $\pm 0.5\%$ T accuracy; 0.5% T reproducibility; and very low stray light. Care to compare? Write for our Catalog 39-6009, or insist on a demonstration. Analytical Systems Division, Bausch & Lomb, 75916 Bausch Street, Rochester, New York 14602.



Spectronic 270 IR Infrared Spectrophotometer