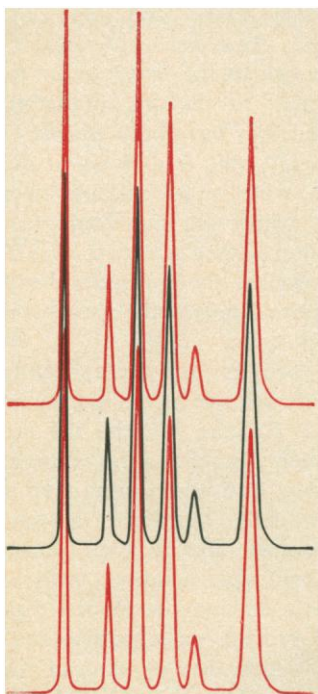


## Automated Chemical Analysis

By permitting unattended overnight operation, automated chemical instrumentation can (1) reduce the investment in the number of instruments needed for chemical analyses and (2) reduce the payback time for computerized data handling systems.

## Gas Chromatography

The instrument of choice for most organic chemical analyses is the gas chromatograph. Using a totally automated gas chromatograph coupled to a computer, cost savings of as much as \$100 per day per instrument can be realized. *One hundred dollars per day.* Worth looking into? Write us—we'll send you the details.



**BARBER - COLMAN  
CHROMATOGRAPHY**

Rockford, Illinois 61101

Circle No. 81 on Readers' Service Card

1272

by the university's board of trustees and administration so that the majority of students and the community will not be bypassed in order to pursue unrealistic academic goals. Such a policy should carry with it the idea that the growth and ultimate prestige of the university depend on how well it serves the community, not on how well it compares with M.I.T.

The emphasis should be placed on that research and innovation which will benefit the underdeveloped area. After all, the most prestigious universities of our time were founded originally to serve the educational and cultural needs of their Colonial and pioneer communities. If institutions which serve primarily underdeveloped constituencies would set their goals realistically, their graduates could return to teach in them with a true sense of purpose and attune themselves to those policies, regardless of where they obtained their advanced training.

RUPERT G. SEALS

*Department of Dairy and Food  
Industry, Iowa State University,  
Ames 50010*

### Appreciation

We have been informed that 4 March 1969 was designated as a holiday by a number of M.I.T. scientists and other researchers around the country. We also note that 4 March happens to be the birthday of the City of Chicago (incorporated 1837). We sincerely thank our colleagues for their thoughtfulness in helping us celebrate this memorable event.

A. BEZKOROVAINY\*

*6801 Kilpatrick Avenue,  
Lincolnwood, Illinois 60646*

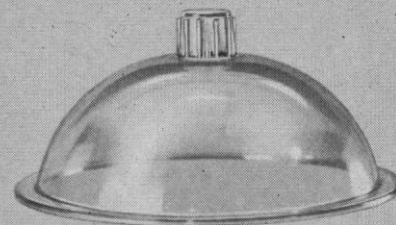
T. HOEVEKE\*

*1925 West Newport,  
Chicago, Illinois 60657*

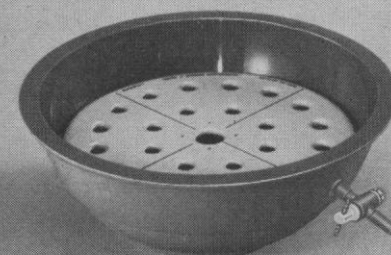
\* Ad Hoc Committee of Two for the Preservation of Chicago as a Scientific Convention City.

### Common Leeches

It would be greatly appreciated if any reader of *Science* would send me information concerning suppliers of the common leech. The supplier, Carolina Biologicals, from whom I usually obtain leeches has informed me that they will not be able to supply any until early or mid-April. A slip from the



**A desiccator  
that's  
unbreakable  
and  
beautiful...**



from the top of its transparent, distortion-free dome to the bottom of its blue-green base. That's why you'll be proud to own a new Nalgene® Vacuum Desiccator. Inside this spacious desiccator you can use our new ceramic-metal desiccator plate of Nucerite® or any other one you'd like.

When you specify Nalgene Labware, 20 years' leadership says you're right. Ask your Laboratory Supply Dealer for our new Catalog, or write Dept. 2103, Nalgene Labware Division, Rochester, N.Y. 14602.

NALGENE LABWARE DIVISION



VISIT OUR BOOTH AT THE FEDERATION SHOW  
Circle No. 88 on Readers' Service Card

SCIENCE, VOL. 163

dorsal muscle of this animal is used in my laboratory for the biological assay of acetylcholine. Other systems have been tried, but none have been found to be sensitive enough for my work. A supplier of this animal is needed so that the main line of research in my laboratory can continue.

LOUIS A. BARKER

Department of Neurochemistry,  
New York State Institute for Basic  
Research in Mental Retardation,  
1050 Forest Hill Road,  
Staten Island 10314

### Guide for Biology Referees

The Council of Biology Editors' Committee on editorial policy has asked Franz Ingelfinger and me to draft a guide for referees or reviewers of journal articles.

Our first step is to collect prepared statements now used by journal editors for instructing reviewers. Readers can help by sending copies of such statements to me. We also welcome comments on the reviewing process from editors, referees, or authors.

KARL F. HEUMANN

Federation of American Societies for  
Experimental Biology, 9650 Rockville  
Pike, Bethesda, Maryland 20014

### Dynastic Dutch

In reference 5 of his article (5 Apr. 1968, p. 28), J. Z. Levinson describes the confusion in the *Journal of the Optical Society of America* where a Dutch name, H. de Lange, Dzn., is indexed under "Dzn." "In Holland, one writes the abbreviation in three letters 'zn' for 'zohn,' preceded by the father's initial," says Levinson.

In Dutch registers, indexes, and telephone directories names such as de Lange, van Allen, and van der Mast are indexed under L, A, and M, respectively, never under D or V. Although Jr. and Sr. are common abbreviations in Dutch, Dzn. (contraction of D-zoon, not zohn) is not. It gives no indication of one's relation to another in terms of age, as Jr. and Sr. do. An abbreviation like Dzn. only identifies someone without indicating the exact family relation.

G. J. VAN KOLMESCHATE

Tak van Poortvlietstraat 17,  
Delft, Holland

# NEW!



1528 Pages  
Size 8"x10"

## TWO CATALOGS IN ONE!

Over 30,000 stock items are listed in this new comprehensive laboratory supply catalog.

Like our previous catalog 66, this new edition contains two separate volumes bound together for your convenience. The 1124-page *General Section* lists thousands of modern scientific instruments, apparatus, appliances and general laboratory glassware and supplies. The 340-page *Inter-Joint Section* covers our entire line of interchangeable glassware. A 64-page cross-referenced index separates the two sections. General information is given in the 8-page preface.

To receive this valuable buying guide (mailed without charge), please write to us on your official letterhead.

- *Easy to Use*
- *Numbers in Sequence*
- *Page Headings Alphabetized*
- *Thousands of Illustrations*
- *Helpful Tables and Charts*
- *Cross-referenced Index*



**LABORATORY...**  
♦ APPARATUS  
♦ INSTRUMENTS  
♦ CHEMICALS  
♦ GLASSWARE

Branches: Boston 16 Mass. Danbury Conn. Elk Grove Village Ill. Fullerton Calif. Philadelphia 2 Penna. Silver Spring Md. Syracuse 2 N.Y.

Circle No. 21 on Readers' Service Card