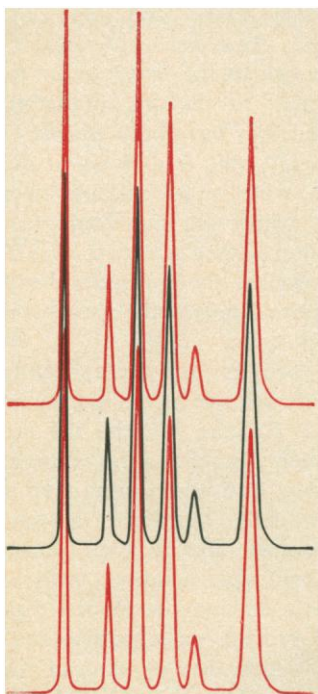


Automated Chemical Analysis

By permitting unattended overnight operation, automated chemical instrumentation can (1) reduce the investment in the number of instruments needed for chemical analyses and (2) reduce the payback time for computerized data handling systems.

Gas Chromatography

The instrument of choice for most organic chemical analyses is the gas chromatograph. Using a totally automated gas chromatograph coupled to a computer, cost savings of as much as \$100 per day per instrument can be realized. *One hundred dollars per day.* Worth looking into? Write us—we'll send you the details.



BARBER - COLMAN
CHROMATOGRAPHY

Rockford, Illinois 61101

Circle No. 81 on Readers' Service Card

1272

by the university's board of trustees and administration so that the majority of students and the community will not be bypassed in order to pursue unrealistic academic goals. Such a policy should carry with it the idea that the growth and ultimate prestige of the university depend on how well it serves the community, not on how well it compares with M.I.T.

The emphasis should be placed on that research and innovation which will benefit the underdeveloped area. After all, the most prestigious universities of our time were founded originally to serve the educational and cultural needs of their Colonial and pioneer communities. If institutions which serve primarily underdeveloped constituencies would set their goals realistically, their graduates could return to teach in them with a true sense of purpose and attune themselves to those policies, regardless of where they obtained their advanced training.

RUPERT G. SEALS

*Department of Dairy and Food
Industry, Iowa State University,
Ames 50010*

Appreciation

We have been informed that 4 March 1969 was designated as a holiday by a number of M.I.T. scientists and other researchers around the country. We also note that 4 March happens to be the birthday of the City of Chicago (incorporated 1837). We sincerely thank our colleagues for their thoughtfulness in helping us celebrate this memorable event.

A. BEZKOROVAINY*

*6801 Kilpatrick Avenue,
Lincolnwood, Illinois 60646*

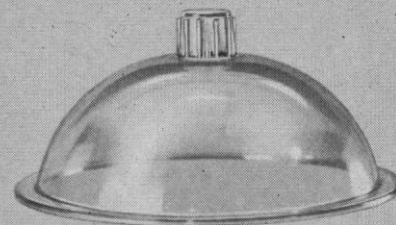
T. HOEVEKE*

*1925 West Newport,
Chicago, Illinois 60657*

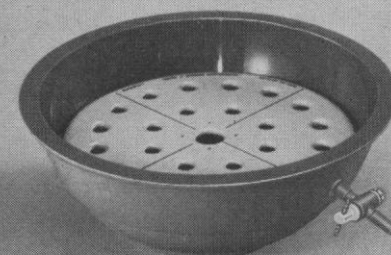
* Ad Hoc Committee of Two for the Preservation of Chicago as a Scientific Convention City.

Common Leeches

It would be greatly appreciated if any reader of *Science* would send me information concerning suppliers of the common leech. The supplier, Carolina Biologicals, from whom I usually obtain leeches has informed me that they will not be able to supply any until early or mid-April. A slip from the



**A desiccator
that's
unbreakable
and
beautiful...**



from the top of its transparent, distortion-free dome to the bottom of its blue-green base. That's why you'll be proud to own a new Nalgene® Vacuum Desiccator. Inside this spacious desiccator you can use our new ceramic-metal desiccator plate of Nucerite® or any other one you'd like.

When you specify Nalgene Labware, 20 years' leadership says you're right. Ask your Laboratory Supply Dealer for our new Catalog, or write Dept. 2103, Nalgene Labware Division, Rochester, N.Y. 14602.

NALGENE LABWARE DIVISION



VISIT OUR BOOTH AT THE FEDERATION SHOW
Circle No. 88 on Readers' Service Card

SCIENCE, VOL. 163