

Matheson Model 3500 Regulator

No adsorption

No desorption

No inboard leakage

An exceptionally well designed regulator featuring a stainless steel diaphragm and packless outlet valve. Delivery pressure range 0-75 p.s.i.g., cylinder pressure gauge 0-3000 p.s.i.g. Recommended for laboratory and processing facilities using ultra high purity gases, corrosive gases; for trace gas analysis, for moisture analysis, doping gases, for crystal growing, etc. See Matheson Catalog, or write for Engineering Report to Matheson, P. O. Box 85, East Rutherford, N. J. 07073.



MATHESON GAS PRODUCTS
A Division of Will Ross, Inc.
East Rutherford, N.J.; Cucamonga, Calif.;
Gloucester, Mass.; Joliet, Ill.;
La Porte, Texas; Morrow, Ga.;
Newark, Calif.; Whitby, Ont.

Circle No. 78 on Readers' Service Card

Postharvest Physiology

P. H. Heinze, chairman; H. K. Pratt, vice chairman.

18 August. Physiological phenomena of maturation and senescence (general) (J. B. Biale, discussion leader): A. C. Hulme. External control of maturation and senescence (R. Ulrich, discussion leader): L. L. Morris.

19 August. Physiological and biochemical problems in the postharvest handling of crops: metabolic disturbances, chilling, etc. (J. M. Lyons, discussion leader): I. Uritani and B. McGlasson.

20 August. The role of ethylene in senescence and other aspects of metabolism (M. Lieberman, discussion leader): H. Pratt and H. Imaseka. Hormonal control of aging (F. Abéles, discussion leader): Daphne Osborne and A. C. Leopold.

21 August. Protein and nucleic acid metabolism during maturation and senescence (J. E. Varner, discussion leader): D. R. Dilley and A. Richmond. Enzyme regulatory mechanisms of maturation and senescence (G. C. Laties, discussion leader): Roy Young and Joseph Sacher.

22 August. Membranes and organelles: structure, composition and changes during maturation and senescence (F. W. Mercer, discussion leader): W. Thomson and P. Mazliak.

Laser Interaction with Matter

Harlow G. Ahlstrom, co-chairman; Petras V. Avizonis, co-chairman.

25 August. Laser glass (Alex Glass, chairman): G. Young, "American Optical glass"; H. Lee, "Owens-Illinois glass"; (speaker to be announced), "C.G.E. glass"; J. Swain, "Survey of laser glasses." Laser devices (R. J. Collins, chairman): J. Swain, "Disk lasers"; E. D. Jones, "Picosecond lasers"; R. Rudder, "Subnanosecond lasers."

26 August. Nanosecond pulse heating (R. Kidder, chairman): D. H. Polk, (speaker to be announced), J. L. Bobin. Picosecond pulse heating (R. Osborne, chairman): R. Kidder, J. Shearer, and M. J. Lubin.

27 August. Injection (A. Bishop, chairman): P. Saunders, E. Fabre, M. J. Lubin, A. Haught, and W. J. Fader. Diagnostics (F. Ribe, chairman): M. A. Duguay and S. T. Shapiro, "Picopulses"; A. G. Englehardt, "Thomson scattering." Business meeting.

28 August. Long wavelength plasma

heating (A. Kolb, chairman): John Dawson, R. Kidder, and A. Hertzberg. Colliding plasmas (John Walsh, chairman): G. J. Yevick and (speaker to be announced).

29 August. Lasers and CTR in panel discussion (P. V. Avizonis and H. G. Ahlstrom, moderators): panel: J. Dawson, R. Kidder, A. Hertzberg, J. Tuck, P. Veyrie, A. Bishop, N. Basov, A. Haught.

Calendar of Events

National Meetings

March

20-22. American Acad. of **Facial Plastic and Reconstructive Surgery**, New Orleans, La. (J. R. Anderson, 111 Tulane Ave., New Orleans 70112)

23-29. American **Crystallographic Assoc.**, Seattle, Wash. (W. L. Kehl, Gulf Research and Development Co., P.O. Box 2038, Pittsburgh, Pa. 15230)

24-25. **Basis of Decision**, Brooklyn, N.Y. (C. McC. Brooks, Downstate Medical Center, State Univ. of New York, 450 Clarkson Ave., Brooklyn 11203)

24-25. **Laser Safety Conf. and Workshops**, 2nd, Cincinnati, Ohio. (L. Goldman, Laser Lab., Children's Hospital Research Foundation of the Medical Center of the Univ. of Cincinnati, Cincinnati)

24-27. American **Physical Soc.**, Philadelphia, Pa. (W. W. Havens, Jr., The Society, 335 E. 45 St., New York 10017)

24-28. **Desalination: Methods and Applications**, Berkeley, Calif. (Continuing Education in Engineering, Univ. Extension, Univ. of California, 2223 Fulton St., Berkeley 94720)

25-27. American **Laryngological, Rhinological and Otolological Soc.**, Inc., New Orleans, La. (V. R. Alfaro, 917 20th St., NW, Washington, D.C. 20006)

26-28. National **Business Aircraft Mfg. and Engineering Display**, Wichita, Kan. (A. J. Favata, SAE Headquarters, 2 Pennsylvania Plaza, New York 10001)

26-28. Symposium on the **Engineering Aspects of Magnetohydrodynamics**, 10th, Cambridge, Mass. (J. Klepeis, Arrangements Committee, Avco Everett Research Lab., 2385 Revere Beach Parkway, Everett, Mass. 02149)

26-28. **George H. Hudson Symp.**, 4th, Plattsburgh, N.Y. (M. H. Tourin, State Univ. College of Arts and Sciences, Plattsburgh 12901)

27. **Biochemistry, Assay and Nutritional Value of Vitamin E**, Rosemont, Ill. (W. Davin, Dawes Labs., Inc., 450 State St., Chicago Heights, Ill. 60411)

27-28. **Technical Writing Inst.**, Lubbock, Tex. (M. Miles, Technical Writing Inst., Dept. of English, Texas Technological College, Lubbock 79409)

27-29. **Geological Soc. of America**, South-Central Section, Lawrence, Kans., "Basement Rocks of the Mid-Continent" and "Paleo-Environmental Implications of Palynology." (W. M. Merrill, Dept. of Geology, Univ. of Kansas, Lawrence 66044)

COLE-PARMER
MICROMETER
DISPENSERS*

Reproducible Volumes
from 0.2 ml to 10 ml

Absolute Accuracy
to 0.02 ml

Reproducibility
of 0.005 ml

Contamination Free.

Liquids come into contact with glass and Teflon† only.



*Patent Applied For

AUTOMATIC REPETITIVE DELIVERY. Dispenser will continuously and precisely deliver all reagents in micrometer-set volumes.

AVAILABLE IN TWO SIZES: Dispensers can be obtained for delivery of volumes up to either 2 ml. or 10 ml.

ACCURATE, EASY TO OPERATE. High visibility micrometer graduations are accurately calibrated and can be quickly set for desired output.

HIGH REPRODUCIBILITY. Precision machined Teflon piston in accurately formed glass cylinder bore ensures consistency of repetitive output.

SELF-PRIMING. Precisely ground glass ball check valves combine self-priming action with highly accurate delivery of reagents.

VERSATILE OUTLET FITTING. Tapered glass Luer joint on dispenser outlet accepts either tubing or hypodermic needles.

TWO STYLES AVAILABLE. Dispenser can be obtained with either 500 ml. flask or with hand held barrel that can be attached by tubing to any reservoir or container.

REAGENTS ARE PROTECTED FROM ATMOSPHERE. Closures are provided with delivery tubes. Flask style dispensers have air vents that can be closed and that accept absorption tubes.



NEW CATALOG

Features over 2500 instruments for Industrial Research, the Health Sciences, Chemistry, Biology and Agriculture. Free on request.

† T.M. DuPont

COLE-PARMER

INSTRUMENT COMPANY

7425 N. Oak Park Ave. Chicago, Ill. 60648
(312) 647-0272

Circle No. 76 on Readers' Service Card

28-29. American Otolological Soc., Inc., New Orleans, La. (W. H. Bradley, 1100 E. Genesee St., Syracuse, N.Y.)

28-30. American Psychosomatic Soc., Inc., 26th, Cincinnati, Ohio. (H. Weiner, 265 Nassau Rd., Roosevelt, N.Y. 11575)

28-2. Seminar of the American Cancer Soc. for Science Writers, 11th, New Orleans, La. (J. Clark, American Cancer Soc., 219 E. 42 St., New York 10017)

30-2. American Orthopsychiatric Assoc., New York, N.Y. (M. F. Langer, Room 1313, 1790 Broadway, New York 10019)

31. American Astronomical Soc., Honolulu, Hawaii. (G. C. McVittie, Univ. of Illinois Observatory, Urbana 61801)

31-2. **Advances in Water Quality Improvement**—Physical and Chemical Processes, Austin, Tex. (Center for Research in Water Resources, Univ. of Texas, Rt. 4, Box 189, Austin 78757)

31-2. **Metals Engineering Conf.**, Washington, D.C. (R. J. Cepluch, Hartford Steam Boiler Inspection and Insurance Co., 56 Prospect St., Hartford, Conn. 06102)

31-2. **Education for the Peaceful Uses of Nuclear Explosives**, Tucson, Ariz. (L. E. Weaver, Dept. of Nuclear Engineering, Univ. of Arizona, Tucson 85721)

31-2. American Assoc. of Thoracic Surgery, San Francisco, Calif. (T. B. Ferguson, Suite 311, 7730 Carondelet Ave., St. Louis, Mo. 63110)

April

1. Arkansas Acad. of Science, Fayetteville, Ark. (G. E. Templeton, Dept. of Plant Pathology, Univ. of Arkansas, Fayetteville 72701)

1-2. **Advanced Techniques in Real-Time Simulation**, Philadelphia, Pa. (University City Science Center, Science Center Bldg. No. 1, 3401 Market St., Philadelphia 19104)

1-3. **Numerical Control Soc.**, 6th, Cincinnati, Ohio. (P. Senkiw, Advanced Computer Systems, Inc., 2185 S. Dixie Ave., Dayton, Ohio 45409)

1-4. American Assoc. of Anatomists, Boston, Mass. (R. T. Woodburne, Dept. of Anatomy, Univ. of Michigan, East Medical Bldg., Ann Arbor 48104)

2. **Oral Cancer Symp.**, 7th, Poughkeepsie, N.Y. (Sister M. A. Elizabeth, Poughkeepsie, N. Y.)

2-4. **Picture Bandwidth Compression**, Cambridge, Mass. (E. E. Witchi, Boston Section, IEEE, 31 Channing St., Newton, Mass. 02158)

3-4. American Soc. for Engineering Education, Fayetteville, Ark. (E. H. Wright, The Society, 2100 Pennsylvania Ave., NW, Washington, D.C. 20037)

3-5. Southern Soc. for Philosophy and Psychology, Miami, Fla. (D. Browning, Dept. of Philosophy, Univ. of Miami, Coral Gables, Fla.)

3-5. National Conf. on Schizophrenia, Topeka, Kan. (Dept. of Education, Menninger Foundation, Box 829, Topeka 66601)

7-9. **Operations Research Seminar**, Cleveland, Ohio. (Office of Public Relations, Case Western Reserve Univ., University Circle, Cleveland 44106)

7-11. **Public Health Aspects of Peaceful Uses of Nuclear Explosives**, Las Vegas, Nev. (Symp. Committee, Southwestern

50 EXTRA
MAN-HOURS
for only

\$18.50*
per month!



Pat. #3,316,925

CRC LABWASHER®

brings your lab advantages of automated glassware washing and drying; unequaled convenience; savings of valuable man-hours and significant reduction of labware breakage.

For only \$18.50 per month*, the CRC Labwasher can free your lab forever from the extravagance of hand washing labware. It works for you faithfully even during lunch or after the close of day... has clean glassware ready and waiting when needed!

Check your glassware washing problems against actual, in-the-field "Usage Reports". Request Bulletin No. A 93

*Average cost of owning and operating a CRC Labwasher (over a 5 year period during which the unit was completely amortized) based on a survey of 239 Labwasher equipped laboratories.

A-5691

THE
CHEMICAL
RUBBER
CO.

Labwasher Division
Cranwood Parkway, Cleveland, Ohio 44128

Circle No. 93 on Readers' Service Card

Radiological Health Lab., P.O. Box 15027, Las Vegas 89114)

8-9. **High Performance Composites**, 4th symp., St. Louis, Mo. (G. L. Esterson, Box 1048, Washington Univ., St. Louis 63130)

8-11. **Acoustical Soc. of America**, 71st, Philadelphia, Pa. (B. Goodfriend, 335 E. 45 St., New York 10017)

9-10. **American Assoc. of Planned Parenthood Physicians**, 7th, San Francisco, Calif. (G. C. Denniston, The Association, 515 Madison Ave., New York 10022)

9-11. **Textile Research Inst.**, 39th, New York, N.Y. (P.O. Box 625, Princeton, N.J.)

9-12. **Geological Soc. of America**, southeastern section, Columbia, S.C. (D. J. Colquhoun, Dept. of Geology, Univ. of South Carolina, Columbia 29208)

10. **Health Conf. on Diet, Exercise, and Cardiovascular Disease**, Philadelphia, Pa. (R. L. Kunes, Heart Assoc. of Southeastern Pennsylvania, 318 S. 19 St., Philadelphia)

10-12. **Population Assoc. of America**, Atlantic City, N.J. (A. L. Ferriss, Russell Sage Foundation, 1755 Massachusetts Ave., NW, Washington, D.C. 20036)

10-16. **American Leprosy Missions**, 10th PHS seminar, Carville, La. (American Leprosy Missions, 297 Park Ave. South, New York 10010)

11-12. **American Soc. for Engineering Education** (North Central Section mtg.), Windsor, Ont., Canada. (E. H. Wright, The Society, 2100 Pennsylvania Ave., NW, Washington, D.C. 20037)

12. **New Jersey Acad. of Science**, East Orange. (F. F. Katz, Seton Hall Univ., South Orange, N.J. 07079)

12-16. **American Soc. of Abdominal Surgeons**, Las Vegas, Nev. (B. F. Alfano, 675 Main St., Melrose, Mass. 02176)

12-13. **National Guild of Catholic Psychiatrists**, Washington, D.C. (P. A. Santucci, 4962 Hampden Lane, Bethesda, Md. 20014)

12-13. **Histochemical Soc.**, 20th, Atlantic City, N.J. (G. M. Lehrer, Div. of Neurochemistry, Mount Sinai Medical School, 11 E. 100 St., New York 10029)

13-16. **Plant Engineering and Maintenance**, 12th conf., Pittsburgh, Pa. (B. J. Cross, Lederle Labs., Pearl River, N.Y. 10965)

13-17. **American Assoc. of Cereal Chemists**, 54th, Chicago, Ill. (R. Tarleton, 1955 University Ave., St. Paul, Minn. 55104)

13-17. **Pacific Coast Oto-Ophthalmological Soc.**, San Francisco, Calif. (F. A. Sooy, Dept. of Otolaryngology, Univ. of California Medical Center, San Francisco 94122)

13-18. **American Socs. for Experimental Biology**, Atlantic City, N.J. (J. F. A. McManus, FASEB, 9650 Rockville Pike, Bethesda, Md. 20014)

13-18. **American Soc. for Experimental Pathology**, Atlantic City, N.J. (R. E. Knott, 9650 Rockville Pike, Bethesda, Md. 20014)

13-18. **American Inst. of Nutrition**, Atlantic City, N.J. (J. Waddell, 9650 Rockville Pike, Bethesda, Md. 20014)

13-18. **American Soc. for Pharmacology and Experimental Therapeutics**, Inc., Atlantic City, N.J. (E. B. Cook, Executive Officer, The Society, 9650 Rockville Pike, Bethesda, Md. 20014)

We're not name droppers.

One of the big reasons we've become one of the best kept secrets in the field of custom manufacturing is that we know how to keep our mouth shut about what we do. We're not unknown, though. Of the 500 largest U.S. corporations listed by Fortune magazine, 100 are in chemical manufacturing. 75 of these 100 are Arapahoe customers and we do custom work for 30. This is pretty good company to keep.

Join the group and see for yourself how we can help solve your special needs—from pilot quantities to a million pounds or more.

For more information on how you can benefit from Arapahoe process development imagination and proved production capability, contact:


ARAPAHOE
CHEMICALS

DIVISION OF SYNTEX CORPORATION
2855 WALNUT ST., BOULDER, COLORADO 80302

OSMOTIC CONCENTRATION...

an extremely valuable
concentrative index for
biological solutions

The concentration of particles in solution can be measured in a number of ways; for many applications, however, osmotic concentration is superior to other common indices.

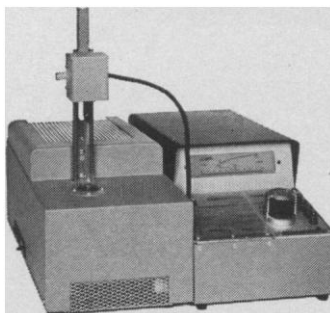
PARTICLE PARAMETERS WHICH AFFECT
VARIOUS CONCENTRATIVE INDICES

CONCENTRATIVE INDEX	NUMBER	SIZE	SHAPE	CHARGE	UNIONIZING PARTICLES	UP/DOWN
Osmotic Concentration	✓	✓	✓	✓	✓	✓
Specific Gravity	✓	✓	✓	✓	✓	✓
Refractive Index	✓	✓	✓	✓	✓	✓
Conductivity	✓	✓	✓	✓	✓	✓
Viscosity	✓	✓	✓	✓	✓	✓
Turbidity	✓	✓	✓	✓	✓	✓

Useful In: Electrolyte Balance, Fluid Balance, Renal Function, Fixatives, Dialysis, Total Body Water, etc.

THE ADVANCED OSMOMETER...

The ideal instrument
for measuring osmolality



- Fast • Easy • Rugged
- Reliable • Sensitive
- Specific • Modular

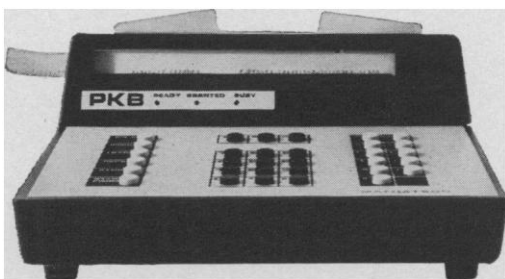
Let us send you FREE pamphlets: "A Physical Chemistry Review — Measuring The Concentration of Solutions", a bibliography, applications information, and a brochure on Advanced Osmometers. Write or call collect today.



**ADVANCED
INSTRUMENTS, INC.**

40 Kenneth Street / 617 DEcatur 2-8200
Newton Highlands, Massachusetts, 02161
SEE US AT BOOTHS M22 and M23 F.A.S.E.B. MEETING
Circle No. 91 on Readers' Service Card

POWERFUL



MATHATRON PKB HAS GREATER MATHEMATICAL CAPABILITY
THAN ANY OTHER STANDARD ELECTRONIC CALCULATOR

ALGEBRAIC FUNCTIONS

+ -
× ÷
() 1/2

LOGARITHMIC FUNCTIONS

N^x
Log e
e^x

TRIGONOMETRIC FUNCTIONS

Sin θ
Cos θ
Tan θ
Sin⁻¹
Tan⁻¹

STATISTICAL FUNCTIONS

ΣX, Σ(X²), N
ΣX, ΣY, Σ(X²), Σ(Y²), Σ(X·Y)
X̄, S_x, S(X²), Coeff. of Variation,
Standard Error X
Ȳ, S_y, S(Y²), Coeff. of Variation,
Standard Error Y
t Test, Degrees of Freedom,
Standard Error
Coefficient of Correlation,
Least Squares Regression A&B
Various Chi-Square Statistics

In addition, Mathatron PKB has an exclusive serial strip printer, programmable memory, full-floating decimal point, one-hundred column number range, multiple keyboards that connect to the central computing station through your telephone or direct wiring, and the amazing Math-writer keyboard that allows you to enter problems just as you would write them.

Get the full story, call Wright Line in all principal cities, or write today for illustrated brochure.

MATHATRON PKB



160 GOLD STAR BLVD., WORCESTER, MASS. 01606 • A DIVISION OF BARRY WRIGHT CORPORATION

Circle No. 84 on Readers' Service Card

14-16. American Inst. of Mining, Metallurgical and Petroleum Engineers, Inc., 52nd, Toronto, Ont., Canada. (The Society, 345 E. 47 St., New York 10017)

14-16. Structures, Structural Dynamics, and Materials Conf., 10th, New Orleans, La. (A. H. Hausrath, Bldg. 520, Room 144, TRW Systems, P.O. Box 1310, Norton AFB, Calif. 92402)

14-17. American Cleft Palate Assoc., Houston, Tex. (K. R. Bzoch, Dept. of Communicative Disorders, Univ. of Florida, Gainesville 32601)

14-17. American Assoc. of Petroleum Geologists, 54th, Dallas, Tex. (The Association, Box 979, Tulsa, Okla.)

14-18. American Soc. of Biological Chemists, Inc., Atlantic City, N.J. (Executive Officer, The Society, 9650 Rockville Pike, Bethesda, Md. 20014)

14-18. American Assoc. of Immunologists, Atlantic City, N.J. (Secretary-Treasurer, The Association, 9650 Rockville Pike, Bethesda, Md. 20014)

14-18. American Physiological Soc., Atlantic City, N.J. (R. G. Daggs, The Society, 9650 Rockville Pike, Bethesda, Md. 20014)

14-18. Federation of American Socs. for Experimental Biology, 53rd, Atlantic City, N.J. (Convention Manager, 9650 Rockville Pike, Bethesda, Md. 20014)

15. Labeling of Blood Typing Sera, New York, N.Y. (A. S. Wiener, Office of the Chief Medical Examiner of New York City, 520 First Ave., New York 10016)

16-17. American Inst. of Aeronautics and Astronautics (structural dynamics and aeroelasticity conf.), New Orleans, La. (H. Runyan, Dynamics Loads Div., NASA Langley Research Center, Langley Field, Va. 23365)

16-18. American Soc. of Neuroradiology, Cleveland, Ohio. (A. E. Zimmer, Danbury Hospital, Danbury, Conn. 06810)

16-18. Institute of Electrical and Electronics Engineers (geoscience electronics symp.), Washington, D.C. (M. E. Ringenbach, Equipment Development Lab., Room 201, Gramax Bldg., 8060 13 St., Silver Spring, Md. 20901)

16-18. American Soc. for Engineering Education, southeastern section mtg., Coral Gables, Fla. (E. H. Wright, The Society, 2100 Pennsylvania Ave., NW, Washington, D.C. 20037)

16-26. Solid State Chemistry Advanced Study Inst., Scottsdale, Ariz. (L. Eyring and M. O'Keeffe, Dept. of Chemistry, Arizona State University, Tempe 85281)

17-18. Fiber Soc., Raleigh, N.C. (L. Rebenfeld, Box 625, Princeton, N.J.)

17-18. American Assoc. of Railway Surgeons, Chicago, Ill. (C. Y. Werelius, 5800 Stony Island Ave., Chicago 60637)

17-19. Orthopaedic Symp., 5th, Houston, Tex. (W. M. Granberry, 6624 Fannin St., Houston 77025)

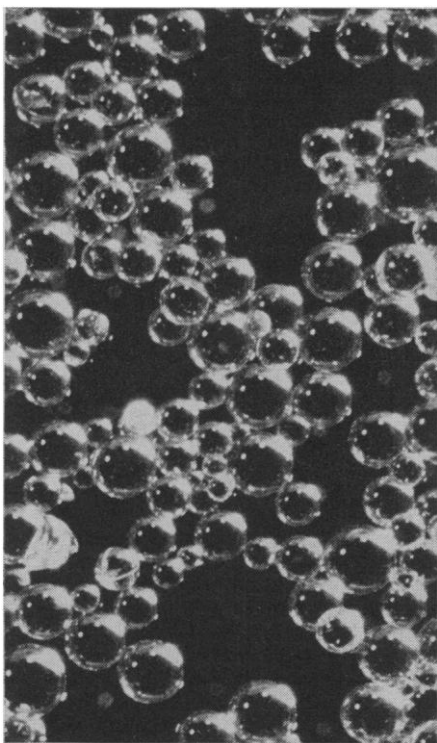
17-19. Association of Southeastern Biologists, Memphis, Tenn. (C. D. Brown, Memphis State Univ., Memphis)

17-20. Southwestern Assoc. of Naturalists, Tempe, Ariz. (M. J. Fouquette, Jr., Dept. of Zoology, Arizona State Univ., Tempe 85281)

17-22. American Dermatological Assoc., Inc., Scottsdale, Ariz. (R. R. Kierland, % Mayo Clinic, Rochester, Minn. 55901)

18-19. Iowa Acad. of Sciences, Cedar

How do you get
the highest
resolution
consistently
in ion exchange
chromatography?



Only by using Bio-Rad AG® resins!

BIO-RAD AG resins represent the highest level of purity available for ion exchange chromatography.

AG resins are exhaustively purified and sized to specific ranges to assure sharp resolution and highest reproducibility. For example, the maximum iron content in AG-1 anion resin is 0.00005%.

For the full story on BIO-RAD and its role in ion exchange technology—including valuable data on Bio-Rex resins, specialty resins, resin selection, regeneration and applications—send for our general catalog, Price List T.

BIO-RAD Laboratories

Dept. S-4 • 32nd and Griffin Ave.
Richmond, California 94804

Circle No. 92 on Readers' Service Card

Falls, Iowa. (R. Hanson, Dept. of Science, Univ. of Northern Iowa, Cedar Falls 50613)

18-20. American Soc. of **Internal Medicine**, Chicago, Ill. (A. V. Whitehall, 3410 Geary Blvd., San Francisco, Calif. 94118)

20-23. Institute of **Environmental Sciences**, 15th, Anaheim, Calif. (Technical Program Committee, The Institute, 940 E. Northwest Highway, Mount Prospect, Ill. 60056)

20-23. West Virginia Acad. of **Ophthalmology and Otolaryngology**, Greenbrier. (J. E. Blaydes, Jr., 107 Federal St., Bluefield, W.Va.)

20-23. Assoc. for **Research in Ophthalmology**, Sarasota, Fla. (H. E. Kaufman, Office of Secretary-Treasurer, Dept. of Ophthalmology, Univ. of Florida Medical College, Gainesville 32601)

20-24. American **Oil Chemists' Soc.**, San Francisco, Calif. (C. H. Hauber, The Society, 35 E. Wacker Drive, Chicago, Ill. 60601)

20-25. Society of **Motion Picture and Television Engineers**, 105th, Miami Beach, Fla. (Executive Secretary, 9 E. 41 St., New York 10017)

21-22. American Soc. for **Artificial Internal Organs**, Atlantic City, N.J. (E. F. Bernstein, Dept. of Surgery, Univ. of Minnesota Medical School, Minneapolis 55455)

21-22. **Temperature Measurements Soc.**, 6th, Hawthorne, Calif. (C. L. Vaughn, Paper Selection Committee, % The Society, P.O. Box 156, Palos Verdes Estates, Calif. 90274)

21-23. **Effective Use of Computers in the Nuclear Industry**, Knoxville, Tenn. (B. F. Maskewitz, Oak Ridge Natl. Lab., P.O. Box X, Oak Ridge, Tenn. 37830)

21-24. American **Industrial Health Conf.**, Houston, Tex. (American Industrial Health Conf., 55 E. Washington St., Chicago, Ill. 60602)

21-25. **Astrodynamics and Related Planetary Sciences**, Washington, D.C. (J. W. Siry, NASA Goddard Space Flight Center, Code 550, Greenbelt, Md. 20771)

21-25. American College of **Physicians**, 50th, Chicago, Ill. (E. C. Rosenow, Jr., 4200 Pine St., Philadelphia, Pa.)

21-25. **Solid State Chemistry Conf.**, 2nd, Scottsdale, Ariz. (L. Eyring and M. O'Keeffe, Dept. of Chemistry, Arizona State University, Tempe 85281)

21-26. American Acad. of **Neurology**, Washington, D.C. (S. A. Nelson, 4005 W. 65 St., Minneapolis, Minn. 55435)

22-23. National **Relay Conf.**, 17th, Stillwater, Okla. (D. D. Lingelbach, School of Electrical Engineering, Oklahoma State Univ., Stillwater 74074)

22-24. **Telemetry Conf.**, Washington, D.C. (R. W. Rochelle, NASA Goddard Space Flight Center, Code 710, Greenbelt, Md. 20771)

22-25. American College **Health Assoc.**, Oklahoma City, Okla. (J. W. Dilley, 2807 Central Ave., Evanston, Ill. 60201)

22-25. National **Pollution Conf.**, Houston, Tex. (The Conference, 4710 Greeley St., Houston 77006)

23-24. **Electric Process Heating in Industry**, Inst. of Electrical and Electronics Engineers, Philadelphia, Pa. (G. Bobart, Westinghouse Electric Corp., Box 300, Sykesville, Md. 21784)

23-25. Institute of **Electrical and Electronics Engineers Conv.**, San Antonio,



Temperature Controlled

Liquid Systems

-70°C to +300°C

- Circulators
- Bath Coolers
- Baths
- Heat Exchangers
- -59°C Window Bath
- -70°C Circulator
- Temperature Programmers

Catalog and prices
on request.

If you have a temperature
control problem, check
us first.

NESLAB INSTRUMENTS, INC.

871 Islington St.
Portsmouth, N.H. 03801

Circle No. 99 on Readers' Service Card →



**Instant
Isotopes
for Classroom
Use!**

**Union Carbide
MINIGENERATOR™**

CESIUM-137/BARIUM-137m . . . TIN-113/INDIUM-113m

- Fast
- Safe
- Convenient
- Economical
- Long Life
- NDEA Approved

Now . . . with MINIGENERATOR . . . you can have a safe, convenient classroom source of radioactive isotopes for use in simple experiments to demonstrate basic principles of nucleonics . . . experiments which can be performed by high school students with a minimum of laboratory equipment.

MINIGENERATOR is an *inexpensive* source of radioisotopes. It can deliver up to 1000 times its loading during its long lifetime. It can be eluted repeatedly, whenever desired, during a given laboratory period, virtually eliminating the supply and demand problems associated with other commercially available radioisotopes.

MINIGENERATOR may be used to demonstrate basic principles of radiation detection and measurement, to show decay and build-up properties of radioactive materials, to serve as tracers in ion studies, and to demonstrate some common industrial applications.

Two models are available: (1) Cesium-137/Barium-137m . . . useful as an educational aid because of the contrast between half-life of parent and that of daughter, and (2) Tin-113/Indium-113m . . . ideal for experiments requiring an isotope with much longer half-life.

MINIGENERATOR is well within the means of limited high school budgets . . . can be stored and handled easily and safely . . . is available for continued use throughout the school year . . . can be used to perform a wide variety of experiments.

For complete information, write . . . W. H. Curtin & Company, P. O. Box 1546, Houston, Texas 77001.

MINIGENERATOR is a trademark of Union Carbide Corporation



W. H. CURTIN & COMPANY

SCIENTIFIC APPARATUS • CHEMICALS • LABORATORY FURNITURE
HOUSTON • TULSA • LOS ANGELES • NEW ORLEANS • ATLANTA • SAN FRANCISCO
DALLAS • JACKSONVILLE • WASHINGTON • WAYNE, N. J. • MEXICO CITY • MONTERREY
GEORGE T. WALKER & CO. DIVISION • MINNEAPOLIS, MINNESOTA

1116

Circle No. 31 on Readers' Service Card

Tex. (W. H. Hartwig, Dept. of Electrical Engineering, Engineering Science Bldg. 439, University of Texas, Austin 78712)

23-25. **Nondestructive Evaluation of Components and Materials in Aerospace, Weapons Systems, and Nuclear Applications**, San Antonio, Tex. (C. E. Lautzenheiser, Southwest Research Inst., 8500 Culebra Rd., San Antonio 78228)

24-26. American Acad. of **Physical Medicine and Rehabilitation**, Chicago, Ill. (C. C. Herold, 30 N. Michigan Ave., Chicago 60602)

24-26. New York **Roentgen Soc.**, New York, N.Y. (S. H. Madell, 1 E. 82 St., New York 10028)

24-26. Illinois State Acad. of **Science**, Decatur, Ill. (K. Harmet, Dept. of Biology, Northern Illinois Univ., DeKalb 60115)

24-26. Ohio Acad. of **Science**, Delaware. (J. H. Melvin, Ohio Acad. of Science, 505 King Ave., Columbus 43210)

24-26. Annual **Wildflower Pilgrimage**, 19th, Gatlinburg, Tenn. (Gatlinburg Chamber of Commerce, Box 527, Gatlinburg, Tenn. 37738 or E. E. C. Clebsch, Dept. of Botany, Univ. of Tennessee, Knoxville 37916)

24-27. Association of **Clinical Scientists**, Mobile, Ala. (R. P. MacFate, 125 N. Rutledge St., Pentwater, Mich. 49449)

25-26. American Soc. for **Engineering Education**, Rocky Mountain Section mtg., Logan, Utah. (E. H. Wright, The Society, 2100 Pennsylvania Ave., NW, Washington, D.C. 20037)

25-26. American Society of **Group Psychotherapy and Psychodrama**, New York, N.Y. (A. Manzoello, P.O. Box 311, Beacon, N.Y. 12508)

25-26. Nebraska Acad. of **Science**, Lincoln. (C. B. Schultz, 101 Morrill Hall, University Museum, Univ. of Nebraska, Lincoln 68508)

25-26. South Dakota Acad. of **Science**, Vermillion. (T. Van Bruggen, Dept. of Botany, Univ. of South Dakota, Vermillion 57069)

26. American Soc. for **Engineering Education**, Illinois-Indiana Section Mtg., Terre Haute, Ind. (E. H. Wright, The Society, 2100 Pennsylvania Ave., NW, Washington, D.C. 20037)

26-27. **Eye Bank Assoc. of America**, New Orleans, La. (W. Clark, 211 S. Saratoga St., New Orleans 70112)

27-30. American Soc. of **Maxillofacial Surgeons**, San Francisco, Calif. (D. Goularian, Jr., 116 E. 68 St., New York 10021)

27-30. **Southwestern and Rocky Mountain Div. of AAAS**, Colorado Springs, Colo. (M. G. Anderson, Dept. of Biology, New Mexico State Univ., Las Cruces 88001)

28. National **Cystic Fibrosis Research Foundation**, Atlantic City, N.J. (W. H. Boyer, 202 E. 44 St., New York 10017)

28-29. **Photo-Optical Techniques in Simulators**, South Fallsburgh, N.Y. (Photo-Optical Techniques in Simulators Seminar Committee, % SPIE Natl. Office, P.O. Box 288, Redondo Beach, Calif. 90277)

28-30. American Inst. of **Aeronautics and Astronautics**, Cincinnati, Ohio. (J. Lukasiewicz, ARO, Inc., Arnold Engineering Development Center, Arnold Air Force Station, Tenn. 37389)

28-30. Association of **Iron and Steel Engineers**, Detroit, Mich. (Managing Direc-

SCIENCE, VOL. 163

tor, The Association, 1010 Empire Bldg., Pittsburgh, Pa.)

28-30. American Radium Soc., Philadelphia, Pa. (J. V. Blady, 2201 Benjamin Franklin Parkway, Philadelphia 19130)

28-30. American Vacuum Soc., Los Alamos, N.M. (D. G. Schreiner, New Mexico Section, AVS, P.O. Box 11451, Albuquerque 87112)

28-30. Water and Air Conf., 6th, Assoc. of the Pulp and Paper Industry, Jacksonville, Fla. (H. O. Teeple, 360 Lexington Ave., New York 10017)

28-1. American College of Obstetricians and Gynecologists, Bal Harbour, Fla. (M. Newton, 79 W. Monroe St., Chicago, Ill. 60603)

28-1. American Physical Soc., Washington, D.C. (W. W. Havens, Jr., The Society, 335 E. 45 St., New York 10017)

29. American Federation for Clinical Research, Atlantic City, N.J. (The Federation, 2000 P St., NW, Washington, D.C. 20036)

29. Cystic Fibrosis Club, 10th, Atlantic City, N.J. (W. W. Waring, Tulane Univ. Medical School, 1430 Tulane Ave., New Orleans, La. 70112)

29. American Soc. of Therapeutic Radiologists, Philadelphia, Pa. (C. R. Bogardus, Jr., Univ. of Oklahoma Medical Center, Oklahoma City 73114)

29-1. Society of Aerospace Material and Process Engineering, Los Angeles, Calif. (Mail Station D-133, Hughes Aircraft Co., Centinela Ave. and Teale St., Culver City, Calif. 90230)

29-2. American Chemical Soc. (Div. of Rubber Chemistry), Los Angeles, Calif. (G. G. Winspear, R. T. Vanderbilt Co., Inc., 230 Park Ave., New York 10017)

29-3. Student American Medical Assoc., Chicago, Ill. (C. Hewitt, 2635 Flossmoor Road, Flossmoor, Ill. 60422)

30-2. Chemical Marketing Research Assoc., New York. (R. H. Mattson, Glidden-Durkee, Div. of SCM Corp., 900 Union Commerce Bldg., Cleveland, Ohio 44115)

30-2. Electronic Components Conf., Washington, D.C. (J. A. O'Connell, Electronic Components Conf., ITT Headquarters, 320 Park Ave., New York 10022)

30-2. American Surgical Assoc., Cincinnati, Ohio. (C. R. Hanlon, 1325 S. Grand Blvd., St. Louis, Mo. 63104)

30-3. Midwest Anesthesiology Conf., Chicago, Ill. (A. P. Winnie, Illinois Soc. of Anesthesiologists, 1825 W. Harrison St., Chicago 60612)

30-3. American Assoc. of Plastic Surgeons, San Francisco, Calif. (R. M. McCormack, 260 Crittenden Blvd., Rochester, N.Y. 14620)

30-4. Continual Education of the American Acad. of Oral Medicine, 23rd, San Juan, Puerto Rico. (W. M. Greenhut, 124 E. 84 St., New York 10028)

International and Foreign Meetings

April

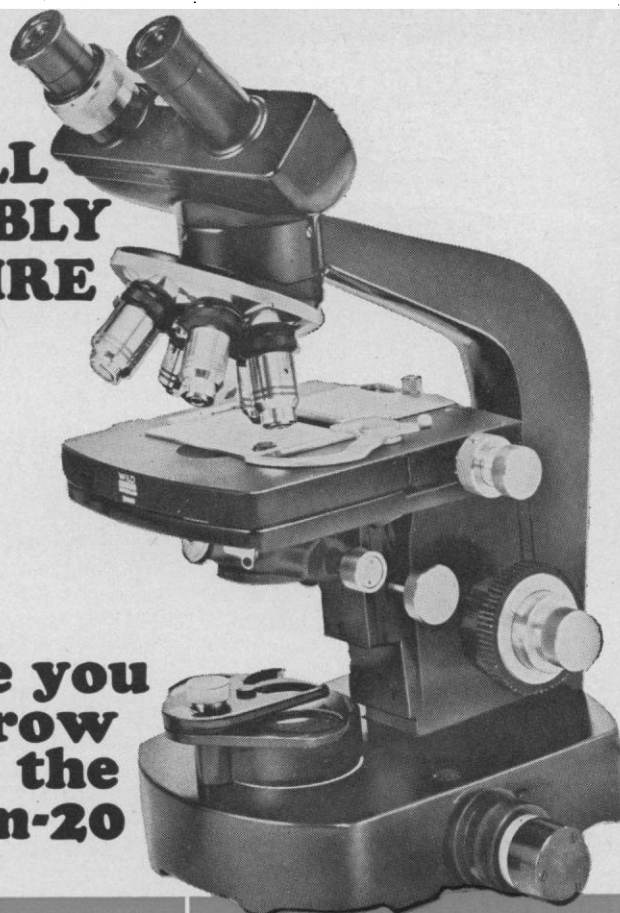
7-11. Federation of European Biochemical Societies, 6th, Madrid, Spain. (Secretariat, Centro de Investigaciones Biologicas, Velazquez, 144, Madrid 6)

8-11. International Symp. on Laboratory Animals, Washington, D.C. (B. F. Hill,

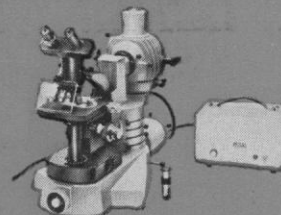
7 MARCH 1969

YOU'LL PROBABLY RETIRE

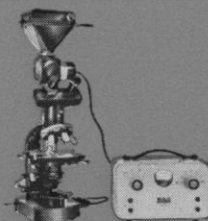
before you outgrow the Wild m-20



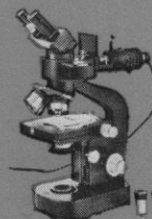
With Binocular Camera Lucida, the first of its kind; up to 1:5 enlargement ratio.



With Dual Illuminator for Fluorescent Antibody Studies featuring Darkfield and Phase Contrast Fluorescence.



With Photo Automat—35 millimeter and other film sizes interchangeable.



With EPI Attachment for Incident Lighting, Brightfield and Darkfield.

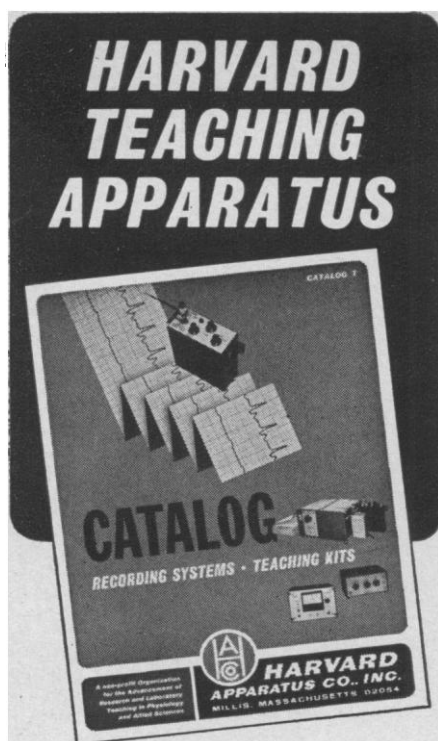
Name your observation method. Your illumination requirements. Today, tomorrow, or any day. The Wild M-20 grows with you and stays with you in every field of optical microscopic research... with every useful accessory and attachment at your command when you need them. A beautiful instrument of unexcelled performance, backed by full factory service and maintenance. WRITE FOR BROCHURE M-20.

WILD
HEERBRUGG

WILD HEERBRUGG INSTRUMENTS, INC.
FARMINGDALE, NEW YORK 11735

WILD OF CANADA, LTD., 881 LADY ELLEN PLACE, OTTAWA 3, ONTARIO
WILD DE MEXICO, SA, LONDRES 256, MEXICO 6, D.F.

Circle No. 27 on Readers' Service Card



For Student Laboratories in

- PHYSIOLOGY
- BIOLOGY
- ZOOLOGY
- PSYCHOLOGY
- PHYSICAL EDUCATION

This Catalog features a complete range of apparatus for recording such phenomena as breathing patterns, pulse and fatigue in human subjects; heart and nerve-muscle contraction in laboratory animals. Includes modular recording systems for mechanical and electronic monitoring as well as traditional kymograph equipment.

All equipment is ruggedly constructed to withstand student use and is identical to that used in medical schools. The apparatus is listed individually and in convenient kit form. Versatility of equipment encourages student and teacher alike to plan and execute a wide variety of experiments and demonstrations.

**HARVARD
APPARATUS**

Dept. A-25, P.O. Box 24
Millis, Mass. 02054

Please send free Catalog T.

NAME _____

DEPARTMENT _____

INSTITUTION _____

CITY _____

STATE _____

ZIP _____

Circle No. 86 on Readers' Service Card

Charles River Breeding Labs., Inc., Wilmington, Mass.)

9-12. **British Medical Assoc.**, clinical mtg., Valletta, Malta. (British Medical Assoc. House, Tavistock Sq., London, W.C.1, England)

14-17. **Cleft Palate**, intern. congr., Houston, Tex. (B. J. McWilliams, Cleft Palate Research Center, Univ. of Pittsburgh, 313 Salk Hall, Pittsburgh, Pa. 15213)

15-17. **Civil Engineering Problems of the South Wales Valleys**, Cardiff, England. (Institution of Civil Engineers, Great George St., London, S.W.1, England)

15-18. **International Magnetism Conf.**, Amsterdam, Netherlands. (T. Holtwijk, Philips Research Labs., Eindhoven, Netherlands)

17-18. **British Inst. of Radiology**, London, England. (British Inst. of Radiology, 32 Welbeck St., London, W.1)

19-27. **Yugoslav Seminar and Exhibition of Regulation, Measuring and Automation-Jurema 1969**, 14th, Zagreb. (Jurema, Unska U1, P.O.B. 123, Zagreb)

21-23. **Canadian Inst. of Mining and Metallurgy**, 71st, Montreal, Canada. (Executive Director, The Institute, Suite 906, 1117 St. Catherine St. W., Montreal 2)

21-25. **Switching Techniques for Telecommunication Networks**, London, England. (Conference Dept., Institution of Electrical Engineers, London, W.C.2)

21-26. **Canadian Pulp and Paper Assoc.**, 10th, Vancouver, B.C. (W. K. Voss, Ontario Paper Co. Ltd., Thorold, Ont.)

22-25. **Cotton Textile Research**, 1st intern. symp., Paris, France. (Institut Textile de France, 23 rue des Abondances, 92, Boulogne, France)

22-29. **Hydrology of Deltas**, intern. symp., Bucharest, Rumania. (A. I. Johnson, Water Resources Div., U.S. Geological Survey, Denver, Colo. 80225)

28-2. **Symposium on Radiation-Induced Carcinogenesis**, Athens, Greece. (R. N. Mukherjee, Unit of Radiation Biology, Intern. Atomic Energy Agency, Karntner Ring 11-13, A-1010 Vienna, Austria)

May

5-8. **Instrumentation in Aerospace Simulation Facilities**, 3rd intern. congr., Farmingdale, N.Y. (C. R. Spitzer, MS-236, NASA Langley Research Center, Hampton, Va. 23365)

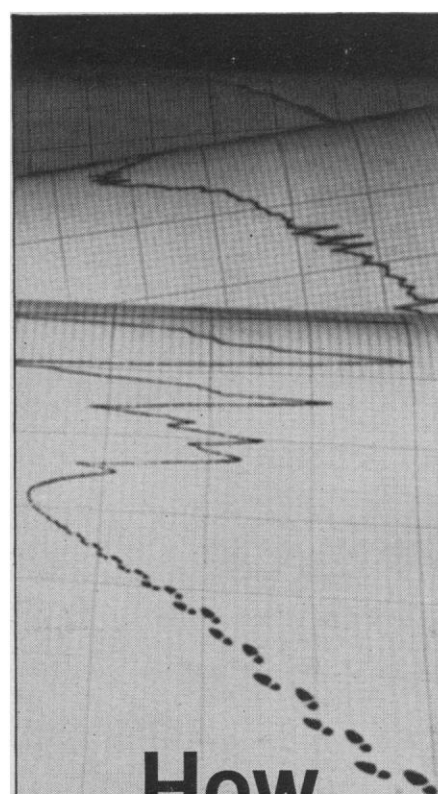
5-8. **International Microwave Symp.**, Dallas, Tex. (J. B. Horton, MS 905, Texas Instrument Co., Box 5012, Dallas 75222)

5-9. **Commonwealth Mining and Metallurgical Congr.**, 9th, London, England. (Congress Secretary, Commonwealth Council of Mining and Metallurgical Institutions, 44 Portland Pl., London, W.1)

6-8. **Nuclear Electronics Symp.**, Ispra, Italy. (L. Stanchi, C.C.R. Euratom, 21020 Ispra)

6-8. **Power Thyristors and Their Applications**, London, England. (Conference Dept., Institution of Electrical Engineers, Savoy Pl., London, W.C.2)

6-8. **Radiosensitizing and Radioprotective Drugs**, 2nd intern. symp., Rome, Italy. (H. Moroson, Sloan-Kettering Inst. for Cancer Research, Donald S. Walker Lab., 145 Boston Post Rd., Rye, N.Y.)



How
to
track
down
a
free
radical

Capture it on paper with a Magnion EPR (ESR) spectrometer. You'll have the elusive electron under close scrutiny when other instruments can barely find a trace. Evidence of Magnion's unsurpassed performance already exists. Consider the extensive experience we've had with many types of electromagnetic systems and instruments. Consider also our capabilities for practical application of advanced technology and our deep commitment to quality and reliability.

Why not investigate?



VENTRON

MAGNION DIVISION

184 Middlesex Turnpike
Burlington, Mass. 01803
Tel: (617) 272-5200

Circle No. 89 on Readers' Service Card