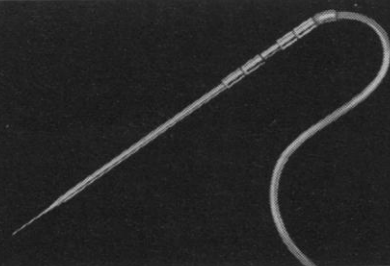


# a new micro electrode

for biomedical  
stimulation  
and recording



the **microtrode** <sup>TM</sup>

Composite structure of thin film metal layer bonded to drawn glass probes

- Reproducible performance
- Infinite shelf life
- Low resistance
- One micron tip diameter
- Available uninsulated or with resin insulation
- Gold plated pin connector with mating cable assembly
- May be cleaned and reused
- Special structures quoted on request

The Microtrode, connector and cable assembly under \$10.00.

**TG**

**TRANSIDYNE  
GENERAL  
CORPORATION**

462 Wagner Road • Ann Arbor, Michigan 48103

Dom. & For. Pat. Pend.

SC1168

Circle No. 78 on Readers' Service Card

social response need not imply mere response-suppression. It may imply constructive rearrangement of social conditions in order to decrease the probability of destructive responses. Like response-suppression, this is also "control," but not of Anderson's much feared Orwellian variety. . . .

There seems to be little relation between the assumption that violence is undesirable and advocacy of suppression of dissent. (Anderson notwithstanding, there are also important differences between campus dissent and campus violence.) Violence is inherently undesirable when there exist alternative ways of attaining specific socioeducational goals. Whether these ways exist or not might itself prove to be a redundant question should it turn out that what the campus revolutionary really lacks is patience, as opposed to hope.

D. A. BEGELMAN

Fairfield Hills Hospital,  
Newtown, Connecticut 06470

## Protesting Mathematicians

I was amazed to read the News and Comment section (20 Sept., p. 1225) "Defense research: Questions for Vietnam dissenters" about the mathematicians who signed an announcement in the Notices of the American Mathematical Society which read in part: "We urge you [mathematicians] to regard yourselves as responsible for the uses to which your talents are put. We believe this responsibility forbids putting mathematics in the service of this cruel war."

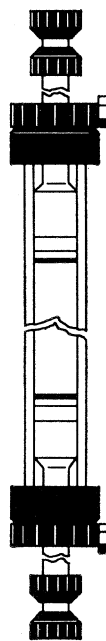
The first statement is unexceptionable; the second, as indicated, is a matter of opinion. What amazes me is that signers of the announcement are still working on their defense research contracts, not because they have not been fired, but because they have not resigned. I can understand that they would consider it a futile gesture to resign without protest, but how they can make such a protest without resigning is incomprehensible. Do they expect others to do what they say, rather than what they do? It is true that the Notice as quoted by *Science* does not contain the word resign, but the meaning of "forbids" is clear. I am curious to hear the sequel.

DAVID SINCLAIR

Martinsville, New Jersey 08836

NEW from PHARMACIA

## SEPHADEX® LH-20 extends gel filtration to organic solvents



Pharmacia Fine Chemicals now introduces the first lipophilic derivative—Sephadex LH-20—to extend the use of Sephadex to organic solvents. Since it swells in water, polar organic solvents and in mixtures of these solvents, Sephadex LH-20 makes it possible to apply the conventional Sephadex gel filtration technique in fields such as lipid chemistry, polymer chemistry and other areas of organic chemistry and biochemistry where organic solvents must be used.

### Sephadex Solvent-Resistant Columns

The only laboratory columns especially designed for use in chromatographic separations with organic solvent systems. The columns are equipped with two specially designed adjustable flow adaptors for use with various bed heights and for ease of sample application. The columns have the advantage of allowing either descending, upward flow or recycling chromatography as one of their many features.

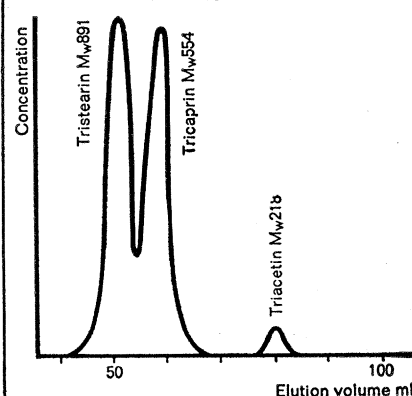
### RANGE OF APPLICATION

Solvent	Approx. solvent regain ml solvent/g dry gel	Approx. bed volume ml/g dry gel
Dimethylformamide	2.2	4
Water	2.1	4
Methanol	1.9	3.5-4.0
Ethanol	1.8	3.0-3.5
Chloroform*	1.8	3.0-3.5
n-butanol	1.8	3
Dioxane	1.4	2.5-3.0
Tetrahydrofuran	1.4	2.5-3.0
Acetone	0.8	1.5

\*Containing 1% ethanol.

Particle size: 25-100  $\mu$

### EXAMPLE OF SPECIFIC APPLICATION



Separation of glycerol esters in chloroform. Bed dimensions: 2.5x32 cm. Sample: 2 ml containing 4 mg of each substance. Flow rate: 0.6 ml/min.

For additional technical information, including the booklets *Sephadex LH-20* and *The Sephadex Solvent-Resistant Columns*, write to:



**PHARMACIA FINE CHEMICALS INC.**

800 Centennial Avenue  
Piscataway, New Jersey 08854

Pharmacia (Canada) Ltd., 110 Place Cr m zie,  
Suite 412, Montreal 11, P. Q.

(Inquiries outside U.S.A. and Canada should be directed to PHARMACIA FINE CHEMICALS, Uppsala, Sweden.)

Circle No. 95 on Readers' Service Card