

II. Conseil National de la Politique Scientifique, Brussels, 1968. 192 pp., illus.

Relativity for Psychology. A Causal Law for the Modern Alchemy. D. G. Garan. Philosophical Library, New York, 1968. 338 pp. \$7.95.

Reviews of Research Behavior Pathology. David S. Holmes, Ed. Wiley, New York, 1968. xiv + 574 pp. Cloth, \$9.95; paper, \$5.95. Series in Psychology.

Rodd's Chemistry of Carbon Compounds. A Modern Comprehensive Treatise. Second edition, S. Coffey, Ed. Vol. 1, Part F, Penta- and Higher Polyhydric Alcohols; Their Oxidation Products and Derivatives; Saccharides. Elsevier, New York, 1967. xvi + 780 pp., illus. \$42.50.

Rola Krzemu w Ewolucji Biochemicznej Zycia. Włodzimierz Sedlak. Państwowe Wydawnictwo Naukowe, Warsaw, 1967, 84 pp., illus. Paper. *Materialy z Ewolucjonizmu.* With English summary.

Salt and Water Balance. Proceedings of the 3rd International Pharmacological Meeting, São Paulo, July 1966, vol. 8. K. H. Beyer and V. Trčka, Eds. Pergamon, New York, 1968. viii + 112 pp., illus. \$9.

Special Relativity and Quantum Mechanics. Francis R. Halpern. Prentice-Hall, Englewood Cliffs, N.J., 1968. vi + 138 pp. \$4.95.

Spectroscopy and Structure of Metal Chelate Compounds. Kazuo Nakamoto and Paul J. McCarthy. Wiley, New York, 1968. xiv + 382 pp., illus. \$16.95.

Spider Mites of Southwestern United States and a Revision of the Family Tetranychidae. Donald M. Tuttle and Edward W. Baker. University of Arizona Press, Tucson, 1968. viii + 143 pp., illus. \$7.50.

Statistical Physics. A. F. Brown. Elsevier, New York, 1968. x + 310 pp., illus. \$7.50.

Steps in the Scientific Tradition. Readings in the History of Science. Richard S. Westfall and Victor E. Thoren, Eds. Wiley, New York, 1968. xiv + 544 pp., illus. Cloth, \$8.95; paper, \$4.95.

A Stereotaxic Atlas of the Java Monkey Brain (Macaca Iru). Totada R. Shantha, Sohan L. Manocha, and Geoffrey H. Bourne. Williams and Wilkins, Baltimore, 1968. iv + 68 pp., illus. \$9.50.

The View from the Barrio. Lisa Redfield Peattie. University of Michigan Press, Ann Arbor, 1968. xii + 147 pp., illus. \$6.95.

Vistas in Astronomy. Vol. 9, New Aspects in the History and Philosophy of Astronomy. First Joint Symposium of the International Astronomical Union and the Union Internationale d'Histoire et de Philosophie des Sciences, Hamburg, Germany, Aug. 1964. Arthur Beer, Ed. Pergamon, New York, 1968. xvi + 320 pp., illus. \$22.

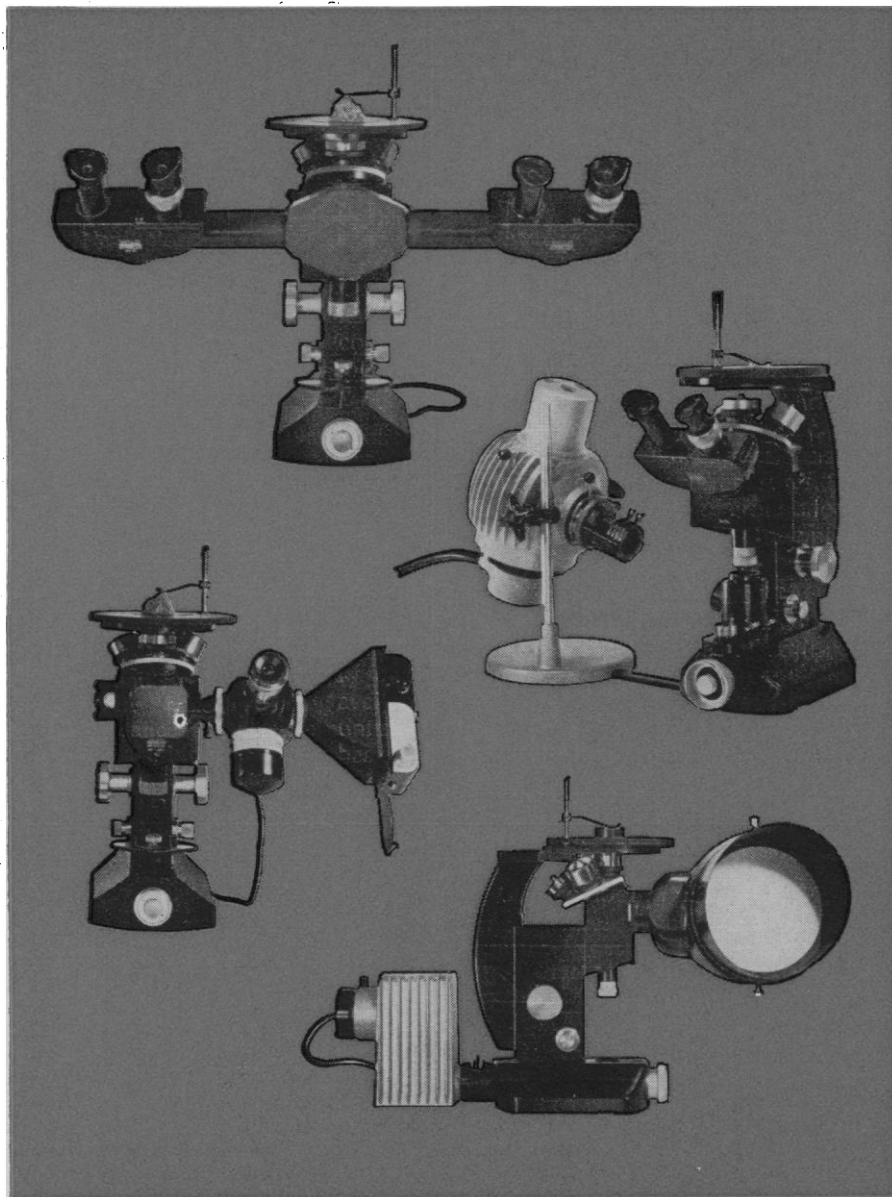
Vitiligo and Psoralens. Abdel Monem El Mofty. Pergamon, New York, 1968. xii + 222 pp., illus. \$10.

Water and Wastewater Engineering. Vol. 2, Water Purification and Wastewater Treatment and Disposal. Gordon Maskew Fair, John Charles Geyer, Daniel Alexander Okum *et al.* Wiley, New York, 1968. xii + 647 pp., illus. \$17.

Waterfowl. Their Biology and Natural History. Paul A. Johnsgard. University of Nebraska Press, Lincoln, 1968. xx + 138 pp., illus. \$8.95.

23 AUGUST 1968

We decided to eliminate some limitations of Metallurgical Microscopes.



Now there's the Wild M50

Unprecedented versatility for investigating surface structures in incident light.

The stability to assure vibration-free observation even in photomicrography.

Combine these M50 features with 1. The world's finest optics and mechanical precision.

2. A complete range of accessories for photomicrography, projection, and discussion.

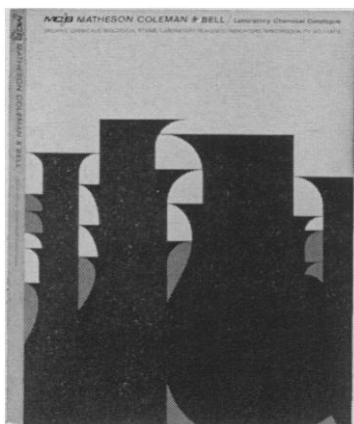
3. Fingertip switching from darkfield to brightfield. 4. Polarizing feature. 5. Inverted construction for all size specimens.

You'll conclude that in Metallurgical Microscopes, there's the Wild M50.

Write or call for Booklet M50.

Circle No. 26 on Readers' Service Card

60% BIGGER 70% BETTER



The new MC&B laboratory chemical catalog is actually 60% bigger than the edition you now have. It contains a special section on laboratory safety. AND our distributors are ready to deliver any of the 6000 reagents it lists.

WRITE —



P.O. Box 85
East Rutherford, N. J.

Circle No. 87 on Readers' Service Card

Order Today!



We're sure you agree that a nearby Spills Bucket is one of the most basic safety aids for any lab. So where is yours?

The new MC&B Spills Bucket contains about 7 lbs. of sand and soda ash, as recommended by safety engineers. You need it.

\$3.75 Delivered in U.S.

Send order to MC&B,
2909 Highland, Norwood, Ohio 45212



Norwood, Ohio
East Rutherford, New Jersey
Los Angeles

Index of Advertisers

23 August 1968

Advanced Instruments, Inc.	828
American Optical Corp.	820, 836
A O Instrument Co.	728
Bio-Rad Laboratories	816
California Computer Products, Inc.	730
Cary Instruments	732
Clevite Corp., Brush Instruments Div.	731
Corning Glass Works	722, 723
Cox Instrument	734
Fisher Scientific Co.	835
Grason-Stadler	724
Hacker, William J., & Co.	826
Heath Co.	726, 727
Heat Systems-Ultrasonics, Inc.	824
Hewlett-Packard	744
Instrumentation Associates, Inc.	815
Instrumentation Specialties Co., Inc.	725
Intertechnique Instruments Inc.	826
Klett Manufacturing Co., Inc.	831
Labindustries	741
Lab-Line Instruments, Inc.	729
Lea & Febiger	825
Leitz, E., Inc.	742
LKB Instruments, Inc.	718
Lourdes Instrument Corp.	823
Matheson	830
Mettler Instrument Corp.	831
Nalge	740
Nuclear-Chicago Corp.	740
Ohaus Scale Corp.	815
Philbrick/Nexus Research	821
Phipps & Bird	833
Precision Scientific Co.	831
Princeton Applied Research Corp.	78
Professional and Technical Programs, Inc.	737
Professional Tape Co., Inc.	831
Radiation Machinery Corp.	733
Revco Inc.	815
Saunders, W. B., Co.	719
Schleicher & Schuell Co.	820
Shandon Scientific Co., Inc.	824
Sobotka, E., Co., Inc.	815
Tracerlab	828
TRW Instruments	822
Wang Laboratories Inc.	819
Whittaker Corp., Gencom Div.	822
Whittaker Corp., ISD Div.	832
Wild Heerbrugg Instruments, Inc.	829
Wilkens-Anderson Co.	832
Williams & Wilkins Co.	827
Wright Line	830
Yellow Springs Instrument Co.	816

NEW MATHATRON PKB

Computer/Calculator System

links multiple keyboards to a central computing station through standard telephones

- Keyboards may be located at any distance from Central Computing Station.
- May be linked by telephone or simple two-wire connection.
- System is fully programmable.
- Problems, including logs and trig, are entered on mathwriter keyboard exactly as you would write them.
- Serial strip printer prints out problem and answer from left to right exactly as written.



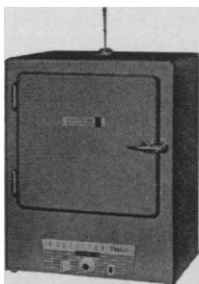
Send for complete information.



160 GOLD STAR BOULEVARD, WORCESTER, MASSACHUSETTS 01606
A DIVISION OF BARRY WRIGHT CORPORATION

DATA PROCESSING ACCESSORIES

The only laboratory oven in its price range that has proved its published uniformity figures in thousands of installations. Uniformity at 100°C is $\pm 0.8^\circ\text{C}$, at 200°C, $\pm 1.1^\circ\text{C}$. Forced circulation gives you fast heat-up and recovery: only 40 minutes to 200°C and full recovery in 12 minutes after door has been open 30 seconds. Evaporation time: 360 cc of water in one hour. Say "Thelco" to your Precision Scientific Dealer and he'll tell you all—ovens, incubators and baths. Or write us: Precision Scientific Co., 3737 W. Cortland St., Chicago, Illinois 60647.



Thelco

Circle No. 105 on Readers' Service Card



Time pressure-sensitive Tapes and Labels provide a versatile system of identification for every laboratory. Stock labels for animal cages, microscope slides and photo-slides. Custom imprints to your specifications including consecutive numbers. High quality vinyl coated Time Tape comes in 17 colors, can be marked with pen or pencil, sticks to any surface (plastic, glass, metal, paper, cloth) and will withstand temperatures from -70°F . to $+250^\circ\text{F}$. Write for free literature.

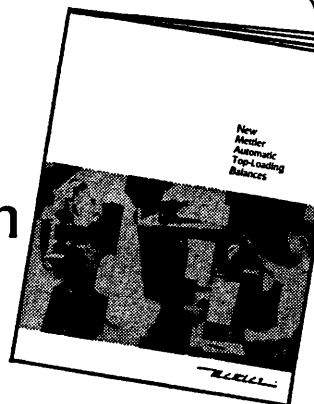


AVAILABLE THROUGH
LABORATORY SUPPLY DEALERS

PROFESSIONAL TAPE CO., INC.
365 EAST BURLINGTON ROAD
RIVERSIDE, ILLINOIS 60546

Circle No. 104 on Readers' Service Card

Four new top-loading balances described in Mettler bulletin



P160, P2000, P5, and P6 are Mettler's new top-loading balances. All provide improved precision/capacity relationships, and all feature analog or digital reading.

The P160 features a reversible scale which eliminates computations in weight-loss studies and permits easy gravimetric titrations.

Level-matic, a Mettler feature which automatically compensates for slight shifts in balance level, is supplied in the P5 and is an option in the P160 and P2000.

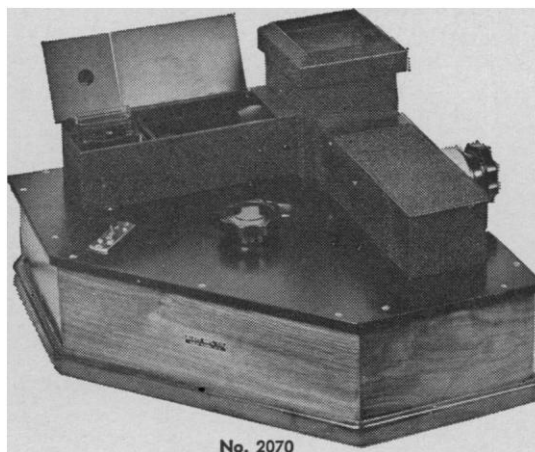
The P5 and P6 offer special advantages for weighings in the range of 5 to 6 kilograms; the P2000 is unusually compact.

Request Bulletin P. Mettler Instrument Corporation, 20 Nassau Street, Princeton, New Jersey 08540.

Mettler®

Circle No. 107 on Readers' Service Card

THE KLETT FLUORIMETER



No. 2070

Designed for the rapid and accurate determination of thiamin, riboflavin, and other substances which fluoresce in solution. The sensitivity and stability are such that it has been found particularly useful in determining very small amounts of these substances.

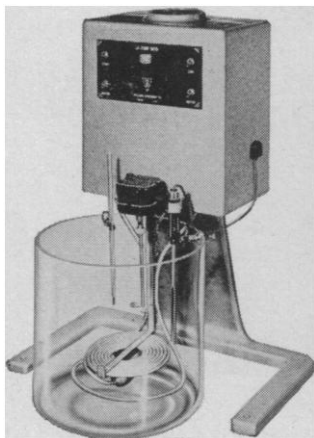
KLETT SCIENTIFIC PRODUCTS

PHOTOELECTRIC COLORIMETERS • BIO-COLORIMETERS
GLASS ABSORPTION CELLS • COLORIMETER NEPHELOMETERS • KLETT REAGENTS • COLONY MARKER AND TALLY

Klett Manufacturing Co., Inc.
179 EAST 87TH STREET, NEW YORK, N. Y.

Circle No. 101 on Readers' Service Card

LO-TEMP BATH HEATS COOLS



Here's double the range of the average visibility bath! Waco's Lo-Temp Bath maintains a constant temperature at any level from $-10^{\circ}\text{C}.$ to $+65^{\circ}\text{C}.$, $\pm .01^{\circ}\text{C}.$. . . ideal where precise temperature control is required. And there's plenty of room for testing, too. Coils fit snugly against the bottom, allowing the entire volume of the jar to be used. This self-contained unit is only 20½" wide, 27½" high. Fits on any lab table or desk.

Specify: No. 882 Waco Lo-Temp Refrigerated Bath, complete with Pyrex jar 12" in diameter, for 115 volt 50/60 cycle A.C. **\$440.**

Other sizes and accessories available to fit your needs. Write for Waco Bath Bulletin for complete information.

Laboratory Supplies and Equipment
wilkens-anderson co.

4625 W. Division St., Chicago, Ill. 60651
Circle No. 86 on Readers' Service Card

832

Personnel Placement

POSITIONS WANTED

Biochemist, M.S. 1966. Research/Teaching experience, enzymes, organic synthesis. Seeks research position, academic or industrial. West Coast. Box 308, SCIENCE. X

Organic-Biochemist, Ph.D. Extensive experience in natural products and pharmaceuticals, especially steroids. Publications, patents. Now completing special fellowship on proteins. Wishes research or teaching. Box 309, SCIENCE. X

Endocrinologist, D.V.M., Ph.D. Four years' research experience. Experience with radioimmunoassay of pituitary hormones. Publications. Seeking active research group or industrial position. Box 310, SCIENCE. X

Microbiologist, Ph.D. Extensive soil, aquatic, and radiation experience. Publications. Seeks university or industrial opportunity. Box 311, SCIENCE. X

Microbiologist, M.S., seeks immediate professional appointment. Academic, industry, hospital. Extensive background in virology, immunology, bacteriology, including cancer research. Will relocate. Call 201-846-4139 evenings. X

Physiologist, M.D., Ph.D. (pulmonary, cardiovascular), 48. Extensive knowledge of biophysics, electronics & biomedical engineering. Grant recipient. Seeks advanced research position in hospital, university or industry. Box 312, SCIENCE 8/30; 9/6

Veterinary Medicine, Ph.D., D.V.M.; AVMA; licensed; completing postdoctorate; seeks teaching or research appointment. Woodward Personnel Bureau, 185 North Wabash, Chicago 60601. X

Physical Chemistry, Ph.D. (1959). Publications, postdoctoral and industrial research experience seeks teaching position in western states. Box 313, SCIENCE. X

Veterinary Pathologist, certified, desires opportunity to do consultant work. Box 314, SCIENCE. 8/30

Business Administrator, alert grant and contract management; accounting, personnel, purchasing. Box 315, SCIENCE. X

Geologist seeks position in exploration. Master's this August. Mining, oil, and minerals experience. Foreign work preferred. W. Jud, 5500 Kearney, Denver 80022. Tel: (303) 288-1307. 8/30

Molecular Biologist (biochemist) Ph.D. Active, productive group, grants and contracts (self-initiated), academic and institutional experience. Box 316, SCIENCE. X

Physicist, theoretical. Ph.D. Desires teaching/research position; opportunity for independent investigation. Box 317, SCIENCE. X

Biochemist, Ph.D. Extensive experience in plant growth regulator, plant physiology, and natural product chemistry; strong interest in isolation and purification of a biologically active compound. Seeks academic or industrial affiliation, immediately. Box 318, SCIENCE. X

Biophysicist Ph.D. 1964. Five years' experience teaching biophysics, biology, physics. One year biomedical research. Desires academic position. Box 319, SCIENCE. X

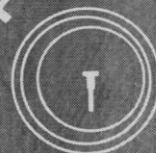
Academic Pathologist, 45, twenty years' experience, wishes to relocate from well-known northeast school to tenure academic position with hard money salary and combined research teaching and autopsy duties in U.S. or Canadian coastal area. Box 320, SCIENCE. 8/30

Biochemist, Ph.D. Five years' clinical-academic and ten years' industrial-academic research and administrative experience. Very strong enzyme and nucleic acids with tissue culture, radioactive and ultracentrifugation techniques. Publications and patents. Desires teaching-research position. University or industry. Box 321, SCIENCE. X

Geneticist, Ph.D. Seeks teaching/research position. Box 322, SCIENCE. 8/30

MEASURE BLOOD PRESSURE

From the
heart



The 1017 implantable blood pressure transducer is one of a family of precision, miniature physiological measuring instruments for in-heart measurement.

Because of its size and capability, the 1017 affords maximum performance at minimum cost.

- High output with solid state surety.
- Millivolts capability.
- Can be adapted to any recording device.
- 6.5 millimeters in diameter for easy implantation.

For complete data, write:



Instrument Systems Division
1020 South Arroyo Parkway
Pasadena, California 91105
Phone: (213) 441-1163

Circle No. 91 on Readers' Service Card

SCIENCE, VOL. 161

New AAAS Symposium Volumes

FORMULATION OF RESEARCH POLICIES September 1967

Editors: Lawrence W. Bass and Bruce S. Old

218 pp., tables, illus., 6 x 9, cloth. \$7.75.

AAAS members' cash orders: \$6.75.

A collection of papers, presented at the Gordon Research Conference held in Santa Barbara, California, in 1966, analyzing and describing past and present science policies at national, international, and corporate levels.

MOLECULAR MECHANISMS OF TEMPERATURE ADAPTATION July 1967

Editor: C. Ladd Prosser

398 pp., 41 tables, 127 illus., bibliogr., index, 6 x 9, cloth. \$12.50.

AAAS members' cash orders: \$10.50.

Papers by 24 contributors on the general physiology of genetic and environmentally induced temperature adaptation in cold-blooded animals, plants, and microorganisms.

ESTUARIES January 1967

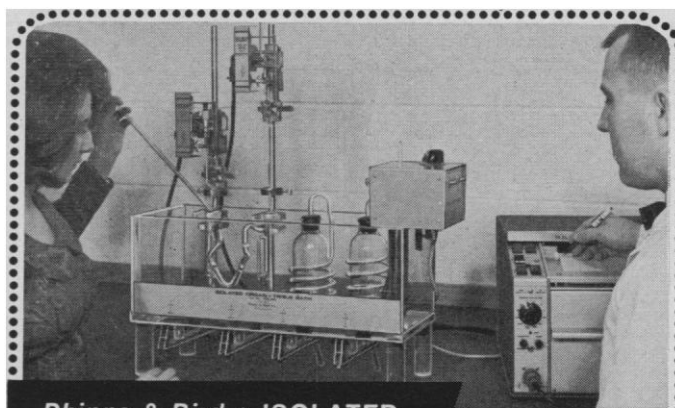
Editor: George E. Lauff

776 pp., 85 tables, 525 illus., bibliogr., index, 7 1/4 x 10 1/2, cloth. \$27.00.

AAAS members' cash orders: \$24.00.

Definitive volume on estuarine research: physical factors, geomorphology, sedimentation, microbiota, nutrients, biological productivity, ecology, physiology and evolution, fisheries, human influences, and pollution.

AAAS .: 1515 Mass. Ave., NW .: Washington, D.C. 20005



Phipps & Bird • ISOLATED ORGAN/TISSUE BATH

Catalog No. 7053-400

A compact system designed to aid the investigator to obtain accurate, reproducible measurements

BIO-ASSAY SYSTEM TRANSDUCER—RECORDER

- High Sensitivity ■ Precise Temperature Control ■ Allows Quick Attachment of Tissue ■ Tissue Can Be Washed Without Exposure or Chamber Can Be Drained ■ Writing Levers Available for Mechanical Operation

PHIPPS & BIRD, INC.



Manufacturers & Distributors of Scientific Equipment

6th & Byrd Sts. — Richmond, Va. 23205

Circle No. 110 on Readers' Service Card

POSITIONS OPEN

New positions are being established for Research Investigators at the Ph.D. level in the fields of Immunology and Virology in our Cancer Chemotherapy Division.

Salary and benefits are excellent plus the ideal combination of suburban living combined with rewarding professional growth.

Reply with complete résumé, recent publications, and salary requirements so that local interviews may be arranged.

Col. Albert J. Roose, Director of Personnel,
Microbiological Associates, Inc.
4733 Bethesda Avenue
Bethesda, Maryland 20014

UNIVERSITY OF QUEENSLAND, AUSTRALIA LECTURER/SENIOR LECTURER IN AGRICULTURE

The University invites applications for the position of Lecturer/Senior Lecturer in the Department of Agriculture. Applicants should have an appropriate degree, and training and experience in pasture agronomy. Experience with tropical species is desirable but consideration will also be given to other applicants with a sound background, who are willing to adapt their work to tropical agriculture. The appointee will have a unique opportunity of participating in the development of a new programme leading to a post-graduate Diploma in Tropical Agronomy. It is expected that the development will make a significant contribution to the development of tropical areas of the world, both in Australia and other countries, by providing advanced agronomic training to scientists.

The salary range for a Senior Lecturer is \$A7500-2x250-\$A8750 and for a Lecturer is \$A5400-4x250, 3x300-\$360 per annum.

The University provides Superannuation similar to F.S.S.U., Housing Assistance, Study Leave and Travel Grants.

Additional information and application forms will be supplied upon request to the Registrar, University of Queensland, St. Lucia, Queensland 4.67 Australia. Applications close on 21st September.

C. J. CONNELL
Registrar

IMMUNOLOGIST

Opportunity for ambitious MS or PhD to originate and develop diagnostic products. Research laboratory located near shore and 30 miles from N.Y.C.

Submit resume and salary requirements to: S. T. WILSON.

WAMPOLE LABORATORY



DENVER CHEMICAL
MANUFACTURING CO.

35 Commerce Rd.,
Stamford, Conn. 06904

Laboratory Supervisor, Biological Sciences. B.S. in Biology or Chemistry. Should have 7-10 years of experience in biological testing with animals, training of technicians, and record keeping.

Reply to: Administrative Manager, Foster D. Snell, Inc. 29 W. 15th St., New York, N.Y. 10011

Memorial University of Newfoundland
Elizabeth Avenue, St. John's, Newfoundland
Science Assistant, Grade V
(\$6,250-8,000 per annum)

Assistant to Senior Instrument Technician, Department of Physics. Minimum of five years' training and experience in one or more fields of instrumentation including electronics. Knowledge of transistor electronics especially desirable. Duties include testing and calibration of scientific instruments, the working up of senior undergraduate laboratory experiments in physics, as well as assisting in the design of scientific apparatus including electronic units. Starting salary commensurate with qualifications and experience. Applications to the Director of Personnel, with names of referees.

POSITIONS OPEN

MARINE FISHERY BIOLOGY

Ph.D. Faculty member to pursue Sea Grant sponsored research program in marine fishery harvest techniques and to teach related courses. Position will require background, training, or interest in application of biology to improvement of harvest techniques.

Apply with résumé to:

Thomas G. Scott, Head, Department of Fisheries and Wildlife, Oregon State University, Corvallis, Oregon 97331.

MICROBIOLOGIST: Manufacturer of sterile human and veterinary antibiotic pharmaceuticals needs a person to conduct microbiological assays on antibiotics in Quality Control Laboratory. New modern building, well-equipped laboratories. Send résumé and education and experience and salary requirements to: JOHN D. COPANOS & COMPANY, INC.—6110 Robinwood Road—Balto., Md. 21225

MICROBIOLOGIST, Ph.D.

To become supervisor of bacteriology department. Experience in hospital microbiology preferred. Progressive mid-western hospital. Salary dependent upon qualifications. Liberal fringe benefits. Send complete résumé to personnel director, St. Elizabeth Hospital, 601 Miami Blvd. West, Dayton, Ohio, 45408.

ACADEMIC PATHOLOGIST

Position involves chiefly teaching and research, with limited service responsibility. Opportunities for independent or collaborative investigation. Rank according to qualifications. Attractive salary and fringe benefits. Contact **Doctor Joseph A. Sisson, Chairman, Department of Pathology, Creighton University School of Pathology, Creighton University School of Medicine, 2500 California Street, Omaha, Nebraska 68131.**

POSITIONS OPEN

We are looking for two creative, open-minded individuals who are challenged by a growing pharmaceutical company which is still small enough to obviate inter-office memorandums.

M.D. or Ph.D.

To assist in clinical evaluation of new drugs including experimental design, data analysis, preparation of reports. Experience in field of endocrinology helpful but not a prerequisite. Knowledge of biostatistics highly desirable.

Compensation for both positions based on experience, education and ability. Submit résumé, present salary and salary requirements for confidential consideration to:

Attention: Personnel

BERLIN LABORATORIES, INC.

An Affiliate of Schering A. G., Germany

375 PARK AVENUE

New York, N. Y. 10022

An equal opportunity employer

POSITIONS OPEN

REGULATORY LIAISON, PHARMACEUTICALS

To assist in the 'ND & DNA regulatory area, preparation of clinical and trade labeling, literature and product brochures. The person we want should have an advanced degree in chemistry, pharmacy or biological sciences, but advanced degree is not mandatory. Knowledge of data processing systems highly desirable.

Compensation for both positions based on experience, education and ability. Submit résumé, present salary and salary requirements for confidential consideration to:

Attention: Personnel

BERLIN LABORATORIES, INC.

An Affiliate of Schering A. G., Germany

375 PARK AVENUE

New York, N. Y. 10022

An equal opportunity employer

COLLEGE TEACHERS WANTED

M.S. OR Ph.D. MANY LOCATIONS

SEPT. POSITIONS

BIOLOGY **MATHEMATICS**
CHEMISTRY **PHYSICS**
ENGINEERING **PSYCHOLOGY**
GEOLOGY **OTHER DISCIPLINES**

WRITE NOW FOR APPLICATION

CITY & SUBURBAN TEACHERS AGENCY
500 FIFTH AVENUE, N.Y., N.Y. 10036

AUSTRALIA

NEW SOUTH WALES

PLANT ECOLOGIST (ASSISTANT CURATOR)
AUSTRALIAN MUSEUM, SYDNEY

SALARY: \$A3334 per annum range \$A5040 per annum. Commencing salary in accordance with qualifications and experience.

QUALIFICATIONS: Degree in Botany essential. Research experience in community ecology preferred.

DUTIES: Will form part of a Department of Environmental Studies. There will be no responsibility for collections and activities will be essentially on survey of rare fauna and flora. It is expected that research work would also be undertaken.

Subject to certain conditions, the successful applicant will be eligible for:—

- Payment of fares to Sydney.
- Financial assistance towards removal expenses.
- Financial assistance towards initial accommodation expenses.

APPLICATIONS CLOSE: Secretary, Public Service Board, Box 2, G.P.O., Sydney, N.S.W. 2001, AUSTRALIA. Apply by 30th September, 1968.

Veterinary Pathologist

Excellent opportunity for D.V.M. with additional training in pathology to participate in design, supervision, evaluation and reporting of preclinical safety studies in animals. Experience in experimental and morphological pathology essential. Some experience in electron microscopy desirable.

Biochemist Ph.D.

New research opportunity in our Toxicology Section for a biochemist with experience in drug metabolism, clinical chemistry methodology and radiobiology. Experience in histochemistry and electron microscopy desirable.

This position involves participation in design and evaluation of preclinical drug safety studies in animals with emphasis on biochemical toxicology.

Ortho is located in a suburban area of New Jersey near Princeton. If interested send résumé to: Mr. Richard Groben

ORTHO

PHARMACEUTICAL CORP.

ROUTE 202 RARITAN, N. J. 08869

A Johnson & Johnson Company

An Equal Opportunity Employer

FELLOWSHIPS

UNIVERSITY OF QUEENSLAND, AUSTRALIA RESEARCH FELLOW IN GENETICS AND PLANT BREEDING

The University invites applications for a Research Fellow in the field of wheat genetics and breeding. The appointee will be stationed principally at the Queensland Wheat Research Institute at Toowoomba, 80 miles from Brisbane. Applicants should have a Ph.D. (or equivalent research experience) and experience with wheat breeding, although consideration may be given to applicant's with experience in other crops. The appointee will have the opportunity and responsibility of developing a wheat breeding programme. Good facilities will be available. He will also have the opportunity of supervising postgraduate students and of participating in the plant breeding training programme of the Department of Agriculture of the University.

The salary range for a Research Fellow is \$A5400-4x250, 3x300, 1x200, 5x250-\$A8750. Starting salary will be commensurate with qualifications.

The appointment will be, in the first instance, until 30th June, 1973 and may be subject to renewal.

Additional information and application forms will be supplied upon request to the undersigned with whom applications close on 21st September.

C. J. CONNELL
Registrar.

QUEEN ELIZABETH II FELLOWSHIPS IN THE PHYSICAL AND BIOLOGICAL SCIENCES

To commemorate the Royal Visit to Australia in 1963 the Australian Government established the Queen Elizabeth II Fellowships Scheme. Under this scheme up to ten fellowships may be awarded each year for full-time research by young scientists of exceptional promise and proved capacity for original work. These are post-doctoral awards tenable in an Australian university or approved research institution, normally for two years. Tenure of a fellowship will commence on a date which normally should be within nine months of the date of the award.

QUALIFICATIONS. Queen Elizabeth II Fellows must be either Australian or United Kingdom citizens. They should have a Ph.D., or equivalent qualifications, in one of the physical or biological sciences (which are deemed to include mathematics and the scientific aspects of statistics, engineering, metallurgy, agriculture and medicine). Awards will, in general, be restricted to applicants who are not more than 30 years of age on the date when applications close.

STIPEND. \$6,000 (Australian) per annum—increased to \$6,500 per annum at age 28 years.

ALLOWANCES. Allowances are payable in respect of a Fellow's wife (\$500 p.a.), each dependent child (\$200), superannuation payments (up to 10 per cent of stipend), appropriate insurance coverage and necessary travel expenses. Host institutions are paid an allowance towards the cost of setting up a Fellow and his research work.

APPLICATIONS. Persons interested in applying for the above fellowships should obtain application forms and a statement of the conditions of award from the Secretary, Queen Elizabeth Fellowships Committee, Department of Education and Science, P.O. Box 826, Canberra City, A.C.T. 2601, Australia; The Official Secretary, Australia House, Strand, London, W.C.2, England; or the Consul General, Australian Consulate General, 636 5th Avenue, New York 20, N.Y., 10020, U.S.A. Applications for the next round of awards, which will be announced in December 1968, close at the Canberra address on 11 October 1968.

Ph.D. or M.D. PHYSIOLOGIST

Growing Company. Frontier Research on Dynamics of Homeostasis, Physically oriented interdisciplinary group. Attractive salary.

GENERAL TECHNICAL SERVICES, INC.

8794 W. Chester Pike, Upper Darby, Pa.

215-449-2333

The Market Place

AUTHORS WANTED BY NEW YORK PUBLISHER

Your book can be published, promoted, distributed by a reliable company on a subsidized basis. Fiction, non-fiction, poetry, scholarly, scientific and even controversial manuscripts welcomed. For Free Booklet write Vantage Press, Dept. SC. 120 W. 31 St., New York 1001

The world's most comprehensive

LENS BANK SERVICE

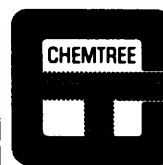
off the
shelf delivery!

- Lenses for research—satisfaction guaranteed
- Available on 10 day Rental Basis—Try before you buy!

Write for FREE Lens
Performance Guide

Burke & James, Inc.

333 W. Lake St.,
Chicago, Ill. 60606



SPECIAL NUCLEAR SHIELDING

CHEMTREE CORPORATION
Central Valley, N.Y.
914-928-2293

Publicly held Research and Development Corporation interested in acquisition of small business in any of the following areas:

PHARMACOLOGY MICROBIAL PRODUCTS
BIOLOGICS BIOLOGICAL SPECIALTIES
ANTIBIOTICS

Contact Box 323, SCIENCE.



ATHEROSCROTIC PRIMATES

NOW SCHEDULING 1968-69 PRODUCTION

ROTH RESEARCH—ANIMAL CARE

1746 M St. N.W. Wash., D. C. 202 - 347-7560

HIGH REJECTION INTERFERENCE FILTERS

also

- FUSED SILICA LENSES
- LASER COMPONENTS
- MONOCHROMATORS
- ARC LAMP SOURCES
- SPECTRAL LAMPS
- PHOTOMETERS

WRITE FOR OUR



CATALOG NO. 23

ORIEL OPTICS CORPORATION
1 MARKET ST., STAMFORD, CONN. 06902
Area Code 203-348-4247