

Teflon Needles

Teflon tubing, with an inert hub, eliminates the risk of contamination. Write for H68 Catalog.

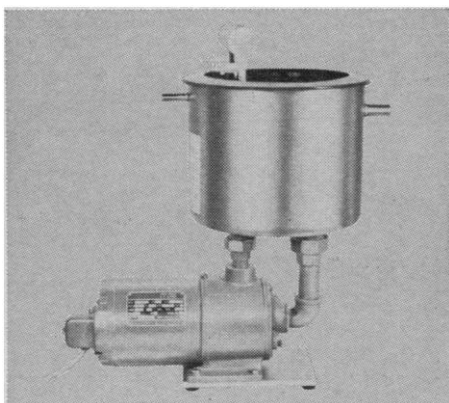
*DuPont regular trademark

HAMILTON COMPANY, P.O. Box 307-K, Whittier, Calif. 90608

Circle No. 81 on Readers' Service Card

Is The Pressure Getting You Down?

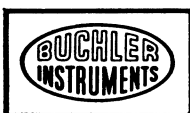
Eliminate the Hazard of Inadequate or Fluctuating Water Pressure which can mean the Loss of Valuable Time and Material!



For 110-115V 60 cycle only....\$249.00

- Raises and holds pressure at 40 psi.
- Provides 2 independent and powerful aspirators.
- Noiseless operation—continuous duty—minimum maintenance.
- Can be installed without plumbing or building alterations.

Request Buchler Bulletin No. S-2-9000



LABORATORY APPARATUS • PRECISION INSTRUMENTS
BUCHLER INSTRUMENTS, INC.
1327 16TH STREET, FORT LEE, NEW JERSEY 07024

192

Circle No. 85 on Readers' Service Card



GET A BUCHLER DUAL ASPIRATOR PUMP

render the human environment safe, and governmental efforts in this direction.

This symposium demonstrated the noticeable progress in understanding mechanisms of chemical carcinogenesis through application of modern methods of molecular biology and pathology, genetics, and pharmacology. Advances of practical significance for carcinogen testing and prevention of disease through elimination of hazards will undoubtedly result from the progress of research in this field. The proceedings of the symposium will be published as volume 11 of *Progress in Experimental Tumor Research* (S. Karger AG, Basel, Switzerland).

F. HOMBURGER

Bio-Research Institute,
Cambridge, Massachusetts 02141

Note

1. The following authors participated in the symposium: I. Berenblum, Rehovoth, Israel; F. Bischoff, Santa Barbara, Calif.; E. Boyland, London; G. Bryson, Santa Barbara; W. J. Burdette, Houston; A. Cantarow, Bethesda; M. M. Coombs and C. J. Croft, London; T. L. Dao, Buffalo; C. Deckers, Louvain, Belgium; G. Della Porta, Milan; L. Diamond, Philadelphia; R. E. Eckardt, Linden, N.J.; A. Furst, San Francisco; C. Heidelberger, Madison, Wis.; D. Hoffmann, New York; F. Homburger, Cambridge, Mass.; N. Mantel, Bethesda; E. C. Miller and J. A. Miller, Madison, Wis.; E. L. Richardson, Boston; U. Saffioti, Chicago; M. Shimkin, Philadelphia; C. M. Southam, New York; B. L. Van Duuren, New York; J. H. Weisburger, Bethesda; G. Wogan, Cambridge, Mass.; E. Wynder, New York.

Calendar of Events

National Meetings

August

1-3. Conference on **Dermatology**, Aspen, Colo. (W. C. Eisele, Univ. of Colorado Medical Center, 4200 E. 9th Ave., Denver 80220)

3-9. National **Poultry Science Assoc.**, Fort Collins, Colo. (R. E. Moreng, Animal Science Bldg., Colorado State University, Fort Collins 80521)

11-15. National **Medical Assoc.**, Houston, Tex. (S. C. Smith, 520 W St. NW, Washington, D.C. 20001)

12-14. American Inst. of **Aeronautics and Astronautics**, Pasadena, Calif. (W. J. Brunke, Meetings Manager, 1290 Sixth Ave., New York 10019)

12-16. American **Crystallographic Assoc.**, Buffalo, N.Y. (W. L. Kehl, Gulf Research & Development Co., P.O. Box 2038, Pittsburgh, Pa. 15230)

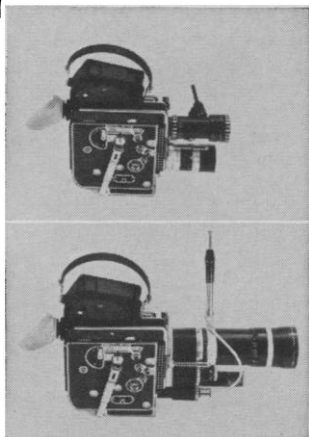
15-16. American Inst. of **Aeronautics and Astronautics**, Pasadena, Calif. (W. J. Brunke, Meetings Manager, 1290 Sixth Ave., New York 10019)

18-21. **Botanical Soc. of America**, Davis, Calif. (Botany Dept., Indiana Univ., Bloomington)

SCIENCE, VOL. 161

All you need to make movies is a 16mm Bolex and a lens.

All you need to make movies is a 16mm Bolex and a lens.



But Bolex is a system as well as a camera. It can be outfitted for your specific historical, anthropological, or nature study requirements. Begin with the H-16 Rex-5 body, which is self-threading and comes with variable shutter speed, filter slot, and magazine saddle. Add a Vario-Switar 86 EE zoom lens

for bright reflex viewing and focusing from extreme wide angle to telephoto, with complete automatic exposure control. Choose from a range of electric motors, or use the built-in spring-wind motor if continuous run is not necessary. Switch from fast motion to slow motion instantaneously (you

have a continuous range of running speeds from 12 to 64 frames per second). Add the lightweight 400 foot magazine, for 12 minutes of uninterrupted shooting. Fully outfitted, the Bolex weighs less than 13 pounds. You can operate the Bolex hand-held with the electric grip, or mount it on

a tripod. Your camera can even be "winterized" to withstand unusual conditions. And there is an underwater housing available, too.

Bolex cameras, made with Swiss watch making precision, have proven their accuracy over many years time, under the most adverse arctic and tropical conditions. This is the Bolex

H-16 Rex-5, The Explorer.

For a copy of Bolex magazine's special issue on scientific photography, write to Paillard Incorporated, 1900 Lower Road, Linden, New Jersey 07036.

BOLEX
Bolex H-16 Rex-5,
The Explorer.

Circle No. 79 on Readers' Service Card

12 JULY 1968

18-21. **Genetics Soc. of America**, Davis, Calif. (Genetics Soc. of America, Missouri State College, Springfield)

18-21. **Mycological Soc. of America**, Davis, Calif. (Pioneering Research Div., Natick Labs., Natick, Mass.)

18-21. **American Bryological Soc.**, Davis, Calif. (The Society, Box 36, Missouri State College, Springfield)

18-21. **Ecological Soc. of America**, Davis, Calif. (Ecology Section, Health Physics Div., Oak Ridge Natl. Lab., Oak Ridge, Tenn.)

18-21. **American Soc. for Horticultural Science**, Davis, Calif. (C. Blackwell, P.O. Box 109, St. Joseph, Mich. 49085)

18-21. **American Soc. of Plant Physiologists**, Davis, Calif. (Dept. of Biology, Yale Univ., New Haven, Conn. 06520)

18-21. **American Soc. of Plant Taxonomists**, Davis, Calif. (Botany Dept., Univ. of California, Berkeley)

18-22. **IUTAM Symp. on High-Speed Computing in Fluid Dynamics**, Monterey, Calif. (F. N. Frenkiel, U.S. Natl. Committee on Theoretical and Applied Mechanics, c/o David Taylor Model Basin, Washington, D.C.)

18-22. **American Soc. for Pharmacology and Experimental Therapeutics**, Minneapolis, Minn. (Mrs. A. Ulman, 9650 Rockville Pike, Bethesda, Md. 20014)

19-23. **American Crystallographic Assoc.**, Buffalo, N.Y. (W. L. Kehl, Gulf Research and Development Co., P.O. Box 2038, Pittsburgh, Pa. 15230)

19-29. **Symposium on Physics of the Magnetosphere**, Washington, D.C. (J. Gazin, % Committee on Space Research, 55 Boulevard Malesherbes, Paris 8, France)

20-23. **Association of American Geographers**, 64th annual, Washington, D.C. (J. W. Nystrom, 1146 16th St., NW, Washington, D.C.)

20-23. **American Statistical Assoc.**, 128th annual, Pittsburgh, Pa. (Executive Director, 810 18th St., NW, Washington, D.C. 20006)

21-23. **Applications of X-ray Analysis**, 17th conf., Denver, Colo. (J. B. Newkirk, Metallurgy Div., Univ. of Denver, Denver)

21-23. **American Soc. of Civil Engineers**, Cambridge, Mass. (W. H. Wisley, United Nations Plaza, 345 E. 47 St., New York 10017)

22-24. **American Nuclear Soc.**, Schenectady, N.Y. (J. E. Burke, General Electric Research and Development Center, Schenectady)

28-30. **Society for the Study of Reproduction**, Nashville, Tenn. (R. P. Amann, 105 Borland Lab., Pennsylvania State Univ., University Park, 16802)

30-1. **American Psychological Assoc.**, San Francisco, Calif. (E. Walker, 1200 17th St., NW, Washington, D.C.)

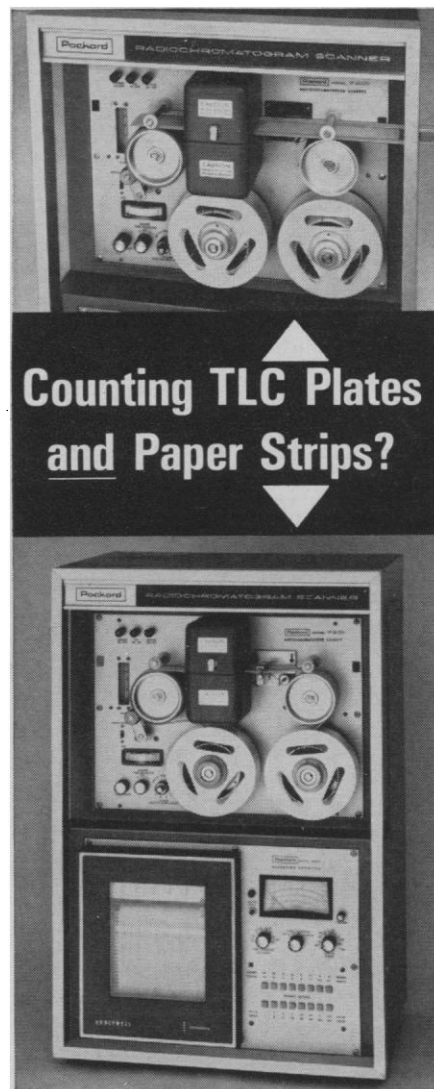
International and Foreign Meetings

August

1-2. **Commonwealth Medical Assoc.** Canberra, Australia. (BMA House, Tavistock Sq., London, W.C.1, England)

5-8. **Aviation and Space Medicine**, 17th intern., Oslo, Norway. (C.-W. Sem-Jacobsen, EEG Lab, Sykehus Gaustad, Vinderen 3, Oslo)

5-9. **Rorschach and Other Projective Techniques**, 7th intern. congr., London,



**Counting TLC Plates
and Paper Strips?**

**This Scanner has
a 50-second
changeover!**

Every Packard Radiochromatogram Scanner is shipped ready to use with either paper strips or TLC plates. Changeover is fast and easy, without complicated adjustments or modifications. And you don't make compromises to count either medium on this scanner; it gives unmatched sensitivity and ease of operation with both strips and plates . . . counts up to four plates unattended. ■ Versatility with chromatography media is just one of the features of a scanner that users have learned is completely reliable under all conditions of use. Others include choice of windowless or window counting, wide range of collimation, pushbutton selection of scanning speeds and ability to handle chromatograms from 1/4 to 2 inches in width. For complete details contact your Packard Sales Engineer or request Bulletin 1038U from Packard Instrument Company, Inc., 2200 Warrenville Road, Downers Grove, Illinois 60515, or Packard Instrument International S.A., Talstrasse 39, 8001 Zurich, Switzerland.

Packard

Circle No. 84 on Readers' Service Card

195

Computer Performance; Calculator Price.



WANG 380

640 Program Steps

24 Storage Registers

$\text{LOG}_e X$, e^x , X^2 , \sqrt{X} , $\frac{1}{X}$, $+$, $-$, X , \div
Performs Subroutines, Loops,
Branches, Makes Decisions.

\$3795.

No special programming language needed. The Wang 380 learns programs directly from keyboard operations and stores them on plug-in magnetic tape cartridges.

You can tailor system capability to your exact needs with compatible accessories including:

Output Writer, CRT Display, additional Data Storage, Teletype, Trig Pack, and On-line Interface.

There is nothing comparable, anywhere.



Dept. 7Q, 836 North St., Tewksbury, Massachusetts 01876 • Tel. 617 851-7311

Call today for immediate trial:

| | | | | | |
|----------------|----------------|----------------|----------------|----------------|----------------|
| (201) 241-0250 | (216) 333-6611 | (313) 278-4744 | (416) 364-0327 | (604) 685-2835 | (703) 931-7878 |
| (203) 223-7588 | (301) 588-3711 | (314) 727-0256 | (504) 729-6858 | (612) 881-5324 | (713) 668-0275 |
| (205) 595-0694 | (301) 821-8212 | (317) 631-0909 | (505) 255-9042 | (613) 224-4554 | (716) 234-5651 |
| (206) 622-2466 | (303) 364-7361 | (403) 266-1804 | (512) 454-4324 | (614) 488-9753 | (717) 397-3212 |
| (212) 682-5921 | (304) 344-9431 | (404) 457-6441 | (513) 531-2729 | (615) 588-5731 | (805) 962-6112 |
| (213) 278-3232 | (305) 564-3785 | (405) 842-7882 | (514) 482-0737 | (617) 851-7311 | (901) 272-7488 |
| (214) 361-4351 | (305) 841-3691 | (412) 366-1906 | (518) 463-8877 | (702) 322-4692 | (916) 489-7326 |
| (215) 642-4321 | (312) 889-2254 | (415) 454-4140 | (602) 265-8747 | (703) 877-5535 | (919) 288-1695 |

England. (C. Williams, 32 Willes Rd., London, N.W.5)

5-10. Asia-Pacific Acad. of Ophthalmology, 3rd Conf., Singapore. (E. Kwee, % Ophthalmic Dept., General Hospital, Singapore 3)

5-10. General Assembly of the World Medical Assoc., Sydney, Australia. (World Medical Assoc., 10 Columbus Circle, New York 10019)

6-16. Soil Science, 9th intern. congr., Sydney, Australia. (Australian Organizing Committee, % CSIRO Waite Agricultural Research Inst., Adelaide)

12-15. International Conf. on Radiation Chemistry, Argonne, Ill. (E. J. Hart, Argonne National Lab., 9700 S. Cass Ave., Argonne 48090)

12-17. Mental Health, 7th intern. congr., London, England. (World Federation for Mental Health, Regional U.S. Office, Suite 716, 124 E. 21 St., New York 10016)

12-30. Limnology, 17th intern. congr., Israel. (International Assoc. of Theoretical and Applied Limnology, % Freshwater Biological Assoc., Ferry House, Far Sawrey, Ambleside, Westmorland, England)

13-16. Disorders of the Skull Base Region, 1st intern. congr., Stockholm, Sweden. (C. A. Hamberger, Ear, Nose, and Throat Clinic, Karolinska Sjukhuset, Stockholm 60)

14-27. United Nations Conf. on the Exploration and Peaceful Uses of Outer Space, Vienna, Austria. (Bundesministerium fur Auswärtige Angelegenheiten, Ballhausplatz 2, A-1010 Vienna)

18-22. International Congr. of Histochemistry and Cytochemistry, New York, N.Y. (R. M. Rosenbaum, Dept. of Pathology, % Albert Einstein College of Medicine, New York 10461)

18-22. Canadian Pharmaceutical Assoc., Regina, Sask. (P. W. Bell, 175 College St., Toronto 2B, Ont., Canada)

18-23. Thermal Analysis, 2nd intern. conf., Worcester, Mass. (P. D. Gain, Univ. of Akron, Akron, Ohio 44304)

18-24. International Union of Theoretical and Applied Mechanics, Monterey, Calif. (F. N. Frenkiel, U.S. National Committee on Theoretical and Applied Mechanics, % David Taylor Model Basin, Washington, D.C.)

19-21. Water Pollution Research, 4th intern. conf., Prague, Czechoslovakia. (P. A. Krenkel, American Commission, Box 1670, Station B, Vanderbilt Univ., Nashville, Tenn. 37203)

19-23. American Meteorological Soc., Montreal, P.Q., Canada. (D. W. Hitschfeld, Dept. of Meteorology, McGill Univ., Montreal)

19-23. International Peat Congr., 3rd, Quebec City, P.Q., Canada. (Div. of Building Research, Natl. Research Council, Ottawa 7, Ont., Canada)

19-28. International Assoc. of Geochemistry and Cosmochemistry, Prague, Czechoslovakia. (E. Ingerson, Univ. of Texas, Austin 78712)

19-28. International Geological Congr., 23rd, Prague, Czechoslovakia. (M. A. Dudek, Ustredni Ustav geologicky, Malostranske nam. 19, Prague 1)

19-28. International Congr. of Genetics, 12th, Tokyo, Japan. (Y. Tazima, % National Inst. of Genetics, Yata 1, 111, Misima, Sizuokaken, Japan)

19-28. International **Paleontological** Union, Prague, Czechoslovakia. (Organizing Committee of the Session, Malostranski Namesti 19, Prague)

20-25. **World Power** Conf., 7th, Moscow, U.S.S.R. (B. P. Lebedev, Commission for Participation by the U.S.S.R. in Intern. Power Conf., State Committee for Science and Technology, Gorkii St. 11, Moscow, K-9)

21-28. British Assoc. for the Advancement of **Science**, 130th annual, Dundee, U.K. (N. C. Wright, 3 Sanctuary Bldgs. 20 Great Smith St., London, S.W.1, England)

24-29. **Gerontology**, 8th Intern. Congr., Washington, D.C. (Secretary, 9650 Rockville Pike, Bethesda, Md. 20014)

24-29. **Neuropathology**, 6th intern. congr., Copenhagen, Denmark. (E. Christensen, % Universitets Psykiatriske Lab., Rigshospitalet, Copenhagen)

24-31. **Cell Biology**, 12th intern. congr., Brussels, Belgium. (D. Dustin, 97, rue Aux Laines, Brussels)

25-30. International Union of **Pure and Applied** Chemistry, 6th, Schenectady, N.Y. (P. Cannon, General Electric Co., R & D Center, Bldg. K-1, Room 3A36, P.O. Box 8, Schenectady 12301)

25-31. **History of Science**, 12th intern. congr., Paris, France. (Mlle. S. Delorme, 12, rue Colbert, Paris)

25-31. International Union of **Physiological Sciences**, 24th, Washington, D.C. (Secretary, 9650 Rockville Pike, Bethesda, Md. 20014)

25-31. **Physical Medicine**, 5th intern. congr., Montreal, Canada. (B. Talbot, 6300 Darlington Ave., Montreal, P.Q.)

26-29. Western Hemisphere **Nutrition** Congr., San Juan, P. R. (American Medical Assoc. Council on Foods and Nutrition, 535 N. Dearborn St. Chicago, Ill 60610)

26-30. International **Health** Conf., Copenhagen, Denmark. (P. A. Wells, Royal Soc. of Health, 90 Buckingham Palace Rd., London, S.W.1, England)

26-31. International Conf. on **Cloud Physics**, Toronto, Ont., Canada. (R. List, Dept. of Physics, Univ. of Toronto, Toronto 5)

26-31. **Photobiology**, 5th intern. congr., Hanover, N.H. (S. A. Gordon, Room 202, Argonne National Lab., Argonne, Ill. 60439)

26-31. International Assoc. of **Meteorology and Atmospheric Physics**, Toronto, Ont., Canada. (R. List, Dept. of Physics, Univ. of Toronto, Toronto 5)

26-13. Australian School of **Nuclear Technology**, Lucas Heights, New South Wales. (Principal, Australian School of Nuclear Technology, Private Mail Bag, Sutherland, N.S.W.)

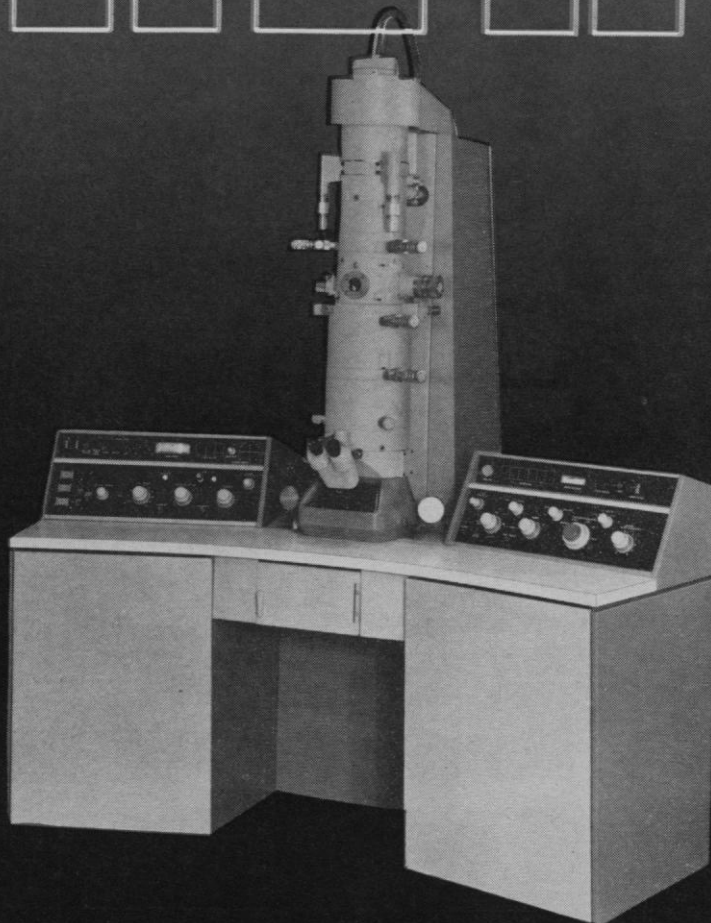
28-5. **World Natural Rubber** Conf., Kuala Lumpur, Malaysia (Natural Rubber Bureau, 1108 16th St., NW, Washington, D.C.)

29-31. Society of **Neurologists and Psychiatrists** of South Africa, Johannesburg. (N. Don, Pan Africa House, Jeppe St., Johannesburg)

31-2. South African **Radiological** Conf., 1st, Johannesburg. (P. Sneider, P. O. Box 4878, Johannesburg)

31-7. International Assoc. of **Logopedics and Phoniatrics**, 15th congr., Paris, France. (B. Vallancien, 16, rue Spontini, Paris 16)

NEW



... JEOLCO's advanced engineering techniques now permit these unprecedented specifications and features in the 100 Series electron microscopes ...

- guaranteed resolution 2Å — highest in the industry
- guaranteed stability better than 2 PPM for both accelerating voltage and objective lens current
- complete automation
- ease of operation enhances multi-operator use
- CRT display for accurate specimen positioning
- specimen carousel accommodating six specimen grids
- accelerating voltages stepped from 20 to 100 kV
- magnifications from 100 to 500,000X
- models for biology and metallurgy.

Immediate deliveries are assured on these moderately-priced, nationally-serviced electron microscopes.



ELECTRON OPTICS DIVISION • 477 RIVERSIDE AVENUE
MEDFORD, MASSACHUSETTS 02155 • (617) 396-6021