

The Times Atlas of the World. Comprehensive Edition. Produced by the *Times* of London in collaboration with Bartholomew, Edinburgh. Houghton Mifflin, Boston, 1967. xlv + 272 pp., illus. \$45.

The Transfer of Technology to Developing Countries. Daniel L. Spencer and Alexander Woroniak, Eds. Praeger, New York, 1967. xiv + 209 pp., illus. \$12.50. Praeger Special Studies in International Economics and Development.

Transformation and Hardenability in Steels. Proceedings of a symposium, Ann Arbor, Mich., February 1967, sponsored by Climax Molybdenum Co. and the University of Michigan. Climax Molybdenum Co., Ann Arbor, Mich., 1967. vi + 212 pp., illus.

The Transplanted Heart. The Incredible Story of the Epic Heart Transplant Operations by Professor Christian Barnard and His Team. Peter Hawthorne. McNally, Chicago, 1968. x + 192 pp., illus. \$4.95.

Treatise on Analytical Chemistry. Part 3, Analytical Chemistry in Industry. Vol. 1. I. M. Kolthoff, Philip J. Elving, and Fred H. Stross, Eds. Interscience (Wiley), New York, 1967. xxiv + 457 pp., illus. \$17.50.

The Ultrastructure of the Animal Cell. L. T. Threadgold. Pergamon, New York, 1967. xxiv + 313 pp., illus. \$13. International Series of Monographs in Pure and Applied Biology: Zoology, vol. 37.

University Education in Computing Science. Proceedings of a conference, Stony Brook, N.Y., June 1967. Aaron Finerman, Ed. Academic Press, New York, 1968. xvi + 237 pp., illus. \$12. Association for Computing Machinery Monograph Series.

The Use of Satellite Pictures in Weather Analysis and Forecasting. R. K. Anderson, E. W. Ferguson, and V. J. Oliver. World Meteorological Organization, Geneva, 1966. xiv + 184 pp., illus. SF 24. Technical Note No. 75.

Vapour-Liquid Equilibrium. Eduard Hála, Jirí Pick, Vojtěch Fried, and Otakar Vilím. Translated from the Czechoslovakian by George Standart. Pergamon, New York, ed. 2, 1967. xxii + 599 pp., illus. \$24.

Venomous Animals and Their Venoms. Vol. 1, Venomous Vertebrates. Wolfgang Bücherl, Eleanor E. Buckley, and Venancio Deulofeu, Eds. Academic Press, New York, 1968. xxiv + 707 pp., illus. \$34.

Vitamin Requirements of Bacteria and Yeasts. Stewart A. Koser. Thomas, Springfield, Ill., 1968. viii + 663 pp., illus. \$26.50.

Washington Colloquium on Science and Society. First Series. Washington, D.C., 1964-1965. S. Frederick Seymour, Ed. Mono Book Corp., Baltimore, 1967. x + 181 pp. \$6.50.

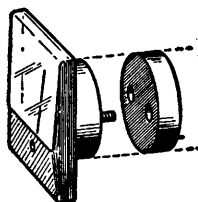
Weather Satellites. Lester F. Hubert and Paul E. Lehr. Blaisdell (Ginn), Waltham, Mass., 1967. viii + 120 pp., illus. Paper, \$2.50. Pure and Applied Sciences Series.

Where Are the Russians? John Bentley. Doubleday, Garden City, N.Y., 1968. 284 pp. \$4.95.

X-Ray and Electron Methods of Analysis. H. van Olphen and William Parrish, Eds. Plenum, New York, 1968. x + 164 pp., illus. \$12.50.

24 MAY 1968

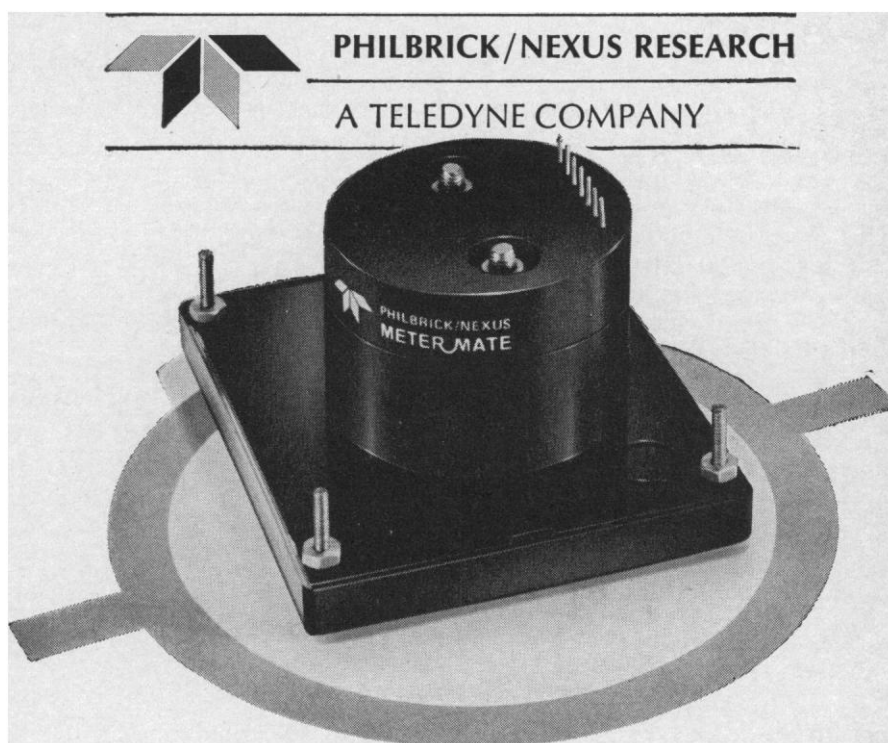
Bolt a new METERMATE to any panel meter



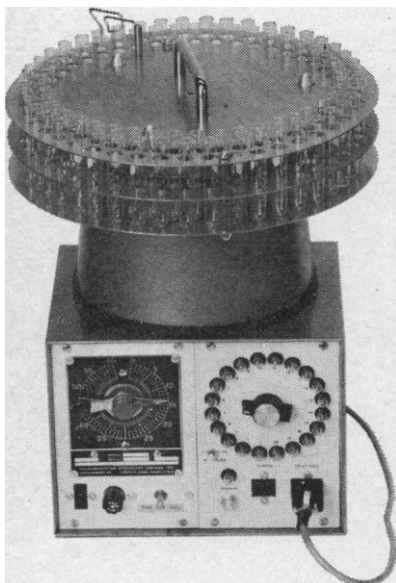
- ... it's a single-ended D.C. voltmeter
- ... it's a high impedance differential voltmeter
- ... it's a log scale D.C. voltmeter
- ... it's a log ratiometer D.C. voltmeter
- ... it's a "you-name-it-we've-got-it" meter

Now standard panel meters read voltage at high source impedances. METERMATES for various functions mount flush at the rear of the meter and fit within the length of the meter terminals — take no extra space, install easily. Ranges are altered simply by changing one external resistor value.

METERMATES are available as individual units or with companion meters in a complete selection of types and ranges. Call your Philbrick/Nexus sales representative for complete specifications, prices and applications assistance. Or write, Philbrick/Nexus Research, 25 Allied Drive at Route 128, Dedham, Massachusetts 02026.



ISCO makes the most compact fraction collector available.



90 tubes in 108 sq. in.

So what?

We've had the most compact fraction collector all along, but we've never bragged about it. We would rather tell you about our Model AT's reliability, and how versatile it is. You can choose from seven combinations of time and volumetric control and add on later if you change your mind. Lift-off reels hold up to 180 test tubes or 90 scintillation vials.

You don't have to put the controller under the drive base. If you are in a cramped cold room, you can put it on a shelf, under the work table, or even outside.

ISCO has complete fraction collectors from \$220.00. Send for brochure FC37D.



INSTRUMENTATION
SPECIALTIES CO., INC.

5824 SEWARD AVE. LINCOLN, NEBR. 68507

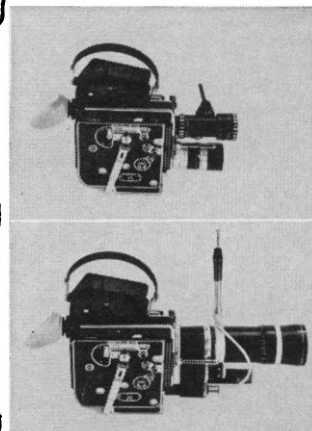
Index of Advertisers

Ainsworth	822
Avco	816
Bausch & Lomb	835, 915, 925
Beckman Instruments, Inc.	807
Boeing Co., Vertol Div.	828
Borden Chemical Co.	921
Brinkmann Instruments	813
Bronwill Scientific	937
Buchler Instruments, Inc.	931
Cambridge University Press	930
Cary Instruments	831
Charles River Laboratories, Inc.	928
Clay-Adams	817
Clevite Corp., Brush Instruments Div.	826
Digital Equipment Corp.	836, 837, 920
Engis Equipment Co.	825
Forma Scientific, Inc.	910
Gilson Medical Electronics, Inc.	840
Gow-Mac Instrument Co.	924
Harvard Apparatus Co., Inc.	934
Heat Systems-Ultrasonics, Inc.	916, 922
Hemco Corp.	929
Hewlett-Packard	819
Honeywell, Denver Div.	832
Instron Corp.	829
Instrumentation Associates, Inc.	929
Instrumentation Specialties Co., Inc.	936
International Equipment Co.	912
Intertechnique Instruments Inc.	909
Jeolco U.S.A. Inc.	911
Klett Manufacturing Co., Inc.	917
LABCONCO Corp.	910
Labindustries	838
Lourdes Instrument Corp.	839
Mallinckrodt	810, 811, 827
Manostat Corp.	830
Matheson Co.	934
New Brunswick Scientific Co., Inc.	812
New England Nuclear Corp.	928, 932
Northeast Electronic Products	910
Nuclear-Chicago Corp.	838
Ohaus Scale Corp.	914
Orion Research Inc.	823
Packard Instrument Co., Inc.	842
Paillard, Inc.	936
Perkin-Elmer Corp., Coleman Instruments Div.	821
Pharmacia Fine Chemicals Inc.	923
Philbrick/Nexus Research	935
Phipps & Bird, Inc.	932
Professional Tape Co., Inc.	917
Ralston Purina Company	932
Reeve Angel	913
Sage Instruments, Inc.	920
Savant Instruments, Inc.	913
Schleicher, Carl, & Schuell Co.	914
Schwarz BioResearch	815
Scientific Glass Apparatus Co. Inc.	927
Shandon Scientific Co., Inc.	912
Sherer-Gillett Co.	917
Silent Glow	916
Sobotka, Eric, Co.	932
Technicon Corp.	820
Thermolyne Corp.	834
Thomas, Arthur H., Co.	940
Technical Instruments, Inc.	814
Tracerlab	924
TRG Div., Control Data Corp.	806
Ultra-Violet Products, Inc.	929
U.S. Stoneware Inc.	930
Vickers Instruments, Inc.	933
Wang Laboratories, Inc.	919
Wild-Heerbrugg Instruments, Inc.	918
Williams & Wilkins Co.	926
Zeiss, Carl, Inc.	818

All you need to make
movies is a 16mm Bolex
and a lens.



All you need to make
movies is a 16mm Bolex
and a lens.



But Bolex is a system as well as a camera. It can be outfitted for your specific historical, anthropological, or nature study requirements. Begin with the H-16 Rex-5 body, which is self-threading and comes with variable shutter speed, filter slot, and magazine saddle. Add a Vario-Switar 86 EE zoom lens

for bright reflex viewing and focusing from extreme wide angle to telephoto, with complete automatic exposure control. Choose from a range of electric motors, or use the built-in spring-wind motor if continuous run is not necessary. Switch from fast motion to slow motion instantaneously (you

have a continuous range of running speeds from 12 to 64 frames per second). Add the lightweight 400 foot magazine, for 12 minutes of uninterrupted shooting. Fully outfitted, the Bolex weighs less than 13 pounds. You can operate the Bolex hand-held with the electric grip, or mount it on

a tripod. Your camera can even be "winterized" to withstand unusual conditions. And there is an underwater housing available, too.

Bolex cameras, made with Swiss watch making precision, have proven their accuracy over many years time, under the most adverse arctic and tropical conditions. This is the Bolex

H-16 Rex-5, The Explorer.

For a copy of Bolex magazine's special issue on scientific photography, write to Paillard Incorporated, 1900 Lower Road, Linden, New Jersey 07036.

BOLEX
Bolex H-16 Rex-5,
The Explorer.

Personnel Placement

POSITIONS WANTED. 25¢ per word, minimum charge \$4. Use of Box Number counts as 10 additional words. Payment in advance is required.

POSITIONS OPEN. Rates listed below—no charge for Box Number. Rates net. No agency commission allowed for ads under 4 inches. No cash discount. Minimum ad: 1 inch. Ads over 1 inch will be billed to the nearest half inch. Frequency rate will apply only to repeat of same ad. No copy changes. Payment in advance is required except where satisfactory credit has been established.

Single insertion	\$70.00 per inch
4 times in 1 year	65.00 per inch

COPY for ads must reach **SCIENCE** 4 weeks before issue date (Friday of every week).

Send copy for Personnel Placement advertising to:

SCIENCE
1515 Massachusetts Ave., NW
Washington, D.C. 20005

Replies to blind ads should be addressed as follows:

Box (give number)
SCIENCE
1515 Massachusetts Ave., NW
Washington, D.C. 20005

POSITIONS WANTED

Ecologist, Ph.D.; 32. Seven years' teaching, publications, consulting, grants. Research program—Wetlands. Research or research-teaching desired. Box 204, **SCIENCE**. 5/31; 6/7, 14

Editor/Writer, M.S., 12 years' R&D industrial experience, 7 years' college teaching. See magazine *R/D* (January 1968), *Science and Technology* (March 1968). Boston and vicinity. Box 195, **SCIENCE**. X

ENTOMOLOGIST Ph.D., M.S. Zoology B.S.; teaching certificate; insecticide research, university teaching experience; prefers academic or research appointment. Woodward Personnel Bureau, 185 North Wabash, Chicago 60601. X

Housewife near university library, M.A., publications, will set up **Coordinate System of Punch Cards**. No limit to index entries, good separation. Method available to clients for literature search. Box 200, **SCIENCE**. X

Inventor and Designer of extracorporeal and automated analytical systems desires position with R&D and manufacturing potential. Box 27262, Columbus, Ohio 43227. X

Microbiologist, Ph.D., 9 years. Experience in radiation biology, microbial biochemistry, and molecular biology. Publications. Active grant. Seeks teaching and research position. Box 196, **SCIENCE**. 5/31

Physicist, mathematical, Ph.D. Seeks teaching/research position with opportunity to pursue own research interests. Box 197, **SCIENCE**. 5/31

Physiologist-Ph.D. Physiology 1968. B. Chemical Engineering 1963. Seeking academic teaching/research or research institute post. Overseas acceptable. Interests: electrochemical aspects of physiology. Available 1 July. Box 203, **SCIENCE**. 6/7

Recent Graduate S. B. in Life Science from large eastern technical institution with experience in vitamin metabolism, developmental biology, and mycotoxin research; publication; currently employed overseas; wishes job with opportunity for graduate studies; U.S. citizen; reply via air mail: P.O. Box 1419, GPO, Bangkok, Thailand. 5/31

Recent Ph.D. Insect Cytogenetics desires further research experience in genetics or cytogenetics. Box 194, **SCIENCE**. X

24 MAY 1968

POSITIONS WANTED

Summer teaching desired: **Vertebrate Zoologist, Ph.D. Phi Beta Kappa.** Sixteen years' experience. Seeks position in biology, field zoology, conservation, vertebrate natural history, or ornithology. Available 1 June to 1 September. Midwest preferred. Box 181, **SCIENCE**. 5/24, 31

Virologist, assistant professor at a university, major interests research in medical virology and oncogenic viruses. Many publications. Seeks a change in academic position. Box 198, **SCIENCE**. 5/31

Zoologist, Ph.D. General zoology, taxonomy, zoogeography, aquatic biology, ecology, morphology, etc. Experienced, research, teaching, administration. Publications, active research program. Desires to relocate. Box 199, **SCIENCE**. 5/31; 6/7

POSITIONS OPEN

(a) **BIOCHEMIST LAB DIRECTOR,** drug, food or clinical exp; mgt ability; \$15-20,000; private lab serv; MidW. (b) **ENDOCRINOLOGIST** supv spec research lab; steroid, protein hormones & immunol; \$11,000; research, teaching, administration. (c) **VIROLOGIST** univ med sch; teach, research; Open; NW. (d) **GENETICS ASST/ASSOC PROF;** to \$11,000; State teach col; E. (e) **BIOCHEMIST;** clinical exp; direct research sect & blood banks; \$12-18,000; expdg research inst; SW. Many more opportunities. **WOODWARD PERS BUREAU,** 185 N. Wabash, Chicago 60601.

BIOLOGY—MEN'S LIBERAL ARTS COLLEGE of 850 students requires chairman for September, 1968. Teaching experience in Anatomy & Developmental Biology or General & Cellular Physiology desirable. Excellent opportunity for teaching and continued curriculum development. Address inquiries with a brief resume to: **Dean John W. May, Washington & Jefferson College, Washington, Penna. 15301.**

CLINICAL/ANALYTICAL BIOCHEMIST, Ph.D.

Recent Ph.D. in bio or analytical chemistry desired for varied professional work including clinical chemistry, toxicology, method development, residue studies. Send résumé to **L. E. Loveless, Ph.D., Clinical Laboratories, 100 N. Euclid, St. Louis, Missouri 63108.**

Opening for a teaching position in undergraduate Biology.

Ecology—General Biology—Botany

Ph.D. required—opportunity and facilities for research. Contact—**Dr. D. J. Ross, Department of Biology Fairfield University, Fairfield, Connecticut 06430.**

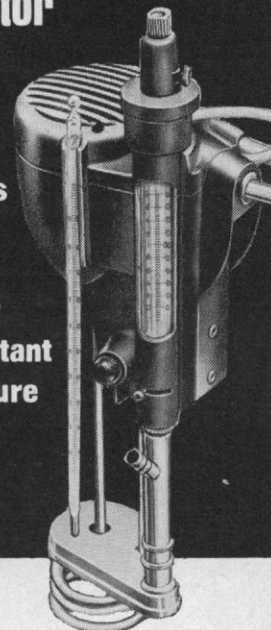
MYCOLOGIST—Teaching and research position available for Ph.D. at Assistant Professor level, preferably for mycologist with some phyco-logy background. Direct inquiries and mail vitae, academic transcripts, and five letters of reference to **Dr. B. J. Neiland, Department of Biological Sciences, University of Alaska, College, Alaska 99701.**

WANTED—PHYSIOLOGIST with postdoctoral experience, preferably in radiation biology, to associate with radiation biology research group. Salary commensurate with level of appointment and experience. Write: **Samuel W. Lesher, Ph.D., Director, Radiation Biology, Allegheny General Hospital, 320 E. North Avenue, Pittsburgh, Pa. 15212.**

Zoologist: Ph.D. or near Ph.D. with interests in Developmental Biology to teach Developmental Vertebrate Anatomy one semester and Genetics, Cell Physiology, or General Biology the other semester. Will also be expected to direct research of small group of seniors in area of specialization. New science building under construction. Please send résumé to: **Dr. James J. Dyar, Chairman, Department of Biology, Bellarmine College, Louisville, Ky. 40205.**

Bronwill Constant Temperature Circulator

Pumps and circulates any suitable container to a constant temperature bath



Accuracy: to $\pm 0.01^\circ\text{C}$
Range: $0^\circ - 100^\circ\text{C}$
Weight: 5 lbs.

- Converts any container easily into a constant temperature bath
- Operates safely even in shallow immersion depths ($3\frac{1}{2}''$)
- Utilizes sensitive Mercury contact controls... (not bi-metal). Precise magnetic temperature setting
- Adjustable rate of flow from a few drops per minute to powerful 12 L/per minute
- Priced sensibly... compare with other lower cost units which sacrifice accuracy and reliability.

This is the standard CTC... most versatile of Bronwill's 3 Constant Temperature Circulators.

Order from your Bronwill Dealer, or Write Bronwill Scientific, Dept. S-5, 277 N. Goodman Street, Rochester, N.Y. 14607.

BRONWILL SCIENTIFIC

POSITIONS OPEN

POSITIONS OPEN

POSITIONS OPEN

biochemist, ph.d

Background and interest
in lipid chemistry.

Send resume to

PERSONNEL MANAGER

CARTER-WALLACE, Inc.

Cranbury, New Jersey

An Equal Opportunity Employer

BIOLOGY—MEN'S LIBERAL ARTS COLLEGE of 850 students desires individuals to teach Anatomy & Developmental Biology or General & Cellular Physiology. Excellent opportunities for teaching in a good environment. Appointment will be for September, 1968, and salary and rank will be dependent upon training and experience. Address inquiries with a brief resume to: **Dean John W. May, Washington & Jefferson College, Washington, Penna. 15301.**

ASSISTANT DIRECTOR CLINICAL MICROBIOLOGY- IMMUNOLOGY, Ph.D.

To assist director and carry out a program of methodologic research in the area of immunologic determination of clinically important substances. Immunochimistry background desirable. Recent Ph.D. will be considered. Salary open. Send résumé to I. Olitzky, Ph.D. All replies confidential and will be acknowledged.

Bio-Science Laboratories
7600 Tyrone Avenue
Van Nuys, California

director of pharmacology

ORTHO offers an exceptional opportunity for a Scientist with proven administrative ability to assume complete responsibility for the direction of our Pharmacology Division. The qualified candidate should possess a Doctoral Degree and have an established record of scientific achievement in his field.

ORTHO is located in an attractive suburban area of New Jersey near Princeton. Send curriculum vitae including salary requirements to Mr. Richard R. Groben.

ortho

Pharmaceutical Corp.
Route 202

Raritan, New Jersey
08869

"An Equal Opportunity Employer"

ASSISTANT TO DIRECTOR of large university-based, interdisciplinary Public Health Service-supported research and training program in basic biology. The principal concerns of the program relate to environmental health and complex natural systems. Some graduate work in one of the natural sciences required. Salary approximately \$10,000; possible faculty appointment; opportunity to publish, and to carry on independent activities. Submit résumé. **Box 187, SCIENCE.**

BIOPHYSICIST—To assist a physiatrist, head of a department of PM&R, also cooperating with the University of Pa. Medical School, in a medical research program. Duties include active assistance in medical research projects and in development of new medical instrumentation. Starting salary \$10,623 or higher based on qualifications. Exceptional fringe benefits. Located in large federal government hospital near Hershey, Pa., 1½ hours from Phila. by turnpike. Non-discriminatory employer. Contact **Personnel Office, VA Hospital, Lebanon, Pa. 17042.**

CLINICAL MICROBIOLOGIST

To supervise and expand routine and develop research microbiology laboratory in well-equipped expanding 475-bed teaching hospital. Large internship residency program with full-time chiefs in medicine, pediatrics, surgery and ambulatory services. Active school of Medical Technology with university affiliation. Five full-time pathologists, a hematologist and clinical chemist. Incumbent will have opportunity to design new microbiology section. Good facilities, pleasant working conditions and liberal benefits. M.S. or experienced B.S. considered. Salary open. Contact:

Personnel Department
The Springfield Hospital
759 Chestnut Street
Springfield, Massachusetts 01107
Telephone: 413-788-4581

ACADEMIC PATHOLOGIST

Position involves chiefly teaching and research, with limited service responsibility. Opportunities for independent or collaborative investigation. Rank according to qualifications. Attractive salary and fringe benefits. Contact **Doctor Joseph A. Sisson, Chairman, Department of Pathology, Creighton University School of Pathology, Creighton University School of Medicine, 2500 California Street, Omaha, Nebraska 68131.**

STAFF CHEMIST

Medical Regulatory Group

Key position with expanding Household Products R&D Center of major growth corporation. Responsible for preparation of NDAs and INDs for submission to F.D.A. Requires several years experience in developing toxicological information for new products. Reply in confidence to:

Thomas G. Paulick
ARMOUR
GROCERY PRODUCTS CO.
Household Products R&D Center
100 S. Wacker Dr. Chicago, Ill. 60606
An Equal Opportunity Employer

Clinical Research Assistant

B.S. or M.S. in biological science, with good background in mathematics. Will assist clinical investigators with the planning, design, implementation and completion of clinical studies. Should have some knowledge of statistics and data processing.

Send complete résumé to: **M. F. Murray**
Technical Employment Representative

THE UPJOHN COMPANY

Kalamazoo

Michigan 49001

An equal opportunity employer

GRADUATE STUDY

Postdoctoral Fellowship in Clinical Chemistry. Background in biochemistry or analytical chemistry desirable. Training program covers areas of administration, teaching and research in University Health Center. Write: **Sidney Nobel, Ph.D., Department of Pathology, School of Medicine, University of Pittsburgh, Pittsburgh, Pennsylvania 15213.**

N.I.H. Research Fellowship in Cardiovascular, Pulmonary and Renal Diseases offered to M.D.'s and Ph.D.'s in life-sciences interested in developing a career of independent research. Laboratory part of large medical center in prime recreational area. American citizenship required. Contact **Director, Department of Research, Maine Medical Center, Portland, Maine 04102.**

POSTDOCTORAL FELLOWSHIPS IN MICROBIOLOGICAL CHEMISTRY are available at the Research Council of Alberta (laboratories on the campus of the University of Alberta) in fundamental research related to lipid and hydrocarbon metabolism.

Applicants should have or expect to have a Ph.D. or equivalent degree before taking up the award. Fellowships are awarded on a one-year basis with a maximum tenure of two years. The annual stipend, which is income tax free, is as follows: Single man or woman \$6,500, married man with no dependents \$7,000, married man with dependents \$7,500. No extra allowance is granted for travel. Please address inquiries to: **The Director of Research, Research Council of Alberta, University Campus, Edmonton, Alberta, Canada.**

The Market Place

BOOKS • SERVICES • SUPPLIES • EQUIPMENT

AUTHORS WANTED BY NEW YORK PUBLISHER

Your book can be published, promoted, distributed by a reliable company on a subsidized basis. Fiction, non-fiction, poetry, scholarly, scientific and even controversial manuscripts welcomed. For Free Booklet write Vantage Press, Dept. SC, 120 W. 31 St., New York 10001.

SPRAGUE-DAWLEY, INC.

Pioneers in the development of the
STANDARD LABORATORY RAT.

P.O. Box 4220

Madison, Wisconsin

CE 3-5318

There were no losers in our recent contest.

This was the contest where everybody won.

CCM: Schaar feels like a winner because we received so many valuable safety ideas for laboratories.

And the following people won these prizes from Crowell Collier and Macmillan, our parent company:

1st Prize, Complete Crowell Collier's Encyclopedia

Phillip J. Brady, Food Consultant, Riverdale, Ill.

Joseph C. Jankowski, Assistant Professor in Biology, St. Joseph's College, Calumet Campus, Ind.

2nd Prize, Complete set of Harvard Classics

Edward J. Latal, Department of Public Health, Chicago, Ill.

Jack W. Petersen, Chemist, The Adams and Westlake Co., Elkhart, Ind.

Joe Newbun, Lab Technician, Freeport Sewage Treatment Plant, Freeport, Ill.

Sister M. Bernadette Keane, St. Francis College, Joliet, Ill.

3rd Prize, Complete Merit Students Encyclopedia

Robert P. Mottice, Research Engineer, Xerox, Ann Arbor, Mich.

Thomas Jacobs, Laboratory Shift Leader, Monsanto Co., Sauget, Ill.

Mrs. A. F. Kaplan, Chemistry Teacher, St. Mather High School, Chicago, Ill.

Robert Cole, Jr., Laboratory Supervisor, Aluminum Company of America, Richmond, Ind.

Robert J. Hanlon, Safety Management Major, Indiana State University, Terre Haute, Ind.

Peggy O'Neal, Technician, Mason-Barron Laboratory, Chicago, Ill.

And of course, everyone who entered won. Because we made them official members of the CCM: Schaar Scientific Safety Squad. And gave each one his own official button. We hope all of them have enjoyed the contest.

But most important of all, everyone who works in and around laboratories is a winner. Because maybe the lab safety posters we're going to distribute will help make laboratory work less dangerous.

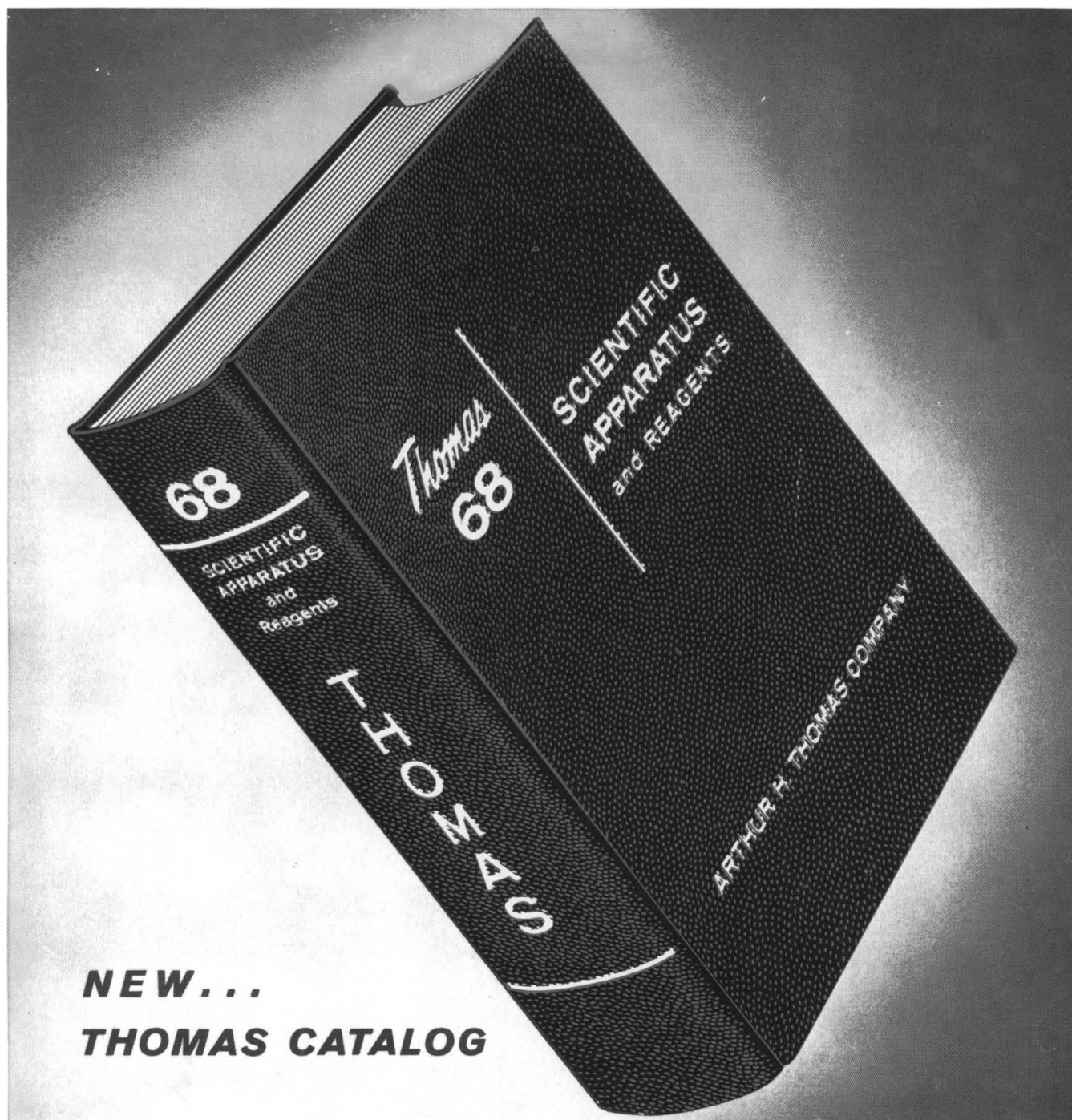
Perhaps this contest has you thinking more about safety. If that were all we accomplished, we'd still call it a big success.

CCM: SCHAAR SCIENTIFIC, INC.

A SUBSIDIARY OF CROWELL COLLIER AND MACMILLAN, INC.

7300 West Montrose Avenue, Chicago, Illinois 60634

THE "SAFE" COMPANY



NEW...
THOMAS CATALOG

A new, 1284-page edition of our general catalog, SCIENTIFIC APPARATUS AND REAGENTS selected especially for use in Chemical and Biological laboratories, is now being distributed.

Approximately 1000 new items are listed, with detailed factual descriptions, carefully indexed and cross-referenced. Included are recent developments both of our Company and of the makers of standard brands.

All items are carefully selected and continually inspected for quality and performance.

Stocks of all items listed are regularly maintained for immediate shipment.

Shipments are made directly from our Philadelphia headquarters, which offers unexcelled national rail and motor transport networks, an international airport, and a major seaport.

Copy sent upon request to laboratory and purchasing personnel.



ARTHUR H. THOMAS COMPANY

Scientific Apparatus and Reagents

VINE STREET AT 3RD • P. O. BOX 779 • PHILADELPHIA 5, PA., U. S. A.