

Keep your copies of **SCIENCE** always available for quick, easy reference in this attractive, practical binder. Simply snap the magazine in or out in a few seconds—no punching or mutilating. It opens **FLAT**—for easy reference and readability. Sturdily constructed, this maroon buckram binder stamped in gold leaf will make a fine addition to your library.

SCIENCE Binders hold one three-month volume of **SCIENCE**. They have a 3¼-inch back and 13 flat fasteners. \$3.75 each. Four binders, \$14.00.

For orders outside the United States add 50¢ per binder. Imprint: name of owner, add 85¢ per binder; year of issues, for example, 1967-2, add 60¢ per binder.

SCIENCE • 1515 Massachusetts Ave., NW,
Washington, D.C. 20005

New AAAS Symposium Volumes

FORMULATION OF RESEARCH POLICIES September 1967

Editors: Lawrence W. Bass and Bruce S. Old
218 pp., tables, illus., 6 x 9, cloth. \$7.75.
AAAS members' cash orders: \$6.75.
A collection of papers, presented at the Gordon Research Conference held in Santa Barbara, California, in 1966, analyzing and describing past and present science policies at national, international, and corporate levels.

MOLECULAR MECHANISMS OF TEMPERATURE ADAPTATION July 1967

Editor: C. Ladd Prosser
398 pp., 41 tables, 127 illus., bibliogr., index, 6 x 9, cloth. \$12.50.
AAAS members' cash orders: \$10.50.
Papers by 24 contributors on the general physiology of genetic and environmentally induced temperature adaptation in cold-blooded animals, plants, and microorganisms.

ESTUARIES January 1967

Editor: George E. Lauff
776 pp., 85 tables, 525 illus., bibliogr., index, 7¼ x 10½, cloth. \$27.00.
AAAS members' cash orders: \$24.00.
Definitive volume on estuarine research: physical factors, geomorphology, sedimentation, microbiota, nutrients, biological productivity, ecology, physiology and evolution, fisheries, human influences, and pollution.

AAAS • 1515 Mass. Ave., NW • Washington, D.C. 20005

"Our only products are the creative ideas and information demanded by the needs of the future"

Since the world's first controlled nuclear chain reaction inaugurated the atomic age—and marked the beginning of Argonne National Laboratory—Argonne has been the source of many of today's most basic findings toward making the atom more beneficial to mankind.

Operated by the University of Chicago for the Atomic Energy Commission, this institution has become a projection of the University's most advanced thinking. Oriented, staffed, and equipped to explore the nature and peaceful uses of the atom, Argonne people—in a typical year—produced 800 reports and publications, gave 500 talks to scientific meetings, and were hosts to more than a score of international, national and regional meetings.

As a member of the Argonne staff, you might choose to conduct basic research in biology, medicine, chemistry, mathematics, micrometeorology, physical metallurgy, ceramics, physics, high energy physics, radiological physics, biophysics or solid state science. Or, you might prefer applied research and development in chemical engineering, computational theory and practice, computer development, direct energy conversion, electrical engineering, instrumentation and controls, heat transfer and engineering mechanics, engineering metallurgy (including ceramics and corrosion), nuclear engineering; accelerator design, reactor physics, or remote manipulation systems.

And you may choose from either of two working sites. Our Chicago facility is located on 3700 acres southwest of the city. Our Idaho Division is at the Nuclear Reactor Test Site near Idaho Falls. Present buildings, facilities and equipment are valued at \$350,000,000.



Let Us Tell You More!

Address your inquiries to: Argonne
National Laboratory, Professional
Placement, 9700 S. Cass Avenue, A-2,
Argonne, Illinois 60440.

ARGONNE NATIONAL LABORATORY

An Equal Opportunity Employer, M&F

Personnel Placement

POSITIONS WANTED

Ph.D. in Biophysics, experience in radiation research, synthesis and structure of nucleic acids; 16 publications; seeks research position possibly some teaching in N.Y.C. or surrounding area. Box 147, SCIENCE. 4/26; 5/3; 10

Chemist-Biochemist. Fifteen years of teaching with publications and grants. Wishes professorship with emphasis on teaching, possibly administration. Box 72, SCIENCE. X

Microbiologist, Ph.D. 37. Registered. Extensive experience in diagnostic bacteriology and mycology and teaching. Seeking position in academic and/or director of clinical microbiology laboratory. Box 154, SCIENCE. 5/3

Zoologist—Ph.D., endocrinology-biochemistry; some publications, 7 years' industrial research, 5 years' experience in developing and teaching courses in endocrinology, cell physiology, and introductory biology. Also experienced in advising advanced undergraduates in research and paper presentation. Interested in teaching position, Fall, 1968. Box 144, SCIENCE. X

ZOOLOGY Ph.D.; biochemistry minor; endocrinology, reproduction physiology, cell biology interests; research, teaching appointment desired. Woodward Personnel Bureau, 185 North Wabash, Chicago 60601

POSITIONS OPEN

PHYSICAL ANTHROPOLOGY

Position open for an Associate Editor. Minimum academic requirement is B.S., graduate study in field preferred. Editorial experience essential. Excellent benefit program. Please forward résumé and salary requirement to Miss Joan Downey, Personnel Manager, Encyclopaedia Britannica, 425 N. Michigan, Chicago, Ill. 60611.

TWO BIOLOGISTS, M.S. degree or its equivalent in writing, editorial, or teaching experience, are invited to form a working editorial unit of an exciting publishing project in the planning stage. Candidates must be able to prepare outlines, evaluate work in progress, and write lucidly. Applications in the form of a résumé are welcome from candidates in any of the biological disciplines, but special attention will be given to recent graduates and beginning biology teachers whose qualifications most closely meet those listed below:

—Biologist with a special concentration in organismic and/or ecological biology. Knowledge or major interest in one or more of the following areas: taxonomy, evolution, behavior, genetics, or biogeography.

—Biologist with a special concentration in molecular and/or cellular biology. Knowledge or major interest in one or more of the following areas: biochemistry, biophysics, microbiology, genetics, physiology.

Box 166, SCIENCE

The Regional Medical Program for Western New York seeks the services of an Epidemiologist. The position to be negotiated will be a conjoined appointment with the Department of Preventive Medicine of the State University of New York at Buffalo. Further details may be obtained from the office of the Regional Medical Program for Western New York, 2211 Main Street, Buffalo, New York 14214.

Research Assistant in Immunology

Large university medical school in New York City. Varied work: intact animal, tissue culture and biochemical. M.S. preferred. Graduate courses available.

Box 129, SCIENCE

POSITIONS OPEN

BIOPHYSICIST—To assist a physiatrist, head of a department of PM&R, also cooperating with the University of Pa. Medical School, in a medical research program. Duties include active assistance in medical research projects and in development of new medical instrumentation. Starting salary \$10,623 or higher based on qualifications. Exceptional fringe benefits. Located in large federal government hospital near Hershey, Pa., 1½ hours from Phila. by turnpike. Non-discriminatory employer. Contact Personnel Office, VA Hospital, Lebanon, Pa. 17042.

Medical Information Specialists

Due to expansion several professional positions now exist for college graduates with strength in the natural sciences.

Responsibilities will include review, evaluation and processing of technical and experimental data concerning the use of pharmaceutical products. Opportunity to participate in advanced systems of data processing.

Modern facilities. Excellent benefits and ideal suburban New York City location.

To explore possibilities write to Personnel Director

Geigy Pharmaceuticals Division
Geigy Chemical Corporation
Saw Mill River Road, Ardsley, N.Y.
An Equal Opportunity Employer

Geigy

PHYSICIST, Ph.D., to teach undergraduate and graduate courses in physics in an expanding department. In order to carry on some research, one-third release time will be granted. Rank and salary depend upon education and experience. Send resume to Clifford G. McCollum, Department of Science, University of Northern Iowa, Cedar Falls, Iowa 50613.

TEXTBOOK EDITOR

Top editorial position open if you have at least 5 to 10 years of general experience, and the equivalent of a master's or doctor's degree in the liberal arts. This position offers you the opportunity to become creatively involved in curriculum reform of the basic subjects taught in kindergarten through grade 8. Ask for information about the dramatically new Open Court Basic Readers and Open Court Correlated Language Arts Program.

Please send résumé of your education, experience, and the type of work you prefer to

M. B. Carus, Publisher
Open Court Publishing Company
Box 599
LaSalle, Illinois 61301

VIROLOGIST (Research Associate)

Ph.D. or D.V.M., or M.S. with equivalent experience for virological R&D in veterinary pharmaceutical company located in Midwest. Salary commensurate with education and experience. Send complete résumé to:

Technical Administration, National Laboratories, 1721 Baltimore, Kansas City, Missouri 64108.

GRADUATE STUDY

DEPARTMENT OF CANCER RESEARCH, University of Saskatchewan, Saskatoon, Sask., Canada

Applications are invited for postdoctoral fellowships in the Saskatchewan Research Unit of the National Cancer Institute of Canada. Preference will be given to applicants with an interest in molecular biology or in enzymes of nucleic acid or carbohydrate metabolism. Stipend is \$6,000 per annum, tax free, plus a travel allowance. Applications should be addressed to Dr. J. F. Morgan at the above address.

PRE- AND POSTDOCTORAL TRAINEESHIPS in research methods in neoplastic endocrinology and skeletomuscular diseases, studies in connective tissue chemistry, cell fractionation, tissue culture, mechanism of action of hormones, metabolic bone disease. Candidates may have either M.D., or Ph.D., or have graduate student status. American citizenship required. Address applications to Dr. V. P. Hollander, Director, Research Institute Hospital for Joint Diseases (an affiliate of the Mt. Sinai School of Medicine), 1919 Madison Ave., New York, N.Y. 10035

MEDICAL COLLEGE OF GEORGIA: Graduate Study in the Basic Health Sciences. FELLOWSHIPS, TRAINEESHIPS, AND ASSISTANT-SHIPS for study leading to the Ph.D. in Biochemistry, Endocrinology, Microbiology, Anatomy, Physiology, and Pharmacology. Also study leading to the M.S. in each of the above and in Medical Illustration and Nursing. NSF, NDEA, NIH, and institutional fellowships and traineeships available for qualified students seeking the Ph.D. Dependency allowance and tuition remission available in most cases. For details of the doctoral program in each field write to: E. J. Behal, Dean, School of Graduate Studies, Medical College of Georgia, 1459 Gwinnett Street, Augusta, Georgia 30902.

COURSES

COURSE ON THE APPLICATION OF ELECTRON MICROSCOPY TO MOLECULAR BIOLOGY

A 3-week course on the Application of the Electron Microscope to Problems in Molecular Biology will be given in Oak Ridge, Tennessee, from September 30, 1968 to October 19, 1968. This course will be sponsored by the Biology Division, Oak Ridge National Laboratory, and the University of Tennessee—Oak Ridge Graduate School of Biomedical Sciences.

The course will stress specimen preparation, examination techniques, and interpretation of results. It will be designed for participants, at the postdoctoral or advanced Ph.D. student level, with good background in some branch of Molecular Biology. The teaching staff will include Lucien Caro, Fred Eiserling, Ann Jacobson, Edouard Kellenberger and Oscar Miller. The deadline for applications is July 14, 1968.

Inquiries may be addressed to Dr. Lucien Caro, Biology Division, Oak Ridge National Laboratory, Post Office Box Y, Oak Ridge, Tennessee 37830.

The Market Place

BOOKS • SERVICES • SUPPLIES • EQUIPMENT

PROFESSIONAL SERVICES

HISTOLOGY SERVICE

RAPID SERVICE Large Orders Quickly Processed! Quickly Shipped! Professional supervision of every order. Free estimates on special problems. Distant points serviced swiftly. Special stains and techniques available. Full protected shipments. HISTOLOGY SERVICE, INC. 4801 N. Broad St., Philadelphia, Pa. Zipcode 19141. (215) DAVenport 4-5800.

SUPPLIES AND EQUIPMENT

• HYPOPHYSECTOMIZED RATS

Shipped to all points via Air Express

For further information write

HORMONE ASSAY LABORATORIES, INC.
8159 South Spaulding Ave., Chicago, Ill. 60652

This is the revolutionary micropipet with an unbelievably accurate tip and a completely automatic top.

Take the new Eppendorf automatic micropipet in hand and be prepared to have your pipetting habits changed...radically.

For example, you won't have to wash or wipe pipets anymore, or worry about contamination or liquids in your mouth. The Eppendorf holds liquid in disposable plastic tips that are instantly interchangeable and completely separate from the pipet mechanism.

You'll also have to unlearn living with significant pipet error. Unlike glass or ordinary plastic pipet tips which always retain a significant liquid film on their inner surface, the Eppendorf polypropylene tips assure virtually complete sample recovery—over 99% with aqueous solutions, 97% with serum. And look at this precision: at 5 μ l, standard deviation is under 0.04 μ l, or less than 1%.

But the easiest thing to get used to with the new Eppendorf is the ease and speed of pipetting. Just press the button on top to fill. To empty, press again. That's all. Blowout of the entire sample is automatic and complete.

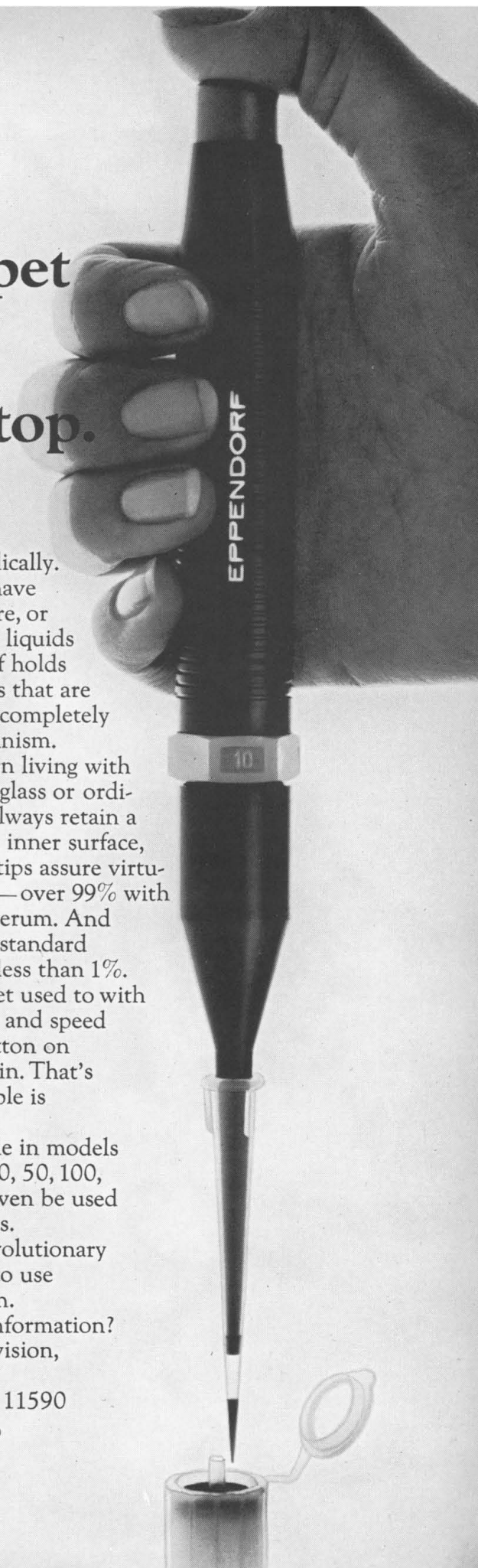
The Eppendorf is available in models dispensing volumes of 5, 10, 20, 50, 100, 200, 500 and 1,000 μ l. It can even be used with acids and organic solvents.

Once you've tried the revolutionary Eppendorf, you'll never want to use conventional micropipets again.

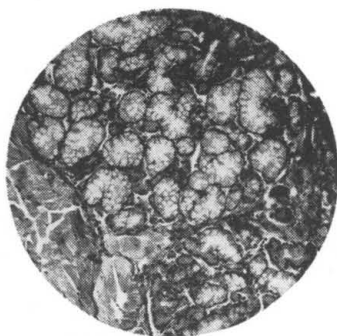
May we send you more information?

Just write: Eppendorf Division,
Brinkmann Instruments, Inc.,
Cantiague Rd., Westbury, N.Y. 11590

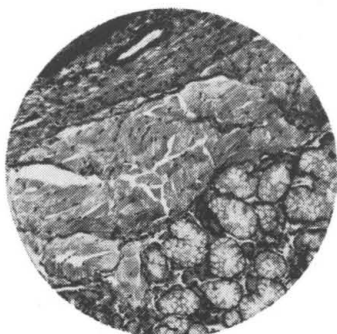
Eppendorf®
MICROPIPETS



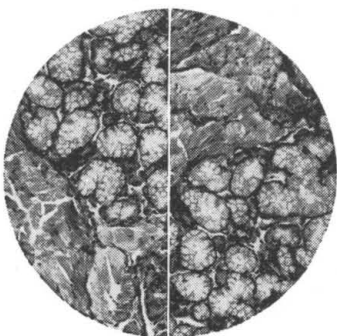
Can you recall these details...



when examining these?



Compare them simultaneously with AO's Duo-Star Microscope.



You view two specimens side by side with the split field of AO's unique Duo-Star Microscope. No guesswork. No back-and-forth specimen changes. No chance of memory playing tricks.

The rugged optical bridge connects two of AO's famous Microstar Laboratory Microscopes. A movable vertical line divides the two images. It is moved transversely so that either field can be viewed individually, or portions of both fields can be viewed simultaneously. You can match,

compare and study specific areas of interest.

Either binocular or trinocular bodies can be accommodated. An optional viewing screen fits on the third tube of the trinocular body to facilitate teaching and group observation. Or this third tube will accept an optional camera for photomicrography.

Unless you possess total recall, investigate the Duo-Star Microscope. Just contact your AO Sales Representative or write for more facts.



AO INSTRUMENT COMPANY

SCIENTIFIC INSTRUMENT DIVISION • BUFFALO, N.Y. 14215

Formerly Instrument Division of AMERICAN OPTICAL COMPANY