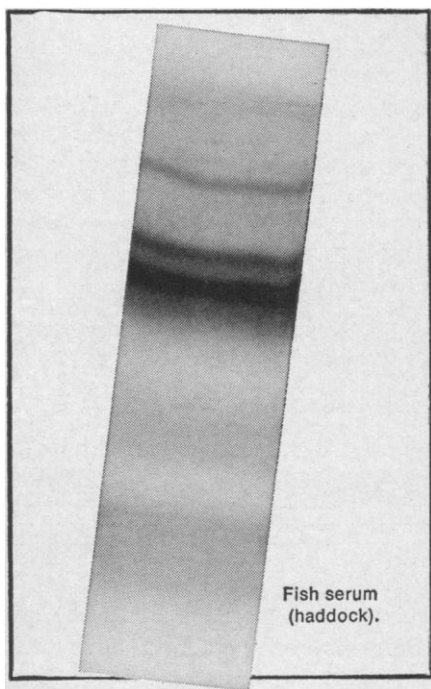


☐ Check for yourself

Sharper separation with any ELECTROPHORESIS SYSTEM

(Including the new S&S)



NO. 2500 MEMBRANE

Customers tell us S&S No. 2500 Membranes are superior in clarity to the others they have tested, and their handling characteristics can only be termed as excellent.

Pure cellulose acetate. May be rendered completely transparent by saturating with liquid of same refractive index, i.e. $n_D = 1.47$. Results may be evaluated colorimetrically when separated fractions are cut from strip and dissolved in suitable solvent. Specimen volume requirement is minimal. Used for immunoelectrophoresis, bidimensional immunodiffusion, and regular electrophoresis.

The S&S No. 2500 Membrane possesses superior separation abilities. Separation of individual bands is clear and distinct. Only a short time is required for electrophoresis and evaluation. Image is sharp. Used in conjunction with S&S electrophoresis components, S&S No. 2500 makes possible a new standard in evaluation of fractions as well as convenience.

SEND FOR FREE SAMPLE STRIPS.

Carl Schleicher & Schuell Co. S-468
Keene, New Hampshire

Send No. 2500 Membrane Samples.
(1" x 6 3/4" size supplied unless otherwise specified.)

Name _____
Company _____
Address _____
City _____
State _____ Zip Code _____



as hydrolysis and solvolysis, Hammett's sigma constants, and shifts in infrared absorption (T. Fukuto, University of California, Riverside). Improved correlations result from taking steric factors into account. Additional effects are: (i) the stereospecificity in cholinesterase inactivation associated with an asymmetric center, and (ii) the possible contribution to selective toxicity of the significant structural difference between insect and mammalian enzymes. Absorption phenomena on the surface of insects and considerations of insecticide chemical transport into the body were discussed by M. Suwanai (Tokyo University of Agriculture and Technology, Fuchu, Tokyo). A method for calculating the rate of insecticide action based on kinetic and diffusion equations was illustrated.

The papers presented at the Nikko seminar are scheduled for publication as a separate volume of the international book series, *Residue Reviews*, edited by F. Gunther and published by Springer-Verlag New York, Inc.

Both Japan and the United States were among the first to recognize certain serious problems resulting from the adverse effects on animals and plants arising from the rapidly increasing use of pesticides. Cooperation between the two countries can accelerate a solution to problems arising from contamination by pesticides.

J. E. CASIDA

Division of Entomology, University
of California, Berkeley

K. FUKUNAGA

National Institute of Agricultural
Sciences and Institute of Physical and
Chemical Research, Tokyo, Japan

Calendar of Events

May

National Meetings

3-4. **Physical Medicine and Rehabilitation**, Northwest Assoc., Palo Alto, Calif. (J. C. Montero, Div. of Rehabilitation Medicine, Stanford Univ. School of Medicine, Palo Alto 94394)

3-4. **Society for Pediatric Research**, Atlantic City, N.J. (Secretary, The Society, % Dept. of Pediatrics, J. H. Miller Health Center, Univ. of Florida, Gainesville, Fla.)

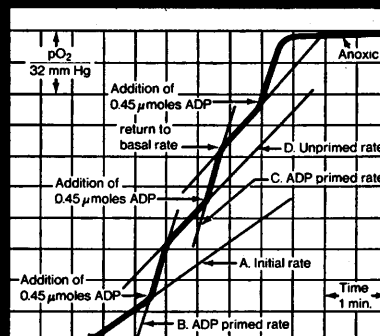
3-5. **Parts, Materials, and Packaging Technical Conf.**, Washington, D.C. (W. Hepner, Electronic Industries Assoc., 2001 Eye St., NW, Washington, D.C. 20006)

4. **American Society for Clinical Nutrition**, Atlantic City, N.J. (A. B. Eisenstein, Secretary-Treasurer, The Society, 818 S. Meramec Ave., St. Louis, Mo. 63105)

4-5. **Economics and Evaluation Symp.**,



mitochondria 30 liver cells 120



Recording of oxidative activity
of mitochondria isolated from
beef heart and primed with ADP.

Mitochondria O_2 uptake rates in 30 seconds and liver cell rates in 120? Yes, with the YSI Model 53 Biological Oxygen Monitor utilizing a special Clark type oxygen electrode. Unique features minimize temperature, flow, and pressure problems, and allow simple insertion of materials and easy debubbling.

The YSI Model 53 draws oxygen uptake and evolution curves automatically and continuously on any 100 mv recorder, eliminating plotting errors and providing useful data in seconds after insertion of materials. Most experiments require 2 to 15 minutes. Micro and macro measurement accessory kits are available.

Your technician can learn to operate the YSI Model 53 Biological Oxygen Monitor in a few hours. Write for complete specifications.

YELLOW SPRINGS INSTRUMENT CO.
YSI YELLOW SPRINGS, OHIO 45387

Dallas, Tex. (J. A. Chrichton, 1100 Vaughan Bldg., Dallas 75201)

4-9. American Soc. of **Planning Officials**, natl. planning conf., San Francisco, Calif. (The Society, 1313 E. 60 St., Chicago, Ill. 60637)

5. American Federation for **Clinical Research**, annual mtg., Atlantic City, N.J. (J. E. Bryan, Executive Secretary, AFRC, 2000 P St., NW, Washington, D.C. 20036)

5-7. American Assoc. of **State Geologists**, 60th annual, Tuscaloosa, Ala. (T. A. Simpson, Assistant State Geologist, Geological Survey of Alabama, P.O. Drawer O, University 35468)

5-8. American Inst. of **Chemical Engineers**, 64th natl., Tampa, Fla. (R. W. Fahien, Univ. of Florida, Gainesville)

5-8. **Industrial Research Inst.**, Boca Raton, Fla. (G. W. McBride, Secretary-Treasurer, The Institute, 100 Park Ave., New York 10017)

5-8. American Soc. of **Lubrication Engineers**, annual mtg., Cleveland, Ohio. (D. B. Sanberg, Executive Secretary, The Society, 838 Busse Highway, Park Ridge, Ill. 60068)

5-8. American Soc. of **Maxillofacial Surgeons**, annual mtg., Philadelphia, Pa. (D. Gouliau, Jr., Executive Secretary, The Society, 116 E. 68 St., New York 10021)

5-9. American Soc. of **Brewing Chemists**, annual mtg., St. Paul, Minn. (B. A. Burkhart, Executive Secretary, The Society, 501 N. Walnut St., Madison, Wis. 53705)

5-9. American Soc. for **Microbiology**, 68th annual, Detroit, Mich. (Executive Secretary, The Society, 115 Huron View Blvd., Ann Arbor, Mich.)

5-9. **Electrochemical Soc., Inc.**, 133rd natl., Boston, Mass. (The Society, 30 E. 42 St., New York 10017)

5-10. American **Pharmaceutical Assoc.**, Miami Beach, Fla. (G. B. Griffenhagen, Director, Division of Communications, The Association, 2215 Constitution Ave., NW, Washington, D.C. 20037)

5-10. Society of **Plastics Engineers**, 26th annual technical conf., New York, N.Y. (R. D. Forger, Director of Memorial Activities, 65 Prospect St., Stamford, Conn. 06902)

6. **Clinical Investigation**, annual mtg., Atlantic City, N.J. (D. S. Fredrickson, National Heart Inst., Bethesda, Md. 20014)

6-7. **Human Factors in Electronics**, symp., Washington, D.C. (R. M. Emberson, Inst. of Electrical and Electronics Engineers, 345 E. 47 St., New York 10017)

6-7. Institute on **Lake Superior Geology**, 14th annual, Superior, Wis. (A. B. Dickas, Dept. of Geology, Wisconsin State Univ., Superior)

6-8. American **Public Power Assoc.**, annual conf., Seattle, Wash. (The Association, Suite 830, 919 18th St., NW, Washington, D.C. 20006)

6-8. American Soc. for **Quality Control**, 22nd annual technical conf. and exhibit, Philadelphia, Pa. (R. W. Shearman, The Society, 161 W. Wisconsin Ave., Milwaukee, Wis.)

6-8. Cine Angiographic Techniques in **Cardiovascular Pulmonary Diseases**, Cleveland, Ohio. (H. L. Kruse, Executive Assistant, American College of Chest Physicians, 112 E. Chestnut St., Chicago, Ill.)

6-8. **Coding Theory**, symp., Madison, Wis. (H. B. Mann, Mathematics Research Center, Univ. of Wisconsin, Madison)

LOURDES

an all purpose

CENTRIFUGE?

CAPACITIES TO 6,000 ml

Lourdes Clini-Fuge™ operates at low speed, high speed and very high speed. The refrigerated model 30-R operates from -20°C to +40°C. Model 30 is non-refrigerated. Both incorporate the exclusive and patented continuous flow system and a dozen other features for unequal versatility, control and convenience. Model 30-R provides for either blood bags or bottles in blood component separation. **FULL FACTORY SERVICES.** For more details, see Guide to Scientific Instruments. For full information, ask your dealer or write.

LOURDES INSTRUMENT CORPORATION
OLD BETHPAGE, L. I., NEW YORK 11804 516-694-8686



6-9. **Aerospace Medical Assoc.**, 39th annual science mtg., Miami Beach, Fla. (W. J. Kennard, Washington National Airport, Washington, D.C. 20001)

6-9. **Aerospace Meteorology**, 3rd conf., New Orleans, La. (K. C. Spengler, American Meteorological Soc., 45 Beacon St., Boston, Mass. 02108)

6-9. **American College of Obstetricians and Gynecologists**, Chicago, Ill. (M. Newton, 79 W. Monroe St., Chicago 60603)

6-9. **Civil Aviation Medical Assoc.**, annual mtg., Miami Beach, Fla. (W. Gillespie, The Association, 3720 Washington St., St. Louis, Mo. 63108)

6-9. **American Soc. of Mechanical Engineers**, Fluids Engineering Div., Philadelphia, Pa. (Meetings Manager, The Society, 345 E. 47 St., New York 10017)

6-9. **Soc. of Aeronautical Weight Engineers**, natl. conf., New Orleans, La. (N. J. Carraway, Box 60024, Terminal Annex, Los Angeles, Calif. 90054)

7-8. **Association of American Physicians**, annual mtg., Atlantic City, N.J. (E. Stead, Jr., Executive Secretary, The Association, Duke Hospital, Durham, N.C.)

7-9. **Industrial and Commercial Power Systems**, technical conf., St. Louis, Mo. (Inst. of Electrical and Electronics Engineers, Office of the Technical Activities Board, 345 E. 47 St., New York 10017)

7-9. **Purdue Industrial Waste Conf.**, Lafayette, Ind. (D. E. Bloodgood, Civil Engineering Bldg., Purdue Univ., Lafayette 47907)

7-9. **Soc. of Aerospace Material and Process Engineers**, 13th natl. symp., Chicago, Ill. (P. Fina, 222 Scottswood Drive, Riverside, Ill.)

7-10. **Society of Experimental Stress Analysis**, spring mtg., Albany, N.Y. (B. E. Rossi, Executive Secretary, 21 Bridge Sq., Westport, Conn. 06880)

8-10. **American Assoc. of Genitourinary Surgeons**, annual mtg., Ponte Vedra, Fla. (H. M. Spence, Executive Secretary, The Association, 4105 Live Oak St., Dallas, Tex. 75221)

8-10. **American Helicopter Soc.**, 24th annual natl. forum, Washington, D.C. (H. M. Lounsbury, Executive Secretary, 141 E. 44 St., New York 10017)

8-10. **Electronic Components**, technical conf., Washington, D.C. (W. Hepner, Electronic Industries Assoc., 2001 Eye St., NW, Washington, D.C. 20006)

9. **Recent Significant Developments in Medicine and Surgery**, John F. Kennedy symp., Boston, Mass. (E. G. Toomey, Concord Medical Center, Concord, Mass.)

9-10. **American Chemical Soc.**, central regional, Akron, Ohio. (G. Brown, Dept. of Chemistry, Kent State Univ., Kent, Ohio)

9-10. **The Child with Heart Disease**, Richmond, Va. (W. D. Nelligan, Executive Director, American College of Cardiology, 9650 Rockville Pike, Washington, D.C. 20014)

9-11. **Anesthesiology**, midwest conf., Chicago, Ill. (A. P. Winnie, Illinois Soc. of Anesthesiologists, 1825 W. Harrison St., Chicago 60612)

9-11. **Society of American Archeology**, 33rd annual, Sante Fe, N.M. (Museum of New Mexico, P.O. Box 2087, Sante Fe 87501)

9-11. **American Inst. of Industrial En-**

gineers, Tampa, Fla. (R. C. Hutchinson, IMC, Box 867, Bartow, Fla.)

10-11. **Arizona Acad. of Science**, Flagstaff. (K. E. Bean, Faculty Box 4058, Northern Arizona Univ., Flagstaff 86001)

10-11. **Association of University Radiologists**, Columbus, Ohio. (S. Rogoff, Dept. of Radiology, Univ. of Rochester Medical School, Rochester, N.Y. 14620)

10-13. **American Psychoanalytic Assoc.**, Boston, Mass. (H. Fischer, The Association, 1 E. 57 St., New York 10022)

11. **Kroeber Anthropological Soc.**, 12th annual, Berkeley, Calif. (A. J. Almquist, Dept. of Anthropology, Univ. of California, Berkeley 94720)

12-16. **American Assoc. of Orthodontists**, San Francisco, Calif. (J. E. Brophy, Executive Secretary, 7477 Delmar Blvd., St. Louis, Mo. 63130)

12-16. **Technical Assoc. of the Pulp and Paper Industry**, 19th coating conf., Miami Beach, Fla. (D. Most, Box 542, Marblehead, Mass.)

12-17. **Mass Spectrometry**, 16th annual conf., Pittsburgh, Pa. (J. L. Franklin, Dept. of Chemistry, Rice Univ., Houston, Tex. 77001)

13-15. **Aerospace Electronics**, natl. conf., Dayton, Ohio. (Inst. of Electrical and Electronics Engineers, Dayton Office, 1220 E. Third St., Dayton 45402)

13-15. **American Astronomical Soc.**, 14th annual, Dedham, Mass. (J. Crone, Northrop-Nortronics, 100 Morse St., Norwood, Mass.)

13-15. **Power Instrumentation Symp.**, 11th natl., Chicago, Ill. (R. K. LaCrosse, Sargent and Lundy, 140 S. Dearborn St., Chicago 60603)

13-16. **Corporate Aircraft Safety Seminar**, Chicago, Ill. (C. Etnyre, Director of Special Affairs, Flight Safety Foundation, 468 Park Ave., S., New York 10016)

13-17. **American College of Psychiatrists**, Boston, Mass. (J. M. Myers, American College of Psychiatrists, 111 N. 49 St., Philadelphia, Pa. 10139)

13-17. **American Industrial Hygiene**, conf., St. Louis, Mo. (G. D. Clayton, Executive Secretary, The Association, 14125 Prevost St., Detroit, Mich.)

13-17. **American Nurses Assoc.**, Dallas, Tex. (A. R. Warner, Director, PR Program, 10 Columbus Circle, New York 10019)

13-17. **Environmental Engineering Conf.**, Chattanooga, Tenn. (W. H. Wisely, American Soc. of Civil Engineers, 345 E. 47 St., New York 10017)

13-17. **Soc. for Applied Spectroscopy**, 7th natl., Chicago, Ill. (J. W. Burroughs, % Borg-Warner Corp., R. C. Ingersoll Research Center, Wolf and Algonquin Rds., Des Plaines, Ill. 60018)

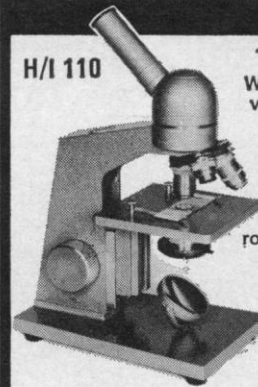
14. **Heart Sounds and Murmurs**, Loma Linda, Calif. (W. D. Nelligan, American College of Cardiology, 9650 Rockville Pike, Washington, D.C. 20014)

14-16. **Power Sources Conf.**, 22nd annual, Atlantic City, N.J. (H. W. Schwartz, Power Sources Div., AMSEL-KL-PT, Fort Monmouth, N.J. 07703)

14-18. **American Assoc. for Contamination Control**, 7th annual technical mtg. and exhibit, Chicago, Ill. (W. T. Maloney, Executive Secretary, Suite 620, 6 Beacon St., Boston, Mass. 48201)

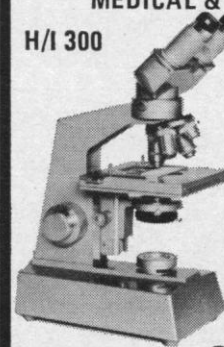
14-18. **Armed Forces Communications and Electronics Assoc.**, 22nd annual conv.,

H/I MICROSCOPES for the discriminating yet... BUDGET MINDED



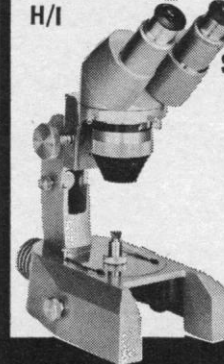
H/I 110

TEACHING
World's most advanced teaching microscope. Features include phase contrast optics, interchangeable, rotatable monocular-binocular observation tubes. New instant-focus system. Outstanding optical performance.



H/I 300

MEDICAL & LABORATORY
Brightfield, darkfield and phase contrast optics, interchangeable, rotatable binocular-monocular observation tubes. Trinocular head for convenient photomicrography. Field flatness corrected objectives.



H/I

STEREOSCOPIC
For every scientific and industrial application. Seven models to choose from. Magnifications from 10x to 200x. Rotatable observation tubes.

WILLIAM J. HACKER & CO., INC.
Box 646, West Caldwell, New Jersey 07006
(201) 226-8450



America's first Astromice

The crew from Charles River. □ They're ready to play a down-to-earth role in lunar research by helping evaluate reactions of earth life to moon material brought back by future Apollo modules. □ Charles River has supplied the Apollo program with nearly 2,000 Astromice™ of three different types. Germfree: without any microbiological flora. Associated: germfree animals introduced to known members of specific bacteria. And COBS®: Caesarean-Originated, Barrier-Sustained. □ If your project calls for mice or rats of absolute quality and dependability, you'll have them within hours. Just tell us where. And how many. Drop us a line for a price list or further information. Charles River Laboratories, Inc., Wilmington, Massachusetts, U.S.A. or Elbeuf, France.



Of mice and moon

Charles River

LABORATORIES, INCORPORATED



FROM THE HAND
OF THE VETERINARIAN
TO RESEARCH

OSMOTIC CONCENTRATION...

an extremely valuable
concentrative index for
biological solutions

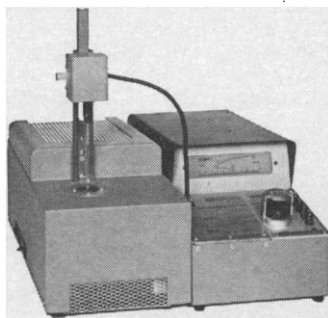
The concentration of particles in solution can be measured in a number of ways; for many applications, however, osmotic concentration is superior to other common indices.

CONCENTRATIVE INDEX	PARTICLE PARAMETERS WHICH AFFECT VARIOUS CONCENTRATIVE INDICES					
	NUMBER	SIZE	SHAPE	CHARGE	UNIONIZED PARTICLES	DENSITY
Osmotic Concentration	✓	✓	✓	✓	✓	✓
Specific Gravity	✓	✓	✓	✓	✓	✓
Refractive Index	✓	✓	✓	✓	✓	✓
Conductivity	✓	✓	✓	✓	✓	✓
Viscosity	✓	✓	✓	✓	✓	✓
Turbidity	✓	✓	✓	✓	✓	✓

Useful In: Electrolyte Balance, Fluid Balance, Renal Function, Fixatives, Dialysis, Total Body Water, etc.

THE ADVANCED OSMOMETER...

The ideal instrument
for measuring osmolality



- Fast • Easy • Rugged
- Reliable • Sensitive
- Specific • Modular

Let us send you FREE pamphlets: "A Physical Chemistry Review — Measuring The Concentration of Solutions", a bibliography, applications information, and a brochure on Advanced Osmometers. Write or call collect today.



**ADVANCED
INSTRUMENTS, INC.**

40 Kenneth Street / 617 DEcatur 2-8200
Newton Highlands, Massachusetts, 02161

Washington, D.C. (W. J. Baird and J. H. Shreve, The Association, 1725 Eye St., NW, Washington, D.C. 20006)

15. American Soc. for **Gastrointestinal Endoscopy**, annual mtg., Philadelphia, Pa. (B. H. Sullivan, Jr., The Society, 2020 E. 93 Street, Cleveland, Ohio 44106)

15-16. American **Urological Assoc.**, Miami Beach, Fla. (W. P. Didusch, Executive Secretary, The Association, 1120 N. Charles St., Baltimore, Md.)

15-17. American **Petroleum Inst.**, Div. of Refining, 33rd midyear mtg., Philadelphia, Pa. (R. R. Wright, The Institute, 1271 Ave. of the Americas, New York 10020)

15-17. **Pulp and Paper**, 14th conf., Milwaukee, Wis. (Inst. of Electrical and Electronics Engineers, Office of the Technical Activities Board, 345 E. 47 St., New York 10017)

15-17. **Treatment of Myocardial Infarction**, Atlanta, Ga. (W. D. Nelligan, American College of Cardiology, 9650 Rockville Pike, Washington, D.C. 20014)

15-18. American **Gastroenterological Assoc.**, annual mtg., Philadelphia, Pa. (H. D. Janowitz, % Mt. Sinai Hospital, 11 E. 100 St., New York 10029)

15-18. **Neurosurgical Soc. of America**, annual mtg., San Francisco, Calif. (C. H. Davis, Jr., Bowman Gray School of Medicine, Winston-Salem, N.C. 27103)

16-17. **Metallurgical Soc.**, 22nd New England regional conf., Hartford, Conn. (J. V. Richard, The Society, 345 E. 47 St., New York 10017)

16-17. **Southern Textile Research Conf.**, Hilton Head Island, S.C. (E. E. St. Louis, % Astro Chemical Corp., 1613 E. North St., Greenville, S.C. 29607)

16-19. **Association of Clinical Scientists**, spring mtg., Little Rock, Ark. (R. P. MacFate, The Association, 300 N. State St., Chicago, Ill. 60610)

17-19. American **Osteopathic Acad. of Orthopedics**, instructional courses, Detroit, Mich. (J. P. Leonard, Secretary, The Academy, 2673 W. Grand Blvd., Detroit 48208)

19-22. American **Thoracic Soc./National Tuberculosis Assoc.**, joint mtg., Houston, Tex. (S. Wicker, National Tuberculosis Assoc., 1740 Broadway, New York 10019)

19-22. **Analysis Instrumentation Symp.**, 14th natl., Philadelphia, Pa. (R. G. Krueger, Leeds and Northrup Co., 4901 Stenton Ave., Philadelphia 19144)

19-23. **Institute of Food Technologists**, annual mtg., Philadelphia, Pa. (C. L. Willey, Executive Secretary, 221 N. La Salle St., Chicago, Ill. 60601)

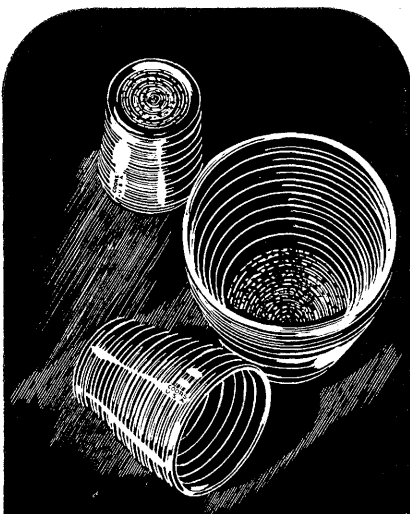
20-22. **Microwave Symp.**, Detroit, Mich. (M. C. Horton, Bendix Research Laboratories Div., Southfield, Mich. 48075)

20-23. **Cement Industry**, technology conf., St. Louis, Mo. (Inst. of Electrical and Electronics Engineers, R. M. Emberson, 345 E. 47 St., New York 10017)

20-24. **Fire Protection Assoc.**, 72nd natl., Atlanta, Ga. (D. Richardson, Manager, PR Dept., National Fire Protection Assoc., 60 Batterymarch St., Boston, Mass.)

20-24. **Inter-American Conf. on Materials Technology**, San Antonio, Tex. (R. D. Wylie, Southwest Research Inst., 8500 Culebra Road, San Antonio)

20-24. **Society of Automotive Engineers**, midyear mtg., Detroit, Mich. (W. I. Marble, Meetings Div. Manager, The Society, 485 Lexington Ave., New York 10017)



Coors U.S.A.
Porous-Bottom Crucibles
 first because
 they last,
 and last,
 and
 last

The filter disc in a Coors porous-bottom structure is an integral part of the crucible body. This exclusive construction keeps the disc in place and in one piece. Indefinitely. Even at high temperatures and vacuums. Disc pore size will not change during ignition, and the entire crucible is inert to all acids except HF and strong alkaline solutions. Easy to clean, no special filter mat needed. Specially treated to stabilize rate of flow. Available in nine sizes, three disc porosities: 1.2 microns (very fine), 5 microns (fine), 15 microns (medium). See your local laboratory-supply dealer or send for catalog.

Coors Porcelain Company,
Golden, Colorado 80401

21-23. **Computer**, joint spring conf., Atlantic City, N.J. (H. G. Asmus, American Federation of Information Processing Societies, 211 E. 43 Street, New York 10017)

21-23. **National Microfilm Assoc.**, Chicago, Ill. (V. D. Tate, Executive Secretary, The Association, Box 386, Annapolis, Md.)

21-23. **Telemetering**, 18th natl. conf., Hollywood, Fla. (R. E. Blue, IBM Corp., 7900 N. Astronaut Bldg., Cape Kennedy, Fla. 32920)

21. **Association for the Advancement of Psychoanalysis**, New York, N.Y. (E. Schattner, Secretary, The Association, 147 E. 50 St., New York 10022)

22-23. **American Iron and Steel Inst.**, general mtg., New York, N.Y. (The Institute, 150 E. 42 St., New York 10017)

22-25. **Society of Technical Writers and Publishers**, 15th annual, Los Angeles, Calif. (C. T. Youngblood, Suite 421, 1010 Vermont Ave., NW, Washington, D.C.)

23-24. **Marine Aquiculture**, conf., Newport, Ore. (W. J. McNeil, Oregon State Univ., Marine Science Center, Marine Science Drive, Newport 97365)

23-25. **American Gynecological Soc.**, annual meeting, Hot Springs, Va. (G. W. Douglas, The Society, 550 First Ave., New York 10016)

23-25. **Biomedical Sciences**, instrumentation symp., Pittsburgh, Pa. (R. D. Allison, Scott and White Clinic, Temple, Tex. 76501)

24-25. **American Podiatry Assoc.**, 6th regional mtg., Sioux Falls, S.D. (M. D. Scofield, Chairman, 120 W. 11 St., Sioux Falls 57102)

24-25. **American Podiatry Assoc.**, 12th regional mtg., San Francisco, Calif. (A. G. Roos, Room 412, 209 Post St., San Francisco 94108)

27-29. **American Ophthalmological Soc.**, Hot Springs, Va. (S. D. McPherson, Secretary-Treasurer, The Society, 1110 W. Main St., Durham, N.C. 27701)

International and Foreign Meetings

12-14. **Sugar Industry Technologists**, 27th annual, Montreal, P.Q., Canada. (P.O. Box 47, Medford, Mass. 02155)

12-16. **Automobile Technical Congr.**, 12th intern., Barcelona, Spain. (Sociedad de Tecnicos de Automacion, Av. Generalísimo 999, Barcelona 14)

12-16. **Canadian Anaesthetists Soc.**, 19th annual, Montebello. (S. M. Campbell, Executive Director, The Society, 178 St. George St., Toronto 5, Ont., Canada)

12-16. **Pacific Coast Oto-Ophthalmological Soc.**, Vancouver, B.C., Canada. (G. E. Morgan, The Society, 960 E. Green St., Pasadena, Calif. 91101)

12-17. **Federation of Societies of Cosmetic Chemists**, 5th intern. congr., Tokyo, Japan. (T. Koyama, Shiseido Co., Ltd., 3, Ginza Hishi, 7-Chome, Chuo-Ku, Tokyo)

12-18. **Universal Aspects of Atmospheric Electricity**, 4th intern. conf., Tokyo, Japan. (S. C. Coroniti, % Space Systems Div., Avco Corp., 201 Lowell St., Wilmington, Mass. 01887)

12-19. **Data Processing for Climatological Purposes**, Asheville, N.C. (World Meteorological Organization, 41, Avenue Guiseppe Motta, Geneva, Switzerland)

13-16. **Canadian Public Health Assoc.**,



Laboratory
 Apparatus for:

- ☒ **HEAT**
☐ **LIGHT**
☒ **MOTION**

STIR-PLATE



STIRS
 and/or
HEATS

- **BEST SLOW SPEED STIRRING CONTROL**—strong magnetic coupling stays locked in with stirring bar, no "jitter-bugging", maintains speeds.
- **HEATS** from near ambient to 700°F with cast aluminum 7" x 7" top.
- **STIRS GENTLY OR** churns **STRONGLY** even in heavy liquids.
- **EMBEDDED HEATING ELEMENT** is supported by refractory, heats evenly.
- **STRONG, PERFORATED STAINLESS STEEL CASE** thoroughly ventilates motor and controls, stays attractive.
- **PRECISE CONTROL**—choose any heat or speed separately or combined and it will hold.

Price with 2 Teflon Stirring Bars \$92.50

New CATALOG 68

Write today for your free copy

48-Page catalog shows expanded line: furnaces, controls, hot plates, mag. stirrers, Stir - Plates, Stir - Lights, Dri-Baths, incubators, lab-lights, meters, Owner - Built furnace accessories.



THERMOLYNE CORPORATION

2555 KERPER BLVD.
 DUBUQUE, IOWA 52001 U.S.A.

a subsidiary of Ritter Pfaudler Corporation

56th annual, Vancouver, B.C., Canada. (Executive Director, The Association, 1255 Yonge St., Toronto 7, Ont., Canada)

13-16. **Circumventricular Organs and Cerebrospinal Fluid**, symp., Reinhardtbrunn, Germany. (G. Sterba, Zoologisches Institut, Karl-Marx-Universität, Talstr. 33, Leipzig, Germany)

13-17. **International Congr. Against Noise**, 5th, London, England. (Mr. Connel, % Noise Abatement Soc., 6 Old Bond St., London, W.1)

13-17. **Mechanical Pulping**, 6th intern. congr., Atlanta, Ga. (K. G. Chesley, Technical Secretary, Technical Assoc. of the Pulp and Paper Industry, 360 Lexington Ave., New York 10017)

13-18. **Instruments, Electronics, and Automation**, intern. exhibition, London, England. (Industrial Exhibitions Ltd., 9 Argyll St., London, W.1)

13-18. **International Union for Electroheat**, 6th intern. congr., Brighton, England. (British Natl. Committee on Electroheat, 2 Savoy Hill, London W.C.2, England)

13-18. **Water Studies**, 21st intern. conf., Liege, Belgium. (Ceredeau, 2, rue A. Stevart, Liege)

14-16. **Steam Generating and Other Heavy Water Reactors**, conf., London, England. (A. McDonald, Secretary, British Nuclear Soc., 1-7 Great George St., Westminster, London, S.W.1)

14-17. **Quantum Electronics**, intern. conf., Miami Beach, Fla. (L. Winner, 152 W. 42 St., New York, 10036)

14-19. **European Federation of Chemical Engineering**, 4th symp., Brussels, Belgium. (J. G. Van De Vusse, Koninklijke/Shell Laboratorium Badhuisweg 3, Amsterdam, Netherlands)

15-17. **Canadian Phytopathological Soc.**, annual mtg., Winnipeg, Manitoba, Canada. (W. C. McDonald, Canada Dept. of Agriculture, Research Station, 25 Dafoe Rd., Winnipeg 19)

16-18. **Experimental Zoology**, intern. congr., Vienna, Austria. (Wiener Medizinische Akademie, Reisedienst Stadiongasse 6-8, A-1010 Vienna)

17-19. **Royal Astronomical Soc. of Canada**, general assembly, Calgary, Alta. (The Society, 252 College St., Toronto 2B, Ont., Canada)

18-22. **Cytology**, 3rd intern. congr., Rio de Janeiro, Brazil. (C. Ferreira, Emilio Berla 46-3 Copacabana, Rio de Janeiro)

18-28. **Eocene Stratigraphy**, symp., Paris, France. (Ch. Pomerol, Laboratoire de Geologie, 1, rue de la Brosse, Paris 5)

19-22. **Canadian Urological Assoc.**, annual mtg., Houston, Tex. (A. H. Irvine, 1105 Carling Ave., Suite 207, Ottawa 3, Ontario, Canada)

19-26. **Elementary Particle Theory**, Nobel symp., Goteborg, Sweden. (Nobel Foundation, Sturegatan 14, Stockholm 5, Sweden)

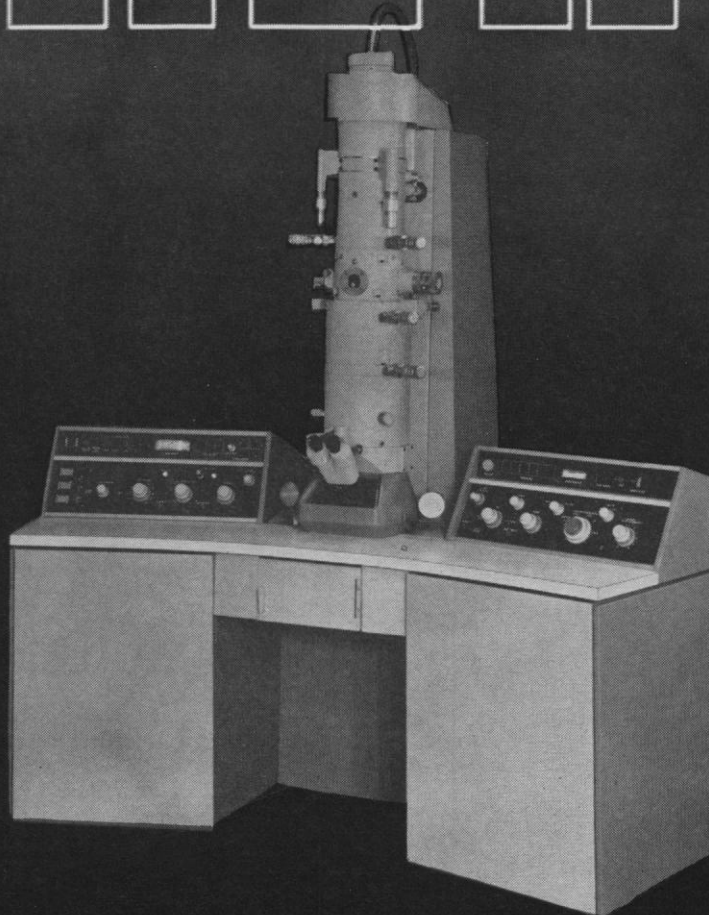
20-23. **Powder Technology**, intern. conf., Chicago, Ill. (M. Jackson, Research Inst., Illinois Inst. of Technology, 10 W. 35 St., Chicago 60616)

20-24. **Acoustical Soc. of America**, spring mtg., Ottawa, P.Q., Canada. (E. A. G. Shaw, Natl. Research Council, Sussex Drive, Ottawa)

20-24. **Inelastic Scattering of Neutrons**, symp., Copenhagen, Denmark. (International Atomic Energy Agency, Karntner Ring 11, Vienna 1, Austria)

26 APRIL 1968

NEW



... JEOLCO's advanced engineering techniques now permit these unprecedented specifications and features in the 100 Series electron microscopes ...

- guaranteed resolution 2Å — highest in the industry
- guaranteed stability better than 2 PPM for both accelerating voltage and objective lens current
- complete automation
- ease of operation enhances multi-operator use
- CRT display for accurate specimen positioning
- specimen carousel accommodating six specimen grids
- accelerating voltages stepped from 20 to 100 kV
- magnifications from 100 to 500,000X
- models for biology and metallurgy.

Immediate deliveries are assured on these moderately-priced, nationally-serviced electron microscopes.

jeolco
U.S.A. • INCORPORATED

ELECTRON OPTICS DIVISION • 477 RIVERSIDE AVENUE
MEDFORD, MASSACHUSETTS 02155 • (617) 396-6021