

**Societies**, 5th space Congr., Cocoa Beach, Fla. (E. P. Wynne, General Electric Co., Apollo Support Dept., P.O. Box 7011, Cape Canaveral, Fla. 32920)

11-14. **Western Metal and Tool Conf. and Exposition**, Los Angeles, Calif. (J. A. Fellows, Director of Technical Programming, Metals Park, Ohio)

11-15. **Basic Inst. for Medical Record Personnel**, Memphis, Tenn. (Miss M. C. Beard, RRL, Director, Institute Dept., 840 North Lake Shore Drive, Chicago, Ill. 60611)

12-14. **Fire Weather Conf.**, Salt Lake City, Utah. (K. C. Spengler, 45 Beacon St., Boston, Mass. 02108)

13-15. **Instrumentation for the Iron and Steel Industry**, 18th natl. conf., Pittsburgh, Pa. (T. Schuerger, U.S. Steel Corp., Research Lab., Monroeville, Pa. 15146)

13-16. **Optical Soc. of America**, spring mtg., Washington, D.C. (M. W. Warga, Executive Secretary, 1155 16th St., NW, Washington, D.C. 20036)

14-15. **Forum on Geology of Industrial Minerals**, 4th annual, Austin, Tex. (W. L. Fisher, Bureau of Economic Geology, Univ. of Texas, Austin 78712)

14-15. **Neurohumoral Control of the Circulatory System**, 7th natl. symp., Philadelphia, Pa. (F. R. Johnson, Heart Assoc. of Southeastern Pennsylvania, 318 S. 19 St., Philadelphia 19103)

14-16. **Arizona Acad. of General Practice**, Tucson. (P. R. Boykin, Executive Secretary, P.O. Box 441, Scottsdale, Ariz. 85252)

14-16. **Biomathematics and Computer Science in the Life Sciences**, 6th annual, Houston, Tex. (Office of the Dean, Univ. of Texas Graduate School of Biomedical Sciences at Houston, Division of Continuing Education, P.O. Box 20367, Houston 77025)

14-20. **Marquette Univ. Medical Alumni Assoc.**, clinical conf., Palm Springs, Calif. (R. H. Herzog, Executive Secretary, The Association, 561 N. 15 St., Milwaukee, Wis. 53233)

15-16. **State Mental Health Representatives**, 14th annual, Chicago, Ill. (W. Wolman, Dept. of Mental Health, 535 N. Dearborn St., Chicago 60610)

18-20. **Lubrication and Lubricant Rheology**, symp., Ann Arbor, Mich. (W. O. Winer, Dept. of Mechanical Engineering, 225 West Engineering Bldg., Univ. of Michigan, Ann Arbor 48104)

18-20. **American Acad. of Pediatrics**, spring session, Atlanta, Ga. (G. E. Hughes, Secretary for Meetings, 1801 Hinman Ave., Evanston, Ill. 60204)

18-20. **Psychedelic Drugs**, Hahnemann Medical College and Hospital meeting, Philadelphia, Pa. (B. L. Segal, Program Chairman, Hahnemann Medical College and Hospital, 230 N. Broad St., Philadelphia 19102)

18-20. **Systems Analysis and Social Change Forum**, Washington, D.C. (L. E. Root, American Inst. of Aeronautics and Astronautics, 1290 Sixth Ave., New York 10019)

18-21. **American Physical Soc.**, Berkeley, Calif. (W. Whaling, California Institute of Technology, Pasadena 91109)

18-21. **American Radium Soc.**, annual mtg., Miami Beach, Fla. (J. L. Pool, Executive Secretary, Memorial Hospital, 444 E. 68 St., New York, N.Y.)

# Here's What's Happening in Biology at HRW

## MODERN EMBRYOLOGY

Charles W. Bodemer, University of Washington

This text provides an introduction to the general principles of embryology and a survey of developmental anatomy and physiology. The author combines descriptive and experimental embryology and draws material from molecular biology and a variety of disciplines comprising modern developmental biology. Emphasis is placed on the *mechanisms of development* and the *functional development* of the embryo.

May 1968 512 pp. \$8.50 (tent.)

## EXPERIMENTAL PHYSIOLOGY: Experiments in Cellular, General, and Plant Physiology

Arnold S. Dunn, University of Southern California, and Joseph Arditti, University of California, Irvine

*Experimental Physiology* illustrates basic concepts and explores biological phenomena at the biochemical, biophysical, cellular, and organismic levels. The experiments range from somewhat complex biochemical problems to more classical plant, animal, and general physiology experiments. The use of a large variety of living materials from both the plant and animal kingdoms emphasizes the unity of living processes as well as the diversity required by specialization.

April 1968 328 pp. \$6.95 paper (tent.)

## STRUCTURAL CONCEPTS IN IMMUNOLOGY AND IMMUNOCHEMISTRY

Elvin A. Kabat, Columbia University

Professor Kabat's text introduces modern thinking in immunology and immunochemistry to students of biology, biochemistry, and medicine. The author develops his subject from a structural viewpoint, indicating similarities to reactions involving macromolecules. To give the student the vocabulary of immunology, he also emphasizes the similarities between immunological concepts and those of biology and biochemistry. (*Molecular and Cellular Biology Series*)

March 1968 352 pp. \$9.95 cloth (tent.)  
\$6.50 paper (tent.)

## ULTRASTRUCTURE OF FERTILIZATION

C. R. Austin, Cambridge University

This advanced book summarizes current research on the fine structure of gametes and fertilization and provides the cell biologist with enough procedural data to extend and evaluate his own investigations. Many electron micrographs highlight the illustrations in the book. (*Biology Studies*)

April 1968 160 pp. \$4.95 (tent.)

## FORTHCOMING PAPERS IN BIOCHEMICAL GENETICS

Geoffrey Zubay, Columbia University

A collection of recent as well as classical papers in biochemical genetics covering the identification of genic material, DNA synthesis and chromosome duplication, gene recombination and repair, chemical mutagenesis, RNA synthesis, protein synthesis, and regulation.



**Holt, Rinehart and Winston, Inc.**  
383 Madison Avenue, New York, New York 10017

# This is a Classified Ad

The program is company secure and company funded. Electro-Optical Systems and its parent company, the Xerox Corporation, have already made important strides forward in the development of new systems for medical diagnosis. The need now is for highly-qualified personnel to fill important managerial and leadership positions within this ongoing program... a program which has real meaning for the future of the medical sciences.

**Management-Senior Scientist.** Manage and direct a product development biochemistry team. Extensive experience required in pharmaceutical or chemical product development. Prefer multidisciplined strengths in chemistry or biochemistry, chemical engineering, and instrumentation.

**Quality Assurance Manager, Biochemist or Chemist.** Requires extensive experience in pharmaceutical and chemical product development. Must be familiar with cost effectiveness and predictive reliability models.

**Quality Assurance Reliability Chemist.** Entails development of analytical procedures. Desire several years industrial analytical laboratory experience.

**Project Leaders-Ph.D Biochemists.** Recent doctoral graduates and experienced Ph.D Biochemists are needed to probe and resolve analytical problems.

Experience in preparing and processing labile biochemicals is desirable.

**Instrumentation, Electrical Engineers.** Desire design background with optical and digital systems. Information processing and control systems experience preferred.

**Instrumentation Engineers-Mechanical.** Requires highly creative individuals to design high-speed, small mechanisms, and electromechanical machinery; involves advanced concepts analysis and studies. Will also test, evaluate, and improve existing machine designs.

A variety of other positions are currently available in the fields of chemical engineering, biochemistry, microbiology, radiology, electronic, mechanical and systems engineering and data processing. Send your resume or request for further information to David C. Phillips. Better yet. Call him personally... collect. 213-351-2987.



**Electro-Optical Systems, Inc.**  
a Xerox Company

302 North Halstead St. Pasadena, Calif. 91107

## Personnel Placement

### POSITIONS WANTED

**Biologist, Ph.D.** Seeks position teaching biology and ecology. Box 46, SCIENCE. 2/23; 3/1, 8

**Business Administrator,** life-science research and college financial management, building, personnel, accounting. Box 35, SCIENCE. X

**Cell Physiology—Biochemistry.** Ph.D. 1957. Extensive experience in CNS research, particularly electrolyte and amino acid transport. Seeks research position, welcomes teaching responsibilities. Box 68, SCIENCE. 3/8, 15

**Chemist-Biochemist.** Fifteen years of teaching with publications and grants. Wishes professorship with emphasis on teaching, possibly administration. Box 72, SCIENCE. 3/22

**Microbiology Ph.D.;** biochemistry minor; medical technology B.S.; virus research, university teaching experience; seeks research, clinical or teaching appointment: **WOODWARD PERSONNEL BUREAU,** 185 North Wabash, Chicago 60601. X

**R&D Consultant,** Washington, social sciences; 20 years' experience Federal applied research housing, urban affairs, training, manpower development, public safety, health, welfare, civil defense, mobilization planning. Systems oriented. Box 62, SCIENCE. X

**Science Publicist (consulting).** Research proposals, annual and other reports, brochures. Highest qualifications. Box 60, SCIENCE.

**Zoologist—B.A.** double major; business management and biology. M.S. zoology. Age 27, seeking junior college teaching position in biology. Publications. Box 70, SCIENCE. 3/15

**Zoologist.** Ph.D., 1965. Research interests in parasitology. Postdoctoral experience. Publications. Desires teaching/research position in progressive college or university. Available September 1968. Box 71, SCIENCE. 3/8

### POSITIONS OPEN

**WANTED EXPERIENCED CLINICAL CHEMIST TO JOIN EXPANDING INDEPENDENT MEDICAL LABORATORY IN BOSTON.**

Ph.D. desirable but not essential. Research opportunities available. Academic affiliations possible. Write, *Confidential*, to **Dir., Leary Laboratory, 43 Bay State Road, Boston, Mass. 02215.**

### DEPARTMENT OF VETERINARY PHYSIOLOGY

Western College of Veterinary Medicine  
University of Saskatchewan  
Saskatoon, Sask., Canada

Applications are invited for the position of Assistant or Associate Professor of Veterinary Biochemistry. The Ph.D. or equivalent degree are required. The level of appointment will be in the following salary scales, depending on experience—

**Assistant Professor \$ 8,700-11,700**  
**Associate Professor \$12,200-15,500**

The successful applicant will assume primary responsibility for the presentation of the basic biochemistry course to veterinary students. The appointee will be encouraged to develop a program of biochemical research and to participate in postgraduate training. The appointment will confer the privileges of joint status in the Department of Biochemistry of the College of Medicine. Excellent teaching and research facilities, capable of accommodating all species of animals, will be available in a new building to be completed by July 1968. Requests for further information or a formal application consisting of curriculum vitae and names of three referees should be submitted to **Dr. R. H. Dunlop at the above address.**

## GROUND LEVEL CLIMATOLOGY

Editor: Robert H. Shaw. AAAS Publication No. 86, 408 pages, 144 illustrations, bibliography, index, November, 1967. Retail price, \$12.50; AAAS Members' Cash Orders, \$10.50.

*Ground Level Climatology* consists of 20 papers dealing generally with the theme of weather and agriculture (including forestry) and specifically with the climate closely surrounding plants and animals—the microclimate. Investigators in the field of ground level climatology seek to understand the complex relationships between living organisms and their environment; the relation of climate to the distribution and abundance of plants and animals; the effects of weather modification on physical processes within the microclimate; and the effects of moisture, temperature, and energy balance on physiological functions.

Chapters in this book describe the effect of climate on specific plants and animals; the influence of ground level climatology on forest fires; climate and animal husbandry; plant and animal reaction to various environment. All these have far-reaching effects—both favorable and unfavorable—on plants and animals, and ultimately on man.

British Agents: Bailey Bros. & Swinfen, Ltd.,  
Warner House, Folkestone, Kent, England

AAAS  
1515 Massachusetts Ave., NW  
Washington, D.C. 20005

## UNIVERSITY OF GUELPH

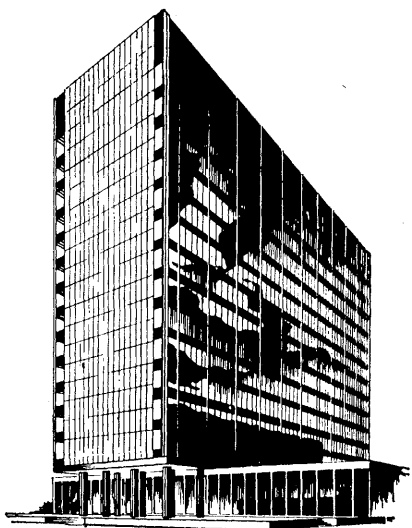
The University of Guelph wishes to appoint a Director of the Institute of Biomedical Research. The Institute is now in the planning stage, and the early appointment of the Director is desirable so that he can participate in all aspects of planning. The Institute, under the administration of the University of Guelph, is intended to serve the biological and medical sciences at Guelph and at the other Universities in Ontario.

The Institute will provide facilities for the production of laboratory animals and for an active educational program in laboratory animal medicine and technology. The director will be expected to initiate and stimulate research and educational programs in comparative medicine.

The Director will be a member of the faculty of the University of Guelph with an academic appointment in an appropriate department.

Applicants must have advanced training in biological and medical science and, preferably, considerable experience in comparative medicine.

Applications and enquiries should be addressed to the Associate Dean (Research), Ontario Veterinary College, University of Guelph, Guelph, Ontario, Canada.



## SENIOR SCIENTISTS

### What will help you do your best work?

Answering that question, we think, may well bring you to Hoffmann-La Roche.

One of the world's most noted pharmaceutical houses, Roche has achieved an enviable record of growth and achievement, by developing a research environment conducive to original ideas and speculative thinking.

Add to that the support of an outstanding *staff*, in depth, in many disciplines.

And to that, *facilities and equipment* on a scale equalled in few places in the world, plus complete services.

And encouragement to *publish*, and maintain contacts with universities, research institutes, government laboratories.

Only a visit can really convey the magnitude, the spirit, and the quality of the research effort.

These are current opportunities to join Roche.

**SENIOR PHARMACOLOGIST** — Ph.D. with 1-3 years experience in neurophysiology or neuropharmacology, to conduct research on the action of CNS drugs in electrophysiological processes.

**SENIOR PHARMACOLOGIST** — Recent Ph.D. interested in reproductive physiology or endocrinology.

**SENIOR PHARMACOLOGIST** — Ph.D. with experience in renal physiology, to participate as a member of the cardiovascular research section.

**SENIOR PATHOLOGIST** — Experienced DVM with postgraduate training in pathology, interested in performing evaluations of animal tissues from toxicity studies; also some opportunity to conduct research.

**SENIOR BIOCHEMIST** — Ph.D. with up to 4 years experience in techniques involving proteins and/or enzyme separations, fractionations, purifications, and characterizations. To be associated with newly formed group investigating the biochemistry of reproductive fluids.

**SENIOR LITERATURE CHEMIST** — Ph.D. in organic chemistry with knowledge of French and German. Responsibilities include selecting, indexing and abstracting articles from foreign publications dealing with our products and our areas of interest.

**SENIOR CYTOGENETICIST** — Recent Ph.D. with some experience in developmental genetics, cell biology or microbiology. To participate in research programs designed to investigate spontaneous and experimental alterations of chromosome duplication.

Please direct resume, in confidence, to: Richard H. Stevenson, Personnel Administrator, Dept. S31



# HOFFMANN-LA ROCHE, INC.

Nutley, New Jersey 07110

An Equal Opportunity Employer M/F

**POSITIONS OPEN**

**INDIANA STATE UNIVERSITY  
TERRE HAUTE, INDIANA**

Dynamic growing life science department with doctoral program in search of young staff members for teaching-research, state-financed appointments, Sept. 1968. (1) Ultrastructure biologist: to develop course and research program. New high resolution E.M. facility supplied. (2) Virologist-immunologist; new virology teaching-research laboratory in need of staff to develop virology program. (3) Biochemist (protein): to develop biochemistry program jointly with staff of chemistry department. (4) Limnologist: to broaden strong existing program in ecology. (5) Plant physiologist: to give critical mass to existing staff, interest in plant growth regulators preferred. Apply to: **W. S. Silver, Chairman, Dept. of Life Sciences, Indiana State University, Terre Haute, Indiana.**

**MEDICAL MICROBIOLOGIST, M.D. or Ph.D.,** to direct Division of Microbiology in large teaching hospital center, New York City. Hospital experience essential. Write, stating full details. Include curriculum vitae and bibliography.

Box 49, SCIENCE.

**MICROBIOLOGIST**—Private foundation needs Ph.D. as assistant to director of a modern well-equipped medical research laboratory in Philippines. Opportunity for individual research as part of a broad clinical, epidemiologic, pathologic and microbiologic program in leprosy research. Appointment for preliminary orientation period in U.S. University and 18 months overseas duty. Salary \$10,000 plus travel expenses and overseas bonus. Send resume and references to: **C. V. Reich, Ph.D., Leonard Wood Memorial, Johns Hopkins School of Hygiene, 615 North Wolfe Street, Baltimore, Maryland 21205.**

**Florida, Miami  
Museum of Science and Planetarium  
Director**

Someone to assume full responsibility for a growing science museum with an extremely active education program and the responsibility of a major S.T.P. Planetarium installation. Please send photo and full vita to:

**V. J. Cabianni, Museum of Science and Planetarium, 3280 South Miami Avenue, Miami, Florida 33129.**

Professional Staff Position  
**RESEARCH  
PHARMACOLOGIST**

Expanding research programs at SK&F have created the need for a research pharmacologist to supervise and participate directly in laboratory programs on the respiratory system.

Duties will include overall responsibility for initial testing, evaluation of data, selection of compounds for secondary testing, development of new methodologies, and some administrative duties connected with normal laboratory operation. The man we seek has a recent Ph.D. (or M.S. with equivalent applicable experience) and a good working knowledge of respiratory, cardiovascular and autonomic pharmacology. He should have some background in organic and biochemistry, and a working knowledge of statistics. Previous industrial research experience is desirable, but not mandatory.

SK&F offers the opportunity to participate in challenging research programs in a stimulating environment. Professional activities are encouraged. Salaries and benefit plans are excellent. Please submit your resume in confidence to **Dr. R. W. Kinney, Director of Scientific Employment**

**SMITH KLINE & FRENCH  
LABORATORIES**

1568 Spring Garden Street  
Philadelphia, Pa. 19101

An Equal Opportunity Employer  
Member of Plans for Progress



**POSITIONS OPEN**

Applications are invited for three positions, Cytology, Invertebrate Zoology, and Physiology, in the Department of Zoology, University of Minnesota, Minneapolis. Teaching responsibility will consist of a major undergraduate course and advanced courses in the appointee's area of special interest. Rank and salary will be appropriate to the appointee's experience. Inquiries concerning the positions together with a brief resumé should be directed to: **Dr. Magnus Olson, Head, Department of Zoology, University of Minnesota, Minneapolis, Minnesota 55455**

**Biochemist with Ph.D.** or equivalent training to work on a continuing project involving the biochemistry of smooth muscle. Interest in and experience with enzymology and lipid biochemistry would be helpful. Salary up to \$9,000 depending on qualifications. Applicants should write to **Dr. E. E. DANIEL, Professor and Head, Department of Pharmacology, University of Alberta, Edmonton, Alberta.** Submit curriculum vitae and three letters of recommendation.

**ASSISTANT  
TOXICOLOGIST**

Will help supervise Toxicological analysis and poison information, and will assist in teaching and research. Requires: U.S. Citizenship, master's degree with courses in Toxicology and at least 2 years related experience. Outstanding fringe benefits. Write or call collect, **Roderick Thomas, Medical Examiner's Office, 13th & Wood Streets, Phila., Pa. 19107. (215) MU 6-9700, Ext. 5177.**

**VIROLOGIST (M.S.)** to participate in diagnostic virology laboratory. Contact **Hugh F. Luddecke, M.D., Director of Laboratories, Morristown Memorial Hospital, Morristown, New Jersey 07960**

**RESEARCH  
VIROLOGIST**

Expanding research programs in our Department of Microbiology have created an additional opening on our research staff for a virologist to study the interaction of viruses with mammalian cells.

We are seeking a person with an M.S. degree with strong academic background in chemistry and the biological sciences, as well as considerable experience in cell culture and plaque inhibition assays. Previous industrial supervisory experience and exposure to animal work is desirable.

Well-equipped laboratories in the Valley Forge area offer ideal working conditions close to suburban living with easy access to the cultural and academic facilities of a major metropolitan area. Excellent benefit and salary program commensurate with training and experience. Please submit your resume in confidence to:

**ROBERT B. TURNBULL**

**SMITH KLINE & FRENCH  
LABORATORIES**

1500 Spring Garden Street  
Philadelphia, Pa. 19101

An Equal Opportunity Employer  
Member of Plans for Progress



**GRADUATE STUDY**

Applications are invited from students for post graduate studies leading to M.Sc. or Ph.D. Areas of research cover most fields of Biology including Freshwater Biology, Taxonomy, Microbiology, Physiology, Genetics and Palynology. Teaching Fellowships to the value of \$2,600 for 8 month academic year, plus summer stipend of \$1,000 available. **Dr. H. B. N. Hynes, Chairman.**

Applications to be addressed to the **Dept. of Biology, University of Waterloo, Waterloo, Ontario, Canada.**

**Graduate Teaching and Research Assistantships  
Leading to Ph.D. in Biology**

Students with B.A. or B.S. degrees in Biology, Zoology, Botany, Chemistry, Physics or Mathematics are invited to apply for predoctoral stipends of \$3,100 plus dependency allowance, annual increases and tuition remission. The Department consists of a large staff and exceptionally well-equipped modern laboratories. Active programs are underway stressing modern concepts of molecular, cellular, developmental, plant, organismal and population biology, genetics and microbiology.

For details write to **Director of Graduate Studies, Department of Biology, State University of New York, Buffalo, New York 14214.**

**GRADUATE ASSISTANTSHIPS in  
BIOCHEMISTRY and MOLECULAR BIOLOGY**

Teaching and research assistantships leading to M.Sc. and Ph.D. degrees available for academic year 1968-69. Modern laboratories with excellent facilities. Wide variety of research projects. Stipend for teaching assistantships, \$3700 plus travel allowance and remission for fees. Stipend for research assistantships for \$3000 for 12 months. Apply **Head, Department of Biochemistry, University of Alberta, Edmonton, Alberta, Canada.**

**Graduate Assistantships in Microbiology**

Appointment leading to Ph.D., \$2400-\$2800 plus remission of tuition for academic year. Variety of research projects. Positions available September 1968. For further information contact: **Dr. Arthur K. Saz, Department of Microbiology, Georgetown University Medical & Dental School, Washington, D.C. 20007.**

**RESEARCH ASSISTANTSHIPS IN  
PHYSIOLOGY**

Applications are invited for Research Assistantships from qualified students wishing to work towards the M.Sc. or Ph.D. degrees. Stipend range \$3,000-\$3,600 p.a. Write for further information to: **Dr. D. H. Copp, Head, Department of Physiology, University of British Columbia, Vancouver 8, B.C., Canada.**

**RADIOLOGICAL HEALTH TRAINEESHIPS**

Graduate program leading to M.S. degree. Financial support includes full tuition, fees, tax-free stipend from \$3,000 to \$4,800 per year, depending on background, and a dependency allowance of \$500 per year per dependent. For further information, write to **Dr. H. Cember, Technological Institute, Northwestern University, Evanston, Illinois 60201**

**The Market Place**

BOOKS • SERVICES • SUPPLIES • EQUIPMENT

**SPRAGUE-DAWLEY, INC.**

Pioneers in the development of the  
**STANDARD LABORATORY RAT.**

P.O. Box 4220

Madison, Wisconsin

CE 3-5318