

Index of Advertisers—8 September 1967

Academic Press	1221	Matheson	1104
Ace Glass Inc.	1223	Melabs, Scientific Instruments Dept.	1096
Addison-Wesley Publishing Co., Inc.	1233	Mettler Instrument Corp.	1087
Aldrich Chemical Co.	1240	Millipore Corp.	1217
American Optical Co.	1252	Nalgene Labware Div.	1219
Applied Research Laboratories, Inc.	1241	New Brunswick Scientific Co., Inc.	1090
Armour Pharmaceutical Co.	1248	Nikon Inc., Instrument Div.	1112
Atlas Chemical	1249	Nuclear-Chicago Corp.	1122
Bausch & Lomb 1235, 1237, 1245		Nuclear Science & Engineering Corp.	1230
Beckman Instruments, Inc. 1119, 1121, 1123, 1126		Olympus Corporation of America ..	1093
Bel-Art Products	1218	Paillard Inc.	1107
Belco Glass Inc.	1220	Parr Instrument Co.	1237
Bendix Corp., Scientific Instruments Div.	1100	Pentex Inc.	1248
BioSciences Information Service of Biological Abstracts	1248	Pharmacia Fine Chemicals Inc.	1121
Blackstone Ultrasonics, Inc.	1237	Phipps & Bird, Inc.	1231
Buchler Instruments, Inc.	1231	Photovolt Corp.	1238
Cambridge University Press	1229	Plenum Publishing Corp.	1242
Canal Industrial Corp.	1226	Professional Tape Co., Inc.	1225
Chemical Rubber Co.	1247	Radiochemical Centre	1213
Clay-Adams	1118	Revco Inc.	1227
Clevite Corp., Brush Instruments Div.	1114	Royson Engineering Co.	1231
Coleman	1106	Sage Instruments, Inc.	1222
Coors Porcelain Co.	1224	Sargent, E. H., & Co.	1095
Corning Glass Works	1244	Schleicher, Carl, & Schuell Co. 1214, 1215	
Digital Equipment Corp.	1102	Schwarz BioResearch	1116
E-C Apparatus Corp.	1225	Scientific Notebook Co.	1230
Edmund Scientific Co.	1213	Scientronics Inc.	1221
E & M Instrument Co.	1242	Selas Corporation of America	1242
Fabri-Tek Instruments, Inc.	1108	Sep-Ko Chemicals, Inc.	1238
Fisher Scientific Co.	1120	Siemens America Inc.	1228
Ford Motor Co.	1110	Sigma Chemical Co.	1239
Gilford Instrument Laboratories, Inc.	1115	Sobotka, Eric, Co., Inc.	1246
Hacker, William J., & Co., Inc.	1099	Sorvall, Ivan, Inc.	1101
Harford Metal Products, Inc.	1234	Spectralab	1246
Harvard Apparatus Co., Inc.	1230	Spectra-Physics	1085
Heath Co.	1167	Teachers Insurance and Annuity Assoc.	1216
Hewlett-Packard	1105	Technicon Corp.	1113
Honeywell, Industrial Div.	1111	Tektronix, Inc.	1094
Hyland Div., Travenol Laboratories	1227	Tenny Engineering Inc.	1217
Instron Corp.	1091	Thermolyne Corp.	1240
Instrumentation Associates, Inc.	1248	Tracerlab	1224
Instrumentation Laboratory Inc.	1109	Unitron Instrument Co.	1097
Instrumentation Specialties Co., Inc.	1217	U.S. Stoneware	1226
Johnston Laboratories, Inc.	1098	Wang Laboratories, Inc.,	1232
Klett Manufacturing Co., Inc.	1227	Warner-Chilcott Instruments Div.	1244
Kontes	1239	Whittaker Corp., Gencom Div.	1218
Labindustries	1168, 1169	Wild Heerbrugg Instruments, Inc.	1243
Lab-Line Instruments, Inc.	1122	Wilkens-Anderson Co.	1236
Leitz, E., Inc.	1124	Zeiss, Carl, Inc.	1170
LKB Instruments, Inc.	1251		

**50 EXTRA
MAN-HOURS**
for only

\$18⁵⁰*
per month!



CRC LABWASHER®

brings your lab advantages of automated glassware washing and drying; unequaled convenience; savings of valuable man-hours and significant reduction of labware breakage.

For only \$18.50 per month*, the CRC Labwasher can free your lab forever from the extravagance of hand washing labware. It works for you faithfully even during lunch or after the close of day . . . has clean glassware ready and waiting when needed!

Check your glassware washing problems against actual, in-the-field "Usage Reports". Request Bulletin No. S791

*Average cost of owning and operating a CRC Labwasher (over a 5 year period during which the unit was completely amortized) based on a survey of 239 Labwasher equipped laboratories.

A-5891

THE
**CHEMICAL
RUBBER**
CO.

Labwasher Division
Cranwood Parkway, Cleveland, Ohio 44128

NO

**YOU
CAN'T
BUY
STRIPED
PROPIPETTES®**



**BUT YOU CAN
CHOOSE FROM 4 COLORS...
YELLOW/RED/BLUE/GREEN \$7.60
as well as BLACK each**



Available from your local supply house or contact:
INSTRUMENTATION ASSOCIATES, INC.
17 West 60th St. New York, N.Y. 10023 (212) CI 5-0840

Demand the original i/a Propipette — Proven by thousands of users

if your field is mycology . . .

you now have a custom, computer-generated information service:

ABSTRACTS OF MYCOLOGY

FOR MONTHLY REPORTS ON: FUNGI IN BIOCHEMISTRY, CYTOLOGY, GENETICS, MICROBIOLOGY (medical and industrial), PATHOLOGY (plant and animal), SYSTEMATICS

FROM: 6,900 JOURNALS PUBLISHED IN 91 COUNTRIES—COMPUTER-SEARCHED FROM BIOLOGICAL ABSTRACTS TO YIELD ALL MYCOLOGY PAPERS.

ABSTRACTS OF MYCOLOGY IS FOR YOUR DESK:

1. Cut out the abstracts for your personal card file (abstracts printed within 3 x 5 frames on one side of page only).
2. Find specific reports quickly in the Author or Biosystematic Index.
3. You will receive a cumulative Subject Index at the end of each volume.
4. You can afford this computer-generated, special information service, priced for individual use at \$1.87 per month.

ABSTRACTS OF MYCOLOGY IS PUBLISHED BY BIOSCIENCES INFORMATION SERVICE OF BIOLOGICAL ABSTRACTS. DR. CHESTER R. BENJAMIN, PRESIDENT, THE MYCOLOGICAL SOCIETY OF AMERICA, IS CHAIRMAN OF THE EDITORIAL ADVISORY COMMITTEE.

Subscription for 1967—\$22.50
(special NSF supported rate).
\$30 in 1968.

Send your check for \$22.50 to: BioSciences Information Service of Biological Abstracts, 2100 Arch Street, Philadelphia, Pa. 19103. You will receive all back issues.

Research Scientist Biochemistry

An excellent opportunity currently exists in our biochemistry department for a Ph.D. with interest in natural products of therapeutic importance.

Training and experience should have been in research in the isolation, purification and characterization of protein and other natural products. Experience in related areas is highly desirable.

*To learn about this position,
send a brief description
of your professional background
to Dr. S. S. Yanari*



**ARMOUR
PHARMACEUTICAL CO.**

P.O. Box, 511, Kankakee, Illinois

An equal opportunity employer

CUSTOM ANTI-SERUMS

- Prepared in rabbit, sheep or goat
- Prepared with antigen supplied by investigator
- Available in liquid or lyophilized form
- Available as whole serum anti-serum or anti-serum globulins
- Available conjugated with fluorescein isothiocyanate

For further information, write
for Technical Brochure No. 54

PENTEX INCORPORATED

P.O. BOX 272, KANKAKEE, ILLINOIS 60901

Personnel Placement

POSITIONS WANTED

Anatomist Ph.D., seeking academic position to teach gross anatomy and neuroanatomy; member of American Association of Anatomists; postdoctoral research training. Write for curriculum vitae to Box 522, SCIENCE.

Biochemist, Ph.D., 1966. Female; New Jersey area. Research in metabolic disorders. Box 535, SCIENCE. 9/15

Ph.D. Insect Toxicology (biochemistry and genetics), 3 years' postdoctorate, desires a suitable position in Canada. Box 540, SCIENCE. 9/8

Poultry Nutritionist, Ph.D., world-wide traveled, 8 years' industrial experience, seeks position with academic institution or industry. Write for details. Box 542, SCIENCE. 9/8

(a) **BACTERIOLOGY, SEROLOGY Ph.D.**; medical microbiology preventative medicine experience desires clinical or public health appointment.

(b) **ANIMAL REPRODUCTION Ph.D.**, biochemistry, physiology minors; seeks research opportunity. **WOODWARD PERSONNEL BUREAU**, 185 N. Wabash, Chicago 60601. X

POSITIONS OPEN

Health Science Administrator—The Air Quality Criteria Activity, National Center for Air Pollution Control, is interested in hiring a biological scientist or physician to participate in development of criteria of air quality for atmospheric pollutants. Experience in laboratory investigation, field studies or teaching is desired. Aptitude for medical writing is particularly desired. Part time employment of retired persons may be possible. Position is career civil-service and U.S. citizenship is required. There is no discrimination in employment. Please write: **Air Quality Criteria, Room 2516, National Center for Air Pollution Control, Washington, D.C. 20201.**

PHYSIOLOGIST/ PHARMACOLOGIST

—Ph.D.—

Seeking a Ph.D. in Physiology or Pharmacology with interest and some training in the gastrointestinal system. Person will participate in the planning, investigating and evaluating research in a program designed toward developing new chemotherapeutic agents for use in gastrointestinal disorders. Will supervise a group of 2 to 3 junior scientists. Position offers an opportunity to work closely with scientists trained in a variety of disciplines. Company offers a liberal salary and benefit plan. Please send resume and salary requirements to: **CYRUS M. GREENBERG, Ph.D.**, Director of Scientific Employment.

**SMITH KLINE &
FRENCH LABORATORIES**

1542 Spring Garden Street
Philadelphia, Pa. 19101

An Equal Opportunity Employer

- (a) **PULMONARY PHYSIOLOGIST** research industrial chest diseases; \$15,000; training facility; MidW. (b) **BIOCHEMIST** head clinical dept. 500-bed univ hosp; \$20,000; MidE. (c) **PSYCHOLOGIST** new guidance clinic \$15,000; S. (d) **ENVIRONMENTAL HEALTH MGR** air, water, health hazard studies \$14-16,000; chemical firm; E. (e) **BIOCHEMIST** supv dept large private lab serving hosps; \$15-25,000; W. (f) **VETERINARY PATHOLOGIST** head hematology sect; \$15,000 up; research lab; SE. (g) **PROF MICROBIOLOGY** 10 mo \$10-14,000; speciality college MidW. Write **WOODWARD MED PERS BUREAU**, 185 N. Wabash, Chicago 60601. X

Experimental Pathologist

Upjohn

New Research position now open in our department of Metabolic Diseases. Candidate must have Ph.D. and/or D.V.M. and be capable of independent research. Reporting to the Department Head, scientist will conduct his own research and as a co-investigator provide pathology support for studies in reproduction, diabetes, atherosclerosis, obesity and gastroenterology, e.g., experimental surgery, histochemistry, electron microscopy and/or autoradiography. He will not be responsible for regular drug toxicology. Strong research interest is essential.

Please send vitae to M. F. Murray, Technical Employment Representative.

THE UPJOHN COMPANY

Kalamazoo, Michigan 49001

Equal Opportunity Employer

- (a) **CLINICAL CHEMIST, Ph.D.**, to be Assistant Director of Dept. of Chem.; experienced in supervision and operation of clin. chem. lab., incl. automated equipment; opportunities for research.
- (b) **TOXICOLOGIST**, preferably M.D. or Ph.D., extensive experience in analytical toxicology for position as CHIEF TOXICOLOGIST in large clinical laboratory; primarily research and development plus consultation to routine toxicological lab.
- (c) **CLINICAL CHEMIST, Ph.D.**; experienced in methodological research and development, automated and/or non-automated techniques; excellent modern facilities and equipment.
- (d) **BIostatistician** to head up quality control program in large clinical laboratory and do research in quality control and the application of statistics to the clinical laboratory field. IBM 1440 and 1800 systems available.

Apply, with resume for (a) and (b) to S. L. Jacobs, Ph.D., Director, Dept. of Chem.; (c) & (d) to V. J. Pileggi, Ph.D., Director of Research, BIO-SCIENCE LABORATORIES, 7600 Tyrone Ave., Van Nuys, Calif. 91405.

BIOLOGICAL DATA ANALYST

Excellent opportunity to join the international research and development group of this prominent pharmaceutical company.

Prefer candidate with M.S. degree in biology and 2 to 3 years' experience in drug safety evaluation in the pharmaceutical industry. Will consider candidate with laboratory or appropriate administrative experience in lieu of advanced degree.

Duties involve investigating and summarizing toxicologic and pharmacologic data in order to establish drug safety and other biological requirements for international projects.

We seek an alert professional who can communicate effectively with all levels of management and serve as liaison between our domestic and international research groups.

Please send resume including salary requirements to:

W. J. HOWELLS

**SQUIBB
INTERNATIONAL**

460 Park Avenue
New York, New York 10022

An Equal Opportunity Employer

EXPLORATORY ENTOMOLOGIST—State of Hawaii civil service position involving extensive travel in the United States and foreign countries to locate natural enemies of agricultural pests adaptable to biological control. Requires graduation from college with degree in entomology and 6 years' experience in insect pest research, of which 2 years shall have been in a supervisory capacity. \$8,508-\$11,388. Write **Dept. of Personnel Services, 825 Mililani Street, Honolulu, Hawaii 96813.**

Research Administrator:

With or without experience in administration. Research and advanced course work in Biomedical Sciences desirable. Located in pleasant academic environment. Please send resume including salary history to **The Ohio State University Research Foundation, 1314 Kinnear Road, Columbus, Ohio 43212.**

MASS SPECTROSCOPIST

The Research & Development Department of **WYETH LABORATORIES, INC.**, a large pharmaceutical company operating in the U.S. and throughout the world, is planning to appoint a Mass Spectroscopist to assume responsibilities for the operation of a mass spectrometry unit at their Radnor, Pa., Laboratories.

On January 1, 1968, this unit will be equipped with an AEI MS902C1 high resolution mass spectrometer and a data acquisition system, including the PDP8 computer, permitting the automatic processing of mass spectra. Additionally, the services of WYETH's RCA Spectra 70 Computer will be available to provide a full element-mapping capability as required.

The mass spectrometry unit will be expected to provide a routine service for the Research & Development Divisions of the Company, and to play a fundamental role both in the characterization of human and animal metabolites of WYETH drugs, and in the identification of trace impurities present in marketed products. The successful applicant will have the opportunity to conduct basic research in the development and extension of the mass spectrometry technique.

The Radnor Laboratories are situated in a pleasant suburban area, some 15 miles Northwest of Downtown Philadelphia. Many centers of higher learning are located in the Philadelphia area.

Send Resume, In Complete Confidence, To:
RESEARCH ADMINISTRATOR



**WYETH
LABORATORIES**

P.O. BOX 8299

Philadelphia, Pa. 19103

An Equal Opportunity Employer

Important and Responsible
Opportunities in

PHARMACEUTICAL REGISTRATION

Growth and new ideas in our Government Registration Department have created this opportunity at Abbott Laboratories, one of the nation's largest makers and marketers of health care products.

First—you will be joining a major, growing research-oriented company. Second—you will become part of a team helping to market health care products. It's a job worth doing.

Abbott's research, development and clinical activities rely on our Government Registration staff. The responsibilities are great. Personal qualifications must be high. For supervisory and specialist positions, Abbott demands a graduate background in physical or life science plus varying degrees of experience in compiling and filing IND's and NDA's. With supervisory positions, some travel and direct government contact are involved.

If your interests and background seem to fit this work, please send your resume in complete confidence to:

E. W. Weidenfeller
Professional Employment

 **ABBOTT LABORATORIES**
North Chicago, Illinois 60064

An Equal Opportunity Employer

RESEARCH PHARMACOLOGIST CARDIOVASCULAR

The Pharmacology section of our Biomedical Research Department has an opening for a Research Pharmacologist. Incumbent will participate in screening activities but primary emphasis will be on planning and conducting in-depth studies to evaluate the effect of drugs on Cardiovascular-Renal functions. The opportunity also exists for individual's exploratory research.

Minimum requirement is a Ph.D. in Pharmacology with concentration in the Cardiovascular area. Some industrial or post doctoral experience is desirable, but not mandatory. The position should appeal especially to recent graduates confident of their ability and desirous of the opportunity to contribute to a young and vigorous research program offering career growth potential.

Our new modern laboratories are in a suburban location offering excellent living accommodations removed from but with ready access to larger metropolitan areas. Salaries and benefits are competitive.

To investigate this opportunity to assume an important role in a professional research group, please send details of education, experience and salary requirements to:

R. A. GRUBB
DEPARTMENT 200

 **ATLAS**
CHEMICAL INDUSTRIES, Inc.

Wilmington, Delaware 19899

An Equal Opportunity Employer

IMMUNOLOGISTS— BIOCHEMISTS

Diagnostic Product Development

Participation, freedom, security, remuneration, and research stimulation, in an academic area. Inquire: Dr. H. Cohen, Princeton Laboratories Inc., P.O. Box 534, Princeton, N.J. 08540

(a) Microbiologist, M.S. & (b) Virologist, M.S. to participate in clinical study of sterile environment in the treatment of leukemia. Large teaching & research center. Write to Mr. H. Warrington, Personnel Dept., Maimonides Medical Center, 4802 Tenth Ave., Brooklyn, N.Y.

The Market Place

BOOKS • SERVICES • SUPPLIES • EQUIPMENT

AUTHORS WANTED BY NEW YORK PUBLISHER

Your book can be published, promoted, distributed by a reliable company on a subsidized basis. Fiction, non-fiction, poetry, scholarly, scientific and even controversial manuscripts welcomed. For Free Booklet write Vantage Press, Dept. SC, 120 W. 31 St., New York 10001.

CUSTOM ANTISERUMS

Prepared to Your Antigen

Standard Antiserums in Stock

NORMAN CAPPEL LABORATORY

Box 156, Downingtown, Pa. 19335

215-269-0275

CUSTOM SYNTHESSES

Materials for Biochemical Research

Organic compounds, Reagents, Buffers, Immunosorbents, Solid Enzymes, etc.

V. Peter Kreiter, Ph.D.

RED HOUSE LABORATORY

Pratham Road, Glenwood, N.Y. 14069

HISTOPATHOLOGIC DIAGNOSIS

Center directed by pathologist with experience in mouse, rat, hamster, guinea-pig, rabbit, dog and monkey histopathology (especially toxicologic tests, tumors, radiopathology), accepts microscopic slides for diagnosis. **PATHOLOGY CENTER, 1 Second Street, Warwick, N.Y. 10990. Phone: 914-986-2108.**

1919 - 1967

LaMotte Chemical

Chestertown, Maryland, U.S.A.

Specialists in

Colorimetric Techniques

Reagents-Standards-Comparators

Send for illustrated Controls Handbook

Dept. H

HISTOLOGY SERVICE

RAPID SERVICE Large Orders Quickly Processed! Quickly Shipped! Professional supervision of every order. Free estimates on special problems. Distant points serviced swiftly. Special stains and techniques available. Full protected shipments. **HISTOLOGY SERVICE, INC.** 4801 N. Broad St., Philadelphia, Pa. Zipcode 19141. (215) Davenport 4-5800.

• HYPOPHYSECTOMIZED RATS

Shipped to all points via Air Express

For further information write

HORMONE ASSAY LABORATORIES, INC.

8159 South Spaulding Ave., Chicago 29, Ill.



IN THE SERVICE OF SCIENCE



The Answer is the Ultrarac[®]!!!

The NEW ULTRORAC is the smallest fraction collector with a 200 standard test-tube capacity.

Having rugged precision it is as dependable as the world-famous RadiRac. Remove a ten-tube rack, it continues working — put it in the cold, it continues working — treat it roughly, it continues working — preset the run to end at 50 fractions and it stops at your command.

We guarantee it for 3 years too.

- ✓ Designed to Save Space
- ✓ Designed for Coldroom use
- ✓ Designed for Standard test tubes
- ✓ Compact, removable electronic unit for remote control
- ✓ For time, drop and volumetric capabilities
- ✓ Stainless steel column-support rods — polypropylene racks
- ✓ Provision for event marking
- ✓ Power outlet for flow pump



LKB INSTRUMENTS INC • 12221 PARKLAWN DRIVE • ROCKVILLE Md 20852

OTHER
HEADQUARTERS
FOR SALES
AND SERVICE

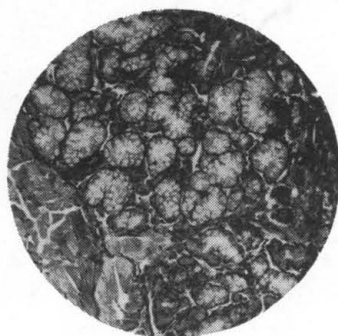
SWEDEN
LKB-Produkter AB
Box 76,
Stockholm—Bromma 1

UK
LKB Instruments Ltd.
LKB House, 137 Anerley Road,
London, S.E. 20

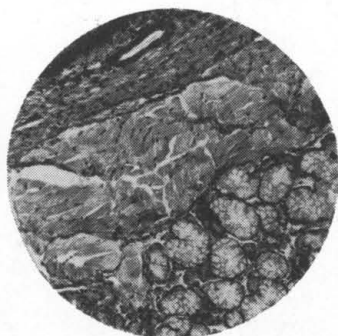
NETHERLANDS
LKB-Produkten N.V.
Zeekant 35,
The Hague

DENMARK
LKB Instrument A/S
Amagerbrogade 34,
Copenhagen S

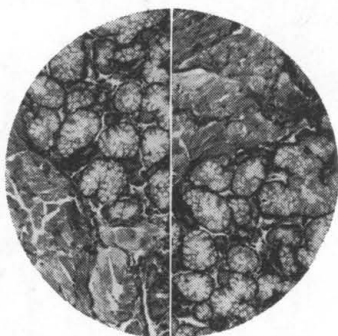
Can you recall these details...



when examining these?



Compare them simultaneously with AO's Duo-Star Microscope.



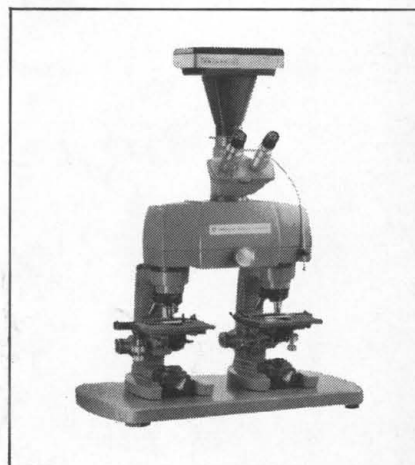
You view two specimens side by side with the split field of AO's unique Duo-Star Microscope. No guesswork. No back-and-forth specimen changes. No chance of memory playing tricks.

The rugged optical bridge connects two of AO's famous Microstar Laboratory Microscopes. A movable vertical line divides the two images. It is moved transversely so that either field can be viewed individually, or portions of both fields can be viewed simultaneously. You can match,

compare and study specific areas of interest.

Either binocular or trinocular bodies can be accommodated. An optional viewing screen fits on the third tube of the trinocular body to facilitate teaching and group observation. Or this third tube will accept an optional camera for photomicrography.

Unless you possess total recall, investigate the Duo-Star Microscope. Just contact your AO Sales Representative or write for more facts.



AMERICAN OPTICAL COMPANY

INSTRUMENT DIVISION • BUFFALO, NEW YORK 14215