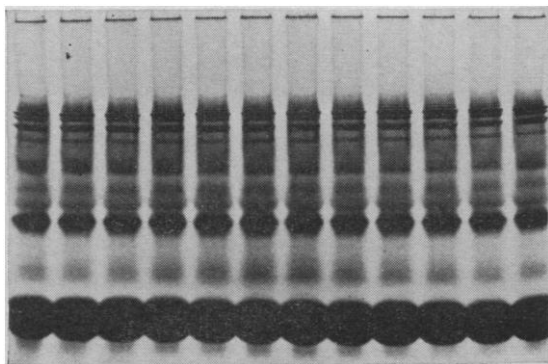


**if discontinuous  
electrophoresis means  
something to you...  
so will our E-C 470  
vertical gel cell.**



The discontinuous ("Stacked Gel") method showing 12 separations of the same serum.

The discontinuous, or "Stacked Gel" method rounds out the E-C 470 as the most versatile apparatus in its field.

- Separates 12 samples simultaneously on the same gel. Flat gel eliminates difficulties of cylindrical form for densitometer readings.
- Preparative separations are easily eluted.
- True two-dimensional gel electrophoresis for even greater resolution.
- Rapid separations for screening of hemoglobins or serum proteins with fully developed techniques.
- Favored in specialized research on lipoproteins, histones, and enzyme systems.

CIRCLE READER SERVICE  
CARD FOR  
"Total Electrophoresis System"  
"Stacked Gel Electrophoresis"

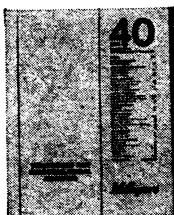
**E-C APPARATUS CORPORATION**  
ELECTROPHORESIS & COUNTERCURRENT  
220 S. 40th Street • Philadelphia, Pa. 19104

For seminar dates, call our applications laboratory: 215-382-2204

**Technical Manual  
explains in detail  
how to use  
Millipore Filters  
for microbiological  
analysis of:**

Aerosols  
Clinical Fluids  
Drinking Water  
Rinse Waters  
Pasteurized Milk  
Beer  
Wine  
Soft Drinks  
Syrups  
Sugar Products  
Fuels and Oils  
Surfaces  
Floors  
Utensils

36 pages of illustrated procedures in ADM-40 "Techniques for Microbiological Analysis" available free of charge from



SEND FOR  
FREE COPY

**Millipore®**

**FILTER CORPORATION**  
145 Ashby Rd., Bedford, Mass. 01730

**versatility!**

**COMPACT  
INFUSION PUMP**

Model 975 accepts glass or plastic syringes from 100 to 5 ml, which are held in snap-on holders. 30-speed gearbox permits selection of synchronous speeds over a 17,000-1 range. Rates are 0.00046-154.8 ml./min.; weight is 12 lbs.

ASK FOR YOUR FREE  
COPY OF BULLETIN 975

**HARVARD  
APPARATUS CO., INC.**  
Dept. A-85, Post Office Box 17  
Dover, Massachusetts 02030

ler) will aid considerably in the description of these phenomena in eucaryotes in general. Kappy (University of Wisconsin) noted that an "uptake" mutant resistant to ethionine had a weaker cell membrane, as indicated by osmotic treatments of protoplasts. DeBusk (Florida State University) reported that conidia normally contain transport systems for all amino acids except proline. Several workers were able to lend confirmation to Wiley's (Batelle-Northwest Laboratory) suggestion that the maintenance of active uptake systems is strongly dependent upon continued protein synthesis.

Travel funds for some participants, including the foreign visitors, were generously provided by the National Science Foundation through a grant (NSF-GB4471) to the University of Michigan. Planning and operating expenses were defrayed in part by an allocation from the Institute of Science and Technology, University of Michigan, and the host institution, the Biology Division of the Oak Ridge National Laboratory, provided essential facilities, space for the last session, and a reception for the participants.

A more definitive report of the conference has been published in *Neurospora Newsletter*, Number 9, June 1966.

ROWLAND H. DAVIS

Department of Botany, University of Michigan, Ann Arbor

## Forthcoming Events

### October

23. **Research in Medical Education**, 5th annual conf., Assoc. of American Medical Colleges, San Francisco, Calif. (P. J. Sanazaro, Div. of Education, Assoc. of American Medical Colleges, 2530 Ridge Ave., Evanston, Ill. 60201)

23-25. **Vacuum Microbalance Techniques**, 6th informal conf., Newport Beach, Calif. (7500 Jefferson St., Paramount, Calif. 90723)

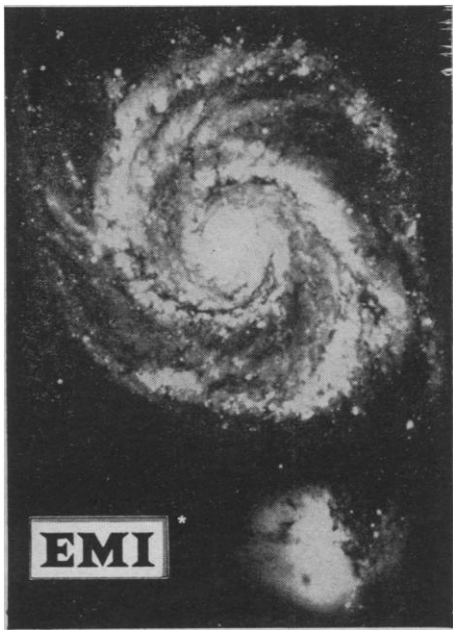
23-29. **Cancer 9th intern. congr.**, Tokyo, Japan. (Secretariat, Cancer Inst., Nishisugamo, Toshima-ku, Tokyo)

24. **American Assoc. of Poison Control Centers**, 9th annual mtg., Chicago, Ill. (M. S. McIntire, The Association, 44th and Dewey Ave., Omaha, Nebr. 68105)

24-26. **Canadian Assoc. for Applied Spectroscopy**, natl. mtg., Montreal, Que. (S. Barabas, Research Center, 240 Hymus Blvd., Pointe Claire, Que.)

24-26. **Medical Education**, symp., Beirut, Lebanon. (B. Thurston, American Univ. of Beirut, Beirut)

24-27. **Instrument Soc. of America**, 21st annual conf., New York, N.Y. (ISA, 530 William Penn Pl., Pittsburgh, Pa.)



## Measuring low light levels

...requires extremely low dark currents coupled with maximum useful sensitivity. The EMI 6256, a 13-stage venetian blind 2" photomultiplier tube has the essential characteristics that are necessary for low light level applications. The unique 10mm cathode-DI geometry, together with the ultra-stable EMI venetian blind design, has resulted in its widely successful use in astronomy, biology and spectrophotometry. The EMI 6256B has a quartz window and the S-11 cathode (S-13) which has a peak quantum efficiency of 17% at 4,200 Å. The EMI type 6256S has 5 to 10 times lower dark current than the 6256B, and should be used when system performance is dark current limited. This type is also available for visible light applications as 9502B/9502S, or with 11 dynodes as 6094B/6094S. Many other EMI photomultiplier tubes are available for special applications from stock in sizes from 1" to 12". EMI photomultiplier tubes are available through qualified engineering representatives located in major marketing areas throughout the United States. A request on your company letterhead will bring you the name of your nearest representative as well as a copy of our latest catalog.



**Whittaker**  
CORPORATION  
**GENCOM** DIVISION

80 Express St., Plainview, L.I., N.Y.  
516-433-5900 TWX 516-433-8790  
\*EMI ELECTRONICS, LTD.

24-27. **Oak Ridge** Inst. of Nuclear Studies, Medical Div., 10th medical symp., "Compartments, Pools, and Spaces," Oak Ridge, Tenn. (Chairman's Office, Medical Division, ORINS, Oak Ridge, Tenn.)

24-28. **Botany**, 3rd Mexican congr., Botanical Soc. of Mexico, Mexico City. (J. Sarukhan K., P.O. Box 19140, Mexico 19, D.F.)

24-28. **Synthesis and Characteristics of Organic Radicals**, symp., Mittenwald, West Germany. (W. Fritzsche, Gesellschaft Deutscher Chemiker, Postfach 9075, 6 Frankfurt am Main)

24-28. **Surgery, Orthopedics, and Traumatology**, intern. conf., Budapest, Hungary. (V. Hönig, Országos Traumatological Intézet, Mező Imre út 17, Budapest 8)

25-28. **American Assoc. of Blood Banks**, 19th annual mtg., Los Angeles, Calif. (The Association, 30 N. Michigan Ave., Chicago, Ill. 60602)

25-30. **Plant Stimulation**, symp., Sofia, Bulgaria. (C. I. Popoff, M. Popoff Inst. of Plant Physiology, Bulgarian Acad. of Sciences, 2 Latinka str., Sofia 13)

26-28. **Electron Devices**, intern. mtg., Inst. of Electrical and Electronics Engineers, electron devices group, Washington, D.C. (J. F. Hull, Litton Industries, 960 Industrial Rd., San Carlos, Calif.)

26-28. **Switching and Automata Theory** symp., Univ. of California, Berkeley. (Engineering Extension, Univ. of California, Berkeley)

26-28. **American Vacuum Soc.**, 13th annual symp., San Francisco, Calif. (E. E. Donaldson, Dept. of Physics, Washington State Univ., Pullman 99163)

26-29. **Society of Photographic Scientists and Engineers**, intern. colloquium on **Photographic Interaction Between Radiation and Matter**, Washington D.C. (W. S. Dempsey, Huston Fearless Corp., 1413 K St., NW, Washington 20005)

27-28. **Educational Records Bureau**, 31st annual conf., New York, N.Y. (W. S. Litterick, Educational Records Bureau, 21 Audobon Ave., New York 10032)

27-28. **Growth Hormone**, conf., New York Acad. of Sciences, New York. (E. M. Miner, The Academy, 2 E. 63 St., New York 10021)

27-29. **American Chemical Soc.**, southeastern regional mtg., Louisville, Ky. (G. L. Shoemaker, Dept. of Chemistry, Univ. of Louisville, Belknap Campus, Louisville, Ky. 40208)

28-29. **Society for Scientific Study of Religion**, annual mtg., Univ. of Chicago, Chicago, Ill. (S. Z. Klausner, The Society, 1200 17th St., NW, Washington, D.C. 20036)

29-30. **Liver Regeneration**, intern. conf., Montecatini-Terme, Italy. (M. Messini, Postgraduate School for Liver Diseases, Univ. of Rome, Rome, Italy)

30-3. **Metallurgical Soc. of AIME**, fall mtg., Chicago, Ill. (American Inst. of Mining, Metallurgical, and Petroleum Engineers, 345 E. 47th St., New York, N.Y. 10017)

31-3. **American Soc. for Metals**, 48th annual congr. and natl. metal exposition, Chicago, Ill. (The Society, Metals Park, Ohio 44073)

31-4. **American Public Health Assoc.**, 94th annual mtg., San Francisco, Calif. (The Association, 1790 Broadway, New York, N.Y. 10019)

## What's so great about DigiBit solid state logic modules?

Simplicity,  
Guarantee,  
Dependability,  
Flexibility, Accuracy,  
Economy, Stability,  
Performability . . .  
(plus a few more that don't rhyme)

BRS, digital logic equipment, known as DigiBits, has added real meaning to the advantages of solid state electronics. Researchers in psychology, toxicology, pharmacology and other disciplines are finding DigiBits can put electronics to work in ways never before possible. Parameters have been expanded, resolutions narrowed and complex experiments made feasible where electro-mechanical devices could not perform satisfactorily. In many fields the answers once considered conclusive are now subject to reappraisal.

Regardless of your research application, if there is a need to program, record and analyze data, DigiBit logic modules can do it better. The full capacity of technical achievement is here to serve you. The limit of its versatility is restricted only by your imagination and your experiment requirements.

And DigiBit solid state modules mean long equipment life. In fact, BRS puts it in writing that **all units are guaranteed to operate for an unlimited period of time when used in accordance with published specifications.**

There's a lot more to the BRS story. Enough to make a thorough investigation worthy of your serious consideration. Your questions are invited or if you have specific requirements let us know and we will tell you exactly how a system can be designed to do the job.

**BRS electronics**

DEPT. 505  
5451 HOLLAND DRIVE  
BELTSVILLE, MARYLAND 20705