



We are pleased to announce the first products of our new  
\$1,000,000 Enzyme Plant:

### HEXOKINASE

*Crystalline, From Yeast Fraction I and Fraction II\**

Activities: Almost 200% Higher than previously  
available from our former supplier.

### PHOSPHOGLUCOMUTASE

*Crystalline, From Rabbit Muscle. Ammonium Sulfate Suspension.* Activity of our first production batch—130 units/mg

### GLUCOSE-6-PHOSPHATE DEHYDROGENASE

*From Yeast*

Activity of present stock is approx. 130 units/mg,  
but we hope to improve it with experience.

As many of you have learned, we have been unable to ship all of your requirements of these and several other enzymes. Our suppliers have been either unable to meet our needs, or unable to consistently meet our specifications. Orders have been delayed and your work has been handicapped. Although we are badly overloaded already, we set out to break this unfortunate bottleneck. The result is our new Enzyme Plant . . . and an ambitious program to make Sigma more independent of unreliable outside suppliers. While it is contrary to our policy to devote our limited staff to the preparation of reagents which are already available from other laboratories, it is imperative that we undertake the production of those items which are in default. No expense is being spared to make Sigma an even more reliable supplier of the World's Finest Enzymes . . . Made in the U.S.A.!

In keeping with the Sigma policy, we are sharply reducing the price of Crystalline Hexokinase now that it is made By Sigma—no longer "pfs."

We can also offer separated Fractions I and II of Kaji, et al.,\* as well as greatly increased purity—over 300 units/mg vs. only about 100 to 130 units previously available. Activities to 700 units should be developed in the future.

Now IN STOCK for prompt shipment:

#### HEXOKINASE, Crystalline

##### Type C-130

Approx. 100-300 units/mg  
(This is the old grade)

(Formerly)  
200 units (2 mg) \$ 2.00  
1,000 units (10 mg) 6.75  
2,500 units (25 mg) 13.50

Note that the price  
is now 50% lower!

##### Type C-300 Approx. 300 units/mg

200 units \$ 3.00  
1,000 units 8.00  
2,500 units 16.00

##### Type C-301 Approx. 300 units/mg

This is essentially Fraction I of Kaji\*

OR

##### Type C-302 Approx. 300 units/mg

This is essentially Fraction II of Kaji\*

Activity of these Fractions: 1 "unit" will phosphorylate 1  $\mu$ Mole of Glucose per minute at 25° C.

200 units \$ 3.50  
1,000 units 12.00  
2,500 units 26.00  
10,000 units 100.00

Crude Grades: All crude powdered grades are in stock again, and if all goes well, we will be able to ship all normal requirements promptly.

\* Kaji, et al., Ann. of N.Y. Acad. Sci., 94, 798, (1961).

### PHOSPHOGLUCOMUTASE

2 mg — \$ 7.00      10 mg — \$28.00  
5 mg — 16.00      25 mg — 59.50

#### ORDER DIRECT

#### TELEPHONE COLLECT

from ANYWHERE in the WORLD

Day, Station to Station, PROspect 1-5750

Night, Person to Person,

Dan Broida, WYdown 3-6418



TWX (Teletype) Day or Night: COLLECT-314-556-0594

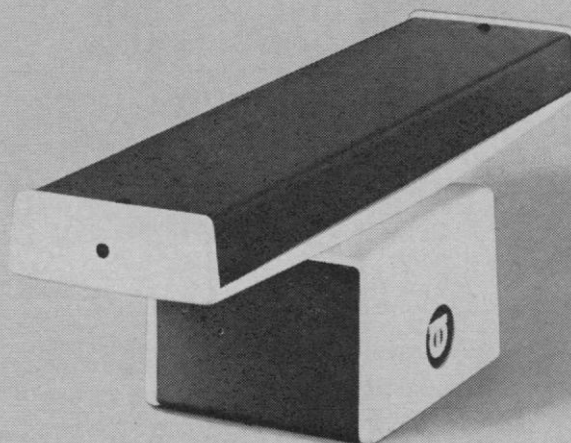
TELEGRAM: SIGMACHEM, St. Louis, Missouri

**SIGMA** CHEMICAL COMPANY  
The Research Laboratories of

3500 DE KALB ST. • ST. LOUIS 18, MO. • U.S.A.

MANUFACTURERS OF THE FINEST BIOCHEMICALS AVAILABLE

Distributed in the United Kingdom through  
**SIGMA LONDON** Chem. Co. Ltd., 12, Lettice St., London, S.W.6, Eng.  
Phone RENown 5823 (Reverse Charges)



**\$295**  
**GAS LASER**

(\$295?)

Right. Here's the world's only gas laser under \$300. Another important first for Optics Technology. We've been able to design a precision laser which we can produce for only \$295. It's our Model 170 AC Continuous Gas Laser.

Rounding out our complete line of quality lasers and laser products, the Model 170 offers:

- Adjustment-free, reliable operation
- A plasma tube with built-in reflectors
- No Brewster windows, or optics, to collect dust or get damaged
- Operation directly from the AC line by means of a built-in transformer, no other power supply involved
- Power over .3 milliwatts in TEM<sub>00</sub> mode, guaranteed
- Beam divergence less than .4 milliradians

We see great potential for the Model 170 as a basic tool in optics: for example, as an aid in aligning your apparatus. We'll be glad to send complete data. Just write \$295 Laser on a postcard (with your name and address) and mail it to:

### OPTICS TECHNOLOGY INC



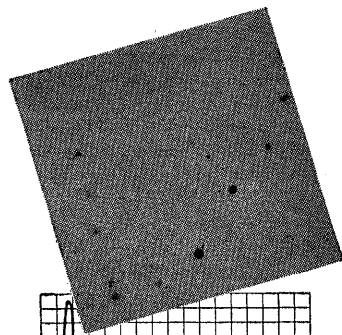
901 California Avenue, Palo Alto, Calif.  
327-6600 (Area Code 415)

In Europe, contact  
Optics Technology Instruments,  
Ghent, Belgium

# Corning is looking for a scientist with broad experience in the life sciences, for marketing management.

His job will be to manage a department which will coordinate, with imagination and insight, the work of research scientists with the needs of such disciplines as biology, medicine and oceanography. Since he will match some highly abstruse concepts to some highly practical and technical needs, he will have been working in broad areas of the life sciences for at least 5 years; and he will be familiar with marketing analysis and practices and the development of new products for the market. Please write in strict confidence to Dr. J. S. Olcott, Director, Advanced Market Development, Corning Glass Works, Corning, N.Y. 14830.

**CORNING**  
CORNING GLASS WORKS  
AN EQUAL OPPORTUNITY EMPLOYER



don't hesitate  
automate

**TLC**  
analysis  
with the  
**PHOTOVOLT**  
Densitometer

*Write for bulletin*

**PHOTOVOLT**

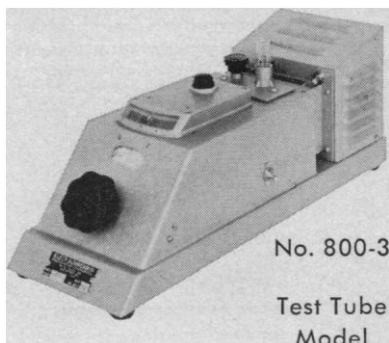
1115 Broadway, New York 10, N. Y.

## INDEX TO ADVERTISERS

26 August 1966

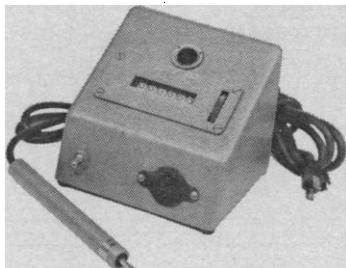
Academic Press .....	926
Adage, Inc. ....	920
American Optical Co. ....	1046
ASI Computer Division, Electro-Mechanical Research, Inc. ....	916
Bausch & Lomb .....	1031
Beckman Instruments, Inc. ....	912
Bentho Co. ....	1038
Brinkmann Instruments .....	1033
Chemical Rubber Co. ....	1036
Clay-Adams .....	917
Corning Glass Works .....	1040
Custom Scientific Instruments, Inc. ....	1034
Difco Laboratories .....	1035
Digital Equipment Corp. ....	927
Esterline Angus Instrument Co., Inc. ....	1045
Fisher Scientific Co. ....	933
Gilford Instrument Laboratories Inc. ....	1029
Glas-Col Apparatus Co. ....	919
Hamilton Co. ....	1032
Harvard Apparatus Co., Inc. ....	1038
Instrumentation Specialties Co., Inc. ....	1035
International Equipment Co. ....	921
Klett Manufacturing Co., Inc. ....	1041
Labconco Corp. ....	1030
Lourdes .....	1030
Maple Leaf .....	1044
Matheson Scientific .....	924
Mettler Instrument Corp. ....	1030
Nalge Co., Inc. ....	1036
New Brunswick Scientific Co., Inc. ....	938
Optics Technology .....	1039
Owens-Illinois .....	940
Pace Engineering Co. ....	1034
Paillard Inc. ....	1041
Philbrick Researches .....	922
Phipps & Bird, Inc. ....	1035
Photovolt Corp. ....	1040
Polaroid Corp. ....	923
Princeton Applied Research Corp. ....	935
Professional Tape Co., Inc. ....	1034
Sanborn Div., Hewlett Packard ..	932
Saunders, W. B., Co. ....	913
Shandon Scientific Co., Inc. ....	1037
Sigma Chemical Co. ....	1039
Sigmamotor Inc. ....	1041
Systron-Donner Corp. ....	936
Torsion Balance Co. ....	928
Tracerlab .....	1033
Ultra-Violet Products, Inc. ....	1038
Unitron Instrument Co. ....	931
Warner Chilcott Laboratories Instruments Div. ....	925
Wilmot Castle Co. ....	918
Worthington Biochemical Corp. ....	1030
Zeiss, Carl, Inc. ....	937

## Klett Summerson Photoelectric Colorimeter



### KLETT COLONY MARKER and TALLY

This instrument takes the drudgery and error out of the counting of bacterial colonies.



**Klett** MANUFACTURING CO., INC.,  
179 East 87th Street, New York, 28, N.Y.

## BATTERY-OPERATED MOBILE INFUSION PUMP

### MODEL ML-5

Adjustable flow rate: 1.5 to 6 ml/day

◀ Patient is completely ambulatory during continuous infusion.



A new, completely mobile miniature infusion pump has been added to the Sigmamotor series of precision infusion pumps.

The tubing pump, motor, speed control and rechargeable power pack are contained within the unit. The unit may be supported by straps or placed in a pocket.

Flow rate is variable and may be set exactly by means of a plug-in meter. The power pack supplies current to operate the pump for 70 to 100 hrs. without recharging or replacement.

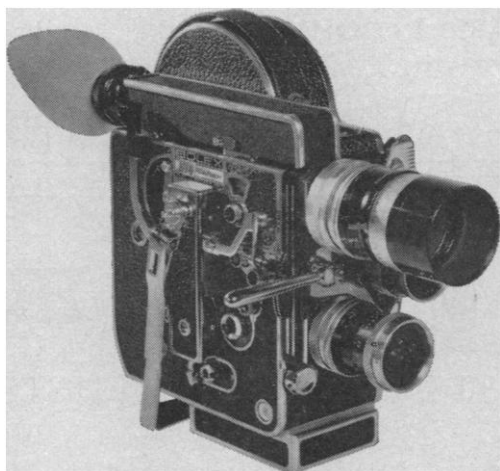
The power pack charger may be attached directly to unit for recharging or it can be used to charge a spare power pack.

Write for complete information

**SIGMAMOTOR, INC.**

68 North Main Street, Middleport, N. Y.

Phone: Area Code 716 RE 5-3411



**When we introduced  
this camera, it was  
nearly perfect. Now read  
what we've done in  
the 30 years since.**

The first Bolex H-16 16mm camera appeared in 1936. It was the most advanced camera of its day. It had such professional features as automatic threading, film rewind, variable speeds, single-frame exposure and a three-lens turret. Although it was extremely popular, we decided the Bolex had an even greater potential. So in the early forties, we added a super-accurate frame counter. Later we included the Registrator Claw to make Bolex films the steadiest in the world. And full reflex focusing and viewing. A variable shutter so you could fade, dissolve, and have greater control over exposure. And a filter slot so you could use one filter to accommodate every lens on your turret.

Today's Rex-4 has an improved reflex viewfinder, giving a full 10X magnified image. And a single-frame shaft for synchronization with audio equipment. The Rex-4 accepts a number of electric motors for shooting long sequences. And a complete range of lenses from 10mm wide angle through extreme telephoto, including macro and zoom lenses. Add the Vario-Switar 86EE zoom and the Rex-4 becomes the world's only professional camera with fully automatic exposure control—with today's Rex-4 system, you can do virtually anything!

Most of those original 1936 Bolex cameras are still in use. That's how rugged our cameras are. Try our "improved" model—it may have taken us 30 years to do it, but we think we've got the perfect camera at last. A copy of the Rex catalog will tell you all. Write Paillard Incorporated, 1900 Lower Road, Linden, New Jersey 07036.



**BOLEX**

# PERSONNEL PLACEMENT

## POSITIONS WANTED

**B.S.**, female, well experienced in biochemical and pharmacological research, presently holding position as research assistant with head of large academic pharmacology department, requires position with industry. Box 180, SCIENCE. X

**Electron Microscopist Ph.D.** Experienced in teaching and research. Publications. Desires academic teaching position. Zoology, histology, embryology background. N.W. preferred area. Box 181, SCIENCE.

### FREE RESEARCHER

Interviewing, research etc. undertaken in Europe. Willing to join scientific expeditions. **Johnson, 222 E. 50, N.Y.C.**

(a) **Pharmacognosy Ph.D.** 1966, pharmaceutical chemistry minor; seeks commercial research or teaching position. (b) **Microbiology Ph.D.**; histology minor; ASCP; clinical laboratory and cytology supervising; prefers medical appointment. Write Woodward Medical Personnel Bureau, 185 North Wabash, Chicago 60601. X

**Pharmacologist, Ph.D.** with laboratory and administrative experience, seeks position in research and development. Box 163, SCIENCE. X

**Physiologist, Immunologist, Radiologist, M.D., Ph.D.**, desires academic or research position. Research experience in immunopathology. Box 175, SCIENCE. 9/2,9,16

**Respiratory Toxicologist, Ph.D.**, radioisotope training, postdoctoral in toxicology. Available for research or academic appointment. Box 182, SCIENCE. X

**Technical Management.** Industrial biochemistry and microbiology. Two books, many publications, Fellow AAAS and other societies; 19 years' experience in sales oriented R&D and management. Prefers South but not exclusively. Salary range in twenties. Box 183, SCIENCE. X

## POSITIONS OPEN

**Biochemist - Ph.D.** Large hematology research laboratory in Philadelphia medical school. Opening for recent graduate interested in existing research programs involving enzymes and phospholipids in blood coagulation and isolation of plasma proteins. Knowledge of physical chemistry of proteins desirable. Box 184, SCIENCE.

**CLINICAL CHEMIST**—Immediate opening. 700 bed hospital. Progressive laboratory methods, modern equipment. Ph.D. required. Salary open. Primary responsibility endocrine laboratory. Apply **Personnel Director, Mon-Fri. 8:00 AM-4:30 PM**, or call collect area 313-833-4000, or send resume, including salary history to: **Harper Hospital, Detroit, Michigan 48201.**

### MICROBIOLOGIST

Private foundation with university affiliation has postdoctoral fellowship available for research training in leprosy and other mycobacterial diseases. Program divided between university and modern research laboratory, Philippines. Travel expenses provided. **C. V. Reich, Ph.D.**  
Philippine Branch  
Leonard Wood Memorial Laboratory  
Johns Hopkins School of Hygiene  
615 N. Wolfe Street  
Baltimore, Maryland 21205

### VIROLOGIST

Excellent opportunity for recent Ph.D. with training in virology and tissue culture techniques or M.S. with extensive experience to conduct study on epidemiology of ornithosis virus in domestic pigeons. Three year study. Salary \$9,441-\$11,407 (plus 3 percent increase in 1967 and 1968). Liberal fringe benefits. Write: **Dr. Frank Piraino, Milwaukee Health Department, 841 North Broadway, Milwaukee, Wisconsin 53202.**

## POSITIONS OPEN

Private Junior College in New York State needs mathematics instructor to teach College Mathematics and two years of Calculus. Full time. Potentially permanent. Send credentials to:

**William D. Young  
Dean of the College  
Bennett College  
Millbrook, New York**

### PSYCHOLOGISTS, SOCIAL WORKERS.

Immediate openings in statewide OEO adult literacy program. Minimum requirements a Master's degree in Social Work, Clinical or Counseling Psychology, Psychometrics. Salary depends on education and experience. Send personal resume and curriculum vita to: **Director of Psychological Services, STAR, Inc., 1201 First National Bank Building, Jackson, Mississippi 39201.**  
*An Equal Opportunity Employer.*

### VIROLOGY RESEARCH ASSOCIATE

To supervise cell culture and virus facilities of new University Research Institute. Bachelors or Masters Degree with experience in cell culture and virology techniques. Excellent salary, commensurate with training and experience, and opportunity to develop research abilities. Send detailed resume to the **Molecular Virology Institute, St. Louis University School of Medicine, 3681 Park Avenue, St. Louis, Missouri, 63110.**

## POSITIONS OPEN

### MANAGER-SCIENTIFIC PLANNING

Leading national multi-plant organization in the health and science industries seeks a corporate level staff scientist to headquarter in Evanston, Illinois, offices. Will identify basic trends in medicine, find and evaluate new product opportunities for company through scientific liaison with research groups, industry, government agencies, and universities. Will deal with all phases of product development from idea stage through implementation. Age 30-45, Ph.D., with biochemistry or pharmacology background. Prefer prior experience in commercial areas of product development or related product research and planning fields. Excellent compensation, benefits, and incentives. Please write **Mr. R. V. Seaman, Jr., Vice President-Personnel, American Hospital Supply Corporation, 1740 Ridge Avenue, Evanston, Illinois.**

### VETERINARY PATHOLOGIST

Hazleton Laboratories, a leading independent company specializing in the Life Sciences, needs a Veterinary Pathologist with the DVM and Ph.D. degrees. Position involves gross and microscopic evaluation of tissues from a variety of laboratory animals; design of experiments; and consultation with other research staff members. Opportunity for publications and scientific meetings attendance. Excellent employee benefits program including profit sharing. Salary commensurate with education and experience. Please send resume to:

**Hall A. Acuff  
Assistant Personnel Manager  
Hazleton Laboratories, Inc.  
P. O. Box 30  
Falls Church, Virginia 22046  
(Metropolitan Washington, D.C.)  
An Equal Opportunity Employer—M/F**

## Ph.D. PHYSIOLOGY—PHARMACOLOGY

We are presently seeking an individual with a recent Ph.D. in Physiology or Pharmacology to participate in the area of PERIPHERAL VASCULAR DISEASE research. The successful candidate will be engaged in research dealing with blood clotting through various drug compounds.

We offer an excellent starting salary, a liberal benefits package, and a campus-like suburban location to the selected applicant.

To pursue your interest further, please send a resume, in confidence, to: **MR. DAVID J. COZART, Personnel Department**

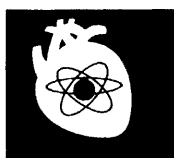


**MERCK SHARP & DOHME**  
Research Laboratories

West Point, Pa.

A suburb of Philadelphia

*An Equal Opportunity Employer*



RESEARCH



## PHARMACOLOGISTS OR PHYSIOLOGISTS

An expanding research program has created several doctorate-level positions within our Research and Development Department. Excellent research opportunities for Ph.D. physiologists or pharmacologists interested in biochemical or CNS pharmacology.

These challenging positions are located in a modern and well-equipped suburban Chicago research laboratory. Company has progressive salary and fringe benefit program including relocation allowances.

Please send curriculum vitae to:

**Dr. R. M. Gesler, Director  
Pharmacologic Research**



**BAXTER LABORATORIES, INC.**  
Morton Grove, Illinois 60053

AN EQUAL OPPORTUNITY EMPLOYER

## POSITIONS OPEN

### Clinical Chemist Ph.D.

Opportunity for Clinical Chemist interested in general clinical chemistry situated in central referral and hospital laboratories located in Los Angeles area. Extensive automation. Salary open and dependent on training and experience. Please send resume to Box 178 SCIENCE.

### M.D. PATHOLOGIST

To join with other M.D. Pathologists in the Department of Experimental Pathology of a large pharmaceutical firm, 45 minutes from N.Y. City.  
Write Box S1063, 125 W. 41 ST, NY 36  
giving full particulars  
including salary requirements.  
An Equal Opportunity Employer

### RESEARCH SCIENTIST

Ph.D. with background and or training in Endocrinology, Physiology or Pharmacology to do research in endocrinology with synthetic steroids, non-steroids, and natural products. Will be required to do efficacy and mechanism studies.

Send resume including  
salary requirements in:

Mr. Fred Rella

### Lederle Laboratories American Cyanamid Co.

PEARL RIVER, NEW YORK  
An Equal Opportunity Employer

### SCIENTISTS

Physicists, mathematicians, chemists, research engineers, statisticians, operations research analysts, systems analysts—above all, researchers who can apply the scientific method in new contexts, no matter what their discipline—will find rewarding work at the Center for Naval Analyses of The Franklin Institute.

CNA engages in operations research and systems analysis for the U.S. Navy and Marine Corps. Good salary, fringe benefits, stimulating environment, research opportunities. See the results of your work in action . . . establish yourself in a permanent career . . . perform a vital defense function.

For an interview, send letter with resume to:

James S. Hibarger  
CENTER FOR NAVAL ANALYSES  
1401 Wilson Blvd., Arlington, Va. 22209  
An equal opportunity employer

## POSITIONS OPEN

(a) **Biochemist** conduct, teach, supv clinical tests; large medical group serving many hosps; to \$18,000; Calif. (b) **Virologist, Tissue Culture** exp for cancer research; 50% time own research; \$12,000 up; new med center; MidW. (c) **Pharmacologist**, CNS research and new drug evaluation; \$18,000; drug mfr; E. (d) **Biochemist** allergy research; \$10,000; modern research lab; MidW. (e) **Asst Prof Parasitology** teach med & grad students; conduct own research; Med Sch; SW. (f) **Nutritional Biochemist** R&D feeds and fertilizers; \$10,000 up; leading mfr; MidW. Write **Woodward Med. Pers. Bureau**, 185 N. Wabash, Chicago 60601.

**LABORATORY INSTRUCTOR:** B.S. or M.S. in Chemistry or Bio-chemistry, male, to take charge of setting up laboratories in course taught as part of Ph.D. degree Program in Cellular and Molecular Biology at the University of Miami, good salary. Research in off-teaching periods, to work directly with Program Chairman: Edward L. Chambers, Medical Research Bldg., 1600 N.W. Tenth Avenue, Miami, Fla. 33136. Send résumé and salary requirements.

### INDUSTRIAL FERMENTATIONS MICROBIOLOGIST

We seek a resourceful, energetic Ph.D. Microbiologist or Biochemist with primary interest in microbiology for challenging assignment in industrial fermentations. Responsibilities require direction of several technicians in the development and improvement of antibiotics, organic acids, vitamins and other compounds, and will include work on culture studies, nutritional requirements, metabolic and physiological conditions, etc. Full latitude in experimental approaches is encouraged.

We offer liberal employee benefits and excellent working conditions in attractive Southeastern Connecticut. Write in confidence including education, experience, and present salary to: MR. D. V. VINES



**CHAS. PFIZER & CO., INC.**

Groton, Connecticut  
An Equal Opportunity Employer

## SCIENCE EDITORS

Fast-growing Science Research Associates—a leader in the educational materials field—has a number of fine openings available for science editors. If you are an experienced individual who would welcome the opportunity to make major contributions in science education, you are invited to investigate these openings:

**Science Editor**—Will assume full responsibility for development of physics-chemistry projects. Will work closely with authors and writers in helping to conceptualize programs as well as review and evaluate manuscripts. Must have at least 2-3 years' experience in the development of chemistry or physics materials. A background in teaching and an advanced degree in chemistry or physics is desirable.

**Staff Editor**—Will supervise a science editorial staff in procuring new products in science educational materials, establish production schedules and budgetary requirements. Additional duties will involve joint planning with authors, writers and consultants. Must have minimum of three years' teaching experience and at least 2—3 years' editorial and/or writing experience. An advanced degree and thorough knowledge of at least one scientific discipline is required.

These positions offer excellent salaries, full benefits and ample advancement opportunities. To arrange an early interview, direct your resume in complete confidence to: Personnel Department, Science Research Associates, 259 East Erie Street, Chicago, Illinois. A Subsidiary of IBM. SRA is an Equal Opportunity Employer



## Chemotherapists

**MICROBIOLOGIST, Ph.D. OR D.V.M.:** Interest and experience in experimental infectious diseases and broad chemotherapy screening program. Sufficiently mature and experienced to assume share of multidiscipline project leadership.

**M.S. OR B.S.:** With experience in chemotherapy of experimental bacterial infections.

The Sterling-Winthrop Research Institute is the research division of Sterling Drug Inc., one of the world's largest producers of medicinal agents. Sterling Drug manufactures professional, consumer and industrial products identified by more than a thousand brand names. The Institute employs over 600 people and is engaged in a very active pharmaceutical research program. It is near Albany, on a plateau overlooking the Hudson River Valley.

Salaries open. Excellent employee benefits include educational assistance at local colleges. Travel and moving expenses paid.

Send complete resume to C. E. Alford, Director of Personnel

**STERLING-WINTHROP RESEARCH INSTITUTE**

Rensselaer New York

An Equal Opportunity Employer

## POSITIONS OPEN

### PHARMACOLOGIST

Ph.D. to head Cardiovascular Section. Functions to include screening and development of new compounds as part of broad program. Cardiovascular background necessary, no previous experience required. Send applications to **CUTTER LABORATORIES, 4TH & PARKER STS., BERKELEY, CALIFORNIA 94710.**

"An equal opportunity employer"

### MICROBIOLOGIST

Private foundation needs Ph.D. as assistant to director of a modern well-equipped medical research laboratory in the Philippines that functions as a part of a broad clinical epidemiologic, pathologic, and microbiologic program in leprosy research. Appointments would be for 2 years with approximately 18 mo. overseas. Basic starting salary \$10,000 plus travel expenses and bonus for overseas duty. Send resume to:

C. V. Reich, Ph.D.  
Philippine Branch  
Leonard Wood Memorial Laboratory  
Johns Hopkins School of Hygiene  
615 N. Wolfe Street  
Baltimore, Maryland 21205

## POSITIONS OPEN

### Wilberforce University Wilberforce, Ohio

seeks teachers for its General Education Science Courses: Natural Science, Physical Science, Life Science. Background in geology, physics, chemistry, or biology required plus definite interest in interdisciplinary approach. Contact **James R. Davis, Academic Dean.**

### UNIVERSITY OF GUELPH

Applications are invited for a post in the Department of Microbiology at the level of Assistant Professor (salary minimum \$8500/annum). Applicant should possess a Ph.D. in microbiology; special training or interest in biophysics is preferred but other areas of specialization will be considered. Considerable scope for personal initiative in teaching and research in the applicant's area of special interest can be expected. The department has recently relocated in new, greatly expanded quarters offering excellent modern facilities and equipment. Details of terms and benefits of University appointments will be sent by return mail.

Applications should be forwarded not later than September 1, 1966, to Prof. E. H. Garrard, Head, Dept. of Microbiology, University of Guelph, Guelph, Canada, giving personal data, academic qualifications and experience and the names of three referees.

## POSITIONS OPEN

### UNIVERSITY OF LANCASTER

Applications are invited for a post of LECTURER or RESEARCH FELLOW in the Department of SYSTEMS ENGINEERING, within the salary range £1,105-£2,630. Candidates should have some experience in the area of operational research and systems analysis, and should be particularly interested in the mathematical techniques of optimisation. In addition to some teaching duties within the Department, the person appointed will be required, at least for the first year, to direct a team undertaking a systems analysis of the University Library.

Further particulars can be obtained from the Secretary of the University, Bailrigg House, Lancaster, England, to whom applications should be forwarded together with the names of three referees, not later than 16 September 1966.

## FELLOWSHIP

### POSTDOCTORAL FELLOWSHIP IN PHYSIOLOGY

Applications are invited for a Medical Research Council Postdoctoral Fellowship in the Department of Physiology. Salary will be from \$6,000 per annum, according to age and experience. The Fellow will be expected to work on problems of gastric and pancreatic secretions. Further details may be obtained by writing to: Dr. J. C. Brown, Department of Physiology.

## BIostatistician

Rapid expansion of this nationally known chemical corporation has created a growth position within our Pharmaceuticals Division.

Applicants should have Master's degree or equivalent training plus experience in the biomedical field.

As a part of an active program of Drug Research emphasizing clinical investigation—duties will include: design of experiments, analysis of biological and medical data, and preparation of technical reports which demand clear and concise presentation of statistical data.

All replies will be held in confidence. We invite you to explore this opportunity by submitting a resume with your salary history and requirements to: PERSONNEL DIRECTOR



### GEIGY CHEMICAL CORPORATION

Saw Mill River Road, Ardsley, New York  
An Equal Opportunity Employer



## CARDIOVASCULAR PHARMACOLOGIST

An expanding research program requires a Ph.D. Pharmacologist with training and/or experience in the cardiovascular area. Recent graduates will be considered if training is appropriate. Position is to head a new group with excellent opportunities for career advancement. If you are interested in learning more about this opportunity, please send resume to:

Roger G. Krantz

Special Recruitment Supervisor

### MINNESOTA MINING AND MANUFACTURING COMPANY

2501 Hudson Road

St. Paul, Minnesota 55119

An equal opportunity employer

## The Market Place

## SUPPLIES AND EQUIPMENT

### • HYPOPHYSECTOMIZED RATS

Shipped to all points via Air Express  
For further information write

HORMONE ASSAY LABORATORIES, Inc.  
8159 South Spaulding Ave., Chicago 29, Ill.

### 1966 CANADIAN MINT SETS SPECIAL @ \$3.50 PER SET

All sets contain six beautiful coins in lovely plastic holders

1965 BLUNT SETS \$5.00 PER SET  
1965 POINT SETS \$4.50 PER SET  
1964 MINT SETS AT \$5.25 A SET  
1963 MINT SETS AT \$6.50 A SET  
1962 MINT SETS AT \$8.00 A SET  
1961 MINT SETS AT \$10.00 EACH

C.O.D.'s WELCOME

SEND TO

MAPLE LEAF MANUFACTURING CO.  
16 EAST STREET  
ST. CATHARINES  
ONTARIO, CANADA

Circle 52 on Readers' Service card

## BOOKS AND MAGAZINES

### LITERATURE SEARCHING

When you're ready to do a literature search, call on ISI. The new ISI Search Service can do the job for you—quickly, efficiently and economically. Our massive data files are yours for the searching. Let us know your information problems. We'll look for the answers. Contact us immediately for details and ISI Search Service forms.

Telephone 215/923-3300, or write



INSTITUTE FOR SCIENTIFIC INFORMATION, 325 Chestnut St. Philadelphia Pa. 19106 USA





## WOULD YOU BELIEVE A Three-channel Portable Oscillo Graph with 100 cps frequency response?

It's true! And only Esterline Angus offers a Three-channel Portable Oscillo Graph.

Like the Single and Two-channel units, the Three-channel Recorder's frequency response is faster than that of any other portable oscillograph . . . 100 cps  $\pm$  10% at 30 mm peak-to-peak. It's down less than 3 db at 125 cps.

All three of the Portable Oscillo Graphs have four push-button controlled chart speeds . . . 1, 5, 20 and 100 mm per second.

A balanced differential DC amplifier (with 5 millivolt per mm sensitivity) is built into the Single-channel Re-

corde. The same amplifier in modular form is used on Two and Three-channel Recorders.

In addition, Esterline Angus Oscillo Graphs (both portable and cabinet models) employ the exclusive inkless, heatless Direct-Carbon-Transfer writing method. D-C-T chart paper costs only half as much as heat sensitive paper. You can choose either standard or reproducible (by Ozalid or Bruning processes) chart paper.

For trouble-free writing, unequalled response and economy, investigate Esterline Angus Oscillo Graph Recorders. Write for our informative Series "O" Catalog.

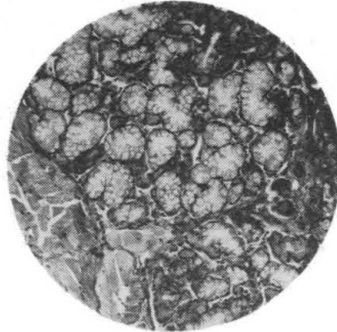
**ESTERLINE ANGUS INSTRUMENT COMPANY, INC.**  
**BOX 24000L • INDIANAPOLIS, INDIANA 46224**

*Excellence in  
 instrumentation for  
 over 60 years*

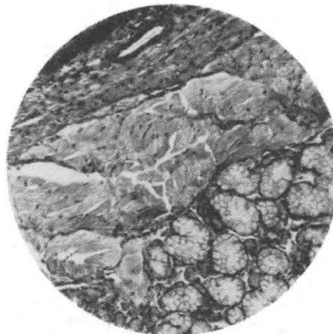


# ESTERLINE ANGUS

Can you recall these details . . .



when examining these?



Compare them simultaneously with AO's Duo-Star Microscope.



You view two specimens side by side with the split field of AO's unique Duo-Star Microscope. No guesswork. No back-and-forth specimen changes. No chance of memory playing tricks.

The rugged optical bridge connects two of AO's famous Microstar Laboratory Microscopes. A movable vertical line divides the two images. It is moved transversely so that either field can be viewed individually, or portions of both fields can be viewed simultaneously. You can match, compare and study specific areas of interest.

Either binocular or trinocular bodies can be accommodated. An optional viewing screen fits on the third tube of the trinocular body to facilitate teaching and group observation. Or this third tube will accept an optional camera for photomicrography.

Unless you possess total recall, investigate the Duo-Star Microscope. Just contact your AO Sales Representative or write for more facts.



**AMERICAN OPTICAL COMPANY**  
INSTRUMENT DIVISION • BUFFALO, NEW YORK 14215

