

lege of Science and Technology, University of London

**M. Szwarc**, research professor and director of polymer research, State University of New York College of Forestry, Syracuse

**D. H. Whiffen**, deputy chief scientific officer, Basic Physics Division, National Physics Laboratory, Teddington, Middlesex

**Frederick White**, chairman of the Commonwealth Scientific and Industrial Research Organization, Canberra, Australia.

## Recent Deaths

**Milislav Demerec**, 71; senior geneticist at Brookhaven National Laboratory, and one of the discoverers of mutable genes; 12 April.

**Rufus H. Fitzgerald**, 75; chancellor of the University of Pittsburgh from 1944 to 1955; 11 April.

**Jackson Walter Foster**, 51; professor of microbiology, University of Texas; 9 April.

**Elizabeth O. King**, research microbiologist in charge of the Diagnostic Bacteriology Laboratory, PHS Communicable Disease Center, Atlanta, Georgia; 8 April.

**Harry Houser Love**, 86; professor emeritus and former head of the department of plant breeding, Cornell University; 20 April.

**Harold Hanson Mitchell**, 80; professor emeritus of animal nutrition, University of Illinois; 28 March.

**R. M. Petrie**, 59; director of the Dominion Astrophysical Observatory, British Columbia, Canada; 8 April.

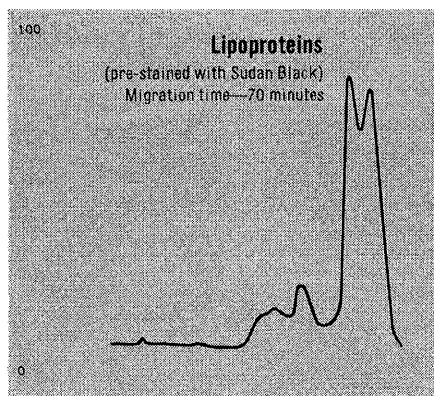
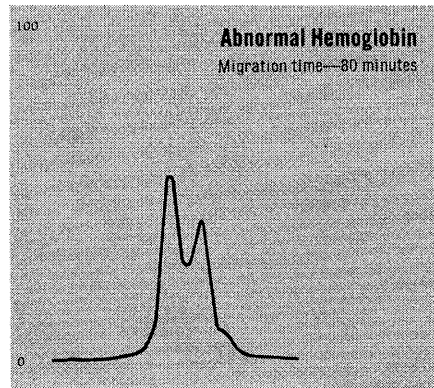
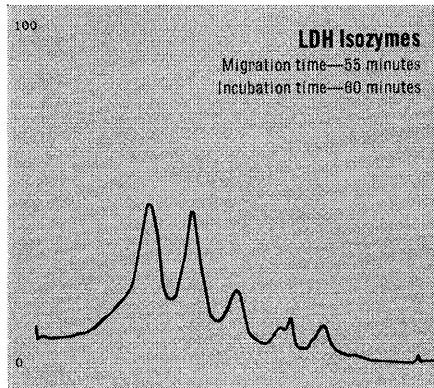
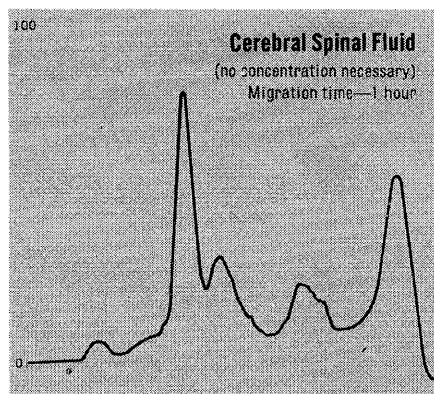
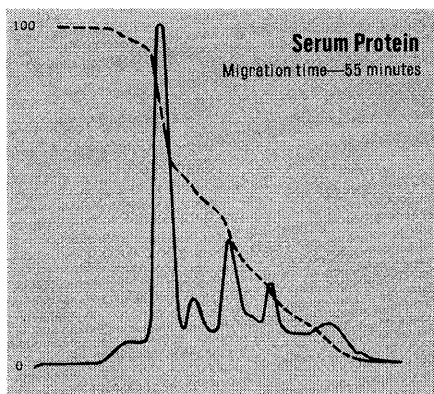
**Martin Silderberg**, 70; professor emeritus of pathology, Washington University; 12 April.

**John Teeter**, 66; former executive director of the Damon Runyon Memorial Fund for Cancer Research, and since last year executive vice president of Germfree Products, Inc., St. Petersburg, Florida; 12 April.

**Anna Pell Wheeler**, 82; professor emeritus of mathematics at Bryn Mawr College; 26 March.

**John H. Williams**, 57; professor of physics, University of Minnesota and president, Argonne Universities Association; 18 April.

**Erratum:** In the report "Oxygen isotope fractionation in the system dolomite-calcite-carbon dioxide" by J. R. O'Neil and S. Epstein (8 April, p. 198), the last part of the first sentence should have read "... the oxygen isotopic compositions of each mineral of a pair are essentially the same (over a 7 per mil range)."



## Only SPECTROPHOR I can do routine Serum Protein Electrophoresis *without staining, without counting pips*

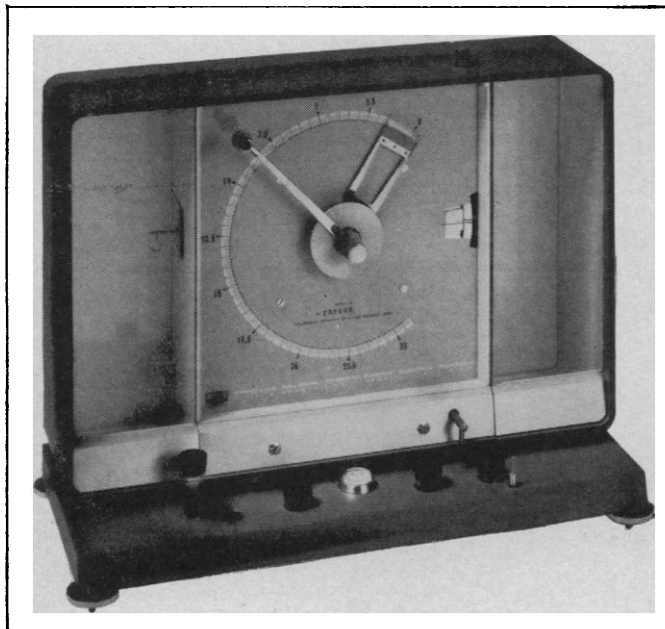
Qualitative and quantitative determinations of 8 samples of serum protein in 90 minutes or less . . . and operator time is never more than 30 minutes per run. You're assured more reliable results with far greater simplicity of procedure than you can get with any other system. Repeatability is within 2%. No staining. No difficult preparations. No pip counting or calculations necessary.

Some Spectrophor I procedures can indicate albumen loss in wasting diseases, gamma globulin increase in hepatic conditions, disappearance in agammaglobulinemia. Diagnoses multiple myeloma. Separates hemoglobin for Sickle Cell disease and Hemoglobin F. LDH determinations diagnose and follow the course of treatment of a wide variety of clinical disorders . . . myocardial infarction, liver disease, etc.

Write for Catalog 34-2138, Bausch & Lomb, 64229 Bausch Street, Rochester, N. Y. 14602.

**BAUSCH & LOMB**

## Roller Smith Precision Balances offer outstanding quality with unique versatility.



Roller Smith Precision Balances combine quality construction with great versatility. Each balance may be tared to increase its basic range by a factor of three with constant sensitivity and accuracy. All models are easily portable and require no special environment. And repetitive weighings can be performed with utmost speed by means of a convenient beam lock and release.

Each Roller Smith balance has a rugged, light weight, die cast aluminum case and a modern design that's functionally suited for ease of operation. Extremely fine sensitivity with precise accuracy is maintained for decades because of their durable construction.

The LH series, which is compensated for temperature and humidity changes has an accuracy of  $\frac{1}{10}$  of 1%. The LG series balances provide a wide variety of models calibrated in milligrams, grams and grains with an accuracy of  $\frac{1}{5}$  of 1%. All models are economically priced making the Roller Smith Balances ideal for use in education, research and quality control, or a second balance for all labs.

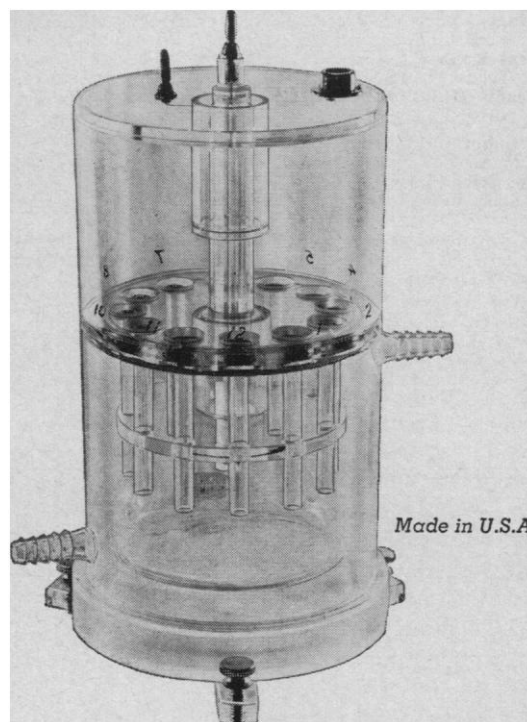
The most recent addition to the Roller Smith heritage, is the Rosano Surface Tensiometer. Employing the Wilhelmy principle, measurement of surface tensions and pressures may be obtained with greater accuracy and ease than is customarily realized with prior instrumentation.

| Model          | LG0500MG | LH0100MG | LG0025MG | Tensiometer  |
|----------------|----------|----------|----------|--------------|
| Basic Range    | 500mg.   | 100mg.   | 25mg.    | 98 dyne/cm   |
| Tared Capacity | 1.5gm.   | 300mg.   | 75mg.    | 294 dyne/cm  |
| One Scale Div. | 2.0mg.   | 0.5mg.   | 0.1mg.   | .392 dyne/cm |
| Sensitivity    | 0.2mg.   | .05mg.   | 0.01mg.  | .04 dyne/cm  |
| Accuracy       | 1 mg.    | 0.1mg.   | 0.05mg.  | .19 dyne/cm  |
| Price          | \$290.00 | \$468.00 | \$315.00 | \$460.00     |

These and other Roller Smith Precision Balances are available through your laboratory supply house. For more information, send for our 16 page, full line catalog. Write to Federal Pacific Electric Company, 50 Paris Street, Newark 1, New Jersey.

**FPE** Federal Pacific Electric Company

## TEMPERATURE REGULATED ANALYTICAL MODEL



### POLYACRYLAMIDE DISC ELECTROPHORESIS APPARATUS

- Compact and Convenient to Use
- 12 Sample Columns May Be Run at One Time — 0.005-0.200mgm Capacity Per Column
- Separation and Destaining All in One Unit
- Water-Jacketed Lower Buffer Chamber
- Easy Vertical and Horizontal Alignment of Columns
- Complete Electrophoretic Separation in 30-45 Minutes
- Ideal for Determining Operating Parameters for Poly Prep™

only . . . . . \$198.00

Find Out More: Request Buchler Bulletin # S-3-1750



LABORATORY APPARATUS • PRECISION INSTRUMENTS  
**BUCHLER INSTRUMENTS, INC.**  
1327 16TH STREET, FORT LEE, NEW JERSEY 07024

## INDEX TO ADVERTISERS—13 May 1966

|   |              |  |          |  |          |
|---|--------------|--|----------|--|----------|
| Academic Press                            | 833          | Fisher Scientific Co.                  | 993      | Phoenix Precision Instrument Co.         | 975      |
| Addison-Wesley Publishing Co., Inc.       | 824          | Flow Laboratories, Inc.                | 829      | Photovolt Corp.                          | 964      |
| Appleton-Century-Crofts, Div. of          |              | Galileo Corp. of America               | 975      | Polacoat, Inc.                           | 976      |
| Meredith Publishing Co.                   | 981          | Gilford Instrument Laboratories, Inc.  | 848      | Pope Scientific Inc.                     | 972      |
| Applied Physics Corp.                     | 825          | Hacker, William J., & Co., Inc.        | 985      | Press of Western Reserve University      | 968      |
| Baker, J. T., Chemical Co.                | 856          | Hallikainen Instruments                | 840      | Princeton University Press               | 985      |
| Basic Books, Inc.                         | 995          | Harvard Apparatus Co., Inc.            | 996      | Professional Tape Co., Inc.              | 972      |
| Bausch & Lomb                             | 905-910, 997 | Harvard University Press               | 847      | Radiochemical Centre                     | 959      |
| Beckman Instruments, Inc., Scientific and |              | Hewlett-Packard, Sanborn Div.          | 971      | Raytheon Co.                             | 1001     |
| Process Instrument Div.                   | 866          | High Voltage Engineering Corp.         | 818, 819 | Reeve Angel, Scientific Div.             | 855      |
| Bell Telephone Laboratories               | 844          | Houghton Mifflin Co.                   | 975      | Revco Inc.                               | 967      |
| Bendix Corp., Cincinnati Div.             | 860          | Hyland Laboratories                    | 961      | RGI Inc.                                 | 977      |
| Benjamin, W. A., Inc.                     | 857          | Instrumentation Associates, Inc.       | 977      | Sargent, E. H., & Co.                    | 837      |
| Blackstone Ultrasonics, Inc.              | 969          | Jarrell-Ash Co.                        | 850, 964 | Saunders, W. B., Co.                     | 841      |
| Blaisdell Publishing Co.                  | 851          | Klett Manufacturing Co., Inc.          | 967      | Savant Instruments, Inc.                 | 969      |
| Bowker, R. R., Co.                        | 960          | Lab Cages, Inc.                        | 859      | Schleicher, Carl, & Schuell Co.          | 968      |
| Brinkmann Instruments                     | 963          | Labindustries                          | 965      | Siemens America Inc.                     | 979      |
| Bronwill Scientific                       | 989          | Lauda, Div. of Brinkmann Instruments   | 852      | Sorvall, Ivan, Inc.                      | 830      |
| BRS Electronics                           | 980          | Lea & Febiger                          | 861      | Spectrolab, Div. of Textron Electronics, |          |
| Buchler Instruments, Inc.                 | 998          | Lourdes                                | 836      | Inc.                                     | 960      |
| California Computer Products, Inc.        | 858          | Mathatronics, Inc.                     | 991      | Springer-Verlag New York, Inc.           | 853      |
| Cambridge University Press                | 986          | Matheson Co., Inc.                     | 826, 854 | Taurus Press, Inc.                       | 978      |
| Carver, Fred S., Inc.                     | 987          | McGraw-Hill Book Company               | 839      | Technicon Chromatography Corp.           | 994      |
| Chemical Rubber Co.                       | 988          | Mettler Instrument Corp.               | 987      | Tenney Engineering, Inc.                 | 978      |
| Clifton Technical Physics                 | 962          | Mistaire Laboratories                  | 996      | Texas Instruments Inc., Apparatus Div.   | 838      |
| Consultants Bureau/Plenum Press           | 827          | Monroe International                   | 845      | Thermolyne Corp.                         | 990      |
| Coors Porcelain Co.                       | 970          | Mosby, C. V., Co.                      | 862, 863 | Thomas, Charles C., Publisher            | 835      |
| Dajac Laboratories                        | 996          | Nalge Co., Inc.                        | 982      | Tracerlab                                | 986      |
| Davis, F. A., Co.                         | 970          | National Instrument Laboratories, Inc. | 961      | Tri-R Instruments                        | 978      |
| Delmar Scientific Laboratories, Inc., a   |              | Nega File Co.                          | 968      | University of Chicago Press              | 868      |
| subsidiary of Coleman Investment          |              | Nester/Faust Instruments Products Div. | 973      | Varian Associates                        | 846, 864 |
| Corp.                                     | 962          | Nuclear-Chicago                        | 1002     | Wang Laboratories, Inc.                  | 976      |
| Digital Equipment Corp.                   | 867          | Nutritional Biochemicals Corp.         | 815      | Wiley, John, and Sons, Inc.              | 820-823  |
| Dimco-Gray Co.                            | 994          | Owens-Illinois                         | 814      | Wilkens-Anderson Co.                     | 974      |
| Disposable Laboratory Cages, Inc.         | 981          | Oxford University Press                | 973, 990 | Williams & Wilkins Co.                   | 992      |
| Doubleday & Co., Inc.                     | 849          | Packard Instrument Co.                 | 870      | Winthrop Laboratories                    | 994      |
| Edmund Scientific Co.                     | 963          | Percival Refrigeration & Mfg. Co.      | 994      | Wistar Institute Press                   | 976      |
| Electronic Associates, Inc.               | 834          | Pergamon Press                         | 959, 989 | Worthington Biochemical Corp.            | 978      |
| E & M Instrument Co., Inc.                | 987          | Pharmacia Fine Chemicals, Inc.         | 992      | Year Book Medical Publishers, Inc.       | 966      |
| Federal Pacific Electric Co.              | 998          | Philbrick Researches                   | 828      | Zeiss, Carl, Inc.                        | 842, 843 |
| Fish-Schurman Corp.                       | 967          |  |          |  |          |

## PERSONNEL PLACEMENT

### POSITIONS WANTED

**Biochemist, Ph.D.**, 1963. Age 30. Training in the biochemistry of phage-infected bacteria; virus-infected mammalian cells; nucleic acid enzymology and enzyme isolation. Desires research position. Box 106, SCIENCE. X

**Embryologist, Ph.D.**, with broad teaching background and research experience in vertebrate morphology, development and endocrinology, desires relocation. Publication. Box 107, SCIENCE. X

**Microbiologist-Mycologist**. Extensive experience with research and clinical microbiology. Desires academic appointment. Box 90, SCIENCE. X

(a) **Physiology Ph.D.**; zoology minor; cell biology specialty; cancer, heart research, teaching experience; seeks research or academic appointment. (b) **Botany Ph.D.**; agronomy, genetics minors; life science research, university teaching experience; prefers academic or administrative appointment. Write **WOODWARD MEDICAL PERSONNEL BUREAU**, 185 NORTH WABASH, CHICAGO 60601. X

### POSITIONS OPEN

#### MICROBIOLOGISTS

Hazleton Laboratories, a leading independent company specializing in the Life Sciences, needs B.S. Microbiologists or Bacteriologists with 0-3 years' experience. Duties include microbial assay, biochemical, radiological, and immunological research. Stable employment, chance for advancement, competitive salaries, excellent educational assistance policy, and profit-sharing plan. Please send resume or write for application. **Hall A. Acuff**, Assistant Personnel Manager, Hazleton Laboratories, Inc., P.O. Box 30, Falls Church, Virginia 22046.

An Equal Opportunity Employer

### POSITIONS OPEN

(a) **Ph.D. Microbiologist and Biochemist**, head new groups; applied research; Mideast; to \$18,000. (b) **Biology**, neurophysiology research; \$6000; Central. (c) **Biochemist**, enzyme research; to \$7200; Midwest. *Faculty Appointments*. (d) **Ph.D. Immunochemist**, research; Southeast university. (e) **Ph.D. Cytologist**, Southwest. (f) **General Zoology**; rank open; Northeast university. (g) **Ph.D. Anatomy Physiology**, teaching emphasized; Mideast. Write **SCIENCE SERVICE, The Medical Bureau**, 900 N. Michigan Avenue, Chicago, Illinois 60611. X

#### Ph.D. (Biochemistry, Pharmacology, or Toxicology)

Apply for unusual opportunity to Personnel Administrator, Connecticut State Department of Health, Hartford, Conn. Submit resume and salary requirements.

An Equal Opportunity Employer

### POSITIONS OPEN

#### Predocctoral Assistantships and Traineeships in Physiology

Excellent opportunities for graduate students leading to the Ph.D. Ample stipends and free tuition. Training and research in endocrinology, gastrointestinal, water and electrolyte metabolism, cardiovascular, sensory physiology, biophysics and bioengineering. Write for details to: **Head, Department of Physiology**, University of Illinois at the Medical Center, P. O. Box 6998, Chicago, Illinois 60680

**Microbiologist and Biochemist**; Ph.D. degrees, applied research experience, administrative ability required. Will head sections of new agriculture and animal nutrition research divisions of major chemical company; will establish, staff, supervise, develop own section. Start \$12,000 to \$18,000 year with exceptional growth potential. Modern facilities, desirable mid-Atlantic location. Placement fee paid. Send application to **WOODWARD MEDICAL PERSONNEL BUREAU**, 185 NORTH WABASH AVENUE, CHICAGO, ILLINOIS 60601. X

## Research Parasitologist

Ph.D. with major training and interest in helminthology to conduct research and assume responsibility for evaluation of new anti-parasitic agents for veterinary applications. Will consider M.S. degree with sufficient experience.

Position offers independence and good future in expanding research program. Salary commensurate with ability and experience.

Send resume in confidence to Personnel Department

### HESS & CLARK

Division of Richardson-Merrell Inc.  
Ashland, Ohio  
An Equal Opportunity Employer

## POSITIONS OPEN

Applications are invited for the position of Executive Director of the Boreal Institute, University of Alberta, Edmonton. The function of the Institute is to foster research in northern areas on an inter-disciplinary basis. Duties of the Executive Director will include formulation of Institute policy in consultation with the Board of Directors, promotion of its activities within and outside the University, and coordination of various research projects.

Applicants should preferably have a record of experience in the Arctic or sub-Arctic and proven administrative ability.

Salary and rank will be commensurate with the appointee's qualifications, and may be made at the rank of Professor with a minimum salary of \$15,100 per annum. Applications, together with references and supporting documents, including educational, professional and personal dossiers, should be submitted without delay to: Dr. C. S. Grant, Chairman, Board of Directors, Boreal Institute, c/o Department of Anthropology, University of Alberta, Edmonton, Alberta, Canada.

**"X-Ray Diffraction Technician—B.S.** Past experience with x-ray camera work essential (single crystal and powder patterns). Starting salary \$6300; rising to \$6675 after one year. Research connected with photographic and counter recording of diffraction patterns obtained from biological materials. Equal Opportunity Employer. Contact Russell P. Ketcham, Personnel Director, Roswell Park Memorial Institute, Buffalo, New York 14203."

## The Marketing Manager we're looking for already has a successful career going.

The only reason he'd move is  
for something definitely bigger.

We're looking for an extraordinary man. A man who has a particular ability for incisive action. A man with at least five years' experience in the medical or drug products field. An imaginative, creative, strongly dependable man who will be responsible for the development of various new product lines. His contribution to corporate growth will be critical and a never-diminishing challenge to his skill and marketing knowledge.

This singular man will be associated with a rapidly expanding biological firm, five years old and soaring. Conservative projections by a solid management team call for a doubling of sales each year for the next three. The company already has a well-respected and diverse product line serving the medical diagnostic and research markets. Technical research and production facility backup are extremely competent and extensive. The ingredients for an illustrious career are here. Your resume will receive a thorough and confidential review by the president. Box 108, SCIENCE.

## The Market Place

BOOKS • SERVICES • SUPPLIES • EQUIPMENT

### BOOKS AND MAGAZINES

## AUTHORS WANTED BY NEW YORK PUBLISHER

Your book can be published, promoted, distributed by a reliable company on a subsidized basis. Fiction, non-fiction, poetry, scholarly, scientific and even controversial manuscripts welcomed. For Free Booklet write Vantage Press, Dept. SC, 120 W. 31 St., New York 10001.

## WRITERS

N. Y. publisher wants books on all subjects, fiction, nonfiction. No fee for professional opinion. FREE: Brochures that show how your book can be published, publicized, sold; tips and article reprints on writing, publishing, contracts. Write Dept. 75E  
**EXPOSITION** 386 Park Ave. So., N.Y. 16

1000

## PROFESSIONAL SERVICES

### HISTOLOGY SERVICE

**RAPID SERVICE Large Orders Quickly Processed! Quickly Shipped!** Professional supervision of every order. Free estimates on special problems. Distant points serviced swiftly. Special stains and techniques available. Fully protected shipments. HISTOLOGY SERVICE, INC. 4801 N. Broad St., Philadelphia, Pa. Zipcode 19141, (215) DAVenport 4-5800

### TRACE ELEMENT PROBLEMS?

Contact: Activation Analysis Service, Dept. AA-24 General Atomic Division, General Dynamics, P.O. Box 608, San Diego, California 92112. Or, phone: Area Code 714, 453-1000, Ext. 618.

Visit Booth 16, Chicago SAS Meeting

## SUPPLIES AND EQUIPMENT

### CONTRACT STERILIZATION AVAILABLE.

Wilmot Castle Company offers a wide variety of methods and equipment for sterilizing and certified sterility testing on production line basis. Many years experience with a wide range of products. Our R&D facilities are staffed with skilled researchers specializing in sterilization and ready to undertake solution of your sterilization problems. Call, write or wire, Research Lab, Wilmot Castle Company, Rochester, New York.

1919 - 1966  
**LaMotte Chemical**  
Chestertown, Maryland, U.S.A.  
Specialists in

Colorimetric Techniques  
Reagents-Standards-Comparators  
Send for illustrated Controls Handbook  
Dept. H

**SPRAGUE-DAWLEY, INC.**  
Pioneers in the development of the  
**STANDARD LABORATORY RAT.**

P.O. Box 4220  
Madison, Wisconsin  
CE 3-5318



Completely new, "hands-free" Magnifier has exclusive "flip-up" interchangeable lens plate that adjusts instantly to magnified or regular vision • Simply snap on extra lens plates for higher or lower magnification. No screws or bolts • Precision-ground optical glass lenses. Lightweight, adjustable, may be worn with eyeglasses. Black or White. Only \$12.50 pr.

Write for  
Magnification  
Chart, Price  
List S-566

**magni-focuser**  
DIVISION

**EDROY PRODUCTS CO., INC.**

130 West 29th St., New York 1, (212) LO 5-5226

Circle 126 on Readers' Service Card

## TRAINING

For Careers in

HEALTH

SCIENCE

ADMINISTRATION

Through the PHS Grants  
Associates Program

Scientists interested in the administrative challenge implicit in Federal programs supporting training, research, and services in health related fields are urged to consider opportunities in the Grants Associates Program of the Public Health Service.

The program provides a unique educational experience designed to prepare each associate for a career in health science administration. For a 12 month period the grants associate participates in an individually structured program. He has the opportunity of working with senior scientist administrators, attending seminars, visiting project sites, attending scientific meetings and taking part in evaluation and analysis of grant supported programs.

The nature of the biomedical and health services programs in the Public Health Service affords many opportunities for exceptionally well qualified Scientist Administrators.

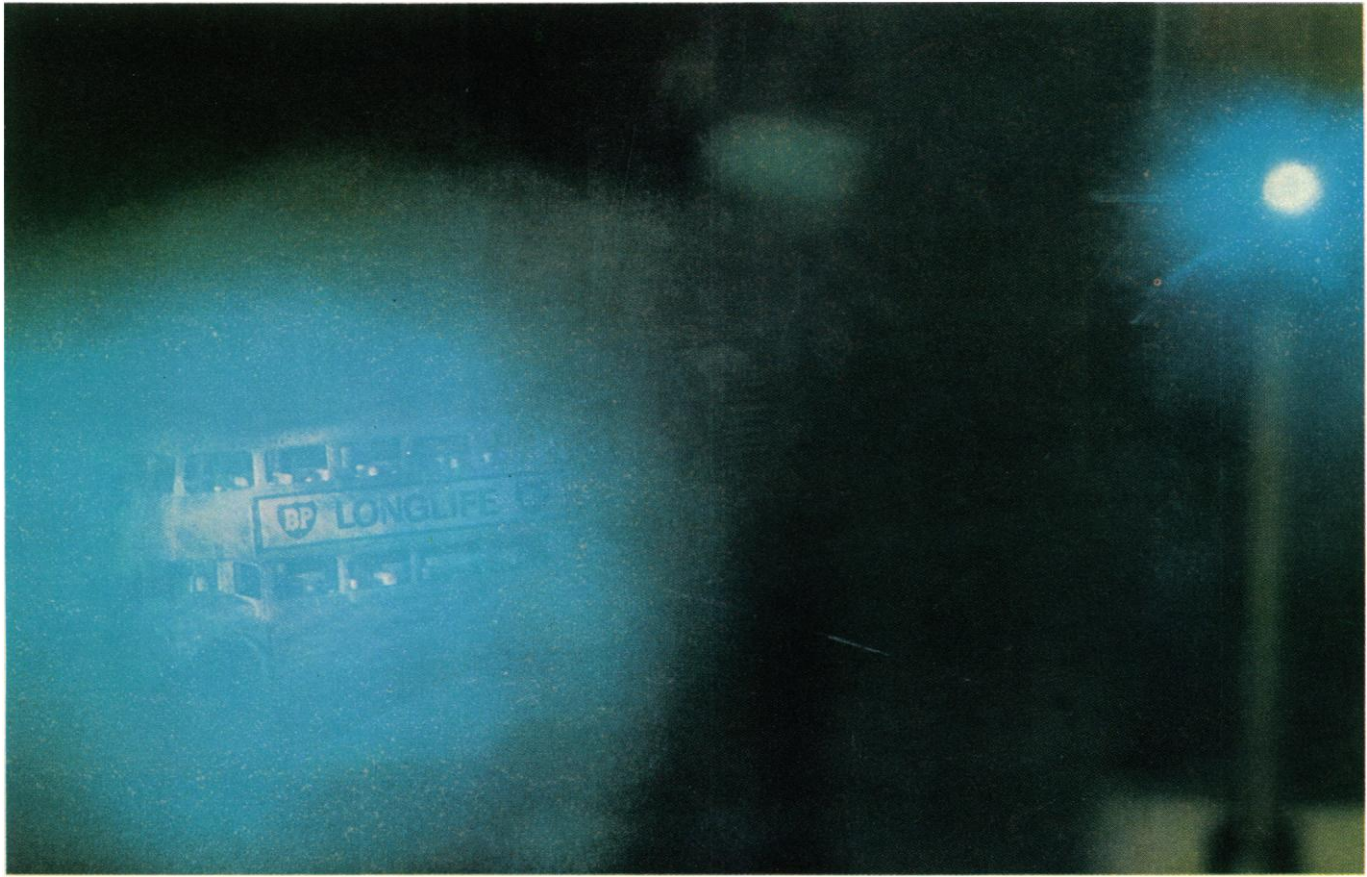
If you hold a doctorate in a discipline related to the biomedical sciences, including the behavioral sciences, have some post doctoral research experience, and are motivated toward the administration of federally supported programs in the biomedical and behavioral sciences, you should investigate the opportunities offered by the Grants Associates Program. The beginning salaries for these Civil Service appointments range from \$8,900 to \$14,500. For further information write: The Executive Secretary, Grants Associates Program.

## NATIONAL INSTITUTES OF HEALTH

Westwood Building, Room 139A  
Bethesda, Maryland 20014

An equal opportunity employer, M & F





## Raytheon argon ion laser generates blue and green hologram images

Raytheon's LG12 argon ion laser can produce 3-dimensional images in different colors complete with the parallax characteristic of holograms. The hologram image of the toy bus shown above can be generated in green or blue in any of six wavelengths.

The LG12 produces simultaneously a minimum of six wavelengths in the blue-green region of the spectrum. A single laser line may be selected by the use of a prism.

Total output of the LG12 is 1 Watt CW; its beam is diffraction limited; and the wave front is a uniphase spherical TEM<sub>00</sub> mode. Raytheon warrants the LG12's gas discharge tube for 4000 amp hours input, the equivalent of over 250 hours of 1-Watt operation.

The LG12 laser is available for delivery within 60 days. A laser with similar configuration to the LG12 but operating in the deep red portion of the spectrum will be available in the near future.

Raytheon offers a complete selection of standard and special gas and solid state lasers and compo-

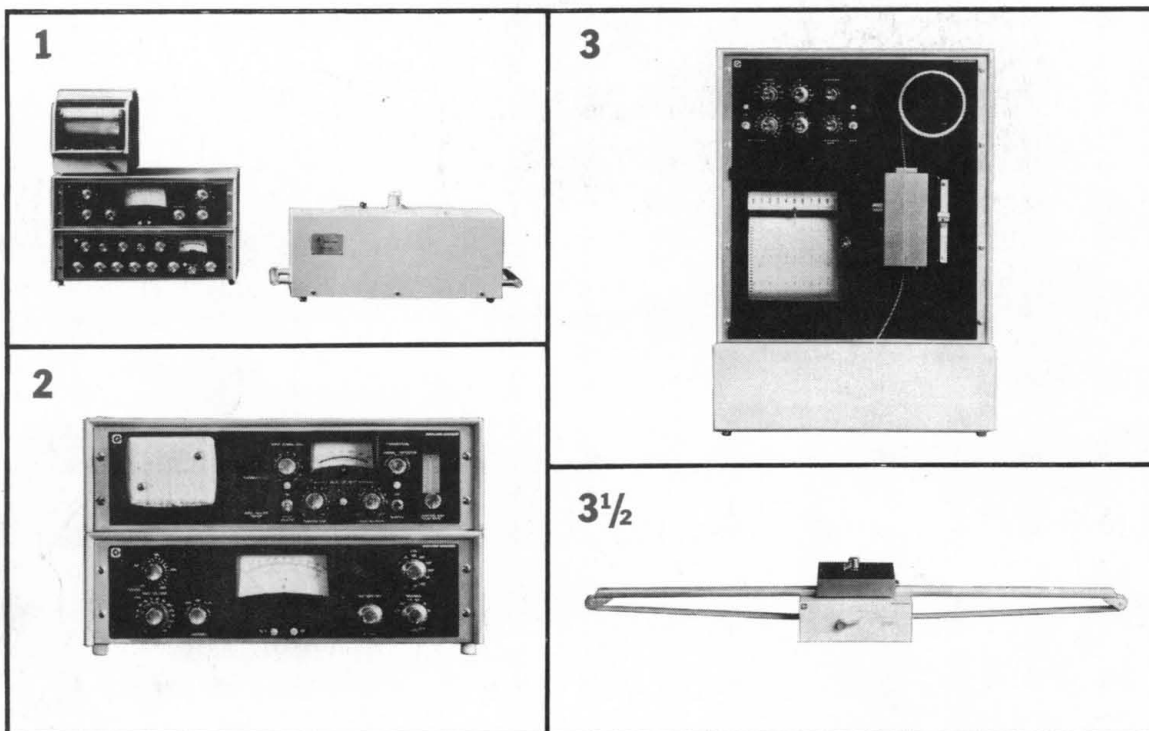


Tested and proved in the field, the Raytheon LG12 has applications in Raman spectroscopy, interferometry, optical data recording, and light scattering as well as holography.

nents. For details, write or call *Raytheon Company, Special Microwave Devices Operation, Laser Advanced Development Center, 130 Second Ave., Waltham, Mass. 02154. Or telephone: (617) 899-8080.*

**RAYTHEON**

# For radiochromatography, 3 systems aren't enough and 4 are too many.



## So we make 3<sup>1/2</sup> different systems.

But don't think we really do things by halves. Here's how each of these systems lets you take full advantage of a different radiochromatography application:

**1.** For analysis of the radioactive effluent from a liquid-partition column, such as an amino acid analyzer, there's our Model 4526. It gives you automatic, continuous detection and recording without time-consuming collection, preparation, and analysis of effluent fractions.

**2.** Direct detection and measurement of radioactive components in the gaseous effluent of a gas chromatograph—the work of our Model 4998 with its internal proportional detector. No more fraction collection and analysis or sample combustion. Just speed, efficiency, accuracy, and reliability.

**3.** Paper-strip radiochromatography becomes a simple, accurate technique when you use our Model 1002 Actigraph® III. Easy, foolproof

paper-strip loading, vertical paper travel (to minimize contamination), 4-pi detection geometry, and unusually low detecting gas consumption.

**3<sup>1/2</sup>.** An automatic thin-layer plate radiochromatography system: the Model 1006 Conveyor and one chamber of the Actigraph III's dual detector. It does away with scraping silica gel from a glass plate into a liquid scintillation bottle or making a radioautograph of the plate.

Get the whole story on systems 1 through 3<sup>1/2</sup>. Also find out about our digital integrator for continuous print-out of quantitative radiochromatography measurements. Consult your Nuclear-Chicago sales engineer or write to us.

NUC-B-6-232



**NUCLEAR-CHICAGO  
CORPORATION**