

4-8. **International Biological Program**, 2nd general assembly, Paris, France. (F. W. G. Baker, 2 via Sebenico, Rome, Italy)

4-10. **Psychology**, 10th inter-American congr., Lima, Peru. (Intern. Soc. of Psychology, 2104 Meadowbrook Dr., Austin, Tex.)

5-7. **Middle East Neurosurgical Soc.**, mtg., Jerusalem, Jordan. (F. S. Haddad, Orient Hospital, Beirut, Lebanon)

5-8. **American Assoc. of Anatomists**, San Francisco, Calif. (R. T. Woodburne, Dept. of Anatomy, Univ. of Michigan, Ann Arbor 48104)

6-7. **Phlebology**, 6th intern. mtg., Aix-en-Provence, France. (F. Beurier, 94, cours Sextius, Aix-en-Provence)

6-8. **Electron and Laser Beam Technology**, Univ. of Michigan, Ann Arbor. (G. I. Haddad, Electrical Engineering Dept., Univ. of Michigan, Ann Arbor)

6-8. **Recent Advances in Phytochemistry**, intern. symp., Univ. of Texas, Austin. (T. J. Mabry, Dept. of Botany, Univ. of Texas, Austin 78712)

6-8. **Plant Phenolic** Group of North America, 6th annual mtg., Austin, Tex. (V. C. Runeckles, Imperial Tobacco Co., Montreal, P.Q., Canada)

7-8. **Southern Sociological Soc.**, annual mtg., New Orleans, La. (J. J. Honigmann, Dept. of Anthropology, Univ. of North Carolina, Chapel Hill)

7-9. **Southern Soc. for Philosophy and Psychology**, New Orleans, La. (G. R. Hawkes, U.S. Army Medical R&D Command, Washington, D.C. 20315)

8-9. **American Soc. for Artificial Internal Organs**, Atlantic City, N.J. (B. K. Kusserow, Dept. of Pathology, Univ. of Vermont College of Medicine, Burlington)

8-11. **Animal Toxins**, intern. symp., Atlantic City, N.J. (F. E. Russell, Box 323, Los Angeles County General Hospital, 1200 N. State St., Los Angeles, Calif. 90033)

11-13. **Institute of Electrical and Electronics Engineers**, Region 3, conv., Atlanta, Ga. (M. D. Price, Dept. 72-14, Zone 400, Lockheed-Georgia Co., Marietta, Ga.)

11-13. **Comparative Hemoglobin Structure**, intern. symp., Salonika, Greece. (Secretary, P.O. Box 201, Salonika)

11-15. **Aeronomic Studies of Lower Ionosphere**, conf., Ottawa, Ont., Canada. (W. Pfister, Air Force Cambridge Research Laboratories, Upper Atmosphere Physics Laboratory, L. G. Hanscom Field, Bedford, Mass.)

11-15. **American Assoc. of Cereal Chemists**, New York, N.Y. (R. J. Tarleton, The Association, 1955 University Ave., St. Paul, Minn. 55104)

11-16. **Federation of American Societies for Experimental Biology**, 50th annual mtg., Atlantic City, N.J. The following societies will meet in conjunction with the FASEB; information may be obtained from FASEB, 9650 Rockville Pike, Bethesda, Maryland 20014:

American Physiological Society
American Soc. of Biological Chemists
American Soc. for Pharmacology and Experimental Therapeutics

American Soc. for Experimental Pathology

American Inst. of Nutrition

American Assoc. of Immunologists

25 FEBRUARY 1966

Old Reliable

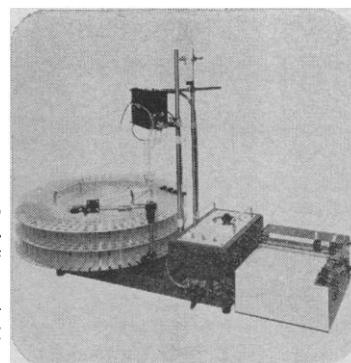


The newest, most versatile version of this famous fraction collector, currently serving scientists in more than a thousand laboratories all over the world, is now available for immediate delivery **direct** to you from Canalco's plant in Rockville, Maryland.

With the Canalco 1205 Fraction Collector, you can have accurate volumetric siphoning (2, 5, 10 or 20 ml fractions), timed flow (18 seconds to 2 hours) and drop counting (1 to 400 drops). Interchangeable turntables hold either 150 or 240 test tubes to collect fractions up to either 5 or 20 ml.

Canalco's own factory-trained technical representatives stand ready to assist in installation and guide you in operation at no extra cost. Canalco thus gives you double assurance of the same dependable, trouble-free performance on which this collector has built its unsurpassed reputation for quality and reliability. A two-year warranty provides added protection.

For sample collection plus flow analysis, the Canalco 1205 makes an integrated system with Canalco's Wide-Track 85 Ultraviolet Flow Monitor. Available in three models—all with true ratio recorders whose charts are as wide as this full three-column page—the Wide-Tracks give **more sensitive detection** of both proteins and nucleotides, and **cost less**, than any other flow analyzers. Options include **automatic scale expansion**, **automatic baseline compensation**, extension cables for cold-room use and choice of cuvette pathlengths. When ordered together, the Canalco 1205 and Wide-Track come with interconnecting cable for the Wide-Track's event marker pen.



Contact Canalco direct for full details on the Canalco 1205 Fraction Collector and Wide-Track Flow Monitor. Write or telephone:

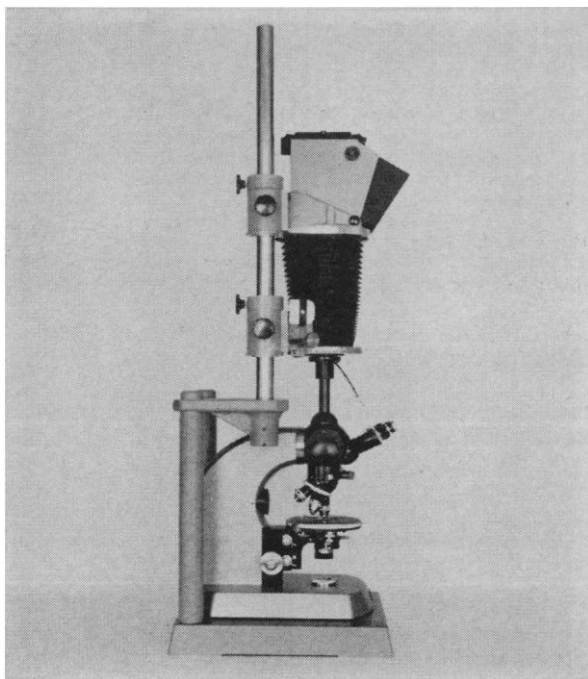


CANAL INDUSTRIAL CORPORATION

5635 Fisher Lane, Dept. S-22
Rockville, Maryland 20852 / (301) 427-1515

Sales and Service Offices in • Boston • Houston • New York • Seattle • Chicago • Los Angeles • Pittsburgh • Washington, D.C. Cincinnati • Memphis • Cleveland • Minneapolis • San Francisco

photo- micrography?



The Brinkmann Mark-V Camera can be used with all laboratory and research microscopes. Accessories include a 4x5" Graflok Back for cut film, Polaroid, No. 120 roll film and 35 mm. adaptors. A built-in exposure meter and low-power stage are optional.

**BRINKMANN
INSTRUMENTS**
CANTIAGUE ROAD, WESTBURY, N. Y. 11590/ED 4-7500

NEW

Labeled Chemicals

Glycerol-2-C ¹⁴	Specific Activity 11mc/mM
Hexachlorophene- methylene-C ¹⁴	1.1mc/mM
Iodoacetamide-1-C ¹⁴	2.5mc/mM

Write for Data



HAncock 6-7311

NEW ENGLAND NUCLEAR CORP.
575 ALBANY STREET, BOSTON 18, MASSACHUSETTS

SCIENCE BOOKS: A Quarterly Review

Published by AAAS since April 1965

An authoritative review and evaluation of new science and mathematics books

- * for elementary school students
- * for secondary school students
- * for students in the first two years of college
- * for teachers
- * for adult readers

The reviews are based on critical evaluations by professional scientists, mathematicians, educators, engineers, members of the medical profession, children's literature specialists, and others. Each book is assigned for review to a specialist most competent to appraise it.

Each quarterly issue of approximately 64 pages contains critical annotations and recommendations on 200 or more science and mathematics books.

Send your order to:

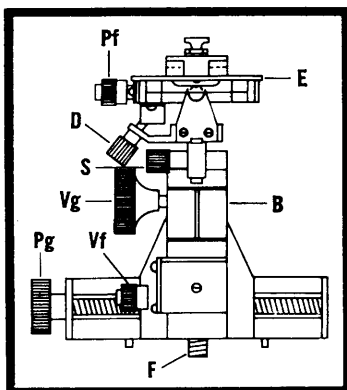
AAAS, 1515 Mass. Ave., NW, Wash., D.C. 20005

Please enter my subscription to **SCIENCE BOOKS**.
My check for \$4.50 for 1 year is enclosed.

Name: _____

Address: _____

City, State, Zip: _____



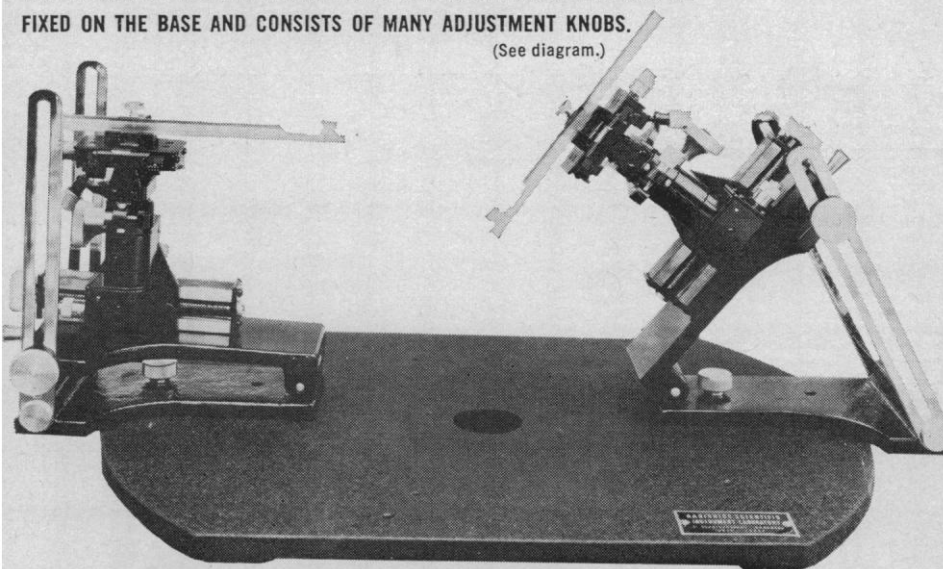
Pf: Horizontal fine adjustment.
D: Inclining adjustment.
S: Circular adjustment.
Vg: Vertical adjustment.
Vf: Vertical fine adjustment.
Pg: Horizontal adjustment.
B: 180° Rotation manually.
F: Set Screw (6mm)
 250 μ advancing per 360° rotation.

All movements are free from backlash and vibration. The micromanipulator can conveniently be used for any motion by using vertical, horizontal, inclining and circular arc adjustments. The unit is supplied in a wooden case.

MP-1 MICROMANIPULATOR PETERFI-TYPE

PETERFI-TYPE MICROMANIPULATOR SET CONSISTS OF TWO MANIPULATOR UNITS, TWO TILTING STANDS AND A BASE PLATE. THE MANIPULATOR UNIT CAN BE FIXED ON THE BASE AND CONSISTS OF MANY ADJUSTMENT KNOBS.

(See diagram.)



eric sobotka company, inc.
 IMPORTERS AND DISTRIBUTORS OF MICROSCOPES AND SCIENTIFIC INSTRUMENTS
 110 WEST 40TH STREET, NEW YORK, NEW YORK 10018, • AREA CODE 212 WISCONSIN 7-9216

PERSONNEL PLACEMENT

CLASSIFIED: Positions Wanted. 25c per word, minimum charge \$4. Use of Box Number counts as 10 additional words. Payment in advance is required. Send copy for position wanted ads to:

SCIENCE
 1515 Massachusetts Ave., NW
 Washington, D.C. 20005

COPY for ads must reach **SCIENCE** 2 weeks before issue date (Friday of every week).

DISPLAY: Positions Open. Rates listed below—no charge for Box Number. Rates net. No agency commission allowed for ads under 4 inches. No cash discount. Minimum ad: 1 inch. Ads over 1 inch will be billed to the nearest quarter inch. Frequency rate will apply only to repeat of same ad. No copy changes. Payment in advance is required except where satisfactory credit has been established. Send copy for display advertising to:

SCIENCE
 Room 1740
 11 West 42 St.
 New York 36

Single insertion \$75.00 per inch
 4 times in 1 year 70.00 per inch

For **PROOFS** on display ads, copy must reach **SCIENCE** 4 weeks before date of issue (Friday of every week).

Replies to blind ads should be addressed as follows:

Box (give number)
SCIENCE
 1515 Massachusetts Ave., NW
 Washington, D.C. 20005

POSITIONS WANTED

Veterinarian. 1962 University of Pennsylvania graduate. Associated with successful bovine practitioner. Several publications, some research experience. Desires large animal clinical and research position in institution or industry. Box 24, **SCIENCE**. 2/25, 3/4, 11, 18

POSITIONS WANTED

(a) **Biochemist M.S.:** electronic engineering background; pilot license; Ph.D. courses; seeks research position. (b) **Pathology Ph.D.:** radiation biology experience; prefers research appointment. Write Woodward Medical Personnel Bureau, 185 North Wabash, Chicago 60601. X

Biochemist, Ph.D. 1964. Doctoral and postdoctoral training in protein chemistry. Teaching experience, publications. Desires teaching and/or research. Available 1 July 1966. Box 30, **SCIENCE**. X

Biochemist, Ph.D., 1960. Twelve years of research in animal biochemical genetics, metabolic diseases, birth abnormalities. More than 20 publications. Desires responsible research or research/teaching position. Box 36, **SCIENCE**. X

Biologist-Administrator, Ph.D., desires chairmanship or higher administrative position by summer or fall 1966, deanship experience, prefer Southeast or Southwest. Box 26, **SCIENCE**. X

Cell Biologist, Ph.D. Seeks research, teaching position. Research: nucleic acid, protein synthesis. Publications. Box 18, **SCIENCE**. 2/25

Doctoral Candidate desires teaching summer school zoology/entomology. Six years of graduate and undergraduate teaching experience. Would also consider permanent position. Box 31, **SCIENCE**. X

D.V.M., 31, pharmacology M.S. Expects Ph.D. in August 1966. Experienced in clinical surgery and medicine, infectious disease and pharmacology research, and laboratory animal medicine (including primates). Has taught pharmacology, poisonous plants. Publications. Interested in all biological sciences. Desires position with university, corporation, or independent research organization. Will consider any location in or out of country. Box 32, **SCIENCE**. X

Medical Engineer, M.S.E.E. June 1966. Two years of research experience cardiovascular field. Some work toward Ph.D. Box 33, **SCIENCE**. X

POSITIONS WANTED

Microscopist-Petrographer M.Sc. 8 years' experience trans. and reflected, fluorescent light, hot stage. D.T.A.T.G.A., M.S.A., some x-ray. Box 25, **SCIENCE**. 2/25

Molecular Biologist, Ph.D., 1957. Academic experience. Presently teaching and directing sponsored research group, ion-transport chemistry, biophysical instrumentation. Seeks academic appointment stressing research program. Box 34, **SCIENCE**. X

Pathologist, board certified, experienced interpretation animal tissues, seeks part-time consulting work, hospital or industry. Box 5, **SCIENCE**. 2/25

Pharmacologist-Physiologist, Ph.D., experienced medical school trained researcher, educator. Extensive pharmaceutical background. Seeks responsible position in research/teaching, industry, or government. Box 16, **SCIENCE**. 2/25, 3/4

Physical Chemist-Biophysicist, Ph.D. 1956. Research interests are mechanisms of phototransduction, vision, electrophysiology. Currently associate professor teaching biophysics. Desires academic position. Box 35, **SCIENCE**. X

(a) **Ph.D. Anatomist,** teaching (gross, microscopic, neuroanatomy) and research experience; publications; desires combination teaching, research. (b) **Ph.D. Zoologist** (physiology minor): protozoology, cell biology experience; prefers teaching-research or administrative. (c) **Ph.D. Bacteriologist:** teaching, research experience and preference in hospital-affiliated college. Please write to **SCIENCE SERVICE, The Medical Bureau, Inc.,** 900 North Michigan Avenue, Chicago, Illinois, 60611. X

Research Biologist, M.S. Laboratory, literature; temporary, permanent; foreign, domestic; academic, industrial. Anything interesting, exciting, enticing, or profitable. Box 21, **SCIENCE**. 2/25

POSITIONS OPEN

BIOMEDICAL SCIENTIFIC PROGRAMMERS

Prominent Midwest pharmaceutical company has exceptional opportunities available in its Research Computer Center (IBM 360-tape, disk, A/D, CRT and TP). Several positions are now available involving challenging systems analysis and programming in the areas of pharmacology, clinical trials and scientific information systems. Qualified candidates will have a B.S. degree and EDP experience or advanced degree.

Please send complete résumé to:

Technical Employment
THE UPJOHN COMPANY
301 Henrietta Street
Kalamazoo, Michigan
An Equal Opportunity Employer

(a) **Chairman Biology Dept.** new science bldg LA college; S; open. (b) **Chemistry Prof** expanding college; E; \$11,000. (c) **Microbiology Assoc Prof** Univ. Med. Sch; Midw; \$14,000. (d) **Clinical Mgr** top scientific and administrative ability; large expanding hosp; Midw; \$15-22,000. (e) **Biochemist** develop dept new 250-bed hosp; research/teach affiliation; SE; \$15,000. (f) **Microbiologist** infectious disease research and supervising; large drug firm; E; \$15,000. For details write **WOODWARD MED. PERS. BUREAU**, 185 N. Wabash, Chicago 60601.

Professional Placement Services for 70 years

UNIVERSITY OF ESSEX CHAIR OF COMPUTING SCIENCE

Applications are invited for appointment to a Chair of Computing Science established in the University from October, 1966, in the School of Mathematical Studies. Applications (six copies) should be sent to the Registrar, University of Essex, Wivenhoe Park, Colchester, Essex, from whom further particulars may be obtained, as soon as possible and not later than 1st March 1966.

Desire recent Ph.D., mammalian physiology, preferably biochemistry minor, to join multidisciplinary university group engaged in biochemical toxicology research. Pacific Northwest. Reply to **Box 15, SCIENCE**.

1) **Foods**. 2) **Textiles**. 3) **Human Nutrition**. Applicants (male or female) should possess at least Master's degree. Candidates with Ph.D. expected to conduct research and do limited amount of teaching; candidates less highly qualified would carry heavier teaching loads, less research. Excellent facilities and salaries. Large urban university; large graduate school. Please send pertinent information to: **Dr. Elizabeth L. Empey, Director, School of Household Economics, University of Alberta, Edmonton, Alberta, Canada.**

(a) **Laboratory Supervisor**, M.S./Ph.D.; 300-bed New England hospital; to \$15,000. (b) **Marine Biologist**, research, field work; to \$9500. (c) **Microbiologist**, applications and development; eastern firm; to \$11,000. *Faculty Appointment*. (d) **Ph.D. Physiologist**, Central medical college; to \$13,000. (e) **Ph.D. Biology**, microbiology/genetics; Southeast college. (f) **Biology**, cell, invertebrate zoology; Central college. (g) **Biology**, anatomy, embryology; southwestern university; \$9000. Many others available. Write **SCIENCE SERVICE, The Medical Bureau, 900 North Michigan Avenue, Chicago, Illinois 60611.** X

MICROBIOLOGIST, PH.D.

Assistant or Associate Professor to conduct graduate research program and teach introductory course in industrial microbiology. Apply: Chairman, Dept. of Microbiology, Northwestern State College, Natchitoches, Louisiana 71457.

PHOTOGRAPHER/SCIENTIST to work in field of Molecular Biology with renowned Electron Microscopist. B.S. in Biological or Physical Sciences, some experience in electronic equipment/photography desirable. Top salary, benefits; outstanding opportunity. **N.Y.U. Medical Center.** Apply Personnel: 568 First Ave. New York City.
An equal opportunity employer

POSITIONS OPEN

MICROBIOLOGISTS

Professor of Microbiology—\$18,000
Associate Professor of Microbiology—\$14,000

AVAILABLE IMMEDIATELY

Address applications to J. M. Severens
Dept. of Microbiology, School of Medicine,
Creighton University, Omaha, Nebraska 68102

PREDOCTORAL ASSISTANTSHIPS available in the Department of Nutrition and Food Science at the Massachusetts Institute of Technology for 1966-1967 for qualified candidates wishing to pursue a training and research program in either Nutrition, Food Science & Technology, Physiological Chemistry, Food Toxicology, Food Engineering, and Biochemical Engineering.

For application form and information write: Professor Nevin S. Scrimshaw, Head of Department of Nutrition and Food Science, Massachusetts Institute of Technology, Cambridge, Massachusetts, 02139.

TRAINEESHIPS FOR GRADUATE WORK IN PHARMACOLOGY

A 4-year program of course work and research training leading to the Ph.D. degree is offered. Research in fundamental mechanisms of drug action. Starting annual stipend \$2400 plus tuition and \$500 per dependent. Early application for September 1966 strongly advised. Write:

Department of Pharmacology
School of Medicine
State University of New York at Buffalo
122 Capen Hall, Buffalo, New York 14214

Research Associate Microbiologist

Ph.D. or M.D. Full time research in microbial or human biochemical genetics. Salary: \$13,000 and up, depending on qualifications.

POST DOCTORATE FELLOWSHIPS IN MENTAL RETARDATION

Ph.D. or M.D. One or two year Fellowships offering training in laboratory and/or clinical aspects of detection, diagnosis and study of mental retardation. Laboratory emphasis is on biochemical genetics. U.S. citizenship or application for citizenship required. Stipend: In range of \$6,000-\$8,000.

Robert Guthrie, Ph.D., M.D.
Department of Pediatrics
State University of New York at Buffalo
Children's Hospital
219 Bryant Street
Buffalo, New York 14222

POSITIONS OPEN

Immunologist-Immunohematologist: Position in research and service laboratory available. Faculty appointments, fringe benefits, opportunities to follow own areas of investigation. Open salary. **Box 37, SCIENCE.**

POSTDOCTORAL

Proteins, nucleic acids; organic, biochemical, physico-chemical approaches to structure and function. Write **Dr. J. Bello, Dept. of Biophysics, Roswell Park Memorial Institute, Buffalo, New York**

POSTDOCTORAL TRAINEESHIPS IN METABOLISM AND NUTRITION. Postdoctoral Traineeships in the field of Metabolism are available in the Department of Biochemistry, St. Louis University School of Medicine. The program is primarily for physicians who have had a minimum of an internship and who are interested in learning the application of biochemistry to clinical investigation. Facilities for human studies available in Department of Medicine. The stipends begin at \$5500 per annum with \$500 for dependents and appointments may be made for a period of one to three years beginning July 1, 1966. Ph.D. degree possible. Please apply to: **Dr. R. E. Olson, Professor and Chairman, Department of Biochemistry, St. Louis University School of Medicine, St. Louis, Missouri.**

POSITIONS OPEN

Traineeships in Basic Experimental Hematology. Applications are invited from U.S. citizens for N.I.H. Pre-doctoral and Postdoctoral Traineeships in Basic Experimental Hematology available at New York University. Send curriculum vitae or write for details to:

Dr. Albert S. Gordon
*Laboratory of Experimental Hematology
Department of Biology
New York University
Washington Square
New York, N.Y. 10003

UNIVERSITY OF ALBERTA Faculty of Agriculture VACANCY

Assistant Professor of Animal Biochemistry, Department of Animal Science. Ph.D. in Animal Nutrition or Physiology, major in biochemistry. Duties include teaching; biochemical research with animals and animal products; limited extension work. Starting salary approximately \$8500; to begin preferably July 1, 1966. Forward applications, including curriculum vitae and names of three referees, before May 15, to **Head, Department of Animal Science, University of Alberta, Edmonton, Alberta.**

RESEARCH

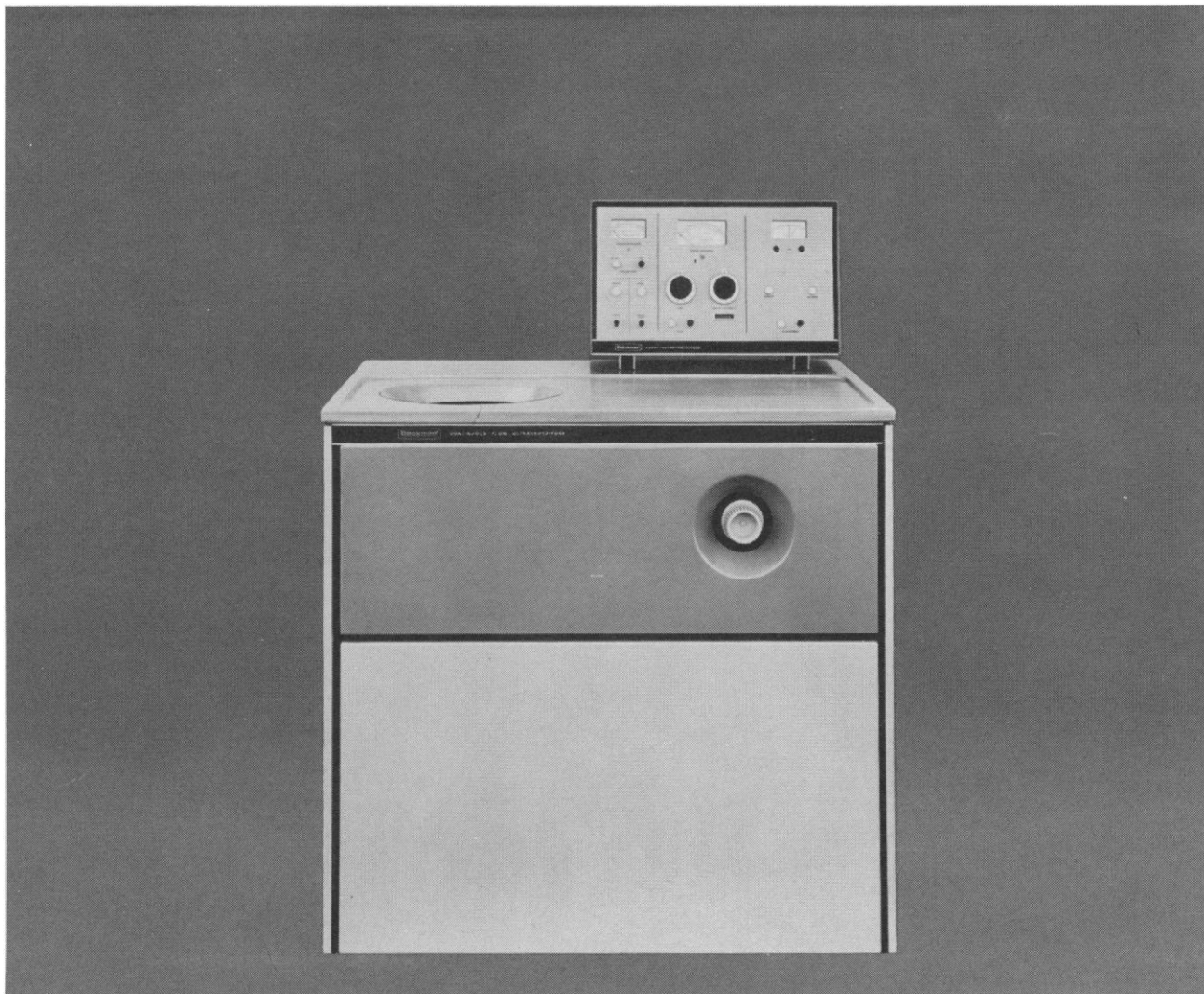
Position open for capable individual trained in biochemistry or related field to collaborate in biochemistry and immunochemistry research. Progressive hospital associated with Northwestern University. Excellent salary commensurate with experience and training. Apply **Box 29, SCIENCE.**

The Market Place

PROFESSIONAL SERVICES

HISTOLOGY SERVICE

RAPID SERVICE Large Orders Quickly Processed! Quickly Shipped! Professional supervision of every order. Free estimates on special problems. Distant points serviced swiftly. Special stains and techniques available. Fully protected shipments. **HISTOLOGY SERVICE, INC.** 4801 N. Broad St., Philadelphia, Pa. Zipcode 19141, (215) DAVenport 4-5800



These three new ultracentrifuges will give you larger volume separations at higher speeds than ever before

The MODEL L4 is a 65,000 rpm Preparative Ultracentrifuge

With its 65,000 rpm drive, the Model L4 can handle the highest force separations possible today, in either swinging bucket or fixed angle rotors. The L4 can use all Model L rotors and the new high speed L2-65 rotors to give you forces to 420,000 *g* and capacities from 15 ml to 1600 ml. And if you want separations on a still larger scale...

The MODEL L4 is also a Zonal Ultracentrifuge

You can put 1725 ml in the L4's large-scale Zonal Rotor. This rotor permits introduction of density gradient and sample solution, and recovery of fractions, during rotation, and gives you 40,000 rpm and 90,000 *g* to induce separations. However, if you want fractions in even greater quantities than you can expect from 1725 ml...

The MODEL L4 is also a Continuous Flow Ultracentrifuge

The L4's Continuous Flow Rotor accepts sample solution at a rate of approximately two liters per hour. As sample solution flows in, supernatant flows out and particles settle in the gradient under a force of 90,000 *g* at 40,000 rpm. For more about this newest ultracentrifuge from Spinco Division of Beckman Instruments, write for Data File L4-5.

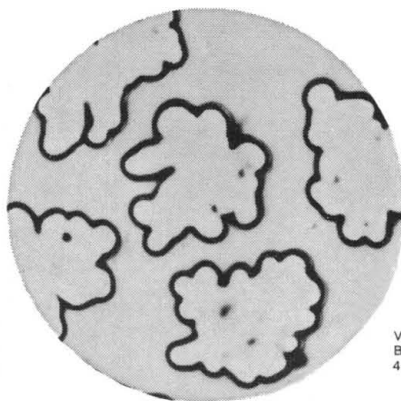
Beckman

INSTRUMENTS, INC.

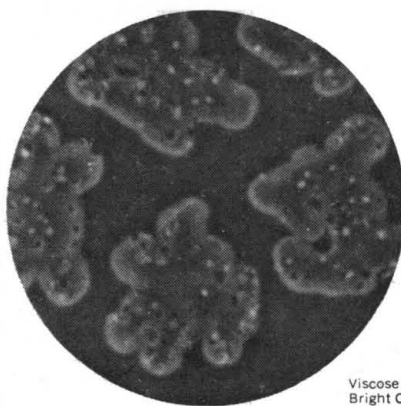
SPINCO DIVISION

PALO ALTO, CALIFORNIA • 94304

INTERNATIONAL SUBSIDIARIES: GENEVA; MUNICH; GLENROTHES, SCOTLAND; TOKYO; PARIS; CAPETOWN; LONDON



Viscose Rayon,
Bright Field,
45X Objective



Viscose Rayon,
Bright Contrast,
45X Objective

New AO Phasestar makes transparent materials look like a checkerboard

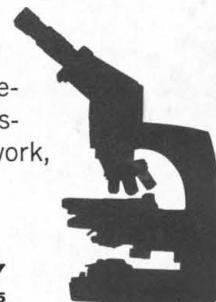
The new AO Phasestar makes the definitive difference with materials too transparent to see with conventional microscopy. Its exceptional resolution and flatness of field, plus its wide range of phase objectives, allow you to see each particle as clearly as if it were a black square placed on a red field.

And AO Phasestar can make the definitive difference in your work, whether it's in biology, medicine, industry or education. You get a superior visual quality that reveals aspects of materials never realized before. You examine unstained specimens without loss of clarity, saving time and possible damage to the specimen. You examine emulsions, slightly pigmented or faded preparations and living organisms under

varying degrees of contrast (bright, dark, B-minus).

AO Phasestar is the first significantly new phase microscope in 20 years. It's unmatched in optical quality, versatility and convenience. The Phase Aperture Viewing Unit simplifies annulus alignment and checking. You can use AO Phasestar for routine bright-field work, dual viewing and photomicrography.

So why don't you look into it? Find out from your AO Sales Representative which models and accessories can do the most for your work, or for more details, write:



AMERICAN OPTICAL COMPANY
INSTRUMENT DIVISION • BUFFALO, NEW YORK 14215