

# I've found it!!

## MY BEST BUY IN LIFE INSURANCE

Have you discovered  
low-cost TIAA coverage?



For example,

A **\$50,000** POLICY COSTS ONLY **\$98** at age 30. Here's how:

### \$50,000 20-Year Home Protection Policy

Age at Issue	25	30	35
Annual Premium ( <i>Payable only 16 Years</i> )	\$134.00	\$159.00	\$206.50
Cash Dividend End of First Year*	55.50	61.00	70.50
First Year Net Premium	\$ 78.50	\$ 98.00	\$136.00

\*These dividends are based upon the 1966 dividend scale and are, of course, not guaranteed.

This is a plan of level premium Term insurance which provides its largest amount of protection initially, reducing by schedule each year over a 20-year period to recognize decreasing insurance needs. There are several other insurance periods, and Home Protection policies are available at all ages under 56.

**ARE YOU ELIGIBLE FOR TIAA?** Yes, if you are employed by a college, university, private school, or other nonprofit educational or scientific institution that qualifies for TIAA eligibility.

Send the coupon for the new Life Insurance Guide and a personal illustration of TIAA policies for your age.

ttaa

Q 1

**TEACHERS INSURANCE AND ANNUITY ASSOCIATION**  
730 Third Avenue, New York, N. Y. 10017

Please send the new Life Insurance Guide and personal illustrations.

Name \_\_\_\_\_ Your Date of Birth \_\_\_\_\_

Address \_\_\_\_\_

Dependents' Ages \_\_\_\_\_

Nonprofit Employer \_\_\_\_\_  
college, university, or other educational or scientific institution

Ranzi (Milan) discussed his results on specific induction by nucleic acid preparations from different organs.

Two special systems were then taken up in greater detail—the embryo of the sea urchin and the hemoglobin-synthesizing system. S. Spiegelman showed some new approaches using both in vitro systems and hybridization techniques. P. R. Gross (Providence) dealt mainly with early protein synthesis in the embryos and its activation. This latter problem, especially from the point of view of activation and controls, was discussed by A. Monroy (Palermo), M. Nemer (Philadelphia), J. Runnström (Stockholm and Naples), and A. S. Spirin (Moscow). The last session was devoted to the synthesis of hemoglobin, a subject which has recently contributed much to the progress of our knowledge of the mechanism of protein synthesis; the discussion was led by P. A. Marks (New York) and C. Baglioni (Naples).

The sponsoring institutions were the Italian National Research Council, the International Union of Biological Sciences, and NATO. It is hoped that this type of interdisciplinary discussion can be resumed at a second international workshop, planned for the spring of 1967 in northern Italy.

G. L. CANTONI

*National Institutes of Health,  
Bethesda, Maryland*

A. MONROY

*University of Palermo, Palermo, Italy*

## Forthcoming Events

### February

15-17. **Radioisotope Applications in Aerospace**, symp., Dayton, Ohio. (P. Polishuk, Flight Dynamics Laboratory, Wright-Patterson AFB, Ohio)

15-18. **Treatment and Storage of Highly Radioactive Waste**, symp., Richland, Wash. (W. H. Regan, Jr., U.S. Atomic Energy Commission, Washington, D.C. 20545)

16-17. **Voluntary Health**, 2nd natl. conf., Chicago, Ill. (Dept. of Community Health and Health Education, American Medical Assoc., 535 N. Dearborn St., Chicago)

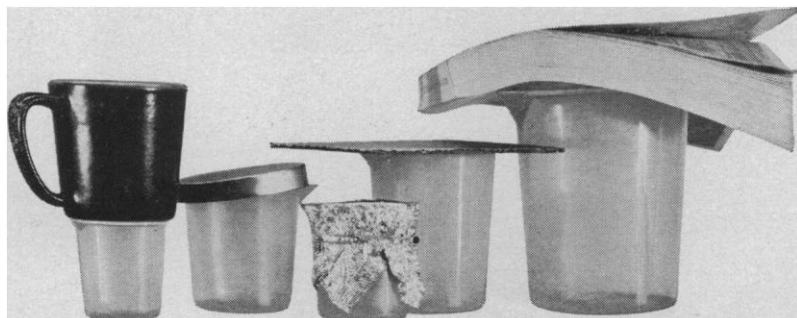
16-18. **Practical Space Applications**, symp., San Diego, Calif. (C. Tross, Box 931, Rancho Santa Fe, Calif.)

16-19. **National Soc. of College Teachers of Education**, Chicago, Ill. (E. H. Goldenstein, Administration Bldg., 413, Univ. of Nebraska, Lincoln 68508)

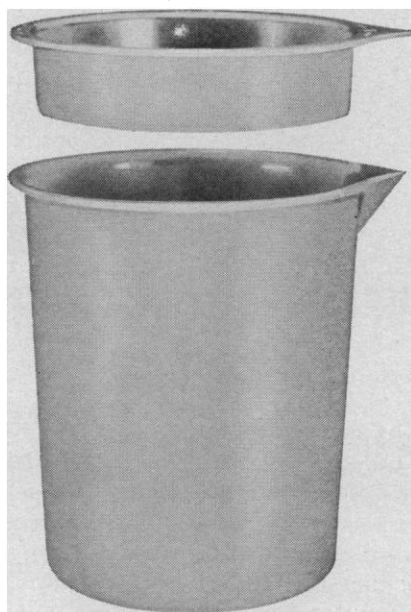
16-19. **Institute of Management Sciences**, annual mtg., Dallas, Tex. (W. M. Campbell, Atlantic Refining Co., P.O. Box 2819, Dallas 75221)

17-19. **American Educational Research**

# Here are some old beaker covers



# Here's the new one



Now you can do away with sandwich wrap and other makeshift beaker lids. New Mallinckrodt AR® plastic beakers are available with rigid covers in all sizes.

These are also the beakers with the exclusive "no-drip lip" that stops pouring instantly as you tilt it back. There's never a leftover drop to run down the side and mess up your work area. You don't have to clean up after AR beakers, because they don't leave rings and puddles on your workbench.

Send for the complete AR Plastics catalog. New ideas in labware from the people who think past the product. Stocked for immediate shipment by your lab supplier.



Assoc., Chicago, Ill. (R. A. Dershimier, The Association, 1201 16th St., NW, Washington, D.C. 20036)

18-20. American Psychopathological Assoc., symp., New York, N.Y. (F. A. Freyhan, The Association, Natl. Inst. of Mental Health, c/o St. Elizabeths Hospital, Washington, D.C. 20032)

19. Pleistocene of Ohio, interdisciplinary conf., Ohio Acad. of Science, Columbus. (J. L. Forsyth, Dept. of Geology, Bowling Green State Univ., Bowling Green, Ohio)

21-25. Analytical Chemistry and Applied Spectroscopy, Pittsburgh, Pa. (R. E. Hein, Mellon Inst., 4400 Fifth Ave., Pittsburgh 15213)

21-25. Society for Nondestructive Testing, spring natl. conv., Los Angeles, Calif. (E. L. Criscuolo, U.S. Naval Ordnance Laboratory, White Oak, Silver Spring, Md.)

21-25. Non-Elastic Processes in the Upper Mantle, symp., Upper Mantle Committee, Intern. Union of Geodesy and Geophysics, Newcastle, England. (D. C. Tozer, School of Physics, The University, Newcastle-upon-Tyne, 1, England)

22-24. Offshore Exploration, 1st conf., Long Beach, Calif. (P.O. Box 88, 2550 Via Tejon, Palos Verdes Estates, Calif.)

22-26. Canadian Assoc. of Radiologists, 29th annual, Montreal, Quebec. (The Association, 1555 Summerhill Ave., Montreal)

23-25. Biophysical Soc., 10th annual mtg., Boston, Mass. (J. Baruch, Bolt, Beranek and Newman Inc., 50 Moulton St., Cambridge, Mass. 02138)

24-26. American Acad. of Forensic Sciences, Chicago, Ill. (S. R. Gerber, Law-Medicine Center, Western Reserve Univ., Cleveland, Ohio 44106)

24-26. Interdisciplinary Aspects of Radiative Energy Transfer, Philadelphia, Pa. (J. J. Welsh, Space Sciences Laboratory, General Electric Co., Box 8555, Valley Forge, Pa.)

25-26. Thoracic Soc., spring mtg., London, England. (H. M. Foreman, Sully Hospital, Sully, Glamorganshire, England)

27-3. American Inst. of Mining, Metallurgical, and Petroleum Engineers, annual mtg., New York, N.Y. (The Institute, 345 E. 47 St., New York 10017)

27-4. International Anesthesia Research Soc., Bal Harbour, Fla. (A. W. Friend, 227 Wade Park Manor, Cleveland, Ohio)

28-4. Aerial Triangulation, symp., Urbana, Ill. (M. B. Scher, Intern. Soc. for Photogrammetry, Commission 3, 9701 East Light Dr., Falls Church, Va.)

28-4. American Crystallographic Assoc., mtg., Univ. of Texas, Austin. (W. L. Kehl, Gulf Research and Development Co., P.O. Drawer 2038, Pittsburgh, Pa. 15230)

28-4. American Assoc. of Junior Colleges, 46th annual conv., St. Louis, Mo. (The Association, 1315 16th St., NW, Washington, D.C. 20036)

## March

1-2. Dairy Engineering, natl. conf., Michigan State Univ., East Lansing. (C. W. Hall, Agricultural Engineering Dept., Michigan State Univ., East Lansing)

1-3. Space Maintenance and Extravehicular Activities, natl. conf., Orlando, Fla. (M. B. Goldman, Mail No. 302, Martin Co., Baltimore, Md. 21203)

1-10. **Industrial Development** in the Arab Countries, regional symp., Kuwait. (Intern. Agency Liaison Branch, Office of the Director General, Food and Agriculture Organization, Via delle terme di Caracalla, Rome, Italy)

2-4. **Air Pollution Medical Research**, AMA conf., Los Angeles, Calif. (Dept. of Environmental Health, American Medical Assoc., 535 N. Dearborn St., Chicago, Ill. 60610)

2-4. **Plasmadynamics**, conf., Monterey, Calif. (American Inst. of Aeronautics and Astronautics, 1290 Sixth Ave., New York 10019)

2-4. **Scintillation and Semiconductor Counters**, 10th symp., Washington, D.C. (W. A. Higinbotham, Brookhaven Natl. Laboratory, Upton, L.I., N.Y.)

3-4. Louisiana Soc. for **Electron Microscopy**, 3rd annual symp., New Orleans. (W. R. Goynes, Southern Regional Research Laboratory, Box 19687, New Orleans)

3-5. Central **Surgical Assoc.**, Chicago, Ill. (C. E. Lischer, 457 N. Kingshighway, St. Louis 8, Mo.)

4-5. **Cineradiology**, 5th symp., Rochester, N.Y. (R. Gramiak, Div. of Diagnostic Radiology, Univ. of Rochester Medical Center, Rochester 14620)

4-6. American Assoc. of **Pathologists and Bacteriologists**, 63rd annual mtg., Cleveland, Ohio. (P. Fitzgerald, Downstate Medical Center, 450 Clarkson Ave., Brooklyn 3, N.Y.)

5-7. Society for American **Archaeology**, 31st annual mtg., Univ. of Nevada, Reno. (D. D. Fowler, Dept. of Anthropology, Univ. of Nevada, Reno 89507)

5-10. International Acad. of **Proctology**, 18th annual conv., Miami Beach, Fla. (A. F. Cantor, 147-41 Sanford Ave., Flushing, N.Y. 11355)

6-11. American Soc. of **Photogrammetry**, Washington, D.C. (C. E. Palmer, 5917 Brookview Dr., Brookland Estates, Alexandria, Va.)

7-9. **Fundamental Cancer Research**, 20th annual symp., Univ. of Texas, Houston. (M. Mandel, Dept. of Biology, M. D. Anderson Hospital and Tumor Inst., Univ. of Texas, Houston 77025)

7-9. **Electric Propulsion**, 5th conf., American Inst. of Aeronautics and Astronautics, San Diego, Calif. (A. T. Forrester, Electro-Optical Systems, Inc., 300 N. Halstead St., Pasadena, Calif. 91107)

7-9. **Space**, 3rd congr., Cocoa Beach, Fla. (R. M. Barnes, PAA-Guided Missiles Range Div., Bldg. 423, MU 111, Patrick Air Force Base, Fla.)

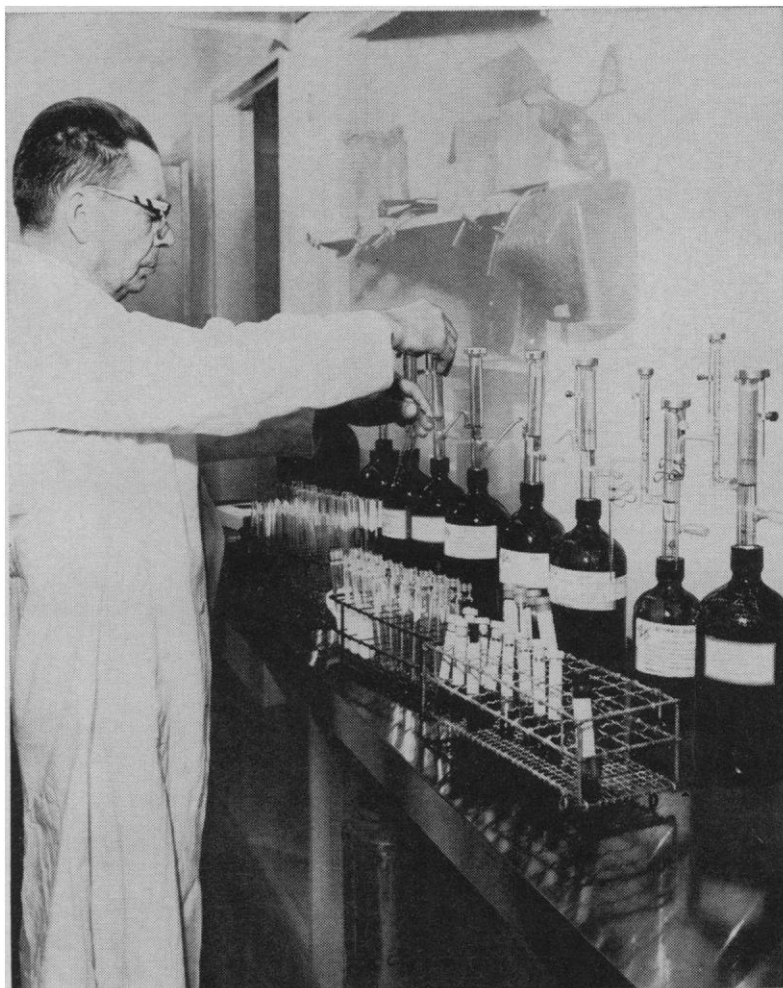
7-11. American Soc. for **Metals**, western metal and tool exposition and conf., Los Angeles, Calif. (The Society, Metals Park, Ohio)

7-11. Society of **Plastics Engineers**, 22nd annual technical conf., Montreal, P.Q., Canada. (G. L. Bata, Union Carbide Canada, Ltd., P.O. Box 700, Pointe-aux-Trembles, P.Q.)

7-12. Inter-American **Nuclear Energy Commission**, 6th mtg., Washington, D.C. (J. D. Perkinson, Jr., Pan American Union, Washington 20006)

8-3. World **Meteorological Organization**, commission for synoptic meteorology, 4th session, Wiesbaden, Germany. (WMO, 41, avenue Giuseppe Motta, Geneva, Switzerland)

4 FEBRUARY 1966



L/I instruments automate procedures at Alta Bates Community Hospital, Berkeley, California. Chief Chemist, Robert De Boton. Tests are cholesterol, uric acid, glucose, and creatinine.

## WHY DISPENSE FROM OPEN CONTAINERS? (You Don't with L/I Automatic REPIPETS\* and Dilutors\*)

No dirt, particulates, moisture or CO<sub>2</sub> can contaminate your reagents when you use L/I instruments. Because every L/I REPIPET and Dilutor has an air filter, fits air-tight *directly* on your reagent vessel, and is supplied with an air inlet tube and plastic cap. A wad of cotton in the cap keeps out particulates. Moisture and CO<sub>2</sub> are removed by attaching Aquasorb® or Malcosorb® filters.

L/I REPIPETS and Dilutors dispense and dilute *any* reagent, hot or cold, with a guaranteed accuracy of 1%, reproducibility  $\pm 0.1\%$ . Volumes? From microliters to deciliters. Cleanup? None.

Dilutors \$89.50, including complete set of tips for highest precision in all ranges. REPIPETS \$45. Immediate delivery in 1, 10, 20 and 50 ml sizes. Write for six-page brochure which gives complete details and specific clinical and chemical procedures.

\*Patents Pending, REPIPETS (REpetitive PIPETS) and Dilutors



# LABINDUSTRIES

1802 M Second Street, Berkeley, California 94710

Phone: TH 3-0220, Cable LABIND

# RUGGED YET FAST-ACTING—THE NEW PHOTOVOLT ELECTRODES

Always ready for immediate use. Adaptable for all makes and models of pH meters. Manufactured in Photovolt's own U.S.A. plant. Choose from more than 20 different types.



## First American Edition

### Prevot's Anaerobic Bacteria

By ANDRÉ R. PRÉVOT, Chef de Service,  
L'Institut Pasteur, Paris.

*Translated and updated*

By V. FREDETTE, D.Sc., Associate-Director,  
Institut de Microbiologie et D'Hygiène  
de L'Université de Montréal.

Prevot's authoritative MANUAL FOR THE CLASSIFICATION AND DETERMINATION OF THE ANAEROBIC BACTERIA is the comprehensive guide on methods of precise biological diagnoses, not only of the species but also of types and varieties. More detailed than other manuals, this first English-language edition reflects precise knowledge of the habitat, morphology, physiology, cultural characteristics, biochemical properties and pathogenicity of each of the 470 species and varieties. Ready in March.

From the 3rd French edition. Approx. 400 Pages.

**Additional Information Gladly Furnished on Request**

Washington  
Square

**LEA & FEBIGER**

Philadelphia  
Pa. 19106

9-11. **Ethics in Medical Progress**, Ciba Foundation symp., London, England. (Ciba Foundation, 41 Portland Pl., London W.1)

9-13. **Teaching Machines and Programmed Instruction**, intern. symp., Nürtingen, Germany. (Arbeitsgemeinschaft Programmierte Instruktion, Inst. für Kybernetik, Pädagogische Hochschule Berlin, Malteserstr. 74-100, 1 Berlin 46)

10-11. **Heat Transfer to Non-Newtonian Fluids**, 12th annual heat transfer conf., Oklahoma State Univ., Stillwater. (J. D. Parker, Dept. of Mechanical Engineering, Oklahoma State Univ., Stillwater 74075)

11-13. **National Council of Teachers of Mathematics**, San Diego, Calif. (J. D. Gates, 1201 16th St., NW, Washington, D.C. 20036)

11-13. **National Wildlife Federation**, annual mtg., Pittsburgh, Pa. (T. L. Kimball, 1412 16th St., NW, Washington, D.C. 20036)

12-13. **Linguistics**, 11th natl. conf., Linguistic Circle of New York, N.Y. (L. Pap, State Univ. College, New Paltz, N.Y. 12561)

14-16. **Society of Toxicology**, annual scientific mtg., Williamsburg, Va. (C. S. Weil, Mellon Inst., 4400 Fifth Ave., Pittsburgh, Pa. 15213)

14-16. **Wildlife and Natural Resources**, 31st North American conf., Pittsburgh, Pa. (C. R. Gutermuth, Wildlife Management Inst., Wire Bldg., Washington, D.C. 20005)

14-20. **Obstetrics and Gynecology**, 8th Australian congr., Hobart. (J. F. Correy, 173 Macquaire St., Hobart)

14-6 May. **Extraordinary Administrative Aeronautical Radio Conf.**, 2nd session, Geneva, Switzerland. (Intern. Telecommunication Union, Place des Nations, Geneva)

15-16. **Flame Resistant Polymers**, conf., London, England. (Secretary, Plastics Inst., 6 Mandeville Pl., London, W.1)

15-18. **Optical Soc. of America**, spring mtg., Washington, D.C. (M. E. Waga, 1155 16th St., NW, Washington, D.C. 20006)

17-19. **Isobaric Spin in Nuclear Physics**, intern. conf., Florida State Univ., Tallahassee. (D. Robson, Dept. of Physics, Florida State Univ., Tallahassee)

18-19. **Rural Health**, conf., Colorado Springs, Colo. (B. L. Bible, 535 N. Dearborn St., Chicago, Ill. 60610)

18-20. **American Psychosomatic Soc.** annual mtg., Chicago, Ill. (W. A. Greene, The Society, 265 Nassau Rd., Roosevelt, N.Y. 11575)

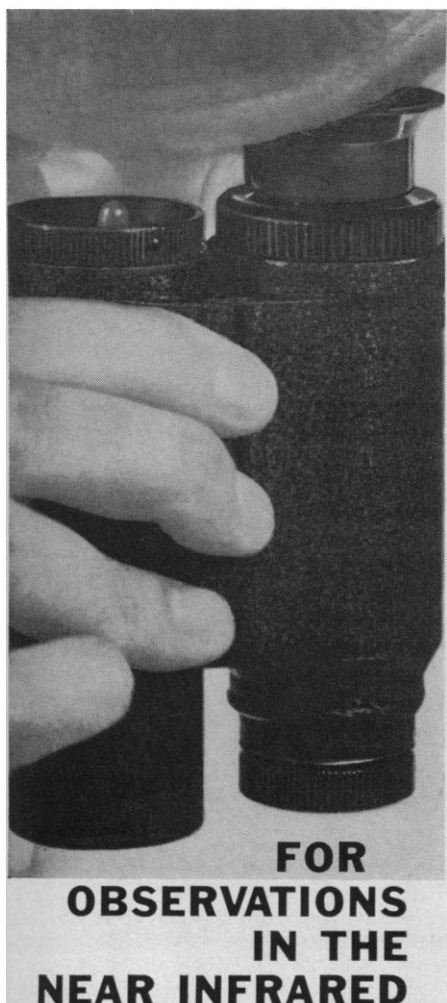
20-23. **Solar Energy Soc.**, 2nd annual mtg., Boston, Mass. (F. Edlin, Arizona State Univ., Tempe 85281)

21-24. **Aerospace Instrumentation**, 4th intern. symp., College of Aeronautics, Cranfield, England. (E. K. Merewether, ISA Aerospace Industry Div., 4515 Canoga Ave., Woodland Hills, Calif.)

21-25. **Institute of Electrical and Electronics Engineers**, intern. conv., New York, N.Y. (IEEE, 345 E. 47 St., New York 10017)

22-23. **Biomagnetism**, 3rd intern. symp., Univ. of Illinois, Chicago. (M. F. Bar-nothy, Univ. of Illinois, 833 S. Wood St., Chicago)

22-23. **Modern Concepts of Cardiovas-**



**FOR  
OBSERVATIONS  
IN THE  
NEAR INFRARED**

## **DETECTIRSCOPE®** INFRARED VIEWER

The DETECTIRSCOPE® provides convenient direct viewing from 4,000 to 13,000 Å (peak response at 8,500 Å). Wherever near infrared penetrates—many organic materials, textile dyes, histological stains, crystals, chitinous materials and corneal opacities—the DETECTIRSCOPE® may reveal detail not otherwise observable. Useful for observation of near infrared phenomena—reflectance, transmission, absorption, luminescence and lasers—and wherever operations must be carried out in total darkness.

Standard tube resolution is 25 line-pairs/mm. Power supply is built in. An IR illuminator that may be attached directly to the viewer is also available.

Write for your copy of Varo's new reports on near infrared applications. Reports available on Near Infrared in Electronics; Medicine; Biology; Fine Arts; Criminology; Mineralogy and Crystallography; and Miscellaneous Applications of Near Infrared. Specify reports desired.



**VARO INC**

**ELECTRONIC PRODUCTS DIVISION**  
2201 WALNUT ST., GARLAND, TEXAS 75041  
(AREA CODE 214) 276-6141

**cular Diseases**, conf. and workshop, Reno, Nev. (G. T. Smith, Laboratory of Pathophysiology, Univ. of Nevada, Reno 89507)

22-24. **Measurement and Applications of Neutron Cross Sections**, conf., Washington, D.C. (W. W. Havens, Dept. of Physics, Columbia Univ., 538 W. 120 St., New York 10027)

22-31. **American Chemical Soc.**, spring mtg., Pittsburgh, Pa. (ACS, 1155 16th St., NW, Washington, D.C.)

23-25. **Institute of Mathematical Statistics**, Purdue Univ., Lafayette, Ind. (G. E. Nicholson, Jr., Univ. of North Carolina, Chapel Hill)

23-25. **Modern Methods of Weather Forecasting and Analysis**, Chicago, Ill. (J. R. Fulks, U.S. Weather Bureau, 5730 S. Woodlawn Ave., Chicago)

24-26. **Biomathematics and Computer Science in the Life Sciences**, symp., Houston, Tex. (Dean, Div. of Continuing Education, Univ. of Texas Graduate School of Biomedical Sciences, Texas Medical Center, Houston 77025)

24-26. **Pediatric and Adolescent Gynecology**, conf., New York Acad. of Sciences, New York. (W. R. Lang, Jefferson Medical College of Philadelphia, 1025 Walnut St., Philadelphia, Pa.)

24-26. **Pollution and Marine Ecology**, conf., Galveston, Tex. (S. M. Ray, Texas A&M Univ. Marine Laboratory, Galveston 77550)

24-27. **International Assoc. for Dental Research**, 44th general mtg., Miami, Fla. (G. H. Rovelstad, U.S. Navy Dental School, Natl. Naval Medical Center, Bethesda, Md. 20014)

25-26. **National Assoc. of Biology Teachers**, western regional conv., Los Angeles, Calif. (The Association, Professional Building, Great Falls, Mont.)

26-2. **Stress Analysis**, 3rd intern. conf., Berlin, Germany. (H. Kotthaus, Verein Deutscher Ingenieure, Prinz-Georg Str. 77/79, 4 Düsseldorf 10)

26-27. **Arizona Chest Disease Symp.**, Tucson. (E. A. Oppenheimer, P.O. Box 6067, Tucson 85716)

27-30. **American Assoc. of Dental Schools**, Miami Beach, Fla. (R. Sullens, 840 N. Lake Shore Dr., Chicago, Ill.)

28-30. **Great Lakes Research**, 9th conf., Chicago, Ill. (B. M. McCormac, IIT Research Inst., 10 W. 35 St., Chicago 60616)

28-31. **Collegium Intern. Neuro-Psychopharmacologicum**, 5th biennial mtg., Washington, D.C. (M. K. Taylor, 3636 16th St., NW, Washington 20010)

29-31. **Airborne Infection**, 2nd intern. conf., Illinois Inst. of Technology, Chicago. (E. K. Wolfe, U.S. Army Biological Laboratories, Fort Detrick, Frederick, Md.)

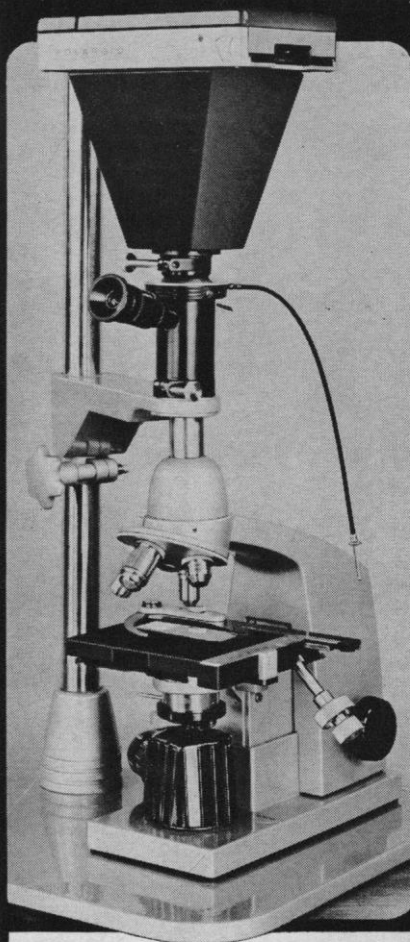
29-31. **Applied Meteorology**, 6th natl. conf., Los Angeles, Calif. (B. N. Charles, Booz-Allen Applied Research, 6151 W. Century Blvd., Los Angeles 90045)

29-31. **Chemical Soc.**, anniversary mtgs., Oxford, England. (General Secretary, Burlington House, London W.1)

29-31. **Surface-Active Substances**, intern. conf., Berlin, East Germany. (Inst. für Fettchemie, Deutsche Akademie der Wissenschaften zu Berlin, Rudower Chaussee 5, 1199 Berlin-Adlershof)

29-31. **Symbolic and Algebraic Manipulation**, symp., Assoc. for Computing Machinery, Washington, D.C. (J. E. Sammet,

## **Photomicrographs IN SECONDS**



The REICHERT Photomicrographic Camera accommodates:

Polaroid Land pack film back for instant 3¼ x 4¼" color or black and white photos as well as 35 mm. camera backs.

Shutter speeds 1 sec. to 1/125 sec. plus T&B; synchronized for electronic flash.

Beam splitter and focusing telescope permits simultaneous observation and focusing during exposure.

Fits directly on your microscope.

*Hacker*

For particulars or demonstration, write to:

**WILLIAM J. HACKER & CO., INC.**

Box 646, W. Caldwell, N. J.  
CA 6-8450 (Code 201)

I.B.M. Corp., 545 Technology Sq., Cambridge, Mass. 02139)

29-1. American Assoc. for **Contamination Control**, 5th annual technical mtg., Houston, Tex. (W. T. Maloney, The Association, 6 Beacon St., Boston, Mass. 02108)

29-1. Ultraviolet and X-ray **Spectroscopy of Laboratory and Astrophysical Plasma**, conf., Abingdon, England. (Inst. of Physics and the Physics Soc., 47 Belgrave Sq., London, S.W.1, England)

30. **Oral Cancer**, 4th symp., St. Francis Hospital, Poughkeepsie, N.Y. (M. A. Engelman, 1 E. Academy St., Wappingers Falls, N.Y.)

30-1. **Magnetohydrodynamics**, 7th symp., Princeton, N.J. (R. G. Jahn, Guggenheim Laboratories, Forrestal Research Center, Princeton, N.J. 08540)

31-2. **Michigan Acad. of Science, Arts, and Letters**, Wayne State Univ., Detroit. (E. A. Wunsch, Dept. of English, Univ. of Michigan, Ann Arbor)

#### April

1-2. **Alabama Acad. of Science**, Birmingham-Southern College, Birmingham. (W. B. DeVall, Dept. of Forestry, Auburn Univ., Auburn, Ala.)

1-2. **Arkansas Acad. of Science**, Little Rock. (G. E. Templeton, Univ. of Arkansas, Fayetteville)

1-5. **National Science Teachers Assoc.**, New York, N.Y. (R. H. Carleton, 1201 16th St., NW, Washington, D.C. 20036)

1-7. **American Acad. of General Practice**, Boston, Mass. (M. F. Cahal, Volker

Blvd. at Brookside, Kansas City 12, Mo.)

4-6. **Atomic Energy Soc. of Japan**, annual mtg., Tokyo. (M. Masamoto, Japan Atomic Energy Research Inst., 1-1, Shibata-mura-cho, Minato-ku, Tokyo)

4-6. **Exobiology**, conf., Ames Research Center, Moffett Field, Calif. (Letters and Science Extension, Univ. of California, Berkeley 94720)

4-6. **American Assoc. of Physical Anthropologists**, Berkeley, Calif. (F. E. Johnston, Dept. of Anthropology, Univ. of Pennsylvania, Philadelphia 19104)

4-7. **Federation of European Biochemical Soc.**, 3rd mtg., Warsaw, Poland. (T. Klopotoski, Polish Biochemical Soc., Freta 16, Warsaw)

4-7. **Advances in Water Quality Improvement**, conf., Univ. of Texas, Austin. (Special Lecture Series, Engineering Laboratories Bldg. 305, Univ. of Texas, Austin 78712)

4-8. **International Biological Program**, 2nd general assembly, Paris, France. (F. W. G. Baker, 2 via Sebenico, Rome, Italy)

4-10. **Psychology**, 10th inter-American congr., Lima, Peru. (Intern. Soc. of Psychology, 2104 Meadowbrook Dr., Austin, Tex.)

5-7. **Middle East Neurosurgical Soc.**, mtg., Jerusalem, Jordan. (F. S. Haddad, Orient Hospital, Beirut, Lebanon)

5-8. **American Assoc. of Anatomists**, San Francisco, Calif. (R. T. Woodburne, Dept. of Anatomy, Univ. of Michigan, Ann Arbor 48104)

6-7. **Phlebology**, 6th intern. mtg., Aix-

en-Provence, France. (F. Beurier, 94, cours Sextius, Aix-en-Provence)

6-8. **Electron and Laser Beam Technology**, Univ. of Michigan, Ann Arbor. (G. I. Haddad, Electrical Engineering Dept., Univ. of Michigan, Ann Arbor)

6-8. **Recent Advances in Phytochemistry**, intern. symp., Univ. of Texas, Austin. (T. J. Mabry, Dept. of Botany, Univ. of Texas, Austin 78712)

6-8. **Plant Phenolic Group** of North America, 6th annual mtg., Austin, Tex. (V. C. Runeckles, Imperial Tobacco Co., Montreal, P.Q., Canada)

7-8. **Southern Sociological Soc.**, annual mtg., New Orleans, La. (J. J. Honigmann, Dept. of Anthropology, Univ. of North Carolina, Chapel Hill)

7-9. **Southern Soc. for Philosophy and Psychology**, New Orleans, La. (G. R. Hawkes, U.S. Army Medical R&D Command, Washington, D.C. 20315)

8-11. **Animal Toxins**, intern. symp., Atlantic City, N.J. (F. E. Russell, Box 323, Los Angeles County General Hospital, 1200 N. State St., Los Angeles, Calif. 90033)

11-12. **American Soc. for Artificial Internal Organs**, Atlantic City, N.J. (B. K. Kusserow, Dept. of Pathology, Univ. of Vermont College of Medicine, Burlington)

11-13. **Institute of Electrical and Electronics Engineers**, Region 3, conv., Atlanta, Ga. (M. D. Price, Dept. 72-14, Zone 400, Lockheed-Georgia Co., Marietta, Ga. 30061)

11-13. **Comparative Hemoglobin Structure**, intern. symp., Salonika, Greece. (Secretary, P.O. Box 201, Salonika)

11-15. **Aeronomic Studies of Lower Ionosphere**, conf., Ottawa, Ont., Canada. (W. Pfister, Air Force Cambridge Research Laboratories, Upper Atmosphere Physics Laboratory, L. G. Hanscom Field, Bedford, Mass.)

11-15. **American Assoc. of Cereal Chemists**, New York, N.Y. (R. J. Tarleton, The Association, 1955 University Ave., St. Paul, Minn. 55104)

11-16. **Federation of American Societies for Experimental Biology**, 50th annual mtg., Atlantic City, N.J. The following societies will meet in conjunction with the FASEB; information may be obtained from FASEB, 9650 Rockville Pike, Bethesda, Maryland 20014:

American Physiological Society

American Soc. of Biological Chemists

American Soc. for Pharmacology and Experimental Therapeutics

American Soc. for Experimental Pathology

American Inst. of Nutrition

American Assoc. of Immunologists

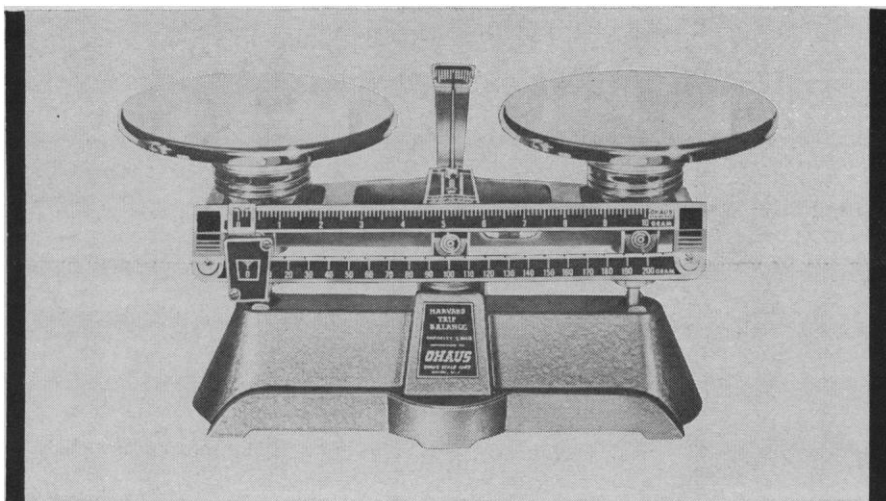
11-20. **Oceanography**, intern. conf., Moscow, U.S.S.R. (R. C. Vetter, Committee on Oceanography, Natl. Acad. of Sciences, 2101 Constitution Ave., NW, Washington, D.C. 20418)

12-13. **Frontiers in Food Research**, symp., Cornell Univ., Ithaca, N.Y. (W. F. Shipe, Dept. of Dairy and Food Science, Cornell Univ., Ithaca)

12-14. **Generalized Networks**, intern. symp., New York, N.Y. (H. J. Carlin, Polytechnic Inst. of Brooklyn, 333 Jay St., Brooklyn, N.Y. 11201)

12-14. **Remote Sensing of Environment**, 4th symp., Univ. of Michigan, Ann Arbor.

## WE BUILD KNIFE-EDGE\* BALANCES



### for instance . . . take this versatile HARVARD TRIP BALANCE

Versatility and quality have made this proven balance the standard of the industry.

Total capacity of 2 kg. with sensitivity of 0.1 gram . . . plus . . . your choice of three platforms in any weighing standard.

Illustrated: Model 1550-S .....\$24.00

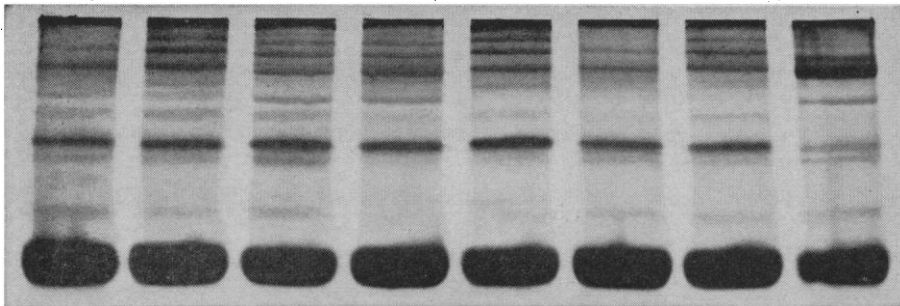
101

**OHAUS SCALE CORPORATION**  
1050 COMMERCE AVENUE • UNION, NEW JERSEY

dept. AF



# 1,2,3,4,5,6,7,8



UNRETOUCHED PHOTOGRAPH

Eight serum samples on a single acrylamide gel—Reproducible and Intercomparable.

## Eight\* samples on the same gel slab; compare and analyze them together.

The serum samples above have been separated simultaneously on a single gel slab. Electrophoretic conditions were identical for each sample.

- To prepare: pour in *single* gel solution (not eight) and apply samples directly into sample slots.
- After running, stain *together*, destain *together*, and evaluate *together*.
- Total procedure requires less working time than any other method.

\*Twelve place sample slot former also available.

Circle Reader Service Card for data sheets and bibliography.

# E-C

**APPARATUS CORPORATION**  
ELECTROPHORESIS/COUNTERCURRENT  
220 S. 40th St., Philadelphia, Pa. 19104 ■ PHONE: Area Code 215-382-2204

Self Sticking

# TIME

## TAPES & LABELS

(we make them)

You can use them in . . . . .

**OVENS • STERILIZERS • AUTOCLAVES  
INCUBATORS • WATER BATHS  
OIL BATHS • DEEP FREEZERS  
REFRIGERATORS**



Write for complete information  
about our full line of Laboratory  
Tapes and Labels

**PROFESSIONAL TAPE COMPANY, INC.**  
365 East Burlington Road, Riverside, Ill. 60546

(Extension Service, Conference Dept., Univ. of Michigan, Ann Arbor 48104)

12-15. **Quantum Electronics**, intern. conf., Phoenix, Ariz. (J. P. Gordon, Bell Telephone Laboratories, Murray Hill, N.J.)

12-16. Society for Applied **Mathematics and Mechanics**, annual scientific mtg., Darmstadt, Germany. (F. Reutter, Gesellschaft für Angewandte Mathematik und Mechanik, Templergraben 55, 51, Aachen, Germany)

12-29. **Soil Conservation**, 1st Pan American congr., São Paulo, Brazil. (J. Abramides Neto, avda. Francisco Matarazzo 455, Caixa Postal 8366, São Paulo)

13-15. Institute of **Environmental Sciences**, 12th annual tech. mtg. and equipment exp., San Diego, Calif. (The Institute, 34 S. Main St., Mount Prospect, Ill. 60057)

13-16. American **Orthopsychiatric Assoc.**, 43rd annual mtg., San Francisco, Calif. (M. F. Langer, The Association, 1790 Broadway, New York 10019)

13-16. American **Radium Soc.**, annual mtg., Phoenix, Ariz. (J. L. Pool, Memorial Soc., 444 E. 68 St., New York 10021)

13-16. National Council of **Teachers of Mathematics**, 44th annual mtg., New York, N.Y. (J. D. Gates, 1201 16th St., NW, Washington, D.C. 20036)

14-15. British **Biophysical Soc.**, spring mtg., Oxford, England. (D. Noble, Balliol College, Oxford)

14-15. **Molecular Interactions and the Crystallography of Ceramics**, Univ. of Nottingham, Nottingham, England. (S. C. Wallwork, Dept. of Chemistry, Univ. of Nottingham, University Park, Nottingham)

14-16. Association of Southeastern **Biologists**, Raleigh, N.C. (M. Y. Menzel, Dept. of Biological Sciences, Florida State Univ., Tallahassee)

14-16. American **Cleft Palate Assoc.**, Mexico City, Mexico. (C. G. Wells, Parker Hall, Univ. of Missouri, Columbia)

14-16. Eastern **Psychological Assoc.**, New York, N.Y. (M. A. Iverson, Queens College, Flushing, N.Y. 11367)

14-17. American Assoc. of **Endodontists**, 23rd annual mtg., San Francisco, Calif. (J. F. Bucher, 6828 Winterberry Lane, Bethesda, Md. 20034)

14-19. American **Dermatological Assoc.**, Hot Springs, Va. (R. R. Kierland, Mayo Clinic, Rochester, Minn.)

14-20. **Geodetical Measuring Technique and Instruments**, conf., Budapest, Hungary. (F. Raum, Preparatory Committee of the Conference, Technika Haza, Szabadsag ter 17, Budapest 5)

15-16. Iowa **Acad. of Science**, Pella. (G. W. Peglar, Dept. of Mathematics, Iowa State Univ., Ames)

15-16. Montana **Acad. of Sciences**, Missoula. (L. H. Harvey, Univ. of Montana, Missoula 59801)

15-17. American Soc. of **Internal Medicine**, New York, N.Y. (A. O. Whitehall, 3410 Geary Blvd., San Francisco, Calif. 95118)

17-20. **Electron and Ion Beam Science and Technology**, 2nd intern. conf., American Inst. of Mining, Metallurgical, and Petroleum Engineers, New York, N.Y. (H. N. Appleton, 345 E. 47 St., New York 10017)