

national Series of Monographs on Analytical Chemistry, vol. 7.

Higher Algebra: Linear Algebra, Polynomials, General Algebra. A. P. Mishina and I. V. Proskuryakov. Translated from the Russian edition (Moscow, 1962) by Ann Swinfen. Pergamon, New York, 1965. 289 pp. Illus. \$9.50. International Series of Monographs on Pure and Applied Mathematics, vol. 80.

Progress in Oceanography. vol. 3, M. Sears, Ed. Pergamon, New York, 1965. 433 pp. Illus. \$15.50. Volume 3, which contains 39 papers, is dedicated to Hans Pettersson, on the occasion of his 75th birthday.

Representation Theory of Finite Groups. Martin Burrow. Academic Press, New York, 1965. 195 pp. Illus. Paper, \$3.45; cloth, \$6.50. Academic Paperback in Mathematics.

Signals, Systems, and Communication. B. P. Lathi. Wiley, New York, 1965. 627 pp. Illus. \$14.95.

Space Communications Systems. Richard F. Filipowsky and Eugen I. Muehl-dorf. Prentice-Hall, Englewood Cliffs, N.J., 1965. 591 pp. Illus. \$14.90. Prentice-Hall International Series in Space Technology, edited by C. W. Besserer and Floyd E. Nixon.

Stars and Stellar Systems. vol. 5, *Galactic Structure.* Adriaan Blaauw and Maarten Schmidt, Eds. Univ. of Chicago Press, Chicago, 1965. 626 pp. Illus. \$15. Twenty-three papers.

Statistical Methods. Stefan Szulc. Translated from the Polish by J. Stadler. H. Infeld and C. D. I. Forrester, Translation Eds. Pergamon, New York, 1965. 674 pp. Illus. \$17.50.

Structural Synthesis of High-Accuracy Automatic Control Systems. M. V. Meerov. Translated from the Russian edition by John P. Ruban. G. L. Ashdown, Translation Ed. Pergamon, New York, 1965. 365 pp. Illus. \$15.

Switching Theory. vol. 2, *Sequential Circuits and Machines.* Raymond E. Miller. Wiley, New York, 1965. 264 pp. Illus. \$11.50.

Tables of Lagrange Interpolation Coefficients. K. A. Karpov. Translated from the Russian edition (Moscow, 1954) by D. E. Brown. Pergamon, New York, 1965. 82 pp. \$5.75. Mathematical Tables Series, vol. 28.

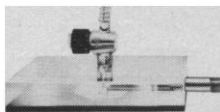
Ten-Decimal Tables of the Logarithms of Complex Numbers and for the Transformation from Cartesian to Polar Coordinates. L. A. Lyusternik, Ed. Translated from the Russian edition (Moscow, 1952) by D. E. Brown. Pergamon, New York, 1965. 122 pp. \$7.50. Mathematical Tables Series, vol. 33.

Vacuum Science and Engineering. Properties of gases at low pressure; vacuum measurements; design and operating features of vacuum pumps and systems. C. M. Van Atta. McGraw-Hill, New York, 1965. 475 pp. Illus. \$15.

Valence Theory. J. N. Murrell, S. F. A. Kettle, and J. M. Tedder. Wiley, New York, 1965. 415 pp. Illus. \$7.75.

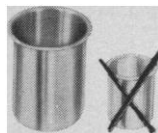
Wholes and Parts: A General Theory of System Behaviour. Oskar Lange. Translated from the Polish edition (Warsaw, 1962) by Eugeniusz Lepa. Pergamon, New York, 1965. 80 pp. Illus. \$5.

NEW! Only LAB-LINE offers these 6 exclusive features in one FREEZE-DRYER!*



SPEED

Surpasses them all in speed. Handles 1 to 4 liters in 24 hours, or less.



CAPACITY

Trap holds from 5 to 12 liters of sublimation, depending on model. Automatic defrost, too!

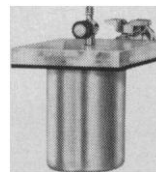


SAFETY

Implosion-proof! Exclusive Vacu-Plate* "window" permits safe viewing of lyophilization.



Heated canopy models speed lyophilization and eliminate frosting on flasks and trays.



BULK DRYING

Accepts trays, bowls, or pans to 11" diameter. Permits bulk drying in wide-neck glassware.



MANIFOLD DRYING

Unique Vacu-Plate* attaches in seconds to any freeze-dryer with manifold connection . . . multiplies capabilities.



VIAL-STOPPERING

Automatically seals under vacuum. Also permits stoppering of dried materials with inert gases.

Now, for the first time, chamber and manifold drying capabilities are incorporated into *one* instrument. No special glassware is needed; ordinary containers are converted into vacuum chambers. Unique Vacu-Plate obsoletes heavy-wall chambers, revolutionizes freeze-drying technique, ends threat of implosion. Gives implosion-proof safety and assured performance to floor and bench models. Get the details about this superior method of freeze-drying.

5 MODELS plus Sheller-Freezer

Write for Bulletin 309

*Pats. Pending



MECHANISMS OF HARD TISSUE DESTRUCTION

Edited by Reidar F. Sognaes. 764 pp., 430 ill., 1963. \$13; \$11 prepaid to AAAS members.

"Scientists in the fields of dentistry, medicine and zoology presented a multidisciplinary symposium in 1962, dealing with varied but cognate topics such as coral reefs, dental caries, deer antlers, osteoclastic diseases, bone metabolism, chelation. It is a refreshingly well-planned, well-edited, and interesting symposium. (*Journal of the American Medical Association*, July 1964

Order from:

AAAS

1515 Massachusetts Ave., NW
Washington, D.C. 20005



typit
Now over 1,000 more symbols available!

FREE!
New Catalog

More than 1,000 Typit symbols
the perfect, inexpensive way to
TYPE ANY SYMBOL
perfectly in 4 seconds

Send for more information today

typit® manufactured by
mechanical enterprises, Inc.
3127 Colvin St., Alexandria, Va., Dept. SJ
☐ Please send free catalog.
☐ Give me a demonstration soon
at no obligation.

Name _____ Title _____
Company _____
Address _____
City _____ State _____

INDEX TO ADVERTISERS

21 January 1966

Ace Glass Inc.	369
Adage Inc.	266
American Edelstaal, Inc.	365
Ansitron, Inc.	381
Atomic Energy of Canada Limited	267
Baird-Atomic	280, 281
Bausch & Lomb	243, 379
Beckman Instruments, Inc.	238, 253, 278
Brinkmann Instruments	383
BRS Electronics	362
Buchler Instruments, Inc.	362
Chemical Control Systems	382
Chemical Rubber Co.	370
Clay-Adams	261
Coleman Instruments Corp.	268
Corning Glass Works	262, 263
Custom Scientific Instruments, Inc.	364
Denominator Co., Inc.	377
Disposable Laboratory Cages, Inc.	375
Du Pont, E. I. de Nemours & Co.	255
E-C Apparatus Corp.	364
Electric Storage Battery Co., Wisco Div.	377
E & M Instrument Co., Inc.	365
F & M Scientific	251
Friden, Inc., Div. of Singer	367
Gilford Instrument Laboratories Inc.	244
Graphic Controls Corp.	249
Hacker, William J., & Co., Inc.	361
Hewlett-Packard, Loveland Div.	279
Hewlett-Packard, Sanborn Div.	246
High Voltage Engineering Corp.	282
Honeywell, Denver Div.	265
Honeywell, Philadelphia Div.	274
Houghton Mifflin	384
Instrumentation Specialties Co., Inc.	375
International Equipment Co.	248
Jarrell-Ash Co.	252
Klett Manufacturing Co., Inc.	384
Lab-Line Instruments, Inc.	385
Linde Div., Union Carbide Corp.	269
LKB Instruments, Inc.	264
London Co.	260
Lourdes	360
Maryland Plastics, Inc.	368
Matthews Research, Inc.	376
McDonnell	389
Mechanical Enterprises, Inc.	386
Mettler Instrument Corp.	387
Millipore Filter Corp.	364
Nalge Co., Inc.	386
New Brunswick Scientific Co., Inc.	275
New England Nuclear Corp.	384
Nuclear-Chicago	247, 390
Nutritional Biochemicals Corp.	239
Packard Instrument Co., Inc.	284
Perkin-Elmer Corp.	271
Pharmacia Fine Chemicals Inc.	373
Phipps & Bird, Inc.	381
Phoenix Precision Instrument Co.	360
Photovolt Corp.	259
Professional Tape Co., Inc.	382
Radiation Instrument Development Laboratory	254
Radiochemical Centre	377
Savant Instruments, Inc.	366
Sherer-Gillett Co.	368
Sigmamotor, Inc.	384
Sorensen, a unit of Raytheon Co.	276
Thomas, Charles C., Publisher	270
Tracerlab	256
Troemner, Henry, Inc.	360
U.S. Stoneware	366
Varian Associates, Recorder Div.	383
Varian Vacuum Div., Mikros Plant	374
Vickers Instruments, Inc.	378
Waring Products Co.	242
Wild Heerbrugg Instruments, Inc.	363
Williams & Wilkins Co.	370
Wilmot Castle Co.	245
Worthington Biochemical Corp.	380
Zeiss, Carl, Inc.	272, 273

ANOTHER NEW PRODUCT
OF NALGE RESEARCH

**THIS NALGENE®
CENTRIFUGE TUBE
WITHSTANDS
100,000 x G...**



**AND HAS THE
CLARITY OF GLASS!**

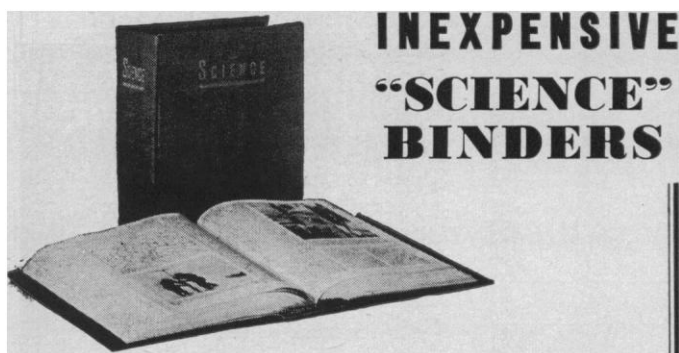
■ A new polycarbonate centrifuge tube from Nalge is unexcelled for high speed centrifuging. Originally designed for virus vaccine studies, the tube is virtually shatterproof. Available in two mouth openings— $\frac{1}{4}$ " and $\frac{1}{2}$ ". The $\frac{1}{4}$ " opening has a lip to prevent accidental spillage. The price? Far below anything in its class.

■ Nalge offers the most extensive line of plastic centrifuge ware. Round or conical tubes, with or without closures. Bottles—with flat or spherical bottoms. Plus a variety of resins—all non-contaminating, corrosion-resistant and unbreakable.

■ Polycarbonate tubes—window clear . . . autoclavable . . . use in high speed refrigerated centrifuges. Polypropylene tubes—autoclavable . . . extremely high chemical resistance . . . priced to use as disposables. Polyethylene tubes—economical . . . high chemical resistance . . . low temperature applications.

■ Nalgene Centrifuge Ware is always in stock—ready for immediate delivery. As-sortable with other Nalgene Labware for maximum discount. Read the whole story in our new brochure N-44. Ask your lab supply dealer, or write Dept. 2125, The Nalge Co., Inc., 75 Panorama Creek Drive, Rochester, New York 14625.

**NALGENE
LABWARE**
Leader in quality plastic labware since 1949



INEXPENSIVE "SCIENCE" BINDERS

Keep your copies of **SCIENCE** always available for quick, easy reference in this attractive, practical binder. Simply snap the magazine in or out in a few seconds—no punching or mutilating. It opens **FLAT**—for easy reference and readability. Sturdily constructed, this maroon buckram binder stamped in gold leaf will make a fine addition to your library.

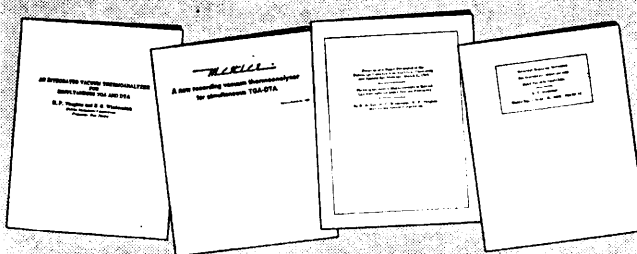
SCIENCE Binders hold one three-month volume of **SCIENCE**. They have a 3¼-inch back and 13 flat fasteners. \$3.25 each. Four binders, \$12.00.

For six-month volumes, through December 1961, **SCIENCE** binders with 4-inch back and 26 flat fasteners are available. \$3.25 each.

Add 50¢ for orders outside the U.S. Name of owner, 75¢ extra; year of issues, 50¢ extra.

SCIENCE • 1515 Massachusetts Ave., NW,
Washington, D.C. 20005

ASK FOR TECHNICAL REPORTS ON Simultaneous TGA/DTA



1. Universal Measuring Instrument for Gravimetric Investigations Under Variable Conditions, H. G. Wiedemann, Chem. Ing. Techn. 36. Jahrg. 1964/Nr. 11.
2. A New Recording Vacuum Thermoanalyzer for Simultaneous TGA/DTA. Technical Bulletin No. T101, Mettler Instrument Corporation.
3. Thermogravimetric Measurements in Special Gas Atmospheres Under Various Pressures, H. Jucker, H. G. Wiedemann and H. P. Vaughan, Presented at Pittsburgh Conference on Analytical Chemistry and Applied Spectroscopy, March 2, 1965.
4. An Integrated Vacuum Thermoanalyzer for Simultaneous TGA/DTA, H. P. Vaughan and H. G. Wiedemann, Vacuum Microbalance Techniques, Volume IV, Plenum Press.

METTLER®

Mettler Instrument Corp., 20 Nassau St., Princeton, N. J.

PERSONNEL PLACEMENT

POSITIONS WANTED

(a) **Bacteriology Ph.D.**; serology minor; extensive clinical, public health, teaching experience; available for medical assignment. (b) **Zoology Ph.D.**; physiology minor; space biology, protozoology, cancer research experience; seeks research or teaching appointment. Write Woodward Medical Personnel Bureau, 185 North Wabash, Chicago 60601. X

Biochemist, Ph.D. 1965. Broad teaching experience, research in lipid and amino acid metabolism, radioimmunoassay, 6 months as head of endocrine laboratory; interested in clinical chemistry area with opportunity for teaching and research. **Box 342, SCIENCE.** X

Biologist, Ph.D., university teaching, research experience, publications; seeks teaching, research. **Box 347, SCIENCE.** 1/28

Clinical Chemist, M.S., experienced in supervising large hospital labs, teaching, developing new procedures, familiar with the newest instrumentation, seeks position in New York or vicinity. **Box 350, SCIENCE.** 1/28

Embryologist, Ph.D., academic position in zoology or anatomy. **Box 331, SCIENCE.** X

General Physiologist, Ph.D. seeks teaching-research position. **Box 312, SCIENCE.** 1/28

Geology. Desire permanent opportunity teaching geology and related courses. Three years of college teaching, consulting; 4 years geologist Department of Interior; 2 years state survey. **M.S. Box 337, SCIENCE.** X

Microbiologist with chemistry minor, **Ph.D.** University of Illinois, 1963, **B.S.** in mathematics, desires teaching position, preferably on the West Coast. **Box 341, SCIENCE.** X

POSITIONS WANTED

Microbiologist-Biochemist, Ph.D., 1955; academic industrial experience; wide background, biochemical aspects pathogenicity, general, medical, analytical, fermentation microbiology, microbial physiology. Desires academic research/teaching. **Box 332, SCIENCE.** X

Pharmacologist, Physiologist, Ph.D. in June 1966; **M.S.** industrial pharmacy. Desire research/teaching, industrial, or government position. **Box 335, SCIENCE.** X

Ph.D. Endocrinologist-Biochemist-Histologist seeks appointment. **Box 348, SCIENCE.** X

Ph.D. Zoologist with 7 years' experience in teaching vertebrate embryology, morphology, and endocrinology desires academic teaching-research position. **Box 349, SCIENCE.** X

Physical-Chemist (Ph.D.). Available after completion of NIH special fellowship for work in physical chemistry of biological systems. Responsible position emphasizing research and teaching. **Box 346, SCIENCE.** X

Physiologist-Zoologist, Ph.D. Endocrine; vertebrate; general physiology; radiobiology; university-college teaching and research; academic. **Box 340, SCIENCE.** X

Physiologist, nerve-muscle. Associate professor, 10 years of academic experience. Desires teaching/research position, minimum administrative load. **Box 343, SCIENCE.** 1/28

Radiobiologist-Pharmacologist, Ph.D., institute, industrial experience, publications, desires management position in industry, university, institute or foundation. **Box 344, SCIENCE.** X

POSITIONS WANTED

Three Ph.D.'s with training in following areas available academic or research: cell biology, microbial physiology and genetics, animal virology, nucleic acids, protein synthesis. **Box 339, SCIENCE.** 1/21

Veterinarian (29) desires research and/or teaching position with or without animal care duties. Research, teaching, clinical experience. **Box 345, SCIENCE.** 2/11, 3/11

POSITIONS OPEN

Clinical Chemist to head department in large laboratory. Academic appointment. **B.S.** degree with at least 4 years' experience. Salary range \$10,000 to \$12,500.

Herbert Derman, M.D., Director
City of Kingston Laboratory
Kingston, New York

Medical-Chemical Literature Analyst

Advanced degree in medical or biological or chemical sciences required. Familiarity with cancer literature and especially carcinogenesis preferred. Experience with information handling techniques desirable. Must have ability to write good reports and facility to present complex data clearly to non-technical personnel. Permanent position in southeastern location. Salary open, depending on qualifications. Please send complete curriculum to **Box 1, SCIENCE.**

POSITIONS OPEN

Biologists—Two Ph.D.'s with competence in experimental embryology, histology, histochemistry, botany, anatomy (for nurses), and ecology. Research opportunity and graduate teaching. Also M.S. to teach terminal biology course. Write and include resume to: **Chairman, Department of Biology, Villanova University, Villanova, Penna.**

BIOCHEMIST

Associate Professor sought to conduct graduate research program and give introductory course in biochemistry. Ph.D. and current active research required, teaching experience preferred. Apply: **Chairman, Biology Department, Clark University, Worcester, Massachusetts 01610.**

(a) **Biologist**, environmental health program; East; to \$15,000. (b) **Clinical Microbiologist**; West Coast laboratory; \$16,000; (c) **Laboratory Supervisor**, Ph.D., Central; to \$22,000. (d) **Ph.D. Psychologist**, \$15,000, direct department, near Salt Lake City. *Faculty Appointments:* (e) **Ph.D. Zoology**, experimental embryology; Midwest. (f) **Ph.D. Physiology**, California; to \$9400. (g) **Ph.D. Plant Physiology**, Southeast. Many others available. Write **SCIENCE SERVICE, The Medical Bureau, 900 North Michigan Avenue, Chicago, Illinois 60611.** X

TRAINING AND RESEARCH PROGRAM IN BIOMEDICAL ENGINEERING

leading to M.S. in Biomedical Engineering. Two year program open to life scientists (M.D., D.V.M., D.D.S., Ph.D., etc.) and physical scientists and engineers. Course work in mathematics, physics, engineering sciences, and basic biological and medical sciences, culminating in study of biological control systems, biophysical chemistry, physics of living systems, etc. Curriculum specifically designed to overcome deficiencies of various backgrounds. Address inquiries to: **Director, Biomedical Engineering Program, Drexel Institute of Technology, 32nd and Chestnut Streets, Philadelphia, Pennsylvania 19104.**

"Post-doctoral traineeship in research pathology or biomedical sciences sponsored by NIH. Excellent laboratory facilities and research supervision. Remuneration according to previous training up to \$8000 per annum. Apply **Dr. Henry P. Schwarz, Philadelphia General Hospital, 34th Street and Curie Avenue, Philadelphia, Pa.**

RESEARCH TECHNICIAN

Position available for college graduate with major in Biochemistry or related field to assist in Biochemistry and Immunochemistry research. Progressive hospital affiliated with Northwestern University. Excellent salary commensurate with experience and training.

Box 323, SCIENCE

WEST VIRGINIA UNIVERSITY Department of Biology

Applications are invited from persons suitably qualified for appointments at either the Assistant or Associate Professor level. Persons in the following disciplines: experimental plant anatomy, ecology, developmental biology, cellular, and reproductive physiology should submit curriculum vitae and list of publications to **Dr. Earl L. Core, Chairman.**

POSITIONS OPEN

TRENT UNIVERSITY, Peterborough, Ontario ORGANIC CHEMIST

Applications are invited for an academic appointment in Organic Chemistry from July 1, 1966. Duties will be to participate in undergraduate teaching, conduct research, and assist in planning the programme at advanced levels. A Ph.D. or appropriate teaching and research experience is required, with specialization in reaction mechanisms or natural products preferred. Salary dependent on qualifications. Base salaries: Lecturer—\$6,000; Assistant Professor—\$8,000; Associate Professor—\$10,000; Professor—\$13,000. Applications, with complete curriculum vitae and names of three or four referees should be sent to **T. H. B. Symons, President and Vice-Chancellor, Trent University, Peterborough, Ontario, Canada.**

FELLOWSHIPS

Postdoctoral Trainee Fellowships in Electrophysiology

Applications are invited from U. S. citizens for N.I.H. Postdoctoral Trainee Fellowships in Neurophysiology available at the College of Physicians & Surgeons, Columbia University, under an N.I.H. Training Grant. Applicants (M.D. or Ph.D.) should have a grounding in mathematics and basic sciences, but prior experience in physiology is not required. Ample opportunities are available for research training in various aspects of electrophysiology, supervised by: **M. V. L. Bennett, L. Girardier, H. Grundfest, W. R. Loewenstein, D. P. Purpura and J. P. Reuben.** For information write to: **Professor Harry Grundfest, Laboratory of Neurophysiology, Department of Neurology, 630 West 168th Street, New York, New York 10032.**

FELLOWSHIPS—Postdoctoral fellowships available to individuals (Ph.D.; M.D. or equivalent) seeking research training in general field of metabolism including diabetes, endocrinology, renal function, steroid biochemistry. Stipends \$5000 to \$6500, partly tax-exempt, and allowance for dependents. Apply to **Dr. R. E. Bailey, University of Oregon Medical School, Portland, Oregon.**

FELLOWSHIPS

Predoctoral and Postdoctoral Fellowships in Medical Physics

Opportunities are available to do graduate work in the basic medical sciences including, radiation biology, radiation physics, bioastronautics, and the clinical use of radioisotopes. Fellowship support is offered for study programs leading to the M.S. and Ph.D. degrees in medical physics and also for postdoctoral research. Stipends vary with training and dependents.

Write to **Chairman, Department of Radiology, Center for the Health Sciences, University of California, Los Angeles, California 90024.**

Postdoctoral Fellow in Pathology M.D. or Ph.D.

Cancer Research in the general field of cell division and factors controlling initiation of DNA biosynthesis. Salary \$7000.

Box 2, SCIENCE

FELLOWSHIPS

DALHOUSIE UNIVERSITY HALIFAX CANADA

Applications are invited for:

Dalhousie Postdoctoral Fellowships in the Sciences

with annual stipends of
\$6,000.
for research associateships
\$7,000.

Dalhousie Visiting Fellowships for Terminating Graduate Students and New Ph.D.'s PRE-DOCTORAL

\$3,500.
for single fellows
\$4,000.

for married fellows

POSTDOCTORAL

\$4,500.

for single fellows

\$5,000.

for married fellows

Dalhousie Graduate Fellowships

to a maximum value of
\$4,000.

for students proceeding to a Ph.D. Degree
in

The Physical Sciences,

The Biological Sciences,

The Medical Sciences,

Psychology and Oceanography.

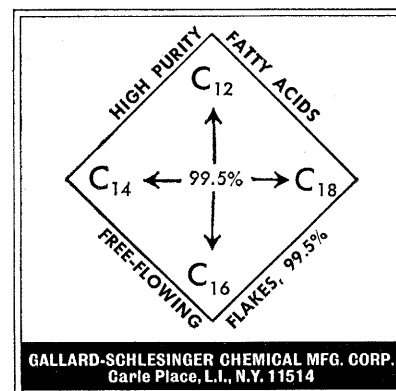
Inquiries

Should be addressed to:
**The Dean, Faculty of Graduate Studies,
Dalhousie University
Halifax, Nova Scotia, Canada**

The Market Place

BOOKS • SERVICES • SUPPLIES • EQUIPMENT

SUPPLIES AND EQUIPMENT



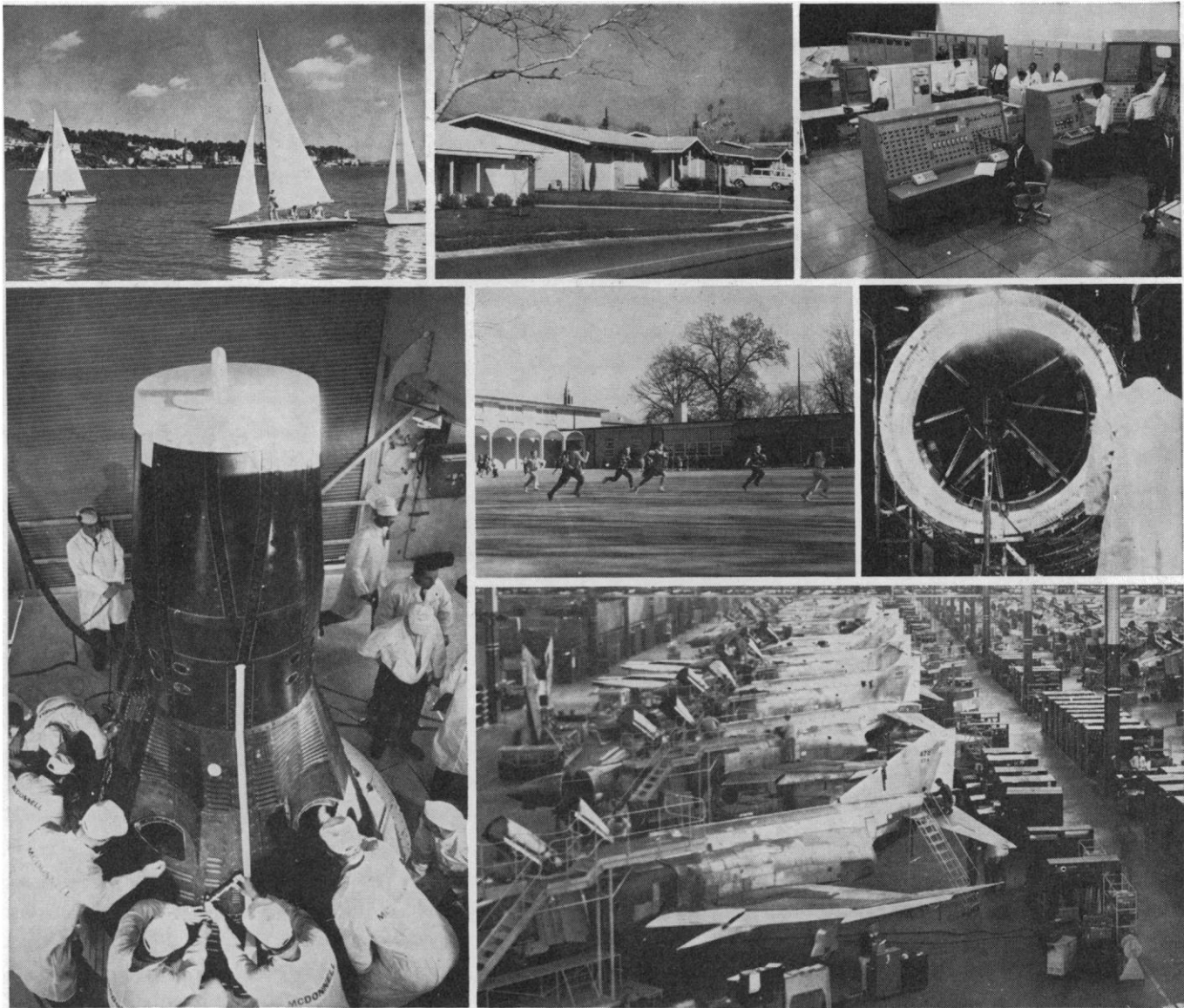
SPRAGUE-DAWLEY, INC.

Pioneers in the development of the
STANDARD LABORATORY RAT.

P.O. Box 4220

Madison, Wisconsin

CE 3-5318



MEET "MAC" If you think growing room is at a premium, look to McDonnell where there's no ceiling on professional growth. McDonnell's many more active programs in-house—in *spacecraft, aircraft, missiles, electronics, precise time reference systems, and automation* have kicked the lid off. ■ The McDonnell Team enjoys group insurance (McDonnell pays 90%); retirement income (McDonnell pays $\frac{2}{3}$); patent compensation; 9 paid holidays; educational assistance (up to full sponsorship and reduced work weeks); professional recognition; beautiful communities and natural vacationlands. ■ To arrange an interview appointment in your area of interest, please send your résumé with the completed coupon. *We will answer every inquiry.*

MCDONNELL

A Plans for Progress Company and
An Equal Opportunity Employer

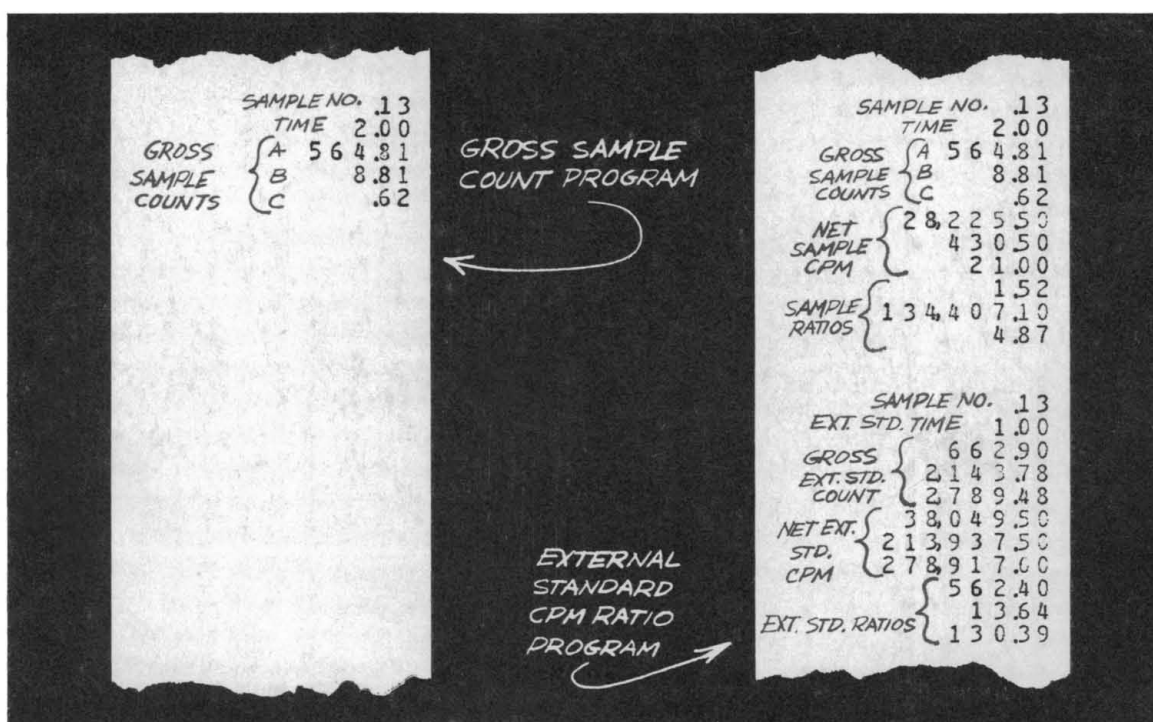
Long-term positions are immediately available for the following specializations:

- Aircraft Structural Design Engineers
- Electronic Systems Engineers
- Structural Test Engineers
- Propulsion, Aerodynamics Engineers
- Operations Analysis Engineers
- Guidance & Control Mechanics Engineers
- Thermodynamics Engineers
- Industrial Engineers
- Stress Analysts

- Loads, Weights Engineers
- Plant Design Engineers
- Facilities Engineers
- Specifications Engineers
- Engineering Psychologists
- Flight Test Engineers
- Aerospace Ground Equipment Designers
- Chemical Engineers
- Systems Analysts
- Scientific Programmers
- Electronic Equipment Engineers

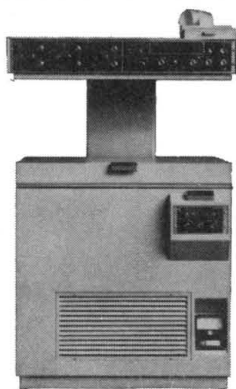
MCDONNELL, P.O. Box 516, St. Louis, Missouri 63166
Att: W. R. Wardle, Engineering Employment Office, Dept.
ZZ-121

Name _____
Home Address _____
City & State _____
Phone _____
Present Position _____
Degree _____



You can learn this little or this much about your sample.

Only the Mark I Liquid Scintillation Computer lets you do it...with true electronic calculation.



Model 6860 (Ba¹³³ external standard)
Model 6863 (Ra²²⁶ external standard)

True electronic calculation means that you can record a little or a lot of data about your liquid scintillation sample. And only the Mark I™ lets you. Its scaler-computer electronically performs addition, subtraction, and division, as well as timing and three-channel scaling.

Choose from these selectable sequences and combinations to find out what you want to know about your sample:

- Gross sample count, *above left*.
- Gross sample count plus external standard count.
- Gross sample cpm.
- Net sample cpm.
- Net sample cpm ratios (any three ratios or reciprocals, simultaneously).
- Net external standard cpm.
- External standard cpm ratios (any three ratios or reciprocals, simultaneously), *above right*.

The Mark I's all-electronic computer uses integrated micro-circuits for reliability, speed, and accuracy. And all it takes for data readout is a simple lister with few moving parts.

If you'd rather have any of these sequences presented on an electric typewriter or a Teletypewriter, you can with the Mark I. Or use the built-in data conversion logic to provide digital outputs for producing punched tape or cards in computer-compatible formats.

Shouldn't you be getting as much data from your sample as you need? In the form you want? Your Nuclear-Chicago sales engineer can show you how the Mark I can help you to do just that. Call him. Or write directly to us.

NUC 8-5-993



NUCLEAR-CHICAGO CORPORATION

349 East Howard Avenue, Des Plaines, Illinois 60018, U.S.A. / Donker Curtiusstraat 7, Amsterdam W, The Netherlands.