

messenger RNA on the DNA template also occurs from the 5'- to the 3'-end, and discussed possible mechanisms by which translation and transcription interact at the DNA site.

T. Yura discussed the present status of experiments in his laboratory in which the synthesis of the enzyme tryptophan synthetase by cell-free extract is stimulated by DNA carrying the corresponding genes and is subject to specific regulatory effects, thus suggesting that the in vitro system reproduces faithfully the machinery presumed to be operative in vivo.

A. Garen (Yale University) presented a series of experiments on the effect of suppressor mutations on the translation of the genetic message for the enzyme alkaline phosphatase. These studies, as well as parallel ones in other laboratories, have made it possible to identify the nature of at least one "nonsense" codon in *E. coli* RNA as A.U.G. and to identify the nature of the amino acid replacements caused by various suppressors. Garen and Zinder also reported current experiments which attempt to make use of genetic suppressors to induce specific changes in protein synthesized in cell extracts and

to identify the mode of action of the suppressors, whether on the sRNA, the activating enzymes, or the ribosomes.

One significant conclusion to be derived from the valuable exchange of information that took place at the symposium is the close similarity of goals and methodology employed by scientists in the two countries, a similarity not surprising in view of the fact that many of the Japanese workers in molecular genetics have received part of their training in American laboratories. At the same time, the emphasis is often different and the discussion, therefore, was more mutually informative than a similar discussion would have been among a group of American scientists. In part, this is due to the fact that the Japanese molecular geneticists are often in closer touch with medical research than their American counterparts, and also reflects the fact that the interest of many Japanese scientists has been concentrated on certain phenomena, such as the resistance transfer factors, which have been discovered in Japan.

S. E. LURIA

*Massachusetts Institute of Technology,  
Cambridge*

## Forthcoming Events

### October

7-8. **Fiber Soc.**, meeting, Wilmington, Del. (Fiber Soc., Box 625, Princeton, N.J.)

7-9. **Seismological Soc. of America**, eastern sec. 37th annual, Lamont Geological Observatory, Palisades, N.Y. (J. Dorman, Lamont Geological Observatory, Palisades 10964)

8-9. **Atlantic Coastal Plain Geological Assoc.**, field trip, South Carolina. (D. J. Colquhoun, Dept. of Geology, Univ. of South Carolina, Columbia)

8-9. **Indiana Acad. of Science**, fall meeting, Notre Dame. (C. F. Dineen, St. Mary's College, Notre Dame)

9. **Paleontological Research Inst.**, Ithaca, N.Y. (K. V. W. Palmer, Paleontological Research Inst., 109 Dearborn Pl., Ithaca)

9-10. **Gastroenterology**, French conf., Paris, France. (R. Biguie, 79, Boulevard Malesherbes, Paris 8<sup>e</sup>)

9-13. **American Soc. of Clinical Hypnosis**, Chicago, Ill. (F. D. Nowlin, ASCH, 800 Washington Ave., SE, Minneapolis, Minn. 55414)

9-17. **Electrical, Electronics, and Mechanical Engineering**, first Pan American congr., Mexico, D.F. (Inst. of Electrical and Electronics Engineers, Box A, Lenox Hill Station, New York 10021)

10-14. **Water Pollution Control Fed.**, 38th annual, Atlantic City, N.J. (R. E. Fuhrman, 4435 Wisconsin Ave., NW, Washington, D.C. 20016)

10-15. **International Federation for Documentation**, congr., Washington, D.C. (Secretariat, FID, 9650 Wisconsin Ave., Washington 20014)

10-15. **Electrochemical Soc.**, meeting, Buffalo, N.Y. (Executive Secretary, ES, 30 E. 42 St., New York 10017)

10-15. **Endocrinology**, 6th Pan American conf., Mexico, D.F. (G. Gual, Inst. Nacional de la Nutrición, Dr. Jimenez No. 261, Mexico 7)

10-16. **American Documentation Inst.**, Washington, D.C. (J. E. Bryan, 2000 P St., NW, Washington, D.C. 20036)

10-17. **Bronchoesophagology**, 1st Latin American congr., Rio de Janeiro, Brazil. (F. Aprigliano, Rua Alcindo Guanabara, 24, Sob-Loja 206, Rio de Janeiro)

10-17. **Otorhinolaryngology**, 14th Brazilian congr., Rio de Janeiro, Brazil. (W. Benevides, Rua Alcindo Guanabara, 24, Sob-Loja 206, Rio de Janeiro)

10-17. **Plastic Surgery**, 10th Latin American congr., Buenos Aires, Argentina. (J. Norberto Spera, Riglos 624, Buenos Aires)

11-13. **Color Centers in Alkali Halides**, symp., Univ. of Illinois, Urbana. (D. W. Compton, Dept. of Physics, Univ. of Illinois, Urbana)

11-13. **Communications**, 11th natl. symp., Utica, N.Y. [G. E. Brunette, Communications Div. (EMCT) Rome Air Development Center, Griffiss AFB, New York 13442]

11-13. **Metabolic Roles of Lipids**, symp., Cincinnati, Ohio. (C. H. Hauber, American Oil Chemists' Soc., 35 East Wacker Dr., Chicago 1, Ill.)

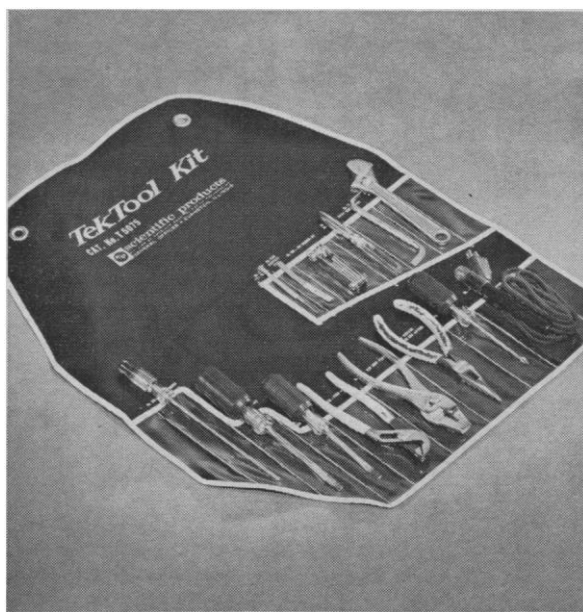
11-13. **Manned Spaceflight**, 4th meeting, St. Louis, Mo. (J. F. Yardley, McDon-

When  
little  
things  
mean  
a lot



scientific  
products

GENERAL OFFICES:  
1210 LEON PLACE  
EVANSTON, ILLINOIS



Because they mean a lot to you, they mean a lot to us. That's why S/P maintains 16 distribution centers, offers more than 30,000 items. For example—new S/P TekTool Kits for simple instrument adjustment. These routinely used tools, selected after consultation with S/P instrument service specialists, meet the need for on-the-spot maintenance and adjustments as described in instrument manuals. They can mean a lot in your laboratory.

No. T5075X—S/P TekTool Kit. Set. . . . . \$29.50

Order today—satisfaction guaranteed

nell Aircraft Corp., P.O. Box 516, St. Louis)

11-13. **National Acad. of Sciences**, fall meeting, Univ. of Washington, Seattle. (H. Neurath, Dept. of Biochemistry, Univ. of Washington, Seattle 98105)

11-13. **American Record Management Assoc.**, 10th annual conf., Minneapolis, Minn. (L. Loveless, Office Services, Honeywell, Inc., 2701 Fourth Ave., S, Minneapolis 55408)

11-14. **Association of Official Agricultural Chemists**, 79th annual, Washington, D.C. (L. G. Ensminger, AOAC, Box 540, Benjamin Franklin Station, Washington 20044)

11-14. **American Oil Chemists' Soc.**, fall meeting, Cincinnati, Ohio. (AOCS, 35 E. Wacker Dr., Chicago, Ill. 60600)

11-15. **Fall Metallurgy Days**, Paris, France. (Soc. Française de Metallurgie, 25 rue de Clichy, Paris 9°)

11-16. **Stomatology**, 19th French congr., Paris. (R. Cayron, 99, rue de Courcelles, Paris 17°)

11-23. **International Organization for Standardization**, Milan, Italy. (Soc. of Motion Picture and Television Engineers, 9 E. 41 St., New York 10017)

12-13. **Cardio-Renal Consequences of Sustained Hypertension**, seminar, Philadelphia, Pa. (Miss S. Rosen, Symposium Office, Hahnemann Medical College and Hospital, 230 N. Broad St., Philadelphia 19102)

12-14. **Analytical Chemistry in Nuclear Technology**, 9th conf., Gatlinburg, Tenn. (C. D. Susano, Oak Ridge Natl. Laboratory, P.O. Box X, Oak Ridge, Tenn.)

12-16. **Communications**, 13th intern. congr., Genoa, Italy. (Inst. for Intern. Communications, Viale Brigate Partigiane, 18, Genoa)

13. **Medical Physics**, seminar, New York, N.Y. (American Inst. of Physics, 335 E. 45 St., New York 10017)

13. **Animal Nutrition Research Council**, 26th annual, Washington, D.C. (J. C. Fritz, 12314 Madeley Lane, Bowie, Md. 20715)

13-15. **Detonation**, 4th symp., White Oak, Silver Spring, Md. (S. J. Jacobs, U.S. Naval Ordnance Laboratory, White Oak, Silver Spring 20910)

13-15. **American Assoc. of Petroleum Geologists**, mid-continent regional meeting, Tulsa, Okla. (E. W. Ellsworth, AAPG, Box 979, Tulsa 74101)

13-16. **Tau Beta Pi Assoc., Inc.**, Univ. of Maryland, College Park. (R. H. Nagel, 508 Dougherty Engineering Bldg., Univ. of Tennessee, Knoxville)

13-17. **Soil Biology**, first Latin American colloquium, Bahia Blanca, Argentina. (Organizing Committee, Inst. de Edafologia e Hidrologia, Alem 925, Bahia Blanca, Argentina)

13-19. **Instrumentation and Automation**, 3rd intern. congr., Düsseldorf, Germany. (Nordwestdeutsche Ausstellungs- und Messe-Gesellschaft, Ehrenhof 4, 4000 Düsseldorf 10)

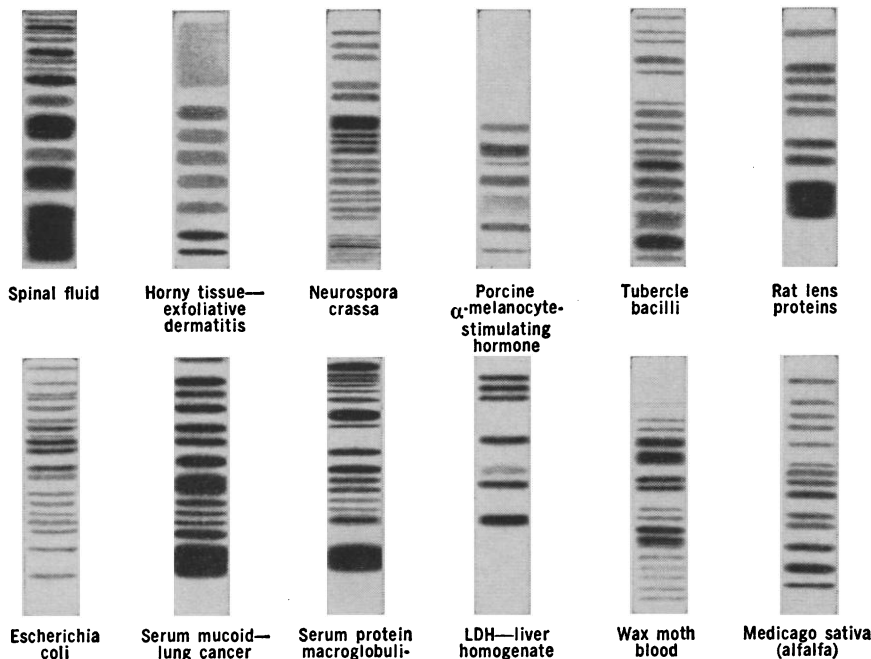
14. **Association of Vitamin Chemists**, Chicago, Ill. (D. Olson, Dawe's Laboratories, 4800 S. Richmond St., Chicago)

14-15. **International Federation of Surgical Colleges**, 8th annual, Philadelphia, Pa.; 17, Atlantic City, N.J. (K. Cassels, Royal College of Surgeons, Lincoln's Inn Fields, London, W.C.2, England)

Where the finest separation, analysis and purity evaluation of protein systems is being carried out...

# DISC ELECTROPHORESIS

is in the act.



Copyright 1965 Canal Industrial Corp.

Now in use in more than 2000 laboratories, Disc Electrophoresis offers unequalled sensitivity (to 0.01 microgram), speed (separation in 10-30 minutes), simplicity and reproducibility. Disc Electrophoresis is applicable to almost every area of protein research and clinical investigation, improving over separations by other methods and giving new separations never before possible by any technique.

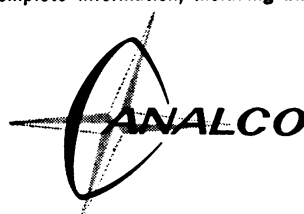
In Disc Electrophoresis, migration of sample substances through specially prepared columns of polyacrylamide gel produces exceptionally sharp bands of isolated fractions, "stacked" in disc-like zones as little as tens of microns thick. A random sample of the recent literature reporting uses of Disc Electrophoresis includes:

**SOURCES:** Amoebae, E. coli, flu virus, micobacteria, neurospora, polio virus, ribosomes, slime mould, staphylococci, tubercle bacilli; algae, cats, cattle, dogs, earthworms, fish, guinea pigs, hamsters, horses, humans, insects, lobsters, mice, pigs, plants, quail, rabbits, rats, sea urchins, sheep, snails, squid; tissue extracts of aorta, brain, horny tissue, kidney, lens, muscle, pancreas, parotid, pituitary, skin, thymus, thyroid; fluids such as axoplasm, blood, cerebrospinal fluid, milk, pancreatic juice, saliva, sperm, umbilical cord serum, urine and uterine fluid.

**SUBSTANCES SEPARATED:** Proteins, including C-reactive proteins, glycoproteins, mucoproteins, nucleic acids, nucleo-proteins and thyroxin-binding proteins; hemoglobins and haptoglobins; globulins, histones, human and bovine growth hormones, ovine follicle stimulating hormone, human chorionic gonadotropin, enterotoxins, Hageman factor, α-crystallin, collagen, diglyceride and prolactin; amylase, aminopeptidase, phosphatases; β-galactosidase, carbonic anhydrase, carboxypeptidase, dehydrolipamide dehydrogenase, glycogen phosphorylase, lipase, lactic and malic dehydrogenase, Phosphorylase, ribonuclease, sialidase, transaminase and transpeptidase.

**DIAGNOSIS OF:** Acute schizophrenia, cancer of the breast and lung, glomerulonephritis, liver pathology, lupus erythematosus, macroglobulinemia, milk allergy, myeloma, myocardial infarction, nephrosis, normal and abnormal pregnancy, pneumonia, primary tumor sites, rheumatic fever, sickle cell anemia, thalassemia, tuberculosis and uremic-hemolytic syndrome.

See how you can apply the benefits of Disc Electrophoresis to your own research. Send now for complete information, including bibliography, without cost or obligation. Write



**CANAL INDUSTRIAL CORPORATION**  
Dept. E-101 4935 Cordell Avenue  
Bethesda, Maryland / (301) 656-2333

Sales and Service Offices in • Boston • Houston • New York • Seattle  
• Chicago • Los Angeles • Pittsburgh • Washington, D. C. • Cincinnati  
• Memphis • St. Louis • Toronto • Cleveland • Minneapolis • San Francisco