

## Election of AAAS Officers

The following nominees for AAAS offices were selected by the AAAS Committee on Nominations and Elections at a meeting on 11 June. All have agreed to serve if elected.

*President-elect* (one to be elected)

John W. Gardner  
Laurence M. Gould

*Members of the Board of Directors*  
(two to be elected)

Allan D. Bass  
H. Bentley Glass  
Margaret Mead  
Walter Orr Roberts

*Members of the Committee on Council Affairs* (three to be elected)

Theodore C. Byerly  
Charles B. Hitchcock  
Elburt F. Osborn  
Martin Arthur Pomerantz  
Mathew Ross  
Kenneth C. Spengler

The names of additional nominees may be included on the ballot on petition signed by no fewer than 30 members of the Council and submitted to the Executive Officer no later than 1 November.

Election ballots will be mailed to Council members shortly after 1 November. Results of the election will be announced at the Council meeting on 27 December in Philadelphia.

Biographical information concerning the nominees follows.

**For President-elect**

**John W. Gardner**

John W. Gardner, 49 (psychology), instructor, Connecticut College, 1938–40; assistant professor, Mount Holyoke College, 1940–42; head, Latin-American Section, Foreign Broadcast Intelligence Service, Federal Communications Commission, 1942–43; staff member,

Carnegie Corporation of New York, 1946–47, executive associate, 1947–49, vice president, 1949–55, president, 1955–; acting president, Carnegie Foundation for Advancement of Teaching, 1954–55, president, 1955–; chairman, Committee on Public Relations, American Psychological Association, 1949–51; trustee, New York School of Social Work, 1949–55; member, Policy Planning Board, American Psychological Association, 1951–52; chairman, Social Sciences Panel, Scientific Advisory Board, U.S. Air Force, 1951–55; member, Finance Committee, American Psychological Association, 1953–56; trustee, Educational Testing Service, 1955–; trustee, System Development Corporation, 1957–; chairman, Panel on Education, Rockefeller Brothers Special Studies Project, 1958; member, Advisory Committee for Social Sciences, National Science Foundation, 1959–; member, President's Special Task Force on Education, 1960; chairman, U.S. Advisory Commission on International Educational and Cultural Affairs, 1962–; received U.S. Air Force Exceptional Services Award, 1956, Distinguished

Service Award to Higher Education, 1959.

AAAS activities: member, Honorary Reception Committee, 1956 and 1960 annual meetings.

**Laurence M. Gould**

Laurence M. Gould, 66 (geology), instructor, University of Michigan, 1921–26, assistant professor, 1926–30, associate professor, 1930–31; professor, Carleton College, 1932–45, president, 1945–; assistant director and geologist, University of Michigan Greenland Expedition, 1926; assistant director and geographer, Putnam Baffin Island Expedition, 1927; second in command and geologist-geographer, Byrd Antarctic Expedition, 1928–30; president, Minneapolis Academy of Science, 1938–39; chairman, Board of Governors, Arctic Institute of North America, 1946; trustee, Carnegie Foundation for the Advancement of Teaching, 1953; member, National Science Board, National Science Foundation, 1953–; trustee, Ford Foundation, 1954–; director, U.S. Antarctica Program, International Geophysical Year, 1957–58; chairman, Committee on Polar Research, National Academy of Sciences, 1958–; senator-at-large and past president, United Chapters of Phi Beta Kappa, 1958–61; received David Livingstone Gold Medal of the American Geographical Society, 1930, Congressional Gold Medal, 1931, Cross of St. Olaf, 1949, Explorers Club Medal, 1957, Navy Distinguished Public Service Award, 1959.

AAAS activities: member, Committee on Public Understanding of Science, 1960–.



John W. Gardner



Laurence M. Gould

## For Board of Directors

The Board members whose terms expire at the end of 1962 are H. Bentley Glass and Margaret Mead. While the Committee on Nominations chose to place both names on the ballot, only one can be reelected. The Association's constitution stipulates that not more than one Fellow completing a full term as an elected member may be reelected.

### Allan D. Bass

Allan D. Bass, 52 (medical science, pharmacology), research assistant, Vanderbilt Medical School, 1937–39; intern in medicine, Vanderbilt Hospital, 1939–40; assistant resident, 1940–41; American College of Physicians fellow, Yale Medical School, 1941–42; instructor, Department of Pharmacology, 1942–43; instructor, Department of Medicine, Vanderbilt Medical School, 1943–44; U.S. Army Medical Corps, Philippine Islands, 1944–45; professor and chairman, Department of Pharmacology, State University of New York, Syracuse, 1945–52; professor and chairman, Department of Pharmacology, Vanderbilt Medical School, 1953–; chairman, Educational Affairs Committee, 1955–60; chairman, Pharmacology Test Committee, National Board of Medical Examiners, 1955–60; treasurer, American Society for Pharmacology and Experimental Therapeutics, 1958–60; member, Pharmacology and Experimental Therapeutics Study Section, National Institutes of Health, 1960–; and member, Advisory Panel for Study on Manpower Needs in the Basic Health Sciences, Federation of American Socie-

ties for Experimental Biology, 1961–.

AAAS activities: editor of two AAAS symposium volumes; secretary, Section on Medical Sciences, 1952–60; member, Council, 1952–60; secretary, Committee of Judges, Theobald Smith Award in the Medical Sciences, 1952–60; member, Committee on Council Activities and Organization, 1959–60; member, Committee on Council Affairs, 1961–63; committeeman-at-large, Section on Medical Sciences, 1962–65.

### H. Bentley Glass

H. Bentley Glass, 56 (genetics), teaching fellow in zoology, Baylor University, 1928–29; National Research Council fellow, University of Oslo, Kaiser-Wilhelm Institute, and University of Missouri, 1932–34; instructor in zoology, Stephens College, 1934–38; assistant professor of biology, Goucher College, 1938–41, associate professor, 1941–45, professor, 1945–47; associate professor of biology, Johns Hopkins University, 1947–52, professor, 1952–; consultant, U.S. Department of State, Germany, 1950–51; assistant editor, *Quarterly Review of Biology*, 1944–48, associate editor, 1949–58, editor, 1958–; biology editor, Houghton Mifflin Company, 1946–; secretary, American Society of Naturalists, 1950–52, member, Executive Committee, 1953; member, Governing Board, American Institute of Biological Sciences, 1951–53, president, 1954–56, chairman, Biological Sciences Curriculum Study, 1959–; director, American Society of Human Genetics, 1954–55; trustee, *Biological Abstracts*, 1954–60, president, 1958–60; member, Advisory Committee for Biology and Medicine, Atomic Energy

Commission, 1955–63; member, Committee on the Genetic Effects of Atomic Radiation, National Academy of Sciences, 1955–; member, Genetics Panel, National Science Foundation, 1956–; national lecturer, Sigma Xi, 1958–59; president, American Association of University Professors, 1958–60; director, Eugenics Society, 1958–; member, Continuing Committee, Pugwash Movement, 1958–; vice president, Genetics Society of America, 1960; senator, Phi Beta Kappa, 1961–67.

AAAS activities: member, Editorial Board, 1948–57; member, Council, 1952–57, 1959–; acting editor, *Science* and *The Scientific Monthly*, 1953; vice president and chairman, Section on the Zoological Sciences, 1956; member, Committee on Publications, 1959–60, chairman, 1961–62; member, Board of Directors, 1959–62; member, Committee on Cooperation among Scientists, 1960–62; member, Executive Committee, 1962.

### Margaret Mead

Margaret Mead, 61 (anthropology), assistant curator of ethnology, American Museum of Natural History, 1926–42, associate curator, 1942–; visiting lecturer, Vassar College, 1929–41; executive secretary, Committee on Food Habits, National Research Council, 1942–45; director, Wellesley School of Community Affairs, 1944; lecturer, Columbia University, 1947–51, director, research in contemporary cultures, 1948–50, guest professor, 1952–53, adjunct professor, 1954–; visiting professor, University of Cincinnati, 1957–; visiting professor, Menninger Foundation, 1959–; expeditions to Samoa, 1925–26, Manus tribe, Admiralty Islands, New Guinea, 1928–29 and 1953, Arapesh, Mundagumor, and Tehambuli tribes, New Guinea, 1931–33, Bali, 1936–38 and 1957–58, Iatmul, New Guinea, 1938; secretary, Institute for Intercultural Studies, 1949; president, Society for Applied Anthropology, 1949–50; president, World Federation for Mental Health, 1956–57; president, American Anthropological Association, 1960; received National Achievement Award, 1940, Woman Geographers Medal, 1942, Viking Medal of the Wenner-Gren Foundation, 1957–58.

AAAS activities: vice president and chairman of the Section on Anthropology, 1950; member, Board of Directors, 1955–62; member, Council, 1955–; chairman, Committee on Nomi-



Allan D. Bass



H. Bentley Glass

nations, 1957; member, Committee on Social Aspects of Science, 1957-58; member, Committee on Science in the Promotion of Human Welfare, 1959-62.

#### Walter Orr Roberts

Walter Orr Roberts, 47 (astronomy), researcher, Eastman Kodak Company, 1938-39; superintendent, Fremont Pass Station of Harvard College Observatory, 1940-46; director, High Altitude Observatory of Harvard University and University of Colorado, 1946-51; research associate, Harvard University, 1948-; director, High Altitude Observatory of the University of Colorado, 1951-; professor of astro-geophysics, University of Colorado, 1957-; director, University Corporation for Atmospheric Research, 1960-; chairman, Solar Technical Panel, U.S. National Committee for the International Geophysical Year, 1957-60; director, World Data Center A for Solar Activity, 1957-; member, Advisory Committee on Grants, Research Corporation, 1957-; chairman, Colorado Weather Control Commission, 1958-60; member, Editorial Advisory Board, *Journal of Planetary and Space Physics*, 1958-; chairman, Panel on Atmospheric Sciences, National Science Foundation, 1959-61; trustee, Mitre Corporation, 1960-; associate editor, *Journal of Geophysical Research*, 1960-.

AAAS activities: committeeman-at-large, Section on Astronomy, 1958-61; member, Committee on Science in the Promotion of Human Welfare, 1961; member, Council, 1962-.

#### For Committee on Council Affairs

Two of the six nominees for membership on the Committee on Council Affairs have previously served on that committee. At the end of 1962 Charles B. Hitchcock will have completed a 2-year term. Kenneth C. Spengler was a member in 1961. Three are to be elected for 3-year terms.

#### Theodore C. Byerly

Theodore C. Byerly, 60 (physiology), instructor in zoology, University of Michigan, 1926-28, Hunter College, 1928-29; physiologist, Division of Animal Husbandry, Bureau of Animal Industry, U.S. Department of Agriculture, 1929-37, chief, poultry husbandry investigations, 1941-47, chief, Division of Animal Husbandry, 1947-53, chief,



Margaret Mead. [Jacobi]



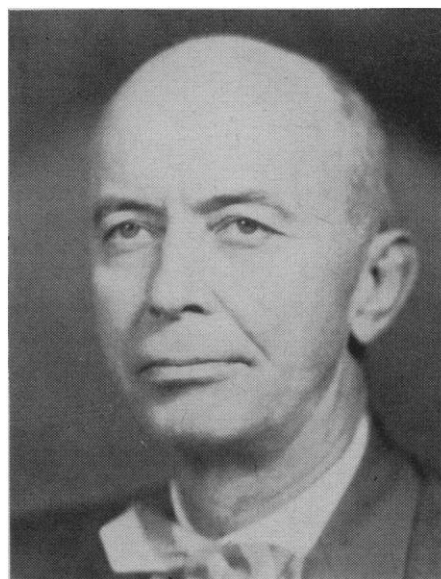
Walter Orr Roberts. [Snow]

Animal and Poultry Husbandry Research Branch, Agricultural Research Service, 1953-55, assistant director of livestock research, 1955-57, deputy administrator for farm research, 1958-62, administrator, Cooperative State Experiment Station Service, 1962-; professor of poultry husbandry, University of Maryland, 1937-41; chief, livestock rehabilitation program, United Nations Relief and Rehabilitation Administration, 1944-46; received Borden Award, 1943.

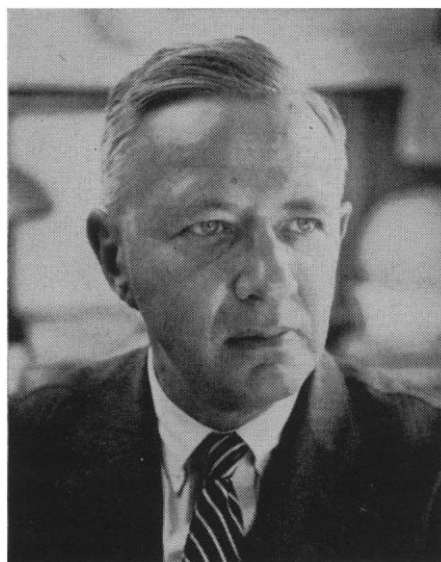
AAAS activities: member, Committee on the Social Aspects of Science, 1957-58; member, Council, 1957-; member, Committee on Science in the Promotion of Human Welfare, 1959-62.

#### Charles B. Hitchcock

Charles B. Hitchcock, 56 (geography), joined American Geographical Society staff, 1930, chief, Department of Hispanic American Research, 1938, assistant director, 1943-48, acting director, 1949, executive secretary, 1950-53, director, 1953-; American Museum of Natural History expeditions, Southern Venezuela, 1929; Phelps Venezuela expeditions, 1947, 1948, 1949, 1951, 1953, 1957, 1959; editor, "Map of Hispanic America," 1938-; chairman, U.S. Advisory Committee on American Cartography, 1945-56; treasurer, Association of American Geographers, 1948-49; member, Research and Development Board of the National Military Establishment, 1949; member, National Academy of Sciences-National Research Council Advisory Committee on Geography to the Department of State for the Pan American Institute of Geography and History, 1956-; member, Na-



Theodore C. Byerly



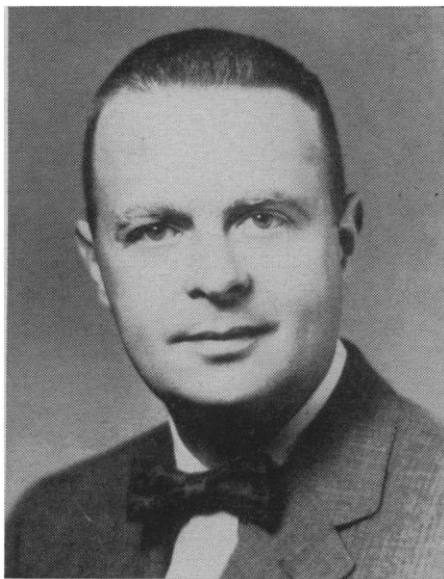
Charles B. Hitchcock. [Dinin]



Elburt F. Osborn



Martin A. Pomerantz. [Barton]



Mathew Ross

tional Academy of Sciences—National Research Council Advisory Committee to the U.S. Coast and Geodetic Survey, 1960–; member, Panel on the Marine Environment of the National Academy of Sciences—National Research Council Committee on Oceanography, 1960–; member, Army Scientific Advisory Panel, 1961–; received Outstanding Achievement Award of the Association of American Geographers, 1961.

AAAS activities: member, Council, 1957–; member, Committee on Council Affairs, 1961–62.

#### Elburt F. Osborn

Elburt F. Osborn, 51 (geology), instructor, Northwestern University, 1937; petrologist, Geophysical Laboratory, Carnegie Institution of Washington, 1938–42; physical chemist, Division 1, National Defense Research Committee, Office of Scientific Research and Development, 1942–45; research chemist, Eastman Kodak Company, 1945–46; professor and chairman, Division of Earth Sciences, Pennsylvania State University, 1946–52, associate dean, College of Mineral Industries, 1952–53, dean, 1953–59, vice president for research, 1959–; National Science Foundation senior postdoctoral fellow, Cambridge University, 1958; National Academy of Sciences—National Research Council Advisory Committees: Geophysics Branch of Office of Naval Research, 1947–50, Mineral Products Division of the National Bureau of Standards, 1959–62, Metallurgy Division, 1959–62, Office of Ordnance Research, 1960–63; National Science Foundation Advisory Panels: Earth Sciences, 1953–54, Course Con-

tent Improvement Programs, 1960–62, Physical Sciences Facilities, 1960–62; associate editor, *American Mineralogist*, 1953–55; director, American Geological Institute, 1956–58; chairman, Divisional Committee for Mathematics, Physics, and Engineering Sciences, National Science Foundation, 1958; president, Mineralogical Society of America, 1961; member, Executive Committee, Sigma Xi, 1961–64; vice president, American Ceramic Society, 1962–63; received War-Navy Certificate of Appreciation, 1948, Regional Technical Meetings Award Medal of the American Iron and Steel Institute, 1954.

AAAS activities: member, Council, 1960–.

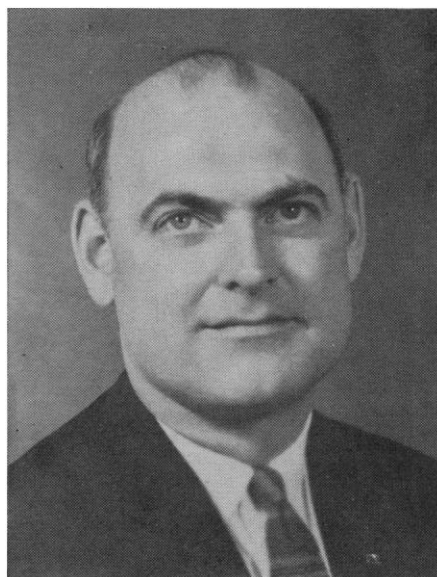
#### Martin Arthur Pomerantz

Martin Arthur Pomerantz, 45 (physics), research assistant, Bartol Research Foundation, Franklin Institute, 1938–41, research fellow, 1941–43, physicist, 1943–59, director, 1959–; Fulbright professor, Muslim University, India, 1952–53; member, faculty of Swarthmore College, 1960; National Geographic Society and Army Air Force Eclipse Expedition to Bocaiúva, Brazil, 1947; leader, National Geographic Society and Bartol Research Foundation Hudson Bay Expeditions, 1949 and 1950; leader, National Geographic Society and Bartol Research Foundation India Expedition, 1952–53; associate editor, *Journal of the Franklin Institute*; member, Committee on Polar Research and Geophysics Research Board, National Academy of Sciences, 1960–; chairman, U.S. Committee on International Quiet Sun Year, 1961–; member, Committee on International Relations, Space Science Board, 1962; vice president, Comité International de Géophysique, 1962–65; member, Committee for the International Year of the Quiet Sun, International Council of Scientific Unions, 1962–67.

AAAS activities: member, Council, 1962–.

#### Mathew Ross

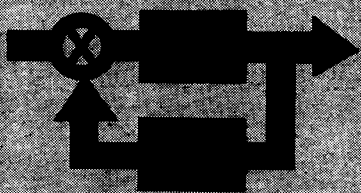
Mathew Ross, 45 (psychiatry), intern, Kings County Hospital, New York, 1942–43; resident, Veterans Administration Hospital, Los Angeles, 1946–48; private practice, 1948–58; psychiatrist, Los Angeles Neurological Institute, 1946–56; clinical professor of psychology, University of California Medical Center, 1948–58, psychiatrist and consultant, Student Health Service, 1948–58, psychiatrist and clinical professor of psychiatry, 1953–58; psychia-



Kenneth C. Spengler



*Attend the  
Seventeenth  
Annual*



**ISA**

**INSTRUMENT-  
AUTOMATION**

**CONFERENCE  
and EXHIBIT**

*Oct. 15-18, 1962  
New York City*

**EXHIBIT  
New York Coliseum  
CONFERENCE  
Hotel New Yorker**

More than 400 exhibits,  
and over 200 papers, will  
demonstrate and report  
on...

**PROGRESS IN  
INSTRUMENTATION / 62**

*Plan now to attend!*



**INSTRUMENT SOCIETY  
of AMERICA**

Penn-Sheraton Hotel, 530 Wm. Penn Place  
Pittsburgh 19, Pa.

trist, Veterans Administration Mental Hygiene Clinic, Los Angeles, 1948, Good Samaritan Hospital, 1948-49, Mt. Sinai Hospital, 1955-58, Compton Sanatorium, 1955-58, Edgemont Hospital, 1956-58; medical director, American Psychiatric Association, 1958-62; Fulbright research scholar, University of Groningen, Netherlands, 1962-63; editor-in-chief, *Mental Hospitals*, 1958-62; consultant and lecturer, Department of Neuropsychiatry, Walter Reed Army Medical Center, 1958-; special professional lecturer, George Washington University Medical School, 1962-; member, Editorial Board, *Excerpta Medica*, 1953-56; member, Board of Directors, American Society of Mental Hospital Business Administrators, 1959-62.

AAAS activities: member, Council, 1958-.

**Kenneth C. Spengler**

Kenneth C. Spengler, 47 (meteorology), statistician, Pennsylvania Department of Labor and Industry, 1937-38; accountant, Pennsylvania Public Utility Commission, 1938-40; secretary, Weather Research Center, U.S. Air Force, 1941; chief, Climatological and Forecast Verification Sections, Air Weather Service, 1942-43; chief, Weather Central, Headquarters U.S. Air Force, 1944-45; deputy chief, Research and Development Division, Headquarters Air Weather Service, 1945-46; executive secretary, American Meteorological Society, 1946-; member, Harvard Visiting Committee (Blue Hill Observatory), 1951-59; member, Advisory Committee on Weather Services, U.S. Department of Commerce, 1953-54; member, National Advisory Committee on Weather Control, 1953-58; member, Board of Directors, National Federation Science Abstracting and Indexing Services, 1959-.

AAAS activities: member, Council, 1949-; member, Council Agenda and Resolutions Committee, 1958-60; member, Committee on Council Affairs, 1961.

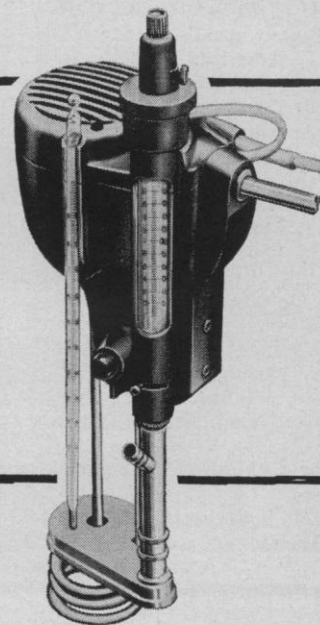
**Forthcoming Events**

**October**

29. **Vacuum Microbalance Techniques**, symp., Los Angeles, Calif. (Cahn Instrument Co., 15505 Minnesota Ave., Paramount, Calif.)

29-30. **Large Rockets**, natl., Sacramento, Calif. (Inst. of the Aerospace Sciences, 2 E. 64 St., New York 21)

**heats  
circulates  
stirs  
pumps**



**BRONWILL  
CONSTANT  
TEMPERATURE  
CIRCULATOR**

Here's everything you need in one compact unit. Smaller, lighter weight and more accurate (to  $\pm 0.01^\circ\text{C}$ ), this new model instantly converts any suitable container to an efficient, closely controlled, constant temperature bath or circulating system. Easy to use—easy to store—always ready for the next bath. Like more information? Just drop us a note and we'll rush complete data.



**BRONWILL  
SCIENTIFIC**

A DIVISION OF WILL SCIENTIFIC, INC.  
1409 N. GOODMAN ST, ROCHESTER 3, N.Y.