



# FLY UNITED JETS TO THE American Association for the Advancement of Science CONVENTION

Philadelphia—December 26–30

Call your Travel Agent or United.

THE EXTRA CARE AIRLINE

**UNITED**

®

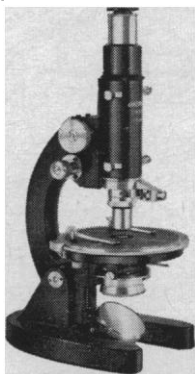
## Try UNITRON'S new POLARIZING MICROSCOPE

The Model MPS is a precision instrument designed to meet the exacting requirements of science, education and industry. Ideal for work in chemistry, crystallography, biology, as well as the technology of paper, glass, textiles and petroleum.

- Eyepieces: 5X (micro), 10X (cross.)
- Objectives: 4X, 10X, 40X, achromatic, strain-free, centerable
- Nosepiece: quick-change type
- Substage condenser: focusable, 3-lens, swing-out top mount, iris diaphragm
- Polaroid polarizer: rotatable 360°
- Polaroid analyzer: in sliding mount
- Bertrand lens: centerable
- Stage: 115mm diameter, revolves 360°, reads to 6' with vernier
- 2 Compensators: quarter-wave plate and first order red plate
- Focusing: both coarse and fine

FREE TEN-DAY TRIAL

Quantity prices on three or more  
Accessory mechanical stage \$14.75



**\$269**  
fob Boston

**UNITRON**

INSTRUMENT COMPANY • MICROSCOPE SALES DIV.  
66 NEEDHAM ST., NEWTON HIGHLANDS 61, MASS.

Please rush UNITRON's Microscope Catalog 4F-1

Name \_\_\_\_\_

Company \_\_\_\_\_

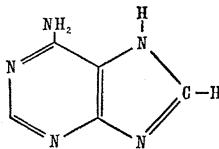
Address \_\_\_\_\_

City \_\_\_\_\_ State \_\_\_\_\_

ARAPAHOE

(Trade Mark)

## NOW FROM ARAPAHOE SYNTHETIC ADENINE



(6-AMINOPURINE)

- Now available in commercial quantities
- Do you require other Purines or Pyrimidines in pilot or commercial quantities?

We Invite Your Inquiries

**ARAPAHOE CHEMICALS, INC.**

2855 WALNUT STREET • BOULDER, COLORADO  
PRODUCERS OF FINE ORGANIC CHEMICALS

program for the conservation of natural communities throughout the world, the International Union for the Conservation of Nature (IUCN) acted as host for the conference, which was held at its headquarters, Les Uttins, at Morges. The IUCN was represented at the conference by Jean Baer, its president, and by two consultants, E. M. Nicholson (London) and E. H. Graham (Washington, D.C.). Its fine hospitality and the stimulating atmosphere which it provided gave great impetus to the work of the Planning Committee.

At the conclusion of the session, G. Laclavère, treasurer of ICSU, discussed with the conference members his experiences with the planning stages of the International Geophysical Year and made many helpful comments on procedure. He expressed great satisfaction with the work accomplished by the committee.

G. LEDYARD STEBBINS

Department of Genetics,  
University of California, Davis

## Forthcoming Events

### October

7–10. Society of Petroleum Engineers, Los Angeles, Calif. (SPF, 345 E. 47 St., New York 17)

7–13. Cardiology, intern. congr., Mexico City, Mexico. (I. Costero, Instituto Nacional de Cardiologia, Ave. Cuauhtemac 300, Mexico 7, D.F.)

8–10. Electronics, natl. conf., Chicago, Ill. (National Electronics Conf., 228 N. La Salle St., Chicago 1)

8–11. Allergy, congr., Basel, Switzerland. (R. Schuppli, c/o Dermatologische Universitäts-Klinik, Basel)

8–11. Infectious Pathology, intern. congr., Bucharest, Rumania. (N. Cajal, Str. Dumbrava, Rossie 23, Bucharest)

8–11. Otorhinolaryngology, congr., Paris, France. (H. Guillon, French Soc. of Otorhinolaryngology, 6 Avenue MacMahon, Paris 17°)

8–11. Water Pollution Control Federation, annual, Toronto, Canada. (R. E. Fuhrman, Executive Secretary, WPCF, 4435 Wisconsin Ave., NW, Washington 16, D.C.)

8–12. American Soc. of Civil Engineers, Detroit, Mich. (W. H. Wisely, 345 E. 47 St., New York 17)

8–12. Industrial Forestry, seminar, St. Paul, Minn. (Z. W. White, Yale School of Forestry, 205 Prospect St., New Haven 11, Conn.)

8–12. Instruments and Research Equipment, symp. and exhibit, Bethesda, Md. (L. Heiss, American Instrument Co., Inc., 8030 Georgia Ave., Silver Spring, Md.)

8–12. Lead and Radiation Shielding Problems, intern. conf., London, England. (J. Oldroyd, Lead Development Assoc., 34 Berkeley Square, London, W.1)

8–13. Treatment and Storage of High-

## IN CHROMATOGRAM ANALYSES ...

Reduce calculation time  
10 to 1, eliminate  
human errors  
with  
the



### INFOTRONICS CRS-1 Digital Chromatograph Integrator

Labor-saving, automatic and accurate, the CRS-1 Digital Integrator accepts the output signal of any common gas chromatograph and converts it to digital values of both retention time and relative area. Peak retention times and peak areas are then recorded simultaneously in any of the common formats: digital printer or typewriter, punched IBM cards, punched paper tape, or magnetic tape using the Infotronics R-1 Digital Magnetic Recorder.

#### FEATURES AND SPECIFICATIONS

1. CRS-1 automatically resolves "side" or partial peaks into separate areas.
  2. High speed integration response — will process peaks spaced as closely as 1.5 seconds.
  3. High resolution — 10,000 counts per second give maximum area accuracy.
  4. Automatic area totalizing.
  5. Works equally well with either ionization or thermal conductivity detectors.
  6. Optional input selector switch allows you to switch CRS-1 to five different chromatographs.
  7. Output data compatible with computer.
- Input: Full scale ranges—50 mv standard or 1 mv with preamplifier.  
Output: linear to 100% overload on input.  
Integrator: Six digits standard.  
Accuracy: 0.1% of full scale maximum error in integration conversion. No errors in counting per se.  
Transistorized control circuit: Maximum threshold sensitivity to rate of change of detector signal is better than 15 microvolts/second, or 1 microvolt/second with preamplifier.

For complete information,  
and a list of satisfied users,  
please contact



1401 S. Post Oak Road  
Houston 27, Texas

137

Level Radioactive Wastes, symp., Vienna, Austria. (Intern. Atomic Energy Agency, 11 Kärntner Ring, Vienna 1)

8-20. **Statistical Forecasting**, training seminar, Paris, France. (World Meteorological Organization, 41 Avenue Giuseppe Motta, Geneva, Switzerland)

9-11. **Analytical Chemistry in Nuclear Reactor Technology**, Gatlinburg, Tenn. (C. D. Susano, Oak Ridge Natl. Laboratory, P.O. Box X, Oak Ridge, Tenn.)

9-11. **International Assoc. of Food Analysts**, symp., Bordeaux, France. (L. de Saint Rat, 18 Avenue de Villars, Paris 7<sup>e</sup>, France)

9-11. **Nuclear Reactor Chemistry**, conf., Gatlinburg, Tenn. (W. R. Grimes, Oak Ridge Natl. Laboratory, P.O. Box X, Oak Ridge, Tenn.)

9-12. **American Dietetic Assoc.**, annual, Miami Beach, Fla. (V. F. Harger, Dept. of Home Economics, Ohio State Univ., Columbus 10)

9-12. **Scientific Soc. for Aviation**, annual, Brunswick, Germany. (Wissenschaftliche Gesellschaft für Luftfahrt, Martinstr. 40-42, Cologne, Germany)

10-12. **Comparative Medicine**, intern. symp., New York, N.Y. (J. D. Bech, Animal Medical Center, 350 Lafayette St., New York 12)

12. **Biochemical Aspects of Hormone Action**, symp., St. Louis, Mo. (A. B. Eisenstein, Jewish Hospital of St. Louis, 216 S. Kingshighway Blvd., St. Louis 10)

12-13. **American Medical Writers' Assoc.**, Washington, D.C. (S. O. Waife, P.O. Box 1796, Indianapolis 6, Ind.)

12-13. **Photography of Electronic Display**, symp., Washington, D.C. (Soc. of Photographic Scientists and Engineers, P.O. Box 1609, Washington, D.C.)

12-14. **Phosphorylated Glucides**, intern. symp., Milan, Italy. (Segreteria del Comitato Organizzatore del Symposium Internazionale sui Glucidi Fosforilati, Via Modica 6, Milano)

13. **Metabolic and Structural Alterations in Pre-Diabetes**, symp., New York, N.Y. (R. Levine, New York Diabetes Assoc., 104 E. 40 St., New York 16)

13-14. **Fundamental Nature of Living Matter**, symp., Cleveland, Ohio. (Dedication Committee Office, Allen Memorial Library, 11000 Euclid Ave., Cleveland 6, Ohio)

13-14. **International Federation of Surgical Colleges**, annual, Atlantic City, N.J. (I. S. Ravdin, American College of Surgeons, 3400 Spruce St., Philadelphia 4, Pa.)

13-14. **Society for Psychophysiological Research**, annual, Denver, Colo. (S. G. Margolin, Dept. of Psychophysiology, Univ. of Colorado, Denver 20)

13-14. **Unfinished Tasks in the Behavioral Sciences**, symp., Chicago, Ill. (A. Abrams, Div. of Behavioral Sciences, Chicago Medical School Research Institute, 2020 W. Ogden Ave., Chicago 12)

14-17. **Electrical Insulation**, conf., Hershey, Pa. (L. J. Frisco, Div. of Engineering and Industrial Research, Natl. Acad. of Sciences, 2101 Constitution Ave., Washington 25)

14-19. **Dentistry Teaching**, seminar, Bogota, Colombia. (Pan American Sanitary Bureau, Washington 6)

14-19. **Pulp and Paper Engineering**,

# Quality

in Scientific Publishing

## NEW BOOKS

July-August 1962

### Fifth International Congress for Electron Microscopy

Edited by SYDNEY S. BREESE

Complete set: \$32.00

Volume 1, 564 pp., \$20.00

Volume 2, 684 pp., \$20.00

### Barley and Malt

Biology, Biochemistry, Technology

Edited by A. H. COOK

740 pp., \$21.00

### The Eye

Edited by HUGH DAVSON

Volume 2, 797 pp., \$22.00

Volume 3, 324 pp., \$12.00

Volume 4, 431 pp., \$14.00

Previously published:

Volume 1, 440 pp., \$14.00

### Recent Progress in the Chemistry of Natural and Synthetic Colouring Matters and Related Fields

Dedicated to

Professor K. Venkataraman

Edited by T. S. GORE, B. S. JOSHI,

S. V. SUNTHANKAR and B. D. TILAK

675 pp., \$24.00

### The Problems of Laboratory Animal Disease

Edited by R. J. C. HARRIS

266 pp., \$9.00

### Differential Geometry and Symmetric Spaces

By S. HELGASON

486 pp., approx. \$13.50

### Wood Extractives

and Their Significance to the  
Pulp and Paper Industries

Edited by W. E. HILLIS

513 pp., \$16.00

### Continental Drift

Edited by S. K. RUNCORN

340 pp., \$12.00

YOUR TECHNICAL BOOKSELLER  
can furnish up-to-date information  
on any of our titles.

## ACADEMIC PRESS

NEW YORK AND LONDON

111 Fifth Avenue, New York 3

Berkeley Square House, London, W. 1

conf., Montreal, Canada. (Technical Assoc. of the Pulp and Paper Industry, 360 Lexington Ave., New York 17)

15-17. Association of Official **Agricultural Chemists**, annual, Washington, D.C. (W. Horwitz, Box 540, Benjamin Franklin Station, Washington 4)

15-17. **Materials Handling**, conf., Cincinnati, Ohio. (American Soc. of Mechanical Engineers, 29 W. 39 St., New York 18)

15-17. Selection Problems in **Plastics**. Amsterdam, Netherlands. (Secretariat, Tesselschadestraat 5, Amsterdam W.)

15-17. Specialists on **Antisubmarine Warfare**, natl. symp., Boston, Mass. (classified secret). (T. Nussdorfer, Geophysics Corp. of America, Bedford, Mass., or Institute of the Aerospace Sciences, 2 E. 64 St., New York 21)

15-18. American **Meteorological Soc.**, natl., New York, N.Y. (AMS, 45 Beacon St., Boston 8, Mass.)

15-18. **Danube Research**, intern. symp., Bratislava, Czechoslovakia. (L. Kneppo, Slovak Acad. of Sciences, Ul. Obrancov Mieru 41, Bratislava)

15-18. **Instrument-Automation**, conf. and exhibit, New York, N.Y. (Meetings Manager, Instrument Soc. of America, Penn-Sheraton Hotel, Pittsburgh 19, Pa.)

15-18. **Space Phenomena and Measurement**, intern. symp., Detroit, Mich. (H. E. DeBolt, AVCO Corp., 201 Lowell St., Wilmington, Mass.)

15-19. American College of **Surgeons**, annual clinical congr., Atlantic City, N.J. (ACS, 40 Erie St., Chicago 11, Ill.)

15-19. American **Public Health Assoc.**, annual, Miami Beach, Fla. (APHA, 1790 Broadway, New York, N.Y.)

15-19. **Diagnosis and Treatment of Radioactive Poisoning**, Vienna, Austria. (World Health Organization, Palais des Nations, Geneva, Switzerland)

15-20. **Laboratory, Measurement, and Automation Techniques in Chemistry**, intern. congr. and exhibit, Basel, Switzerland. (Sekretariat, ILMAS, Clarastr. 61, Basel)

15-26. **Statistics**, Inter-American conf., Washington, D.C. (Inter-American Statistical Inst., Pan American Union, Washington 6)

16. Oak Ridge Inst. of **Nuclear Studies**, Oak Ridge, Tenn. (W. G. Pollard, ORINS, Oak Ridge)

16-18. **Lubrication**, conf., Pittsburgh, Pa. (American Soc. of Mechanical Engineers, 29 W. 39 St., New York 18)

16-18. Noise in **Electronic Systems**, seminar, Rochester, N.Y. (H. Kentner, Extended Services Div., Rochester Inst. of Technology, Rochester 8)

16-19. **Textile Materials**, New York, N.Y. (American Soc. for Testing and Materials, 1916 Race St., Philadelphia 3, Pa.)

17-20. **Insect Pathology and Microbial Control**, intern. colloquium, Paris, France. [Secretariat, Intern. Committee for Biological Control, c/o Laboratoire du Lutte Biologique, La Minière (Seine-et-Oise), France]

18. **Bibliographical Soc. of America**, Cambridge, Mass. (F. R. Goff, Rare Book

Div., Library of Congress, Washington 3)

18-19. **Applied Spectroscopy and Analytical Chemistry**, annual Pacific regional meeting, Pasadena, Calif. (W. F. Ulrich, Scientific and Process Instruments Div., Beckman Instruments, Fullerton, Calif.)

18-19. **Cellulose**, conf., Syracuse, N.Y. (Cellulose Research Inst., State Univ. College of Forestry at Syracuse Univ., Syracuse 10)

18-19. German Soc. for **Operations Research**, annual, Bonn, Germany. (W. Krelle, GSOR, c/o Universität, Liebfrauenweg 5, Bonn)

18-20. **Indiana Acad. of Science**, Evansville. (W. W. Bloom, Valparaiso Univ., Valparaiso, Ind.)

18-21. Central Assoc. of **Electroencephalographers**, annual, Rochester, Minn. (D. W. Klass, Mayo Clinic, Rochester)

19-20. **Aging**, symp., San Francisco, Calif. (M. A. Shearn, Kaiser Foundation Hospital, Oakland, Calif.)

19-20. **Quantitative Systematics**, symp., St. Louis, Mo. (R. L. Dressler, Missouri Botanical Garden, 2315 Tower Grove Ave., St. Louis 10)

21-24. **Fundamental Research**, symp., Chicopee, Mass. (Technical Assoc. of the Pulp and Paper Industry, 360 Lexington Ave., New York 17)

21-24. Society of American **Foresters**, Atlanta, Ga. (H. Clepper, 425 Mills Bldg., 704 17 St., NW, Washington 6)

22-24. **Aerospace and Navigational Electronics**, conf., Baltimore, Md. (Inst. of Radio Engineers, Office of the Technical Secretary, 1 E. 79 St., New York 21)

22-26. Advances in **Radioisotope Scanning**, symp., Oak Ridge, Tenn. (R. M. Kniseley, Oak Ridge Inst. of Nuclear Studies, Oak Ridge)

22-26. **Diabetes**, Buenos Aires, Argentina. (C. A. Campos, Sociedad Argentina de Diabetes, Santa Fe 1171, Buenos Aires)

22-26. Society of **Motion Picture and Television Engineers**, convention, Chicago, Ill. (C. S. Stodter, 55 W. 42 St., New York 35)

23-25. **Occupational Therapists**, intern. congr., Philadelphia, Pa. (M. T. Cardwell, 963 Avenue Rd., Toronto 7, Ont., Canada)

23-27. American Soc. of **Oral Surgeons**, New Orleans, La. (L. W. Peterson, 117 N. Meramec St., Clayton 5, Mo.)

23-1. **Care of Children in Institutions**, Geneva, Switzerland. (World Health Organization, Palais des Nations, Geneva)

24-25. **Computer Applications**, symp., Chicago, Ill. (R. S. Hollitch, Armour Research Foundation, Illinois Inst. of Technology, 35 W. 33 St., Chicago 16)

24-26. Design of Experiments in **Army Research**, Development, and Testing, Washington, D.C. (by invitation only). (F. G. Dressel, Army Research Office, Box CM, Duke Station, Durham, N.C.)

24-26. Society for **Experimental Stress Analysis**, annual, Milwaukee, Wis. (B. E. Rossi, 21 Bridge Square, Westport, Conn.)

24-27. International Assoc. of **Milk and Food Sanitarians**, annual, Philadelphia, Pa. (H. L. Thomasson, Box 437, Shelbyville, Ind.)

24-28. **Angiology**, intern. conf., Darmstadt, Germany. (Sekretariat, c/o Medizinische Klinik, Bismarckstr. 28, Darmstadt)

(See issue of 10 August for comprehensive list)

**laboratory tapes and labels**

NAME \_\_\_\_\_  
SPECIMEN \_\_\_\_\_  
Rm. No. \_\_\_\_\_ Date \_\_\_\_\_

**PATHOLOGY SPEC.**

NAME	SEX	AGE
DATE	ROOM	NUMBER
DOCTOR	SPECIMEN	

Use Time Tapes and Labels in your lab. Eliminate errors and confusion. Time labels are quick and easy to use. These clean, white tapes accept any kind of pen or pencil marking — or they can be pre-printed to your specifications.

Acid, water, dirt, grease or heat will not affect them. Withstand temperatures from 250° to -70°.

Also available in a variety of colors.

**Cut costs and save time with TIME Tapes and Labels**

**PROFESSIONAL TAPE CO., INC.**  
365U BURLINGTON AVE. • RIVERSIDE, ILL.