

on the Cervix, New York, N.Y. (W. R. Lang, Jefferson Medical College, Philadelphia, Pa.)

7-9. Texas Acad. of Science, Galveston. (D. E. Edmondson, Mathematics Dept., 115 Bendect Hall, Univ. of Texas, Austin 12)

8. Food and Agriculture Organization of the U.N., Advisory Group on Training in Home Economics and Social Work, Rome, Italy. (Intern. Agency Liaison Branch, Office of Director General, FAO, Viale delle Terme di Caracalla, Rome)

8-9. American Rheumatism Assoc., interim session, Washington, D.C. (F. E. Demartini, 622 W. 168 St., New York 32)

8-9. Association for Research in Nervous and Mental Diseases, annual, New York, N.Y. (Scientific Liaison Office, Natl. Research Council, Sussex Dr., Ottawa, Canada)

8-9. Symposium on Plasma Membrane, New York, N.Y. (A. P. Fishman, New York Heart Assoc., 10 Columbus Circle, New York 19)

8-10. American Psychoanalytic Assoc., New York, N.Y. (D. Beres, 151 Central Park W., New York 23)

9-10. Academy of Psychoanalysis, New York, N.Y. (J. H. Merin, 125 E. 65 St., New York 21)

10-13. American Phytopathological Soc., Biloxi, Miss. (G. A. Zentmyer, Dept. of Plant Pathology, Univ. of California, Riverside)

10-14. Psychosomatic Medicine Symp., 6th, Philadelphia, Pa. (Miss M. R. Carmosin, Hahnemann Medical College and Hospital, 235 N. 15 St., Philadelphia 2, Pa.)

10-17. Latin American Congr. on Microbiology, 2nd, San José, Costa Rica. (J. L. De Abate, Secretary General, Apartado 1404, San José)

11. Society of Photographic Scientists and Engineers, Washington, D.C. (C. M. Bailey, Rte. 4, Box 404, Fairfax, Va.)

11-15. Agricultural and Public Health Aspects of Radioactive Contamination in Normal and Emergency Situations, technical seminar, The Hague, Netherlands. (Food and Agriculture Organization of the U.N., Intern. Agency Liaison Branch, Office of the Director General, Viale delle Terme di Caracalla, Rome, Italy)

11-15. Symposium on Organization of Agricultural Research, Muguga, Kenya. (Commission for Technical Cooperation in Africa South of the Sahara, Pvt. Mail Bag 2359, Lagos, Nigeria)

11-16. Ionospheric Soundings in the Intern. Geophysical Year/Intern. Geophysical Cooperation-1959 Symp., Nice, France. (A. H. Shapley, URSI World-Wide Soundings Commission, Central Radio Propagation Laboratory, Natl. Bureau of Standards, Boulder, Colo.)

12-14. Association for Computing Machinery, eastern joint computer conf., Washington, D.C. (B. Oldfield, I.B.M. Corp., 326 E. Montgomery, Rockville, Md.)

12-15. American Soc. of Agricultural Engineers, Chicago, Ill. (J. L. Butt, ASAE, 420 Main St., St. Joseph, Mich.)

13. American Acad. of Arts and Sciences, Brookline, Mass. (J. L. Oncley, 280 Newton St., Brookline 46)

15-16. Oklahoma Acad. of Science,

Stillwater. (D. Buck, Northern Oklahoma Junior College, Tonkawa)

17-18. International Congr. of Comparative Pathology, 9th, Paris, France. (L. Grollet, Comité International Permanent des Congrès de Pathologie Comparée, 63 Avenue de Villiers, Paris 17<sup>e</sup>)

19-23. Inter-American Congr. of Psychology, 7th, Monterrey, Mexico. (G. M. Gilbert, Psychology Dept., Long Island Univ., Brooklyn 1, N.Y.)

22-29. Plant Tissue and Organ Culture, intern. symp., New Delhi, India. (P. Maheshwari, Univ. of Delhi, Delhi)

26-28. History of Science Soc., annual, Washington, D.C. (J. C. Greene, 1121 Iowa Ave., Ames, Iowa)

26-31. American Assoc. for the Advancement of Science, annual, Denver, Colo. (R. L. Taylor, AAAS, 1515 Massachusetts Ave., NW, Washington 5)

27-29. American Folklore Soc., Cincinnati, Ohio. (T. P. Coffin, 110 Bennett Hall, Univ. of Pennsylvania, Philadelphia 4)

27-29. American Geophysical Union, 1st Western natl., Los Angeles, Calif. (A. N. Sayre, U.S. Geological Survey, Washington 25)

27-29. American Economic Assoc., New York, N.Y. (J. W. Bell, AEA, Northwestern Univ., Evanston, Ill.)

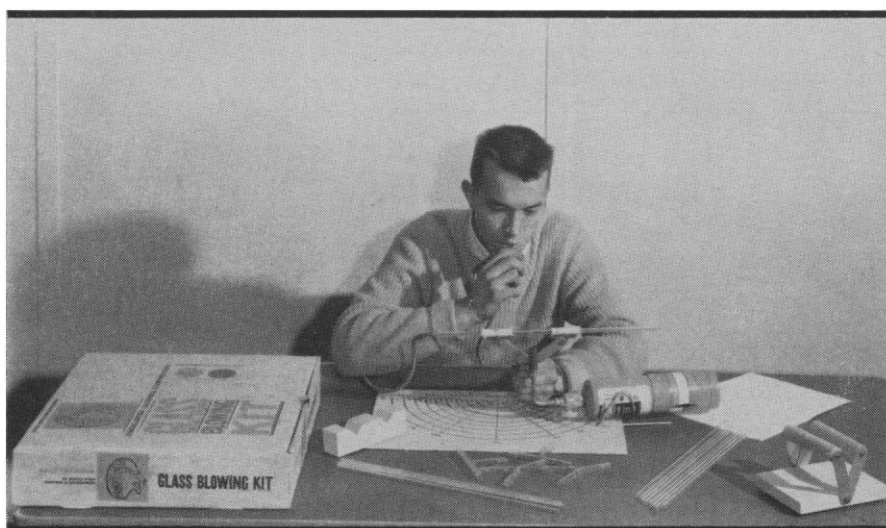
27-29. American Physical Soc., Los Angeles, Calif. (K. K. Darrow, 538 W. 120 St., New York 27)

*For Christmas...*

Here's a truly educational gift that will provide real enjoyment to the scientifically-minded boy or girl.

## Macalaster Bicknell's GLASS BLOWING KIT

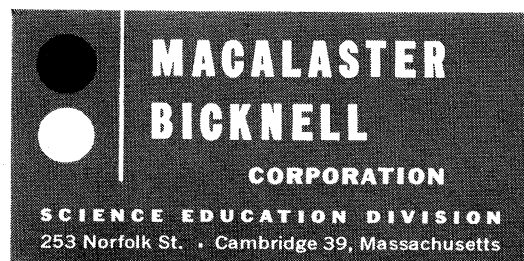
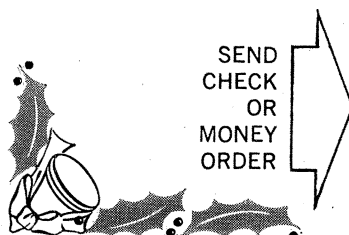
PRACTICAL • FUNCTIONAL • LOTS OF FUN



Kit comes complete with all equipment and illustrated instructions necessary for glass blowing. Typical of the wide variety of items which can be made are:

- Novelties such as glass animals, bottled coins, etc.
- Chemical Apparatus such as T's, Y's, ring seals, traps and condensers.

Only \$36<sup>50</sup>  
Job Cambridge



# GET YOUR ADVANCE COPY

## of the General Program of the AAAS Denver Meeting by first class mail – early in December

The *General Program* of the 128th Meeting of the AAAS in Denver, 26–31 December 1961, will be available to you, at cost, within the first week in December—whether you can attend the Meeting or not.

### Program Content

1. The two-session AAAS General Sessions, "Moving Frontiers of Science," Part I—Speakers: Howard A. Meyerhoff and Arthur R. von Hippel; Harrison Brown, presiding. Part II—Speakers: Halton C. Arp and E. W. Fager; Harrison Brown, presiding.
2. The 29th John Wesley Powell Memorial Lecture. Speaker: Glenn T. Seaborg; Paul M. Gross, presiding.
3. On "AAAS Day," the four broad, interdisciplinary symposia—Physics of the Upper Atmosphere; Geochemical Evolution—The First Five Billion Years; Existing Levels of Radioactivity in Man and His Environment; and Water and Climate—arranged by AAAS Sections jointly.
4. The Special Sessions: AAAS Presidential Address and Reception; Joint Address of Sigma Xi and Phi Beta Kappa by Harrison Brown; the Tau Beta Phi Address by John A. Logan; National Geographic Society Illustrated Lecture; and the second George Sarton Memorial Lecture by Joseph Kaplan.
5. The programs of all 18 AAAS Sections (specialized symposia and contributed papers).
6. The programs of the national meetings of the American Astronomical Society, American Society of Criminology, American Nature Study Society, American Society of Naturalists, American Society of Zoologists, Beta Beta Beta Biological Society, Biometric Society (W.N.A.R.), National Association of Biology Teachers, Scientific Research Society of America, Society for General Systems Research, Society of Protozoologists, Society of Systematic Zoology, and the Society of the Sigma Xi.
7. The multi-sessioned special programs of the American Astronautical Society (Hugh L. Dryden as dinner speaker), American Physiological Society, American Psychiatric Association, Association of American Geographers, Ecological Society of America, National Science Teachers Association, National Speleological Society—and still others, a total of some 70 to 80 participating organizations.
8. The sessions of the Academy Conference, the Conference on Scientific Communication, and the Conference on Scientific Manpower.
9. The sessions of the AAAS Cooperative Committee on the Teaching of Science and Mathematics, of the AAAS Committee on Science in the Promotion of Human Welfare.
10. Titles of the latest foreign and domestic scientific films to be shown in the AAAS Science Theatre.
11. Exhibitors in the 1961 Annual Exposition of Science and Industry and descriptions of their exhibits.

### Advance Registration

Advance registration has these decided advantages: (1) You avoid delay at the Registration Center upon arrival; (2) You receive the *General Program* in ample time to decide, unhurriedly, which events and sessions you particularly wish to attend; (3) Your name is posted in the Visible Directory as the Meeting opens.

The following coupon may be used both by advance registrants and by those who wish only the advance copy of the *General Program*.

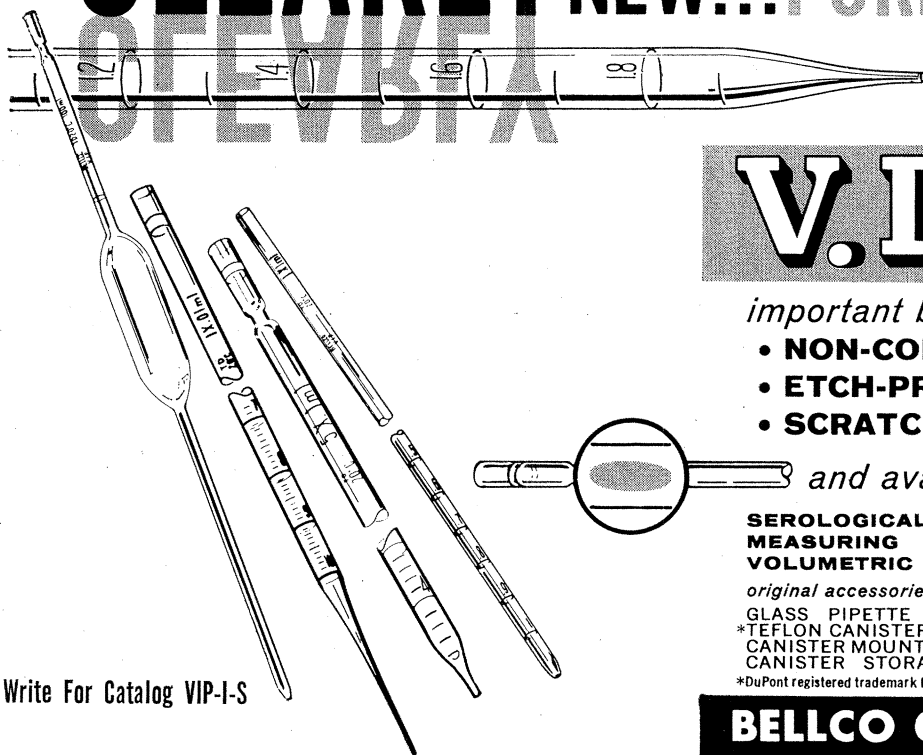
-----THIS IS YOUR COUPON FOR AN ADVANCE COPY OF THE GENERAL PROGRAM-----

- 1a. ☐ Enclosed is \$3.50 for my advance Registration Fee which brings me the *General Program*, Convention Badge, and all privileges of the Meeting (50¢ is for first-class postage and handling).
  - 1b. ☐ Enclosed is \$2.50 for only the *General Program*. (It is understood that, if I should attend the Meeting later, the Badge—necessary for the privileges of the Meeting—will be secured for \$1.00 more.)  
(check 1a or 1b)
2. FULL NAME (Dr., Miss, etc.) .....  
(Please print or typewrite) (Last) (First) (Initial)
3. OFFICE OR HOME ADDRESS .....  
(For receipt of *General Program*)
- CITY ..... ZONE ..... STATE .....
4. FIELD OF INTEREST .....
5. ACADEMIC, PROFESSIONAL, OR  
BUSINESS CONNECTION .....
6. CONVENTION ADDRESS .....  
(May be added later, after arrival)

Please mail this coupon and your check or money order for the total amount to the  
AMERICAN ASSOCIATION FOR THE ADVANCEMENT OF SCIENCE  
1515 Massachusetts Avenue, NW, Washington 5, D.C.

ORDERS RECEIVED AFTER 15 DECEMBER 1961 CANNOT BE PROCESSED

# CLEARLY NEW... PURELY *Bellco*



## V.I.P.

Very Important Pipettes  
for  
Very Important People

important because they're:

- **NON-CORROSIVE** Borosilicate Glass
- **ETCH-PROOF** Will Never Cloud
- **SCRATCH RESISTANT**

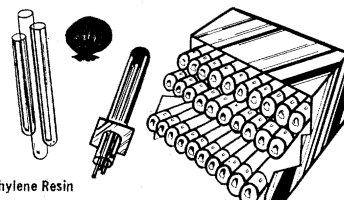
and available **COLOR CODED**

**SEROLOGICAL  
MEASURING  
VOLUMETRIC**

original accessories too!

GLASS PIPETTE CANISTERS  
\*TEFLON CANISTER CUSHIONS  
CANISTER MOUNTING PLATES  
CANISTER STORAGE RACKS

\*DuPont registered trademark for Polytetrafluoroethylene Resin



Write For Catalog VIP-I-S

**BELLCO GLASS INC. VINELAND, N.J.**

## PERSONNEL PLACEMENT

**CLASSIFIED:** Positions Wanted 25¢ per word, minimum charge \$4. Use of Box Number counts as 10 additional words. Payment in advance is required.

**COPY** for ads must reach **SCIENCE** 2 weeks before issue date (Friday of every week).

**DISPLAY: Positions Open.** Rates listed below—no charge for Box Number. Rates net. No agency commission allowed for ads under 4 inches. No cash discount. **Minimum ad:** 1 inch. Ads over 1 inch will be billed to the nearest quarter inch. Frequency rate will apply to only repeat of same ad. No copy changes. Payment in advance is required except where satisfactory credit has been established.

Single insertion **\$40.00** per inch  
4 times in 1 year **\$8.00** per inch

**For PROOFS** on display ads, copy must reach **SCIENCE** 4 weeks before date of issue (Friday of every week).

Replies to blind ads should be addressed as follows:

Box (give number)  
Science  
1515 Massachusetts Ave., NW  
Washington 5, D.C.

### FELLOWSHIPS

Applications now being accepted for graduate study in **Biochemical Pharmacology** leading to Ph.D. degree. Prerequisites are a B.S. degree in chemistry or biology with a strong chemistry background. Research programs in progress on amino acid and nucleic acid metabolism, biochemical genetics, smooth muscle physiology, mechanism of enzyme action, and mechanism of drug action. Fellowships available with an initial stipend of \$3000 per annum. Personal interviews arranged for promising applicants. Write to Chairman, Department of Pharmacology, St. Louis University School of Medicine, St. Louis 4, Missouri. 11/24

### POSITIONS WANTED

**Coordinator of Research.** Ph.D. chemistry, 1941. Outstanding record in industrial, university, and government research. Box 217, **SCIENCE**. 11/24; 12/1

**Economic Botanist-Horticulturist:** 18 years' experience tropical Americas and Africa, mostly in research. Desires position after 1 December; teaching certification. Michigan and Pennsylvania. Box 218, **SCIENCE**. X

**Translation.** Russian scientific literature rendered into clear, idiomatic English by science doctorate, American. Also French into English. Prompt, reasonable. Box 220, **SCIENCE**. X

**Zoologist-Marine Biologist, M.S.;** age 31; teaching and research experience. Desires position in industry or education. Box 219, **SCIENCE**. X

### POSITIONS OPEN

**PHYSICAL CHEMIST, Ph.D.,** with less than 5 years' experience. Qualified applicant will be able to solve theoretical, applied, and laboratory problems in gas dynamics, thermodynamics, chemical kinetics, and high temperature chemical equilibrium, and will be a U.S. citizen.

**BIOCHEMIST, Ph.D.,** with less than 5 years' experience. Qualified applicant will be able to solve theoretical, applied, and laboratory problems in biochemistry, biology, microbiology, and organic chemistry, and will be a U.S. citizen.

These positions both provide excellent opportunities for professional growth in a new and rapidly growing research and development organization. Send résumé in confidence to Dr. J. B. Opfell, **Dynamic Science Corporation**, 1445 Huntington Drive, South Pasadena, California.

### POSITIONS OPEN

The **UNIVERSITY OF ALBERTA** invites applications for positions in the **Department of Mathematics** at the **Lecturer, Assistant Professor, and Associate Professor** level. Appointments may be made at either the Edmonton campus or the Calgary campus of the university.

Salaries for 1962-63 will be in the ranges: assistant professors, \$6000-\$8700; associate professors, \$9000-\$11,700; with no fixed range for lecturers. Appointments will date from 1 September 1962, with commencing salaries dependent on experience and qualifications. Annual increments are normally given for satisfactory service. A pension plan is in operation and a removal grant may be made for married appointees and for single persons coming from outside North America.

Applications, accompanied by (1) a recent photograph, (2) transcripts of university records, (3) curriculum vitae, and (4) the names of three persons from whom references can be obtained, should be forwarded to Professor M. Wyman, Mathematics Department, University of Alberta, Edmonton, Alberta. 12/1, 8, 15

## SCIENTIST

Entomologist, Nematologist, or Biologist (B.S. or M.S.) with training and preferably experienced, for agricultural pesticides research.

Liberal employee benefit program.

Forward full resume to:

**BUSINESS MANAGER**

**The Squibb Institute  
For Medical Research**

New Brunswick,

New Jersey

An Equal Opportunity Employer

## POSITIONS OPEN

### POSITIONS OPEN

Effective 1 January 1962

The rates for advertising in the Positions Open section of Science will be increased to \$50 per inch.

(a) **BIOCHEMIST**, metabolism research at midwestern Medical School; (b) **ORGANIC CHEMIST**, experienced in synthesis, pharmaceutical house; Midwest; (c) **D.V.M.**, develop and evaluate research methods, \$10-15,000; East; (d) **CHEMIST**, proprietary drug experience; \$14-18,000; East; (e) **CLINICAL BIOCHEMIST**, 275 bed midwestern hospital; \$11-12,000; (f) **VIROLOGIST** for research in viral infection diseases; Midwest; (g) **PHYSICAL CHEMIST**, pharmaceutical research; \$9-10,800; East; (h) **BIOCHEMIST**, experienced in nutritional research; \$9-15,000; Midwest; (i) **PHARMACOLOGIST**, recent graduate, neurological orientation; \$9500 up; East. Many other opportunities available. Please write Science Division, **The Medical Bureau, Inc.**, Burnice Larson, *Chairman*, 900 North Michigan Avenue, Chicago 11, Illinois

## POSITIONS OPEN

Applications are invited for the position of **LECTURER** or **SENIOR LECTURER IN GENETICS** in the department of zoology. It is desirable that applicants should be able to take up the position by June 1962.

The salary ranges are: Lectureship, £A1650 to £A2450 per annum; Senior Lectureship, £A2450 to £3000 per annum. Initial salary will be determined according to qualifications and experience. Superannuation is on the F.S.S.U. basis.

Further particulars and conditions of appointment may be obtained from the Registrar, **University of Melbourne**, Parkville, N.Z., Victoria, Australia, and applications should reach him by 31 December 1961.

### SENIOR RESEARCH PHARMACOLOGIST

Ph.D. (pharmacology or physiology) to be responsible for pharmacologic research program involving biologic evaluation of novel enzymes for possible medical use. Principal duties would include development and implementation of a comprehensive enzyme screening and evaluation program. Will report directly to the Director of Pharmacologic Research. Midwestern metropolitan location. Excellent community and research facilities. Reply to R. M. Gesler,

**Baxter Laboratories, Inc.**  
Morton Grove, Ill.

## BIOCHEMIST-Ph.D. WARNER-LAMBERT RESEARCH INSTITUTE

Addition to staff of central research facility requires scientist with special interest in enzymology, energetics & intermediary metabolism. Program directed toward learning the mechanisms involved in diseases of the cardiovascular and central nervous systems. Recent Ph.D. or one with maximum of 3 years experience required. Consideration given M.S. with directly related experience. Relocation expenses paid.

Send Resume Stating Salary Requirements to: William J. Sumner

**WARNER-LAMBERT RESEARCH INSTITUTE**  
Morris Plains, N.J.

## METABOLIC RESEARCH POSTS

Emphasis on endocrinological research has stimulated the creation of two new positions in our Metabolic Department. Each offers an opportunity to the creative, energetic scientist to participate fully in laboratory programs aimed at the discovery and development of significant new pharmaceutical products.

### ENDOCRINOLOGY SECTION HEAD

- ▶ Should possess Ph.D. or M.D. degree with strong background in basic medical sciences plus demonstrated interest and experience in the study of endocrine function and dysfunction.
- ▶ To direct basic and applied research programs and to supervise activities of several Ph.D.'s and their groups.

### SENIOR LABORATORY SCIENTIST

- ▶ Should possess Ph.D. degree with broad training in physiology or basic medical sciences with special interest in relationship of biochemistry to bodily function.
- ▶ To conduct laboratory investigations of new chemical leads thought to be useful in correcting metabolic disorders.

Please send resume, including salary requirements, to —

Wallace R. Hall, Employment Manager



**SMITH KLINE & FRENCH  
LABORATORIES**

1502 SPRING GARDEN STREET, PHILADELPHIA 1, PA.

An Equal Opportunity Employer

## The Market Place

CHARLES RIVER \*CD-1

(Caesarean-derived)

HIGH
STRESS

**ALBINO**  
**SWISS ICR**

*Hypophysectomies available*

**THE CHARLES RIVER  
MOUSE FARMS**

\* Trade-mark  
1018 Beacon St., Brookline 46, Mass., RE 4-2000

### YOU NEED THIS FREE CATALOG FOR YOUR FILES

Serums, antisera and bloods of all kinds for technicians and tissue culture laboratories. No salesman will call.

**COLORADO SERUM CO.**  
4950 York St. • MAin 3-5373 • Denver 16, Colo.

### • HYPOPHYSECTOMIZED RATS

Shipped to all points via Air Express  
For further information write

**HORMONE ASSAY LABORATORIES, Inc.**  
8169 South Spaulding Ave., Chicago 29, Ill.

### AMINO ACID ANALYSIS

... of proteins, peptides, tissue extracts, foods, and physiological fluids by the Spackman, Moore, Stein ion-exchange method, using the latest Beckman-Spinco Analyzer.

Inquiries for rates and other details are invited.



**Pford  
Laboratories®**

**Analytical Division**

961 Woodside Road  
Redwood City 3, Calif.

### RESEARCH ANIMALS, INC.

3401 Fifth Avenue Pittsburgh 13, Pa.  
Museum 1-4156 Cable: RESEARCH  
ALL Laboratory Animals Available  
Canine Blood for Heart-Lung Machine by Contract

Overnight delivery ANYWHERE  
State Your Needs For Quotations

### BOOKS AND MAGAZINES

#### Your sets and files of scientific journals

are needed by our library and institutional customers. Please send us lists and description of periodical files you are willing to sell at high market prices. Write Dept. A3S, **CANNERS, Inc.**, Boston 20, Massachusetts

FOR UP-TO-DATE INFORMATION ON

### GAS CHROMATOGRAPHY

READ AEROGRAPH RESEARCH NOTES

write for your  
free  
subscription

**WILKENS INSTRUMENT & RESEARCH INC.**  
Box 313-A • Walnut Creek, Calif.

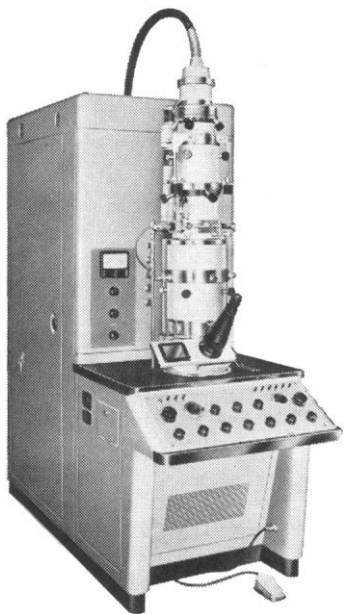
### MAMMARY TUMORS IN MICE

**AAAS Publication No. 22.** By the staff of the National Cancer Institute, National Institutes of Health, F. R. Moulton, Ed.

Published 1945—Now offered at reduced price: \$3.00 prepaid orders by AAAS members, \$3.50 retail. Cloth, 20 tables, 52 illus.

**AAAS**

1515 Massachusetts Avenue, NW,  
Washington 5, D.C.

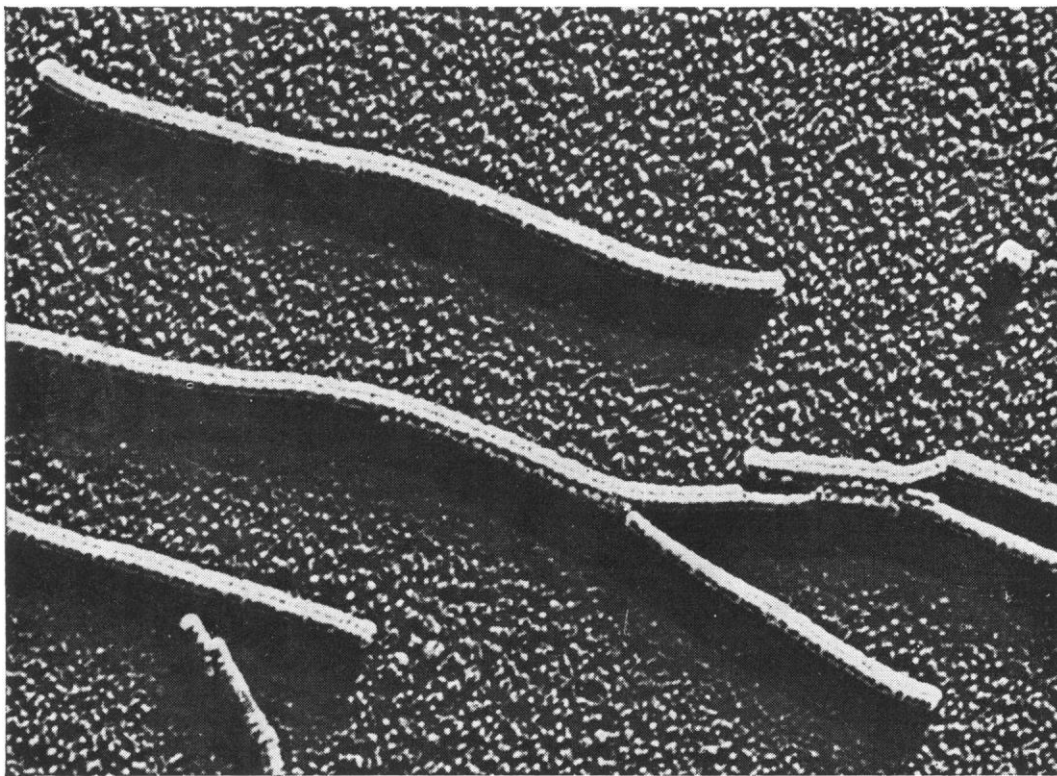


## **NEW JEM-6C ELECTRON MICROSCOPE WITH 8A RESOLUTION FROM FISHER**

Fisher Scientific is now your exclusive United States and Canadian source for electron microscopes and related instruments manufactured by Japan Electron Optics Laboratory Co., Ltd. Model JEM-6C gives you highest available resolving power — 8 Angstroms—for biological and medical work. **Direct magnification:** continuously variable from 600X to 200,000X (photographic magnification: greater than 1,000,000X) so you can study structural detail of all sizes in the same specimen. **Accelerating voltages** of 50, 80 and 100 KV are extremely stable. **Fast change of specimen**—only 30 seconds. **For full details,** call your Fisher branch, or write Fisher Scientific Company, 139 Fisher Building, Pittsburgh 19, Pa.

TOBACCO MOSAIC VIRUS 200,000X

X-197



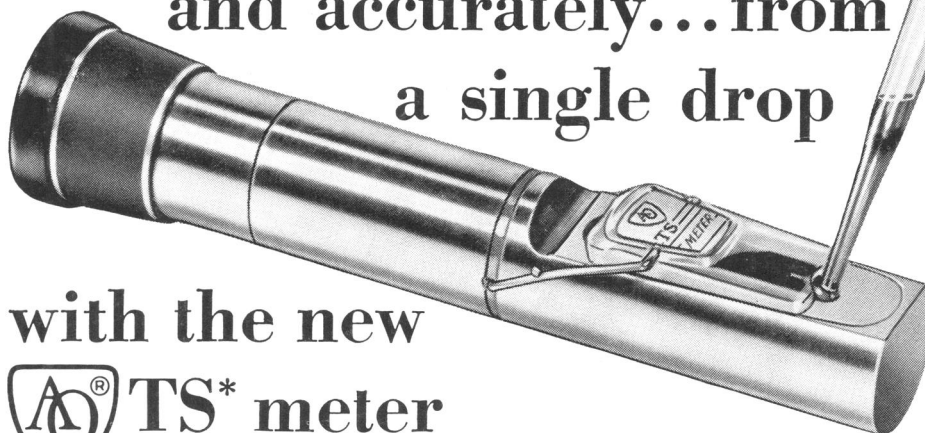
# **FISHER SCIENTIFIC**

*World's Largest Manufacturer-Distributor of Laboratory Appliances & Reagent Chemicals*

Boston • Chicago • Fort Worth • Houston • New York • Odessa, Texas  
Philadelphia • Pittsburgh • St. Louis • Washington • Montreal • Toronto



Serum, Plasma or Urine  
determinations...quickly  
and accurately...from  
a single drop



with the new



TS\* meter

(a Goldberg Refractometer)

**The new AO TS Meter** requires just *one drop* of sample to provide immediate, accurate determinations of total solids, specific gravity, refractive index, protein concentration or water concentration in serum, plasma and urine.

**Minute Sample Required:** As little as 0.02 ml of sample is sufficient for the most precise determination. Minute sample previously reported "q.n.s." now can be read routinely for example, in pediatric urinalysis, in oliguric patients, and in collection from ureteral catheters or microhematocrit tubes.

**Temperature-Compensated for Unsurpassed Accuracy:** The AO TS Meter provides automatic temperature compensation for all aqueous solutions. Differences in room, instrument or sample temperatures do not affect readings. Error from these sources is reduced to less than 0.1% over the range of 65° to 95°F. Readings are consistently obtained with a degree of accu-

racy, speed and reproducibility significantly better than those obtained with urinometers, the falling-drop method or with instruments uncompensated for temperature.

**Direct Readings:** You make an immediate analysis directly from the built-in scale . . . without references to graphs, tables or thermometer readings. Two models are available. Model 10400 provides determinations of total solids in plasma or serum and urine specific gravity; model 10401 gives readings of protein concentration and refractive index.

**\*Total Solids Meter.** The AO TS Meter and this method of analysis was developed in close cooperation with Dr. A. V. Wolf, Head of the Department of Physiology, University of Illinois, College of Medicine, Chicago, Ill.

*Write for complete information!*

American  Optical  
COMPANY

INSTRUMENT DIVISION, BUFFALO 15, NEW YORK

Dept. Y-4

Gentlemen: Please send Brochure SB10400—with complete information about the new AO TS Meter.

Name .....

Address .....

City ..... Zone ..... State .....

IN CANADA write—American Optical Company Canada Ltd., Box 40, Terminal A, Toronto, Ontario

