

IMMUNOCHEMICAL APPROACHES TO PROBLEMS IN MICROBIOLOGY

Edited by Michael Heidelberger and Otto J. Plescia,
Institute of Microbiology, Rutgers, The State University.

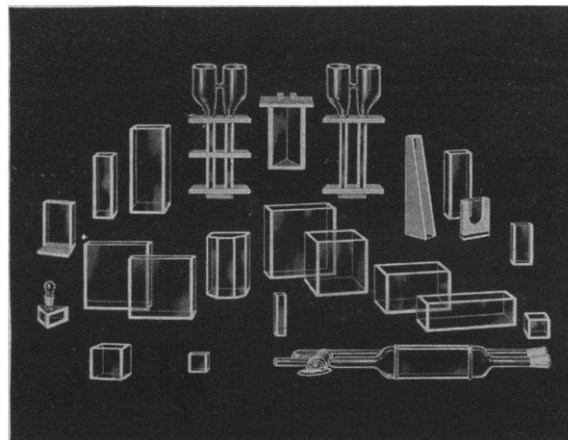
A volume based on a recent Symposium which brought together scientists from different disciplines to consider more effective utilization of immunochemical methods in the further development of microbiology. The papers and discussions by panelists and invited audience cover the topics: Quantitative immunochemical aspects of microbial specificity; precipitation and inhibition techniques, multiplicity and specificity of bacterial antigens, immunochemistry of viruses, so-called non-specific factors in immunity, and biosynthesis of antigens and antibodies.

The panelists were Ö. Ouchterlony, Pierre Grabar, H. G. Kunkel, J. R. Marrack, Paul H. Maurer, E. A. Kabat, J. Baddiley, Maclyn McCarty, James T. Park, D. L. Shrivastava, C. A. Knight, Lawrence Levine, Igor Tamm, Fred Karush, Raymond Latarjet, O. G. Bier, Elmer L. Becker, Otto J. Plescia, Manfred M. Mayer, Irwin H. Lepow, Robert A. Nelson, Jr., Myron A. Leon, Evelyn E. B. Smith, George T. Mills, Brigitte A. Askonas, Felix Haurowitz, G. J. V. Nossal, and O. Mäkelä.

402 pages with illustrations and index. \$6.00

Distributed by Rutgers University Press,
New Brunswick, New Jersey

GLASS ABSORPTION CELLS made by **KLETT**



SCIENTIFIC APPARATUS

Klett-Summerson Photoelectric Colorimeters—
Colorimeters — Nephelometers — Fluorimeters—
Bio-Colorimeters — Comparators — Glass Stand-
ards—Klett Reagents.

Klett Manufacturing Co.

179 East 87 Street, New York, New York

PERSONNEL PLACEMENT

CLASSIFIED: Positions Wanted 25¢ per word, minimum charge \$4. Use of Box Number counts as 10 additional words. Payment in advance is required.

COPY for ads must reach **SCIENCE** 2 weeks before date issue (Friday of every week).

DISPLAY: Positions Open. Rates listed below—no charge for Box Number. Rates net. No agency commission allowed for ads under 4 inches. No cash discount. Minimum ad: 1 inch. Ads over 1 inch will be billed to the nearest quarter inch. Frequency rate will apply to only repeat of same ad. No copy changes. Payment in advance is required except where satisfactory credit has been established.

Single insertion \$40.00 per inch
4 times in 1 year 38.00 per inch

For **PROOFS** on display ads, copy must reach **SCIENCE** 4 weeks before date of issue (Friday of every week).

Replies to blind ads should be addressed as follows:

Box (give number)
Science
1515 Massachusetts Ave., NW
Washington 5, D.C.

POSITIONS WANTED

Clinical Laboratory Director, age 34, graduate degrees bacteriology, strong background clinical chemistry. Seeks position as laboratory director for hospital, research laboratory, or insurance company medical laboratory; 10 years' experience, mostly administrative. Box 195, **SCIENCE**.

Medical-Pharmaceutical Communications. Experienced writer, brochures, FDA submissions, library research. B.A., M.A. sciences. Vicinity New York City—New Jersey. Box 194, **SCIENCE**. X

Microscopist, chemistry degree. Experience includes still and movie photography, photomicrography, electron microscopy, and light microscopy. Box 196, **SCIENCE**. X

POSITIONS OPEN

BONE RESEARCH

B.A. or M.A. graduate to work on problems of bone structure. Opportunities for further degree study in biology.

Dr. Jenifer Jowsey
Albert Einstein Medical Center
Philadelphia 41, Pa.

INSECTICIDE CHEMIST

Required by The West African Cocoa Research Institute at Tafo, Ghana, to conduct studies on insecticides used for controlling pests of the cocoa tree. Appointment will be on contract for two tours of 15-18 months in the first instance.

Salary according to qualifications and experience in scale £1248 a year rising to £2820 a year. Gratuity at rate of £150 a year payable at end of a tour or on final completion of service. Free passages for officer and wife. Assistance towards children's passages or allowance up to £300 per annum if educated in U.K. Liberal leave on full salary. Quarters available at moderate rental.

Candidates must possess a good honours degree in Chemistry and have not less than two years post-graduate training or research experience in Biochemistry, preferably with a bias to Entomology. Women candidates must be single.

Apply to **CROWN AGENTS**, 4 Millbank, London, S.W.1., England for application form and further particulars, stating age, name, brief details of qualifications and experience and quoting reference M3B/53564/SCN.

POSITIONS OPEN

BIOCHEMIST- ANALYST Ph.D.

Creative individual required for newly organized research group. Should have several years' experience in Biochemical & organic research in the field of plant, animal or micro organisms. Must know modern chemical methods of analysis as applied to Drugs, Agriculture Chemicals, etc.

- ... Pleasant suburban environment
- ... Comprehensive benefit program
- ... Salary open—commensurate with ability & experience

Please send complete résumé
to Personnel Dept.

HOFFMANN-LAROCHE INC.

NUTLEY 10, N.J.

POSITIONS OPEN

Effective 1 January 1962

The rates for advertising in the Positions Open section of **Science** will be increased to \$50 per inch.

POSITIONS OPEN

BIOCHEMIST

Ph.D. or equivalent, with strong background in protein chemistry, to pursue basic research of his own interest in the area of protein isolation and characterization, enzyme mechanisms or metabolic pathways. Send complete résumé.

Virginia Institute for Scientific Research
2820 Grove Avenue,
Richmond 21, Virginia

COMPUTER METHODS and POPULATION GENETICS

To carry out studies in human population genetics using computer methods. The position offers an opportunity to participate at an early stage in the development of an essentially new kind of population study using one of the newest and fastest computers in Canada.

Applicants (male or female) with university training and experience in statistics, computer programming, or population genetics preferred. Salary will depend on qualifications. Please include all details in first letter to:

File 9C

The Employment Supervisor
**ATOMIC ENERGY OF
CANADA LIMITED**
Chalk River, Ontario

Newly Established Scientific Positions at Mid-Atlantic Marine Laboratory

PHYSIOLOGIST OR BIOCHEMIST—Ph.D. or equivalent in training and experience in biochemistry and/or cell physiology to participate in program of expanding marine physiology department.

PHYSICAL OCEANOGRAPHER—Ph.D. or equivalent in training and experience in physical oceanography to take part in rapidly growing estuarine and Continental Shelf oceanography. General oceanography with special interest in either chemistry, geology, or physical segments considered. Salaries, \$7680-\$9600 depending on qualifications. Primarily research with some teaching duties in graduate School of Marine Science. **DIRECTOR, VIRGINIA INSTITUTE OF MARINE SCIENCE, VIRGINIA FISHERIES LABORATORY, GLOUCESTER POINT.**

POSTDOCTORAL TRAINEESHIPS IN ENZYME CHEMISTRY are available for 1962-63 at the University of Wisconsin Institute for Enzyme Research in Madison. Applications may be submitted at any time and are invited from candidates who have completed or will shortly complete the requirements for either the Ph.D. or M.D. degree and who are U.S. citizens. The period of traineeship is 12 months (including 1 month's vacation) and may be renewed for additional years. Stipends are \$6000 per year and, in most cases, partially tax-exempt. A travel allowance is provided the trainee from his present institution (if within continental U.S.) to Madison. Application forms and information may be obtained by writing to Dr. David E. Green, Program Director. 11/3

SECRETARY

For office of the Director of medium sized biological research institute in Philadelphia. Must have highly developed, active skills in manuscript editing, letter composition, dictation, typing, and filing. Will be required to edit research papers, prepare letters, and make travel arrangements for various scientists. Prefer English major background. Send résumé to Box 197, SCIENCE.

POSITIONS OPEN

SENIOR BOTANISTS

Required by the West African Cocoa Research Institute at Tafo, Ghana, to take charge of either (A) The Cocoa breeding programme (M3B/53561/SCN) or (B) The research programme on plant nutrition (M3B/53563/SCN). Appointment will be on contract for two tours of 15 to 18 months in the first instance.

Salary £2940 a year. Gratuity at rate of £150 per annum payable on satisfactory completion of a tour or period of engagement. Free passages for officer and wife. Assistance towards children's passages and grant up to £300 per annum if educated in United Kingdom. Liberal leave on full salary. Quarters provided at moderate rental.

Candidates preferably between 35-50 years of age must possess a good honours degree in Botany or Natural Sciences, have a good record of published work, and 15 years' research experience in either (A) Botany or (B) Agronomy or Soil Chemistry or Plant Physiology.

Apply to **CROWN AGENTS, 4 Millbank, London, S.W.1., England**, for application form and further particulars, stating age, name, brief details of qualifications and experience and quoting appropriate reference.

Statistical Engineer • Geoscientist with academic background in mathematical statistics for the position of statistical engineer with exploration company. Location: western United States. At least 2 years of mineral exploration experience and 1 year of additional experience in the application of statistical analysis and/or operations research techniques to exploration problems preferred. Salary commensurate with experience and ability. Please send résumé of experience and training and salary requirements to Box 184, SCIENCE. 10/6

FELLOWSHIPS

Postdoctoral Fellowship in Biochemistry, involving blood proteins, available immediately. \$6000 to begin, partially tax free, no tuition. For further information write to Assistant Director for Education, Office of Education,

The University of Texas
M.D. Anderson Hospital and Tumor
Institute
Texas Medical Center, Houston 25

The Market Place

BOOKS • SERVICES • SUPPLIES • EQUIPMENT

DISPLAY: Insertions must be at least 1 inch in depth. Weekly invoices will be sent on a charge account basis—provided that satisfactory credit is established.

Single insertion	\$48.00 per inch
4 times in 1 year	44.00 per inch
13 times in 1 year	42.00 per inch
26 times in 1 year	40.00 per inch

PROOFS: If copy is to be set, and proofs submitted for approval, complete copy and cuts must be received 4 weeks in advance of publication date (Friday of each week); complete plates no later than 3 weeks in advance of publication date.

PROFESSIONAL SERVICES

CONSULTATION AND RESEARCH SINCE 1922

**Food and
Drug
Research
Laboratories**

Toxicology • Pharmacology
Nutrition • Biochemistry • Bacteriology

BERNARD L. OSE, Ph.D., Director

Maurice Avenue at 58th Street
Maspeth 78, New York City

TWining 4-0800

WHERE EXPERIENCE COUNTS

BOOKS AND MAGAZINES

Your sets and files of scientific journals

are needed by our library and institutional customers. Please send us lists and description of periodical files you are willing to sell at high market prices. Write Dept. A38, CANNER'S, Inc. Boston 20, Massachusetts

SCIENTIFIC JOURNALS WANTED

Sets, Runs and Volumes bought at top prices. Your wants supplied from our Back Files of over 3,000,000 periodicals. Abrahams Magazine Service N. Y. 3, N. Y.

MAMMARY TUMORS IN MICE

AAAS Publication No. 22. By the staff of the National Cancer Institute, National Institutes of Health. F. R. Moulton, Ed.

Published 1945—Now offered at reduced price: \$3.00 prepaid orders by AAAS members, \$3.50 retail. Cloth, 20 tables, 52 illus.

AAAS

1515 Massachusetts Avenue, NW,
Washington 5, D.C.

SUPPLIES AND EQUIPMENT

YOU NEED THIS FREE CATALOG FOR YOUR FILES

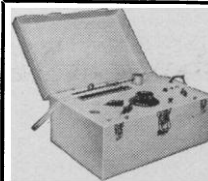
Serums, antisera and bloods of all kinds for technicians and tissue culture laboratories. No salesman will call.

COLORADO SERUM CO.
4950 York St. • MAin 3-5373 • Denver 16, Colo.

RESEARCH ANIMALS, INC.

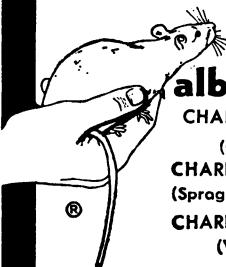
3401 Fifth Avenue Pittsburgh 13, Pa.
Museum 1-4156 Cable: RESEARCH
ALL Laboratory Animals Available
Canine Blood for Heart-Lung Machine by Contract

Overnight delivery ANYWHERE
State Your Needs For Quotations



The Junior Garceau
Electroencephalograph
No Shielding
A.C. Operated
Price \$575.00
**ELECTRO-MEDICAL
LABORATORY, INC.**
South Woodstock 2,
Vermont

"From the hand of the veterinarian
to research."®



albino rats

CHARLES RIVER *CD

(Caesarean derived)

CHARLES RIVER SD

(Sprague-Dawley descendants)

CHARLES RIVER W

(Wistar descendants)

HYPOPHYSECTOMIZED RATS

- Only Charles River CD animals used
- Rigidly controlled environment (same bldg.) birth to surgery.
- High speed surgery by graduate biologists.
- 10 years experience animal surgery.
- Overnight air service from Boston

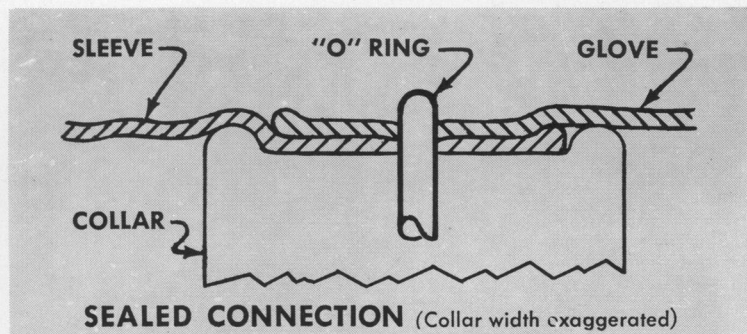
* Trade Mark Reg. U. S. Patent Office

THE CHARLES RIVER BREEDING LABS

1018 Beacon St., Brookline 46, Mass. RE. 4-2000
Henry L. Foster, D.V.M., President

from the originator of Berkeley Box gloves...

a decisive BREAKTHROUGH in the DRY BOX field!



WIL-GARD

Interchangeable Berkeley Box Sleeve and Glove Combination

**Exceptionally
strong
glove-collar-
sleeve
connection
for extra
safety and
security**

Imagine—anyone can use your Berkeley Box facilities without changing sleeves! Work in a controlled atmosphere is now simplified by these new sleeves and interchangeable gloves. Most Wil-Gard industrial gloves up to 11-inches long can be mounted on a special collar attached to the sleeve which remains permanently flanged to the box. Changeover is made in seconds! Pin-holed or contaminated gloves can be quickly interchanged individually without replacing the sleeve—saving you money, time and manpower.

Hand temperature suppressors are molded to the inside surface of each sleeve and provide continuous circulation and change of fresh air, minimizing dew-point fluctuations inside the Berkeley Box.

No matter what you handle—radioactive materials, noble gases, chemical dusts, radioisotopes, reactor fuels, or analytical laboratory tests—this new combination makes a perfect team for your Berkeley Box needs!

**All of these Wil-Gard Industrial Gloves, up to 11-inch,
will fit our "Berkeley Box" Sleeves:**

**NATURAL RUBBER • SOFT-LINED LATEX • UNLINED LATEX • SOFT-
LINED BLACK NEOPRENE • UNLINED BLACK NEOPRENE • UNLINED
WHITE NEOPRENE • BUNA-N**

**Write for free
descriptive literature.**

**SOLD ONLY
THROUGH
DISTRIBUTORS**



PROTECTION FOR THE HANDS OF INDUSTRY • SINCE 1916
WIL-GARD

THE WILSON RUBBER COMPANY INDUSTRIAL DIVISION CANTON 6, OHIO
A Division of Becton, Dickinson and Company • Pacific Coast Warehouse: 530 Howard St., San Francisco 5, California

Wil-Gard and Berkeley Box are Trademarks of The Wilson Rubber Co.

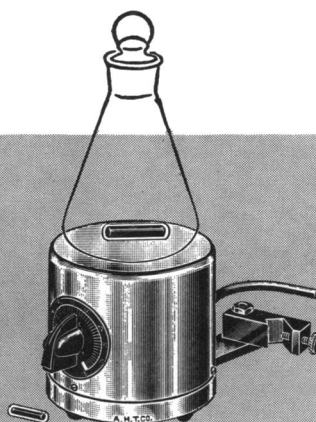
WR-1160-77

Thomas

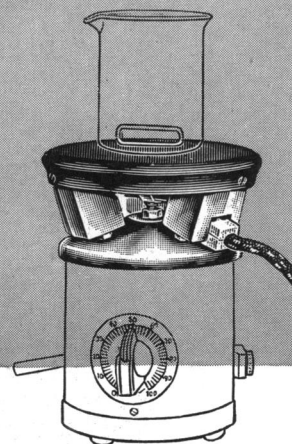
MAGNETIC STIRRER

and

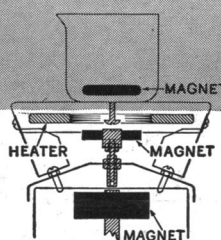
HOT PLATE ATTACHMENT



9235-C.
Magnetic Stirrer



9236-K.
Hot Plate Attachment,
in position on Stirrer



9235-S5.

Cross-section showing
arrangement of magnets

A compact, quiet-running apparatus which utilizes a rotating field of magnetic force to induce variable speed stirring action *within either closed or open vessels*. Dynamically balanced to prevent vibration and "walking."

Stirring is accomplished by means of a small magnetized bar, placed in the liquid to be stirred and rotated by magnetic force consisting of a permanent bar magnet attached to the shaft of an electric motor and mounted in an aluminum housing with flat top $4\frac{3}{8}$ inches diameter and $4\frac{1}{2}$ inches high, on cast metal base.

Can be used either on the table or on a support rod, attached by means of the clamp with swivel joint and swinging arm, an *exclusive feature of the Thomas Stirrer*. Center of stirrer top is adjustable between 3 and $4\frac{1}{2}$ inches from support rod. Stirrer can be easily raised or lowered on the rod, and *swings in or out of position in a horizontal plane*. Particularly convenient in both the mounting and use of closed system assemblies.

Suitable for any stirring operation which involves 1 ml to 1 liter of liquids with viscosities up to that of a 50% glycerol solution.

9235-C. Stirrer, Magnetic, Thomas, with enclosed rheostat. With swing-out clamp, one $\frac{1}{8}$ -inch Kel-F coated stirring bar, one $1\frac{3}{4}$ -inch Pyrex coated stirring bar, 8 ft. 3-wire connecting cord, and directions for use; for 115 volts, 60 cycles, a.c. **38.00**

9235-G. Ditto, without stirring bars. **34.25**

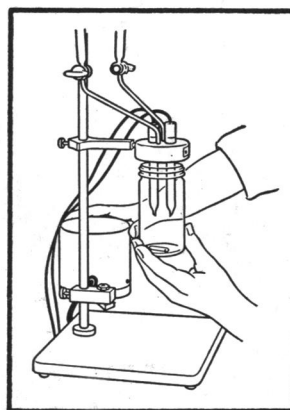
9236-K. Hot Plate Attachment, Thomas Magne-Matic®, 450 watt, with separable Temperature Controller. Heat deflector minimizes heat transfer to motor of stirrer. Black oxidized top plate $5\frac{1}{2}$ inches diameter. Maximum surface temperature 720°F (385°C). Fits over magnetic stirrers $4\frac{3}{8}$ inches diameter. With cord and plug; for 115 volts, a.c. **54.95**

9236-M. Ditto, but without Temperature Controller. **45.00**

9235-S5. Magnetic Stirrer-Hot Plate Combination, consisting of 9235-C Magnetic Stirrer and 9236-K Hot Plate Attachment, complete with separable Temperature Controller. For 115 volts, 60 cycles, a.c. **92.95**
9235-S7. Ditto, without Temperature Controller **83.00**

EXCLUSIVE FEATURE...

swivel clamp with swinging arm



Showing Stirrer only in use in a closed system such as Karl Fischer for determination of water content.

Stirrer swings aside to permit convenient and safe removal of vessel containing sample.

For more detailed information, see pp 900-901 of our new 1961 catalog.



ARTHUR H. THOMAS COMPANY

More and more laboratories rely on Thomas / Laboratory Apparatus and Reagents

VINE ST. AT 3RD • PHILADELPHIA 5, PA.