

Needed Now

Health Physicist:

To direct and perform health physics and industrial hygiene work at various WTR facilities. Work will also include non-health physics engineering that pertains to reactor and hot lab work. Must have A.B. or B.S. degree and additional training in health physics.

If you qualify for any one of the above positions, write immediately to: Mr. C. S. Southard, Westinghouse Atomic Power Division, P.O. Box 355, Dept. X-75, Pittsburgh 30, Pa.

Westinghouse
ATOMIC POWER DIVISION
FIRST IN ATOMIC POWER



**NEW... BRONWILL
INFUSOMETER**

Now . . . 39 reproducible infusion rates with 5 and 50 ml syringes . . . Use up to 6 syringes at the same time! Rate reading window, preset cut-off, back pressure protection. **CONTINUOUS INFUSION** 2-syringe model also . . . simultaneously fills and delivers in reciprocating action.

Literature on request

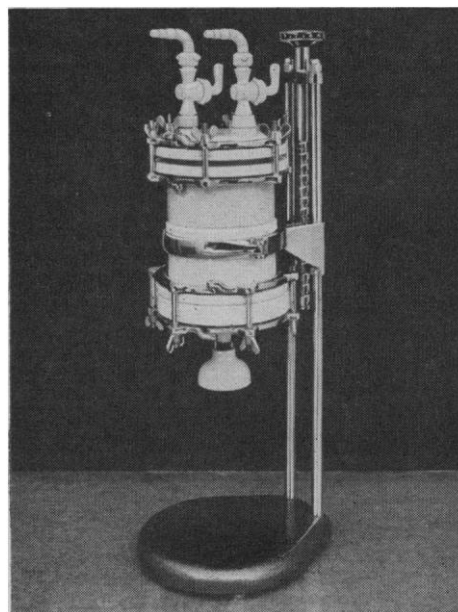
*Specialists in
Scientific Supply*

WILL

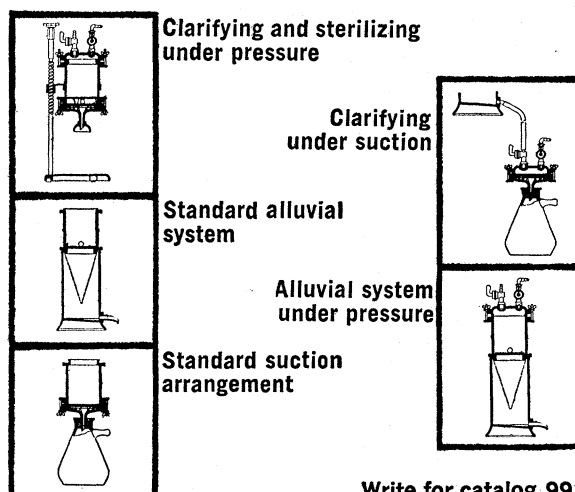
WILL CORPORATION
and subsidiaries

• Rochester 3, N.Y. • New York 52, N.Y. • Buffalo 5, N.Y.
• Atlanta 25, Ga. • Baltimore 24, Md. • So. Charleston 3, W. Va.

IMPORTED HARD PORCELAIN FILTERS



These hard porcelain filters have been developed for bacteriological and other filtration problems in the chemical/pharmaceutical laboratory. The glazed porcelain construction facilitates cleaning and is particularly useful for work with metal-attacking or metal-sensitive materials. Acids in concentrated form have no effect on this porcelain. Multi-purpose design permits universal application to a variety of problems. Five different arrangements for operation under pressure or suction; five versatile assemblies from a single basic system.



Write for catalog 99 FR 1.

BRINKMANN
INSTRUMENTS, INC.

115 Cutter Mill Road, Great Neck, N.Y.

Philadelphia • Cleveland • Houston • Miami • Menlo Park, Cal.

New Products

The information reported here is obtained from manufacturers and from other sources considered to be reliable. Neither Science nor the writer assumes responsibility for the accuracy of the information. All inquiries concerning items listed should be addressed to the manufacturer. Include the department number in your inquiry.

■ **OSCILLOSCOPE CAMERA** uses any of eight interchangeable lenses in varying object-to-image ratios with maximum aperture to $f/1.5$; the lenses are housed in uniform, prefocused, calibrated mounts with keyed positioning threads. A sliding back permits interchange of par-focal film-holding backs, which lock in five detent positions, and rotation through 90° increments. The camera accepts Polaroid or conventional film. (Tektronix, Inc., Dept. Sci150, P.O. Box 500, Beaverton, Ore.)

■ **VARIABLE-FREQUENCY GENERATOR** for ultrasonic studies covers the frequency range 1 to 100 kcy/sec with output up to 2 Mcy/sec available on special order. Power output is continuously variable from 0 to 2000 watts at frequencies to 50 kcy/sec and from 0 to 1200 watts up to 100 kcy/sec. The standard unit has a choice of ten impedances from 3 to 200 ohms. (International Ultrasonics Inc., Dept. Sci141, 1697 Elizabeth Ave., Rahway, N.J.)

■ **BLOOD PRESSURE APPARATUS** measures the systolic pressure at the ophthalmic artery. The pulse pickup device of the apparatus is fitted into both eyepieces of a pair of goggles that form an airtight compartment around each eye socket. The pickup utilizes the manufacturer's ionization transducer to convert pressure changes of the ophthalmic artery into audible sounds. Air pressure is introduced into the compartment covering the eye until the pulse sound ceases and systolic pressure is read on a standard pressure gage. (Decker Corp., Dept. Sci143, 45 Monument Rd., Bala Cynwyd, Pa.)

■ **OXYGEN ANALYZER** measures traces of oxygen in other gases by means of an electrolytic cell. The electrolyte is contained in a plastic block in which the cathode, a noble metal gauze, is suspended. When the sample of gas is circulated in the cavity above the electrolyte, a small voltage is developed through a network to a recorder which reads in parts per million of oxygen. Traces of oxygen as low as 0.3 part per million are said to be measurable; response time is less than 1 minute for 90 percent change. Readings are independent of the nature of the majority gas. (Thermco Instrument Corp., Dept. Sci140, U.S. 20, LaPorte, Ind.)

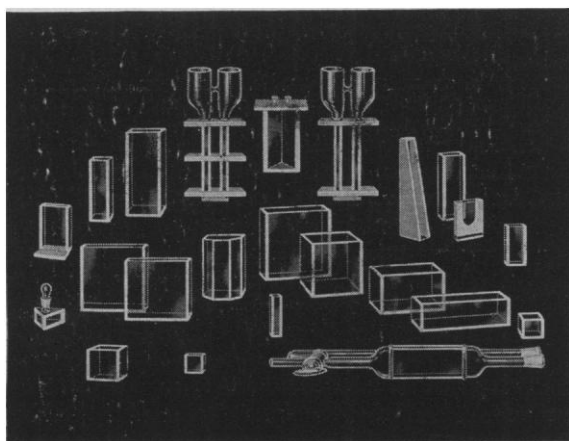
■ **DUAL CENTRIFUGE** features a fixed satellite table mounted on a large turntable and so arranged that the absolute angular velocity of the small satellite turntable is controlled independently. Test objects can be subjected to an acceleration field while they rotate about a vertical axis transverse to the field. An additional satellite turntable is provided in order to achieve balance. The independent variable drive on the satellite turntable permits a sinusoidal variation in acceleration forces and may be adjusted to any speed regardless of the rotational speed of the main table. Steady acceleration range is 0 to 100 grav; range of sinusoidal frequencies is 0 to 30 per second. An electronic counter and tachometers are provided for control and measurement. Design accuracy is ± 1 count representing $\pm 1/600$ or $\pm 1/60$ of a revolution for the main and satellite tables, respectively. Rated load is 2.5 lb for the satellite table and 5 lb for the main table. The main and auxiliary spindles are connected to external equipment through a series of 24 slip rings and brush assemblies. (Schaevitz Engineering, Dept. Sci151, Rt. 130 at Schaevitz Blvd., Pennsauken, N.J.)

JOSHUA STERN
National Bureau of Standards,
Washington, D.C.

GLASS ABSORPTION CELLS

made
by

KLETT



SCIENTIFIC APPARATUS

Klett-Summerson Photoelectric Colorimeters—
Colorimeters—Nephelometers—Fluorimeters—
Bio-Colorimeters—Comparators—Glass Standards—Klett Reagents.

Klett Manufacturing Co.
179 East 87 Street, New York, New York

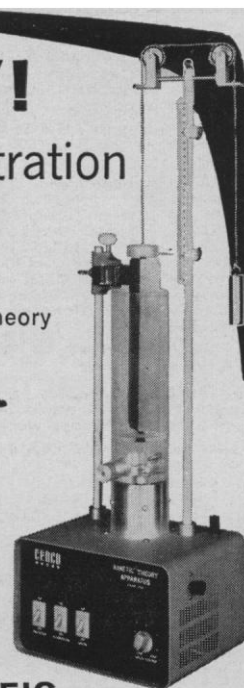
NOW!

Easy Demonstration of basic Gas Laws

**CENCO Kinetic Theory
Apparatus**

Permits quantitative determination of the most fundamental principles of gas mechanics. Adapted from a design by H.F. Meiners of Rensselaer Polytechnic Institute. Plot p-V and p-T curves; measure molecular diameters; verify the fundamental gas laws and Van der Waals Corrections

No. 77722 \$295.00



CENTRAL SCIENTIFIC

A Division of Cenco Instruments Corporation
1718-M Irving Park Road • Chicago 13, Ill.
Mountainside, N. J. Montreal Santa Clara
Somerville, Mass. Toronto Los Angeles
Birmingham, Ala. Ottawa Vancouver Houston
Cenco S.A., Breda, The Netherlands Tulsa

cenco

NO lost experiments with

MICROSCOPIC SLIDE LABELING



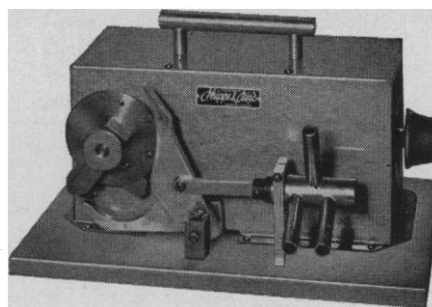
Eliminate guesswork . . . greasemark mistakes. Get positive identification. Simply pull tab and a fresh, clean label "pops" out. Fast, self-sticking labels dispensed one at a time. Available in standard or "tissue-high" thickness. They accept pen, pencil, ball point pen or typewriter marking. 1000 labels per carton.



Write for detailed information and the name of your nearest TIME distributor.

PROFESSIONAL TAPE CO., INC.
360 Burlington Ave. • Riverside, Ill.

PHIPPS & BIRD PULMOTOR VARI-PHASE VALVE



For Controlling Artificial Respiration

For use with compressed air in controlling artificial respiration.

Control of one knob facilitates respiration rates of 15 to 50 per minute. Time ratio may be set to any value between 1:4 to 4:1.

Removes for easy cleaning and sterilizing.

CAT. NO. 71-216

PHIPPS & BIRD, INC.

Manufacturers & Distributors of Scientific Equipment



6th & Byrd Streets - Richmond, Va.

PERSONNEL PLACEMENT

CLASSIFIED: Positions Wanted, 25c per word, minimum charge \$4. Use of Box Number counts as 10 additional words. Payment in advance is required.

COPY for ads must reach **SCIENCE** 2 weeks before date of issue (Friday of every week).

DISPLAY: Positions Open. Rates listed below—no charge for Box Number. Rates net. No agency commission. No cash discount. Minimum ad: 1 inch. Ads over 1 inch will be billed to the nearest quarter inch. Frequency rate will apply to only repeat of same ad. No copy changes. Payment in advance is required except where satisfactory credit has been established.

Single insertion \$40.00 per inch
4 times in 1 year 38.00 per inch

For PROOFS on display ads, copy must reach **SCIENCE** 4 weeks before date of issue (Friday of every week).

Replies to blind ads should be addressed as follows:

Box (give number)
Science
1515 Massachusetts Ave., NW
Washington 5, D.C.

POSITIONS WANTED

Biochemist, Ph.D. Several years of hospital experience, research, publications. Clinical appointment with research facilities. Preferred location: Pacific Southwest. Box 80, **SCIENCE**. 4/14

Biologist will translate Chinese. \$15-\$20 per 1000 words. Box 75, **SCIENCE**. 4/7

Clinical Chemist interested as department chairman in progressive hospital; South preferred. Box 79, **SCIENCE**. X

Pathologist, graduate veterinarian, M.S.; Ph.D., July 1961; teaching and research experience. Desires research position; relocate available August 1961. Box 81, **SCIENCE**. X

POSITIONS WANTED

(a) **Biochemistry** Ph.D., pharmacy minor; experienced in radioisotope techniques, cancer and hematology research, pharmaceutical development with clinical research programs; interested in drug development and clinical research directorship appointment. (b) **Zoology (Endocrinology)** Ph.D., chemistry, physiology minors; desires academic or research opportunity. S4-1 Medical Bureau, Inc., Science Division, Burnside Larson, Chairman, 900 North Michigan Avenue, Chicago. X

POSITIONS OPEN

MONASH UNIVERSITY Clayton, Victoria, Australia

Applications are invited for the posts of **Vertebrate Palaeontologist and Ethologist** in the Department of Zoology. The head of the department is Professor A. J. Marshall, D.Phil., D.Sc. *Oxon*. The appointments will be made at either lectureship or senior lectureship level, depending on the status of the successful applicants. Both posts offer special opportunities for field work. The successful applicant in each case must be capable of giving an honors course and supervising research students in his subject. He would begin duties at some time before March 1962.

Salary scales: Senior lecturer, £A2480/100/- 2950; lecturer, £A1660/100/2360; with provision for superannuation on the FSSU basis. The initial salary will depend on successful candidate's qualifications and experience.

General conditions of appointment (including details of the provisions made for traveling expenses, housing, and so forth) may be had from the Registrar of the university, or from the Secretary, A.U.B.C. (address below). Other information may be had from Professor Marshall.

Applications in duplicate, and giving the information listed in the general conditions of appointment, should be lodged with the Registrar of the University not later than 17 May 1961. An applicant resident elsewhere than in Australia or New Zealand should also send one copy of his application to the Secretary, A.U.B.C., 36 Gordon Square, London, W.C.1. X

POSITIONS OPEN

CLINICAL RESEARCH

Rapidly expanding, research based ethical pharmaceutical company located in the San Fernando Valley section of Los Angeles has an unusual opportunity for a scientist trained in medicine, pharmacology, physiology, or biostatistics. This position requires the ability to meet physicians and to set up carefully controlled clinical trials of promising new products. Salary and title commensurate with training and experience. Live near your work in the beautiful residential areas adjacent to our new research and manufacturing facilities. Excellent benefit program plus profit sharing. Contact John Permantier, Personnel Manager

Riker Laboratories, Inc.
Northridge, Calif.

EDITORIAL ASSISTANT FOR SCIENTIFIC JOURNAL

To help determine acceptability of papers, with aid of journal's scientific advisers. Also to edit manuscripts. Scientific background necessary. Editorial experience helpful. Salary open. Washington, D.C., location.

Box 61, **SCIENCE**

RESEARCH ASSISTANTS MALE OR FEMALE

M.S. or B.S. Chemistry or biochemistry. Prefer some experience. Many challenging projects in enzymology, immunology, psychiatric research, tissue culture, cardiovascular studies. Contact Personnel.

N.Y.U. MEDICAL CENTER
420 East 34 St., N.Y.C.

POSITIONS OPEN

(a) **Assistant Technical Manager** of foreign division of dairy products firm able to combine biochemistry technical duties with customer service aspects; around \$8400; East. (b) **Organic Chemist** experienced in natural products synthesis and with group leadership abilities for new unit of established firm; around \$12,000; Midwest. (c) **Research Scientists** to study basic effects of radiation in living systems of various types at atomic energy institute; foreign. (d) **Research Director** with R&D pharmaceutical experience and leadership qualifications to organize program for drug firm; \$15,000-\$18,000; Midwest. (e) **Zoology Assistant Professor** to teach endocrinology and allied subjects and develop graduate research program at state university; \$7000-\$8000; Midwest. (f) **Editor** experienced in scientific or medical writing and qualified to effectively direct activities for group of writers and communication scientists for leading pharmaceutical firm; East. (g) **Bacteriologist** to head division of hospital expanding to 450 beds with excellent facilities; \$8500 up; Midwest. (h) **Biochemistry, Physiology Faculty Appointments** at expanding college to teach and develop research programs; all levels from instructor to professor, \$5000-\$12,000; Midwest. (i) **Cancer Research Scientist** experienced in tissue culture and virology, genetics, cell biology, or immunochemistry for medical school; South. (j) **Research Associate** biochemically oriented and trained in biology, zoology, or physiology for studies on enzymology and metabolism of mucopolysaccharides at medical school; Midwest. (k) **Clinical Scientist** qualified in immunology, hematology, and blood banking for university hospital; high salary; Southwest. S4-1 Medical Bureau, Inc., Science Division, Burnice Larson, Chairman, 900 North Michigan Ave., Chicago. **BEST SOURCE FOR THE BEST MEDICAL-SCIENTIFIC POSITIONS.**

BIOCHEMIST

Interested in immunology or immunologist to head research in hypersensitivity. University association, is desired. Salary \$8500-\$11,000. Contact Director Professional Services, Attention: Chief, Allergy Service,

Veterans Administration Hospital
University Drive, Pittsburgh 40, Pa.

Histochemist, Enzyme Chemist

Ph.D. or equivalent, quantitative enzymatic microhistochemistry of brain and/or pancreas. Research institute, New York.

Box 78, SCIENCE

RESEARCH ASSISTANT

B.S. or M.S., trained in bacteriology, immunology, and/or tissue culture. Full time. Original research at Ohio State University. Give full personal information, salary desired, recent photo.

Box 82, SCIENCE

STATISTICIAN

An expanding Midwest pharmaceutical company has an opportunity for a statistician with a Ph.D. or equivalent training. Nonroutine and varied work in theoretical and applied statistics including design and analysis of biological experiments and clinical trials. Independent and creative work required. Small computer facilities at hand; large computer available. Liberal publication policy. Please send complete résumé to

TECHNICAL EMPLOYMENT
COORDINATOR
UPJOHN COMPANY
KALAMAZOO, MICH.

TWO INSTRUCTORSHIPS IN ZOOLOGY. Ph.D. degree or with all course work completed. Teaching experience preferred. **Position 1:** Embryology, anatomy, general biology, and possibly physiology. **Position 2:** Ornithology, mammology, conservation, general biology, and possibly physiology. Also: Associate Professorship; Ph.D. degree and teaching experience. Astronomy-meteorology and structural geology. Initial salary \$5500-\$6000. Write F. Reese Nevin, Chairman, Department of Science and Mathematics, State University College of Education, Plattsburgh, N.Y. 4/14

FELLOWSHIPS

Predocloral and Postdoctoral Fellowships in Medical Physics. Opportunities to do graduate work in the basic medical sciences and in their application to clinical problems. Emphasis is on the fields of radiation biology, radiation physics, and the clinical use of radioisotopes. Study programs leading to the M.S. and Ph.D. degrees and postdoctoral research supported by fellowships. Stipends vary with training and dependents. Write to Chairman, Department of Radiology, Medical Center, University of California, Los Angeles 24. 3/3; 4/7

The Market Place

BOOKS • SERVICES • SUPPLIES • EQUIPMENT

DISPLAY: Insertions must be at least 1 inch in depth. Weekly invoices will be sent on a charge account basis—provided that satisfactory credit is established.

Single insertion	\$40.00 per inch
4 times in 1 year	38.00 per inch
7 times in 1 year	36.00 per inch
13 times in 1 year	34.00 per inch
26 times in 1 year	34.00 per inch
52 times in 1 year	32.00 per inch

For PROOFS on display ads, copy must reach SCIENCE 4 weeks before date of issue (Friday of every week).

PROFESSIONAL SERVICES

ANALYTICAL SERVICES

Amino Acid Analysis of proteins, physiological fluids, peptides, foods, and tissue extracts by the Spackman, Moore, Stein ion-exchange method, using the latest model Beckman-Spinco Analyzer.

Infrared Spectroscopy using the Beckman IR-4 spectrophotometer.

Fluorometric Methods with the American Instrument spectrophotofluorometer.

Gas Chromatography with the Beckman GC-2

Rates and other details available.

RIVERTON LABORATORIES, INC.

852 Clinton Avenue
Newark 8, New Jersey
Essex 4-9550 - Whitehall 4-5584.



NEW AAAS SYMPOSIUM VOLUMES

CALCIFICATION IN BIOLOGICAL SYSTEMS

Edited by R. F. Sognnaes,

526 pages with 283 illustrations, references, and index; \$9.75
\$8.50 cash orders from AAAS members

CONGENITAL HEART DISEASE

Edited by Allan D. Bass & Gordon K. Moe,
372 pages with 147 illustrations, references, and index; \$7.50
\$6.50 cash orders from AAAS members

Order today from

AAAS

1515 Massachusetts Ave., NW
Washington 5, D.C.

PROFESSIONAL SERVICES

BIOLOGICAL SERVICES

Foods, Drugs, Cosmetics, Chemicals, Feeds, Packaging—Toxicological, Mycological and Bacteriological Investigations



United States Testing Co., Inc.

1415 Park Ave., Hoboken, N. J.

BOOKS AND MAGAZINES

Your sets and files of scientific journals

are needed by our library and institutional customers. Please send us lists and description of periodical files you are willing to sell at high market prices. Write Dept. A3S, CANNER'S, Inc. Boston 20, Massachusetts

SCIENTIFIC JOURNALS WANTED

Sets, Runs and Volumes bought at top prices. Your wants supplied from our Back Files of over 3,000,000 periodicals. Abrahams Magazine Service N. Y. 3, N. Y.

SUPPLIES AND EQUIPMENT

YOU NEED THIS FREE CATALOG FOR YOUR FILES

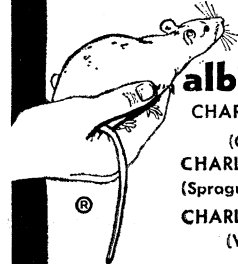
Serums, antisera and bloods of all kinds for technicians and tissue culture laboratories. No salesman will call.

COLORADO SERUM CO.

4950 York St. • MAIN 3-5373 • Denver 16, Colo.



"From the hand of the veterinarian
to research"®



albino rats

CHARLES RIVER *CD

(Caesarean derived)

CHARLES RIVER SD

(Sprague-Dawley descendants)

CHARLES RIVER W

(Wistar descendants)

HYPOPHYSECTOMIZED RATS

- Only Charles River CD animals used
- Rigidly controlled environment (same bldg.) birth to surgery.
- High speed surgery by graduate biologists.
- 10 years experience animal surgery.
- Overnight air service from Boston

* Trademark

THE CHARLES RIVER BREEDING LABS

1018 Beacon St., Brookline 46, Mass. RE. 4-2000

Henry L. Foster, D.V.M., President

1919 - 1961

LaMotte Chemical
Chestertown, Maryland, U.S.A.

Specialists in

Colorimetric Techniques

Reagents-Standards-Comparators

Send for Illustrated

Controls Handbook

Dept. H

DIRT C-14

and other tagged compounds
of HIGH RADIO-PURITY

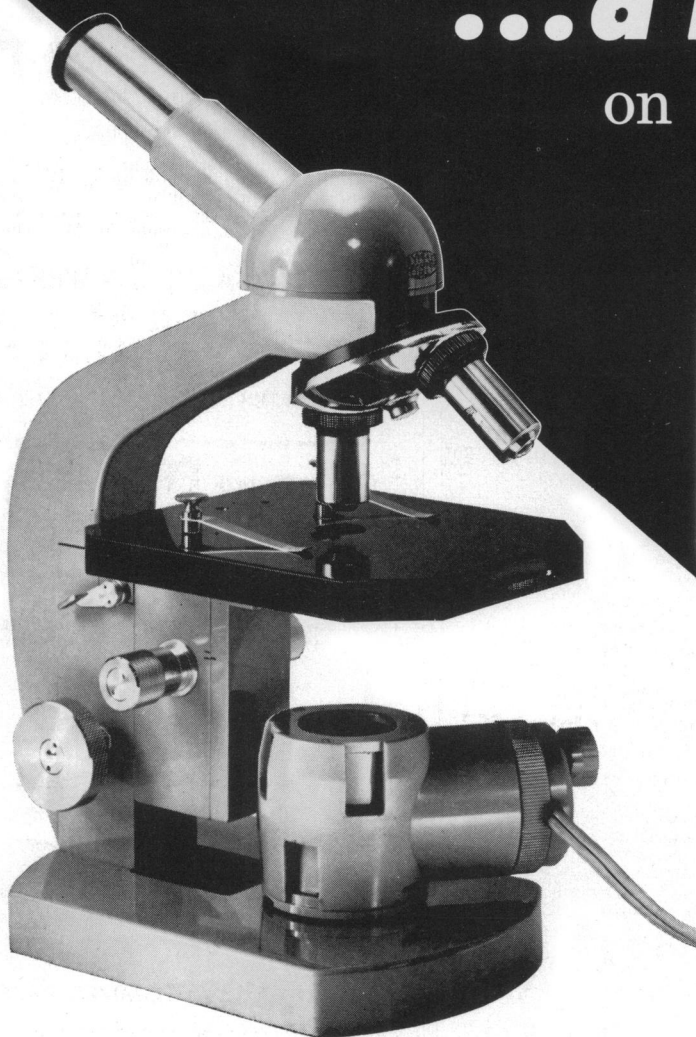
ISOTOPES SPECIALTIES CO.

Box 688

Burbank, Calif.

Elgeet of Rochester...Presents:

...a new slant on Student-Teaching microscopes



Elgeet-OLYMPUS Model S-2

only
\$99.45
in lots of five

list price \$110.50 each

Pictured standard model S-2 with double revolving nosepiece with hard-coated parfocal, achromatic interchangeable $10\times$ (N.A. .25) and $40\times$ (N.A. .65) objectives. Built-in revolving aperture disk to control illumination. $10\times$ Huygenian coated lens eyepiece. Choice of concave mirror or interchangeable 20 watt illuminator (Model LSK) as shown.

Write for information on other student-teaching models and complete microscope line.

Science means progress, and to help both teachers and students meet the challenge of a changing world, Elgeet presents a superb new microscope with research instrument features never before offered in student-teaching models!

The inclined eyepiece is typical of the many new features, extending to students the benefits of unsurpassed convenience, ease of operation, and efficiency combined with working comfort, resulting in maximum learning possibilities even over prolonged periods of close concentration.

Rugged and versatile, the Elgeet-Olympus is precision engineered and designed for years of trouble-free service and priced for educators seeking the very best . . . on a budget.

MAIL COUPON NOW

Dept. S-4
Elgeet Optical Co., Inc., Scientific
Instrument and Apparatus Div., 838
Smith Street, Rochester 6, New York.

☐ Please send me complete literature on the New Elgeet-Olympus Microscopes.

☐ Please send name of Elgeet Dealer nearest me for free demonstration.

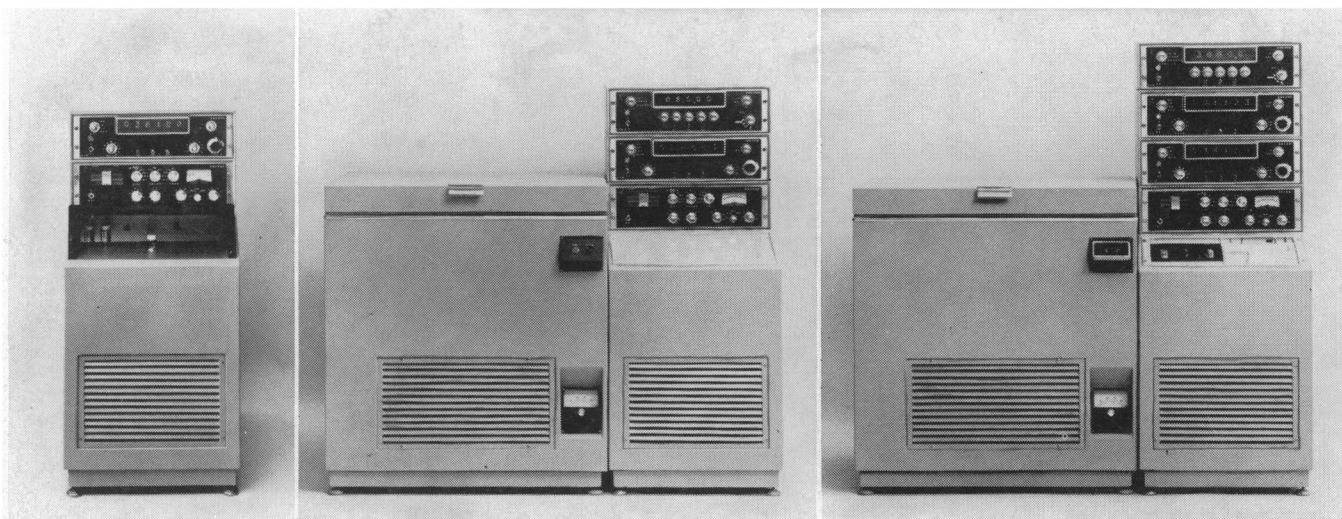
Name

Address

City State

Elgeet OPTICAL CO., INC. . . . SCIENTIFIC INSTRUMENT AND APPARATUS DIVISION
838 SMITH STREET • ROCHESTER 6, NEW YORK

"Quality is our watchword . . . Precision Engineering our constant goal."



1.
Start here for economical,
room-temperature counting
of C^{14} and H^3

Model 701
manual operation,
shown with 8250 scaler

2.
Add cooling for increased
efficiency and precision
Model 702
manual, temperature controlled operation,
shown with 8250 scaler and 8600 timer

3.
Incorporate automatic sample
changing as work load grows
Model 703
automatic, temperature controlled operation,
shown with two 8250 scalars, 8600 timer,
and 8401 digital recorder

New from Nuclear-Chicago... a family of liquid scintillation counting systems

Model 701 is the low-priced basic system for workers interested mainly in counting limited numbers of samples. Carbon-14 is counted with high efficiency and tritium with somewhat reduced efficiency. Model 701 includes components common to all three systems: uniquely sensitive optical cell and dual-detector assembly, high-speed two-channel pulse-height analyzer, ultra-fast coincidence circuit, and stabilized high-voltage supply. Output signals from this solid-state circuitry are shaped pulses which can feed any standard scaling instrument. From this point, your research needs and budget will guide your choice of options, now and in the future.

In **Model 702**, the dual-detector assembly is mounted in a custom-built, precision-controlled, low-temperature chamber permitting highest counting efficiency for carbon-14 and tritium. Field conversion to fully automatic operation requires only addition of the sample changer mechanism.

Model 703's simple and foolproof sample changer, its sophisticated options of data presentation, and its versatile modes of automatic operation suggest it as the system of choice for laboratories counting many samples.

One of the three new models in this first family of liquid scintillation counting systems is suited to your present research needs and to your expanding programs of investigation.

Prices for these integrated, compact and functionally elegant systems range from \$5,000 through \$15,000. Please write for full information.



349 EAST HOWARD AVENUE, DES PLAINES, ILLINOIS