

AAAS Officers, Committees, and Representatives for 1961

The following persons are serving as officers, as members of the indicated committees, and as representatives to other organizations for the year 1961. The dates in parentheses indicate the year of expiration of terms of election or appointment.

General Officers

Retiring President and Chairman of the Board of Directors: Chauncey D. Leake (1961), Ohio State University
President: Thomas Park (1962), University of Chicago
President-Elect: Paul M. Gross (1963), Duke University

Other Members of the Board of Directors

Harrison Brown (1963), California Institute of Technology
Henry Eyring (1961), University of Utah
H. Bentley Glass (1962), Johns Hopkins University
Margaret Mead (1962), American Museum of Natural History
Don K. Price (1964), Harvard University
Alfred S. Romer (1963), Harvard University
William W. Rubey (1961), University of California, Los Angeles
Paul A. Scherer (ex officio), Research Corporation
Alan T. Waterman (1964), National Science Foundation
Dael Wolffe (ex officio), AAAS

Vice Presidents and Chairmen of the Sections

Mathematics: J. L. Walsh, Widener Library, Cambridge

Physics: Henry D. Smyth, Princeton University

Chemistry: Essie White Cohn, University of Denver

Astronomy: Robert M. Petrie, Dominion Astrophysical Observatory, Royal Oak, B.C., Canada

Geology and Geography: Richard J. Russell, Louisiana State University

Zoological Sciences: Jack Schultz, Institute for Cancer Research, Philadelphia

Botanical Sciences: James F. Bonner, California Institute of Technology

Anthropology: Jesse D. Jennings, Northwestern University

Psychology: Carl Pfaffmann, Brown University

Social and Economic Sciences: Frederick F. Stephan, Princeton University

History and Philosophy of Science: N. Russell Hanson, University of Indiana

Engineering: C. E. Davies, United Engineering Center Project, New York

Medical Sciences: John B. Youmans, American Medical Association



Alan T. Waterman

Dentistry: Harold J. Noyes, University of Oregon

Pharmacy: Joseph A. Oddis, American Pharmaceutical Association, Washington, D.C.

Agriculture: Wynne Thorne, Utah Agriculture Extension Station, Logan

Education: William H. Bristow, New York, N.Y.

Administrative Officers

Executive Officer: Dael Wolffe

Treasurer: Paul A. Scherer

Associate Administrative Secretary: Raymond L. Taylor

Editor: Graham DuShane

Business Manager: Hans Nussbaum

Director of Education: John R. Mayor

Director, Science Library Program: Hilary J. Deason

Director of studies on the public understanding of science: Edward G. Sherburne, Jr.

Secretaries of the Sections

Mathematics: Wallace Givens (1964), Northwestern University

Physics: Stanley S. Ballard (1963), University of Florida

Chemistry: S. L. Meisel (1964), Socony Mobil Oil Company

Astronomy: Frank Bradshaw Wood (1961), University of Pennsylvania

Geology and Geography: Richard H. Mahard (1964), Denison University

Zoological Sciences: George Wharton (1961), University of Maryland

Botanical Sciences: Harriet B. Creighton (1963), Wellesley College

Anthropology: James L. Giddings (1961), Brown University

Psychology: Frank W. Finger (1963), University of Virginia

Social and Economic Sciences: Donald P. Ray (1962), George Washington University

History and Philosophy of Science: John W. Streeter (1961), Chester Springs, Pa.

Engineering: Leroy K. Wheelock (1964), Engineers Joint Council, New York, N.Y.

Medical Sciences: Oscar Touster (1964), Vanderbilt University School of Medicine

Dentistry: Reidar F. Sognnaes (1962), Harvard School of Dental Medicine, Boston

Pharmacy: John E. Christian (1962), Purdue University School of Pharmacy
 Agriculture: Howard B. Sprague (1961), Pennsylvania State University
 Industrial Science: Allen T. Bonnell (1964), Drexel Institute of Technology, Philadelphia

Education: Herbert A. Smith (1963), University of Kansas

Officers of the Alaska Division

President: John P. Hannon, Arctic Aeromedical Laboratory, Ft. Wainwright

Vice President: Rachel S. Simmet, Arctic Health Research Center, Anchorage

Secretary: Eleanor G. Viereck, University of Alaska, College

Treasurer: Anne Sosnkowski, Alaska Historical Museum, Juneau

Executive Secretary: George Dahlgren, Jr., University of Alaska, College

Council Representative: Victor P. Hessler, Geophysical Institute, College

Officers of the Pacific Division

President: W. A. Clemens, University of British Columbia

President-Elect: Melvin Calvin, University of California, Berkeley

Retiring President: Henry P. Hansen, Oregon State College

Secretary: Robert C. Miller, California Academy of Sciences

Council Representative: Robert C. Miller

Officers of the Southwestern and Rocky Mountain Division

President: Alan T. Wager, Arizona State University

President-Elect: Anton H. Berkman, Texas Western College

Secretary: Marlowe G. Anderson, New Mexico State University

Council Representative: Marlowe G. Anderson

Editorial Board

Graham DuShane, AAAS, chairman
 Konrad B. Krauskopf (1963), Stanford University

Edwin M. Lerner (1964), National Institutes of Health

Philip M. Morse (1965), Massachusetts Institute of Technology
 H. Burr Steinbach (1963), University of Chicago

William L. Straus, Jr. (1963), Johns Hopkins Medical School

Edward L. Tatum (1962), Rockefeller Institute

Standing Committees

AAAS Cooperative Committee on the Teaching of Science and Mathematics
 Thornton L. Page, Wesleyan University, chairman

Wayne Taylor, Michigan State University, vice-chairman

Bernard B. Watson, Operations Research Office, Johns Hopkins University, secretary

C. L. Agre, Augsburg College

J. W. Buchta, University of Minnesota

John W. Cell, North Carolina State College

Malcolm Correll, De Pauw University

H. S. Fowler, Pennsylvania State University

Alfred B. Garrett, Ohio State University

Arthur L. Howland, Northwestern University

Phillip S. Jones, University of Michigan

Robert T. Lagemann, Vanderbilt University

Ralph Lefler, Purdue University

Harry F. Lewis, Institute of Paper Chemistry, Appleton, Wis.

George G. Mallinson, Western Michigan University

John R. Mayor, AAAS

Bruce E. Meserve, Montclair State College

Fred H. Norris, University of Tennessee

W. E. Restemeyer, University of Cincinnati

Emery L. Will, State University Teachers College, Oneonta, N.Y.

Theodore Woodward, U.S. Department of Agriculture, Washington, D.C.

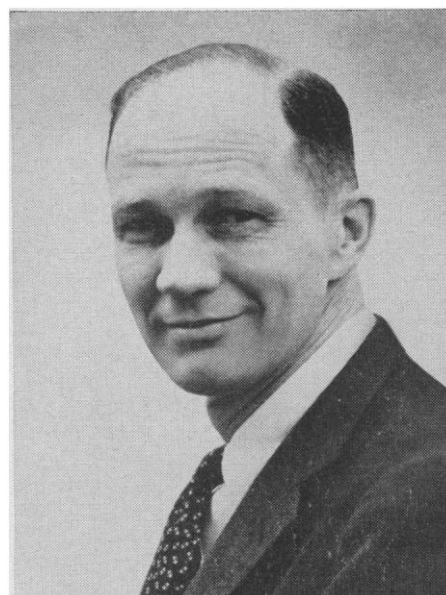
Dael Wolfle, AAAS, ex officio

AAAS Meetings

Allen T. Bonnell (1962), Drexel Institute of Technology, chairman

Horace R. Byers (1963), University of Chicago

Stanley A. Cain (1962), University of Michigan



Don K. Price

Frank Fremont-Smith (1962), AIBS Interdisciplinary Conference Program, New York, N.Y.

William C. Steere (1961), New York Botanical Garden

John R. Bowman, Northwestern University, ex officio

Barry Commoner, Washington University, ex officio

Warren Weaver, Alfred P. Sloan Foundation, ex officio

Dael Wolfle, AAAS, ex officio

Raymond L. Taylor, AAAS, staff representative

Affiliation

I. Melville Stein (1962), Leeds and Northrup Company, chairman

Earl L. Green (1961), Roscoe B. Jackson Memorial Laboratory

Luna B. Leopold (1965), U.S. Geological Survey

Rensis Likert (1964), University of Michigan

Paul B. Sears (1963), Yale University

Dael Wolfle, AAAS, ex officio

Raymond L. Taylor, AAAS, staff representative

Cooperation among Scientists

John R. Bowman (1961), Northwestern University, chairman

Burton W. Adkinson (1963), National Science Foundation

Richard T. Arnold (1962), Mead Johnson and Company, Evansville

Frank Fremont-Smith (1965), AIBS Interdisciplinary Conference Program, New York, N.Y.



Henry Eyring

R. E. Gibson (1964), Johns Hopkins University Applied Physics Laboratory
H. Bentley Glass, Johns Hopkins University, ex officio, Board representative

Dael Wolfle, AAAS, ex officio

Council Affairs

Paul M. Gross (1961), Duke University, chairman, ex officio

Allan D. Bass (1963), Vanderbilt University School of Medicine

Stanley A. Cain (1961), University of Michigan

Barry Commoner (1962), Washington University

Alfred E. Emerson (1962), University of Chicago

Charles B. Hitchcock (1962), American Geographical Society, New York

Kenneth C. Spengler (1961), American Meteorological Society, Boston, Mass.

Warren Weaver (1963), Alfred P. Sloan Foundation

William A. Wildhack (1963), National Bureau of Standards

Frank Bradshaw Wood (1961), University of Pennsylvania

Dael Wolfle, AAAS, secretary, ex officio

Executive Committee of the Board of Directors

Chauncey D. Leake, chairman

Paul M. Gross

Thomas Park

Paul A. Scherer

Alan T. Waterman

Dael Wolfle

Investment and Finance

F. P. H. Siddons (1962), American Security and Trust Company, Washington, D.C., chairman

Sheldon B. Akers (1961), Brookings Institution, vice chairman

Wallace R. Brode (1964), Washington, D.C.

J. E. Graf (1965), Washington, D.C.

Malvern F. Morse (1963), American Security and Trust Company

Paul A. Scherer, Research Corporation, ex officio

Dael Wolfle, AAAS, ex officio

Haris Nussbaum, AAAS, staff representative

Nominations and Elections

Thomas Park (1961), University of Chicago, chairman

David R. Goddard (1961), University of Pennsylvania

Paul M. Gross (1962), Duke University

Herbert E. Longenecker (1961), Tulane University

Howard A. Meyerhoff (1961), Scientific Manpower Commission

(Two more to be selected)

Public Understanding of Science

Warren Weaver (1963), Alfred P. Sloan Foundation, chairman

Willard Bascom (1961), National Academy of Sciences

Victor Cohn (1962), Minneapolis Star and Tribune

Laurence M. Gould (1964), Carleton College

Richard D. Heffner (1965), CBS Television Network, New York, N.Y.

Thomas Park, University of Chicago, ex officio, Board representative

Dael Wolfle, AAAS, ex officio

Publications

H. Bentley Glass (1961), Johns Hopkins University, chairman

George R. Harrison (1965), Massachusetts Institute of Technology

Chauncey D. Leake (1964), Ohio State University

Thomas Park (1962), University of Chicago

Ralph R. Shaw (1963), Rutgers University

Dael Wolfle, AAAS, ex officio

Graham DuShane, AAAS, staff representative

Science in the Promotion of Human Welfare

Barry Commoner (1962), Washington University, chairman

Robert B. Brode (1963), University of California, Berkeley

T. C. Byerly (1962), Agricultural Research Service, Department of Agriculture, Washington, D.C.

Lawrence K. Frank (1963), Belmont, Mass.

H. Jack Geiger (1962), Harvard Medical School, Boston

Frank W. Notestein (1961), Population Council, Inc., New York, N.Y.

Walter Orr Roberts (1961), University Corporation for Atmospheric Research, Boulder, Colo.

Margaret Mead, American Museum of Natural History, ex officio, Board representative

Dael Wolfle, AAAS, ex officio

Special Committees

AAAS-Campbell Award for Vegetable Research, Judges

Louis P. Reitz (AAAS Section on Agriculture), Agricultural Research Service, Beltsville, Md., chairman

Sterling B. Hendricks (American Society of Plant Physiologists), Plant Industry Station, Beltsville, Md.

Iver J. Johnson (American Society of Agronomy), Caladino Farm Seeds, Inc., Wheaton, Ill.

F. F. Smith (Entomological Society of America), U.S. Department of Agriculture, Entomology Research Branch, Beltsville, Md.

F. C. Stark, Jr. (American Society for Horticultural Science), University of Maryland, College Park

G. Ledyard Stebbins, Jr. (Genetics Society of America), University of California, Davis

E. E. Wilson (American Phytopathological Society), University of California, Davis

AAAS Newcomb Cleveland Prize, Judges

Alfred E. Emerson, University of Chicago, chairman

Wallace R. Brode, Washington, D.C.

Chauncey D. Leake, Ohio State University

Gairdner B. Moment, Goucher College

Conrad Mueller, Columbia University

Thomas Park, University of Chicago

William W. Rubey, University of California, Los Angeles

Paul B. Sears, Yale University

Howard B. Sprague, Pennsylvania State University

Frank Bradshaw Wood, University of Pennsylvania

AAAS Socio-Psychological Prize

Donald P. Ray, George Washington University

Frederick F. Stephan, Princeton University

Dael Wolffe, AAAS

AAAS-Westinghouse Science Writing Awards, Managing Committee

Graham DuShane, AAAS, administrator

Jules B. Billard, *National Geographic Magazine*

Charles N. Fry, Westinghouse Electric Corporation

Harry R. Gail, Westinghouse Electric Corporation

Nate Haseltine, *Washington Post and Times Herald*

Hans Nussbaum, AAAS

Edward G. Sherburne, Jr., AAAS

Popular Science Books

Harrison Brown, California Institute of Technology

Barry Commoner, Washington University

E. U. Condon, Washington University

Kirtley F. Mather, Harvard University

Retirement Plan (must be composed of three staff members)

Dael Wolffe, AAAS, chairman

Hans Nussbaum, AAAS

Raymond L. Taylor, AAAS

Committees To Be Appointed

AAAS Socio-Psychological Prize, Judges

AAAS-Westinghouse Science Writing Awards, Screening Committee

AAAS-Westinghouse Science Writing Awards, Judges

Theobald Smith Award in the Medical Sciences, Judges

Representatives

Advisory Council on Medical Education

Lowell T. Coggeshall, University of Chicago

American Council on Education

Mark H. Ingraham, University of Wisconsin

John R. Mayor, AAAS

American Standards Association Sectional Committee on Fluid Permeation (Z59)

M. King Hubbert, Shell Oil Company, Houston

American Standards Association Sectional Committees on Letter Symbols and on Abbreviations for Science and Engineering (Y1 and Y10)

Irving P. Orens, Newark College of Engineering

American Standards Association Sectional Committee on Preferred Practice for the Preparation of Graphs, Charts, and Other Technical Illustrations (Y15)

Everett T. Burton, Battle Creek, Mich.

American Standards Association Sectional Committee on Use of the Decimalized Inch (B87)

Carl F. Kayan, Columbia University

Council of National Organizations of the Adult Education Association of the United States

John R. Mayor, AAAS

Committee on the Kimber Genetics Award of the National Academy of Sciences

Tracy M. Sonneborn, Indiana University

Council of Old World Archeology

Richard K. Beardsley, University of Michigan

Instrument Society of America Committee on Research and Development

Jesse W. Beams, University of Virginia

Joint Commission on Mental Illness and Health

Ernst Mayr, Museum of Comparative Zoology, Harvard College

National Conference on FAO

Noble Clark, University of Wisconsin

Office of Critical Tables Advisory Board, National Academy of Sciences
Wallace R. Brode, Washington, D.C.

Science Service Board of Trustees

Wallace R. Brode (1963), Washington, D.C.

William W. Rubey (1962), University of California, Los Angeles

Douglas M. Whitaker (1961), Rockefeller Institute

Scientific Manpower Commission

Wallace R. Brode (1961), Washington, D.C.

M. H. Trytten (1963), National Academy of Sciences

U.S. Committee on ISO Technical Committee 37—Terminology

Duane Roller, Harvey Mudd College

U.S. National Commission for UNESCO

S. S. Wilks, Princeton University