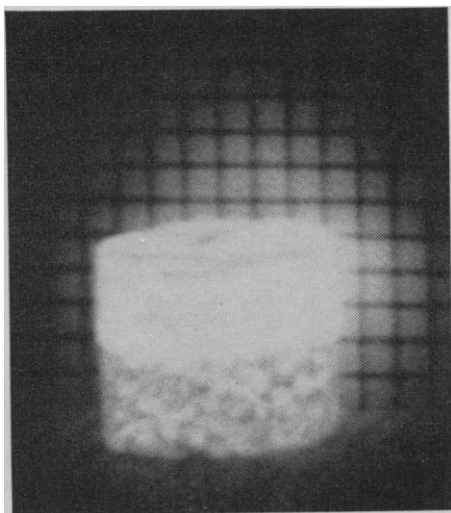


ISOTOPES

for Your
Development Work



Oak Ridge National Laboratory offers more than 300 radioactive and stable isotope products.

RADIOISOTOPES

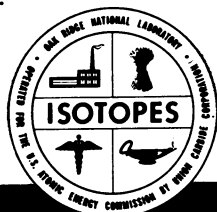
Processed Solutions—90 processed radioisotopes may be obtained, including many carrier-free and high specific activity products.

Now Available—Iridium-192 gamma sources with specific activity up to 100 curies per gram, and cobalt-60 radiography sources 1/8 and 1/16-inch in diameter with specific activity greater than 100 curies per gram. At a reduced price, carbon-14 barium carbonate is available at \$9.50 per millicurie.

STABLE ISOTOPES

More than 200 stable isotopes available from 50 elements.... Chemical processing and target fabrication services also offered.... Ultra-high isotopic purity in a number of isotopes.

For information or literature, write to: Isotopes Division, Oak Ridge National Laboratory, P. O. Box X, Oak Ridge, Tennessee.

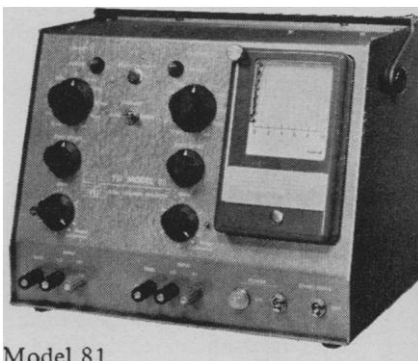


**OAK RIDGE
NATIONAL LABORATORY**

Operated by
UNION CARBIDE CORPORATION
for the
U.S. ATOMIC ENERGY COMMISSION



new *dual* *channel* *laboratory* *recorder* *only* **\$495**



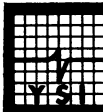
Model 81

Major Features

- 2 independent input channels which simultaneously record full scale.
- Recorder charts channels 1 and 2 alternately at 1 second intervals.
- Trace identification eliminates confusion when traces cross.
- Calibrated volt and ampere ranges for each channel:

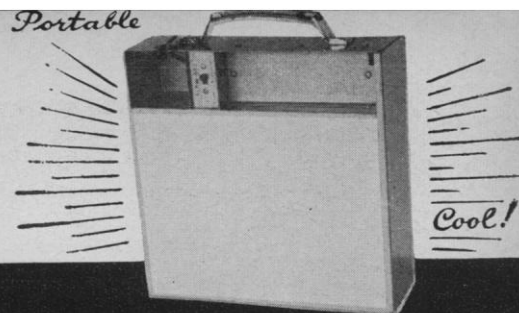
10 mv.	1 μ a.
0.1 v.	10 μ a.
1 v.	0.1 ma.
10 v.	1 ma.
100 v.	10 ma.
- Continuously variable adjustment between ranges.
- Chart speeds of 2 in./hr. and 30 in./hr. Optional speeds of 4, 6, 12, 20, 24 and 60 in./hr. provided by a simple gear change.
- Weighs only 14 lbs. 9 1/2" x 5 1/2" x 7".

Get complete specifications from
your YSI dealer or write:



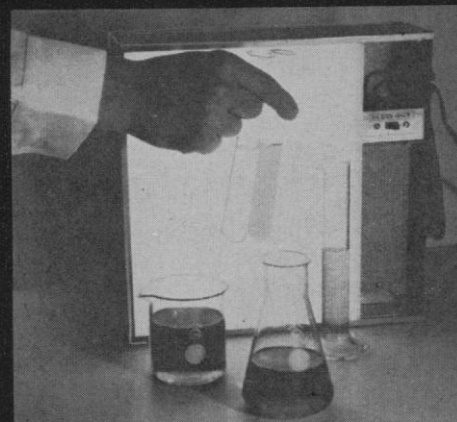
YELLOW SPRINGS INSTRUMENT CO., INC.

Yellow Springs, Ohio

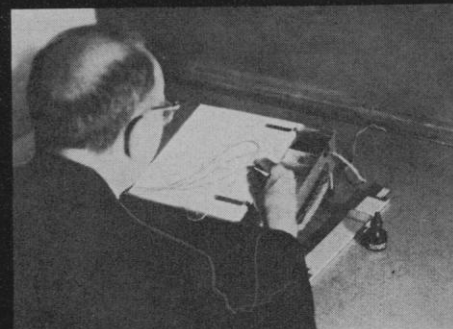


GLOW-BOX

THE SCIENTISTS' LIGHT BOX



STANDS UPRIGHT FOR
DEMONSTRATIONS



TILTS FOR TABLE TOP USE



FITS STANDARD DESK DRAWER
FOR STORAGE OR FOR USE



**INSTRUMENTS for
RESEARCH and
INDUSTRY**
CHELTENHAM, PA.

New Products

The information reported here is obtained from manufacturers and from other sources considered to be reliable. Neither Science nor the writer assumes responsibility for the accuracy of the information. A coupon for use in mailing inquiries concerning the items listed is included in the post card insert. Circle the department number of the items in which you are interested on this coupon.

■ **RESISTIVITY MEASURING TEST SET** for semi-conductor materials features easily interchangeable heads with separate heads for germanium and silicon and a 12-in. traversing platform, for long crystals, with visual scale of travel measure (see Fig. 1). Each probe is mounted on double ruby bushings, and a tolerance of 0.0001 in. variation in probe-point spacing is maintained in use. Accuracy is said to be ± 2 percent. (Semimetals, Inc., Dept. Sci50, 133-20 91 Ave., Richmond Hill 18, N.Y.)

■ **ISOLATION TRANSFORMER** featuring low distributed capacitance between the secondary winding and ground furnishes 350 watts to permit isolating a complete instrument or a component circuit from ground. Shunt capacitance has been reduced to 40 pf. Leakage resistance for the secondary winding exceeds 100 kMohm, and breakdown voltage is greater than 5000. (Elcor Inc., Dept. Sci9, Falls Church, Va.)

■ **MAGNETIC DETECTOR** can measure the magnetic field intensity near the surface of recording media such as magnetic tapes, disks, and drums. The device, said to be capable of resolving 5×10^{-6} in.², comprises a high-gain, low-noise, narrow band-width amplifier and an indium antimonide Hall-effect probe. (Halex, Inc., Dept. Sci14, 310 E. Imperial Highway, El Segundo, Calif.)

■ **REVERBERATION CHAMBER** subjects parts to be tested to 150 db of acoustic power with a wide-band noise siren powered by air at 30-lb/in.² pressure. Air consumption is 60-ft³/min. The chamber is said to provide random frequency down 5 db at 100 cy/sec and down 10 db at 10,000 cy/sec; sinusoidal-input harmonic distortion is less than 15 percent. Volume of the chamber is 27 ft³; 40 percent of the volume is usable. (PAM Associates, Inc., Dept. Sci57, 4127 Hayward Ave., Baltimore 15, Md.)

■ **HUMIDITY METER** is said to measure dewpoints as low as -150°C . The humidity sensor is a wire coated with a hygroscopic dielectric layer which in turn is coated with permeable gold. The capacitance of the sensor varies with the moisture content of the dielectric layer; the capacitance is indicated on the instrument dial. The capacitance change amounts to 0.1 μf , allowing considerable separation between sensor and indicating instrument. (Atkins Technical, Inc., Dept. Sci22, 1276 W. 3 St., Cleveland 13, Ohio)

■ **PORTABLE FLOW CALIBRATOR** is capable of handling jet fuel flow from 100 to 100,000 lb/hr with accuracy said to be ± 0.25 percent of reading. Other ranges can be provided. The complete instrument weighs 250 lb. The calibrator employs three turbine-type flowmeters with overlapping ranges. The signals generated by the flowmeters drive digital instruments to indicate in 0.1-, 1-, and 10-lb increments. An air purging system permits the calibrator to be used in hazardous areas. (Potter Aeronautical Corp., Dept. Sci52, Union, N.J.)

■ **POLAROGRAPHIC INSTRUMENT** embodies the principles of a-c polarography. The voltage applied to the cell consists of low-level square waves superimposed on a slowly changing d-c polarizing voltage. The normal polarographic step is recorded as a peak whose maximum height occurs at the half-wave potential. The instrument is said to be capable of resolving elements whose half-wave potentials differ by as little as 20 mv. Accessories furnished include a thermostatically controlled constant-temperature bath, four cells, mercury pressurization system, nitrogen supply, and built-in monitoring oscilloscope and recorder. (Instrument Corporation of America, Dept. Sci20, 516 Glenwood Ave., Baltimore, Md.)

■ **RECORDING FLOW PHOTOMETER** charts photometric readings of a sample stream through three separate photometer channels arranged vertically in a straight line so that a single glass absorption cell lines up with the three light beams. The equipment is designed to be directly applicable to amino acid analysis. One measurement is made at 440 $\text{m}\mu$ with half-band-width of 16 $\text{m}\mu$, and two measurements are made at 570 $\text{m}\mu$ and 7- $\text{m}\mu$ half-width at two optical path lengths. (Research Specialties Co., Dept. Sci44, 200 South Garrard Blvd., Richmond, Calif.)

■ **DATA ACQUISITION SYSTEM** is a solid-state recording system for acquisition and processing of operating and test data. The system consists of three components: a high-speed scanner in ten channel multiples, an analog-to-digital converter, and an output format control. The scanning and conversion equipment accepts low-level signals without preamplification. The format control receives digital information from either the analog-to-digital converter or from external channels. Also acceptable is digital information from clocks or counters. The format control converts the digital input information to the format required for magnetic-tape programming and computer entry. Input to the system is differential, and scanning speed is 600 channels per second. (Electro-Instruments, Inc., Dept. Sci35, 3540 Aero Court, San Diego, Calif.)

■ **SOIL-RESISTANCE MEASURING UNIT** measures soil resistivity up to 86,500 ohm/cm² when employed with a single rod resistivity setup. For determining anode resistance and other effects when two- or three-electrode setups may be employed, soil resistance up to 10,000 ohms may be measured. The instrument weighs 10 lb with self-contained battery supply. (Associated Research, Inc., Dept. Sci38, 3777 W. Belmont Ave., Chicago, Ill.)

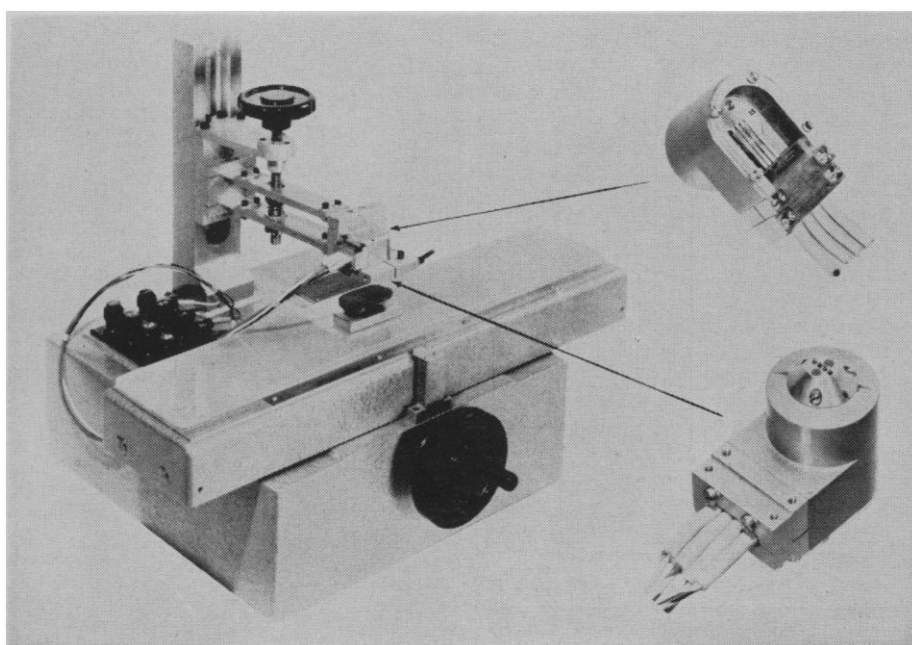


Fig. 1. Resistivity measuring test set.



We are pleased to announce
the availability of
the exceptionally fine Substrates
for the
Histochemical Demonstrations of
**Acid and Alkaline
Phosphatase**

Naphthyl AS-MX Phosphate
Naphthyl AS-BI Phosphate

Ref: Burstone, M.S., Journal of N.C.I., 21
No. 3, Sept. '58.

Unusually stable even in solution.

Eliminates non-specific staining.

Excellent results assured even with cold acetone-fixed,
paraffin-embedded tissues.

Eliminates inconsistent results that commonly occur
with Acid Phosphatase.

For *Phosphatase* in Body Fluids,
or Bacterial Extracts, the
"SIGMA 104"

Procedure is certainly First Choice.

For Acid—Alkaline—Prostatic.

For Accuracy—even at extremely low activities or in
the presence of a high Phosphate Blank.

For Speed—just 2 to 5 minutes of actual work (plus
incubation).

For Micro Techniques.

Guaranteed to surpass any other pro-
cedure—or there is on charge.

Laboratories that are unable to pay in full for essential
Sigma Reagents are invited to inquire about the Sigma
Cooperative Allowance—the unique program that is gen-
erating Good-Will the World over.

CALL US COLLECT AT ANY TIME, JUST TO GET ACQUAINTED

Day, Station to Station,
PROspect 1-5750

Night, Person to Person,
Dan Broida, WYdown 3-6418



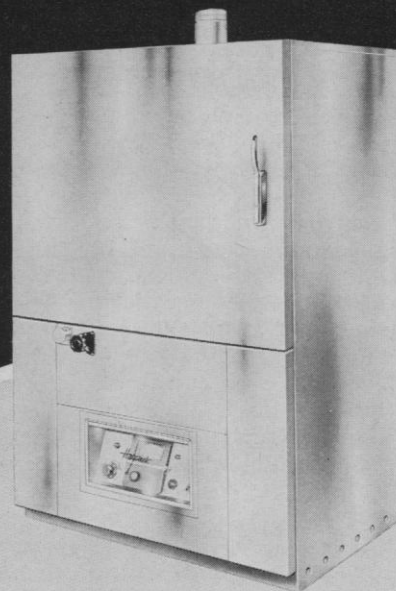
The Research Laboratories of

SIGMA
CHEMICAL COMPANY

3500 DEKALB ST., ST. LOUIS 18, MO., U. S. A.



**A CUSTOM BUILT OVEN
AT STANDARD COST**



New Mechanically Convected
Ovens Provide Maximum
Heat Uniformity — 35° to 350°C

Hotpack's 52 years of engineering experience are reflected in these compact units. Built-in features such as two rear entrance ports and stainless steel chambers (not to mention extra insulation and improved chamber design) means: maximum performance for all heating, baking, drying, etc. Critical temperatures are quickly and accurately attained with an indicating-controlling thermostat, sensitive to within $\pm 1^\circ\text{C}$; optional, true Saturable-Core-Reactor allows variable heater input every step of the way. Added protection is afforded by a Limitstat control. Hotpack's modern crafted recessed panel and plexiglass cover discourages unauthorized or accidental disturbance to controls.

Four new models to choose from (each with fully adjustable stainless steel shelving) . . . chamber 16" to 36" wide, 16" to 30" deep and 19" to 50" high . . . or engineered to your specifications.

For oven bulletin write to:



THE ELECTRIC HOTPACK CO., INC.
5086 COTTMAN AVENUE • PHILA. 35, PA.

■ **SERUM-PROTEIN METER** (Fig. 2) provides three-step analysis for protein in serum. The serum sample is centrifuged, the instrument is zeroed with distilled water, and the sample cell containing serum is then placed on the instrument, which reads directly in grams of protein per 100 ml. Sensitivity is 0.1 gram; range is 0 to 12 g/ml. A second scale reads refractive index difference to 0.0234. Measurement requires 2.5 ml of serum. (Bausch & Lomb, Inc., Dept. Sci60, Rochester 2, N.Y.)

■ **PULSE GENERATOR** furnishes pulses of variable repetition rate from 10 Mcy/sec to 100 cy/sec; duration variable between 0.05 and 1000 μ sec; delay variable between 0.02 and 1000 μ sec; rise time less than 10 nsec; and output amplitude 12 volts on open circuit and 8 volts into 180-ohm load. The instrument is transistorized and of modular construction. (Electro-Pulse, Inc., Dept. Sci37, 11861 Teale St., Culver City, Calif.)

■ **MASS SPECTROMETER**, type 21-110, is of the Mattauch-Herzog type in which a tandem arrangement of electric and magnetic fields focuses ions having the same mass but different initial velocities and directions. Mass range is 2 to 2000, and molecules differing in mass by 1 part in 2500 are said to be separable.

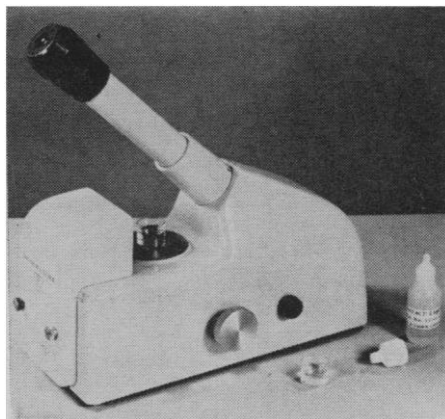


Fig. 2. Serum-protein meter.

The high resolution permits extension to analysis of solids by combination of the spectrometer with a radio-frequency-spark ion source. Metal samples are clamped by pin vises into the electrodes of the ion source. The spark across the samples sends ionized molecules of the sample into the mass resolving system. For use with gas or liquids, the spark source is replaced by an electron-bombardment source. Either a photographic plate or an ion-collector plate may be used as the detector. (Consolidated Electrodynamics Corp., Dept. Sci45, 360 Sierra Madre Villa, Pasadena, Calif.)

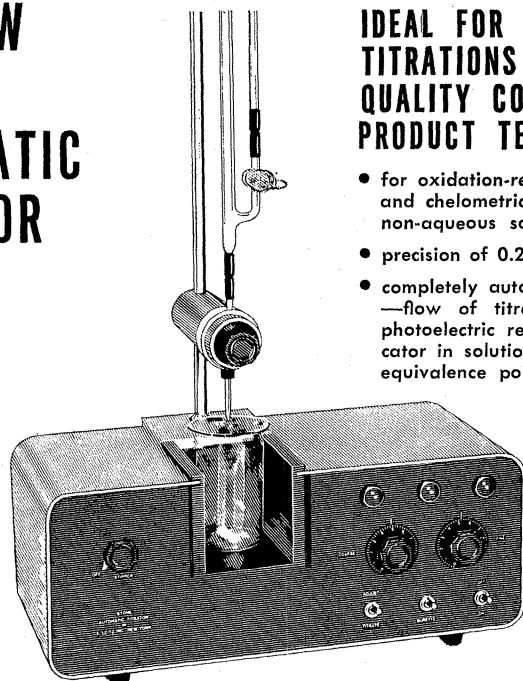
■ **TRANSFER-FUNCTION ANALYZER** obtains transfer functions, frequency by frequency, for random, complex, periodic, or sine wave driving signals. Output is provided in the form of Nyquist or Bode plots. The two signals to be analyzed are respectively the cause and effect signals from the device or system under test. Input-signal voltage levels between 1.0 and 10 volts r.m.s. are accepted. Input impedance is 1.5 Mohm. Operating frequency ranges are 0.5 to 3, 3 to 20, 20 to 200, and 200 to 2000 cy/sec. The input frequency to the unit is swept at a maximum rate of 1 octave in 15 sec; dynamic range is 50 db. Output signals, the in-phase and out-of-phase vector voltages within ± 10 volts d-c, are fed to an X-Y recorder. Output signal errors are stated to be ± 5 percent. (Gulton Industries, Inc., Dept. Sci40, P.O. Box 37, Princeton Junction, N.J.)

■ **FLYING-SPOT PARTICLE RESOLVER** is capable of automatically counting, sizing, and determining the area of microscopic particles within the field of view and of producing a picture of this field on a cathode-ray tube. The instrument also produces an electronic signal suitable for transmission to remote indicators. Magnification up to 8000 diameters is provided with 700-line definition and resolution of 10^{-4} cm. Alternative arrangements permit operation with microscope slides, 35-mm film, and 2-by-2-in. electron micrographs. The instrument can be applied to phase-contrast and dark-field microscope samples by first photographing the samples and using a 35-mm film adapter. (Instrument Corporation of America, Dept. Sci46, 1545 Kennewick Rd., Baltimore 18, Md.)

■ **INTEGRATOR** for standard strip-chart recorders reads out the integral on demand with accuracy said to be ± 0.25 percent of full scale. On a 10-in. wide strip chart moving at 1 in./min, read-out accuracy corresponds to 0.004 in.² of input. The integral is read back into the recorder itself when the operator judges that integration has been completed. The integrator is then reset automatically, and the pen is returned to zero for the next integration. With the addition of a zero-sensing device, the integrator becomes a fully automatic integrating and peak-transmitting device for gas chromatograms. (Schlumberger Well Surveying Corp., Dept. Sci41, Ridgefield, Conn.)

■ **MAGNETIC-TAPE TESTER** is said to detect tape defects as small as one bit in length at speeds up to 150 in./sec and packing densities as high as 1500 bits per inch. Faults are indicated by a pilot lamp on each channel; the tape transport stops on the fault which is then

THE NEW STONE AUTOMATIC TITRATOR



IDEAL FOR ROUTINE TITRATIONS IN QUALITY CONTROL & PRODUCT TESTING

- for oxidation-reduction, acid-base, and chelometric titrations even in non-aqueous solutions
- precision of 0.2% or better
- completely automatic in operation —flow of titrant stops through photoelectric response when indicator in solution changes color at equivalence point

Cat. No.
S98945
\$624.00

STANDARD SCIENTIFIC
Supply Corp.
808 BROADWAY
NEW YORK 3, N.Y.

LABORATORY
APPARATUS
REAGENTS
AND
CHEMICALS

ANNOUNCING

REAC

RADIATION EQUIPMENT & ACCESSORIES CORP.
665 Merrick Rd. Lynbrook, New York
An affiliate of Nuclear Industries Inc.

REAC supplies diversified equipment for nuclear research and educational applications in the physical and life sciences.

Write today for descriptive technical literature.

PAPER CHROMATOGRAPHY APPARATUS

Write for
Catalog K-50
Describing Special
Apparatus for
Paper
Chromatography

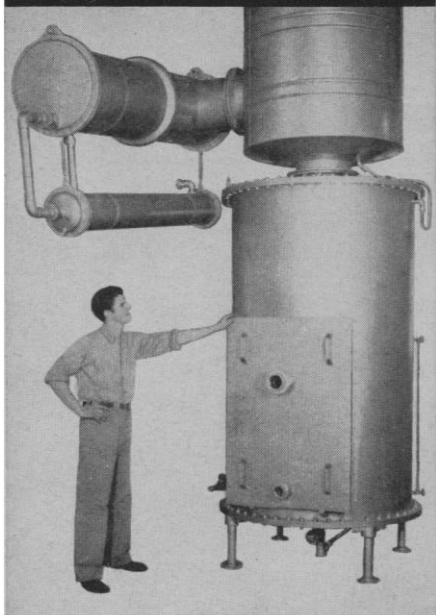
electric desalter
for the removal of
inorganic salts from
sugars, amino acids,
and other organic acids
in preparing samples
for paper chromatography

apparatus for eluting
paper chromatograms
and for small scale
two-dimensional
chromatography

insulated, double glass
cabinets for ascending or
descending chromatography
on paper strips or sheets

KENSINGTON SCIENTIFIC CORPORATION
1717 FIFTH STREET • BERKELEY 10, CALIFORNIA

BARNSTEAD ENGINEERED DISTILLED WATER



FOR CHEMICAL, ELECTRONIC, NUCLEONIC, AND PROCESS INDUSTRIES

Barnstead Stills meet every laboratory and industrial requirement . . . from 1/2 gallon per hour for lab use to thousands of gallons per day for industrial production. Today, more and more industries are turning to Barnstead . . . for the same reasons laboratories and hospitals adopted Barnstead Stills years and years ago . . . highest purity distillate at lowest cost. Barnstead Stills such as the SSQ-300 illustrated are standard in plants engaged in electronic, nuclear, atomic, pharmaceutical and allied fields where distilled water of highest purity is required.

Write for Barnstead Catalog "G" describing Barnstead Stills in capacities of from 1/2 to 1000 G.P.H.

Barnstead®
STILL AND STERILIZER CO.

00 Lanesville Terrace
Boston 31, Mass.

BOSTON, Jamaica 2-8490

SAN FRANCISCO Templebar 2-5391	NEW YORK Kingsbridge 8-1557	LOS ANGELES Murray 1-6663
CHICAGO Rogers Park 1-6173	WASHINGTON, D.C. District 7-1142	DETROIT Enterprise 7422
CLEVELAND Academy 6-6622	PHILADELPHIA Wayne MU 8-2918	ST. LOUIS, MO. Woodland 2-5600

NOW . . .
INSTANT
FLUORS!

LIQUIFLUOR*
(PPO-POPOP CONCENTRATE)

WILL SAVE
YOU HOURS
OF MIXING
TIME!

New LIQUIFLUOR* is an exclusive development of Pilot Chemicals—a pre-mixed liquid concentrate of PPO and POPOP in specially purified toluene which will save you hours of mixing time in the laboratory . . . and greatly reduce the chance for error.

No more time-consuming laboratory weighing and stirring. No more waiting for ingredients to dissolve. All you do is pour LIQUIFLUOR* into the solvent.

Independent laboratory tests show counting efficiencies identical with old 'weigh and stir' method.

ADVANTAGES:

- Saves time — just mix — no waiting.
- Less chance for error in compounding.
- Flexible — can be used with any liquid scintillator system containing toluene.
- Contents: a 25x concentrate. 1 liter contains 100 grams PPO and 1.25 grams POPOP in specially purified toluene.
- Available in 1 liter and 500 milliliter bottles.

FOR COMPLETE INFORMATION,
WRITE TODAY. . . . TO DEPT. S
(A request on your letter-head will bring you a free sample.)

*TM

PILOT

CHEMICALS, INC.

36 PLEASANT ST., WATERTOWN 72, MASS.

HR-92 X-Y X-Y RECORDER

Unconditionally
Guaranteed For One Year



**LOW
\$595⁰⁰
COST**

- Flat bed — Full Chart visibility
- Unitized Construction
- Critically damped response
- Clip-on pen — Interchangeable for multicolor traces
- Standard 8 1/2 x 11 paper

RUGGED "All Purpose" X-Y RECORDER

The HR-92 is a null-seeking servo-type plotter designed to draw curves in Cartesian coordinates on regular 8 1/2 x 11 graph paper. Control panel has zero set and continuously-variable attenuator for each axis. Separate standby and power switches are provided. Two axes are electrically and mechanically independent.

- Amplifiers easily removed if servicing ever becomes necessary. Electrical connections all contained in two plugs for each amplifier.
- Each amplifier channel (including transformer power supply) independent of rest of system.

WRITE FOR:
New X-Y Recorder Circular #792-4
showing complete specifications and photographs.



**houston
instrument**
corporation

Box 22234 • Houston 27, Texas
MO 7-7405

easily accessible for inspection and repair. Included in the tester are a tape transport, a push-button control unit, dual record-playback head, amplifiers, and a logic chassis with fault detector plug-in cards and space for 16 channels. (Potter Instrument Co., Dept. Sci13, Sunnyside Blvd., Plainview, N.Y.)

■ **PULSE GENERATOR** is capable of delivering simultaneously a positive and negative pulse of 2 to 100 nanosecond duration. Rise time is 0.5 nsec, and repetition rate is adjustable between 10 and 100,000 pulses per second. Pulse amplitude is fixed at approximately 8 volts into 50 ohms. Output pulses are preceded by trigger pulses with time difference adjustable over a 100-nsec range. Triggering can be effected by an external source delivering a positive pulse. Because the instrument is all electronic (no mercury switches are used), it can operate in any position. (Edgerton, Germeshausen & Grier, Inc., Dept. Sci19, Boston, Mass.)

■ **VACUUM PUMPING SYSTEM** is a fractionating 6-in. diffusion pump complete with refrigeration, Chevron-type baffle, and hand-operated butterfly valve. The baffle is refrigerated to approximately -30°C by a self-contained, hermetically sealed unit. The system is designed particularly for compactness, over-all height being less than 28 in. Ultimate pressure is said to be less than 5×10^{-7} mm-Hg. (Edward High Vacuum Inc., Dept. Sci36, 1920 Buffalo Ave., Niagara Falls, N.Y.)

■ **COLOR GENERATOR**, for color matching, reconstructs natural daylight by use of color filters, and incandescent, fluorescent, and ultraviolet tubes which are blended by simple preset controls to duplicate the desired type of light. Two table-top models are available, one of which is equipped with a shield that keeps extraneous light away from the object being illuminated. (Gamain Company, Dept. Sci63, 5th and Richmond Sts., Kansas City, Kan.)

■ **THERMAL TEST SET** for measurement of transistor and diode temperatures and other temperatures encountered in electronic equipment design is direct reading; ambient temperature compensation is provided. Accessories include small thermoelectric junctions, a thermometer probe, and evacuated glass thermocouples. Switches permit selection of any one of four outputs. (Rescon Electronics Corp., Dept. Sci62, 151 Bear Hill Rd., Waltham 54, Mass.)

■ **OZONE RECORDER**, model 725-3B, covers the operating range 0 to 100 parts per million by volume. The record is produced on a 6-in. strip chart directly

in terms of ozone concentration. Measurement of ozone is based on an electrochemical reaction occurring at polarizing electrodes immersed in a potassium iodide reagent solution. Sampling rate is approximately 140 cm^3/min . Sensitivity is ± 2 percent of full scale, and response time is 1 min for 75-percent response. Power requirement is 110 volt a-c (100 watts) and one 1.34-volt mercury cell. The instrument will operate unattended for approximately 3 days. (Mast Development Co., Dept. Sci68, Davenport, Iowa)

■ **HYDRAULIC JACK** is designed to apply and maintain the precise loads necessary for use with calibrating instruments, such as proving rings, in the calibration of mechanical-force measur-

ing equipment. A large piston in the pump operates until the pressure reaches approximately 750 lb/in^2 , after which smaller piston becomes effective. Available capacities are 10,000, 30,000, 60,000, and 100,000 lb. (Morehouse Machine Co., Dept. Sci49, 1742 Sixth Ave., York, Pa.)

■ **CROSSBAR SCANNER** provides a 100-channel, six-pole-per-channel capacity which can be readily altered to exchange poles for increased channels. According to the manufacturer, life of the scanner is 20,000,000 operations per cross point. Scanning speeds range up to 50 closures per second per pole. A logic chassis provides commands of start, step, stop, return to "off," reset to zero, designate channel *N* as first, designate



Nalgene beakers pay for themselves every time you drop one!

Now Nalgene beakers are better than ever! They satisfy just about every laboratory requirement you can think of—another big step in Nalge's continuing program of product improvement through plastics research for you. New Nalgene beakers (made of laboratory-grade polypropylene) are corrosion-resistant, lightweight, tapered for safe and easy stacking, and specially designed for easier pouring. Now each beaker has an oval sandblasted area to make marking easier for you.

Just think of the money you'll save by not breaking Nalgene beakers—by not losing their valuable contents. Start replacing glass with safer, economical Nalgene beakers—and you won't have to replace again. Complete line, from 30 to 2000 ml. Ask your laboratory supply dealer.

New catalog on the full line of Nalgene plastic laboratory ware. Write Dept. 211



THE NALGE CO., INC. ROCHESTER 2, NEW YORK
The Quality Standard of Plastic Laboratory Ware

PICK ONE (OR MORE)

DUAL TISSUE GRINDERS

... WE NOW HAVE SIX SIZES

The Duall Tissue Grinders have proved so popular that we're forced (quite willingly) to offer two new small sizes. One has an operating capacity of 1 ml.; the other 3 ml. These, with the four larger sizes already offered, provide capacities up to 50 ml.

Why is the Duall so popular? The homogenizer's unique design allows two-stage grinding on its conical and cylindrical surfaces. Particle size reduction starts in the conical section. Final homogenization occurs when material is forced past the cylindrical surfaces. Here uniform particle size is attained.

Bulletin 460A gives full information on the entire Duall line (both Teflon and glass pestles are offered). Write for your free copy.

Catalog No. K-88545 Duall Tissue Grinder—All Glass

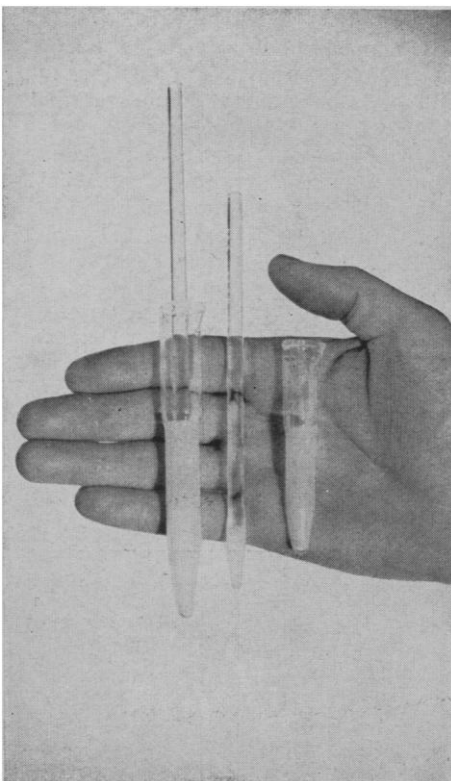
Size	Capacity ml.	COMPLETE
AA	1	9.95
A	3	9.95



**KONTES
GLASS
COMPANY**

First Choice For Quality Technical Glassware
Vineland, New Jersey

Midwest Distributor: Research Apparatus, Inc., Wauconda, Ill.



USED AND APPROVED BY LEADING UNIVERSITIES!

Model RV-6
**6-INCH
DYNASCOPE**
Reflecting Telescope

includes these features:

- Electric Drive
- Rotating Tube
- Setting Circles

**ONLY
\$194.95**

F.O.B. Hartford
Shipping Wt.
50 lbs. Express
charges collect

**Easy Terms
Available!**

Completely
Portable!
Entire telescope
dismantles in
minutes for
easy carrying.

Finest American-made 6-inch reflector in its price range! Save \$100 or more, yet get all these fine features. f/8 6-inch mirror accurate to 1/4 wave • 3 matched eyepieces (75X, 150X, 343X) • 6x30 Achromatic finderscope • Heavy duty mount with setting circles • Rack & Pinion eyepiece holder • Sturdy lightweight tripod.

CRITERION MANUFACTURING COMPANY

Dept. DSM-12, 331 Church St., Hartford 1, Conn.

—FREE FACTS! MAIL COUPON!

Criterion Manufacturing Company
Dept. DSM-12, 331 Church St., Hartford 1, Conn.
☐ Under your unconditional guarantee, please ship me promptly the RV-6 DYNASCOPE. My payment of \$194.95 is enclosed.
☐ Please send FREE LITERATURE on the RV-6 Dynascope and your other DYNASCOPES priced as low as \$49.95.

Name _____
Address _____
City _____ State _____

WILLIAMSON INFRA-RED INSTRUMENTS

Direct Reading & Control RADIOMETERS (from 120°F)

Transistorized for dependable detection of infrared emitted by moving, inaccessible or untouchable surfaces. Fast, accurate. Will link to controls.

STOLL-HARDY RADIOMETER

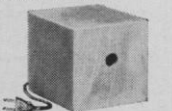
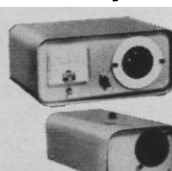
Wide range, rapid readings of surface or environmental radiant temperatures. Super-sensitive at ambient temperatures.

RADIOMETER CALIBRATORS

Self-contained energy source for continuous use. Ranges from ambient to 200°C.

CONE-CHANNEL DETECTOR

Refocuses energy onto smallest possible area at theoretical f/0.5. Small, convenient.



WILLIAMSON
DEVELOPMENT CO., INC.
317 MAIN ST., W. CONCORD, MASS.

channel X as last, and scan continuously. Appropriate combinations of these commands provide flexible programming. (James Cunningham, Son & Co., Dept. Sci16, Rochester 8, N.Y.)

■ REMOTELY OPERATED MICROMETER consists of a micrometer head operating on the screw principle, an electronic control console, and connecting cable. Digital readout to $\pm 10^{-5}$ in. is displayed on the console. Measuring range is 1 in. The head can be remotely zeroed at any point within its measuring range. The micrometer head is said to exert negligible pressure on the work. (J. W. Dice, Dept. Sci7, Englewood, N.J.)

■ LIQUID NITROGEN LEVEL CONTROLLER uses a temperature sensing element that sends a signal to a magnetic amplifier if the temperature is above a pre-set range. The amplifier will then cause a solenoid valve to open, admitting more liquid coolant to the baffle. When the required lower temperature is again reached, a second signal from the sensing element causes the solenoid valve to close and turn off the coolant supply. (Consolidated Vacuum Corp., Dept. Sci51, 1775 Mt. Read Blvd., Rochester 3, N.Y.)

■ MONITORING OSCILLOSCOPE will simultaneously display up to eight waveforms on a vertically mounted 17-in. cathode-ray tube. Repetitive and single-sweep speeds of 5, 2.5, and 1.5 in./sec are provided. A 25-sec single sweep is also available. Sweep linearity is said to be better than 3 percent. Frequency response of the gating amplifiers is said to be from d-c to 1000 cy/sec; response is 3 db down at 1000 cy/sec. (Sanborn Co., Dept. Sci42, 175 Wyman St., Waltham 54, Mass.)

■ MICROORGANISM MILL reduces bacteria, spores, molds, yeast, and pollen granules in hopper capacities ranging from 150 ml to 2 lit. Glass beads, approximately 120 μ in diameter, are incorporated to mix with the slurry, and a set of cutter knives assists in keeping the slurry in suspension. Final refining is performed by hard-faced 2-in. rotor and stator with gap adjustable between 0.0005 and 0.125 in. The equipment is completely enclosed to provide a controlled atmosphere. (Gifford-Wood Co., Dept. Sci33, Hudson, N.Y.)

■ X-RAY DIFFRACTOMETER, manufactured by Hilger & Watts, can be used with x-ray equipment having a tube window not less than 10 1/2 in. above the table on which the diffractometer stands. The diffractometer has double-beam operation and six scanning speeds with continuous scanning. A powder sample holder, a block sample holder, and an integrating holder for heterogeneous

samples may be interchanged. Alternative detectors include Geiger-Mueller counter, scintillation counter, or semi-proportional counters. A two-circle version of the diffractometer is intended for work with single crystals. Its detector can be tilted up to 50 deg for measuring reflections above the equatorial plane. (Engis Equipment Co., Dept. Sci61, 431 S. Dearborn St., Chicago 5, Ill.)

■ **ELECTROLYTIC PROCESS UNIT** for hard anodizing, plating, or electrochemical milling consists of a Lucite plating tank equipped with anode and cathode racks, cooling coil, and agitator; a 20-amp rectifier; and a ¼-ton refrigeration unit; the components are assembled into a desk-size unit 45 by 22 by 40 in. high. Optional equipment includes an immersion heater. Operation is on 120 volts a-c. (Allen Aircraft Products, Inc., Dept. Sci39, Ravenna, Ohio)

■ **POLAROGRAPHIC ANALYZER** provides 23 current ranges from 0.5 to 300 μ a full scale and ten polarizing ranges, from +1½ to -5 volts. Accuracy of the unit is said to be $\pm 1/2$ percent for current and voltage, repeatability $\pm 1/4$ percent. The recorder chart is 5 in. wide; chart speed is ½ in./min. Bridge drive is synchronous, with a rotation time of 10 min. Standardization is manual against an internal cell. (Nesco Instruments, Inc., Dept. Sci43, 638 W. 17 St., Costa Mesa, Calif.)

■ **PHASE-SHIFTING TRANSDUCERS** are designed for use at specific frequencies to provide an output signal the phase of which is a function of shaft rotation. Maximum operating speed is 5000 rev/min. The transducers are complete phase-shifting systems, consisting of capacitor, bridge network, and balanced-line components in a single housing; components are capacitance coupled. (Nilsen Manufacturing Co., Dept. Sci48, 23 N. Church St., Addison, Ill.)

■ **TWO-PEN, TWO-AXIS RECORDER** includes three servo-actuated drives for x, y, and y₂, isolated from ground. Recording speed is 1½ sec full scale on x-axis and ½ sec full scale on the y-axes. Full-range zero set and one full scale of zero suppression are provided on each axis. Ten input voltage ranges from 7.5 mv to 150 v are provided on the x-axis, and ten ranges from 5 mv to 100 v are provided on the y-axes. (F. L. Moseley Co., Dept. Sci15, 409 Fair Oaks Ave., Pasadena, Calif.)

■ **CONDUCTIVITY INSTRUMENT** for measurement of flowing solutions covers a range of 5×10^{-6} to 4 mho with three continuous flow cells. Hold-up volumes are 0.02 to 0.05 ml. A discriminator

Presenting
The **WORLD'S FIRST**
and **ONLY**
DISPOSABLE
PLASTIC
MOUSE
*** CAGES**

Will comfortably hold
up to 6 mice
... each cage approximately
11" L. x 8¾" W. x 5" H.



Tested and proved in
extensive laboratory tests

A new disposable mouse cage that does away with disagreeable sterilizing! Combines a nickel-plated steel top with a plastic, escape-proof disposable cage bottom. Constructed of a tough, new plastic which is inert and non-allergic. Now, priced so low that you use the cage bottom just once—then destroy! In fact, priced less than it costs to clean and maintain standard type cages. Cages are transparent for continuous observation and suspended on cardboard supports for stability and free air circulation. Top is fully ventilated to maintain ambient temperatures . . . entire cage structure is assured gnaw-proof. Bottoms are designed to nest for compact stacking in minimum space . . . permit storage close to experiment area.

Order your **SPECIAL TEST PACKAGE TODAY!**
Only \$19.75 each
Sold only through these authorized distributors:
ALOE SCIENTIFIC
CANADIAN LABORATORY SUPPLIES, Ltd.
CHICAGO APPARATUS CO.
HARSHAW SCIENTIFIC
Division of The Harshaw Chemical Co.
SCIENTIFIC PRODUCTS
Division of American Hospital Supply Corp.
SCIENTIFIC SUPPLY CO.
Mail your order today!

**Components of the
S.I.U. DISPOSABLE MOUSE CAGES**



Aluminum Food Hopper
Water Bottle
Rubber Stopper
Stainless Steel Tube
Nickel-plated Steel Top
Disposable Plastic Cage Bottom
Folding Support
Observation Flap and Record Holder

Developed by the Microbiology and Design Departments of Southern Illinois University, Carbondale, Illinois
*Foreign and Domestic Patents Pending

Cage bottom and contents burn completely



Division of Labline, Inc.

circuit reduces the influence of varying cell resistance. Connection can be made to a Z jack for impedance measurements. (LKB Instruments, Inc., Dept. Sci17, 4840 Rugby Ave., Washington 14, D.C.)

■ **RUNNING-TIME METERS**, housed in multiples of ten in a 7-by-13-in. housing, are available for reading to the nearest hour and tenth, tenth and hundredth, or minute and tenth. Signal lights, one for each meter, indicate when time is being accumulated. The unit operates on 26 volts. (Gorrell & Gorrell, Dept. Sci30, Westwood, N.J.)

■ **SEMICONDUCTOR STRAIN GAGE**, model MS 105-350, is said to be bondable to practically all surfaces. The gage, measuring 1 by 0.5 in., consists of a thin silicon element $\frac{3}{8}$ in. long, 0.020 in. wide and 0.0005 in. thick, attached to an epoxy based carrier for application to test surfaces. Integral lead tabs are provided for connection to instrumentation systems. Resistance of the gage is 350 ohms; gage factor is approximately 130. Operating temperature range is -65° to $+180^{\circ}\text{F}$. Maximum operating strain is greater than 3000 $\mu\text{in./in.}$ (Micro Systems, Inc., Dept. Sci64, 2925 E. Foothill Blvd., Pasadena, Calif.)

■ **STANDARD-GAIN ANTENNAS** consist of a series of 14 broad-band waveguide horns that cover the microwave bands from 0.95 to 90 kMc/sec. Horns are made of anodized aluminum or plated brass of light-weight construction. Each horn is furnished with data on gain versus frequency characteristics. (Scientific-Atlanta, Inc., Dept. Sci55, 2162 Piedmont Rd., N.E., Atlanta 9, Ga.)

■ **ELECTRONIC STETHOSCOPE**, manufactured by Primo Sound Research Ltd., Tokyo, Japan, is said to amplify up to 100 times more than the conventional stethoscope. High and low filters permit unwanted sounds to be eliminated. An output is provided to feed a tape recorder, oscilloscope, or other instrument. Power is supplied by 6 penlite cells. (Trans-Pacific Electronics, Inc., Dept. Sci18, 4216 Lankershim Blvd., North Hollywood, Calif.)

■ **SLIDE FILING CABINET** accommodates 2340 slides, 2 by 2 in., or 78 slides, 4 by $3\frac{1}{4}$ in., or combinations. Slides are said to be easily removed and replaced and can be viewed against a light-diffusing frame included in the cabinet. (Multiplex Display Fixtures Co., Dept. Sci23, 910 N. 10 St., St. Louis 1, Mo.)

■ **RECORDER** of null-balance servo potentiometer type with chopper-stabilized system has a full-scale span of 1 mv. Maximum source resistance is 50 kohm. Pen speed is $\frac{1}{2}$ sec for full-scale traverse, and accuracy is said to be ± 0.5 percent of full scale. Voltage ranges up to 10 v can be selected from a front-panel attenuator. Chart width is 5 in.; chart speed can be changed. (Nesco Instruments Inc., Dept. Sci53, 638 W. 17 St., Costa Mesa, Calif.)

■ **VACUUM GAGE** uses tritium to provide ionization. The isotope forms part of the inner metal surface of the instrument. The gage covers the range 0.001 to 100 mm-Hg. Ionization current is produced by a 45-volt battery and is measured by a microammeter. According to the manufacturer, there is no detectable external radiation; no special licensing is required. (Radiation Research Corp., Dept. Sci54, 1114 First Ave., New York 21, N.Y.)

■ **COMPONENT DISPENSER** cuts and bends axial leads of electronic components into desired configuration automatically or semiautomatically. Cutting and bending dies are said to be adjustable in less than 1 min; runs of 10 to 20 components are economical. Storage capacity is 48 in six hopper chutes. (Schmit Engineering Co., Dept. Sci56, 4062 Fabian Way, Palo Alto, Calif.)

JOSHUA STERN
National Bureau of Standards,
Washington, D.C.



NO GROWING PAINS!

with  modular gas chromatographs

You can modernize your present gas chromatograph and adapt it for other systems of use as well. Add refinements where and when you need them. Insert a detector and power supply for a new detection method and obtain the equivalent of a whole new system. It's easy to do, and the cost is low with RSCo modular additions.

Or, for your first investment in a gas chromatograph RSCo's complete modular system offers these unusual advantages. Economical conformance to your first needs. Expandability at any time with easily added modules. Progressively greater usefulness because adaptability banishes obsolescence. Highest quality of performance to advance your research projects.

A card or phone call today brings our catalog of nearly thirty top-quality RSCo modules. Whether used in combinations of complete systems or in groups of two or three simply to augment your existing system, the RSCo units do outstanding gas chromatography.



DEPT. A
RESEARCH SPECIALTIES CO.

200 SOUTH GARRARD BLVD. RICHMOND, CALIFORNIA

**new
england
nuclear**

CHOLESTERYL STEARATE - 1 - C¹⁴

\$42.50 per 100 μ c

CHOLESTERYL 4 - C¹⁴ - STEARATE

\$137.50 per 50 μ c

CHOLESTERYL 7 - H³ STEARATE

(in process)

CATALOG ON REQUEST

new england nuclear corp.

575 ALBANY STREET, BOSTON 18, MASS. Liberty 2-5964

AEL MODEL 198

ELECTRONIC STIMULATOR

**IDEALLY SUITED FOR
STUDENT USE OR GENERAL
LABORATORY APPLICATIONS**



\$95⁰⁰

- Frequency: 1-100 CPS in two ranges
- Duration: 0.2 to 20 Milliseconds in two ranges
- Output: 0-100 Volts
- Polarity Switch

- Repetitive Stimuli, Single Stimulus or D. C.
- Syng. Output—10 Volts
- Power Requirements: 110 V—60 Cycles

ALL CONTROLS CONTINUOUSLY VARIABLE

AMERICAN ELECTRONIC LABS., INC.

121 North 7th Street, Philadelphia 6, Pa. • Walnut 5-8780

MICRO PROJECTION

with the

REICHERT

MICRO-VIEWSCOPIES

- NO eyestrain
- NO intense motionless inspection
- NO time-consuming setups



MICRO-VIEWSCOPE II

The Micro-Viewscope Model II is a complete micro-projector combining a microscope, an illuminating system and a projection screen into one compact unit. Magnifications 50x to 1000x.



MICRO-VIEWSCOPE ATTACHMENT

The Micro-Viewscope Attachment instantly converts any available microscope with monocular tube into a micro-projection unit.

REQUEST LITERATURE

WILLIAM J. HACKER & CO., INC.

BOX 646 • WEST CALDWELL, N. J. • CAPITAL 6-8450



- Suitable For Operation From 0°C. Down To — 70°C. Using Solid Carbon Dioxide
- Bath Differential At — 70°C. is $\pm 0.05^\circ\text{C}$. or Better
- Large Working Area—7¾" Diameter x 14½" Deep
- Double Glass Viewing Windows Allow Complete Visibility
- Special Viscosimeter Lids Available
- Controls Readily Accessible
- Ruggedly Constructed—Virtually No Maintenance

Write for Complete Literature

SCHUCO SCIENTIFIC
DIV. OF SCHUELER & COMPANY / 75 CLIFF ST., NEW YORK 38, N. Y.

the modern slant

**MORTON stainless steel
CULTURE TUBE
CLOSURE***

THE PROVEN REPLACEMENT
FOR COTTON PLUGS

Grip culture tubes with patented pressure fingers

- Assure reduced evaporation of culture media
- Provide adequate aeration for culture
- Resist corrosion and retain resilience
- Reliably prevent contamination.

*U. S. Pat. No. 2,287,746

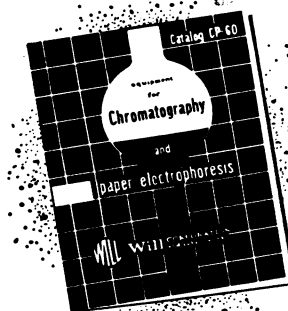
WRITE TODAY FOR BROCHURE C-3
BELCO GLASS INC.
VINELAND, NEW JERSEY

"research
deserves
the best"

Chromatography?




Will CORPORATION

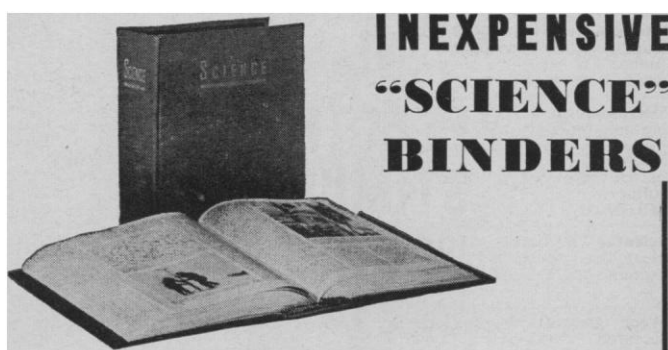


has an all new 36 page book that illustrates and describes hundreds of Will stocked items . . . all designed for chromatographic or electrophoretic techniques. Current prices and technical data make this a comprehensive reference guide for the analyst.

The all new Will Chromatography Catalog is yours free. Simply write or call your nearby Will Corporation Lab Supply Center.

Will CORPORATION
and subsidiaries  *Specialists in
Scientific Supply*

ROCHESTER 3, N. Y. • ATLANTA 25, GA. • NEW YORK 52, N. Y. • BALTIMORE 24, MD.
BUFFALO 5, N. Y. • SO. CHARLESTON 3, W. VA.



Keep your copies of **SCIENCE** always available for quick, easy reference in this attractive, practical binder. Simply snap the magazine in or out in a few seconds—no punching or mutilating. It opens **FLAT**—for easy reference and readability. Sturdily constructed—holds 26 issues.

Now made of stronger materials and with a 4-inch spine to accommodate heavier volumes.

This beautiful maroon buckram binder stamped in gold leaf will make a fine addition to your library. Only \$3.25 postpaid; add 50¢ for orders outside the U.S. (Personal check or money order, please.) Name of owner, 75¢ extra; year of issues, 50¢ extra.

SCIENCE • 1515 Massachusetts Ave., NW,
Washington 5, D.C.

PERSONNEL PLACEMENT

CLASSIFIED: Positions Wanted, 25¢ per word, minimum charge \$4. Use of Box Number counts as 10 additional words. Payment in advance is required.

COPY for ads must reach **SCIENCE** 2 weeks before date of issue (Friday of every week).

DISPLAY: Positions Open. Rates listed below—no charge for Box Number. Rates net. No agency commission. No cash discount. **Minimum ad:** 1 inch. Ads over 1 inch will be billed to the nearest quarter inch. Frequency rate will apply to only repeat of same ad. No copy changes. Payment in advance is required except where satisfactory credit has been established.

Single insertion \$40.00 per inch
4 times in 1 year 38.00 per inch

For **PROOFS** on display ads, copy must reach **SCIENCE** 4 weeks before date of issue (Friday of every week).

Replies to blind ads should be addressed as follows:
Box (give number)
Science
1515 Massachusetts Ave., NW
Washington 5, D.C.

POSITIONS WANTED

(a) **Bacteriology** (virology) Ph.D., biochemistry minor; medical school teaching and research experience; prefers academic appointment. (b) **Young Psychologist** Ph.D., university teaching, research on aging and x-irradiation effects; available for experimental psychology or animal behavior research position. (Please write for information regarding these and other scientists in all fields; nationwide service.) S1-3 Medical Bureau, Inc., Science Division, Burneice Larson, Chairman, 900 North Michigan Avenue, Chicago. X

Biophysicist. Background cell physiology, radiobiology; 4 years' teaching and research experience since doctorate. Desires academic or research appointment. Interested in basic problems of cellular and subcellular replication. Box 7, SCIENCE. X

Foreign Papers translated to English and vice versa by experts. Nominal fee. Box 4, SCIENCE.

Internist-Hematologist, M.D. Seeks teaching, research institute, or hospital position. Available in June 1961. Presently on the staff of a well-known research institute. Box 5, SCIENCE. X

Microbiology, Ph.D.; experienced. Desires teaching and research position. Box 10, SCIENCE. X

Microbiologist, M.S., 15 years' comprehensive research experience: bacteriology, virology, tissue culture. U.S. Civil Service status. Box 11, SCIENCE. X

Scientist-Translator will translate Japanese technical documents. \$30 per 1000 words. Hiroshi Oyama, 307 Decatur, Monterey, Calif. 1/27; 2/3, 10

Weed Control, Phytopathology, Botany, Ph.D., research, development, and administrative experience. Desires teaching, research, or commercial appointment. Box 6, SCIENCE. X

Zoologist, Ph.D., 38, married, 8 years' college teaching, research interest in comparative serology. Has grant. Teaching and research. Box 8, SCIENCE. X

POSITIONS OPEN

ANATOMIST, HISTOLOGIST, CYTOLOGIST, HISTOCHEMIST

Ph.D. or equivalent. Research institute, New York. Modern, well-equipped, and staffed laboratory. Opportunity for training in electron microscopy.

Box 12, SCIENCE

ASSOCIATE DIRECTOR, MEDICAL RESEARCH

Ph.D. biochemist, with experience in research and tracer methodology, for clinic and research foundation with established research program. Needed by summer or fall of 1961. Pacific Northwest.

Box 9, SCIENCE

POSITIONS OPEN

Chief of Pediatrics for internationally known chest hospital. Pediatric service now 50 beds, to be expanded to approximately 125 beds. Includes tuberculosis, cardiac disease amenable to surgical intervention, asthma, cystic fibrosis, and other chest entities. Active research, teaching, and rehabilitation programs. Mail curriculum vitae to Dr. S. Dressler, Chief of Staff, National Jewish Hospital, 3800 East Colfax Avenue, Denver, Colorado. 1/6, 13, 20

Medical Writer-Editor

Unusual opportunity for scientifically trained or experienced medical writer. Professional position with Ethical Pharmaceutical Division of expanding chemical corporation located in New York City suburbs. Box 230, SCIENCE.

Ph.D. for Basic Research in Cystic Fibrosis. Field of interest—mucous synthesis on cellular level, analyses of body secretions and enzyme kinetics. Knowledge of use of isotopes helpful. Time for other work in field of personal interest. New research facilities. Excellent salary.

Box 2, SCIENCE

PHYSICAL SCIENTISTS

Look for openings at
MELPAR

See our advertisement
on page 239

(a) **Senior Bacteriologist;** Ph.D. to conduct basic research, infectious diseases; participate in study, development synthetic drugs for human, veterinary use; to \$10,300; prominent eastern company; also (b) **Research Parasitologist or Mycologist;** B.S., M.S., work with problems in developing compounds in medical-veterinary fields, in vitro, in vivo research programs; to \$8100; same organization. (c) **Biochemist;** B.S., M.S., to supervise well-equipped, staffed department, 350-bed general hospital; to \$7500 for M.S.; midwestern metropolitan location. (d) **Biochemist;** Ph.D. to aid reorganizing laboratory, 300-bed voluntary hospital; \$12,000, outstanding personnel program; Southeast. (e) **Biochemist;** Ph.D. preferred to head active laboratory, 700-bed general hospital; to \$10,000; Southwest. (f) **Information Scientist;** advanced degree trained, experienced biological sciences, medical writing; duties include abstracting medical reports, assisting in preparation new drug applications, processing medical information requests for outstanding pharmaceutical company; to \$8000. (g) **Biochemist;** M.S., Ph.D., to supervise section; busy laboratory under direction two pathologists; 300-bed Ohio hospital; to \$12,000. (h) **Organic Chemists;** Ph.D.'s to conduct, direct basic research in organic synthesis of new compounds for prominent eastern company; to \$10,000. (i) **Bacteriologist;** clinical experience required to supervise department, 350-bed general hospital; to \$9600 for Ph.D.; West Coast. (j) **Biochemist;** M.S., or equivalent to head section, 300-bed general hospital; to \$9600 for Ph.D.; Chicago area. (k) **Senior Pharmacologist;** Ph.D. trained, experienced to supervise acute, chronic cardiovascular screening programs, related responsibilities; to \$10,000; East, Science Division, **Woodward Medical Bureau**, Ann Woodward, Director, 185 North Wabash, Chicago. X

VIROLOGIST

Ph.D. or equivalent to participate in research and development of antiviral agents, design studies, and evaluate data. Opportunity for broad contact inside and outside company. Liberal benefits. Send full personal information and salary requirements to: L. H. Watson, Smith Kline & French Laboratories, 1548 Spring Garden Street, Philadelphia 1, Pa.

BIOCHEMISTS

RESEARCH

Challenging positions are available for Biochemists with a B.S. or M.S. degree and some research experience in protein and carbohydrates.

These positions offer an opportunity to use your initiative and creative ability on interesting and varied programs. Excellent employee benefits include tuition free graduate study. Please send resume to E. B. Beck.

ARMOUR RESEARCH FOUNDATION

OF ILLINOIS INSTITUTE OF TECHNOLOGY
10 W. 35th ST. • CHICAGO 16, ILLINOIS

THE HUMAN INTEGUMENT NORMAL AND ABNORMAL

Editor: Stephen Rothman 1959

AAAS Symposium Volume No. 54

A symposium presented on 28-29 December 1957, at the Indianapolis meeting of the American Association for the Advancement of Science and cosponsored by the Committee on Cosmetics of the American Medical Association and the Society for Investigative Dermatology. The volume offers a fair illustration of what has been achieved by modern research in cutaneous physiology and pathophysiology.

270 pp., 59 illus., index, cloth. \$6.75
AAAS members' cash orders \$5.75

Chapters

- 1) The Integument as an Organ of Protection
- 2) Circulation and Vascular Reaction
- 3) Sebaceous Gland Secretion
- 4) Pathogenetic Factors in Pre-malignant Conditions and Malignancies of the Skin

British Agents: Bailey Bros. & Swinfen, Ltd., Hyde House, W. Central Street, London, W.C.1

AAAS

1515 Massachusetts Ave., NW
Washington 5, D.C.

POSITIONS OPEN

(a) **Plant Physiologist** familiar with radiotracer techniques for research with leading chemical manufacturer; Midwest. (b) **Laboratory Director** of central unit of state health department, bacteriology and supervisory experience required; \$8000-\$11,500; South. (c) **Pharmacologist/Physiologist** for endocrinology research with drug manufacturer; \$9000-\$11,000; Midwest. (d) **Microbiologist** Group Leader of researchers on studies of diseases of mollusks caused by bacteria; around \$7500; East. (e) **Biochemist** to supervise laboratory of university-affiliated hospital and clinic; ample time for independent research; high salary; Northwest. (f) **Botanist** for faculty of leading state university; Midwest. (g) **Genetic Scientist** for cancer research at leading institute; \$8000-\$10,000; East. (h) **Animal Pathologist**, Ph.D. or D.V.M. for research on surgical sutures and foreign bodies for important manufacturer; East. (i) **Organic Chemist** experienced in synthesis of natural products with group leadership ability for new unit of large firm; \$8000-\$12,000; Midwest. (j) **Bacteriologist** to supervise production of vaccines, serums and development of new products for biological firm; \$10,000 up; Midwest. (k) **Toxicologist** for state health department; \$6500 up; South. (l) **Soil Scientist** trained in plant ecology or nutrition for environmental radioactive contamination research at university division; around \$10,000; Pacific Coast. (Please write for details; also many other positions available through our nationwide service.) S1-3 Medical Bureau, Inc., Science Division, Burneice Larson, Chairman, 900 North Michigan Avenue, Chicago. **THE BEST SOURCE FOR THE BEST MEDICAL-SCIENTIFIC POSITIONS.** X

SENIOR BIOLOGICAL AND RESEARCH POSITIONS with the

CANADIAN DEPARTMENT OF AGRICULTURE
SALARIES—\$8120—\$11,200 PER ANNUM

ANIMAL GENETICIST—To undertake research in quantitative genetics with the ultimate objective of obtaining basic information needed for an understanding of inheritance of economic traits in livestock and poultry.

FOREST BIOLOGIST—Plant or Forest Pathologist of design, conduct, and supervise research in diseases of forest nursery stock.

QUANTITATIVE GENETICIST—Mathematician or Statistician to conduct research into methods appropriate for dealing with problems in quantitative genetics.

Inquiries are invited from persons with a number of years of productive research experience and appropriate training to the Ph.D. level or equivalent. Details of education, experience, publications, and research projects should be attached. Reference 61-2201 should be quoted. Direct inquiries to—

CIVIL SERVICE COMMISSION OF CANADA
OTTAWA, ONTARIO
Attention: Functional Division

TEACHING POSITION

Open for **Ph.D. in Biology** qualified to teach invertebrate zoology and/or physiology. September 1961. Rank of assistant professor. Salary, minimum \$6000 for 9 months. Apply to Dr. Val Woodward, Chairman, Department of Biology, Wichita University, Wichita, Kansas.

VIROLOGIST

With doctoral degree and experience, to head well-equipped public health virus laboratory. Starting salary dependent on qualifications. Range \$740-\$890. Contact Administrative Officer,

State Board of Health
Helena, Montana

FELLOWSHIPS

Applications now being accepted for **Graduate Study in Biochemical Pharmacology** leading to Ph.D. degree. Prerequisites are a B.S. degree in chemistry or biology with a strong chemistry background. Research programs in progress on amino acid and nucleic acid metabolism, biochemical genetics, smooth muscle physiology, mechanism of enzyme action, and mechanism of drug action. Fellowships available with an initial stipend of \$3000 per annum. Personal interviews arranged for promising applicants. Write to Chairman, Department of Pharmacology, St. Louis University School of Medicine, St. Louis 4, Mo.

FELLOWSHIPS

ANNOUNCING UNIVERSITY OF LOUISVILLE PREDOCTORAL FELLOWSHIPS IN BIOCHEMISTRY for 1961-1962. Stipends begin at \$1800, tax-free, tuition paid. Dependent and travel allowances. Applications should be submitted by 1 March. Write Chairman, Department of Biochemistry, University of Louisville School of Medicine, 101 West Chestnut Street, Louisville 2, Kentucky, for application. 1/27

PREDOCTORAL AND POSTDOCTORAL FELLOWSHIPS IN MEDICAL PHYSICS. Opportunities to do graduate work in the basic medical sciences and in their application to clinical problems. Emphasis is on the fields of radiation biology, radiation physics, and the clinical use of radioisotopes. Study programs leading to the M.S. and Ph.D. degrees and postdoctoral research supported by fellowships. Stipends vary with training and dependents. Write to Chairman, Department of Radiology, Medical Center, University of California, Los Angeles 24, Calif. 2/17; 3/17

UNIVERSITY OF FLORIDA

Research Assistantships in Anatomy, Biochemistry, Microbiology, or Physiology Leading to M.S. and Ph.D. Degrees:

FIELDS OF RESEARCH ACTIVITY include experimental embryology, teratology, electron microscopy, venom toxicology, neuroanatomy, neurophysiology, endocrinology, respiration, hemodynamics, immunology, virology, parasitology, bacterial physiology, protein structure and metabolism, nucleic acids, lipids, vitamin synthesis, enzyme mechanisms, biophysical chemistry.

LIBERAL STIPENDS (\$255 a month), tuition reduction; high faculty-graduate student ratio; modern new air-conditioned medical school with excellent research facilities; new graduate student housing; pleasant Florida climate.

ADMISSION REQUIREMENTS: Bachelor's degree with high academic achievement, and Graduate Record Examination scores.

For detailed information, write to the chairman of the department of your major interest, UNIVERSITY OF FLORIDA COLLEGE OF MEDICINE, GAINESVILLE, FLORIDA.

The Market Place

BOOKS • SERVICES • SUPPLIES • EQUIPMENT

DISPLAY: Insertions must be at least 1 inch in depth. Weekly invoices will be sent on a charge account basis—provided that satisfactory credit is established.

Single insertion	\$40.00 per inch
4 times in 1 year	38.00 per inch
7 times in 1 year	36.00 per inch
13 times in 1 year	34.00 per inch
26 times in 1 year	34.00 per inch
52 times in 1 year	32.00 per inch

For PROOFS on display ads, copy must reach SCIENCE 4 weeks before date of issue (Friday of every week).

SUPPLIES AND EQUIPMENT

SWISS MICE



Send for booklet

TACONIC FARMS

GERMANTOWN NEW YORK

YOU NEED THIS FREE CATALOG FOR YOUR FILES

Serums, antisera and bloods of all kinds for technicians and tissue culture laboratories. No salesman will call.

COLORADO SERUM CO.

4950 York St. • MAin 3-5373 • Denver 16, Colo.

SUPPLIES AND EQUIPMENT

• HYPOPHYSECTOMIZED RATS

Shipped to all points via Air Express
For further information write

HORMONE ASSAY LABORATORIES, Inc.
8169 South Spaulding Ave., Chicago 29, Ill.

Do You Need:

Analytical Grade Ion Exchange Resins?

(Prepared from Dowex Resins)
ASK FOR PRICE LIST SM

Do You Need:

Cellex Cellulose Ion Exchangers?

(For fractionation of proteins, nucleic acids, and enzymes)
ASK FOR PRICE LIST SCX

Do You Need:

Silicic Acid?

(Specially prepared for lipid chromatography)
ASK FOR PRICE LIST SSA

BIO-RAD Laboratories

32nd & GRIFFIN AVE. • RICHMOND, CALIFORNIA

Rats from the Wistar Strain

Laboratory Animals

since 1929

ALBINO FARMS, P.O. BOX 331
RED BANK, NEW JERSEY

Swiss Mice — Albino Rabbits



GRA LAB INTERVAL TIMER Automatic signalling and switching over unusually wide range of 3600 possible settings.

GRA LAB MICRO TIMER 1/10 sec. or 1/1000 min. stop clock. Remote start stop control. Write for catalog.

DIMCO-GRAY COMPANY
214 E. SIXTH ST., DAYTON 2, OHIO

BOOKS AND MAGAZINES

Your sets and files of scientific journals

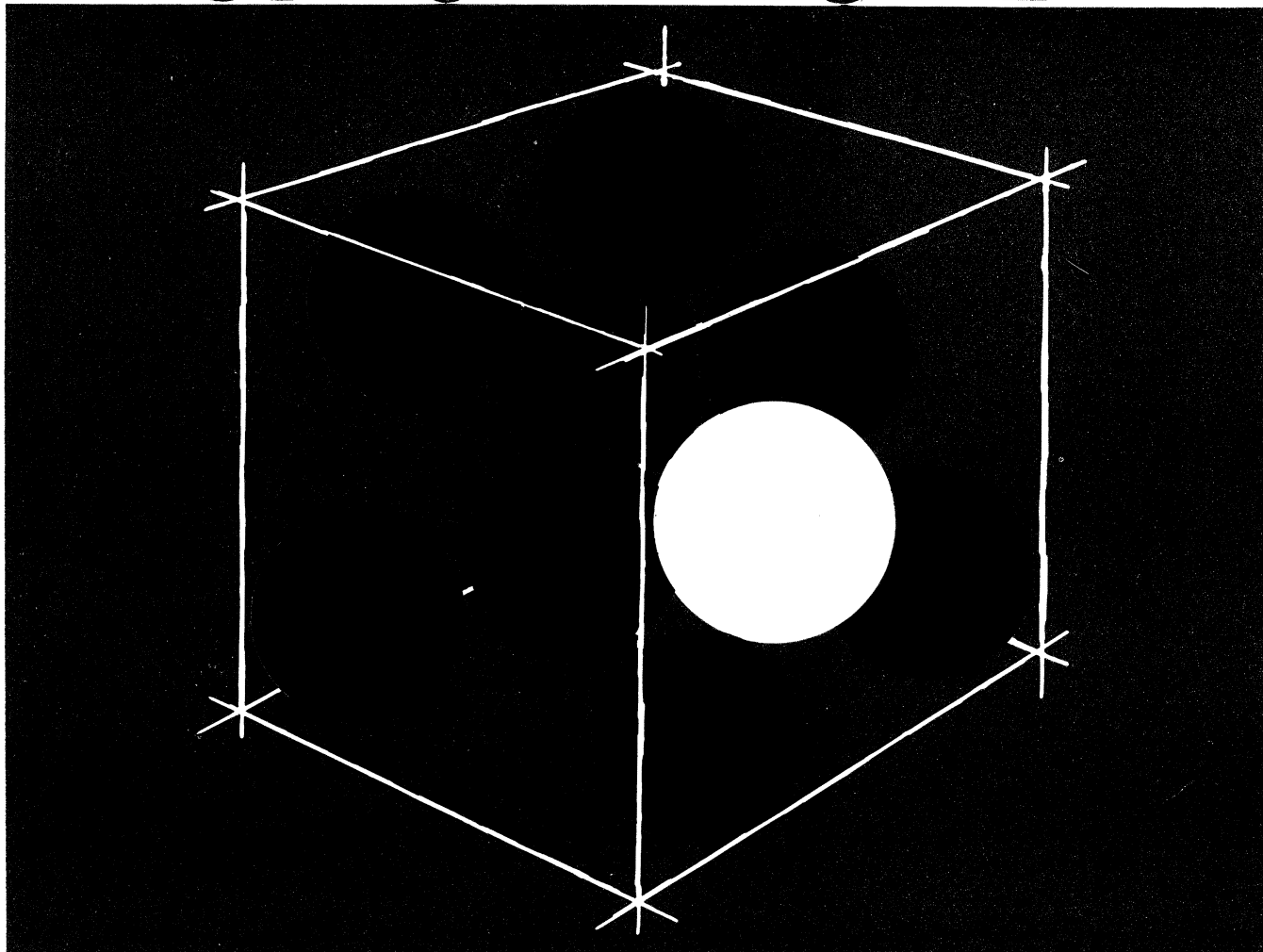
are needed by our library and institutional customers. Please send us lists and description of periodical files you are willing to sell at high market prices. Write Dept. A3S, CANNER'S, Inc. Boston 20, Massachusetts

MAMMALIAN HIBERNATION

Proceedings of the First International Symposium on Natural Mammalian Hibernation. Edited by C. P. LYMAN and A. R. DAWE. 549 pp. Twenty-six papers. Authors include KAYSER, EISENTRAUT, JOHANSSON, SUOMALAINEN, SARAJAS, KALABUKHOV and POPOVIC. Panel discussion by ADOLPH, G. H. BISHOP, FISHER, GRIFFIN, LUYET and PROSSER. \$3.00 paper bound, \$4.50 cloth bound, postage prepaid. Order from Museum of Comparative Zoology at Harvard, Cambridge, Mass.

MELPAR LAUNCHES: PROJECT PROBE

*The Parade of
Disciplines in the
Most Advanced
Areas of the
Physical Sciences*



Today, exploring in all of the physical sciences, Melpar is probing in many areas of fundamental research, such as:

Physical Chemistry, encompassing the relation of physical properties of biological materials to biological functions.

Physical Techniques and Measurements in such fields as electron spin resonance, in conjunction with the studies of molecular structure to determine Zeeman effects on free radicals.

Chemistry Studies in fluorescence, organic reactions, electrochemistry, polymer research, and gas chromatography and radiochemistry.

Why use gas chromatography? Why use electron spin resonance? These represent but a few of the areas Melpar is now exploring. This is Melpar: Project Probe.

Scientists with advanced degrees in any of the Physical Sciences, who are interested in participating in **Melpar: Project Probe**, are invited to write to F. J. Drummond, Professional Placement Manager, Melpar, 3354 Arlington Boulevard, Falls Church, Virginia.

MELPAR  **INC**
A Subsidiary of Westinghouse Air Brake Company



***Now you can meet the rapidly growing requirements
of fluorescence microscopy with
AO's New FLUORESTAR Microscope and Accessories***

A complete FLUORESTAR outfit consists, essentially, of an AO Spencer Microstar equipped with a special dark field stop in the condenser and a barrier filter over the compensating lens in the body; plus an AO Merc-Arc, Osram HBO-200, Illuminator with exciter filter for selective transmission of light rich in ultra-violet. This new AO FLUORESTAR outfit meets the most exacting requirements for dark field fluorescent antibody tests for pathogenic and non-pathogenic organisms.

There are many FLUORESTAR models you can choose from . . . each will give you unequalled convenience and versatility. FLUORESTAR Series 12 and 14 can be used for dark field fluorescence and ordinary bright field microscopy; Series 16 and L16 can be used for dark field fluorescence, phase and ordinary bright field microscopy.

In addition to complete FLUORESTAR outfits, AO offers fluorescence accessories to equip your present AO Spencer bright field or phase microscope for dark field fluorescence.

You can use your present microscope for rapid scanning of exfoliative cytology and related techniques by the simple addition of proper filters and the AO Spencer 390B Illuminator (with AH4 Mercury Arc Lamp).

For complete information on the new FLUORESTAR and complete accessories for fluorescence microscopy write for our new Brochure SB12, or contact your AO Sales Representative. He is thoroughly trained in the techniques of fluorescence microscopy. Help with your specific problems is yours for the asking.



**American Optical
Company**

INSTRUMENT DIVISION, BUFFALO 15, NEW YORK

Dept. O-3

Please forward the new FLUORESTAR Microscope
Brochure SB12

Name

Address

City Zone State