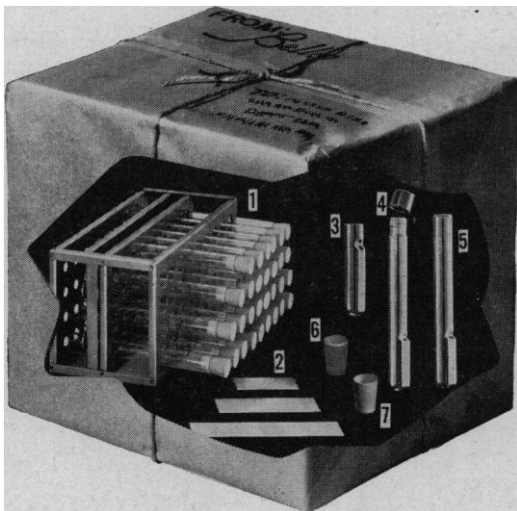


## A PACKAGE UNIT FOR TISSUE CULTURE TUBE STUDIES!



1. Self-locking rack
2. PRECUT cover slides
3. Short type tube
4. Screw cap tube
5. Rubber stoppered tube
6. Rubber stopper
7. Silicone rubber stopper

WRITE FOR COMPLETE DETAILS

**BELLCO GLASS INC.**  
DEPT. 55 — VINELAND, NEW JERSEY

## BIOLOGICAL MANUFACTURING PROCESS DEVELOPMENT ENGINEERING

### WARNER-LAMBERT PHARMACEUTICAL COMPANY

Newly created division offers excellent opportunity for man with three years or more of experience in biological manufacturing. Non-fermentation experience and knowledge of production size lyophilizers mandatory. Degree required in biological sciences or biochemical engineering.

Send résumé with salary requirements to

TECHNICAL RECRUITER  
WARNER-LAMBERT PHARMACEUTICAL CO.  
Morris Plains, New Jersey

## PERSONNEL PLACEMENT

**CLASSIFIED:** Positions Wanted, 25¢ per word, minimum charge \$4. Use of Box Number counts as 10 additional words. Payment in advance is required. Positions Open, \$40 per inch or fraction thereof. No charge for box number.

**COPY** for classified ads must reach SCIENCE 2 weeks before date of issue (Friday of every week).

**DISPLAY:** Rates listed below—no charge for Box Number. Weekly invoices will be sent on a charge account basis—provided that satisfactory credit is established.

Single insertion	\$40.00 per inch
4 times in 1 year	38.00 per inch
7 times in 1 year	36.00 per inch
13 times in 1 year	34.00 per inch
26 times in 1 year	34.00 per inch
52 times in 1 year	32.00 per inch

For PROOFS on display ads, copy must reach SCIENCE 4 weeks before date of issue (Friday of every week).

Replies to blind ads should be addressed as follows:

Box (give number)  
Science  
1515 Massachusetts Ave., NW  
Washington 5, D.C.

### POSITIONS WANTED

(a) **Microbiologist** Ph.D. with college teaching, medical research and clinical supervising experience; available for academic or clinical appointment. (b) **Organic Chemistry** Ph.D., physical chemistry minor; extensive experience in tumor research and endocrinology; prefers research and administrative position. S7-4 Medical Bureau, Inc., Science Division, Burneice Larson, President, 900 North Michigan Avenue, Chicago. X  
**Physiologist-Pharmacologist**; 13 years of experience teaching and pharmaceutical industry. Desires teaching position only anywhere except South. Married, 4 children. Available almost immediately. Box 146, SCIENCE 7/15, 22

### POSITIONS OPEN

#### BACTERIOLOGISTS BIOLOGISTS MEDICAL TECHNOLOGISTS

Parke, Davis & Company has a number of openings in the Detroit area for female bacteriologists, biologists, and medical technologists at the B.S. and M.S. level, to do laboratory work in our research and production facilities. These openings are in virology, bacteriology, biology, antibiotics, immunology, and microbiological assay. Excellent opportunities to advance. Send complete résumé to

Personnel Department  
Parke, Davis & Company  
Detroit 32, Mich.

### SCIENTIFIC WRITER

A writer is required to prepare research and clinical reports for publication. This person must have a good technical background. The position involves the analysis of data and searching the literature for necessary background data. Writing skill is required. Write stating qualifications and salary desired to Personnel Dept., Wyeth, Box 8299, Philadelphia 1.

### POSITIONS OPEN

#### BIOLOGICAL SCIENTIST

Well-known pharmaceutical manufacturer located in Philadelphia has several openings for alert individuals having M.S. or B.S. in the pre-clinical sciences. Position in Science Information Department offers opportunities to work with a wide variety of scientific subjects. Applicants should have good written and oral expression. Liberal benefits. Send complete resume. Box 155, SCIENCE.

#### IMMUNOCHEMIST M.D. or Ph.D.

with training in immunochemistry or immunology. Individual must be capable of carrying out independent basic research studies on properties of the red cell. Some supervisory experience preferred. Send résumé to Employment Manager.

#### ORTHO PHARMACEUTICAL CORPORATION

ROUTE 202, RARITAN, N. J.

Newly Established Scientific Positions at Virginia's Marine Laboratory, **MICROBIOLOGIST**—Ph.D. or equivalent in training and experience in bacteriology/virology to participate in program of expanding marine microbiology department. **ECOLOGIST**—Ph.D. or equivalent in training and experience in marine or freshwater ecology, to study dynamics of marine communities. **PHYSICAL OCEANOGRAPHER**—Ph.D. or equivalent in training and experience in physical oceanography to head program of estuarine and inshore hydrography. Salaries \$6432-\$8040 depending on qualifications. Primarily research with some teaching duties in graduate Department of Marine Science. Director, Virginia Fisheries Laboratory, Gloucester Point. 7/29

## POSITIONS OPEN

(a) **Biochemist** for basic and applied research in carbohydrate metabolism field with leading pharmaceutical firm; high salary, many fringe benefits; Midwest. (b) **Animal Behavior Scientist** for teaching and research at important medical school; Southeast. (c) **Ecology Instructor or Assistant Professor** for teaching and biology research; liberal arts school; Midwest. (d) **Training Director** of all industrial training functions and coordination of services for drug manufacturer; around \$10,000; East. (e) **Bacteriologist** to take charge of active department in 300-bed hospital; California. (f) **Information Scientist**, Ph.D. in pharmacy or chemistry and writing ability; liaison duties and compilation of research data for pharmaceutical firm; around \$10,000; East. (g) **Biochemist** trained in chromatographic and electrophoretic techniques for research center; around \$10,000; Southwest. (h) **Physiology Research Advisor** for coordination of broad rehabilitation program for leading children's center expanding into adult treatment; East. (i) **Advertising Manager** with marketing experience for international division of leading pharmaceutical firm; Midwest. (j) **Biologist** qualified in paraffin and colloidal techniques to prepare slides in large-scale production; around \$8500; Midwest. (k) **Basic Research Scientists** with keen imagination and ability to work independently at research institute; high salaries, fringe benefits; East. S7-4 Medical Bureau, Inc., Science Division, Burneice Larson, President, 900 North Michigan Avenue, Chicago. X

## DIRECTOR QUALITY CONTROL

For nationally known manufacturer of confectionary products. Midwest metropolitan area. Requirements: Ph.D. Food Technology or Chemical Engineering; specialist in food technology, statistical quality control, 4 to 5 years of practical industrial experience.

Superb opportunity for potential Vice President, Research and Development.

Salary: \$15,000 level

Submit complete confidential résumé.  
Box 159, SCIENCE

**Medical Technologist**, blood banking background desirable. Interest in research required. Excellent opportunity to participate in blood group research. Salary open. Mail replies to R. F. Amelang, Milwaukee Blood Center, Inc., Milwaukee, Wis. ew

(a) **Pharmacologist**; M.D. trained internal medicine or Ph.D. pharmacologist as clinical investigator, supervise research of outside investigators; newly created position in prominent midwestern pharmaceutical company; some travel, opportunity for original research if desired, possible university appointment. (b) **Biochemist**; M.S. to supervise section, responsible quality control, institution new procedures, research if desired; 500-bed general hospital; \$6500 or better; vicinity New York City. (c) **Biologist**; teaching experience in bacteriology to have charge of course, northeastern university; minimum \$6000. (d) **Chemist**; Ph.D. to develop procedures, supervise, teach technologists in busy laboratory supervised by two pathologists; 350-bed university-affiliated general hospital; Northwest. (e) **Bacteriologist**; M.S. to head department, very large, fully approved general hospital; eastern city 150,000. (Please write for an analysis form. Out 64th year: Founders of the counselling service to the medical profession; serving medicine with distinction over half a century.) Science Division, Woodward Medical Bureau, Ann Woodward, Director, 185 North Wabash, Chicago. X

## SUPERVISOR

### Biological Control

B.S. degree, major in pharmacology or allied sciences. Experience preferred.

- Good Salary
- Excellent Employee Benefits

Send Résumé to Employment Manager

E. R. SQUIBB & SONS  
New Brunswick, New Jersey

# The Market Place

BOOKS • SERVICES • SUPPLIES • EQUIPMENT

**DISPLAY:** Insertions must be at least 1 inch in depth. Weekly invoices will be sent on a charge account basis—provided that satisfactory credit is established.

Single insertion	\$40.00 per inch
4 times in 1 year	38.00 per inch
7 times in 1 year	36.00 per inch
13 times in 1 year	34.00 per inch
26 times in 1 year	34.00 per inch
52 times in 1 year	32.00 per inch

For PROOFS on display ads, copy must reach SCIENCE 4 weeks before date of issue (Friday of every week).

## BOOKS AND MAGAZINES

### Your sets and files of scientific journals

are needed by our library and institutional customers. Please send us lists and description of periodical files you are willing to sell at high market prices. Write Dept. A3S, CANNER'S, Inc., Boston 20, Massachusetts

## PROFESSIONAL SERVICES



**LABORATORY SERVICES**  
for the  
**FOOD and DRUG INDUSTRIES**  
Drug Evaluation, Food Additive Studies  
Chemical and Biological Assays,  
Clinical Studies, Research

**LAWALL & HARRISON**

D.v. S. 1921 Walnut St. Philadelphia 3 Pa. LO 3 4322

## SUPPLIES AND EQUIPMENT



**GRA LAB INTERVAL TIMER** Automatic signalling and switching over unusually wide range of 3600 possible settings.  
**GRA LAB MICRO TIMER** 1/10 sec. or 1/1000 min. stop clock. Remote start stop control. Write for catalog.

**DIMCO-GRAY COMPANY**  
214 E. SIXTH ST., DAYTON 2, OHIO

### • HYPOPHYSECTOMIZED RATS

Shipped to all points via Air Express  
For further information write  
**HORMONE ASSAY LABORATORIES, Inc.**  
8159 South Spaulding Ave., Chicago 29, Ill.

### Miniature, All-Purpose CALCULATOR

A precision instrument that will do all the calculations of larger expensive desk models. Weighs only 8 oz. Fits Hand. Fast, accurate, sturdy... completely portable. Ideal for all on-the-spot calculating. Fully guaranteed. Write for Free literature, prices, name of nearest dealer.  
**THE CURTA COMPANY** Dept. 55  
14435 Cokesett St. Van Nuys, Calif.



### KYNURAMINE

A New Monamine Oxidase Standard

Reprint on Request

**REGIS Chemical Company**

1219 N Wells Street Chicago 10, Illinois

## SUPPLIES AND EQUIPMENT

**LIGHT SOURCES, Special PEN-RAY:** Tiny size, far ultraviolet 6.5mm Dia. 1/2" and 2 1/2" lengths. **MINERALIGHT:** Far & Near UV. 10 models.

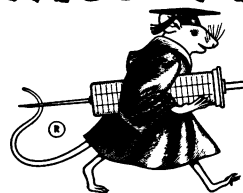
**BLAK-RAY:** Near UV. 22 models. **CHROMATO-VUE:** Complete unit. View Chromatograms—Far and Near UV. No Darkroom Needed.

Hg 198, High Resolution, Super High Intensity Sources

Write for Catalogs

**Black Light Eastern Corp.** Dept. SE-1  
4 Manhasset Ave., Port Wash., N.Y.

## SWISS MICE



Send for booklet

**TACONIC FARMS**

GERMANTOWN NEW YORK

## MICROSCOPISTS

Medical and Scientific Technicians

SAVE \$80.00

**APOCHROMATIC Microscope**  
Objective: Bausch & Lomb # 31-11-28, Dry, 8.3 mm. 20X N.A. 0.65—Guaranteed MINT NEW:

**ONLY \$59.00 EACH**  
Today's comparable list price is \$139.00  
Strictly limited stock. Remittance MUST come with order.

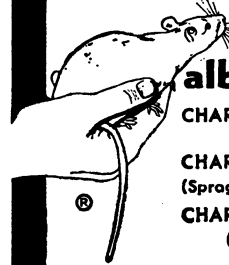
**Scientific & Laboratory App.**  
Harry Ross, 61-C, Reade Street, N.Y. 7, N.Y.

## YOU NEED THIS FREE CATALOG FOR YOUR FILES

Serums, antisera and bloods of all kinds for technicians and tissue culture laboratories. No salesman will call.

**COLORADO SERUM CO.**  
4950 York St. • MAIN 3-5373 • Denver 16, Colo.

"From the hand of the veterinarian to research"®



### albino rats

**CHARLES RIVER CD**  
(Caesarean derived)  
**CHARLES RIVER SD**  
(Sprague-Dawley descendants)  
**CHARLES RIVER W**  
(Wistar descendants)

### HYPOPHYSECTOMIZED RATS

- Only Charles River CD animals used
- Rigidly controlled environment (same bldg.) birth to surgery.
- High speed surgery by graduate biologists.
- 10 years experience animal surgery.
- Overnight air service from Boston

### THE CHARLES RIVER BREEDING LABS

1018 Beacon St., Brookline 46, Mass. RE. 4-2000  
Henry L. Foster, D.V.M., President

GET READY FOR THE SPACE and SCIENCE ERA! SEE SATELLITES. MOON ROCKETS CLOSE UP



# AMAZING SCIENCE BUYS

for FUN, STUDY or PROFIT



## American Made — Terrific Buy!

### Over 50% Saving STEREO MICROSCOPE



Years in development. Equals \$300 to \$400 instrument. Precision American made. Used for checking, inspecting, small assembly work. Up to 3" working distance. Clear, sharp, erect image. Wide, 3 dimensional field. 2 sets of objectives on rotating turret. 23X and 40X. 10 Days Free Trial.

Stock No. 85,056-W .....\$99.50  
f.o.b. Barrington, N.J.

Low Power Supplementary Lens Attachment for above Stereo—provides 15X down to 6X with clear, extra large 1 1/4" field at 6X.

Stock No. 30,276-W .....\$7.50



Photographers! This is an actual photograph of the moon taken through our Astronomical Telescope by a 17-year student.

## See the Stars, Moon, Planets Close Up!

### 3" ASTRONOMICAL REFLECTING TELESCOPE

60 to 180 Power. An unusual Buy! Famous Mt. Palomar Type

You'll see the Rings of Saturn, the fascinating planet Mars, huge craters on the Moon, Star Clusters, Moons of Jupiter in detail. Galaxies! Equatorial mount with lock on both axes. Aluminized and over-coated 3" diameter high-speed f/10 mirror. Telescope comes equipped with a 60X eyepiece and a mounted Barlow Lens, giving you 60 to 180 power. An Optical Finder Telescope, always so essential, is also included. Sturdy, hardwood, portable tripod—FREE with Scope—Valuable STAR CHART plus 272 page "HANDBOOK OF HEAVENS" plus "HOW TO USE YOUR TELESCOPE" BOOK.

Stock No. 85,050-W .....\$29.95 Postpaid

4 1/2" Reflecting Telescope—up to 255 Power  
Stock No. 85,006-W .....\$74.50 F.O.B. Barrington, N.J.

## NEW! GRAPH RUBBER STAMP

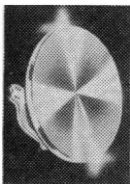


Solves problem of recording graphed material neatly in engineering notebooks, reports, correspondence, etc. without using bulky sheets of graph paper. Simply stamp a clear graph pattern wherever needed. Use for electronic design, development and research records—plotting various curves from analytical data and math formulae—drawing curves from oscilloscope screens, etc. For all engineers sales mgrs. production control. Pattern is 100 blocks per sq. in.

No. 50,255-W (3" square) .....\$3.00 Postpaid

Order by Stock No.—Check, M.O. or Open Account  
Money-back Guarantee.

## OFFSPRING OF SCIENCE . . . REALLY BEAUTIFUL! CIRCULAR DIFFRACTION- GRATING JEWELRY



Shimmering rainbows of gemlike color in jewelry of exquisite beauty—made with CIRCULAR DIFFRACTION-GRATING REPLICAS. Just as a prism breaks up light into its full range of individual colors, so does the diffraction grating. Promises to become a rage in current fashion.

Stock No. 30,349-W Earrings .....\$2.75 Postpd.

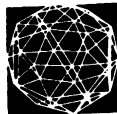
Stock No. 30,350-W Cuff Links .....\$2.75 Postpd.

Stock No. 30,372-W Pendant .....\$2.75 Postpd.

Stock No. 30,373-W 2 Pins .....\$2.75 Postpd.

Stock No. 30,390-W Tie-Clasp .....\$2.75 Postpd.

## D-STIX CONSTRUCTION KITS For Scientists, Teachers



Scientists, teachers, planners—let D-STIX help you visualize and crystallize complex ideas. Colored wood sticks 1/8" thick and "easy-on" rubber joints approx. 3/16" diam. fit together fast—help you work out molecular structures, geometric figures, structural members, shapes, models of scientific apparatus. Ideal for "3-dimensional thinking," instruction, demonstration. Durable kits. Money-back guarantee.

Stock No. 70,210-W (370 pcs) .....\$5.00 Postpd.

Stock No. 70,211-W (452 pcs) .....\$7.00 Postpd.

## NEW BINOCULAR-TO-CAMERA HOLDER

Will Fit Any Camera



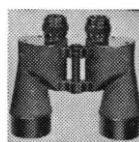
For Exciting Telephoto Pictures. Bring distant objects 7 times nearer with a 35mm camera, 7x50 binocular and our NEW BINOCULAR-TO-CAMERA HOLDER. Ideal for long-range shots of wild life, ships, people, vistas. Camera and binoculars attach easily. Use any binocular or monocular—any camera, still

or movie. Take color or black and white. Attractive gray crinkle and bright chrome finish. 10" long. Full directions for taking telephotos included.

Stock No. 70,223-W .....\$11.50 Postpaid

## War Surplus American-Made 7x50 Binoculars

Big savings! Brand new! Crystal clear viewing—7 power. Every optical element is coated. An excellent night glass—the size recommended for satellite viewing. Individual eye focus. Exit pupil 7mm. Approx. field at 1,000 yds. is 376 ft. Carrying case included. American 7 x 50's normally cost \$105. Our war surplus price saves you real money.



Stock No. 1533-W .....Only \$55.00 Postpd.  
(Tax included)

## Terrific Buy! American Made! OPAQUE PROJECTOR

Projects illustrations up to 3" x 3 1/4" and enlarges them. No film or negatives needed. Projects charts, diagrams, pictures, photos, lettering in full color or black-and-white. Operates on 115 volt. A.C. current. 6-ft. extension cord and plug included. Operates on 60 watt bulb, not included. Size 12" x 8" x 4 1/2" wide. Weight 1 lb., 2 oz. Plastic case with built-in handle.



Stock No. 70,199-W .....\$7.95 Postpaid



## Take Telephoto Shots Thru 7 x 50 MONOCULAR

This is fine quality. American made instrument—war surplus! Actually 1/2 of U.S. Govt. 7 x 50 Binocular. Used for general observation both day and night and to take fascinating telephoto shots with your camera. Brand new, \$85 value. Due to Japanese competition we close these out at a bargain price. Directions and mounting hints included.

Stock No. 50,003-W .....\$15.00 Postpaid



## LIFE SIZE HUMAN SKULL

Invaluable educational aid! Fascinating conversation piece! Skull is anatomically correct—made of natural bone color, bone hard, lifetime plastic. Parts snap together—take apart. Spring-action lower jaw. Removable skull cap for examination of skull cavity, nasal passages, etc. Ideal for scientists, doctors, dentists, teachers, students, artists. Stand and Instruction and Anatomy Chart included.

Stock No. 70,294-W .....\$4.95 Postpaid

## SCIENTIFIC ENCYCLOPEDIA

Over 1800 pages! 1400 illustrations—over 2,000,000 words—100,000 definitions—14,000 separate articles. If you're science-minded—you'll drool over it! Wealth of useful information on Science, Math, Engineering, Chemistry, Physics, etc. 8 1/2 lbs—size 9" x 11".

Stock No. 9287-W .....\$29.75 Postpaid

## BEGINNER'S LENS KITS!

### FOR FOR ADULTS! FUN FOR CHILDREN!

Kits include plainly written, illustrated booklet showing how you can build lots of optical items.

Stock No. 2-W Beginner's Kit,

10 Lenses .....\$ 1.00 Postpd.

Stock No. 5-W Gadgeteer's Delight,

45 Lenses .....\$ 5.00 Postpd.

Stock No. 10-W Experimenter's Dream,

50 Lenses .....\$10.00 Postpd.

## WAR SURPLUS!—INFRARED SNOOPERSCOPE

Govt. Cost \$900—Bargain at \$39.50

Converts infrared to visible light. See in total darkness without being seen. Use in lab, factory, classroom, etc. Completely portable. Operates on two flashlight batteries (not included). Image is quite good, may be made even better by careful focusing. Size 11 1/2" x 8". Weight with carrying case 12 lbs. No infrared light source is furnished. (See below).



Stock No. 85,098-W .....\$39.50 f.o.b. Barrington, N. J.

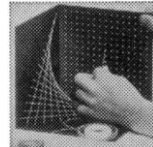
## INFRARED LIGHT SOURCE AVAILABILITY!

Uses 6-volt transformer or 6 V auto battery to operate.

Stock No. 80,035-W .....\$10.00 Postpaid

## 3-D DESIGN WITH SPACE SPIDER

Create 3-dimensional colored designs that "float in space" simply by weaving fluorescent strands between different planes of "shadow box." Design abstractions, plane and solid geometrical figures. Demonstrate equations x, y and z planes. Visualize engineering concepts. For home decoration or educational use. "Black Light" the design and create incredibly beautiful sight. Kit contains 3 black notched wood panels (the background), each 6 1/4" sq., 3 reels fluorescent thread, black clips, needle, instruction booklet.



Stock No. 70,278-W .....\$2.95 Postpaid

SPECIAL! Set of 6 Space Spiders!

Stock No. 70,297-W .....\$10.95 Postpaid

NOTICE: EDMUND IS NOW HEADQUARTERS FOR MATH LEARNING AND TEACHING AIDS! SEE OFFERINGS IN OUR FREE CATALOG—"W"

## NEW! CIRCULAR SLIDE RULE!

Pocket Size—  
Fast—Easy to Use!

Be a Math Wiz! New Circular Slide Rule multiplies, divides, figures fractions, percentages, squares, cubes, roots, proportions, circumferences, areas, retail prices, fuel consumption. Eliminates the confusions of ordinary slide-rules. Directions included.



Stock No. 30,336-W .....\$4.95 Postpaid

# FREE CATALOG!

Optics for the Science Class!  
Optics for the Space Era!

128 PAGES! OVER  
1000 OPTICAL BUYS!

Huge selection of lenses, prisms, war surplus optical instruments, parts and accessories. Telescopes, microscopes, binoculars, infrared sniperscope, etc. Low-cost Science and Math Learning and Teaching aids.

Request Catalog W.

Easy Payment Plan Available! Details with Catalog!



ORDER BY STOCK NUMBER . SEND CHECK OR MONEY ORDER . SATISFACTION GUARANTEED!

# EDMUND SCIENTIFIC CO., BARRINGTON, NEW JERSEY

*a new concept in Fluorometer-Nephelometer design . . .*

## Turner FLUOROMETER

**Full Scale Reading  
(100 Divisions)  
with only  
5 PARTS per BILLION  
Quinine Sulphate**



- ▶ Four-watt u.v. lamp minimizes sample deterioration
- ▶ Resolves 0.01 ppm silica when used as a nephelometer

A compact, stable instrument for quantitative fluorescence analysis, simple in operation and with extremely high sensitivity, i.e. 5 parts per billion quinine sulphate produces full scale (100 divisions) change on most sensitive range. Can also be used as a nephelometer to resolve as little as 0.01 APHA standard turbidity unit. Range selector provides for reducing the sensitivity if required.

Sample emission is determined by manually balancing its effect with that of a reference beam from the same light source upon a single photomultiplier tube, employing a rotating light interrupter to pass sample and reference beams alternately. Difference in relative a.c. detector output, amplified by a highly stable first stage, is sensed by a phase shift detector and fed to a null-type meter. Intensity of reference beam is regulated by a linear cam in the light path, which permits calibration in terms of 100 equal divisions on the "Fluorescence" dial. Design eliminates dark current effects; light source, detector and line voltage variations; and zero point error.

Takes 2-inch square filters for operation at 405, 436 or 546 mμ with 4-watt lamp and various secondary filters. Requires 2.5 to 4 ml samples in either standard test tubes, 10 to 12 mm inside diameter, or in 10 mm square cuvettes.

Adequate 3600Å u.v. excitation is obtained with only 4-watt lamp output, thereby minimizing sample deterioration by light or heat. Interchangeable lamp (254 mμ), quartz cuvettes and special filters are available for 2537Å operation.

**Fluorometer, Turner**, complete outfit with general purpose accessories for 3600Å operation, consisting of set of five matched cuvettes 75 x 12 mm, primary filter 360 mμ, secondary filter 415 mμ, spare 4-watt ultraviolet lamp, and service manual; for 115 volts, 50 or 60 cycles, a.c. . . . . **985.00**

**Square Cuvette**, of Pyrex brand glass, precision bore, 75 x 10 mm; only accessory required for nephelometry . . . . . **10.00**

**Uranium Pellet Door**, interchangeable with standard door. Standard fusion pellets drop into place and can be ejected by a spring device. . . . . **45.00**

### Applications

agronomy  
air pollution  
biochemicals  
clinical analyses  
crime analyses  
drugs  
essential oils  
fine chemicals  
food chemistry  
hormones  
industrial hygiene  
medical research  
metals  
petroleum  
pharmaceuticals  
semiconductor  
research  
toxicology  
trace analyses  
water contaminants  
etc., etc.

*Detailed descriptive bulletin sent upon request.*



## ARTHUR H. THOMAS COMPANY

*More and more laboratories rely on Thomas / Laboratory Apparatus and Reagents*

**VINE ST. AT 3RD • PHILADELPHIA 5, PA.**