

## Letters

(Continued from page 1858)

specific activity is blood-group activity. I hope that this will make clear that the use of this technique does not assume that blood-group activity should be associated with any sugars other than those found in human blood-group mucoids; as Springer points out, this assumption would be entirely unjustifiable.

The leaching process in soil is significant in that the blood-group substance remaining for analysis in buried bodies may only be the alcohol-soluble fraction. This elementary but important point is often ignored in the published techniques. While I am in complete agreement with the points made by Springer, I should like to draw attention to the absence of evidence on rates of decay of the blood-group substances in bodies buried under varying conditions and for varying periods.

MADELEINE SMITH  
Serological Laboratory, British Museum  
(Natural History), London

### The Makara in Ceylon

In your issue of 22 April [*Science* 131, 1176 (1960)], Millard B. Rogers, in the article "An archeological pilgrimage to Santiago de Compostela," states that "the *makara* occurs in the earliest monumental sculptures of India, as early as the 3rd century B.C."

*Makara* scrolls are well known in the ancient ruined cities of Ceylon, chiefly Anuradhapura and Polonnaruwa, where these scrolls generally occur as the rails of the balustrades beside entrance steps to what little is left of the ancient buildings. The buildings, and hence the *makara* scrolls, can seldom be precisely dated, however. Anuradhapura was the capital of Ceylon from the 5th century B.C. to the 9th century A.D., but it is likely that its great period of sculpture began when Mahinda, son of the Indian emperor Asoka, brought the Buddhist doctrines to Ceylon about the middle of the 3rd century B.C. Polonnaruwa, which with considerable fresh Indian influence continued the Anuradhapura traditions of sculpture, was the medieval capital of Ceylon.

N. A. FORDE  
1115 Stanwood Street,  
Philadelphia, Pennsylvania

N. A. Forde's letter to the editor concerning my article is a bit ambiguous, for it neither disproves my hypothesis nor supports it. For those concerned with Far Eastern archeology it simply repeats what we already know.

There is one point, however, that should be clarified. Forde's implication that traditional dates concerning religious sites should be applied to artifacts found at the sites without supporting evidence is most unsound, and I feel that I should reply to this point.

It is true that the *makara* occurs in Ceylon and in all other countries where Buddhism and Hinduism were introduced. There is, so far as I know, no evidence that any existing sculptures in Ceylon can be assigned with certainty to Asokan times, and the earliest Sinhalese *makara* is one reproduced by D. T. Devendra [*Classical Sinhalese*

*Sculpture* (London, 1958), Fig. 42]. There is a rich literature on Sinhalese archeology, of which the *Annual Reports of the Archaeological Survey of Ceylon* (1884 to date) form the core.

Since the tradition of the *makara* in literature predates the earliest known *makara* by several centuries, I would not be surprised if one day pre-Buddhist *makara* were identified in India. It is less likely that any very early *makara* will ever be discovered in Ceylon.

MILLARD B. ROGERS  
Seattle Art Museum,  
Seattle, Washington

## ISOLATE CHROMATOGRAPH FRACTIONS QUICKLY, ACCURATELY

### HAMILTON FRACTION COLLECTOR



You can isolate exceedingly pure gas chromatograph fractions for supplemental analysis with this *single* instrument—the Hamilton Fraction Collector! It uses the "Freeze-Out" method of fraction collection, capturing the sample in a U tube on ultra pure silica sand chilled to liquid nitrogen temperatures... *providing up to 98% plus recovery!*

- Rapid, easy, one stroke operation
- Available with heated line for high boiling fractions
- 10 second preparation; samples at 5 second intervals
- Unlimited fractions from single run
- Economical fraction containers, no stopcocks, need no grease



Order direct, or write today for literature and prices.  
Also available through your supply house.

**HAMILTON COMPANY, INC.**  
P. O. Box 307-K Whittier, California

PRECISION MEASURING EQUIPMENT FOR CLINICAL AND MEDICAL RESEARCH

# PERSONNEL PLACEMENT

**CLASSIFIED:** Positions Wanted, 25¢ per word, minimum charge \$4. Use of Box Number counts as 10 additional words. Payment in advance is required. Positions Open, \$40 per inch or fraction thereof. No charge for box number.

**COPY** for classified ads must reach SCIENCE 2 weeks before date of issue (Friday of every week).

**DISPLAY:** Rates listed below—no charge for Box Number. Weekly invoices will be sent on a charge account basis—provided that satisfactory credit is established.

Single insertion	\$40.00 per inch
4 times in 1 year	38.00 per inch
7 times in 1 year	36.00 per inch
13 times in 1 year	34.00 per inch
26 times in 1 year	34.00 per inch
52 times in 1 year	32.00 per inch

For PROOFS on display ads, copy must reach SCIENCE 4 weeks before date of issue (Friday of every week).

Replies to blind ads should be addressed as follows:

Box (give number)  
Science  
1515 Massachusetts Ave., NW  
Washington 5, D.C.

## POSITIONS WANTED

**Animal Geneticist**, Ph.D., M.S. reproductive physiology, B.S. animal husbandry. Desires teaching position. Frank J. Rice, Box 810, Miles City, Mont. X

**Biochemist**, Ph.D. 1951, academic and industrial research in enzymes, natural products, metabolic regulation, administrative experience, presently employed, seeks responsible position in industry. Box 141, SCIENCE. X

**Biochemist**, Ph.D., male, 34. Four years' postdoctoral research in enzymology and intermediary metabolism in major European and American laboratories. Desires research position and/or teaching and research. Box 139, SCIENCE. 7/1

**Editorial Assistant**. Desires position on eastern medical publication; 14 years' experience. Available Fall. Box 140, SCIENCE. X

## POSITIONS OPEN

**Biochemist or Physiologist** for endocrine research laboratory. M.S. or B.S. plus several years' experience in hospital and/or medical research laboratory preferred. Responsible position, excellent salary, and opportunity to work toward higher degree. Apply Personnel Office, Indiana University Medical Center, 1100 West Michigan, Indianapolis. 6/24; 7/1, 8

### BIOCHEMIST

Ph.D.—to develop processes for preparation of radioactive labeled compounds using biological synthesis techniques. Opportunity to participate in growth of country's outstanding radiochemical manufacturing company.

NEW ENGLAND NUCLEAR CORP.  
575 Albany Street, Boston, Mass.

**Medical Technologist**, blood banking background desirable. Interest in research required. Excellent opportunity to participate in blood group research. Salary open. Mail replies to R. F. Ambelang, Milwaukee Blood Center, Inc., Milwaukee, Wis. ew

### Important Notice

Effective 1 September 1960

Rates net—No agency commission

No cash discount

Minimum ad: 1 inch. Ads over 1 inch will be billed to the nearest quarter inch.

Frequency rate will apply only to repeat of same ad. No copy changes.

## POSITIONS OPEN

### EXPERIMENTAL BIOLOGIST

Ph.D. or equivalent to work in experimental pathology department. Knowledge of microscopic anatomy and experimental therapeutics desirable. Research opportunity. Staff addition. Industrial pharmaceutical research. Northeastern United States.

Box 129, SCIENCE

**Histologist-Histochemist**, Ph.D. or equivalent. Research institute, New York. Modern well-equipped and staffed air-conditioned laboratory. Opportunity for training in electron microscopy. Address replies to Box 137, SCIENCE. 6/24; 7/1, 8

**Science Teachers, Librarians, Administrators** urgently needed for positions in many states and foreign lands. Monthly non-fee placement journal since 1952 gives complete job data, salaries. Members' qualifications and vacancies listed free. 1 issue, \$1. Yearly (11 issues) membership, \$5 individual; \$10 institutional. CRUSADE, SCI., Box 99, Station G, Brooklyn 22, N.Y. eow

**Virologist and Tissue Culturist** to practice in tumor virus program. Please state experience and salary desired. Box 142, SCIENCE. 7/1

(a) **Virologist-Tissue Culturist**: trained, experienced Ph.D. to join newly organized eastern research group; problems relating tumor viruses; new building, superior facilities. (b) **Biochemist**: Ph.D. to supervise medical school research and diagnostic cardiac laboratory; duties principally investigative, some training, teaching required; to \$9000; university, cultural center; Midwest. (c) **Microbiologist**: B.S., M.S., prefer tissue culture or virology training; research, some teaching; graduate study opportunity; eastern university medical school. (d) **Biochemist**: Ph.D. experienced clinical chemistry, supervise laboratory busy West Coast teaching hospital; about \$10,000. (Please write for an analysis form. Our 64th year: Founders of the counselling service to the medical profession: serving medicine with distinction over half a century.) Science Division, Woodward Medical Bureau, Ann Woodward, Director, 185 North Wabash, Chicago. X

## The Market Place

BOOKS • SERVICES • SUPPLIES • EQUIPMENT

**DISPLAY:** Insertions must be at least 1 inch in depth. Weekly invoices will be sent on a charge account basis—provided that satisfactory credit is established.

Single insertion	\$40.00 per inch
4 times in 1 year	38.00 per inch
7 times in 1 year	36.00 per inch
13 times in 1 year	34.00 per inch
26 times in 1 year	34.00 per inch
52 times in 1 year	32.00 per inch

For PROOFS on display ads, copy must reach SCIENCE 4 weeks before date of issue (Friday of every week).

## BOOKS AND MAGAZINES

### Your sets and files of scientific journals

are needed by our library and institutional customers. Please send us lists and description of periodical files you are willing to sell at high market prices. Write Dept. A3S, CANNER'S, Inc. Boston 20, Massachusetts

## PROFESSIONAL SERVICES



**LABORATORY SERVICES**  
for the  
**FOOD and DRUG INDUSTRIES**  
Drug Evaluation, Food Additive Studies  
Chemical and Biological Assays,  
Clinical Studies, Research

**LAWALL & HARRISON**  
Div. S, 1921 Walnut St., Philadelphia 3, Pa. LO 3-4322

## SUPPLIES AND EQUIPMENT



**CAESAREAN-DERIVED**  
**Mice**

CHARLES RIVER CD-1  
HYPOPHYSECTOMIES  
THE CHARLES RIVER MOUSE FARMS  
Div. of The Charles River Breeding Labs  
P. O. Box P Brookline 46, Mass

Do You Need:

### Cellex Cellulose Ion Exchangers?

(For fractionation of proteins, nucleic acids, and enzymes)  
ASK FOR PRICE LIST SCX

**BIO-RAD Laboratories**

32nd & GRIFFIN AVE. • RICHMOND, CALIFORNIA

### • HYPOPHYSECTOMIZED RATS

Shipped to all points via Air Express  
For further information write

HORMONE ASSAY LABORATORIES, Inc.  
8159 South Spaulding Ave., Chicago 29, Ill.

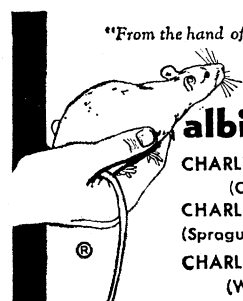
YOU NEED THIS **FREE**  
CATALOG FOR YOUR FILES

Serums, antisera and bloods  
of all kinds for technicians and tissue  
culture laboratories. No salesman will call.

**COLORADO SERUM CO.**

4950 York St. • MAin 3-5373 • Denver 16, Colo.

"From the hand of the veterinarian  
to research"®



### albino rats

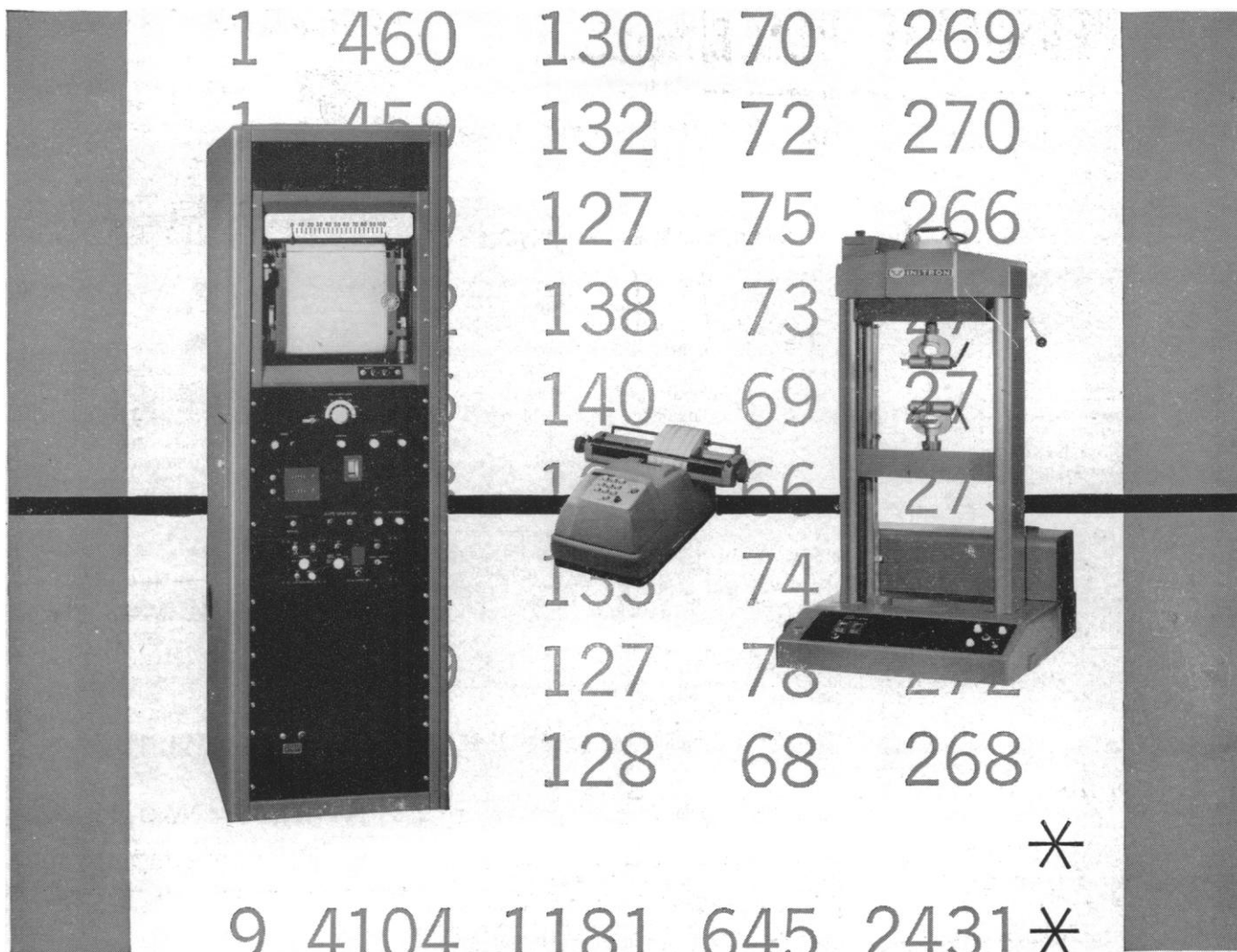
CHARLES RIVER CD  
(Caesarean derived)  
CHARLES RIVER SD  
(Sprague-Dawley descendants)  
CHARLES RIVER W  
(Wistar descendants)

### HYPOPHYSECTOMIZED RATS

- Only Charles River CD animals used
- Rigidly controlled environment (same bldg.) birth to surgery.
- High speed surgery by graduate biologists.
- 10 years experience animal surgery.
- Overnight air service from Boston

### THE CHARLES RIVER BREEDING LABS

Dept. B, 1093 Beacon Street, Brookline 46, Mass.  
Henry L. Foster, D.V.M., President



*Announcing a unique achievement in the field of quality control and statistical testing . . .* **THE NEW INSTRON DYNAMIC DIGITAL SYSTEM**

INSTRON'S new dynamic digital system brings dramatic savings in time and work to the field of materials testing. For the first time, tests can be conducted and recorded at high speed without the need for time-consuming chart evaluation.

This new system selects values of desired characteristics from the load-elongation curve of the material being tested, stores the information in magnetic-core memory units and, on completion of the test, prints them out on a special high-speed serial-entry printer. Total time required for a complete test and printing of results is less than 15 seconds.

The digital system can be programmed to convert extension, energy, load or stress, modulus, yield point, hysteresis and other parameters directly into numerical values, in any units desired. The fast, efficient printer delivers in-

formation in ready-to-use form, also provides for totalizing. Digital INSTRON equipment, field tested for over two years, more than doubles testing output. The time-saving features of this system allow larger samplings for more mean-

ingful results. Errors in reading charts and writing down data are eliminated. All the operator does is place the sample in the jaws and push a button. The system does the rest.

Think about it. Here are new possibilities in volume testing, quality control and statistical analysis. Here is a new system to bridge the gap between manual tabulation of data and high-cost computer operations. Here is the opportunity to do more . . . find out more . . . do it more accurately . . . in less time.

We invite you to send for full information. Just write:



The system shown here combines the new digital printout system with an optional strip-chart recorder. Thus, it's two machines in one — offering printed figures for statistical analysis plus the actual corresponding curve for detailed visual study of materials characteristics.



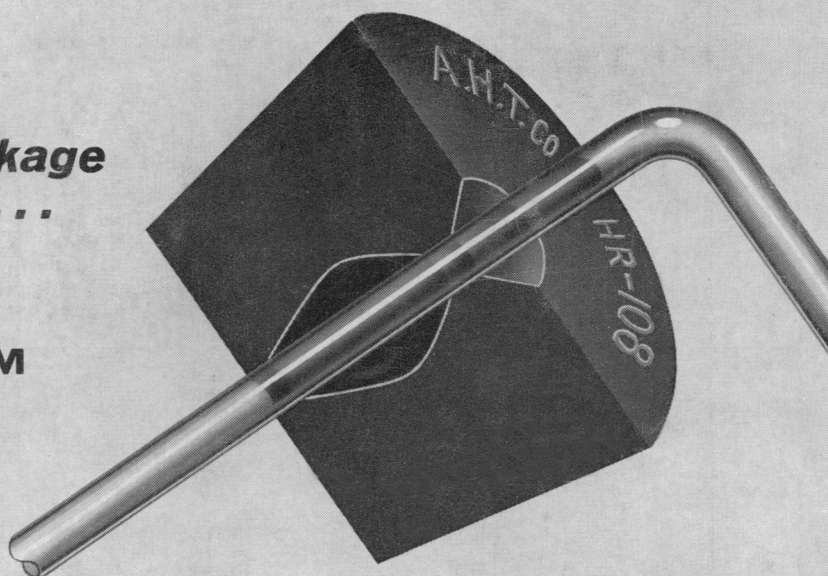
**INSTRON**



ENGINEERING CORPORATION  
2513 WASHINGTON STREET, CANTON, MASS.

**to minimize  
glass breakage  
specify . . .**

**FUSIFORM  
BORE**



# Thomas SAFETY STOPPERS

THOMAS HR-108 SAFETY STOPPERS are of bloomless, black, resilient, heat resisting composition, with low sulfur content and long life. Straight bore of the conventional stopper has been replaced by a fusiform bore with bevelled entrance. Internal diameter at center approximately twice that of a sealing band at either end. Offer the following advantages:

**SAFETY**—Glass tubes can be easily inserted and removed, *particularly by students*, with greater safety than with straight bore. Insertion is facilitated by the bevelled entrance of the bore, and the tube slides through only the two sealing bands.

**LARGER TUBES**—Fusiform bore permits insertion of larger tubes than is possible with straight bore. For example, tubes 6 to 11 mm can be inserted in sizes 5 to 9 incl.

**SUPERIOR COMPOSITION**—The stock contains *more than 70% of pure virgin gum*, possesses great elasticity, is free from surface sulfur and contains less than 0.75% free sulfur; no reclaimed rubber is used.

**HEAT RESISTANT**—Temperatures *up to 110°C* do not affect shape, size or structure.

**LONG LIFE**—Tests indicate useful life approximately *five times* that of common stoppers.

**8807. Safety Stoppers, Thomas HR-108, as above**  
described, one hole (fusiform bore).

Size Number	Approx. no. per lb.	Carton Contains	Per Dozen	Per Carton
00	170	168	1.24	15.81
0	111	108	1.27	10.36
1	97	96	1.38	10.02
2	74	72	1.48	8.07
3	55	60	1.67	7.60
4	44	48	1.81	6.60
5	37	36	2.02	5.52
5½	31	36	2.18	5.94
6	27	30	2.33	5.29
6½	24	30	2.49	5.68
7	20	24	2.77	5.05
8	16	18	3.12	4.26
9	13	18	3.64	4.97

**8808. Safety Stoppers, Thomas HR-108, as above**  
described, but two hole.

Size Number	Approx. no. per lb.	Carton Contains	Per Dozen	Per Carton
00	169	168	1.34	17.04
0	110	108	1.37	11.23
1	95	96	1.48	10.78
2	74	72	1.58	8.65
3	55	60	1.79	8.15
4	46	48	1.87	6.79
5	38	36	2.04	5.58
5½	33	36	2.28	6.23
6	28	30	2.42	5.52
6½	25	30	2.56	5.81
7	20	24	2.83	5.15
8	17	18	3.16	4.31
9	14	18	3.60	4.92

5% discount from carton prices in lots of 6 cartons; 10% discount from carton prices in lots of 12 cartons  
20% discount from carton prices in lots of 24 cartons; 30% discount from carton prices in lots of 48 cartons  
one size, or assorted in carton units

For more detailed description, see pages 1066 to 1068 of our general catalog



**ARTHUR H. THOMAS COMPANY**

More and more laboratories rely on Thomas / Laboratory Apparatus and Reagents

VINE ST. AT 3RD • PHILADELPHIA 5, PA.