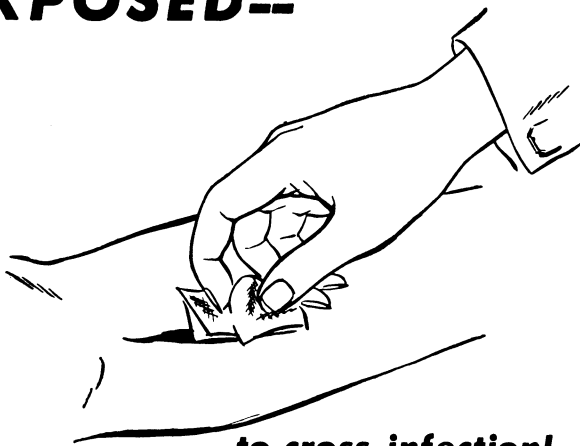


EXPOSED--



... to cross-infection!

Hands—most active in distribution of STAPH! Unless hands are washed after each patient contact, they are dangerous cross-infection carriers. Every dressing . . . every lesion . . . every collection of specimen, blood, sputum, etc. requires hand service.

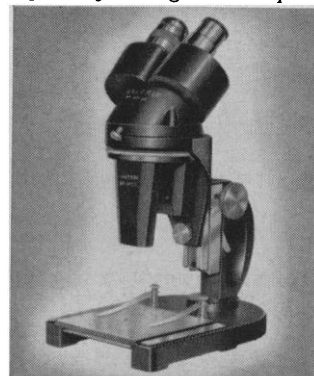
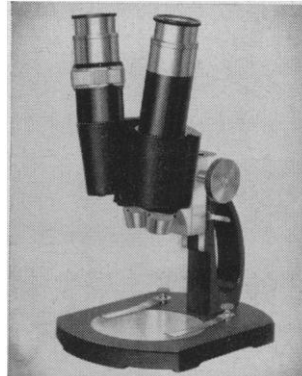
Eliminate contact! Use the modern pressure-sensitive TIME Labeling Tape. Break the chain of cross-infection of STAPH, TB and Hepatitis!

A qualified consultant will teach you the effective TIME labeling procedure. It's your first step to a safer hospital. Write today! Dept. RH

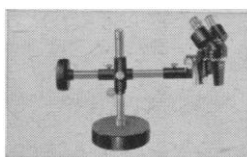
PROFESSIONAL TAPE CO., INC.
355 Burlington Ave. Riverside, Ill.

NEW UNITRON stereo microscopesas low as \$110

Both models offer . . . sharp clear erect image • large depth of focus • wide field • long working distance • interpupillary and diopter adjustments • rack and pinion focusing • coated optics



MSL — a precision, budget priced instrument. Vertical binocular body. Choice of single magnification from 5X to 45X. Extra eyepieces for additional powers, \$19.50 per pair. **\$110**



MSHL — a versatile general purpose instrument with a wide range of magnifications. Inclined binocular body, revolving nosepiece, for rapid interchange of objectives. Model MSHL-1 with objectives: 1X, 2X, 3X; eyepieces: 8X, 12X, 15X; magnification range: 8X-45X. Other magnification ranges available. **\$267**

AVAILABLE FOR FREE 10-DAY TRIAL . . . WRITE FOR FREE CATALOG 4B-9

ACCESSORY STAND — For use with binocular head and focusing mechanism of either Model MSL or MSHL. Price (stand only), \$75.

UNITRON INSTRUMENT DIVISION OF UNITED SCIENTIFIC CO.
204-206 MILK STREET • BOSTON 9, MASSACHUSETTS

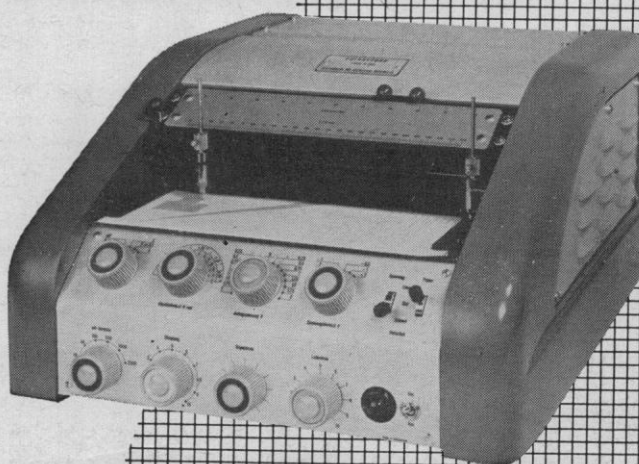
METROHM

NEW! RAPID POLAROGRAPHY

A major disadvantage of polarographic methods, especially in industrial laboratories, has been the considerable time used to run a complete test (polarogram). A minimum time of from five to fifteen minutes is required with all DC polarographic recorders currently available from commercial sources, both here and abroad. These delays result from the dropping time of the mercury electrode which should be in intervals of two to five seconds in order to obtain a sufficient number of measuring points.

Recent experiments at the METROHM laboratories in Herisau, Switzerland produced a major breakthrough to the "time problem" — Rapid DC Polarography. With this method the mercury drops of an otherwise normal dropping capillary are mechanically induced to fall at a much faster rate. Consequently, artificial drop signals measured in tenths of seconds are obtained. Since a considerably greater number of individual drops are utilized, one can also increase the speed of the potential change. The normal running time in Rapid Polarography is 50 seconds. With a drop interval of 0.2 seconds there are 250 drops on the polarogram. To obtain the same number of measuring points with the standard method would require a running time in excess of 12 minutes for a drop interval of 3.0 seconds.

SEND FOR COMPLETE DESCRIPTIVE CATALOG TH 25



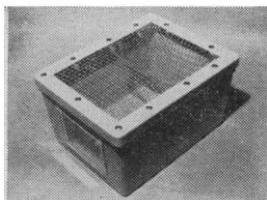
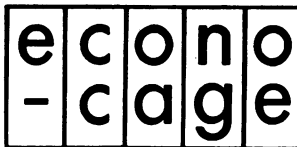
BRINKMANN

C. A. BRINKMANN & CO.

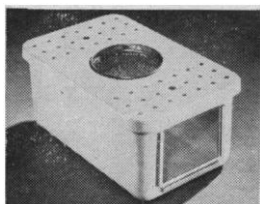
115 CUTTER MILL ROAD, GREAT NECK, N. Y.

PHILADELPHIA CLEVELAND HOUSTON MIAMI

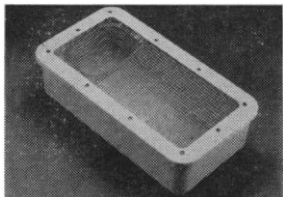
a review of recent animal care developments from



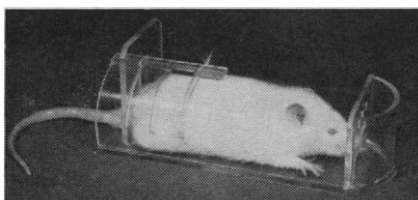
General purpose fiberglass cage #12 with Lid 12B is 11" x 8½" x 6" deep



Mouse cage #22 with Lid 22A, of fiberglass, has four lid styles, is 11½" x 7½" x 5"



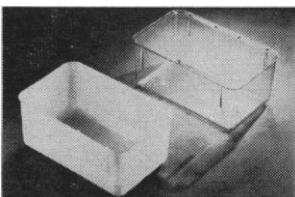
Holding and breeding cage #32, of fiberglass, is shown with Lid 32B. Cage is 19" x 10½" x 5½"



Restraining cage #90, for immobilizing and holding rats up to 300 grams, has many applications



Newly developed all metal lids with single piece deep drawn feeders come in several sizes

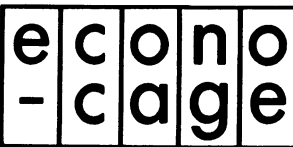


Polypropylene cage #25 and clear cage #23, both 11½" x 7½" x 5", are new additions to the Econo-Cage line

Lightweight Econo-Cages are made with corners and edges rounded and seamless for easy cleaning. They are resistant to acids and staining. The low thermal conductivity of these units reduces animal and weight loss from chilling and upper respiratory diseases. Fiberglass Econo-Cages can be autoclaved repeatedly. You can select from a variety of lid styles and components to suit your exact needs.

For the most up-to-date animal care product developments keep in touch with . . .

Econo-Cage Division, Box #4
MARYLAND PLASTICS, INC.
Federalsburg, Maryland



New Products

The information reported here is obtained from manufacturers and from other sources considered to be reliable. Neither Science nor the writer assumes responsibility for the accuracy of the information. All inquiries concerning items listed should be addressed to the manufacturer. Include the department number in your inquiry.

■ **PROXIMITY TRANSDUCER** measures small mechanical displacements at frequencies from 0 to 20,000 cy/sec. Calibration can be performed under dynamic conditions; a micrometer head on the transducer is calibrated directly in 0.0001-in. units. Output is designed for cathode-ray-tube display. (Photocon Research Products, Dept. Sci480, 421 N. Altadena Dr., Pasadena, Calif.)

■ **AUDIOMETER** provides signals at frequencies 500, 1000, 2000, and 4000 cy/sec at three intensity levels, 15, 30, and 40 db. Frequency accuracy is said to be ± 10 percent and amplitude accuracy ± 2 db. Selection of each signal is provided by 12 push buttons. Facilities for as many as six telephones or a double headphone with changeover switch and bone conduction can be provided. (Technisch Handelsbureau, Dept. Sci482, c/o Netherlands Trade Commission, 551 Fifth Ave., New York 17, N.Y.)

■ **COORDINATE INSPECTION MACHINE** permits inspection of machined work to an accuracy of ± 0.001 in. with travel 24 by 15 in. Vertical travel of 10 in. is not used for measurement. Motion in the x and y directions is measured photoelectrically by the Moire fringe pattern generated by crossed gratings. Measurement information is displayed continuously by two 5-digit counters. (Ferranti Electric Inc., Dept. Sci492, 95 Madison Ave., Hempstead, N.Y.)

■ **DATA PRINTER** is a miniaturized device weighing a few ounces. As many as 20 digits are printed simultaneously on electrosensitive paper when appropriate elements of an array of stainless-steel printing segments are energized. Operating power is said to be low enough to eliminate the need for isolation and driver stages to couple the data-producing device to the printer. (New York University, Dept. Sci493, University Heights Center, New York 53, N.Y.)

■ **CONDUCTIVITY METER** is a portable battery-operated meter designed to read parts per million of solute in saline or other solutions. Meter ranges are from 0 to 100,000 parts per million with increments down to 0.5. A temperature compensation adjustment is provided. Weight is 1.5 lb. (Carma Mfg. Co., Dept. Sci505, 1879 Mullin Ave., Torrance, Calif.)

■ **SIGNAL GENERATOR** furnishes crystal-controlled calibration frequencies at intervals of 100 kcy/sec from 300 to 1000 Mcy/sec. Intermediate frequencies are continuously tunable with error of ± 300 cy/sec. Auxiliary equipment permits the crystal-synchronization interval to be reduced to 100 cy/sec and the continuous tuning error to 0.1 cy/sec. (Electronics Applications, Inc., Dept. Sci497, 174 Richmond Hill Ave., Stamford, Conn.)

■ **ELECTROMETER** features miniaturized design that permits two electrometers to be mounted in $3\frac{1}{2}$ in. of a standard relay rack. Highest sensitivity range is 10^{-12} amp, full scale. Specifications include: accuracy, ± 2 percent of full scale from 10^{-3} to 15^{-7} and ± 3 percent in other ranges; drift, less than 2 percent per week, and noise, less than 2 percent except on the most sensitive range; input drop, less than 6 mv; full-scale output for recorder, 10 mv. (Gyra Electronics Corp., Dept. Sci495, P.O. Box 184, LaGrange, Ill.)

■ **INTERFERENCE FILTER** is said to remove ultraviolet radiation completely and reflect infrared radiation. The filter transmits about 90 percent in the visible from 425 $m\mu$ to 700 $m\mu$ and has a sharp cutoff beginning at 700 $m\mu$. The half-transmission points are at 412 $m\mu$ on the short side and 725 $m\mu$ on the long side. (Fish-Schurman Corp., Dept. Sci504, 70 Portman Rd, New Rochelle, N.Y.)

■ **PRESSURE GAGE** is designed for use where small differential pressures are to be measured. Sensitivity is 0.1 percent and accuracy is ± 0.5 percent of full-scale range. Two models available have full-scale ranges, respectively, of 2 lb/in.² differential at line pressure up to 50 lb/in.², and 5, 10, or 20 lb/in.² differential at line pressures up to 300 lb/in.². Dials can be supplied calibrated in any desired units. (Wallace and Tiernan, Inc., Dept. Sci509, 25 Main St., Belleville, N.J.)

■ **TIME ANALYZER** analyzes the distribution of nuclear events with respect to time. Information is stored digitally in 32 consecutive gated channels of variable width from 1 μ sec to 0.08 sec. Channel scalars have a double-pulse resolution of 1 μ sec and count up to 2500/pulses per second. Each channel has two electronic counting units and a 4-digit mechanical register to provide 10^6 number storage. The total number of pulses entering the analyzer is also indicated. (Eldorado Electronics, Dept. Sci500, 2821 Tenth St., Berkeley, Calif.)

JOSHUA STERN

National Bureau of Standards,
Washington, D.C.

PERSONNEL PLACEMENT

CLASSIFIED: Positions Wanted, 25¢ per word, minimum charge \$4. Use of Box Number counts as 10 additional words. Payment in advance is required. **Positions Open**, \$40 per inch or fraction thereof. No charge for box number.

COPY for classified ads must reach SCIENCE 2 weeks before date of issue (Friday of every week).

DISPLAY: Rates listed below—no charge for Box Number. Monthly invoices will be sent on a charge account basis—provided that satisfactory credit is established.

Single insertion	\$40.00 per inch
4 times in 1 year	38.00 per inch
7 times in 1 year	36.00 per inch
13 times in 1 year	34.00 per inch
26 times in 1 year	34.00 per inch
52 times in 1 year	32.00 per inch

For PROOFS on display ads, copy must reach SCIENCE 4 weeks before date of issue (Friday of every week).

Replies to blind ads should be addressed as follows:

Box (give number)
Science
1515 Massachusetts Ave., NW
Washington 5, D.C.

POSITIONS WANTED

Geneticist-Cytologist-Electron Microscopist. Ph.D. Specialized research, teaching experience. Microbiology, botany background. Publications. Box 83, SCIENCE. 4/22, 29

Immunopharmacologist. Ph.D., desires to conduct research on purification and therapeutic uses of antibodies and enzymes. P.O. 333, Davis, California. 4/15, 22, 29

(a) **Pharmacology/Physiology** Ph.D.; faculty of leading medical schools; extensive publications on CNS, cardiovascular, respiration, shock, tension research; available for academic or research appointment. (b) **Zoology** Ph.D., human anatomy minor; 10 years of anatomy teaching at medical school, neuroanatomy research experience; prefers academic teaching and research opportunity. Medical Bureau, Inc., Science Division, Burnice Larson, President, 900 North Michigan Avenue, Chicago. X

Physiology-Endocrinology. Ph.D. Background-training in endocrine, cellular, mammalian, zoological physiology; biochemistry. Academic or research. Box 98, SCIENCE. X

POSITIONS OPEN

POSITIONS OPEN

Faculty of Agriculture. The University of Alberta invites applications for a position in the Department of Animal Science as Assistant Professor, starting salary \$6000-\$7000 depending on experience and qualifications, excellent prospects for advancement. Candidates should have a Ph.D. or equivalent in animal physiology with a minor in biochemistry and be qualified to conduct research involving the use of isotopes. Duties, to commence 1 September 1960, include fundamental and applied research with farm and laboratory animals, teaching and limited extension work.

Applications, accompanied by a recent photograph, and giving age, nationality, and other personal information, transcripts of academic record, list of publications and experience, and names and addresses of three references, should be addressed to the Head, Department of Animal Science, University of Alberta, Edmonton, Alberta. Closing date: 30 June 1960. 5/6

Botanist. Experienced in microtechnique and general botanical preparation. For work with well-known biological supply house. Preparation of slides and other demonstrations for botany and general biology. Male or female, prefer Ph.D.; M.S. and experience acceptable. Good salary, benefits, paid vacation, and sick leave. Opportunity for advancement. Reply to Box 95, SCIENCE. 5/6

(a) **Microbiologist;** Ph.D. or equivalent training to serve as head, cell production facility, conduct cell culture research; must be familiar single, suspended, monolayer cell culture techniques, related procedures; midwestern office prominent pharmaceutical company. (b) **Pharmacologist;** Ph.D. to establish evaluation program associated toxicity studies in new drug screening; report to director, pharmacologic research; to \$8500; midwestern subsidiary, prominent company; Chicago suburb. (c) **Biochemist;** Ph.D. to train in-plant visitors in coagulation, related problems; keep abreast of competitive products, developments; give seminars in coagulation, related areas; about \$10,000; East (d) **Bacteriologist;** B.S., M.S., for consulting firm doing drug evaluations, vitamin, hormone, toxicological assays; superior facilities; to \$6000; Midwest. (e) **Biochemist;** M.S., Ph.D., to head department, 300-bed Chicago hospital; minimum \$8000. (Please write for an analysis form. Our 64th year: Founders of the counselling service to the medical profession. Serving medicine with distinction over half a century. Science Division, Woodward Medical Bureau, Ann Woodward, Director, 185 North Wabash, Chicago. X

Microbiology Graduate Assistantships toward master's degree; \$1800, free tuition. Excellent facilities. Phone inquiry collect. Orton Stark, Miami University, Oxford, Ohio. 4/22, 29

INTERNATIONAL SEARCH

Opportunities for Physicists—Physical Chemists—Fiber Scientists FIBER CHARACTERIZATION RESEARCH

The planned expansion of the programs and staff of the Chemstrand Research Center, Inc. involve establishment of a Fiber Characterization Section to:

- Characterize experimental fiber forming materials, relating their properties back to their molecular structure and forward to end product performance
- Develop fiber evaluation techniques and instruments
- Perform physical analysis associated with fiber, yarn and end product evaluation.

Challenging assignments are available at several levels of responsibility including direction of the Section's activities. Academic training in Physics, Physical or Polymer Chemistry, or Fiber Mechanics and considerable experience in the above areas of the textile fiber and related fields are prerequisite for the individual selected to head this program. Demonstrated ability to organize and administer broad theoretical and applied research studies also required. Similar training and interests but less experience needed for other interesting opportunities in this group. The importance and complexity of this fundamental investigational work will be recognized in commensurate salaries and professional climate.

The Chemstrand Research Center, Inc.—a wholly owned subsidiary of the young and vigorous Chemstrand Corporation—will relocate in late 1960 from its present Decatur, Alabama site to new laboratories in the Research Triangle area of North Carolina.

European interviews can be arranged for applicants who are noncitizens of the United States and have decided to immigrate to this country.

If you are interested in associating with these new programs of an expanding research organization, contact or send resume of academic background and experience in strictest confidence to:

MANAGER, TECHNICAL
EMPLOYMENT AND
RECRUITMENT

BOX R15D
THE CHEMSTRAND CORPORATION
DECATUR, ALABAMA

POSITIONS OPEN

INFORMATION SCIENTIST

EXCELLENT OPPORTUNITY FOR SCIENTIST (Ph.D. OR EQUIVALENT) WHO IS INTERESTED IN WORKING WITH LITERATURE. OPENING IN RECENTLY ESTABLISHED AND CURRENTLY EXPANDING INFORMATION DEPARTMENT OF PROGRESSIVE CENTRAL NEW YORK STATE PHARMACEUTICAL FIRM. ASSIGNMENTS WILL INVOLVE CONTACT WITH RESEARCH STAFF, SCREENING AND ABSTRACTING UNPUBLISHED DOCUMENTS AND ANSWERING REQUESTS FOR TECHNICAL INFORMATION. PLEASE FORWARD RESUME TO:

PROFESSIONAL EMPLOYMENT MANAGER
EATON LABORATORIES DIVISION
THE NORWICH PHARMACAL COMPANY
NORWICH, NEW YORK

ENDOCRINOLOGIST

Specializing in the endocrinology of reproduction, to be responsible for a biological research program dealing with fertility. Five years postdoctorate experience desired. Large pharmaceutical company in the East. Please send résumé of education and experience to

Box 78, SCIENCE

HISTOLOGY SUPERVISOR

Experienced in neuro-histology plus college degree. Interesting and unusual research program offers challenging future.

Personnel Director
MONTEFIORE HOSPITAL
210 St. & Bainbridge Ave.
New York 67, N.Y.
OL 2-7787

(a) **Microbiologist** to direct active department in large university hospital; \$9000-\$12,000 year; East. (b) **Radiation Biology Teacher** combined with physiology or zoology courses; associate professor or professor level; East. (c) **Parasitology Research Associate** or medical school, Texas. (d) **Physiologist/Pharmacologist** for leading pharmaceutical firm; around \$10,000 year; Midwest. (e) **Pathologist**, M.D., Ph.D., or D.V.M. degree; clinical and animal experience preferred for research laboratories; over \$10,000; South. (f) **Biochemist** for peptide research; \$6000-\$10,000 year; Southwest. (g) **Physiologist or Bacteriologist** to head new electron microscopy department in research institute; \$8000 year up; Midwest. (h) **Physiologist** for basic research on brain functions at leading university; East. (i) **Head of Physics Department** in new science building of state university; \$8000-\$10,000 year; Midwest. (j) **Botany Faculty Appointment** for teaching and research; new science building in large university; South. (Please write for details; also many other positions available through our nationwide service.) S4-5 Medical Bureau, Inc., Science Division, Burneice Larson, President, 900 North Michigan Avenue, Chicago. X

Microbiology of Coal and Petroleum. The Research Council of Alberta has an opening for a microbiologist to participate in research dealing with the origin, constitution, and utilization of fossil fuels. Existing projects involving microbiology deal with the development of porphyrin pigments in crude oil and with microbiological oxidation of aromatic hydrocarbons. Investigations of the sulfur compounds in both oil and coal and of humification processes are planned. There will be opportunity to participate in the choice and planning of research programs and ample scope for individual scientific development. Salary dependent on qualifications. Make application to The Secretary, Research Council of Alberta, 87th Avenue and 114th Street, Edmonton, Alberta. 5/6

Science Teachers, Librarians, Administrators urgently needed for positions in many states and foreign lands. Monthly non-fee placement journal since 1952 gives complete job data, salaries. Members' qualifications and vacancies listed free. 1 issue, \$1. Yearly (11 issues) membership, \$5 individual; \$10 institutional. CRUSADE, SCI., Box 99, Station G, Brooklyn 22, N.Y. eow

POSITIONS OPEN

Scientist, Ph.D. with wide background in science, preferably biology with some training in humanities and/or social sciences. Teaching in general education program in large midwestern university. Opportunity for research; emphasis on teaching. Instructor-assistant professor level. Box 100, SCIENCE. X

Virologist, \$10,000 annually. Yearly increment. For research on animal tumor viruses. **Microbiologist**. Salary depends on background and experience. For animal disease research. Both positions include well-equipped laboratories and possibility of academic appointment. Write to Chairman, Department of Applied Veterinary Medical Sciences, School of Veterinary Medicine, University of Pennsylvania, Philadelphia 4, Pa. X

Virologist (IVa) Ph.D., to head public health virus laboratory engaged in diagnostic and research activities. State civil service with retirement plan, plus social security. Starting salary \$8435 to \$10,774 maximum. Write Michigan Civil Service, Recruitment and Placement, Lansing 13, Mich., for further information. 5/6, 13, 20

FELLOWSHIPS

Two postdoctoral traineeships in **Sensory Physiology** (auditory and/or prenatal). For the M.D. interested in otological research and/or the Ph.D. in physiology, anatomy, biophysics, or experimental psychology. Stipends, largely tax free, \$6000 per year, up to 3 years. Write to The Deafness Research Laboratory, Children's Hospital, 4614 Sunset Blvd., Los Angeles 27, Calif. 4/15, 22, 29

The Market Place

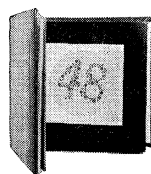
BOOKS • SERVICES • SUPPLIES • EQUIPMENT

DISPLAY: Insertions must be at least 1 inch in depth. Monthly invoices will be sent on a charge account basis—provided that satisfactory credit is established.

Single insertion	\$40.00 per inch
4 times in 1 year	38.00 per inch
7 times in 1 year	36.00 per inch
13 times in 1 year	34.00 per inch
26 times in 1 year	34.00 per inch
52 times in 1 year	32.00 per inch

For PROOFS on display ads, copy must reach SCIENCE 4 weeks before date of issue (Friday of every week).

BOOKS AND MAGAZINES



DVORINE

Pseudo-Isochromatic Plates *

- Distinguishes the color-blind from the color-ignorant.
- Classifies the color-blind according to type and severity of defect.
- Special arrangement prevents malingering.

With Directions

\$15 each, less 5% if you send check

SCIENTIFIC PUBLISHING CO.
2328 Eutaw Place—Dept. S—Baltimore 17, Md.

BOOKS AND MAGAZINES

Your sets and files of scientific journals

are needed by our library and institutional customers. Please send us lists and description of periodical files you are willing to sell at high market prices. Write Dept. A35, CANNER'S, Inc. Boston 20, Massachusetts

PROFESSIONAL SERVICES



LABORATORY SERVICES

for the
FOOD and DRUG INDUSTRIES
Drug Evaluation, Food Additive Studies
Chemical and Biological Assays,
Clinical Studies, Research

LAWALL & HARRISON

Div. S. 1921 Walnut St., Philadelphia 3. Pa. LO 3-4322

SUPPLIES AND EQUIPMENT

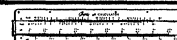


Chemical Predictor

... the calculator used by chemists everywhere. Instantly predicts and illustrates 10,000 oxidation-reduction equations. \$3.25

Solution Concentration & Gas Law Slide Rule

... instantly solves problems involving MOL FRACTION MOLALITY LIQUID-VAPOR EQUILIBRIUM VOL FRACTION MOLALITY P-T-V RELATIONSHIPS \$10.00
Answers are given to correct decimal place. Includes standard scales for multiplication and division. Saves time—reduces errors. Complete with instructions and case.



pH Slide Rule

... will solve the equation pH = pK + log base acid in one setting. \$4.85
Complex buffer solutions can be solved immediately and accurately without time-consuming log calculations. Complete with instructions and case.

All items made of lifetime plastic—Satisfaction Guaranteed.
Enclose check or money order with order

Dyna-Slide Company, Dept. 4A
600 South Michigan Ave., Chicago 5, Ill.

• HYPOPHYSECTOMIZED RATS

Shipped to all points via Air Express
For further information write

HORMONE ASSAY LABORATORIES, Inc.
8159 South Spaulding Ave., Chicago 29, Ill.

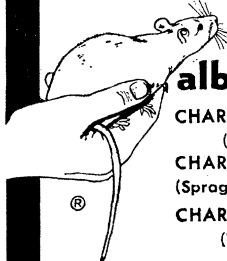
YOU NEED THIS FREE CATALOG FOR YOUR FILES

Serums, antisera and bloods of all kinds for technicians and tissue culture laboratories. No salesman will call.

COLORADO SERUM CO.

4950 York St. • MAin 3-5373 • Denver 16, Colo.

"From the hand of the veterinarian to research"®



albino rats

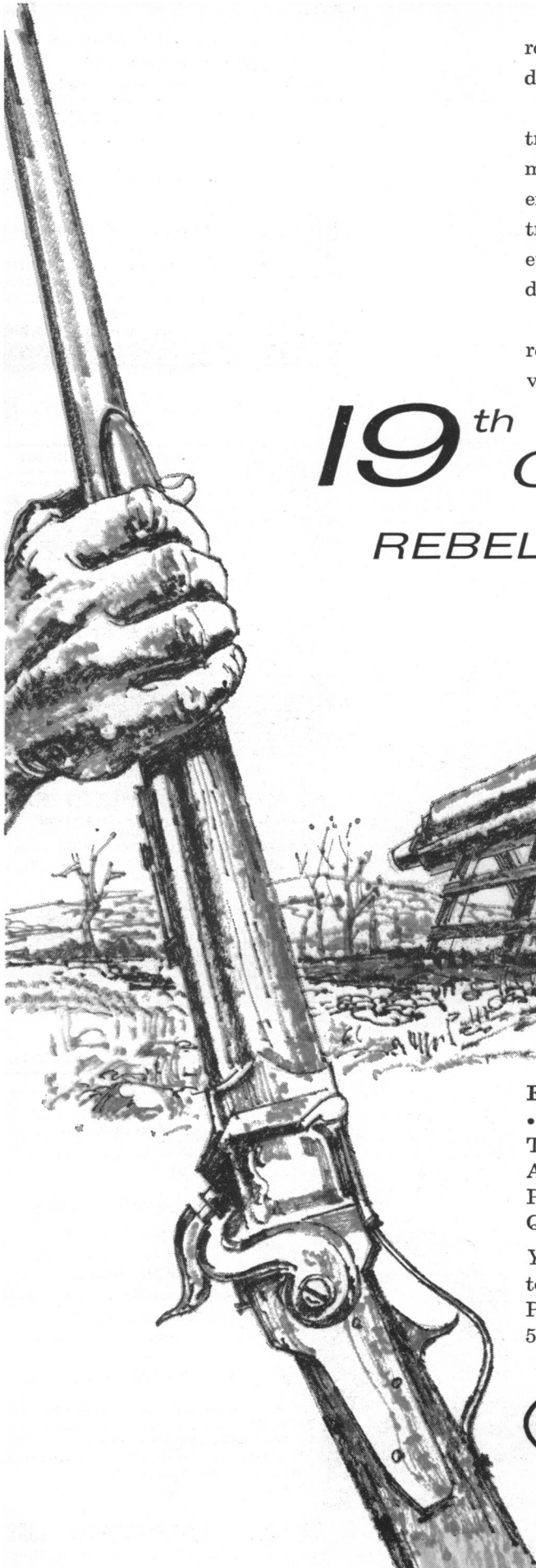
CHARLES RIVER CD
(Caesarean derived)
CHARLES RIVER SD
(Sprague-Dawley descendants)
CHARLES RIVER W
(Wistar descendants)

HYPOPHYSECTOMIZED RATS

- Only Charles River CD animals used
- Rigidly controlled environment (same bldg.) birth to surgery.
- High speed surgery by graduate biologists.
- 10 years experience animal surgery.
- Overnight air service from Boston

THE CHARLES RIVER BREEDING LABS

Dept. B, 1093 Beacon Street, Brookline 46, Mass.
Henry L. Foster, D.V.M., President



The Richmond Arsenal was producing thousands of rockets for the Confederacy and experimentations on their deadly missiles were still underway as late as 1865.

Today, as a vital part of one of the world's largest electronics companies, Raytheon's Missile Systems Division is making significant contributions to the art of missilery. Here, engineers are working with far-advanced concepts in electronics, aeronautics, and astronautics. Constantly analyzing, evaluating, creating, they're helping to solve *tomorrow's* defense problems *now*.

Raytheon has room for more such men at all levels of responsibility. For them, Raytheon's Missile Systems Division creates a climate for talent — perhaps *your* talent.

19th CENTURY:

REBEL ROCKET OF '61

ENGINEERS: Immediate openings in Operations Analysis • Radar Systems • Data Processing • Design Data • Systems Test • Specification Engineering • Circuit Design • Systems Analysis • Electronic Packaging • Transmitter Design • Process Engineering • Product Engineering • Publications • Quality Control • Microwave.

Your resumé will receive prompt attention. Please address it to: Mr. Richard S. Malcolm, Coordinator of Employment/Placement, Missile Systems Division, Raytheon Company, 520 Winter Street, Waltham, Massachusetts.

17WS



**MISSILE
SYSTEMS
DIVISION**

...creates a climate for talent.


An exciting new product from Nuclear-Chicago!

Low cost RNS-100 Radionuclide Set for classroom use. Includes eight AEC license-exempt radioactive solutions, micropipette, sample pans, and instructions. For full information write for the RNS-100 brochure.

Nuclear-Chicago Corporation
349 East Howard Avenue, Des Plaines, Illinois



MODEL RNS-100

 **nuclear-chicago**