

# PERSONNEL PLACEMENT

**CLASSIFIED:** Positions Wanted, 25¢ per word, minimum charge \$4. Use of Box Number counts as 10 additional words. Payment in advance is required. Positions Open, \$33 per inch or fraction thereof. No charge for box number.

**COPY** for classified ads must reach SCIENCE 2 weeks before date of issue (Friday of every week).

**DISPLAY:** Rates listed below—no charge for Box Number. Monthly invoices will be sent on a charge account basis—provided that satisfactory credit is established.

Single insertion	\$33.00 per inch
4 times in 1 year	30.00 per inch
7 times in 1 year	28.00 per inch
13 times in 1 year	27.00 per inch
26 times in 1 year	26.00 per inch
52 times in 1 year	25.00 per inch

For PROOFS on display ads, copy must reach SCIENCE 4 weeks before date of issue (Friday of every week).

Replies to blind ads should be addressed as follows:

Box (give number)  
Science  
1515 Massachusetts Ave., NW  
Washington 5, D.C.

## FEELLOWSHIPS

### UNIVERSITY OF FLORIDA

Research Assistantships in Anatomy, Biochemistry, Microbiology, or Physiology—leading to M.S. and Ph.D. degrees.

Fields of Research Activity include experimental embryology, teratology, electron microscopy, venom toxicology, neuroanatomy, neurophysiology, endocrinology, respiration, hemodynamics, immunology, virology, parasitology, bacterial physiology, protein structure and metabolism, nucleic acids, lipids, vitamin synthesis, enzyme mechanisms, bio-physical chemistry.

**Liberal Stipends** (\$255 a month), tuition reduction; high faculty-graduate student ratio; modern new air-conditioned medical school with excellent research facilities; new graduate student housing, pleasant climate.

**Admission Requirements:** Bachelor's degree with high academic achievement and graduate record examination scores. For information, write the chairman of the department of your major interest, University of Florida College of Medicine, Gainesville.

**Graduate Study Fellowships.** For students working toward Ph.D. degree in biochemical pharmacology. Good chemical background desirable. Program emphasizes thorough biochemical training as preparation for research. Tax-free stipends, \$1800-\$3800, determined by academic fees. Pharmacology Department, Washington University Medical School, St. Louis 10, Mo. 2/26

**Postdoctoral Traineeship in Neuropharmacology and Biochemical Pharmacology.** For the Ph.D. in chemistry, biochemistry, or pharmacology, or the M.D. who would like to broaden his training and enter research or teaching. Stipends, largely tax free, \$4500-\$7000 per year, determined by qualifications, experience, and number of dependents. Program emphasizes the biochemical approach to the study of pharmacology. Research areas include the nervous system, retina, kidney, antibiotics, energy-yielding processes, adaptive enzymes, and so forth. Department of Pharmacology, Washington University Medical School, St. Louis 10, Mo. 2/26

**Predocctoral and Postdoctoral Fellowships in Biochemistry.** Study program leading to the Ph.D. degree, also postdoctoral research. Predocctoral annual stipends begin at \$2800 plus a tuition exemption and dependency allowance and increases to \$3200. Postdoctoral fellowships range from \$4500 upward depending upon experience and dependency status. Basic research in intermediary carbohydrate, fat, protein and nucleic acid metabolism, oxidative phosphorylation, protein synthesis, enzymology. Excellently equipped laboratories. Write Dr. Harland G. Wood, Chairman, Department of Biochemistry, Western Reserve University, Cleveland 6, Ohio. 2/26; 3/4, 11

## POSITIONS WANTED

**Biologist,** young Ph.D. Teaching experience—cell physiology, histology-cytology, comparative anatomy. Research experience—associate in cytochemistry, medical school. Publications. Desires university or college teaching. Box 31, SCIENCE. X

## POSITIONS WANTED

**Bacteriologist.** Outstanding woman Ph.D., early 40's; over 10 years' teaching, research experience, principally physiological problems of animal cell culture; seeks research appointment, university or foundation preferred; recommended without reservation; Woodward Medical Bureau, Ann Woodward, Director, 185 North Wabash, Chicago. X

(a) **Plant Pathology,** Ph.D., mycology minor; desires academic or commercial research appointment. (b) **Physiology,** Ph.D., biochemistry minor; also M.D. degree; extensive physiology teaching experience; interested in cardiovascular teaching or animal and human research. (c) **Chemistry,** Ph.D., experienced in clinical and physical biochemistry and physicochemical methods; desires research appointment. S2-3 Medical Bureau, Inc., Science Division, Burneice Larson, President, 900 North Michigan Avenue, Chicago. X

## POSITIONS OPEN

### BIOLOGICAL SCIENTIST

B.S.—M.S.

Excellent opportunity with well-known pharmaceutical firm located in Philadelphia for alert individuals having M.S. or B.S. in the biological sciences. Position in science information department offers opportunities to work with a wide variety of scientific subjects. Applicants should have good written and oral expression. Liberal benefits. Send complete resume.

Box 30, SCIENCE

**Cancer Chemotherapy** (Research and Development)—opening for qualified junior scientist with M.S. or equivalent experience in bacteriology and/or virology. Assist senior scientist in the study of microbial cell systems and bacterial and animal viruses of potential interest to the cancer problem. Submit complete résumé to: Personnel Director, Bristol Laboratories, Syracuse 1, New York.

## POSITIONS OPEN

(a) **Pharmacologist.** Ph.D., to establish evaluation program associated toxicity studies in new drug screening; report to director; pharmacologic research; to \$8500; Midwest subsidiary operation, important concern. (b) **Bacteriologist.** B.S., M.S., to head department averaging nearly 10,000 tests yearly; 500-bed, fully approved hospital; large city, Ohio. (c) **Biochemist.** M.S., Ph.D., head section, 300-bed voluntary hospital; \$8000 up; midwestern university center. (d) **Biochemist.** Ph.D., for central allergy laboratory, large government hospital; research concerned mainly methods improving antigenic qualities of extracts, and allergy immunichemistry; to nearly \$10,000; East, Woodward Medical Bureau, Ann Woodward, Director, 185 North Wabash, Chicago. X

(a) **Pharmacologist-Physiologist.** Research associate for university; \$7200 year; East. (b) **Research Biochemist** for nutrition-endocrinology research at expanding hospital, Midwest. (c) **Pathologist** with clinical experience and preferably animal experience for biological research laboratories; \$10,000 year, more for experience; Southeast. (d) **Biophysics** with knowledge of biological systems for medical-electronic research group; junior and senior level positions; East. (e) **Science Editor.** Degree in chemistry or physics with editing ability; \$6000-\$9000 year; Chicago. (f) **Biochemist** interested in protein research; also **Physiologist** or **Bacteriologist** to take charge of new electron microscopy division with leading medical institute; \$8000 year up. (g) **Microbiologist** for research with leading pharmaceutical firm; East. (h) **Biology Instructor** or **Assistant Professor** for liberal arts college; East. (Please write for details; also many other positions available through our nationwide service.) S2-3 Medical Bureau, Inc., Science Division, Burneice Larson, 900 North Michigan Avenue, Chicago. X

**Science Teachers, Librarians, Administrators** urgently needed for positions in many states and foreign lands. Monthly non-fee placement journal since 1952 gives complete job data, salaries. Members' qualifications and vacancies listed free. 1 issue. \$1. Yearly (11 issues) membership, \$5 individual; \$10 institutional. CRUSADE, SCL, Box 99, Station G, Brooklyn 22, N.Y. eow

## New Gateway to Achievement in Astronautics and Aeronautics

# Republic Aviation's New Research & Development Center

Engineers and scientists whose minds are challenged by unsolved problems across the entire spectrum of technologies concerned with space exploration and upper atmosphere flight, are invited to inquire about the exceptional facilities for both theoretical and experimental investigations provided by Republic's new Research and Development Center (scheduled to open Spring 1960).

Senior level openings exist in the following areas:

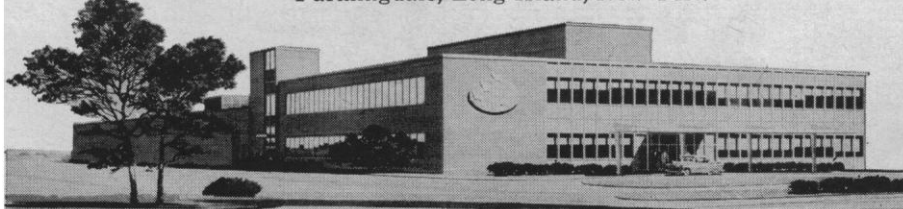
Space Electronics (*Guidance, Navigation, Communications*) / Hydromagnetics / Advanced Computer Technology / Applied Mathematics / Nuclear Power Packages / Space Environmental Studies (*Life Science*) / Celestial Mechanics / Hypersonics / Electronic Theory / Plasma Physics / Radiation Studies / Re-entry Techniques / Materials Research & Development / Fluid Mechanics

Please forward resumes to: Mr. George R. Hickman  
Technical Employment Manager, Dept. 35B-3



**REPUBLIC AVIATION**

Farmingdale, Long Island, New York



# The Market Place

## BOOKS AND MAGAZINES

### Your sets and files of scientific journals

are needed by our library and institutional customers. Please send us lists and description of periodical files you are willing to sell at high market prices. Write Dept. A3S, CANNER'S, Inc. Boston 20, Massachusetts

## JUST PUBLISHED MOON BASE

by Dr. T. C. Helvey

(Principal Biophysicist, Research Div., Radiation, Inc.)

a plan that is a prelude to sending the first U.S. team (two men and a woman) to the moon  
#266, \$1.95

at bookstores or order from  
**JOHN F. RIDER PUBLISHER, INC.**  
116 West 14th Street,  
New York 11, N. Y.



## DVORINE

### Pseudo-Isochromatic Plates \*

- Distinguishes the color-blind from the color-ignorant.
- Classifies the color-blind according to type and severity of defect.
- Special arrangement prevents malingering.

With Directions

\$15 each, less 5% if you send check

\*The most widely accepted test in the U.S. Used by Medical Examiners of the CAA, VA and Armed Forces.

### SCIENTIFIC PUBLISHING CO.

2328 Eutaw Place—Dept. S—Baltimore 17, Md.

## PROFESSIONAL SERVICES

### MICROBIOLOGICAL

### RESEARCH & CONSULTING LABORATORY

virology

medical — veterinary

foods — dairy — drugs — sanitary

618 E. South Street, Orlando, Florida  
Garden 3-7027

FOUNDED 1922

## Food and Drug Research Laboratories INCORPORATED

Maurice Avenue at 58th Street  
Maspeth 78, New York City  
CABLE: FOODLABS TEL. TWINING 4-0800

### PATHWAY RESEARCH LABORATORIES, Inc.

Fluorescent Antibody Reagents and Antisera  
Contract Research and Consulting in Microbiology and Biochemistry

Write for our free brochure

11102 South Artesian Avenue  
Chicago 43, Illinois



### LABORATORY SERVICES

for the  
**FOOD and DRUG INDUSTRIES**  
Drug Evaluation, Food Additive Studies,  
Chemical and Biological Assays,  
Clinical Studies, Research

### La WALL & HARRISON

Div. S. 1921 Walnut St., Philadelphia 3, Pa. RI 6 4322

## SUPPLIES AND EQUIPMENT

# RABBIT BY-PRODUCTS

### INCLUDING

SERUM  
BRAINS  
LUNGS  
EYES  
HEARTS  
LIVERS  
KIDNEYS  
SPLEENS

ALL PRODUCTS FROM GOVT  
INSPECTED DOMESTIC RABBITS

### NATION'S LARGEST SUPPLIER OF RABBIT BY-PRODUCTS

WRITE FOR FREE BROCHURE

PEL-FREEZ Rabbit Meat Co.

Box S219, Rogers, Arkansas

### • HYPOPHYSECTOMIZED RATS

Shipped to all points via Air Express  
For further information write  
**HORMONE ASSAY LABORATORIES, Inc.**  
8159 South Spaulding Ave., Chicago 29, Ill.

### PREPARED BIOLOGICAL SLIDES

of insects, plants, fibres, animals algae, etc. Ideal  
for teaching and amateur microscopy.

Write for FREE Catalog  
Complete List and Prices

**ESBE LABORATORY SUPPLIES**  
459 Bloor Street, West, Toronto, Canada

### GUINEA PIGS WHITE MICE RABBITS RATS

Yes we have a few  
Guinea Pigs available—  
Plenty of Mice. Also  
Rats and Rabbits. Reasonably Priced

John C. Landis, 1908 Virginia Ave.  
Hagerstown, Md.

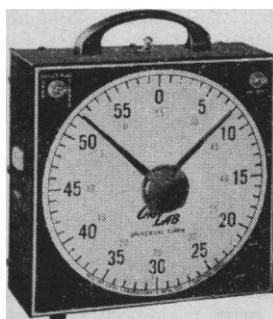
### KERN MICRO-ELECTROPHORESIS APPARATUS LK-30

REDUCED TO \$2150.

REASON? PRODUCTION KNOW-HOW

ask for bulletin MED 505

**KERN COMPANY** 121 NASSAU ST.  
NEW YORK 38



### ELECTRIC

# LAB TIMER

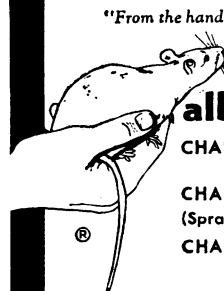
Giant 8" Dial

**GRA LAB INTERVAL TIMER** Automatic  
signalling and switching over unusually wide  
range of 3600 possible settings.  
**GRA LAB MICRO TIMER** 1/10 sec. or 1/1000  
min. stop clock. Remote start stop control.  
Write for catalog.

**DIMCO-GRAY COMPANY**  
214 E. SIXTH ST., DAYTON 2, OHIO

## SUPPLIES AND EQUIPMENT

"From the hand of the veterinarian  
to research"®



### albino rats

**CHARLES RIVER CD**  
(Caesarean derived)  
**CHARLES RIVER SD**  
(Sprague-Dawley descendants)  
**CHARLES RIVER W**  
(Wistar descendants)

### HYPOPHYSECTOMIZED RATS

- Only Charles River CD animals used
- Rigidly controlled environment (same bldg.) birth to surgery.
- High speed surgery by graduate biologists.
- 10 years experience animal surgery.
- Overnight air service from Boston

### THE CHARLES RIVER BREEDING LABS

Dept. B, 1093 Beacon Street, Brookline 46, Mass.  
Henry L. Foster, D.V.M., President

### ANIMAL CAGES and ACCESSORY EQUIPMENT

BUY DIRECT FROM MANUFACTURER  
SHIPMENT OF STANDARD ITEMS  
FROM STOCK

### HOELTGE BROS., Inc.

1919 Gest St. Cincinnati 4, Ohio  
Write for Illustrated Catalog  
SERVICE SINCE 1856

### Rats from the Wistar Strain

## Laboratory Animals

since 1929

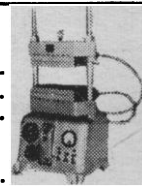
**ALBINO FARMS, P.O. BOX 331**  
**RED BANK, NEW JERSEY**

Swiss Mice — Albino Rabbits

### WABASH HYDRAULIC LABORATORY PRESSES

Most complete line, 3 to 50-  
tons capacity. Heated Platens.  
Manual & motorized models.  
Ask for catalog.

**Wabash Metal Products Co.**  
1614 Morris St., Wabash, Indiana.



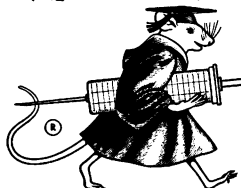
### YOU NEED THIS FREE CATALOG FOR YOUR FILES

Serums, antisera and bloods  
of all kinds for technicians and tissue  
culture laboratories. No salesman will call.

### COLORADO SERUM CO.

4950 York St. • MAin 3-5373 • Denver 16, Colo.

## SWISS MICE



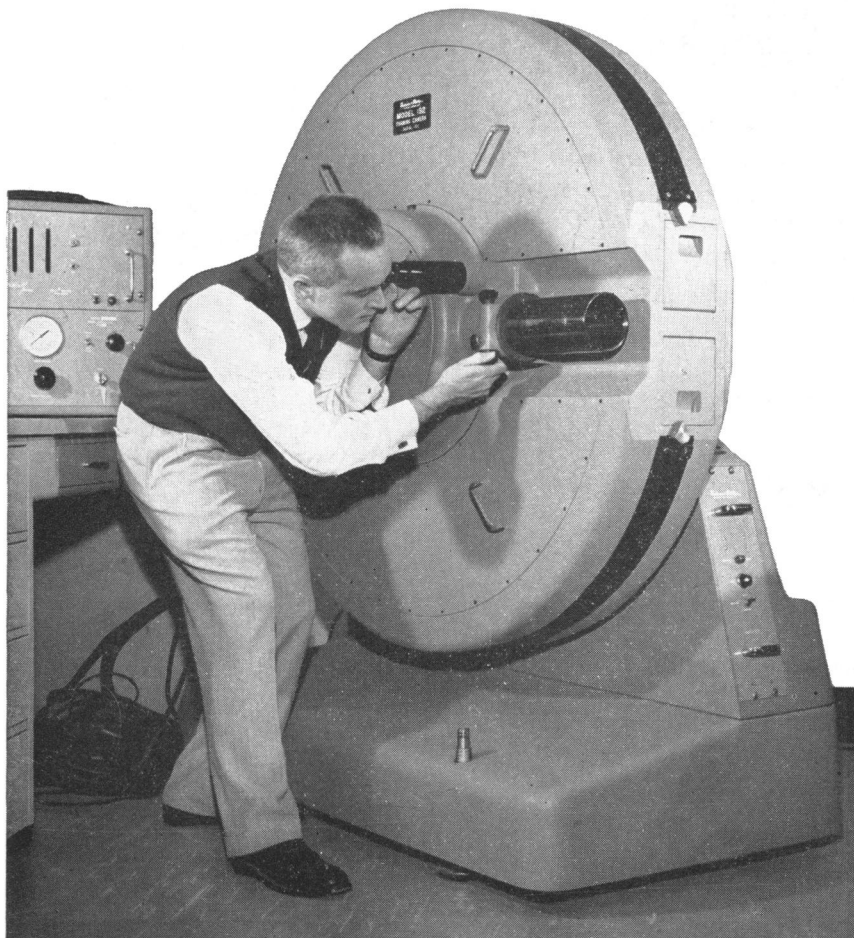
Send for  
booklet

## TACONIC FARMS

GERMANTOWN NEW YORK

## NEW FRAMING CAMERA

for the research group that has everything



Chiefly, the advantage of the Model 192 is that it is capable of making 80 35-mm photographs of an ultra-high-speed event without the necessity of synchronizing the camera and the event. Its top operating speed is 1,400,000 exposures per second.

May we send you further details or discuss with you the problems you may have which the Model 192 or one of our other cameras might solve?

*This is the production model of the new Beckman & Whitley Model 192 Continuous-Writing Framing Camera.*

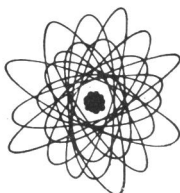
*Delivered to Avco Research and Advanced Development Division, outside Boston, the instrument will be used in experimental studies with high-temperature electric arcs or plasma jets, hypervelocity instrumentation, aeroballistics, and aerothermodynamics.*

*Shown focusing the objective lens of the newly installed camera is Glenn Hanson, head of the physics photography section of the division.*

**Beckman & Whitley**  
SAN CARLOS 1, CALIF. • U. S. A.

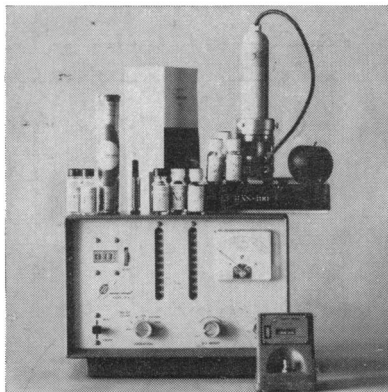
# NUCLEAR REVIEWS

from  
NUCLEAR-CHICAGO



## ATOMS IN SCHOOL

Many colleges and universities are keeping step with the atomic age by providing training in nuclear techniques, but there are hundreds of colleges and thousands of high schools within whose ivied walls radioisotopes still go unrecognized officially. To make nuclear training possible, practical and affordable to educators, Nuclear-Chicago now offers its brand new, complete, low cost Model 4000 Nuclear Training System. With this System chemistry, biology and physics instructors will find it easy to present dramatic and effective lecture and laboratory sessions on nuclear techniques, sessions which will snap the most lackadaisical class out of its bemusement with basketball or be-bop.



This Nuclear Training System includes a sensitive Geiger tube, a decade scaler, interval timer, sample mount and a Radionuclide Set containing eight different ra-

dioactive reagents, a micro-pipette, pipette syringe, and 100 stainless steel sample pans. Although sufficient activity is supplied in each reagent so that a large number of experiments can be made, no AEC license is required to obtain or use the System or the reagents provided with it. We also supply a 144 Page manual of suitable radioisotope experiments reprinted from the JOURNAL OF CHEMICAL EDUCATION.

We have illustrated the complete set and our modest price for the whole works is only \$652.00. The apple in the picture is just to tempt you to write for our Bulletin No. 131 which describes the System in detail. If you would also like a copy of the Manual of Experiments, just ask for "Journal Reprints."

## DOWN TO EARTH

If your job requires you to dig, build on or grow things in soil, it is important that you have a



pretty good idea of its characteristics. Two of the common questions asked about soil are "What is its density?" and "What is its moisture content?". To get answers has required procedures that are time consuming, expensive and inconvenient. Now Nuclear-Chicago's d/M-Gauge® System helps get the right answers in a fast, easy, modern way.

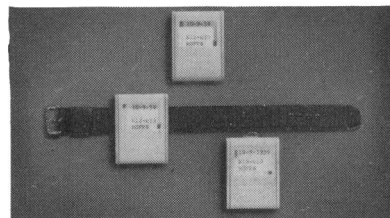
With the d/M-Gauge, moisture or density measurements can be made in a minute or two right on the spot. Surface probes provide measurements to a depth of 10 inches without moving a handful of soil. Depth probes, lowered

into a small diameter hole, give readings at any depth to 200 feet. Precise results are immediately available. No expensive and delaying laboratory analysis is needed. Measurements of moisture content or density are simply determined by applying the count per minute figures from the scaler to a calibration chart. It is all done with radioisotopes, but it doesn't take a nuclear engineer to work it. It is a simple economical method that anyone can use right in the field. Proved in the field for two years, we are sure it will be a boon to construction engineers, agronomists, farmers and anyone whose work keeps them down to earth. If you are concerned in any way with soil, it might be a good idea to read up on our d/M-Gauge System. Ask for our interesting brochure on it.

## RADIATION CONTROLS

There is a lot of legislative activity on radiation controls these days. Most every state is adopting some kind of control and AEC and other government offices are revising regulations.

One thing we feel sure of though, ultimately we're all going to be pretty safe with so many people looking out for our welfare. In



the meantime, if you have anything to do with ionizing radiation of any kind, better get a good film badge service because records are going to be valuable. We feel our service is the finest—good accuracy, accumulative reporting, ultra-fast service, low cost. Write us for full information.

  
**nuclear-chicago**  
CORPORATION  
349 E. HOWARD AVE. • DES PLAINES, ILLINOIS