

**New OXFORD
Scientific Texts
and Monographs**

Contact Catalysis

Third Edition

By R. H. GRIFFITH. This volume accounts for ten years of great activity in the theoretical and experimental study of heterogeneous catalysts, including such important subjects as the physics of the solid state and of gas-solid systems, the significance of the electronic factor in catalysis, and hydrocarbon reactions. \$8.00

**Electricity and
Magnetism**

By BETTY ISABELLE BLEANEY and BREBIS BLEANEY. A comprehensive textbook giving an up-to-date account of the theory and experimental aspects of electricity and magnetism. Principal subjects included are: electrostatics, electric currents and magnetic fields, magnetostatics and magnetic effects; alternating current theory and electromagnetic waves, etc. \$10.10

**Theories of
Nuclear Moments**

By ROGER JOHN BLIN-STOYLE. The first of a new series of monographs at the post-graduate level on physics and related subjects. In this volume facts learned in the laboratory are compared with theoretical predictions on the electro-magnetic moments of the nucleus most of which have been based on a simplified model of the nucleus. \$1.40

**The Detection and
Measurement of
Infra-Red Radiation**

By R. A. SMITH, F. E. JONES, and R. P. CHASMAR. This comprehensive account of recent developments deals with the properties of thermal detectors such as thermo-piles and bolometers and discusses their limitations. It accounts for modern photo-conductive detectors which use the lead salts PbS, PbTe, PbSe, and fully treats the random fluctuations which limit the sensitivity of all forms of detectors. \$11.20

At all bookstores

OXFORD UNIVERSITY PRESS, Inc.
114 Fifth Avenue, New York 11



**Large Volume!...
Super-Speed...
refrigerated centrifuge**



Model LR

The Model LR features a new design refrigeration system which employs forced air-circulation through side and bottom cooling areas to provide a continuous laminar flow of cool air streams onto all portions of the rotor. Chamber temperatures may be set as low as -15°C and automatically maintained within $\pm 1^{\circ}\text{C}$. Rotor compartment temperatures are easily maintained at 0°C and lower, even during runs at maximum speed for extended periods.

Instrumentation includes a continuous reading electric tachometer, two hour timer, automatic temperature controller, variable speed controller, ammeter for rotor acceleration control and various operating safety controls.

A full 1 Hp. Universal motor provides direct power to any rotor employed, without the use of cumbersome high speed attachments, pulleys or gears. All rotors are interchangeable used in both refrigerated and non-refrigerated Lourdes' centrifuges without the use of special adapters.

More compact and competitively priced, the Model LR offers highest quality construction, maximum operating efficiency and unsurpassed performance.

FOUR INTERCHANGEABLE ROTORS

ROTOR	CAPACITY (Max.)	RPM (Max.)	RCF x G (Max.)
11" Angle	1,500cc (8x250cc)	11,000	20,000
9" Angle	400cc (8x50cc)	15,300	30,000
9" Angle	360cc (24x15cc)	15,300	30,000
Swinging Cup	96cc (8x12cc)	12,000	21,500

NOTE: Adapters available for smaller tubes.

*Backed by over a decade of laboratory
instrument manufacturing experience,
each LOURDES' unit is guaranteed for
a period of one year.*

LOURDES INSTRUMENT CORP.

53rd STREET and 1st AVENUE • BROOKLYN 32, N. Y.

WRITE FOR
LITERATURE.
REFER TO S-97

LARGEST MANUFACTURER OF SUPER-SPEED CENTRIFUGES!



from **Palo** ... leaders in polyethylene ware
**FILTERING & ERLENMEYER
POLYETHYLENE FLASKS**
for HIGH TEMPERATURE usage...HIGH TENSILE service



- Practically unbreakable
- Easy to clean
- Chemically resistant at high temperatures
- High softening point
- Low brittleness temperature
- Low vapor transmission rate
- Wide temperature utility range

Especially constructed with heavy walls to withstand vacuum, these flasks hold up to 500 cc.

Subject to quantity discounts of 5% in dozen lots . . . 10% in six dozen lots . . . one type or assorted.

#1229
Filtering Flask 500 cc. capacity
\$3.50 each

#1228
Erlenmeyer Flask 500 cc. capacity
\$3.00 each

Write for Catalog E 956 covering our complete line of plastic laboratory supplies.

PALO LABORATORY SUPPLIES, Inc.
81 Reade Street • New York 7, N. Y.

EQUIPMENT NEWS

The information reported here is obtained from manufacturers and from other sources considered to be reliable. Science does not assume responsibility for the accuracy of the information. All inquiries concerning items listed should be addressed to Science, Room 740, 11 W. 42 St., New York 36, N.Y. Include the name(s) of the manufacturer(s) and the department number(s).

■ **GAS CHROMATOGRAPH** analyzes up to four components of a gas stream. Temperature control of $\pm 0.2^\circ\text{C}$ is provided for operation at temperatures up to

110°C. Provision is made for split-column operation. The gas-handling system incorporates a single-action, five-way linear sample injection valve. Accuracy is ± 1 percent. (Beckman Instruments, Inc., Dept. S588)

■ **MANUALLY OPERATED COMPUTING DEVICE** performs harmonic analyses and curve fittings on plotted or recorded curves. A curve with maximum amplitude of 5.9 in. and horizontal span of 9 in. can be accommodated. A longer curve may be subdivided for analysis. (Gerber Scientific Instrument Co., Dept. S584)

■ **AUTO THEODOLITE** detects angular displacements and provides an error signal which may be used to initiate automatic realignment. Modulated light from the theodolite is reflected back by a mirror. If the mirror is not precisely normal to the optic axis, some of the reflected light will be picked up by a light-sensitive device. Displacements as small as 1 sec of arc are detected. (Perkin-Elmer Corp., Dept. S559)

■ **ELECTRON MICROSCOPE** provides direct magnifications up to 160,000. Resolution is said to be at least 1.5 μm and as fine as 1 μm when all requisites for high resolution are met. Beam voltage is 40, 60, 80, or 100 kv. The vacuum system includes an object-chamber airlock which permits specimen change to be accomplished in 1 min. The lens system includes a condenser and three imaging lenses. Image diameter on the photographic plate is 96 mm. A 12-plate-holder camera and a roll-film cassette are rapidly interchangeable without admittance of air. (Siemens and Halske, Dept. S583)

■ **PROGRAMMER-COUNTER** is used to turn on and off test apparatus whose limits are sensed by strain gages or other transducers with a maximum output that does not exceed 100 mv d-c. The device has adjustable upper and lower operating limits. A counter registers each cycle of on-off operation. The counter may be of the preset type. (Spar Engineering and Development Inc., Dept. S581)

■ **LINEAR COUNT-RATE METER** is designed to power and to detect radioactivity sensed by Geiger-Müller, scintillation, and proportional-counting detectors. Six linear scales cover the ranges from 0 to 300 count/min to 0 to 300,000 count/min. The power supply is regulated. (Nuclear Measurement Corp., Dept. S593)

■ **DATA PRESENTATION UNIT** will present up to 20,000 alphanumeric characters per second. The storage-type oscillograph tube used retains the display until it is intentionally erased. Any one of 64 characters, approximately $\frac{1}{8}$ in. high, may be selected and recorded in any one of 1024 positions. A total of 400 characters may be displayed at one time. (Advanced Electronics Manufacturing Corp., Dept. S589)

■ **PROGRAMMED CURRENT PULSE GENERATOR** provides controlled, fully programmed current pulses for research on and testing of digital systems and components. High-level current pulses are supplied from a high-impedance source. Programming is based on an eight-step, periodically repeated pattern with a maximum step repetition frequency of 200 kcy/sec. Pulse width is continually

PHYSICS OF FISSION IN COMPLETE ENGLISH TRANSLATION

THE FIRST SUPPLEMENT TO THE RUSSIAN JOURNAL OF ATOMIC ENERGY

This significant collection is the first of the 1957 Supplements to the Soviet Journal of Atomic Energy. Papers were presented at the Conference on the Physics of Fission, Jan., 1956, at the Institute of Atomic Energy of the Academy of Sciences, USSR.

Experimental and theoretical work on the most important problems in the physics of fission is reviewed in the majority of these papers, which comprise 209 pages. The problems considered in these 12 papers have still not been solved, and a great deal of current research is being devoted to their solution. In the majority of cases, the results of this research are essentially further steps in the systematic development of earlier work.

The systematic nature of this survey of the present status of the important problems of the physics of fission is doubly important in that it is the first of this nature. This Supplement is thus vital both to physicists interested in fission, and to scientists and engineers working in the general atomic energy field. **\$30.00**

SOVIET JOURNAL OF ATOMIC ENERGY

1957 issues 1, 2, and 3, now available

Annual subscription, 12 issues **\$75.00**

Special price on the Physics of Fission Supplement, to subscribers to the Consultants Bureau translation of the 1957 Journal of Atomic Energy \$20.00

This significant Journal makes current Russian atomic energy research readily available to you. Consultants Bureau's policy of presenting complete, authoritative, cover-to-cover translations by scientists remains unchanged. This is the only approach which makes possible the fullest utilization of scientific research in translation. This high standard, to which our subscribers are accustomed, is maintained in the Journal of Atomic Energy, in the Supplement to it on the Physics of Fission, as well as in our translations of other journals and other disciplines.

Despite the doubling in size of "Atomnaya Energiya", Consultants Bureau's price for a subscription to the complete translation for one year, 12 issues, remains **\$75.00**. Single issues are available at \$20.00 each. Single papers are \$12.50 each.

Consultants Bureau translations by bilingual physicists. All material translated cover-to-cover, staple bound, clearly reproduced by the multilith process; all diagrams, photographs, and tabular material integral with the text. Single papers from journals are available—write for free Table of Contents.

Consultants Bureau is still seeking Scientist Translators

CONSULTANTS BUREAU, INC.

227 WEST 17th STREET, NEW YORK 11, N. Y. — U.S.A.
Telephone: ALgonquin 5-0713 • Cable Address: CONBUREAU, NEW YORK

adjustable from 0.5 to 50 μ sec. Rise time is variable from 0.15 to 2 μ sec, fall time from 0.15 to 2 μ sec. (Rese Engineering, Inc., Dept. S591)

■ **PLANIMETER** for integrating linear strip-chart records is designed to accept charts up to 3 7/16 in. wide. The curve is followed by a pointer that is positioned by a hand-controlled knob. A variable-speed, foot-control drive permits the operator to adjust the speed of traverse to his ability to follow the curve. Optimum accuracy is ± 0.1 percent. A similar instrument is available for integrating square-root charts. (Librascope, Inc., Dept. S592)

■ **DIRECT-RECORDING OSCILLOGRAPH** provides 20 recording speeds from approximately 0.08 to 128 in./sec. Illumination of the galvanometers is provided by a single source whose intensity is adjusted automatically to each recording speed range. Up to 50 recording channels may be provided. Frequencies as high as 3000 cy/sec and trace velocities above 30,000 in./sec can be recorded and viewed immediately without processing. (Midwestern Instruments, Dept. S582)

■ **VOLTAGE REFERENCE SUPPLY** is designed to replace No. 6 dry cells in instruments and controls. The supply, designed to resemble the dry cell and substitute for it with no modification requirements, supplies 1.5 v at 6 ma with 0.25 percent stability to input variations from 108 to 125 v. (Performance Measurements Co., Dept. S604)

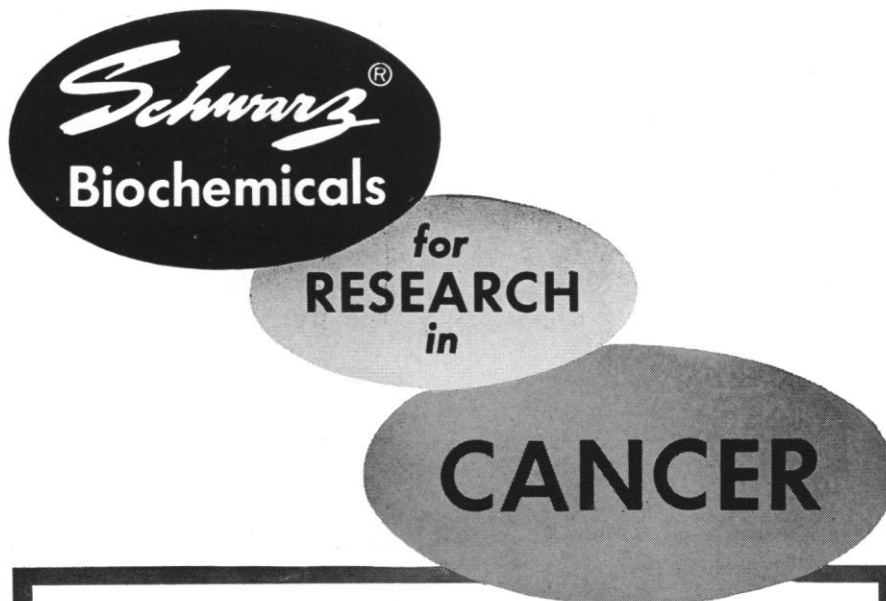
■ **DIFFERENTIAL PRESSURE TRANSDUCER** measures pressures in full-scale ranges from ± 0.1 to ± 100 lb/in². The measurement principle is a magnetic pressure-sensing diaphragm operating between coils in a magnetic reluctance system with two active arms. Full scale output is typically 40 mv/v. Linearity is ± 1 percent of range, and hysteresis error is within 1 percent of maximum pressure excursion. (Pace Engineering Co., Dept. S598)

■ **RECORDING BALANCE**, manufactured by Sartorius-Göttingen, is available in ranges from 0 to 100 μ g to 0 to 10,000 μ g. The balance has a quartz beam suspended from a 7-mil torsion wire. The object to be weighed is suspended from the end of the beam and counterbalanced. Changes in weight are counteracted by magnetic force to maintain the position of the beam. The change in current required to effect compensation can be used to record weight changes. The balance may be operated in vacuum. (C. A. Brinkman and Co., Inc., Dept. S594)

JOSHUA STERN

National Bureau of Standards

13 SEPTEMBER 1957



NUCLEIC ACIDS
for growth studies.

YEAST ADENYLIC ACID
for its inhibition of tumor growth in mice.

PURINE COMPOUNDS
for growth inhibition studies.

N-ETHYL MALEIMIDE
for its reported antimetabolic effect in tissue culture of chick fibroblast.

TRIPHENYL TETRAZOLIUM CHLORIDE
for determination of cancerous tissue.

TRIPHOSADEN®
(Schwarz Brand of Adenosine Triphosphate) for phosphorylation studies.

These Schwarz fine chemicals satisfy the exacting requirements of products intended for laboratory and biochemical use.

To assure the user of highest quality and purity, rigid specifications in accordance with latest literature are established for each product, each lot is carefully analyzed and checked before shipment, complete records are permanently kept, and an analysis is furnished the user if desired.

Quantity production resulting from the wide preference and demand for Schwarz high-quality biochemicals provides ample supplies at low cost. Write for informative technical bulletins, specifications, references to literature and latest complete price list.

SCHWARZ LABORATORIES, INC.

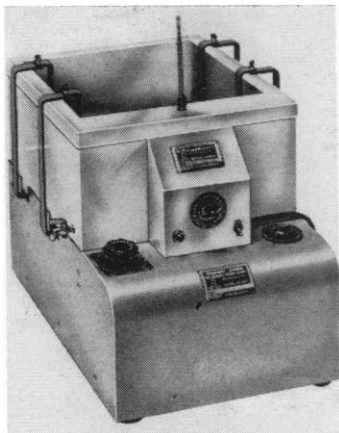
*Leading Manufacturers of Yeast Biochemicals
and Fine Chemicals*

230 WASHINGTON STREET, MOUNT VERNON, NEW YORK

SL-358

ROTARY WATER BATH SHAKER

- Variable speed range 85 to 285 osc. per min.
- Temperature range 30°C. to 100°C. $\pm .5^\circ$
- Available for shaking various size flasks.



A shaking apparatus that is extremely useful for cultivating microorganisms under conditions of aeration and with more precise temperature control than is possible in an incubator. It is particularly valuable in obtaining bacterial growth curves.

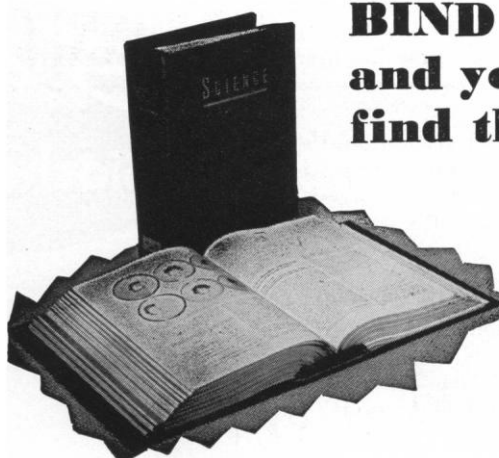
Detailed information available upon request



NEW BRUNSWICK SCIENTIFIC CO.

PRECISION LABORATORY APPARATUS

P. O. BOX 606 • NEW BRUNSWICK, N. J.



BIND 'EM...
and you'll
find them!

Keep your copies of **SCIENCE** always available for quick, easy reference in this attractive, practical binder. Simply snap the magazine in or out in a few seconds—no punching or mutilating. It opens **FLAT**—for easy reference and readability. Sturdily constructed—holds 26 issues.

This beautiful maroon buckram binder stamped in gold leaf will make a fine addition to your library. Only \$3.25 postpaid; add 50¢ for orders outside U.S.A. (Personal check or money order, please.) Name of owner, 75¢ extra; year of issue, 50¢ extra.

SCIENCE

• 1515 Massachusetts Ave., NW,
Washington 5, D.C.

PERSONNEL PLACEMENT

CLASSIFIED: 18¢ per word, minimum charge \$3.60. Use of Box Number counts as 10 additional words. Payment in advance is required.

COPY for classified ads must reach **SCIENCE** 2 weeks before date of issue (Friday of every week).

DISPLAY: Rates listed below — no charge for Box Number. Monthly invoices will be sent on a charge account basis — provided that satisfactory credit is established.

Single insertion	\$22.00 per inch
13 times in 1 year	21.00 per inch
26 times in 1 year	20.00 per inch
52 times in 1 year	19.00 per inch

For PROOFS on display ads, copy must reach **SCIENCE** 4 weeks before date of issue (Friday of every week).

Replies to blind ads should be addressed as follows:

Box (give number)
Science
1515 Massachusetts Ave., NW
Washington 5, D.C.

POSITIONS OPEN

Biostatistician (medical). For new growing non-profit organization under national, medical, and hospital association sponsorship. Duties: responsible for statistical activities under direction of the director of the Commission; program involves research and service in statistics and data processing, on a nation-wide basis, using clinical medical data. Permanent. Masters minimum. Starting salary, \$7700-\$12,000 depending on qualifications. Write to Dr. Virgil N. Slee, Director, Commission on Professional and Hospital Activities, Inc., 211 First National Building, Ann Arbor, Michigan. 9/13

POSITIONS OPEN

(a) **Clinical Chemist, Ph.D.**, qualified to supervise department; ample opportunity for research; department well staffed, well equipped; 250-bed general hospital; New England. \$9500.
(b) **Physiologist or Biophysicist, Ph.D.**, well trained in general physiology or neurophysiology with adequate research experience; should be interested in general area of effects of light and radiant energy on human organism; newly created position as result of expansion program on light; university city, Midwest.
(c) **Microbiologist** qualified in virology or experimental immunology; medical school pediatric research department; South.
(d) **Bacteriologist**, preferably Ph.D.; association, group of pathologists; medical school city, East.
(e) **Instructor** in general biology; liberal arts college; Pennsylvania.
(f) **Bacteriologist**, supervisory position, infectious diseases research laboratory; affiliated medical school; master's required; opportunity faculty appointment; East. S9-2, Medical Bureau, Burneice Larson, Director, 900 North Michigan Avenue, Chicago. X

Medical Technicians, General (male) for employment with U.S. Government. Under 38 years of age. Must be U.S. citizen. Military experience in medical field desirable. Knowledge of x-ray and laboratory procedures necessary. Willing to serve overseas. Beginning salary \$4080 per annum plus allowances. We request that initial reply include professional background and military experience. Box 235, **SCIENCE**. 8/16, 23, 30; 9/6, 13, 20, 27

MICROBIOLOGIST TISSUE CULTURE. Position available large expanding research and routine laboratory. Experience in tissue-culture methods for research project. Minimal supervision of clinical diagnostic bacteriology. Salary \$7000 to \$8000 per year. Address Director, Singer Research Laboratory, Allegheny General Hospital, Pittsburgh 12, Pa. Include curriculum vitae. 8/30; 9/6, 13

POSITIONS OPEN

Director, diagnostic and research tuberculosis laboratory, central Florida, physician or non-physician microbiologist or clinical chemist. Part-time employment will be considered. Write Dr. Albert V. Hardy, Director, Bureau of Laboratories, State Board of Health, P.O. Box 210, Jacksonville, Florida. uc

PHARMACOLOGIST

To Direct Research Group

We seek a top-level scientist and administrator to direct and expand a program with a wide variety of projects. Eastern seaboard location. Salary open. If you are interested in an outstanding industrial opportunity with a large pharmaceutical manufacturer, send complete résumé.

Box 261, **SCIENCE**

SCIENCE TEACHERS, LIBRARIANS, ADMINISTRATORS urgently needed for September positions in many states and many foreign lands. No fees. Apply direct. Also study awards. Rush \$1 for complete job data, salaries. **CRUSADE, SCI, Box 99, Station G, Brooklyn 22, N.Y. EW TF**

POSITIONS WANTED

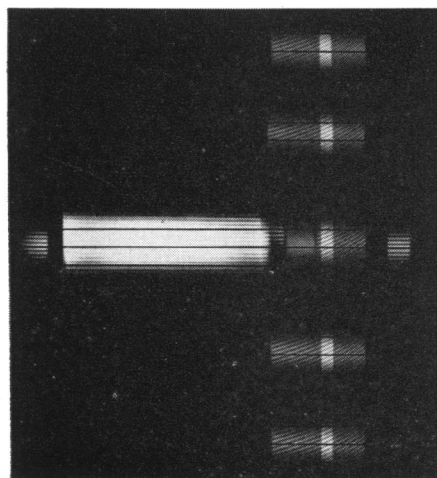
Assistant eager for medico-natural or social science post; 3 years of chemi-technical experience; 2 years university experimental psychology. Box 245, **SCIENCE**. X

New Measurements on Polymers with the Ultracentrifuge

By photographing molecules while they are under centrifugal force, the Analytical Ultracentrifuge allows direct measurement of molecular weight, sedimentation constant, purity—and gives information on homogeneity, molecular weight distribution, molecular shape and size.

Proteins

New developments in equipment and technique have extended the classic biochemical uses of the Ultracentrifuge to more precise measurements, to smaller molecules, and to a variety of different molecular studies. *Synthetic-boundary cells* allow sedimentation measurements of molecules to molecular weights as low as a few hundred. *Interference optics* permit direct calculation of molecular weight without additional data. *Absorption optics* accurately measure nucleic acid concentrations to 0.001% ("Ultracentrifugal Analysis of Dilute Solutions," Schumaker and Schachman, *Biochimica et Biophysica Acta*, 23,628, 1957).

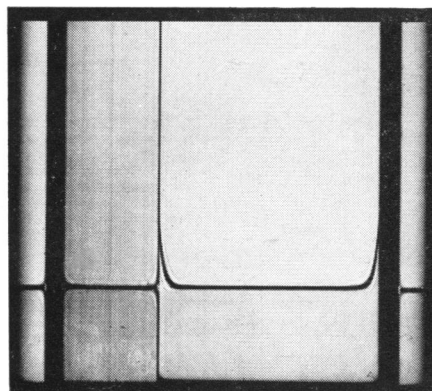


INTERFERENCE FRINGE PATTERN of 5 cells run simultaneously in An-G type rotor.

Plastics

The addition of high temperature equipment now enables Ultracentrifuge runs on plastics and other materials which are insoluble at lower temperatures. Control is better than 0.1 degree at temperatures to above 100° C.

New theoretical developments permit direct measurement of weight-average-molecular weights in polydisperse systems ("Direct Ultracentrifuge Molecular Weights of Synthetic High Polymers," Kegeles, Klainer and Salem, presented at 31st National Colloid Symposium, New York, June 27-29, 1957).

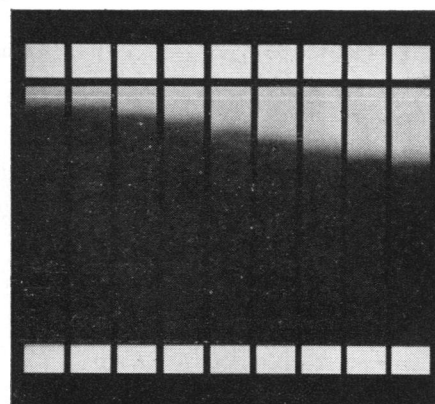


CONCENTRATION IS MEASURED early in low-speed run at meniscus and outer cell edge, and weight average calculated directly.

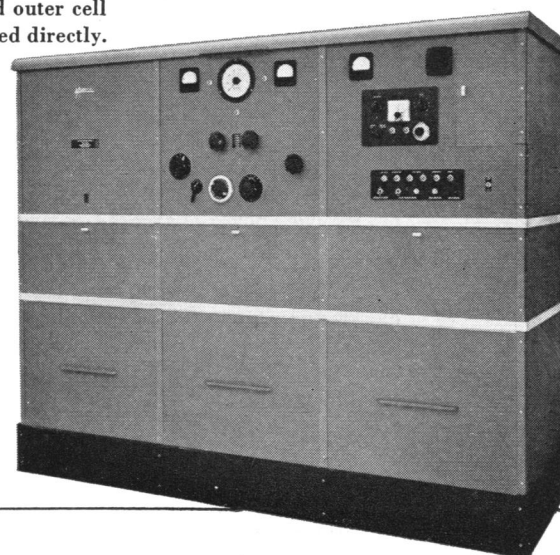
BECKMAN/SPINCO
Analytical Ultracentrifuge,
Model "E." Speeds to 60,000 rpm,
centrifugal forces to 260,000 G.
Available with refrigeration,
heating and vacuum systems;
interchangeable analytical and
preparative rotors; absorption,
schlieren and Rayleigh fringe
optical systems.

Petroleum

Both "Preparative" and "Analytical" Spinco Ultracentrifuges have been found to offer new information in studying crude oils and petroleum fractions ("A Study of the Colloidal Characteristics of Petroleum Using the Ultracentrifuge," Ray, Witherspoon and Grim, presented at 31st National Colloid Symposium, New York, June 27-29, 1957).



ABSORPTION PATTERNS showing sedimentation of petroleum dispersed in benzene.

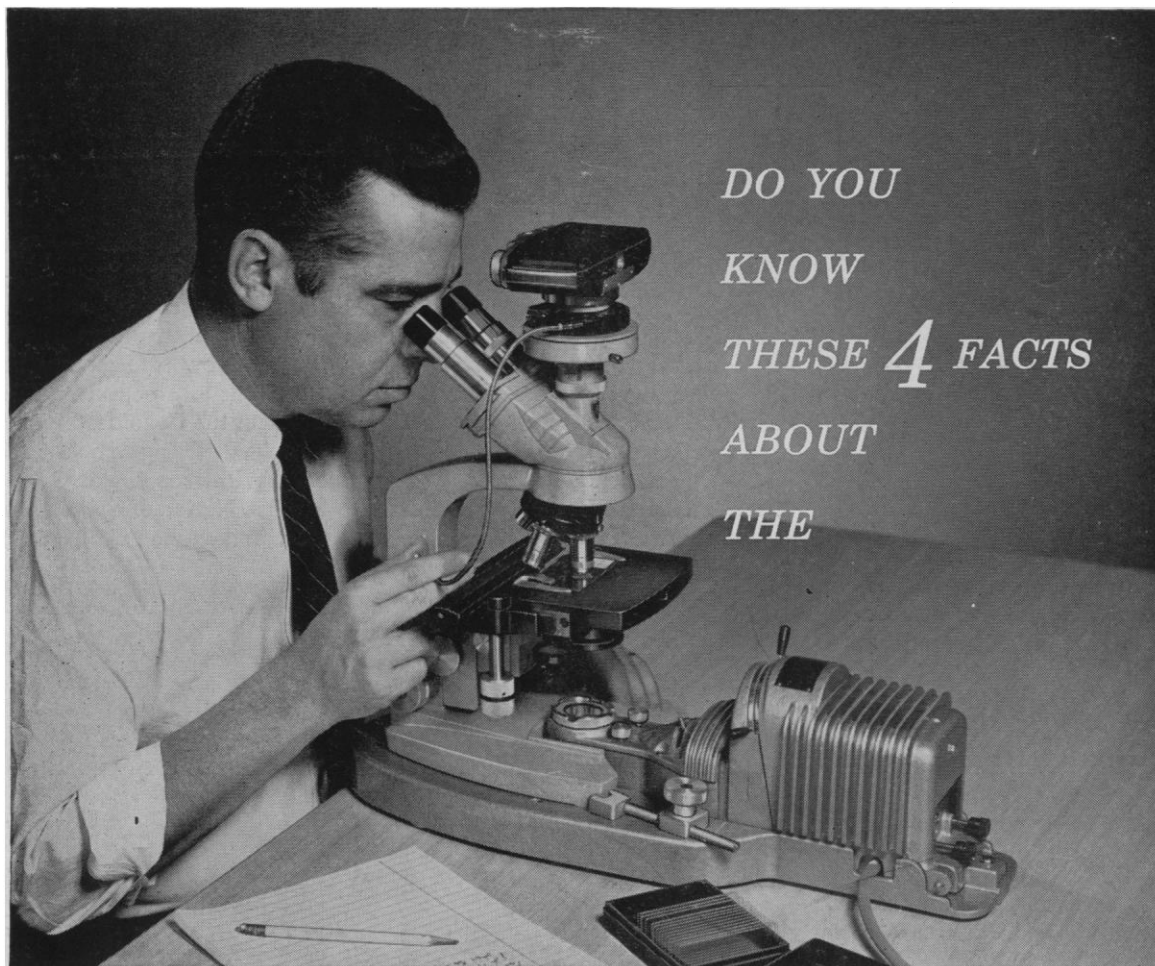


Our Technical Sales Department will be happy to correspond with you on Ultracentrifuges or ultracentrifuge applications. Address Beckman/Spinco Division, Stanford Industrial Park, Palo Alto 5, California.

Beckman®

Spinco Division

a division of Beckman Instruments, Inc.



DO YOU
KNOW
THESE 4 FACTS
ABOUT
THE



Ortho-Illuminator?

- 1 ASSURES MAXIMUM OPTICAL PERFORMANCE OF YOUR MICROSCOPE**—Koehler type illumination—ideal for bright field . . . phase . . . interference . . . polarizing . . . and dark field microscopy and photomicrography. Numerical aperture . . . and field diaphragm settings regulated accurately and effectively—permit full resolving power of your microscope.
- 2 OFFERS WIDE SELECTION OF FILTERS**—Eight levels of intensity . . . plus daylight, green and red filters . . . quickly selectable by simple finger-tip rotation of turret mounted filters. Optimum intensity and correct contrasting color selection are very important factors to reveal the specimen detail you're investigating.
- 3 PROVIDES PERMANENT ALIGNMENT WITH MICROSCOPE**—Three point positioning device precisely locates and rigidly retains any make microscope equipped with horseshoe base. Microscope may be removed and easily repositioned against locating device without disturbing absolute alignment. Near parallel beam of light evenly illuminates entire field of view.
- 4 COSTS LESS THAN YOU THINK**—Model 600 AO-Spencer Ortho-Illuminator *complete* . . . \$165.00. Optically and mechanically designed to give you years of trouble-free service . . . maximum efficiency . . . and reduced fatigue.

formerly available from Silge & Kuhne, San Francisco

Write Dept. U-2 for ORTHO-ILLUMINATOR Brochure SB-600

American Optical Company

Instrument Division • Buffalo 15, N. Y.