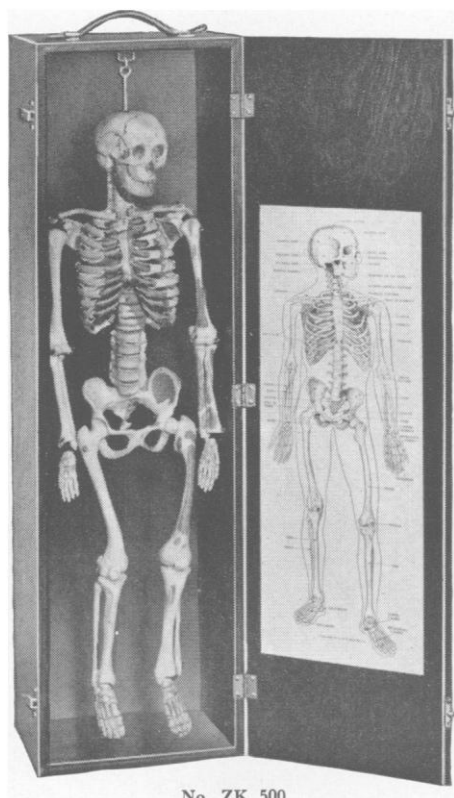


MINIATURE SYNTHETIC HUMAN SKELETON

Superbly Adapted For Elementary Work Where Economy Is Important

Only 26 Inches Tall



No. ZK 500

**Accurately Scaled
In Durable, Washable
Synthetic Bone**

**A Wooden Case
And Plastic Cover
Are Included**

Designed for use in high school biology courses, the miniature skeleton has proved of value in psychology, health, safety, first aid, and physical education courses. The low price enables the smaller schools to have at least one skeleton in the science department. The skeleton, with wooden case, weighs less than 20 pounds making it easy to carry from room to room.

The wooden case is constructed to permit the rotation of the skeleton within the case. An illustrated key card on the door identifies the principal bones. This arrangement permits a student to study the guide and skeleton together in order to more easily understand the skeleton. If desired, the skeleton can be removed from the case and hung in a more convenient place. The hook on the skull provides for attachment to other types of support.

Each skeleton includes an attractive wooden case, plastic skeleton cover, and an illustrated key card.

ZK500. MINIATURE SKELETON, Painted. The muscular origins are painted in blue, and the muscular insertions are in red on one side of the skeleton. Complete, with wooden case, plastic skeleton cover, and illustrated key card.
Each, \$130.00

ZK510. MINIATURE SKELETON. The skeleton is the same as ZK500, but the muscular origins and insertions are not painted. Many teachers prefer to paint the muscular insertions and origins themselves, and the surfaces of these skeletons readily accept paint. Complete with attractive wooden case, illustrated key card, and plastic cover.
Each, \$115.00

Full, Life Size Skeletons available at \$190.00

W. M. WELCH SCIENTIFIC COMPANY

DIVISION OF W. M. WELCH MANUFACTURING COMPANY

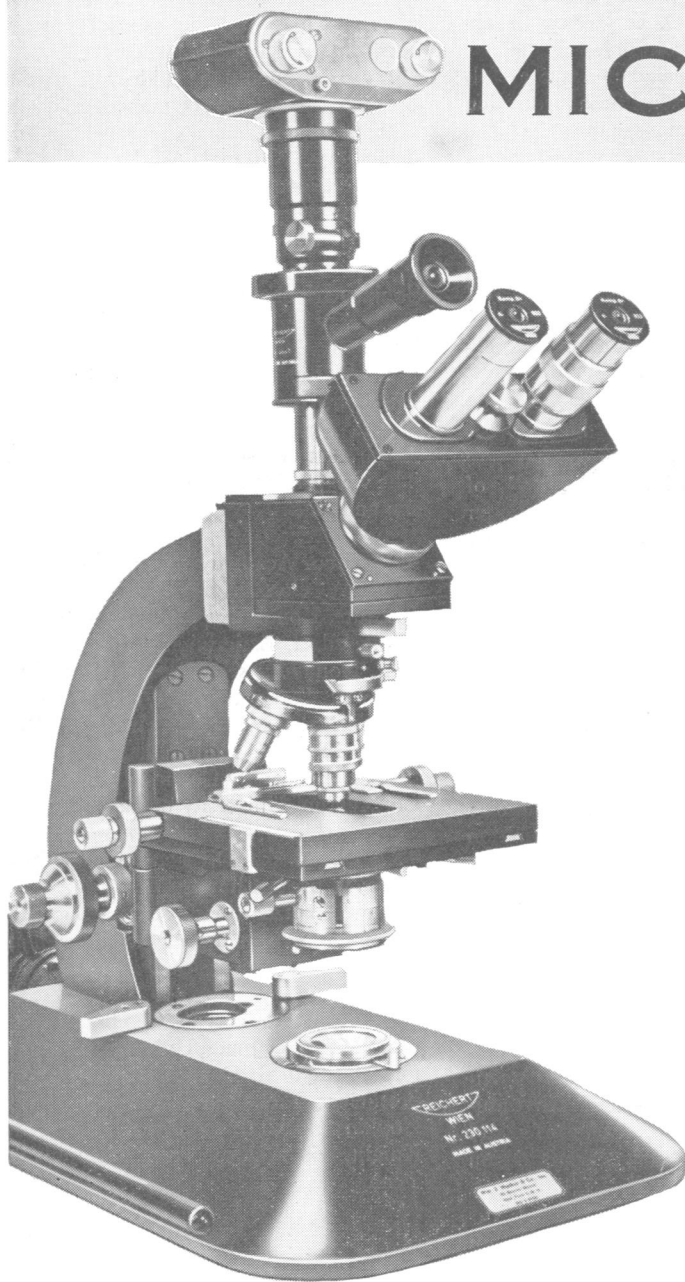
ESTABLISHED 1880

1515 Sedgwick Street, Dept. E Chicago 10, Illinois, U. S. A.

Manufacturers of Scientific Instruments and Laboratory Apparatus

New Concepts of

PHASE MICROSCOPY



THE *Zetopan*
BY
REICHERT

WORLD'S MOST ADVANCED RESEARCH MICROSCOPE

The "Anoptral" phase equipment is just one of the advancements available for the Reichert ZETOPAN that has set new high standards in vital microscopy.

Contrast is heightened, resolutions increased, stray light eliminated.

Other features of the Zetopan include:

- ▶ UNIVERSAL CONDENSER for long working distances — allows instant change-over.
- ▶ BUILT-IN ILLUMINATING SYSTEMS for transmitted, incident and mixed light.
- ▶ SEPARATE INDEPENDENT PHOTO TUBE for instant changeover to photomicrography.
- ▶ ELIMINATION OF SPHERICAL ABERRATION—new "aplanatic" objectives render image of complete flatness.

The Zetopan provides infinite versatility for all kinds of microscopic investigations, including bright and dark field transmitted and incident light, phase contrast or polarized light. Changeovers are instantaneous.

FOR COMPLETE DETAILS SEND FOR ILLUSTRATED BROCHURE

WILLIAM J. HACKER & CO., INC.

82 BEAVER STREET

NEW YORK 5, NEW YORK

ALSO ASK ABOUT OUR: "FLUOREX" for fluorescence microscopy with arc lamps of low and high intensity made especially for histological and bacteriological work and examination of antigen-antibody reactions.

"MICRO-VIEWSCOPE" — Combines in one instrument a microscope with built-in illuminating system and projection elements that render a brilliant image on the 8" viewing screen of the unit.

U.S. Representative for Reichert Optical Works, Vienna, Austria. Famous for High Quality Optical Equipment since 1876.