

RARE CHEMICALS OF HIGH PURITY **TO SUPPLY THE NEEDS OF BIOCHEMICAL RESEARCH**

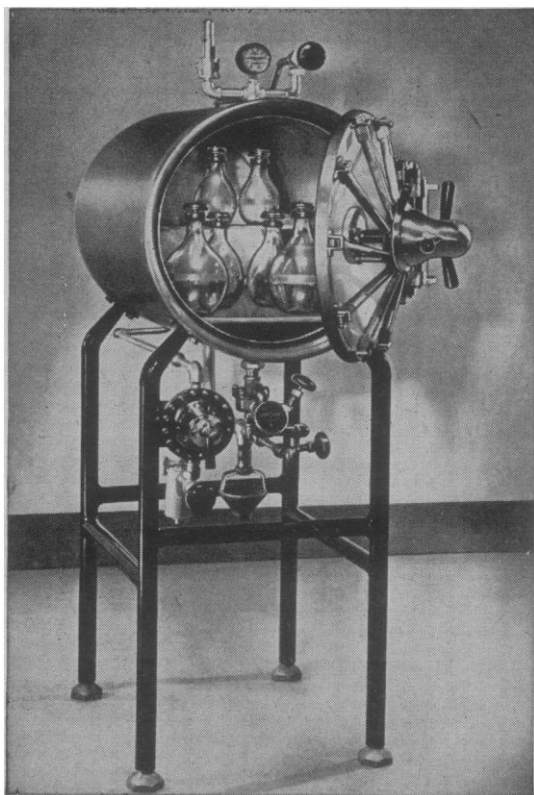
Detailed, Pertinent, Analytical Data For Every Product

NUCLEIC ACID DERIVATIVES	Thymidine Thymidylic Acid	Desoxycytidine Desoxycytidylic Acid
ANTI-VITAMINS	Sodium ω -Methylpantothenic Acid	
AMINO ACIDS	D- & L-Serine D- & L-Methionine D- & L-Ethionine D- & L-Homocystine L-3,4-Dihydroxyphenylalanine (DOPA)	L-Thiolhistidine L-Ergothionine Homocysteine Thiolacone Glycylglycine
CARBOHYDRATE INTERMEDIATES	<i>cis</i> -Aconitic Acid	D-Isocitric Acid
FATTY ACIDS	Ethyl Linoleate	Ethyl Linolenate
PLANT HORMONES	Ethyl 3-Indoleacetate	Chlorophenoxyisobutyric Acids
ALSO	Pyridoxal Phosphate	Dimethyl- β -Propiothetin

CALIFORNIA FOUNDATION FOR BIOCHEMICAL RESEARCH

3408 Fowler Street, Los Angeles 63, Calif.

A NON-PROFIT CORPORATION



When ACCURACY is important...

CASTLE AUTOCLAVES are ideally suited to precision laboratory work because uniform temperature is rigidly maintained throughout the chamber. This temperature is selective at any point from 212°F. to 260°F., hence adaptable for all routine and research work.

SINGLE WALL TYPE is generally suitable for laboratory procedures. It is equipped with condenser hood which prevents moisture dripping on contents.

DOUBLE WALL TYPE gives you the drying effect of a separate pressure jacket. This type can be used for general surgical purposes.

Interior equipment to meet your requirements. Write: Wilmot Castle Co., 1212 University Ave., Rochester 7, N. Y.

Single wall No. 1826-L

Castle Bacteriological
Apparatus