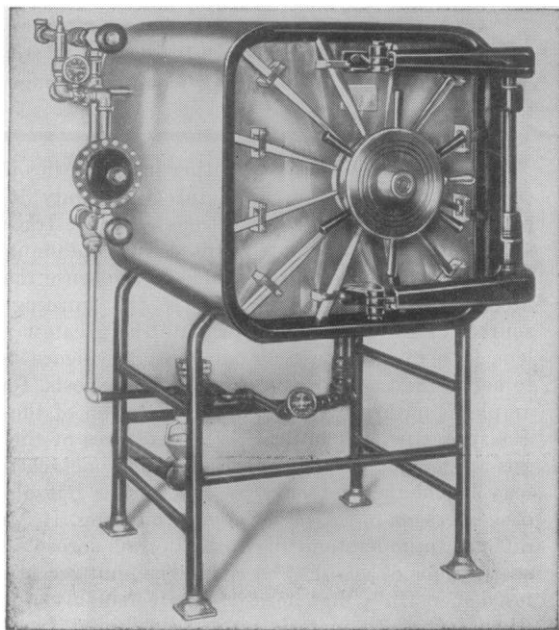


For Large Capacity Laboratory Work

CASTLE RECTANGULAR AUTOCLAVES



Large laboratories find the answer to their heavy sterilizing requirements in a Castle Rectangular Autoclave.

These Autoclaves are equipped with dual discharge for three functions: (1) sterilization at temperature of pure steam; (2) sterilization at temperature of flowing steam; (3) sterilization at temperature of steam and air combined.

Every feature of these heavy-duty Autoclaves is designed to simplify its operation and guarantee its safety. For full details write for "Bulletin 2-5." Wilmot Castle Company, 1212 University Avenue, Rochester 7, N. Y.

Castle Bacteriological Apparatus

SCHOTT Metallic Interference Filters

Narrow Band • Monochromatic

Transmission up to 45%.

Half band width down to 5 mμ.

Size of filters: 2" × 2"

Regular quality IL: Tolerance at peak wave length ± 5 mμ

Precision quality PIL: Tolerance at peak wave length ± 2 mμ

Peak wave-length region: from 400 to 1,000 mμ

Filters can be cemented on colored glass to eliminate residual transmission.

Ask for Bulletin NBF now in preparation

FISH-SCHURMAN CORPORATION
74 Portman Road, New Rochelle, N. Y.

Fish-Schurman

NUCLEOPROTEINS

and

DERIVATIVES



Adenosine Triphosphate
Adenine
Adenine Sulfate
Adenylic Acid
Adenosine
Cozymase
Cytidine
Cytidine Sulfate
Cytidylic Acid
Cytosine
Desoxyribonucleic Acid
Fructose-6-Phosphate
(Barium)
Glucose-1-Phosphate
(Potassium)
Glutathione
Guanine
Guanine Hydrochloride
Guanosine
Guanylic Acid
Hexase Diphosphate

Hypoxanthine
Inostine
Iron Nucleate
Manganese Nucleate
5 Methyl Uracil
Nucleic Acid (Ribose
Nucleic Acid)
Protamine Nucleate
Phosphoglyceric Acid
d Ribose
Sodium Nucleate
Sodium Desoxyribonucleate
Ammonium Uridylate
Thymine (5 Methyl
Uracil)
Uracil
Uridine
Uridylic Acid
Uramil
Xanthine
Xanthosine

*Write for Revised Catalogue S#901 Listing
a Complete Selection of Nearly 500
Important Biochemicals*

NUTRITIONAL BIOCHEMICALS CORP.

21010 Miles Avenue • Cleveland 28, Ohio