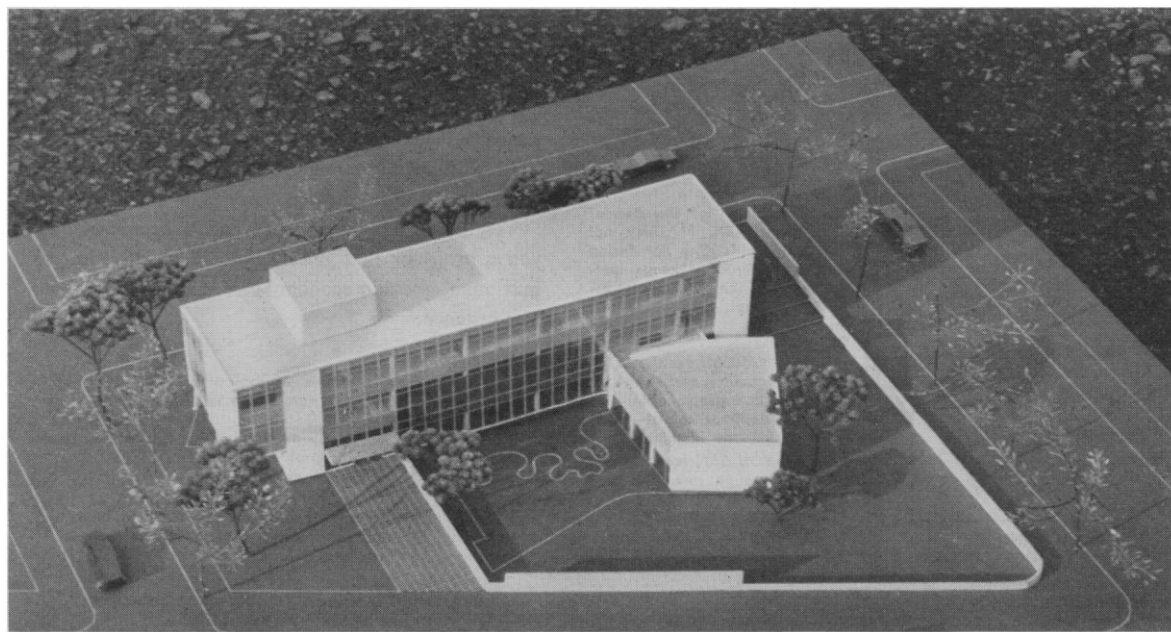




IN 1946, with the aid of approximately \$100,000 generously contributed by members, affiliated and associated societies, and industrial laboratories, the AAAS acquired its present property on Scott Circle in the heart of Washington. No better location for permanent headquarters could be desired; but funds were exhausted in the purchase of the property, and the Association and The American Psychological Association have been making the most of an old, converted residence. AAAS membership has since increased by 20,000, but the ancient structure that serves as headquarters has not displayed the same capacity for growth as the organization it houses; hence the thoughts of officers and staff have turned persistently to a new building.

Under the chairmanship of Roger Adams, plans for

a new structure have steadily progressed. A proposal to erect an eight-story edifice on the site, to accommodate not only the Association but other organizations, was discarded. Occupancy must be limited to nonprofit organizations, and there are not enough homeless societies to fill such a building. Current thinking favors a functional structure that will house a growing organization, and six sets of plans for such a building are now on hand. Of four submitted by students of Walter Gropius, one is reproduced here. Complete with detached auditorium, such a building will cost approximately \$500,000 at current construction prices. No final selection of plans has been made, nor have steps been taken to raise half a million dollars. Both are projects for—it is hoped—the near future, though realization may be more remote.



SCIENCE, founded in 1880, is published each Friday by the American Association for the Advancement of Science at the Business Press, 10 McGovern Ave., Lancaster, Pa. Entered as second-class matter at the Post Office at Lancaster, Pa., January 13, 1948, under the Act of March 3, 1879. Acceptance for mailing at the special rate postage provided for in the Act of February 28, 1925, embodied in Paragraph (d-2) Section 34.40 P. L. & R. of 1948.

All correspondence should be sent to SCIENCE, 1515 Massachusetts Ave., N.W., Washington 5, D. C. The AAAS assumes no responsibility for the safety of manuscripts or for the opinions expressed by contributors. Four weeks'

notice is required for change of address, and an address stencil label from a recent issue must be furnished. Claims for a missing number will be allowed only if received within 60 days from date of issue.

Annual subscriptions, \$7.50; single copies, \$.25; foreign postage, outside the Pan-American Union, \$1.00; Canadian postage, \$.50. Special rates to members of the AAAS.

The AAAS also publishes THE SCIENTIFIC MONTHLY. Subscription rates on request.