

VOL. 108 • NO. 2814 • PAGES 615-642

December 3, 1948

Science



Prehistoric Eskimo Dwelling, Baffin Island

(See page 641)

FISHER

Isotemp OVENS

Provide
Constant, Uniform Heat

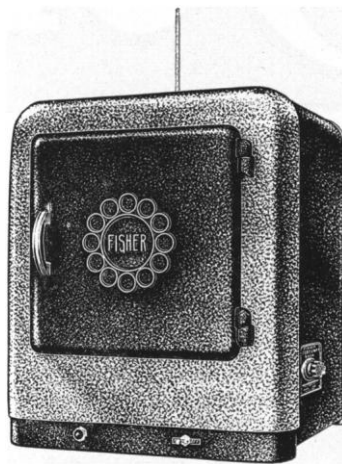
The Fisher Isotemp Oven provides constant, uniform temperatures throughout the entire oven chamber. Its heating range of 35° to 200° C. can be thermostatically controlled to within $\pm 0.5^\circ$ C.

The sheet aluminum oven chamber is 12 inches square by 12½ inches deep, providing a total useful three-shelf area of 430 square inches.

The nickel-chromium heating elements are embedded outside the oven chamber; the thermostat contacts are sealed in a metal capsule and the door opens automatically under pressure.

Furnished with three shelves and thermometer, for 115 volt A.C., or for 230 volt A.C. **\$125.00**

(Specify voltage when ordering)



The Isotemp Oven has a cast aluminum frame; it serves equally well for heating, drying and sterilizing.



Placement of heaters, complete insulation and high thermal conductivity of aluminum interior result in uniform temperature on all three shelves—front to back.

Manufacturers—Distributors

FISHER SCIENTIFIC CO.

717 Forbes St., Pittsburgh (19), Pa.
2109 Locust St., St. Louis (3), Mo.



EIMER AND AMEND

Greenwich and Morton Streets
New York (14), New York

Headquarters for Laboratory Supplies