

VOL. 108 • NO. 2806 • PAGES 367-394

October 8, 1948

# Science



Cornell's New Laboratory of Nuclear Studies

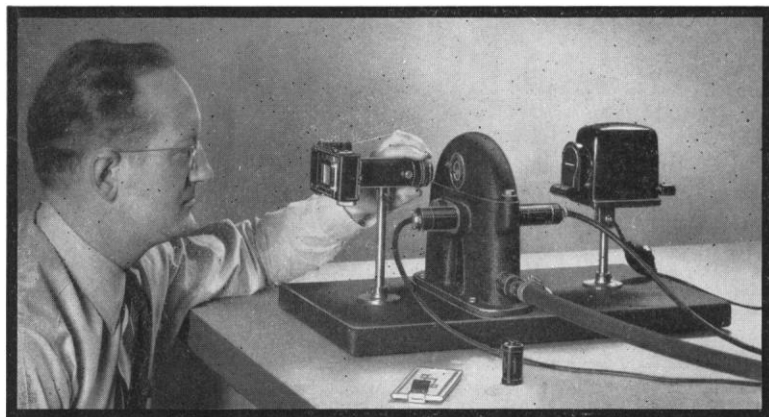
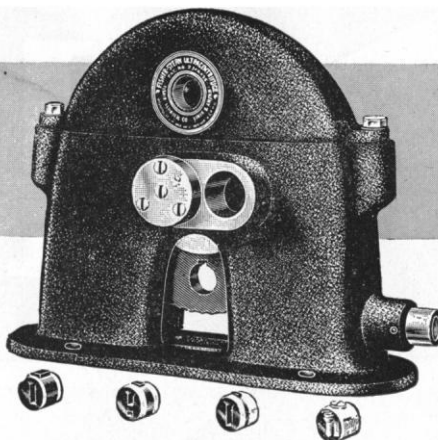
(See page 375)



# Fisher-Stern ULTRACENTRIFUGE

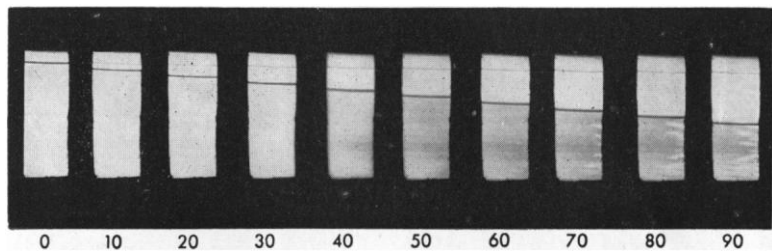
*... a New  
Research Tool*

**FOR EXPLORING THE  
APPLICATIONS OF ULTRACENTRIFUGATION**



**Above**—The camera and accessories permit visual inspection and photographing of samples regardless of the color of the liquid or the precipitate.

**Below** — Actual photographic record of sedimentation occurring at 9,000 r. p. m. when tobacco virus protein was subjected to ultracentrifugation. Note progressive separation by 10-minute intervals.



**Speeds up to 20,000 r.p.m.**

**Exerts force 26,000  
times gravity.**

**Visual inspection or  
photography.**

Ultracentrifugation can now be applied to research problems in many more laboratories by employing the Fisher-Stern Ultracentrifuge. It is moderately priced and available from stock.

Write for complete description of this centrifuge and the growing applications of ultracentrifugation.

*Headquarters for Laboratory Supplies*

**FISHER SCIENTIFIC CO.**



**EIMER AND AMEND**

717 Forbes St., Pittsburgh (19), Pa.

2109 Locust St., St. Louis (3), Mo.

In Canada: Fisher Scientific Co., Ltd., 904 St. James Street, Montreal, Quebec

Greenwich and Morton Streets

New York (14), New York