

RARE CHEMICALS

» » » » **T**HE EDWAL LABORATORIES is an organization of consulting chemists and engineers. In its founding years it engaged primarily in industrial research, analysis and control work. Succeeding years revealed the necessity for entering into the small scale manufacture of new chemicals which were needed for research problems and which could not be obtained elsewhere. This led in turn, to the production for sale of a number of pure chemicals which at the time were not commercially available.

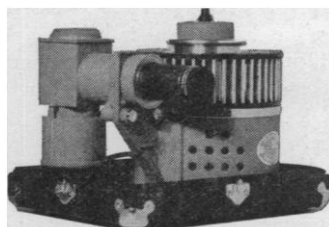
Although today facilities for large scale manufacture are available, an important part of our work is still devoted to the small lot production of new and rare chemicals. This service is in the hands of competent chemists, and is offered to all firms, individuals or schools engaged in research, development or production. A special "Small Lot Price List, No. 11" will be sent with our catalog when requested.

THE EDWAL LABORATORIES, Inc.

732 Federal Street CHICAGO, ILLINOIS

Rent a SELECTROSLIDE

For Conventions! Lectures!
Exhibits! Laboratory work!



All models of
Selectroslide
now available
on a rental
basis

Selectroslide is the most efficient and accurate projection equipment for 35 mm 2" x 2" slides on the market. All models have automatic and remote control.

"Standard" SELECTROSLIDE for 48 Slides with Projector accommodating bulbs from 300 to 1000 Watt.

"Compact" SELECTROSLIDE for 48 Slides—limited to 200 Watt bulbs.

"Junior" SELECTROSLIDE for 16 Slides—limited to 200 Watt bulbs.

Write for our RENTAL SCHEDULE and let us assist you in selecting the equipment best suited for your needs.

SPINDLER & SAUPPE, INC.

2201 Beverly Boulevard
Los Angeles, Calif.

OUR LEADING PRODUCTS—

Giemsa Stain

(Gradwohl)

Commission-Certified

\$2.00 for 2 ounces

Blood Grouping Sera

A and B—Price \$2.00 per 2 c.c.

Absorbed B—

(to differentiate A₁ from A₂)

Price \$3.00 per 1 c.c.

M and N

(in Paternity and Medico-legal cases)

Price \$5.00 per c.c.

OF HIGH TITER AND EFFICIENCY

GRADWOHL LABORATORIES

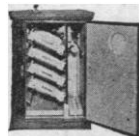
St. Louis, Missouri

3514 Lucas Avenue

Write for Price List of all Laboratory Products

WITHIN ONE DEGREE

Model 96



Here's an economical laboratory incubator with temperature control accurate to 1°F, regulated from outside. Write for descriptive folder with statements from users in important laboratories, testifying to accuracy and dependability.

AMERICAN ELECTRIC INCUBATOR CO.

Dept. S

New Brunswick, N. J.

THE SCIENCE PRESS PRINTING COMPANY

PRINTERS OF

SCIENTIFIC and EDUCATIONAL
JOURNALS,
MONOGRAPHS
and BOOKS

Correspondence Invited

LANCASTER, PENNSYLVANIA