

Physical Science

BY EHRET, SPOCK, SCHNEIDER, VAN DER MERWE, WAHLERT

College physics, chemistry, geology, astronomy, and mathematics are, in this new text, surveyed and unified by presenting the fundamentals and by emphasizing the interrelation of each. The scientific method and the philosophy of science are thoroughly embodied throughout the book. All the material has been thoroughly tested during several years' use with classes at New York University.

Ready in May. \$3.90 (probable)

N
E
W

B
O
O
K
S

Geomorphology

BY O. D. VON ENGELN

This new comprehensive basic text for courses in Geomorphology and Physiography will also be of great use to engineers, soil scientists, etc. Using the genetic approach throughout, the author thoroughly covers both systematic and regional geomorphology. All relief aspects of the solid surface of the earth are considered, the ocean floor as well as the land.

Ready in May. \$4.50 (probable)

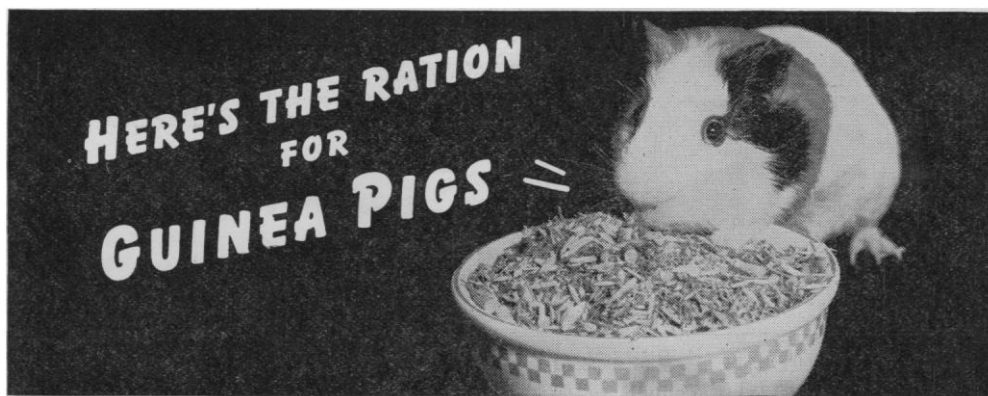
Introduction to Semi-Micro Qualitative Chemical Analysis

BY LOUIS J. CURTMAN

This text, prepared especially for the shorter course, incorporates the same notable features as the author's earlier successful texts. It deals briefly but adequately with theory, calculations, and methods. All experiments are based on actual laboratory tests with accompanying reasons for each step. Many practical devices, originated by the author, to insure better laboratory results are included.

Ready in May. \$2.75 (probable)

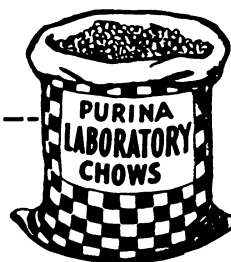
THE
MACMILLAN
COMPANY
60 FIFTH AVE.,
NEW YORK



FOR GOOD RESULTS—ECONOMY—EASY FEEDING

To solve your guinea pig feeding problems, feed Purina Complete Rabbit Chow along with greens or some other good source of vitamin C. Purina Complete Rabbit Chow is a scientifically balanced ration—built to promote high reproduction, sound, uniform growth, and good condition of body, skin and coat when fed to healthy

animals under sanitary conditions. Purina Complete Rabbit Chow is low in feeding cost—only about 4c per month, including cost of greens, for mature guinea pigs. Also easy to feed! There's a Purina Laboratory Chow to suit your needs if you have colonies of rats, mice, rabbits, dogs, cats, or monkeys. Clip coupon below for free samples and free book.



----- SEND COUPON FOR DETAILS AND SAMPLES -----

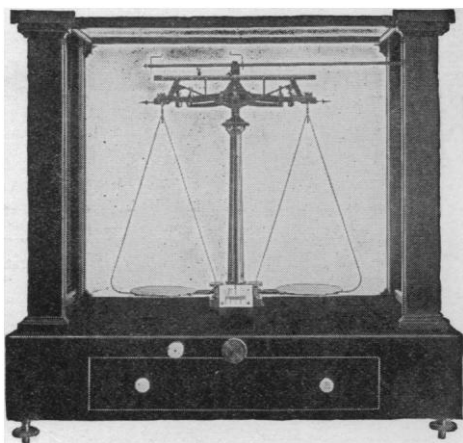
PURINA MILLS, 1704 Checkerboard Square, St. Louis, Mo.

Please send sample of diet for following animals, and bulletin giving ingredients, cost and feeding directions.

I keep about (No.)RatsMiceDogsRabbitsGuinea Pigs

Name.....Dept.....

Institution.....Address.....



No. 10 Analytical Balance

HENRY TROEMNER

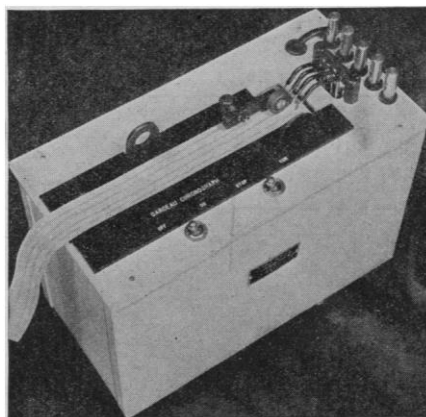
The Standard of Excellence for 102 years.

Manufacturer of the highest grade Analytical, Assay and Pulp Balances and Weights of Precision.

Catalog 1929S

911 Arch Street

Philadelphia, Pa.



GARCEAU CHRONOGRAPH

Inkless Recording with Inertialess Marking System

Models available with speed ranges from 1 cm. per hour to 100 cm. per second and with up to 25 traces. Supplied with plain or printed charts.

**ELECTRO-MEDICAL
LABORATORY, INC.**

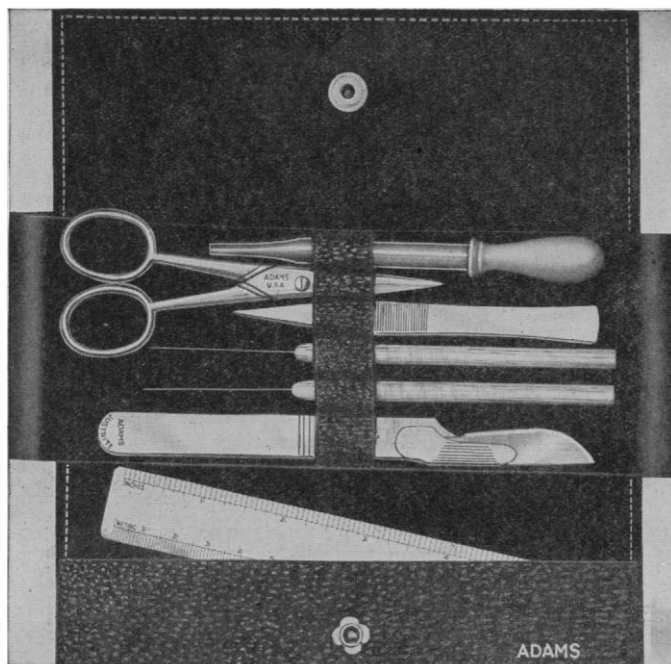
HOLLISTON, MASSACHUSETTS, U. S. A.

Makers of the Electroencephalograph



JUSTRITE Replaceable Blade Scalpel

**LOW PRICED DISSECTING KIT WITH
A REPLACEABLE BLADE SCALPEL**



Featuring a real surgical blade made of highest quality surgical steel. Handle is cadmium plated cold rolled steel. Length including blade is 6".

B-300 Replaceable Blade Scalpel, as illustrated. Also shown in kit.
Each 50c, dozen \$5.00

B-300X Blades for B-300 Scalpel
dozen \$1.00

A-199 Dissecting Kit, complete as illustrated.
Each \$1.40, dozen \$14.40

Write for quantity discounts.

Consult our Catalog No. 102S **LABORATORY INSTRUMENTS AND SUPPLIES** for other kits and Dissecting Instruments. If you don't have a copy, please write for one on your letterhead.

CLAY-ADAMS CO. INC.
44 EAST 23rd STREET, NEW YORK, N. Y.



★ **SEE OUR
CATALOG NO. 48**

For complete listings of dependable Chemistry, Physics, Biology and General Science laboratory equipment and supplies refer to our catalog No. 48. If not on file, write.



Chicago Apparatus Company
Special Laboratory Equipment
1735 NORTH ASHLAND AVENUE • CHICAGO, U. S. A.

HILGER
SPECTROSCOPICALLY STANDARDIZED
SUBSTANCES

H. S. V. P. S. "SPECURE" BRANDS
Regd. Trade Mark Regd. Trade Mark in Gt. Britain

JACO ELECTRODE DRILLER
COMPLETE ASSORTMENT OF STANDARD
PUBLICATIONS ON SPECTROSCOPY

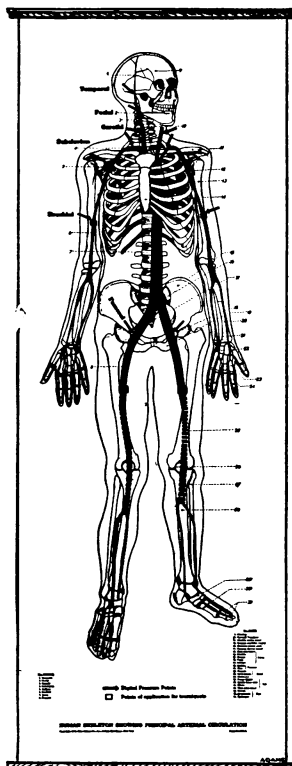
The above are in stock for delivery.

Request Literature—Dept. K.

**JARRELL-ASH COMPANY, 165 Newbury Street
BOSTON, MASSACHUSETTS**

American Representatives for
**ADAM HILGER, LIMITED, LONDON,
ENGLAND**

Attention!! **FIRST AID INSTRUCTORS and STUDENTS**
Here is a new **Civilian Defense First Aid Chart**



Supplied in cardboard mailing tube which serves for easy carrying.

No. 7561 ADAMS FIRST AID PRESSURE POINT, SKELETON, CIRCULATION CHART (18" x 54"). Human skeleton (in black) showing principal arterial circulation (in red) with points for application of digital pressure and tourniquets clearly marked. Key printed on chart gives the names of the main arteries and bones. Mounted on muslin backed paper with wood rollers top and bottom. Available at the low price of \$2.25 each.

This chart has been specially developed for use in Civilian Defense First Aid Courses. It is two-thirds natural size, so that the subject matter is clearly visible, even to large groups of students.

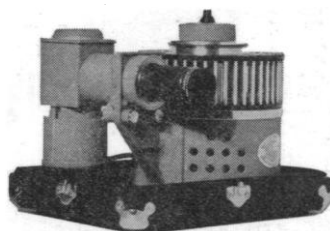
Send your order today while the matter is before you

CLAY-ADAMS CO. INC.
44 EAST 23rd STREET, NEW YORK, N. Y.



Rent a SELECTROSLIDE

For Conventions! Lectures!
Exhibits! Laboratory work!



All models of Selectroslide now available on a rental basis

Selectroslide is the most efficient and accurate projection equipment for 35 mm 2" x 2" slides on the market. All models have automatic and remote control.

"Standard" SELECTROSLIDE for 48 Slides with Projector accommodating bulbs from 300 to 1000 Watt.

"Compact" SELECTROSLIDE for 48 Slides—limited to 200 Watt bulbs.

"Junior" SELECTROSLIDE for 16 Slides—limited to 200 Watt bulbs.

Write for our RENTAL SCHEDULE and let us assist you in selecting the equipment best suited for your needs.

SPINDLER & SAUPPE, INC.

2201 Beverly Boulevard
Los Angeles, Calif.

SPECIAL LaMOTTE PRODUCTS FOR RESEARCH

N (1-naphthyl) Ethylenediamine Dihydrochloride
Sulfamic Acid-Cryst.

Ammonium Sulfamate-Cryst.

Benzidine

pH and Oxidation-Reduction Indicators

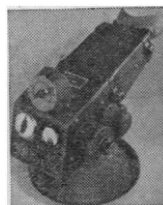
2-6-Dichlorophenol Indophenol

2-6-Dichlorophenol Indophenol Tablets

LaMotte Chemical Products Co.

Dept. "H"

Towson, Baltimore, Md.



A Simple CLINICAL TEST for VITAMIN DEFICIENCY

The value of the Bio-photometer test in diagnosing vitamin deficiencies has been emphasized in the medical literature. The test is simple and provides a plotted curve, which may be compared to normal. As the Bio-photometer measures the speed of the visual cycle, it also provides information regarding the patient's vision and ability to see in dim illumination. Write for full information

BIO-MEDICAL INSTRUMENT CO., Chagrin Falls, Ohio

THE SCIENCE PRESS PRINTING CO.

PRINTERS OF
SCIENTIFIC AND EDUCATIONAL JOURNALS,
MONOGRAPHS AND BOOKS

Correspondence Invited
LANCASTER, PENNSYLVANIA