

NEW SPRING PUBLICATIONS

From the MOSBY Press

Elmer and Rose

PHYSICAL DIAGNOSIS

In the revision of this well-known text emphasis is placed on the art of diagnosis by physical means—the diagnostic application of those signs and symptoms which can be seen, felt, and heard. Both relevant and irrelevant signs are discussed, and each is assigned its proper relative value.

Revised by HARRY WALKER. 8th Ed. 800 pages, 295 illus. Price, \$8.75

Introduction to

VERTEBRATE ZOOLOGY

In this text the classes of the Phylum Vertebrata are introduced from the study of well-chosen and long-tested types. The subject matter is a combination of the classification and anatomy of the vertebrates, varied and enriched by other zoological detail. An extensive bibliography provides an excellent source of reference.

By WILLIAM HENRY ATWOOD. 500 pages, 264 illus. Price, \$3.75

A Textbook of PHYSIOLOGY

The continuous progress in the field of physiology has made a new edition of this textbook necessary. While the size of the book has not been materially increased, new material, illustrations have been added, and there are some changes in points of view.

By WILLIAM D. ZOETHOUT and W. W. TUTTLE. 7th Ed. 700 pages, 302 illus. Price, \$4.50

HISTOLOGIC TECHNIC

This handbook of histological technic will be helpful to the beginner and inexperienced worker who requires specific directions for his problems to obtain the desired results, as well as to the experienced worker who seeks the latest improved methods.

By ARAM A. KRAJIAN. 272 pages, 44 illus. Price, \$3.50

Management of

OBSTETRIC DIFFICULTIES

The new 1940 Edition of this book offers illustrated directions for meeting all obstetric difficulties, and the recommendations as to treatment and technic are practical, specific, and up-to-date.

By PAUL TITUS. 970 pages, 377 illus., 5 color plates. Price, \$10.00

Diagnosis and Treatment of DISEASES of the HAIR

This new book supplies information on hair and scalp conditions which has not been easily available before. The subject is discussed completely, and minute instructions given.

By LEE MCCARTHY. 700 pages, 291 illus., 7 color plates. Price, \$9.50

CANCER in CHILDHOOD

The purpose of this volume is to emphasize childhood cancer as one of the important children's diseases. The material is gathered from actual observation of children by experts.

By HAROLD W. DARCEON. 114 pages, 42 illus. Price, \$3.00

ORDER TODAY

THE C. V. MOSBY COMPANY

3525 Pine Blvd., St. Louis, Mo.

Science 5-10-40

Gentlemen: Send me the following books, charging my account:

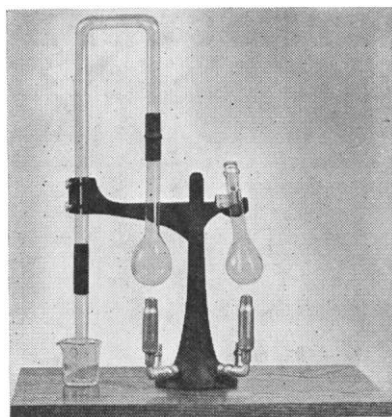
.....

.....

.....

Dr.

Address



For KJELDAHL DETERMINATIONS The HENGAR TABLE

Portable Single Unit Type

Designed for both digestion and distillation in one unit, this portable type is ideal for occasional or individual determinations. The Hengar Table is also furnished in a six-unit type for determinations in multiple. See our advertisement in the Annual issue of *Science*, February 2, 1940, page 16.

Write for Bulletin 14B-6, illustrating apparatus and describing the Technique in detail.

HENGAR COMPANY, 1833 Chestnut Street, Phila., Pa.

LANGUAGES *Get* Made *easy* By LINGUAPHONE *the Facts!*

Scientists, authors, lecturers, travelers and thousands of men and women in all walks of life have mastered a new language *in their own homes* by the world famous LINGUAPHONE METHOD. . . . Amazingly simple, thorough, sound, no smattering. 27 languages available.

Send For FREE Book.

LINGUAPHONE INSTITUTE
39 R.C.A. Building New York City

These inks write on glass and porcelain

GOLD SEAL PERMANENT LABORATORY INKS

You will use them often!

SEND 2 for a box of four 1-oz. bottles, one each of red, white, blue, and black, as illustrated, and we will send it postpaid anywhere in the world. . . . Directions are included.

CLAY-ADAMS CO., 44 EAST 23rd STREET, NEW YORK, N. Y.

The Foundations of Science

By H. POINCARÉ

Pp. xi + 553.

Containing the authorized English translation by George Bruce Halsted of "Science and Hypothesis," "The Value of Science" and "Science and Method," with a special preface by Poincaré, and an introduction by Josiah Royce. *Price, postpaid, \$5.00.*

THE SCIENCE PRESS

Grand Central Terminal

New York, N. Y.

NEW BOOK AND INSTRUMENT CATALOGUES

BAUSCH AND LOMB OPTICAL COMPANY, Rochester. *Photomicrographic Equipment.* Pp. 24. Illustrated.

EASTMAN KODAK COMPANY, Rochester. *Visual Training with Kodasides.* Pp. 28. Illustrated.

MACMILLAN COMPANY, New York. *Spring Announcement of New Books, 1940.* Pp. 170.

NEVILLE COMPANY, Pittsburgh. *Clarite and Clarite "X" Resins.* Pp. 8.

OXFORD UNIVERSITY PRESS, New York. *New Books, March, 1940.* Pp. 24. Illustrated.

SAUNDERS COMPANY, W. B., Philadelphia. *1940 Spring Catalogue.* Pp. 86. Illustrated.

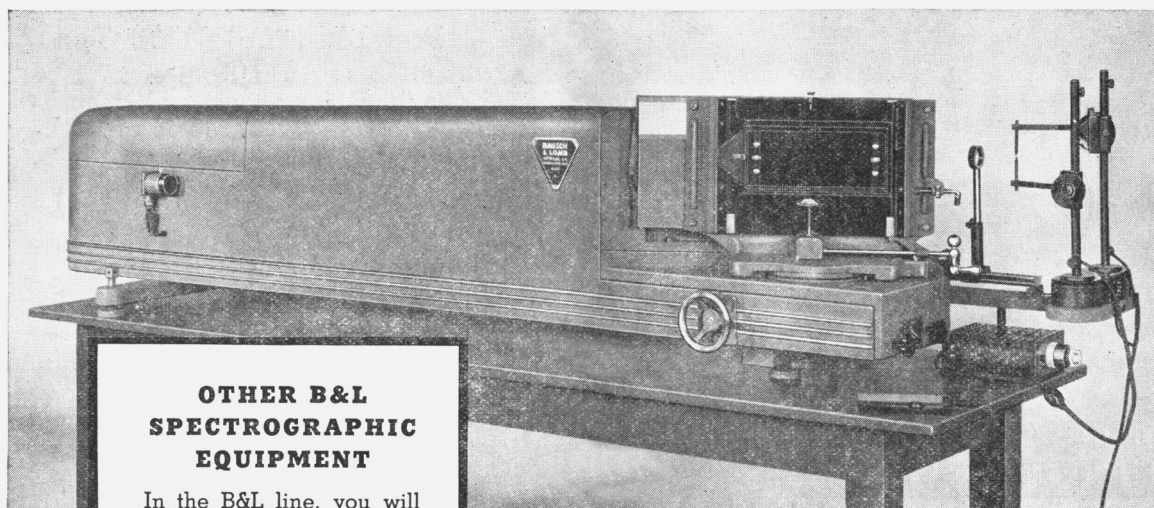
TENNESSEE EASTMAN CORPORATION, Kingsport. *Tenite Molding.* Pp. 40. Illustrated. *Tenite Specifications.* Pp. 27. *Tenite.* Pp. 28. Illustrated.

WESTINGHOUSE ELECTRIC AND MANUFACTURING COMPANY, East Pittsburgh. *Engineering Progress—1939.* Pp. 40. Illustrated.

YALE UNIVERSITY PRESS, New Haven. *New and Recent Books for Spring—1940.* Pp. 28.

Readers are requested to mention SCIENCE when they write for catalogues.

B&L LARGE LITTROW SPECTROGRAPH



OTHER B&L SPECTROGRAPHIC EQUIPMENT

In the B&L line, you will find equipment and accessories for every type of Analytical Spectrography. Here are some of the other instruments: Small Littrow Spectrographs, Medium Quartz Spectrographs. Density Comparators, Illuminating units, spectrum plate viewing boxes, ultra violet spector photometers, absorption cells, spectrum magnifiers, etc.

Equipped **FOR EVERY SPECTRO-ANALYTICAL PROBLEM**

With the Bausch & Lomb Large Littrow Spectrograph, you can do the work that requires resolution of even the most complex spectra, accurately, quickly and conveniently. Ample dispersion to separate lines in crowd-

ed regions simplifies both qualitative and quantitative determinations.

This equipment with a quartz system has a wave length range from 2100 to 8000A and with a glass system from 3550 to 10,000A. It uses either 4" x 10" or 2" x 10" plates. All adjustments necessary in use are made from the operator's position at the plate holder end of the instrument for convenience. This Bausch & Lomb Spectrograph is used in many of America's leading industrial and educational institutions for research and routine work.

Write for booklet No. D-20 describing the entire B&L Line to Bausch & Lomb Optical Co., 642 St. Paul Street, Rochester, N. Y.

**BAUSCH & LOMB
OPTICAL COMPANY**



FOR YOUR EYES, INSIST ON BAUSCH & LOMB EYEWEAR, MADE FROM BAUSCH & LOMB GLASS TO BAUSCH & LOMB HIGH STANDARDS OF PRECISION