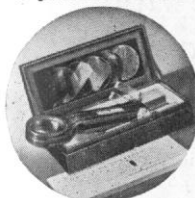


Every Science Department
can afford
THIS POLAROID* KIT

The Polaroid Kit No. 326 offers every science and physics department the most economical means of demonstrating the principles and applications of polarized light. It is so low in price that even the modestly equipped school or college can afford it.

The kit contains a special frame, in which Polaroid discs and specimens are inserted, making a simple polariscope which may be passed around the class.



While extremely simple, the kit provides some of the most colorful and significant demonstrations in the entire field of physics—extinction of light by crossed polarizers, po-

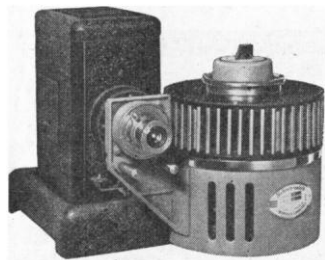
larization of light by reflection, the principle of Polaroid illumination, and many others. Including discs: \$10. Write Div. 1 for free instruction book and catalog.

POLAROID CORPORATION
720 Main Street, Cambridge, Mass.

*U. S. REG.



U. S. PAT. OFF.



Laboratory Selectroslide

Projects Your Film Slides Perfectly
By REMOTE CONTROL

FOR laboratory or lecture room, Selectroslide, automatic slide changer, projects your 35mm natural color or black-and-white film slides up to any size. Change slides automatically by remote control. No assistant is necessary. Error in projection impossible. Your slides projected in clear, sharp detail.

Write for descriptive catalogue

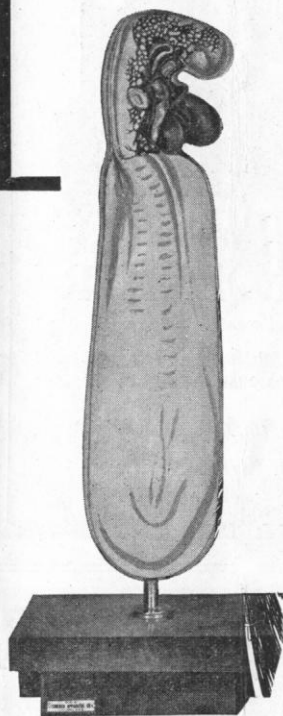
SPINDLER & SAUPPE, INC.
86 Third Street, San Francisco, Calif.

Branch Office: 811 West 7th St., Los Angeles

Patten

CHICK EMBRYO

MODELS



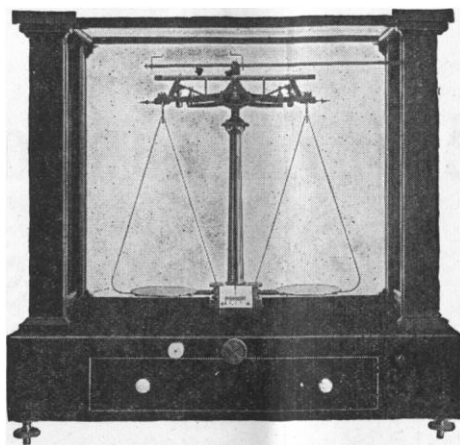
Illustrated: Patten Chick Embryo Model — (44-hour stage) one of the series of seven models which includes the 18, 25, 30, 36, 44, 60 and 96-hour embryos.

★ The Patten Chick Embryo Models are so designed that the embryo as it appears in toto is clearly reproduced and by skillful removals, the underlying tissues and organs are shown without loss. Blood vessels and organ rudiments are exposed in relief and, in many cases, almost in entirety by proper undercut thus assuring clear and accurate conceptions. Sturdiness is obtained in certain minute details by casting them in metal and combining their separate parts with the strong composition of the major portion of the models. In short, no other series of models offer the same completeness and strength of detail. If you are not familiar with this series refer to our catalog No. 47 or write for descriptive booklet.



For complete listings of Chemistry, Physics, Biology and General Science laboratory supplies see our catalog No. 48. If not in your files, write.

Chicago Apparatus Company
Science Laboratory Equipment
1735 NORTH ASHLAND AVENUE • CHICAGO U. S. A.



No. 10 Analytical Balance

HENRY TROEMNER

The Standard of Excellence for 100 years.

Manufacturer of the highest grade Analytical, Assay and Pulp Balances and Weights of Precision.

Catalog 1929S

911 Arch Street
Philadelphia, Pa.

THE ELECTRO-MEDICAL LABORATORY

Incorporated

HOLLISTON, MASSACHUSETTS,
U. S. A.

THE ELECTROENCEPHALOGRAPH

Single and multiple channel units for recording, with cathode ray and ink-writing oscillographs, the electrical activity of the peripheral and central nervous system

Write for Catalog B.

LaMotte pH Test Papers

As an aid in the approximate estimation of the pH of various solutions and substances, we have prepared a series of sensitive test papers from our standardized pH indicators. They are supplied in vials containing 100 strips of the paper and are available within a range of 3.8 pH to 9.6 pH. Price 50 cents per vial for each indicator range—f.o.b. Baltimore, Md.

LaMotte Chemical Products Co.
Dept. "H" Towson, Baltimore, Md.



Special

Junior

Senior

Adams CENTRIFUGES

Which of these three?

'will answer your requirements. Three series of ADAMS Centrifuges, illustrated above by the "ANGLE" model of each series, are available for MICRO, SEMI-MICRO, and larger tubes. . . . Priced from \$17.25 to \$55. CATALOG C110 WILL BE SENT ON REQUEST.

Send for it!

CLAY-ADAMS

CO., INC.

44 EAST 23rd STREET
NEW YORK, N. Y.

CLAY-ADAMS

THE SCIENCE PRESS PRINTING COMPANY

PRINTERS OF

SCIENTIFIC AND EDUCATIONAL
JOURNALS, MONOGRAPHS
AND BOOKS

Correspondence Invited

LANCASTER, PENNSYLVANIA