

SCIENCE

VOL. 85

FRIDAY, APRIL 9, 1937

No. 2206

<i>The Spirit of the Laboratory</i> : PROFESSOR CHARLES R. STOCKARD	343
<i>The American Association for the Advancement of Science</i> : <i>Agricultural Research in China. II</i> : H. K. HAYES	347
<i>Obituary</i> : <i>James Bertram Overton</i> : PROFESSOR CHARLES E. ALLEN	350
<i>Scientific Events</i> : <i>The Standardization Building for the Bureau of Agricultural Economics; Proposed Wildlife Conservation Institute at the University of Wisconsin; Gift to Brown University of a Chemical Research Laboratory; The New Building of Mellon Institute</i>	351
<i>Scientific Notes and News</i>	354
<i>Discussion</i> : <i>Mimicry, as Viewed by Professor Shull</i> : PROFESSOR G. D. HALE CARPENTER. <i>A System for Filing Monographs, Pamphlets and Reprints</i> : PROFESSOR EMMETT B. CARMICHAEL. <i>Stars in the Biographical Directory of American Men of Science</i> : PROFESSOR FRANZ SCHRADER. <i>The Percentage of Iron in Hemoglobin</i> : PROFESSOR BURNHAM S. WALKER and DR. WILLIAM C. BOYD	356
<i>Reports</i> : <i>Research in the Fields of Geology, Chemistry and Physics</i>	361
<i>Special Articles</i> : <i>Magnetic Anomalies near Wilmington, N. C.</i> : DR. GERALD R. MACCARTHY and H. W. STRALEY, III. <i>Effect of Certain Enzymes and Amino-Acids on Crown Gall Tissues</i> : DR. P. A. ARK. <i>Sex Differences in Anemic Rats</i> : DR. H. H. MITCHELL and T. S. HAMILTON. <i>Crystalline Catalase</i> : PROFESSOR JAMES B. SUMNER and ALEXANDER L. DOUNCE	362
<i>Scientific Apparatus and Laboratory Methods</i> : <i>The Use of Synthetic Resins in the Preparation of Permanent Bacterial Mounts</i> : B. F. SKILE and DR. C. E. GEORGI. <i>A Practical Device for the Rapid Quantitative Determination of Plant Pigments</i> : WILLIAM A. BECK	367
<i>Science News</i>	8

SCIENCE: A Weekly Journal devoted to the Advancement of Science, edited by J. McKEEN CATTELL and published every Friday by

THE SCIENCE PRESS

New York City: Grand Central Terminal
Lancaster, Pa. Garrison, N. Y.
Annual Subscription, \$6.00 Single Copies, 15 Cts.

SCIENCE is the official organ of the American Association for the Advancement of Science. Information regarding membership in the Association may be secured from the office of the permanent secretary, in the Smithsonian Institution Building, Washington, D. C.

THE SPIRIT OF THE LABORATORY¹

By Professor CHARLES R. STOCKARD

CORNELL UNIVERSITY MEDICAL COLLEGE, NEW YORK, N. Y.

WHY do we build a laboratory for physiological research? Because there have lived men like Theobald Smith. The discoveries and scientific advances made by such men have continually necessitated the building of new laboratories with more and more refined facilities in which other investigators might work to further widen the horizons of knowledge. Naming this the Theobald Smith Laboratory is dedicating it to one of the persons who greatly aided in its building. The Albany Medical College is to be congratulated on the realization of this fact, as well as on its peculiar right to adorn the building with such a name! Theobald Smith was a native son of this city, and the most distinguished graduate of the Albany Medical College. And it should be added, he

¹ Address given at the dedication of the Theobald Smith Memorial Laboratory at Albany Medical College on March 19, 1937.

probably was the most eminent contributor to medical science that this country has produced.

We may venture the fanciful conjecture that the earliest laboratory for physiological research was the Garden of Eden. Wherever this was, the story suggests that Adam tried out the effects of different plants as food for the human body and mind. These early instinctive experiments are still being performed by almost all members of the animal kingdom. But of all the animals, only Adam, with the valuable assistance of Eve, finally discovered the tree of knowledge and ate of its fruit. This food nourished the mind of Adam to develop beyond that of other animals, and he was driven out of the Garden and became capable of earning his bread by the sweat of his brow. The descendants of Adam ever since have been searching for this lost tree of knowledge, and though they have failed to find it they have learned much from the



WHATMAN

Filter Paper

*No. 5, the old reliable
for fine precipitates*

For the qualitative removal of fine precipitates, WHATMAN Filter Paper No. 5 is the choice of Chemists in Lead and Zinc Mines, Smelters and Refineries; in Chemical Plants, Dye Works, etc. No. 5 is designated by the A.O.A.C. for separating citrate soluble and insoluble phosphoric acid.

While not washed in Acid and not recommended for accurate gravimetric analyses, No. 5 is frequently used for Smelter Sulfur determinations and similar analyses.

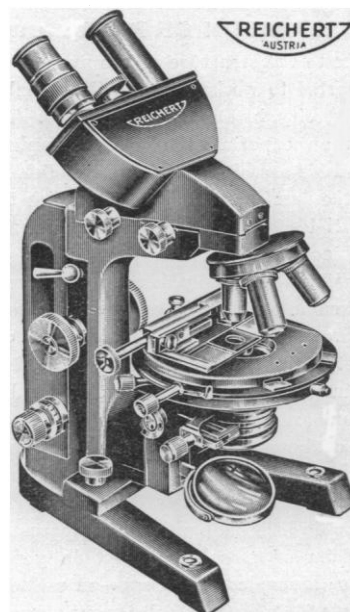
No. 5 is especially valuable for use in Buchner Funnels, since it is strong enough to resist high vacuum and retentive to fine precipitates.

No. 5 may be just the answer to your troublesome filtration—why not try it.

Samples cheerfully supplied.

H. REEVE ANGEL & CO., INC.
7-11 SPRUCE ST., NEW YORK, N. Y.

WHATMAN
High Grade
FILTER PAPERS



REICHERT UNIVERSAL MICROSCOPE "Z"

A new research stand for examination of large objects under transmitted and reflected light.

STAGE and substage may be removed for the examination of large objects, or replacement by other stages. The revolver for transmitted light objectives may be replaced with a universal opaque illuminator for bright and dark field, or by Greenough or photo objectives for photomicrography. The stand may be furnished with inclined binocular or monocular tubes for direct observation, vertical monocular tube for photomicrography, petrographic tube, or Greenough binocular tube for stereoscopic vision. A holder for a camera with extension bellows may also be attached. Threaded lugs are provided for securing a small optical bench, where illuminating apparatus, filters, etc., may be placed. Coarse and fine adjustments are arranged low, so that the operator's hands remain on table.

Particulars on request

Pfaltz & Bauer, Inc.
EMPIRE STATE BUILDING, NEW YORK

SHARP!..

and stays sharp under hard use

EMPIRE-HUETTNER Micro-Knife

Now in use in over 300 laboratories, the Empire-Huettner Microtome Knife is made especially for microtomy. It is 40 mm. long and 5 mm. at the base. Even a novice can learn to strop this knife!



Empire-Huettner Micro-Knife in Holder

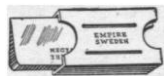
The holder assures the maximum safety to the edge of the knife, protecting it even if dropped. Further, it protects the operators against possible cuts.



Empire-Huettner Micro-Knife in Sheath

Each blade is supplied with a metal sheath. This further protects the blade, whether in the holder or separate.

The entire outfit may be safely carried in a coat pocket.



Blade Shown with Metal Case

The low cost and the obvious advantages of the Empire-Huettner Micro-Knife make it desirable that you have at least one complete outfit in your laboratory now!

IMPORTANT

We resharpen blades for the Empire-Huettner Micro-Knife

25¢ each . . . 24 hour service

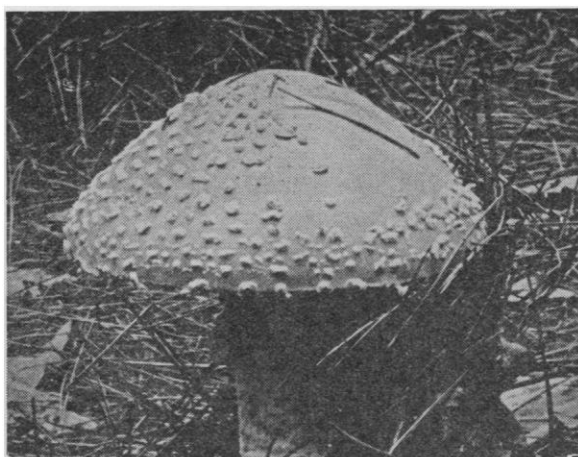
Empire-Huettner Microtome Knife Complete (holder, two blades, strop, automatic stropping manipulator, \$10.75 and back for stone sharpening)

For complete details address

EMPIRE

Laboratory Supply Co., Inc.

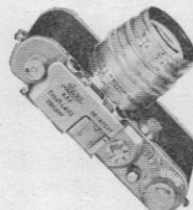
507-559 West 132nd Street, New York



LEICA PHOTOGRAPH BY WM. M. HARLOW

SPECIMENS

of any sort, whether in the field or in the laboratory, are best photographed with the LEICA camera. The LEICA, with its host of accessories, is truly the scientist's camera, for it is precise and accurate. This is attested to by the fact that it is made by E. Leitz, Inc., which means that over 85 years' experience in making the world's finest microscopes is embodied in every LEICA. Learn more about this amazing camera and how it can help you in your work.



Write today for information and a free copy of Booklet 1206—"Leica in Science".

E. LEITZ, INC. DEPARTMENT G.
730 FIFTH AVE. NEW YORK