

SCIENCE

VOL. LXX

FRIDAY, AUGUST 30, 1929

No. 1809

<i>The Thirteenth International Physiological Congress:</i>	
<i>Address of Welcome:</i> PROFESSOR WILLIAM H. HOWELL	199
<i>The Progress of Physiology:</i> PROFESSOR AUGUST KROGH	200
<i>Reminiscences of the Early Days of the Physiological Congresses:</i> PROFESSOR LÉON FREDERICQ	205
<i>Obituary:</i>	
<i>Recent Deaths</i>	207
<i>Scientific Events:</i>	
<i>The Botanic Garden of the University of Cambridge; Demonstrations of Biological Work at Woods Hole; International Lighthouse Conference; The Mathematics of Engineering</i>	208
<i>Scientific Notes and News</i>	211
<i>University and Educational Notes</i>	214
<i>Discussion:</i>	
<i>Shaler on the Fossil Brachiopods of the Ohio Valley:</i> DR. ROBERT TRACY JACKSON. <i>Ions and Electrical Currents in the Upper Atmosphere:</i> DR. E. O. HULBURT. <i>Muybridge Animal Pictures:</i> PROFESSOR WALTER R. MILES. <i>A Unified System of Presenting Bibliographies:</i> DR. J. L. ST. JOHN. <i>A New Blue Crayfish:</i> CURTIS L. NEWCOMBE	214
<i>Quotations:</i>	
<i>Electrical Research</i>	218

<i>Scientific Books:</i>	
<i>Weaver and Clements on Plant Ecology:</i> PROFESSOR FRANCIS RAMALEY. <i>Naumann's Grundlagen der experimentellen Planktonforschung:</i> PROFESSOR C. JUDAY	218
<i>Scientific Apparatus and Laboratory Methods:</i>	
<i>A Simple Method for Finding Any Particular Object in a Microscope Slide Preparation:</i> DR. EDWARD C. ROSENOW	219
<i>Special Articles:</i>	
<i>Studies of Mean Sealevel:</i> PROFESSOR DOUGLAS W. JOHNSON. <i>Segregations Observed in Breeding the Monilia Bread Molds:</i> DR. B. O. DODGE	220
<i>Science News</i>	x

SCIENCE: A Weekly Journal devoted to the Advancement of Science, edited by J. McKEEN CATTELL and published every Friday by

THE SCIENCE PRESS

New York City: Grand Central Terminal

Lancaster, Pa.

Garrison, N. Y.

Annual Subscription, \$6.00

Single Copies, 15 Cts.

SCIENCE is the official organ of the American Association for the Advancement of Science. Information regarding membership in the Association may be secured from the office of the permanent secretary, in the Smithsonian Institution Building, Washington, D. C.

ADDRESS OF WELCOME OF THE PRESIDENT OF THE THIRTEENTH INTERNATIONAL PHYSIOLOGICAL CONGRESS¹

By Professor WILLIAM H. HOWELL

THE JOHNS HOPKINS UNIVERSITY

MAY I express to you first the gratification and pride that we physiologists of the United States feel in welcoming the Thirteenth International Physiological Congress to our own country. It was only about fifty years ago, barely the space of a single lifetime, that physiology in this country began its career as an independent science with special facilities for instruction and research and for the training of its own group of workers.

Before that period individuals here and there had made notable contributions to the subject. Beaumont, Dalton, Flint, Weir Mitchell and Wood are names especially to be remembered. But the real birth of physiology with us began with the establishment of the laboratories of Bowditch at Boston, of Newell

¹ Harvard University, August 19, 1929.

Martin at Baltimore and of Chittenden at New Haven. Into these laboratories were transplanted from Europe the spirit and methods of modern physiological research. Their directors were pupils of Ludwig and Bernard, Michael Foster and Kühne, and they grafted upon our medical courses the conception and practice of physiology as an experimental science along the lines laid down by the great masters of our modern era, Claude Bernard and Johannes Müller.

From these modest beginnings have sprung the splendid laboratories in experimental physiology and medicine which we now possess. Our workers are numbered by the hundreds and our contributions to the advancement of the subject increase constantly in importance. We look upon this meeting of the congress at Boston as a recognition that American physi-

Just Published

General College Chemistry

By **Joseph A. Babor** (*College of the City of New York*)

600 pages. With 167 figures, color plate and chart. 8vo, \$3.75

THIS new text offers a decided departure from other existing books. In the first place, it is the only one thus far published which builds its text closely upon the atomic structures. Only teachers who have tried to follow a general text which only lightly touches this phase of the subject can appreciate the boon this will be to teaching. A fellow professor of chemistry, to whom the manuscript was shown, gave this unequivocal opinion: "I consider Professor Babor's 'College Chemistry' as easily the best I have read. Its outstanding merits are its thoroughly modern point of view; its emphasis on principles rather than on descriptive details; and its presentation and consistent use of atomic structure."

Laboratory Manual in General College Chemistry

By **Joseph A. Babor and Alexander Lehrman** (*College of the City of New York*)

388 pages. With 34 figures. 8vo, \$2.00

The Science of Psychology

An Introductory Study

By **Raymond H. Wheeler** (*University of Kansas*)

572 pages. 68 illustrations. \$3.75

THIS text is one of the most modern and forward reaching of any yet published on the subject of general psychology. An outstanding feature is the fact that this is the first text-book on general psychology to be written from the configurational and organismic standpoints. The organismic standpoint has practically become established in sociology and neurology. Also, the standpoint from which the book is written makes it possible to bring the facts of psychology into closer relation to the facts of other sciences than has been done in previous texts. This is the first detailed account of human behavior to be given in terms of the law of least action and its corollaries. In brief, this represents an entirely new organization of the subject matter of psychology.

THOMAS Y. CROWELL COMPANY

393 Fourth Avenue

New York

Journal of the Optical Society of America and Review of Scientific Instruments

Published monthly by the *Optical Society of America* in co-operation with the *Association of Scientific Apparatus Makers of America*

CONTENTS FOR JULY, 1929

Spectral Reflectances of Common Materials in the Ultraviolet Region.

A Method of Obtaining the Optical Constants of Metallically Reflecting Substances in the Infrared.

Instrument Section

Experimental and Theoretical Mid-series Characteristic Impedance of Acoustic Wave Filters.

The Design of Drawing Curves.

The Production of Emission from Oxide Coated Filaments: A Process Phenomenon.

On the Efficient Utilization of Solar Energy.

Magnetic Testing Furnace for Toroidal Cores.

An Improved Constant Current Regulator.

A Large Reciprocating C. T. R. Wilson Cloud Expansion Apparatus.

A Mercury Arc with Thin Glass Window.

Subscription \$5.00 per year

Address orders to

F. K. RICHTMYER, Manager

Rockefeller Hall
Ithaca, N. Y.

The Wistar Institute Bibliographical Service

is of invaluable assistance to

Librarians—Investigators—Teachers

It brings to them, in AUTHORS' ABSTRACT form, a brief review of all original papers on Biological Subjects which appear in the following journals:

Journal of Morphology and Physiology
The Journal of Comparative Neurology
The American Journal of Anatomy
The Anatomical Record
The Journal of Experimental Zoology
American Journal of Physical Anthropology
The American Anatomical Memoirs
Folia Anatomica Japonica (Tokio, Japan)
Stain Technology (Geneva, N. Y.)
Physiological Zoology (Chicago, Ill.)

Advance Abstract Sheets

issued semi-monthly, bearing Authors' Abstracts without bibliographic references, offer a practical means of making research immediately available in abstract form and of purchasing articles of special interest in reprint form without the necessity of subscribing to all the journals. Subscription, \$3.00 per year.

Bibliographic Service Cards

with complete bibliographic references, printed on Standard Library-catalogue cards, are of value and assistance to Librarians and Investigators. Subscription, \$5.00 per year.

Abstracts in Book Form

referred to above, are brought together periodically, with Authors' and Analytical Subject Indices. Price \$5.00 per volume.

*Subscriptions to the Bibliographic Service
and orders for reprints should be sent to*

The Wistar Institute of Anatomy and Biology

Thirty-sixth St. and Woodland Ave.

Philadelphia, Pa.

Flowers and Insects

By

CHARLES ROBERTSON

A technical book covering many years of study by the author on the visits of insects to flowers. 15,172 visits of 1,288 insects, and one humming bird, to 441 insect flowers are recorded.

This book should prove of interest both to the Botanist and to the Entomologist.

225 pages, \$3.00 plus postage

This book is printed and offered for sale by

THE SCIENCE PRESS PRINTING
COMPANY

Lime and Green Streets, Lancaster, Penna.

BIOLOGICAL SUPPLIES

Zoological

Embryological

Botanical

Materials

Drosophila

Cultures



Groups

Slides

Life

Histories

Philippine

Land Shells

A Good Book on Seashore Ecology. Verrill's
Vineyard Sound Report. \$3.00.

Catalogs will be sent on request

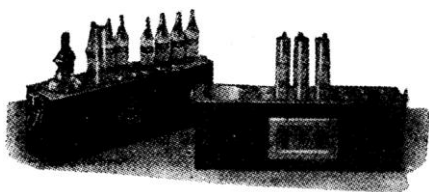
Address all correspondence to

Geo. M. Gray, Curator
Supply Department

Marine Biological Laboratory

Woods Hole, Mass., U. S. A.

Simple, Rapid pH Control

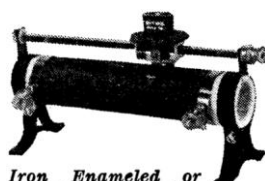


The simplicity and convenience of this portable outfit make it ideally suited for pH determinations in practically all types of work. Each block is complete with a set of permanent color standards, a bottle of indicator solution with pipette and nipple and four test tubes. Each set covers the range of one indicator, and no other equipment is needed for making determinations in this range.

Price \$12.50 f.o.b. Baltimore

LaMotte Chemical Products Co.
418 Light St., Baltimore, Md., U. S. A.

LaMotte Block Comparator



Iron Enamelled or
Solid Wall Porcelain
Tube

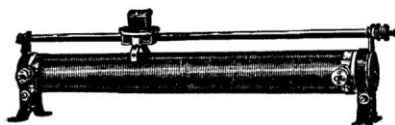
The various types are made in several lengths of 8", 16", and 20", respectively, with resistance values of from 0.25 ohm and 25 amperes, to 30,000 ohms and current capacity of 0.1 ampere.

"BECBRO" Stone Rheostats are made in the following types: Single, Double, Universal, and Crossed Sections. These rheostats, with the porcelain tubular types, find their many uses in high frequency and radio work.

Our Catalogue S-20 Sent You Upon Request

BECK BROTHERS, Makers

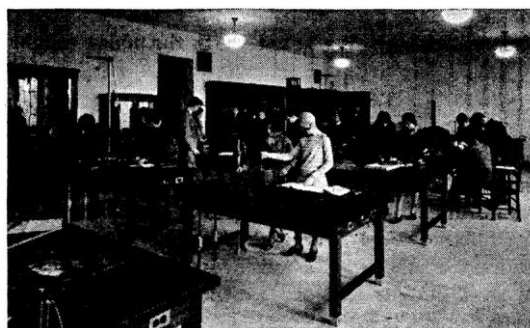
421 Sedgley Avenue
Philadelphia, Pa.



JAGABI RHEOSTATS—

wound on porcelain tubes instead of porcelain enameled iron tubes, have high insulation and low inductance. They meet an ever increasing demand by Educational, Research and Industrial Laboratories for better and more rugged Jagabi Rheostats. Write for new Catalog 1230-S listing 57 standardized ratings, which are carried in stock.

JAMES G. BIDDLE, 1211-13 ARCH ST., PHILADELPHIA



Physics Dept., Butler University, Indianapolis, Ind.

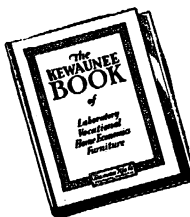
Use Our Engineering Department—This Service Is Free

To enable schools to have laboratories of greatest utility and convenience at lowest possible cost, we offer the service of our Engineering Department to owners, builders or architects free of charge. Our Engineering Department has had 23 years' experience in designing Laboratory Furniture and laying out Laboratory floor plans. They are acquainted with many money-saving steps that make their service very desirable.

Send us rough floor plans or blueprints, or, on request, our Engineering Department will prepare blueprint floor plans for any building or buildings you desire to equip with Laboratory Furniture. Their blueprints will show the location of each piece of equipment with floor connections, locating pipe for drainage and the supply of hot and cold water, gas, vacuum, compressed air, steam, distilled water, electricity, etc.

Write for Free Kewaunee Book

In our New Kewaunee Book we have illustrated our line of Kewaunee Laboratory Furniture. It is the most complete book of the industry and should be in the hands of every one interested in planning for or the purchase of Laboratory Equipment. In the Kewaunee Book we have included exterior views of laboratory buildings for all purposes and interior views of installed laboratories of almost every kind. Floor plans of some recent installations are shown, letters from schools equipped with Kewaunee Furniture are reproduced and full details of Kewaunee Construction methods are illustrated and explained. We will send a copy of this new cloth bound book of 458 pages without charge and pre-paid to any instructor or official interested in the planning for or in the purchase of Laboratory Furniture, who replies, giving his position and using the stationery of the institution. Address all inquiries to our factory at Kewaunee.



Kewaunee Mfg. Co.
LABORATORY FURNITURE EXPERTS

C. G. Campbell, Pres. & Gen. Mgr.

115 Lincoln St., Kewaunee, Wis.

Chicago Office: 14 E. Jackson Blvd.
New York Office: 70 Fifth Avenue
Offices in Principal Cities