

SCIENCE

VOL. LXVIII

AUGUST 24, 1928

No. 1756

CONTENTS

<i>The Art and Science of Medicine</i> : DR. HOMER F. SWIFT	167
<i>Quantitative vs. Qualitative Studies in Geology</i> : DR. GEO. D. HUBBARD	171
<i>Gentle Southwest Winds</i> : PROFESSOR EDWIN B. WILSON	174
<i>Scientific Events</i> :	
<i>A Chinese National Research Institute; The British Empire Vegetation Committee; Federal Aid to Agriculture; Research in Aviation; An Akeley Memorial in the Belgian Congo</i>	176
<i>Scientific Notes and News</i>	178
<i>University and Educational Notes</i>	182
<i>Discussion</i> :	
<i>Heloderma suspectum, Automobile Tourists and Animal Distribution</i> : DR. CHARLES T. VORHIES.	
<i>The Hall Effect in Single Metal Crystals</i> : PROFESSOR P. I. WOLD.	
<i>A Note on Reputed Ancient Artifacts from Frederick, Okla.</i> : LESLIE SPIER.	
<i>An Explanation</i> : DR. WILLIAM CHARLES WHITE.	
<i>A Magnetic Storm</i> : GEORGE HARTNELL	182
<i>Scientific Apparatus and Laboratory Methods</i> :	
<i>A Rapid Method for Determining Colorimetrically the Ph of Small Amounts of Solutions</i> : OSCAR W. RICHARDS.	
<i>Automatic, Electrically Controlled Temperature and Humidity Frames for Plant Propagation</i> : G. WEIDMAN GROFF	185
<i>Special Articles</i> :	
<i>Mutations in Barley induced by X-rays and Radium</i> : L. J. STADLER.	
<i>The Nuclear Conditions in the Spermatocytes of Drosophila melanogaster</i> : PROFESSOR E. C. JEFFREY	186
<i>Science News</i>	x

SCIENCE: A Weekly Journal devoted to the Advancement of Science, edited by J. McKeen Cattell and published every Friday by

THE SCIENCE PRESS

New York City: Grand Central Terminal.
Lancaster, Pa. Garrison, N. Y.
Annual Subscription, \$6.00. Single Copies, 15 Cts.

SCIENCE is the official organ of the American Association for the Advancement of Science. Information regarding membership in the Association may be secured from the office of the permanent secretary, in the Smithsonian Institution Building, Washington, D. C.

THE ART AND SCIENCE OF MEDICINE¹

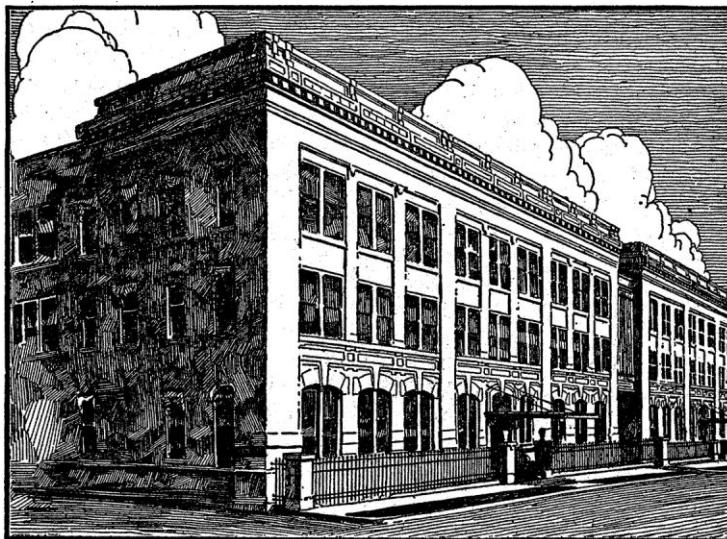
THIS twentieth anniversary meeting of the American Society for Clinical Investigation marks the active inauguration of a policy which has for its purpose the perpetuation of the youthfulness of the organization. The members who to-day retire to the emeritus list are those who formed the society and on whose shoulders for many years fell the burden of directing its course. During this score of years in this country has occurred practically the entire growth of medical clinics as we understand them to-day. The physical organization and intellectual direction of most of these clinics has fallen to the lot of our early members. As a result of this pioneer work the younger members of this society have at their disposal facilities for following careers as clinical investigators scarcely equalled anywhere in the world.

But points of view are probably more important than mere places for work. It is sometimes well to stop and survey our territory, our methods and our attitude. An anniversary event, such as we are to-day celebrating, offers an opportunity for such a survey.

Not unfamiliar to you are the terms "science of medicine" and "art of medicine." Usually they are expressed in a manner which implies the existence of two mutually exclusive fields or manners of endeavor. It is true that custom gives meaning to words or phrases; but this is no excuse for allowing these phrases to fix unalterably our attitude towards the subjects which they symbolize.

In the expression "art and science of medicine" at least three separate ideas are included: medicine, art and science; hence it becomes desirable to attempt to define these terms. Medicine is that department of biology which considers disease in all its aspects. This assumes that disease is a departure from normal living, *i.e.*, from physiological processes. Correctly speaking, it would exclude from study the manifestations of aging, for these in a strict sense must be considered as physiological, *i.e.*, normal to life. But such definitions must be generally inclusive rather than specifically exclusive. In a field as broad as medicine we can define the aims, but the boundaries and ramifications must not be limited.

¹ Presidential address before the American Society for Clinical Investigation, Washington, D. C., April 30, 1928. From the hospital of the Rockefeller Institute for Medical Research, New York City.



THE LILLY RESEARCH LABORATORIES

Research in Manufacturing Pharmaceuticals and Biologicals

Every step in the manufacture of pharmaceutical and biological products calls for scientific supervision.

Crude vegetable drugs must pass botanical inspection; chemical tests and assays are also needed to make certain that materials used in manufacturing are of the proper identity and quality.

Research work is carried on all the year in the laboratories at Indianapolis and Greenfield, Indiana. During the summer a branch is maintained in the Marine Biological Laboratories, Woods Hole, Massachusetts, for investigations involving marine forms.

The Lilly Research Laboratories are equipped for work in synthetic chemistry, physiological chemistry, physiology, pharmacology, bacteriology and immunology. On account of experience in industrial chemical research, we are especially prepared to undertake the problems of turning purely scientific discoveries to practical use. Our research staff coöperates with investigators in universities and clinics.

Chemical and physiological assays are necessary to standardize finished products. The manufacture of antitoxins, vaccines and biologicals used in medical practice require the knowledge and skill of those trained in chemical, physiological and bacteriological sciences.

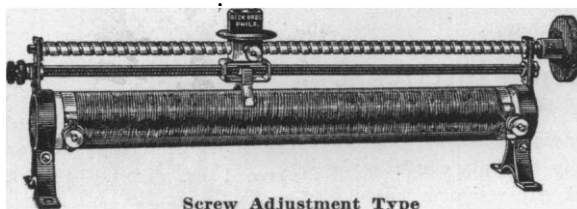
In addition to maintaining a staff for scientific supervision of manufacturing processes, years ago we saw the necessity of organizing a research department for the improvement of established preparations and the development of new medical products. The building pictured above is devoted entirely to scientific work.

ELI LILLY AND COMPANY

INDIANAPOLIS, INDIANA, U. S. A.

BECBRO

LABORATORY RHEOSTATS



Screw Adjustment Type

"BECBRO" Rheostats carried in stock include numerous different ratings. Included in the stock sizes are tubular types of lengths 20"; 16"; 8"; the resistance element being Wire or Ribbon.

Each tube has a slider adjustment which varies the resistance by very small steps from Zero to total value of the unit.

The approximate total resistance of these stock rheostats varies from 0.3 ohm to 30,000 ohms per unit, and have corresponding current capacities of 25 amperes down to 0.1 ampere.

Rheostats of more or less special construction include the Single Tube equipped with two rods and two sliders; Single and Double Tube equipped with Screw Adjustment (see cut); Double and Triple Tubes mounted as a Unit; Non-Inductive Wound Tubular and Stone Types.

"BECBRO" Carbon Compression Rheostats with corresponding Normal Ratings of 250: 1000: 1500: 3000 Watts.

Write for Catalog S-20

BECK BROS.

421 Sedgley Ave.

Philadelphia, Pa.

LIVING BULLFROGS

Safe delivery guaranteed

Teach Biology with live specimens where practicable

We have the only complete live materials establishment in America. Live plants and animals representing all types are kept on hand under semi-natural conditions at all seasons.

Also headquarters for preserved specimens of all types, microscopic slides, life histories, demonstrations, osteological preparations, insect collections. We specialize in many important southern species not obtainable elsewhere.

All material guaranteed without reservations.

SOUTHERN BIOLOGICAL SUPPLY CO., INC.,
Natural History Building, New Orleans, La.

THE SCIENCE PRESS PRINTING COMPANY

PRINTERS OF

SCIENTIFIC AND EDUCATIONAL JOURNALS,
MONOGRAPHS AND BOOKS

Correspondence Invited

LANCASTER, PENNSYLVANIA

Col. Whelen says "he will invariably choose the 7 power Mirakel when compared with standard 6 and 8 power glasses

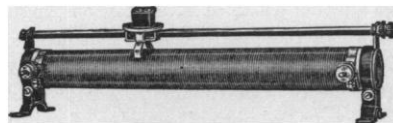
Buy Good Binoculars



The new 7-Power Mirakel weighs only 6 oz. Can be carried in vest pocket or ladies' bag. A wonderful high-grade **\$35**
Prism Binocular for every use
Hensoldt New "Dialyt"—8x30—13 oz. **\$58**
Zeiss Wide-Angle "Deltrentis"—8x30. **\$66**
Prismiris Pocket Binocular, 6 Power, 12 oz. prism **\$16**
Compass—Engineer's and Sportsman's; Floating Dial. **\$3.50**
Fiala Sleeping Bag—Scientifically Correct—Warm Light Weight—Sanitary. Best for Outdoor Sleeping **\$25**
Fiala "Llama" Wool Bag: 3½ lbs. **\$30**
Canoe Spensons: portable; adjustable; wt. 1 lb. each. pair **\$10**

Scientific, Exploring, Camping Outfits—Write for Catalog A

ANTHONY FIALA, 25 Warren St., New York



By means of sliding-contacts the resistance value of

JAGABI RHEOSTATS

can be varied from zero to full rating in exceedingly small steps.

They are eminently suited for, and are largely used in Educational, Research and Industrial Laboratories.

Write for illustrated Bulletin 1140-S

JAMES G. BIDDLE, PHILADELPHIA
1211-13 ARCH STREET



What the little "S" in the Weston Catalogue means to You

PRACTICALLY, it means the largest and most diversified line of models and ranges offered by any instrument manufacturer anywhere in the world.

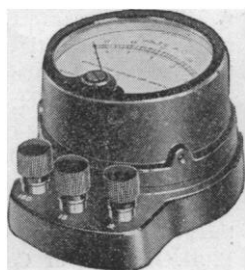
A stock of instruments that has been carefully and scientifically developed over a long period of time based on the actual buying habits of the electrical industry—*that's selection.*

Speedy delivery. So important when you want immediate shipment of an instrument to meet a special requirement. In nine cases out of ten we have the exact model and range ready to ship direct from stock—*that's service.*

Made to standard specifications. Thorough Weston craftsmanship embodied in all designs and constructional features. These instruments are built on our own time—for your special convenience—*that's satisfaction.*

All told, it means savings. Standardized stock instruments not only mean a saving in time for you, but are usually less expensive than instruments of special specifications and ranges. Consult the Weston Catalogue and you will invariably find marked with a little "S" an instrument that will exactly suit your requirements.

WESTON ELECTRICAL
INSTRUMENT CORPORATION,
585 Frelinghuysen Ave.,
Newark, New Jersey



Model 528 A. C. Portables



EXECUTIVE BIOLOGIST, Ph.D., ZOOLOGIST—18 years' various zoological research experience, 16 years' teaching, knowledge of cytology and protozoology, desires to improve position. Address "G. F.," care of The Science Press, 3939 Grand Central Terminal, New York, N. Y.

Ph.D., ZOOLOGIST—Desires position in **MEDICAL SCHOOL** to teach microscopic anatomy and to study gross anatomy, eventually to teach in either branch. Graduate of three American Universities; studied abroad, one year. Well grounded in vertebrate zoology and cellular biology. Address "This Fall," care of The Science Press, 3939 Grand Central Terminal, New York, N. Y.

THE MICROSCOPE

By **SIMON H. GAGE**, of Cornell University

Revised, Dark-field Edition (1927) now Available. The Old and the New in Microscopy, with a special chapter on Dark-Field Methods and their Application.

Postpaid, \$3.50

COMSTOCK PUBLISHING CO., ITHACA, N. Y.

Second Edition: Revised and Enlarged

THE RAT: DATA AND REFERENCE TABLES

Memoir No. 6: 548 Pages. Bibliography: 2206 Titles

HENRY H. DONALDSON

Published by THE WISTAR INSTITUTE

Philadelphia, Pa., U. S. A.

Price, \$5.00

Marine Biological Laboratory Woods Hole, Mass.

SUPPLY DEPARTMENT

Biological Supplies

Open the Entire
Year

For the classroom, museum or collector.

Look for the sign of the Limulus. As the Limulus represents the test of time, we feel from the business growth that our supplies have also stood the test of years.

Send for Catalogue

No. I. Zoological and Embryological material. Life Histories and Habitat Groups.
No. II. Botanical material.
No. III. Microscopic Slides.

Address all correspondence regarding material and catalogue to:
Supply Department

GEO. M. GRAY, Curator,
Woods Hole, Mass.



Hy-Speed Mixers

Clamp to any tank, operate from light circuit, mix all kinds of liquids. Also used for even temperature baths. Thousands in use.

Write for circular.

ALSO ENGINEERING CO.
47 W. 63rd St., New York

All Sizes
from
1/10 H. P.
\$37.50 up